



# FLOOR PLAN



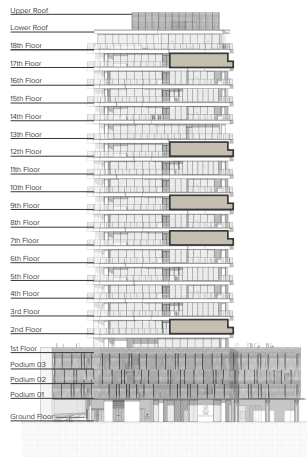
**EXCLUSIVELINKS**  
Real Estate Brokers



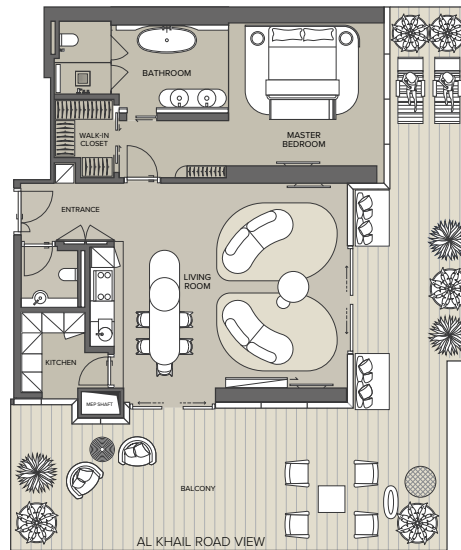
**THE RITZ-CARLTON RESIDENCES**  
DUBAI, BUSINESS BAY

## ONE-BEDROOM APARTMENT

South East Elevation



DUBAI WATER CANAL VIEW



**THE RITZ-CARLTON RESIDENCES**

DUBAI, BUSINESS BAY

Apartment Type: **T1A**

Unit Number: **202, 701, 901, 1201 & 1701**

Internal Area: **from 1,246 ft<sup>2</sup> (115.73 m<sup>2</sup>) to 1,286 ft<sup>2</sup> (119.51 m<sup>2</sup>)**

External Area: **from 922 ft<sup>2</sup> (85.61 m<sup>2</sup>) to 977 ft<sup>2</sup> (90.81 m<sup>2</sup>)**

Total Area: **from 2,194.64 ft<sup>2</sup> (203.88 m<sup>2</sup>) to 2,238 ft<sup>2</sup> (207.915 m<sup>2</sup>)**

View: **Dubai Water Canal and Al Khail Road**

Bedrooms: **1**

Internal Area    Terrace Area

Any Concept Renderings as shown for the residences are representative only, and the Developer reserves the right to make changes or substitutions of equal or better quality for any features, materials and equipment which are included with the unit.



# FLOOR PLAN



THE RITZ-CARLTON  
RESIDENCES  
DUBAI, BUSINESS BAY

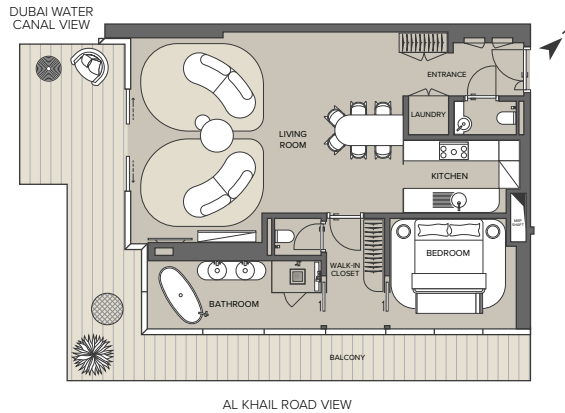
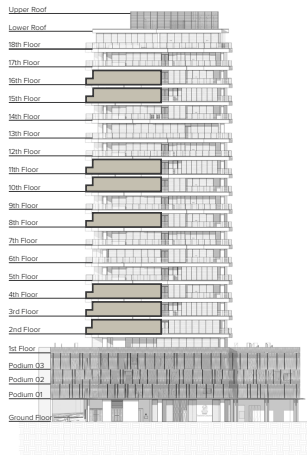
## ONE-BEDROOM APARTMENT



THE RITZ-CARLTON  
RESIDENCES

DUBAI, BUSINESS BAY

South East Elevation



Internal Area    Terrace Area

Apartment Type: **T1B**

Unit Number: **201, 301, 401, 801, 1001, 1101, 1501 & 1601**

Internal Area: **from 1,102 ft<sup>2</sup> (102.36 m<sup>2</sup>) to 1,112 ft<sup>2</sup> (103.30 m<sup>2</sup>)**

External Area: **from 328 ft<sup>2</sup> (30.48 m<sup>2</sup>) to 433 ft<sup>2</sup> (40.19 m<sup>2</sup>)**

Total Area: **from 1,436.7 ft<sup>2</sup> (133.47 m<sup>2</sup>) to 1,542.51 ft<sup>2</sup> (143.30 m<sup>2</sup>)**

View: **Dubai Water Canal and Al Khail Road**

Bedrooms: **1**

Any Concept Renderings as shown for the residences are representative only, and the Developer reserves the right to make changes or substitutions of equal or better quality for any features, materials and equipment which are included with the unit.



# FLOOR PLAN



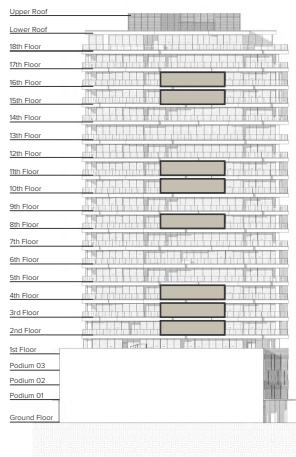
THE RITZ-CARLTON  
RESIDENCES  
DUBAI, BUSINESS BAY

## TWO-BEDROOM APARTMENT

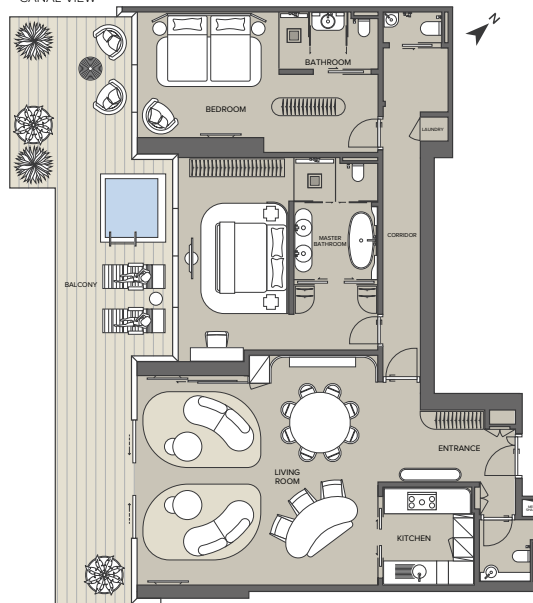


THE RITZ-CARLTON  
RESIDENCES  
DUBAI, BUSINESS BAY

South West Elevation



DUBAI WATER  
CANAL VIEW



AL KHAIL ROAD VIEW

Pool Area Internal Area Terrace Area

Apartment Type: **T2B**

Unit Number: **203, 303, 403, 803,  
1003, 1103, 1503 & 1603**

Internal Area: **from 1,871.33 ft<sup>2</sup>  
(173.85 m<sup>2</sup>) to 1,900 ft<sup>2</sup> (176.51 m<sup>2</sup>)**

External Area: **from 549.41 ft<sup>2</sup>  
(51.04 m<sup>2</sup>) to 621.40 ft<sup>2</sup> (57.73 m<sup>2</sup>)**

Total Area: **from 2,372.36 ft<sup>2</sup>  
(220.4 m<sup>2</sup>) to 2,502.38 ft<sup>2</sup>  
(232.48 m<sup>2</sup>)**

View: **Dubai Water Canal  
and Al Khail Road**

Bedrooms: **2**

Any Concept Renderings as shown for the residences are representative only, and the Developer reserves the right to make changes or substitutions of equal or better quality for any features, materials and equipment which are included with the unit.



# FLOOR PLAN



THE RITZ-CARLTON RESIDENCES  
DUBAI, BUSINESS BAY

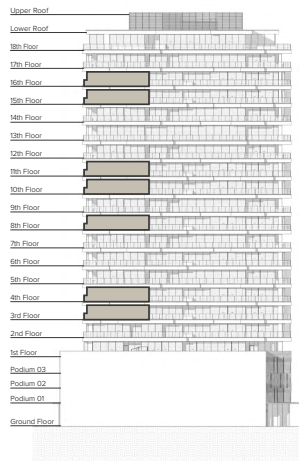
## TWO-BEDROOM APARTMENT



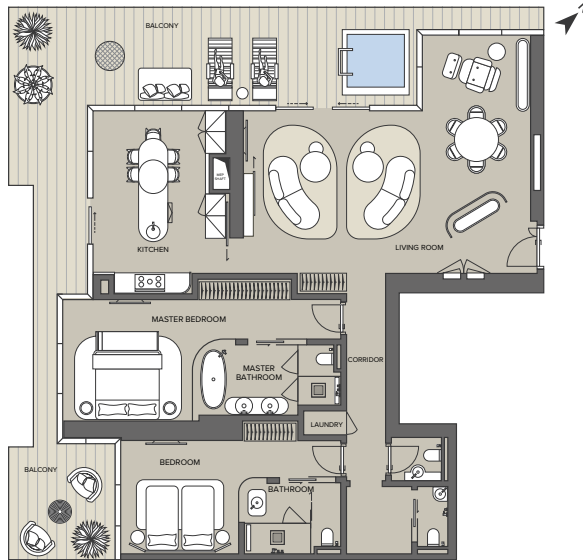
THE RITZ-CARLTON RESIDENCES

DUBAI, BUSINESS BAY

South West Elevation



DUBAI WATER CANAL VIEW



Pool Area Internal Area Terrace Area

Apartment Type: **T2C**

Unit Number: **305, 405, 805, 1005, 1105, 1505 & 1605**

Internal Area: **1,806.09 ft<sup>2</sup> (167.79 m<sup>2</sup>) to 1,834.30 ft<sup>2</sup> (170.41 m<sup>2</sup>)**

External Area: **from 713.77 ft<sup>2</sup> (66.31 m<sup>2</sup>) to 757.76 ft<sup>2</sup> (70.40 m<sup>2</sup>)**

Total Area: **from 2,534.83 ft<sup>2</sup> (235.49 m<sup>2</sup>) to 2,565.70 ft<sup>2</sup> (238.36 m<sup>2</sup>)**

View: **Dubai Water Canal**

Bedrooms: **2**

Any Concept Renderings as shown for the residences are representative only, and the Developer reserves the right to make changes or substitutions of equal or better quality for any features, materials and equipment which are included with the unit.



# FLOOR PLAN



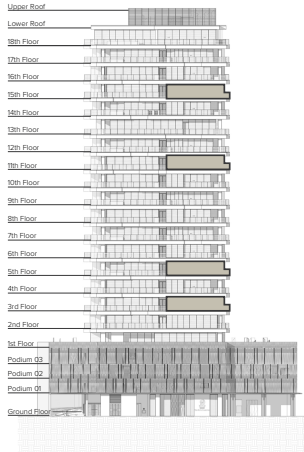
**EXCLUSIVELINKS**  
Real Estate Brokers



**THE RITZ-CARLTON RESIDENCES**  
DUBAI, BUSINESS BAY

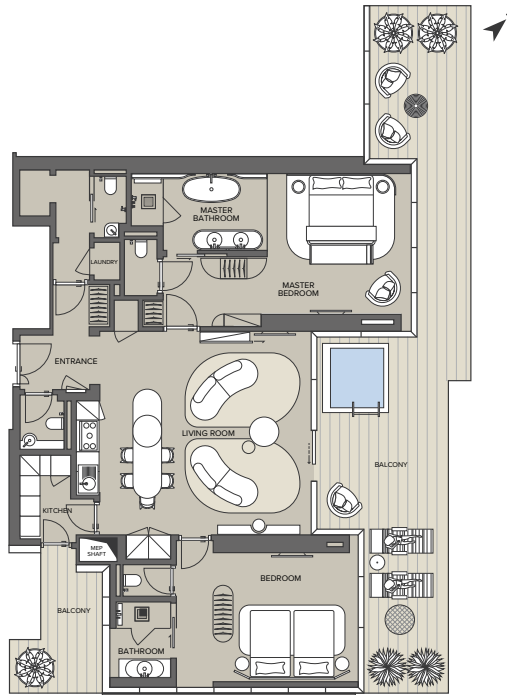
## TWO-BEDROOM APARTMENT

South East Elevation



Pool Area Internal Area Terrace Area

DUBAI WATER CANAL VIEW



AL KHAIL ROAD VIEW



**THE RITZ-CARLTON RESIDENCES**  
DUBAI, BUSINESS BAY

Apartment Type: **T2D**

Unit Number: **302, 501, 1102 & 1502**

Internal Area: **from 1,574.23 ft<sup>2</sup> (146.25 m<sup>2</sup>) to 1,596.85 ft<sup>2</sup> (148.35 m<sup>2</sup>)**

External Area: **from 610.68 ft<sup>2</sup> (56.73 m<sup>2</sup>) to 771.54 ft<sup>2</sup> (71.68 m<sup>2</sup>)**

Total Area: **from 2,191.68 ft<sup>2</sup> (203.61 m<sup>2</sup>) to 2,356.70 ft<sup>2</sup> (218.94 m<sup>2</sup>)**

View: **Dubai Water Canal and Al Khail Road**

Bedrooms: **2**

Any Concept Renderings as shown for the residences are representative only, and the Developer reserves the right to make changes or substitutions of equal or better quality for any features, materials and equipment which are included with the unit.



# FLOOR PLAN



**EXCLUSIVELINKS**  
Real Estate Brokers



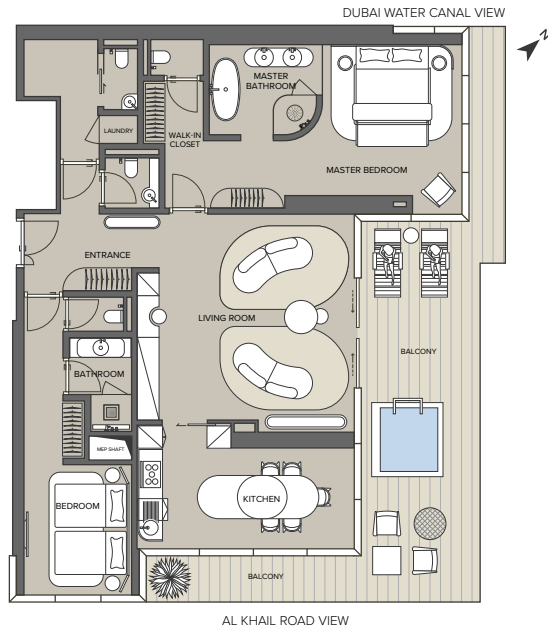
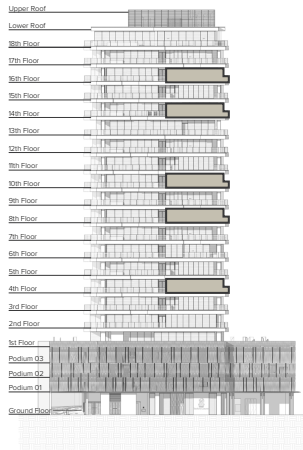
**THE RITZ-CARLTON RESIDENCES**  
DUBAI, BUSINESS BAY

## TWO-BEDROOM APARTMENT



**THE RITZ-CARLTON RESIDENCES**  
DUBAI, BUSINESS BAY

South East Elevation



Pool Area Internal Area Terrace Area

Apartment Type: **T2A**

Unit Number: **402, 802, 1002, 1401 & 1602**

Internal Area: **from 1,657.81 ft<sup>2</sup> (154.01 m<sup>2</sup>) to 1,680.69 ft<sup>2</sup> (156.17 m<sup>2</sup>)**

External Area: **from 542.05 ft<sup>2</sup> (50.36 m<sup>2</sup>) to 716.63 ft<sup>2</sup> (66.58 m<sup>2</sup>)**

Total Area: **from 2,199.86 ft<sup>2</sup> (204.37 m<sup>2</sup>) to 2,397.59 ft<sup>2</sup> (222.74 m<sup>2</sup>)**

View: **Dubai Water Canal and Al Khail Road**

Bedrooms: **2**

Any Concept Renderings as shown for the residences are representative only, and the Developer reserves the right to make changes or substitutions of equal or better quality for any features, materials and equipment which are included with the unit.



# FLOOR PLAN



**EXCLUSIVELINKS**  
Real Estate Brokers



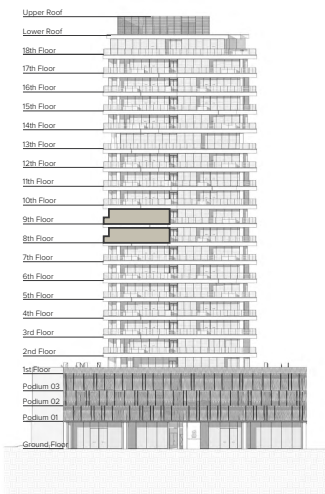
**THE RITZ-CARLTON RESIDENCES**  
DUBAI, BUSINESS BAY

## TWO-BEDROOM APARTMENT

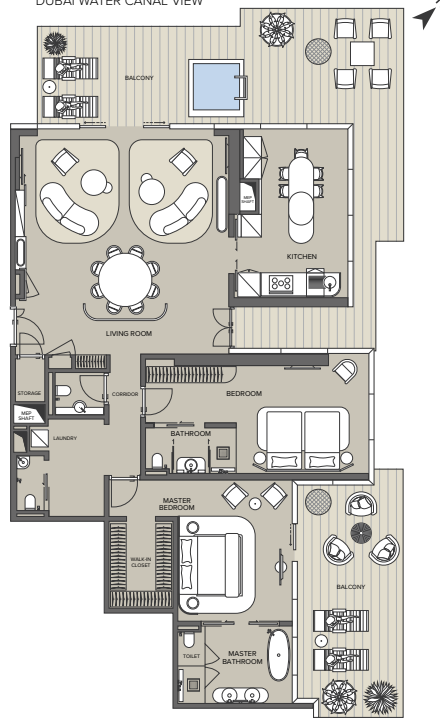


**THE RITZ-CARLTON RESIDENCES**  
DUBAI, BUSINESS BAY

North West Elevation



DUBAI WATER CANAL VIEW



Pool Area Internal Area Terrace Area

Apartment Type: **T2E**

Unit Number: **804 & 903**

Internal Area: **from 2,044.62 ft<sup>2</sup> (189.86 m<sup>2</sup>) to 2,044.72 ft<sup>2</sup> (189.96 m<sup>2</sup>)**

External Area: **from 1,029.38 ft<sup>2</sup> (95.63 m<sup>2</sup>) to 1,231.17 ft<sup>2</sup> (114.38 m<sup>2</sup>)**

Total Area: **from 3,073 ft<sup>2</sup> (285.49 m<sup>2</sup>) to 3,275.89 ft<sup>2</sup> (304.34 m<sup>2</sup>)**

View: **Dubai Water Canal**

Bedrooms: **2**

Any Concept Renderings as shown for the residences are representative only, and the Developer reserves the right to make changes or substitutions of equal or better quality for any features, materials and equipment which are included with the unit.



# FLOOR PLAN



**EXCLUSIVELINKS**  
Real Estate Brokers



**THE RITZ-CARLTON RESIDENCES**  
DUBAI, BUSINESS BAY

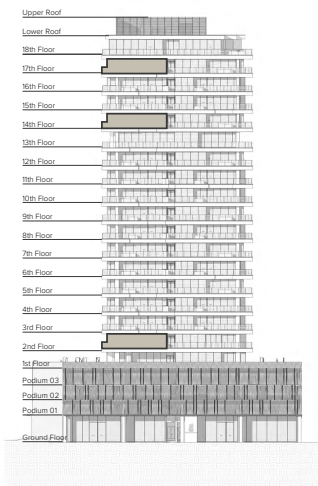
## THREE-BEDROOM APARTMENT



**THE RITZ-CARLTON RESIDENCES**

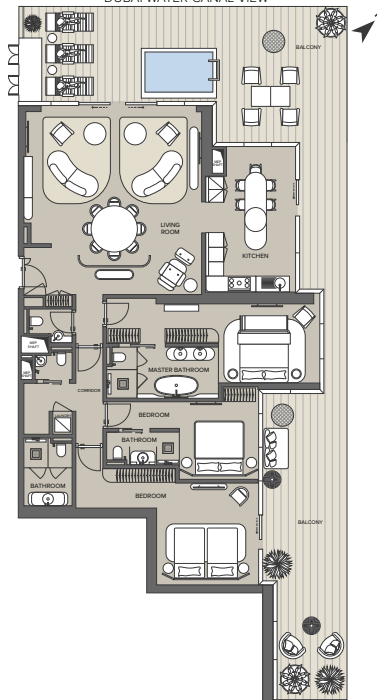
DUBAI, BUSINESS BAY

North West Elevation



Pool Area Internal Area Terrace Area

DUBAI WATER CANAL VIEW



Apartment Type: **T3B2**

Unit Number: **204, 1403 & 1703**

Internal Area: **from 2,134.94 ft<sup>2</sup> (198.34 m<sup>2</sup>) to 2,165.33 ft<sup>2</sup> (201.16 m<sup>2</sup>)**

External Area: **from 1,083 ft<sup>2</sup> (100.62 m<sup>2</sup>) to 1,332.33 ft<sup>2</sup> (123.78 m<sup>2</sup>)**

Total Area: **from 3,246.39 ft<sup>2</sup> (301.60 m<sup>2</sup>) to 3,467.27 ft<sup>2</sup> (322.12 m<sup>2</sup>)**

View: **Dubai Water Canal**

Bedrooms: **3**

Any Concept Renderings as shown for the residences are representative only, and the Developer reserves the right to make changes or substitutions of equal or better quality for any features, materials and equipment which are included with the unit.



# FLOOR PLAN

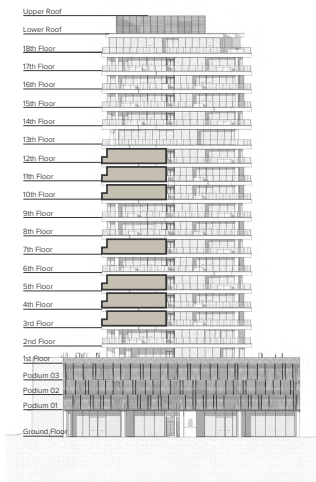


## THREE-BEDROOM APARTMENT

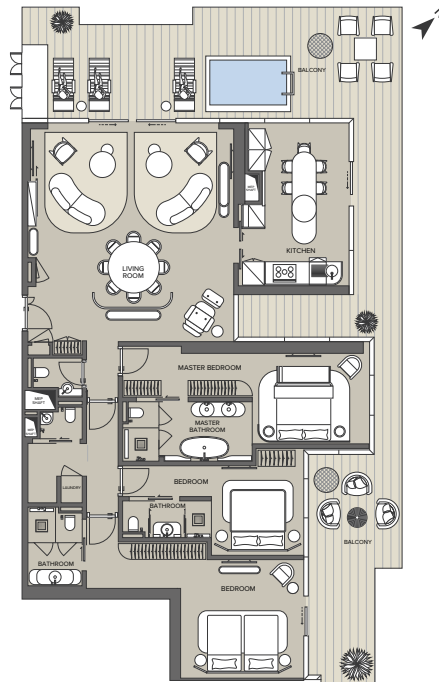


**THE RITZ-CARLTON RESIDENCES**  
DUBAI, BUSINESS BAY

North West Elevation



DUBAI WATER CANAL VIEW



Apartment Type: **T3B1**

Unit Number: **304, 404, 503, 703, 1004, 1104, 1203, 1504 & 1604**

Internal Area: **from 2,148 ft<sup>2</sup> (199.55 m<sup>2</sup>) to 2,189.03 ft<sup>2</sup> (203.37m<sup>2</sup>)**

External Area: **from 1,026 ft<sup>2</sup> (95.35 m<sup>2</sup>) to 1,271 ft<sup>2</sup> (118.08 m<sup>2</sup>)**

Total Area: **from 3,184.68 ft<sup>2</sup> (295.86 m<sup>2</sup>) to 3,434.81 ft<sup>2</sup> (319.10 m<sup>2</sup>)**

View: **Dubai Water Canal**

Bedrooms: **3**

Any Concept Renderings as shown for the residences are representative only, and the Developer reserves the right to make changes or substitutions of equal or better quality for any features, materials and equipment which are included with the unit.



# FLOOR PLAN



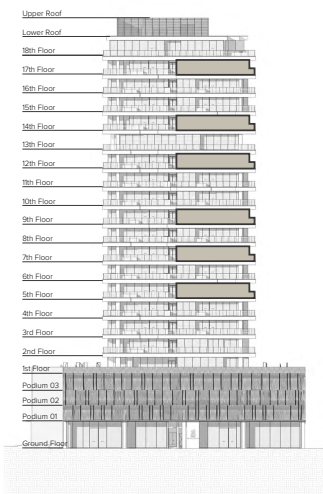
THE RITZ-CARLTON  
RESIDENCES  
DUBAI, BUSINESS BAY

## THREE-BEDROOM APARTMENT

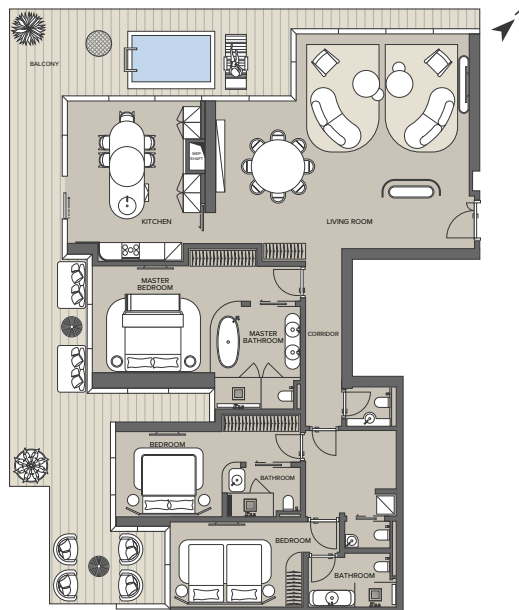


THE RITZ-CARLTON  
RESIDENCES  
DUBAI, BUSINESS BAY

North West Elevation



DUBAI WATER CANAL VIEW



Pool Area Internal Area Terrace Area

Apartment Type: **T3A**

Unit Number: **504, 704, 904, 1204, 1404 & 1704**

Internal Area: **from 2,169 ft<sup>2</sup> (201.49 m<sup>2</sup>) to 2,198 ft<sup>2</sup> (204.21 m<sup>2</sup>)**

External Area: **from 905 ft<sup>2</sup> (84.06 m<sup>2</sup>) to 961 ft<sup>2</sup> (89.28 m<sup>2</sup>)**

Total Area: **from 3,086.38 ft<sup>2</sup> (286.73 m<sup>2</sup>) to 3,153.58 ft<sup>2</sup> (292.97 m<sup>2</sup>)**

View: **Dubai Water Canal**

Bedrooms: **3**

Any Concept Renderings as shown for the residences are representative only, and the Developer reserves the right to make changes or substitutions of equal or better quality for any features, materials and equipment which are included with the unit.



# FLOOR PLAN



THE RITZ-CARLTON RESIDENCES  
DUBAI, BUSINESS BAY

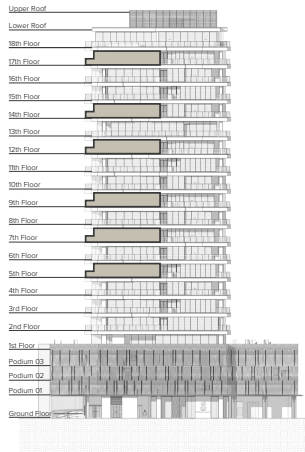
## THREE-BEDROOM APARTMENT



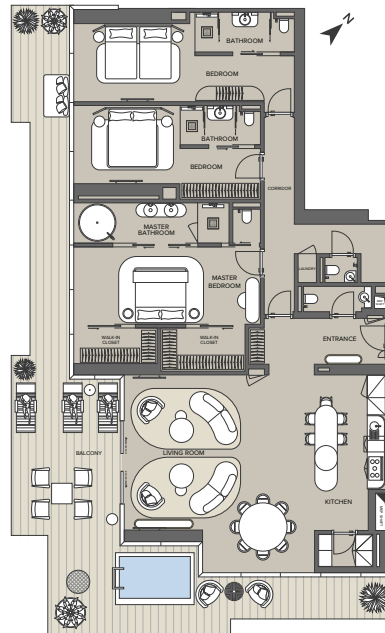
THE RITZ-CARLTON RESIDENCES

DUBAI, BUSINESS BAY

South East Elevation



DUBAI WATER CANAL VIEW



AL KHALIL ROAD VIEW

Pool Area Internal Area Terrace Area

Apartment Type: **T3C1**

Unit Number: **502, 702, 902, 1202, 1402 & 1702**

Internal Area: **from 2,382 ft<sup>2</sup> (221.31 m<sup>2</sup>) to 2,412 ft<sup>2</sup> (224.11 m<sup>2</sup>)**

External Area: **from 894 ft<sup>2</sup> (83.05 m<sup>2</sup>) to 995 ft<sup>2</sup> (92.48 m<sup>2</sup>)**

Total Area: **from 3,306.36 ft<sup>2</sup> (307.17 m<sup>2</sup>) to 3,405.46 ft<sup>2</sup> (316.38 m<sup>2</sup>)**

View: **Dubai Water Canal and Al Khalil Road**

Bedrooms: **3**

Any Concept Renderings as shown for the residences are representative only, and the Developer reserves the right to make changes or substitutions of equal or better quality for any features, materials and equipment which are included with the unit.





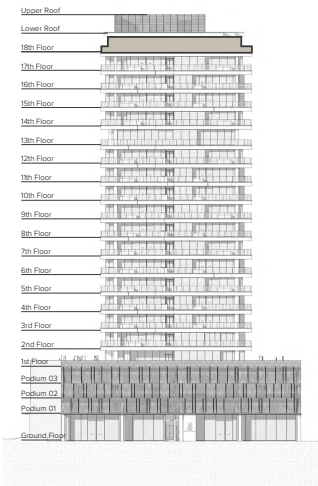
# FLOOR PLAN



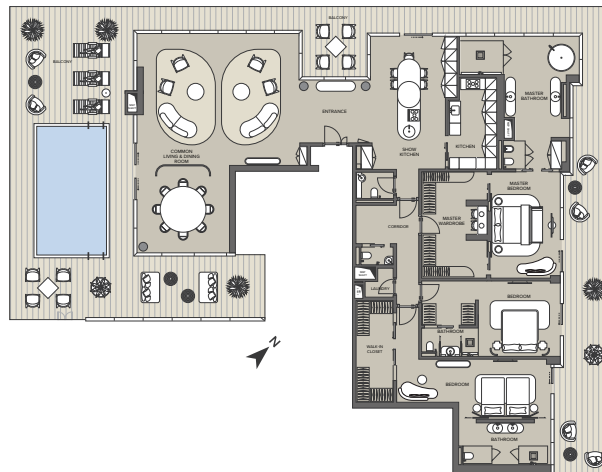
THE RITZ-CARLTON  
RESIDENCES  
DUBAI, BUSINESS BAY

## PENTHOUSE 2

North West Elevation



DUBAI WATER CANAL VIEW



AL KHAIL  
ROAD VIEW



THE RITZ-CARLTON  
RESIDENCES  
DUBAI, BUSINESS BAY

Pool Area Internal Area Terrace Area

Apartment Type: **PEN-02**  
Unit Number: **1802**  
Internal Area: **3,656 ft<sup>2</sup> (339.61 m<sup>2</sup>)**  
External Area: **2,467 ft<sup>2</sup> (229.1 m<sup>2</sup>)**  
Total Area: **6,123 ft<sup>2</sup> (568.77 m<sup>2</sup>)**  
View: **Dubai Water Canal  
and Al Khail Road**  
Bedrooms: **3**

Any Concept Renderings as shown for the residences are representative only, and the Developer reserves the right to make changes or substitutions of equal or better quality for any features, materials and equipment which are included with the unit.



# FLOOR PLAN



**EXCLUSIVELINKS**  
Real Estate Brokers

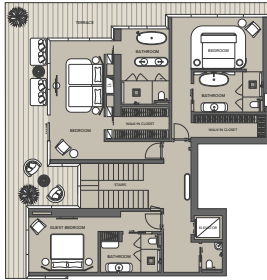


**THE RITZ-CARLTON  
RESIDENCES**  
DUBAI, BUSINESS BAY

## VILLA

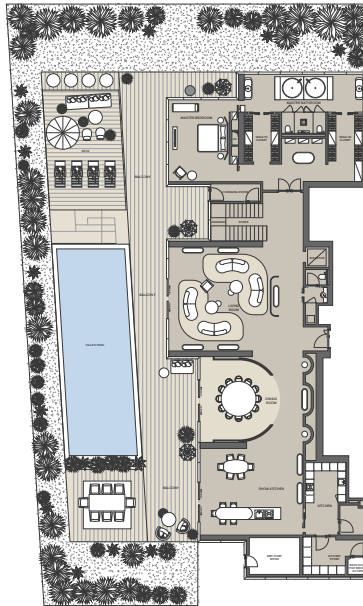
2nd Floor Plan

DUBAI WATER CANAL VIEW



1st Floor Plan

DUBAI WATER CANAL VIEW



**THE RITZ-CARLTON  
RESIDENCES**  
DUBAI, BUSINESS BAY

Pool Area Internal Area Terrace Area

Apartment Type: **VILLA**  
Unit Number: **101**  
Internal Area: **6,172 ft<sup>2</sup> (573.36 m<sup>2</sup>)**  
External Area: **7,207 ft<sup>2</sup> (669.5 m<sup>2</sup>)**  
Total Area: **13,379 ft<sup>2</sup> (1242.9 m<sup>2</sup>)**  
View: **Dubai Water Canal**  
Bedrooms: **4**

Any Concept Renderings as shown for the residences are representative only, and the Developer reserves the right to make changes or substitutions of equal or better quality for any features, materials and equipment which are included with the unit.



# FLOOR PLAN

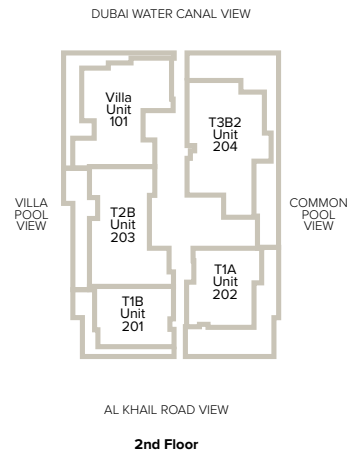
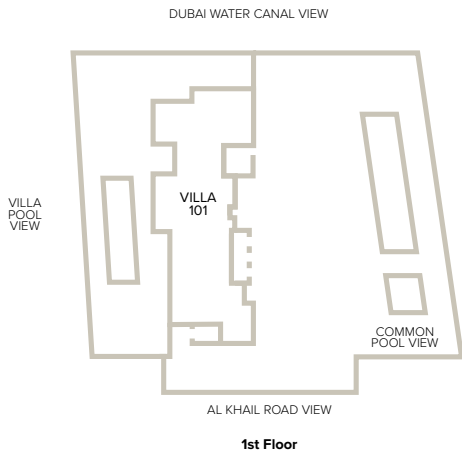


**THE RITZ-CARLTON  
RESIDENCES**  
DUBAI, BUSINESS BAY

## FLOORS 1 & 2



**THE RITZ-CARLTON  
RESIDENCES**  
DUBAI, BUSINESS BAY



Any Concept Renderings as shown for the residences are representative only, and the Developer reserves the right to make changes or substitutions of equal or better quality for any features, materials and equipment which are included with the unit.



# FLOOR PLAN



**EXCLUSIVELINKS**  
Real Estate Brokers



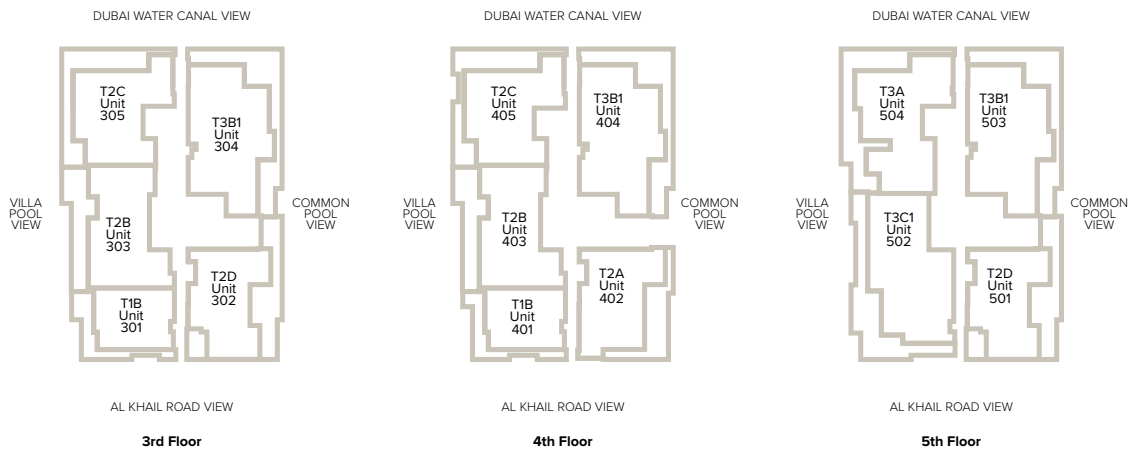
**THE RITZ-CARLTON  
RESIDENCES**  
DUBAI, BUSINESS BAY

## FLOORS 3, 4 & 5



**THE RITZ-CARLTON  
RESIDENCES**

DUBAI, BUSINESS BAY



Any Concept Renderings as shown for the residences are representative only, and the Developer reserves the right to make changes or substitutions of equal or better quality for any features, materials and equipment which are included with the unit.



# FLOOR PLAN



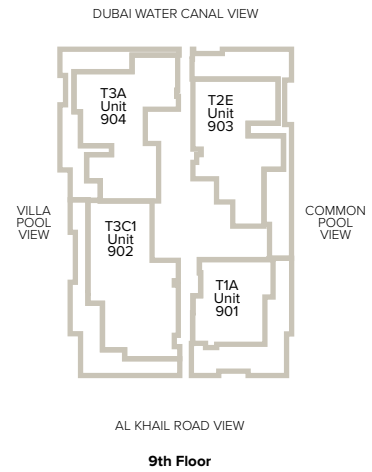
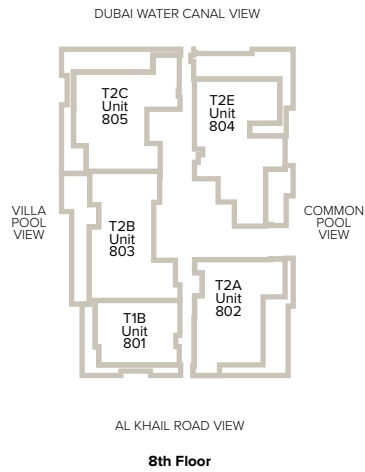
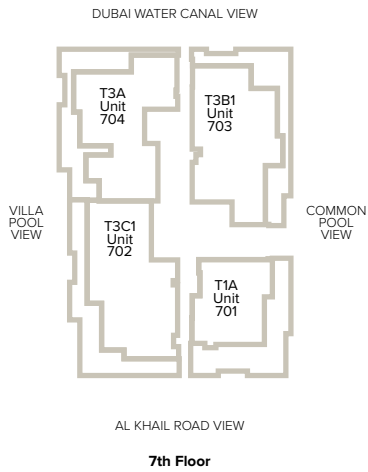
THE RITZ-CARLTON  
RESIDENCES  
DUBAI, BUSINESS BAY

## FLOORS 7, 8 & 9



THE RITZ-CARLTON  
RESIDENCES

DUBAI, BUSINESS BAY



Any Concept Renderings as shown for the residences are representative only, and the Developer reserves the right to make changes or substitutions of equal or better quality for any features, materials and equipment which are included with the unit.



# FLOOR PLAN



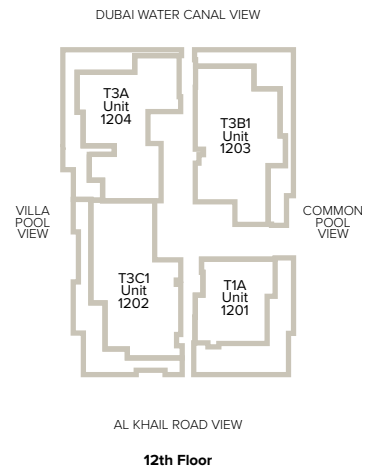
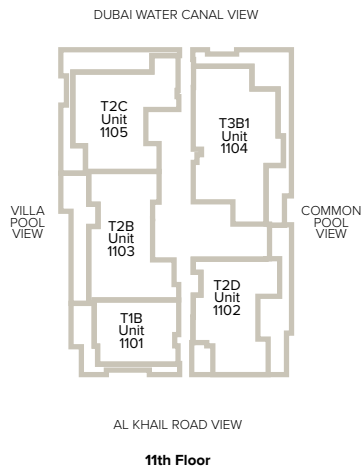
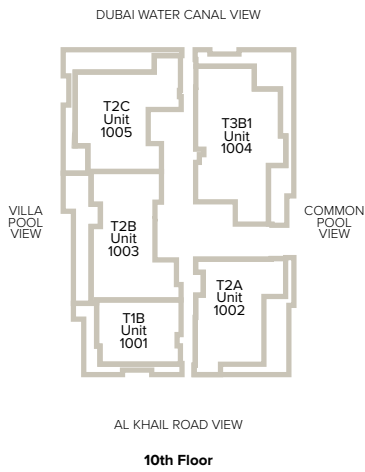
THE RITZ-CARLTON  
RESIDENCES  
DUBAI, BUSINESS BAY

## FLOORS 10, 11, & 12



THE RITZ-CARLTON  
RESIDENCES

DUBAI, BUSINESS BAY



Any Concept Renderings as shown for the residences are representative only, and the Developer reserves the right to make changes or substitutions of equal or better quality for any features, materials and equipment which are included with the unit.



# FLOOR PLAN

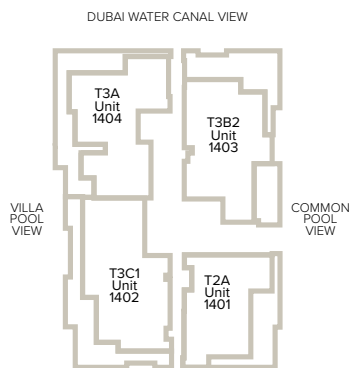


THE RITZ-CARLTON  
RESIDENCES  
DUBAI, BUSINESS BAY

## FLOORS 14, 15 & 16

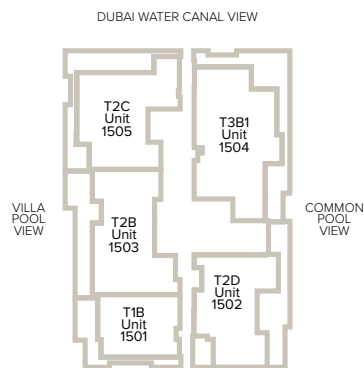


THE RITZ-CARLTON  
RESIDENCES  
DUBAI, BUSINESS BAY



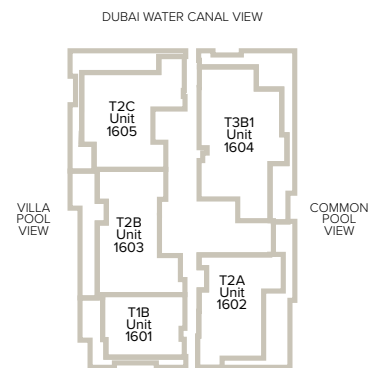
AL KHAIL ROAD VIEW

14th Floor



AL KHAIL ROAD VIEW

15th Floor



AL KHAIL ROAD VIEW

16th Floor

Any Concept Renderings as shown for the residences are representative only, and the Developer reserves the right to make changes or substitutions of equal or better quality for any features, materials and equipment which are included with the unit.



# FLOOR PLAN



**EXCLUSIVELINKS**  
Real Estate Brokers



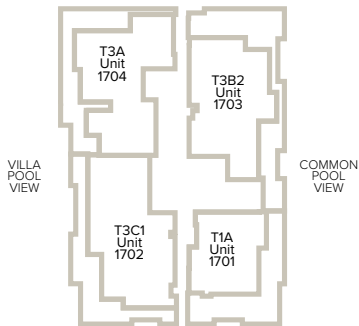
**THE RITZ-CARLTON  
RESIDENCES**  
DUBAI, BUSINESS BAY

## FLOORS 17 & 18



**THE RITZ-CARLTON  
RESIDENCES**  
DUBAI, BUSINESS BAY

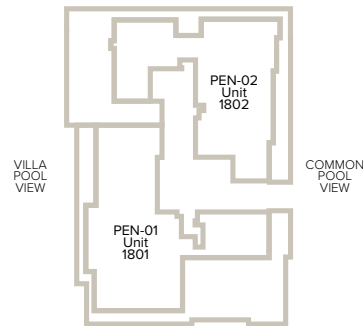
DUBAI WATER CANAL VIEW



AL KHAIL ROAD VIEW

**17th Floor**

DUBAI WATER CANAL VIEW



AL KHAIL ROAD VIEW

**18th Floor**

Any Concept Renderings as shown for the residences are representative only, and the Developer reserves the right to make changes or substitutions of equal or better quality for any features, materials and equipment which are included with the unit.