



# FLOOR PLAN



MARINA  
SHORES

AT DUBAI MARINA

EMAAR

## MARINA SHORES

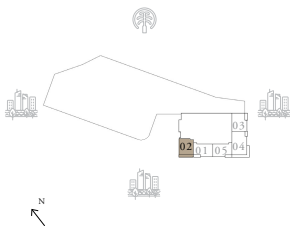
AT DUBAI MARINA

### 2 BEDROOM TYPE A

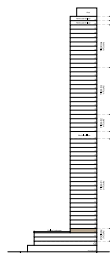
PODIUM LEVEL 03 UNIT 02

SUITE AREA	1049.05 SQ.FT.	97.46 SQ.M.
BALCONY AREA	170.93 SQ.FT.	15.88 SQ.M.
TOTAL AREA	1219.98 SQ.FT.	113.34 SQ.M.

KEY PLAN



KEY SECTION



TYPICAL LEVEL

FLOOR PLAN 1. All dimensions are in imperial and metric, and measured from finish to finish excluding construction tolerances. 2. All materials, dimensions, and drawings are approximate only. 3. Information is subject to change without notice, at developer's absolute discretion. 4. Actual area may vary from the stated area. 5. Drawings not to scale. 6. All images used are for illustrative purposes only and do not represent the actual size, features, specifications, fittings, and furnishings. 7. The developer reserves the right to make revisions / alterations, at it's absolute discretion, without any liability whatsoever.

EMAAR



# FLOOR PLAN



MARINA  
SHORES

AT DUBAI MARINA

EMAAR

## MARINA SHORES

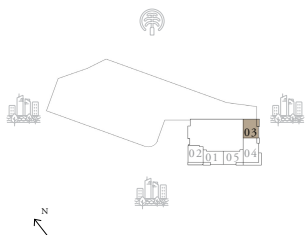
AT DUBAI MARINA

### 2 BEDROOM TYPE C

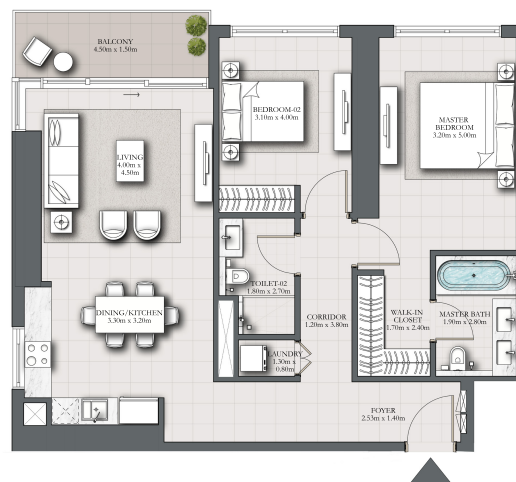
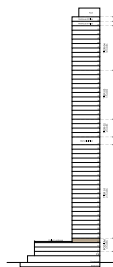
PODIUM LEVEL 03 UNIT 03

SUITE AREA	1107.28 SQ.FT.	102.87 SQ.M.
BALCONY AREA	82.77 SQ.FT.	7.69 SQ.M.
TOTAL AREA	1190.06 SQ.FT.	110.56 SQ.M.

KEY PLAN



KEY SECTION



TYPICAL LEVEL

FLOOR PLAN 1. All dimensions are in imperial and metric, and measured from finish to finish excluding construction tolerances. 2. All materials, dimensions, and drawings are approximate only. 3. Information is subject to change without notice, at developer's absolute discretion. 4. Actual area may vary from the stated area. 5. Drawings not to scale. 6. All images used are for illustrative purposes only and do not represent the actual size, features, specifications, fittings, and furnishings. 7. The developer reserves the right to make revisions / alterations, at it's absolute discretion, without any liability whatsoever.

EMAAR



# FLOOR PLAN



MARINA  
SHORES  
AT DUBAI MARINA  
EMAAR

## MARINA SHORES

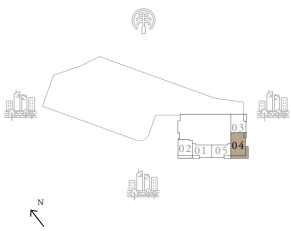
AT DUBAI MARINA

### 3 BEDROOM TYPE A

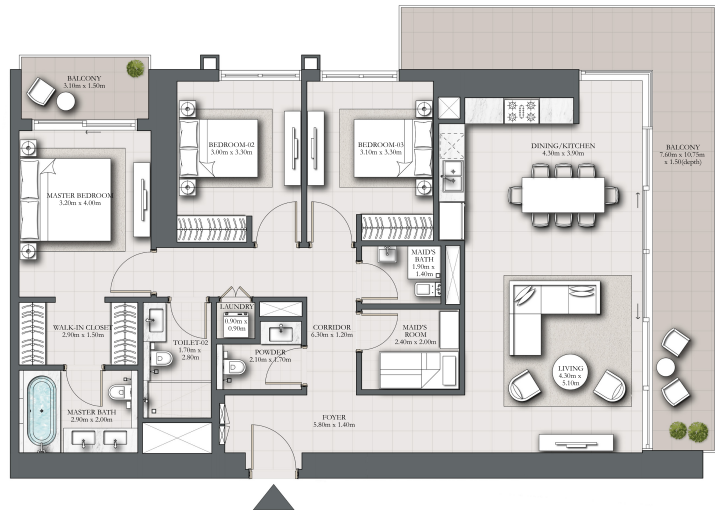
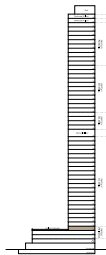
PODIUM LEVEL 03 UNIT 04

SUITE AREA	1475.95 SQ.FT.	137.12 SQ.M.
BALCONY AREA	372.32 SQ.FT.	34.59 SQ.M.
TOTAL AREA	1848.27 SQ.FT.	171.71 SQ.M.

KEY PLAN



KEY SECTION



TYPICAL LEVEL

FLOOR PLAN 1. All dimensions are in imperial and metric, and measured from finish to finish excluding construction tolerances. 2. All materials, dimensions, and drawings are subject to change without notice, at developer's absolute discretion. 4. Actual area may vary from the stated area. 5. Drawings not to scale. 6. All images used are for illustrative purposes only and do not represent the actual size, features, specifications, fittings, and furnishings. 7. The developer reserves the right to make revisions / alterations, at it's absolute discretion, without any liability whatsoever.

EMAAR



# FLOOR PLAN



MARINA  
SHORES

AT DUBAI MARINA

EMAAR

## MARINA SHORES

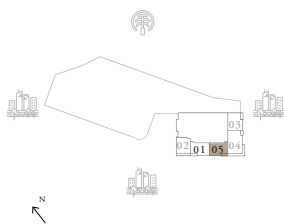
AT DUBAI MARINA

### 2 BEDROOM TYPE B

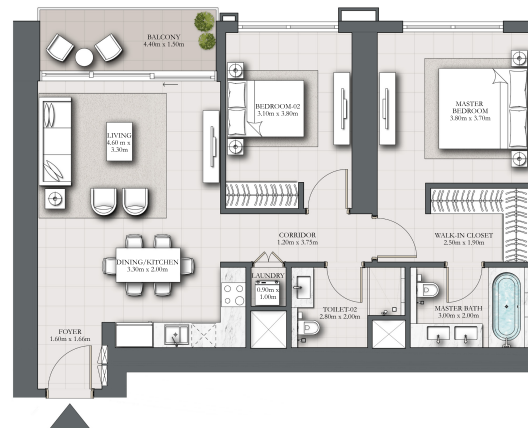
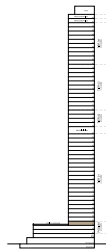
PODIUM LEVEL 03 UNIT 05

SUITE AREA	1061.86 SQ.FT.	98.65 SQ.M.
BALCONY AREA	85.68 SQ.FT.	7.96 SQ.M.
TOTAL AREA	1147.54 SQ.FT.	106.61 SQ.M.

KEY PLAN



KEY SECTION



TYPICAL LEVEL

FLOOR PLAN 1. All dimensions are in imperial and metric, and measured from finish to finish excluding construction tolerances. 2. All materials, dimensions, and drawings are approximate only. 3. Information is subject to change without notice, at developer's absolute discretion. 4. Actual area may vary from the stated area. 5. Drawings not to scale. 6. All images used are for illustrative purposes only and do not represent the actual size, features, specifications, fittings, and furnishings. 7. The developer reserves the right to make revisions / alterations, at it's absolute discretion, without any liability whatsoever.

EMAAR



# FLOOR PLAN



EXCLUSIVELINKS  
Real Estate Brokers

MARINA  
SHORES

AT DUBAI MARINA

EMAAR

## MARINA SHORES

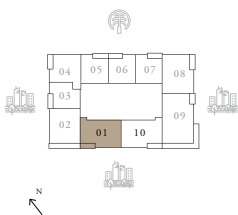
AT DUBAI MARINA

### 2 BEDROOM TYPE B2

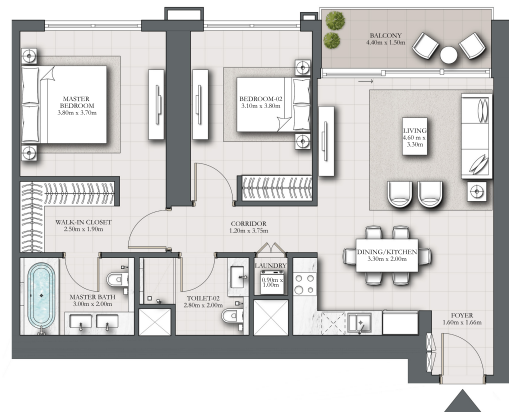
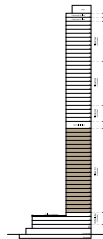
LEVELS 04-24 UNIT 01

SUITE AREA	1061.86 SQ.FT.	98.65 SQ.M.
BALCONY AREA	85.68 SQ.FT.	7.96 SQ.M.
TOTAL AREA	1147.54 SQ.FT.	106.61 SQ.M.

KEY PLAN



KEY SECTION



TYPICAL LEVEL

FLOOR PLAN 1. All dimensions are in imperial and metric, and measured from finish to finish excluding construction tolerances. 2. All materials, dimensions, and drawings are approximate only. 3. Information is subject to change without notice, at developer's absolute discretion. 4. Actual area may vary from the stated area. 5. Drawings not to scale. 6. All images used are for illustrative purposes only and do not represent the actual size, features, specifications, fittings, and furnishings. 7. The developer reserves the right to make revisions / alterations, at it's absolute discretion, without any liability whatsoever.

EMAAR



# FLOOR PLAN



EXCLUSIVELINKS

Real Estate Brokers

MARINA  
SHORES

AT DUBAI MARINA

EMAAR

## MARINA SHORES

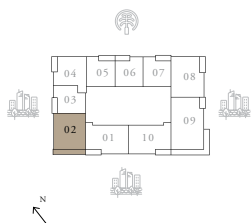
AT DUBAI MARINA

### 2 BEDROOM TYPE A

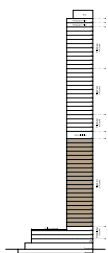
LEVELS 04-24 UNIT 02

SUITE AREA	1049.16 SQ.FT.	97.47 SQ.M.
BALCONY AREA	170.93 SQ.FT.	15.88 SQ.M.
TOTAL AREA	1220.09 SQ.FT.	113.35 SQ.M.

KEY PLAN



KEY SECTION



TYPICAL LEVEL

FLOOR PLAN 1. All dimensions are in imperial and metric, and measured from finish to finish excluding construction tolerances. 2. All materials, dimensions, and drawings are approximate only. 3. Information is subject to change without notice, at developer's absolute discretion. 4. Actual area may vary from the stated area. 5. Drawings not to scale. 6. All images used are for illustrative purposes only and do not represent the actual size, features, specifications, fittings, and furnishings. 7. The developer reserves the right to make revisions / alterations, at its absolute discretion, without any liability whatsoever.

EMAAR



# FLOOR PLAN



MARINA  
SHORES  
AT DUBAI MARINA  
EMAAR

## MARINA SHORES

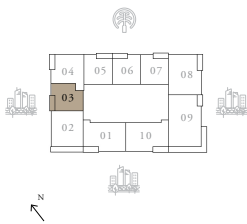
AT DUBAI MARINA

### 1 BEDROOM TYPE D

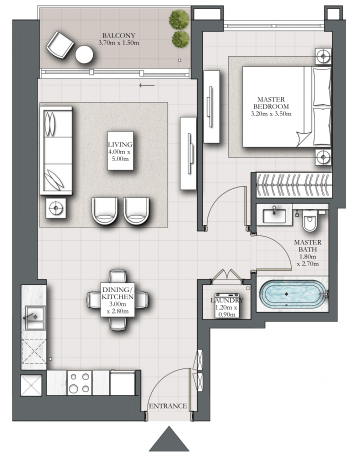
LEVELS 04-24 UNIT 03

SUITE AREA	675.65 SQ.FT.	62.77 SQ.M.
BALCONY AREA	73.63 SQ.FT.	6.84 SQ.M.
TOTAL AREA	749.28 SQ.FT.	69.61 SQ.M.

KEY PLAN



KEY SECTION



TYPICAL LEVEL

FLOOR PLAN 1. All dimensions are in imperial and metric, and measured from finish to finish excluding construction tolerances. 2. All materials, dimensions, and drawings are approximate only. 3. Information is subject to change without notice, at developer's absolute discretion. 4. Actual area may vary from the stated area. 5. Drawings not to scale. 6. All images used are for illustrative purposes only and do not represent the actual size, features, specifications, fittings, and furnishings. 7. The developer reserves the right to make revisions / alterations, at its absolute discretion, without any liability whatsoever.

EMAAR



# FLOOR PLAN



MARINA  
SHORES  
AT DUBAI MARINA  
EMAAR

## MARINA SHORES

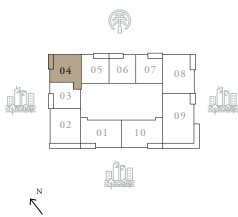
AT DUBAI MARINA

### 1 BEDROOM TYPE C

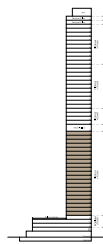
LEVELS 04-24 UNIT 04

SUITE AREA	799.54 SQ.FT.	74.28 SQ.M.
BALCONY AREA	78.36 SQ.FT.	7.28 SQ.M.
TOTAL AREA	877.90 SQ.FT.	81.56 SQ.M.

KEY PLAN



KEY SECTION



TYPICAL LEVEL

FLOOR PLAN 1. All dimensions are in imperial and metric, and measured from finish to finish excluding construction tolerances. 2. All materials, dimensions, and drawings are approximate only. 3. Information is subject to change without notice, at developer's absolute discretion. 4. Actual area may vary from the stated area. 5. Drawings not to scale. 6. All images used are for illustrative purposes only and do not represent the actual size, features, specifications, fittings, and furnishings. 7. The developer reserves the right to make revisions / alterations, at it's absolute discretion, without any liability whatsoever.

EMAAR



# FLOOR PLAN



EXCLUSIVELINKS

Real Estate Brokers

MARINA  
SHORES

AT DUBAI MARINA

EMAAR

MARINA  
SHORES

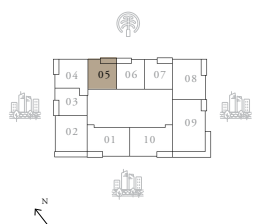
AT DUBAI MARINA

## 1 BEDROOM TYPE B

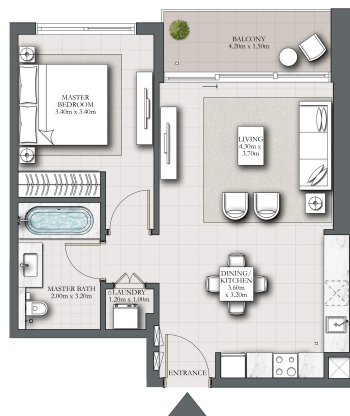
LEVELS 04-24 UNIT 05

SUITE AREA	686.52 SQ.FT.	63.78 SQ.M.
BALCONY AREA	82.24 SQ.FT.	7.64 SQ.M.
TOTAL AREA	768.76 SQ.FT.	71.42 SQ.M.

KEY PLAN



KEY SECTION



TYPICAL LEVEL

FLOOR PLAN 1. All dimensions are in imperial and metric, and measured from finish to finish excluding construction tolerances. 2. All materials, dimensions, and drawings are approximate only. 3. Information is subject to change without notice, at developer's absolute discretion. 4. Actual area may vary from the stated area. 5. Drawings not to scale. 6. All images used are for illustrative purposes only and do not represent the actual size, features, specifications, fittings, and furnishings. 7. The developer reserves the right to make revisions / alterations, at it's absolute discretion, without any liability whatsoever.

EMAAR



# FLOOR PLAN



MARINA  
SHORES

AT DUBAI MARINA

EMAAR

## MARINA SHORES

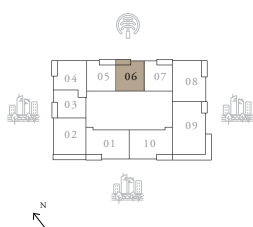
AT DUBAI MARINA

### 1 BEDROOM TYPE A2

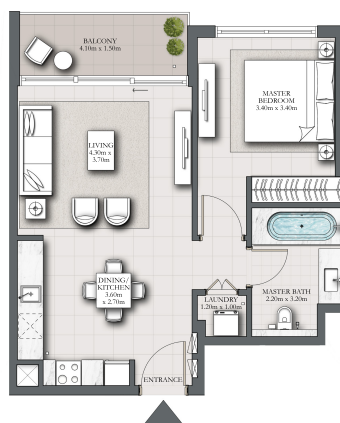
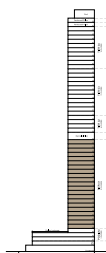
LEVELS 04-24 UNIT 06

SUITE AREA	669.19 SQ.FT.	62.17 SQ.M.
BALCONY AREA	81.27 SQ.FT.	7.55 SQ.M.
TOTAL AREA	750.46 SQ.FT.	69.72 SQ.M.

KEY PLAN



KEY SECTION



TYPICAL LEVEL

FLOOR PLAN 1. All dimensions are in imperial and metric, and measured from finish to finish excluding construction tolerances. 2. All materials, dimensions, and drawings are approximate only. 3. Information is subject to change without notice, at developer's absolute discretion. 4. Actual area may vary from the stated area. 5. Drawings not to scale. 6. All images used are for illustrative purposes only and do not represent the actual size, features, specifications, fittings, and furnishings. 7. The developer reserves the right to make revisions / alterations, at it's absolute discretion, without any liability whatsoever.

EMAAR



# FLOOR PLAN



MARINA  
SHORES  
AT DUBAI MARINA  
EMAAR

## MARINA SHORES

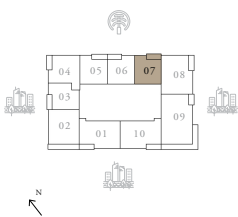
AT DUBAI MARINA

### 1 BEDROOM TYPE A

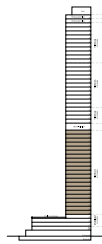
LEVELS 04-24 UNIT 07

SUITE AREA	669.62 SQ.FT.	62.21 SQ.M.
BALCONY AREA	80.51 SQ.FT.	7.48 SQ.M.
TOTAL AREA	750.14 SQ.FT.	69.69 SQ.M.

KEY PLAN



KEY SECTION



TYPICAL LEVEL

FLOOR PLAN 1. All dimensions are in imperial and metric, and measured from finish to finish excluding construction tolerances. 2. All materials, dimensions, and drawings are approximate only. 3. Information is subject to change without notice, at developer's absolute discretion. 4. Actual area may vary from the stated area. 5. Drawings not to scale. 6. All images used are for illustrative purposes only and do not represent the actual size, features, specifications, fittings, and furnishings. 7. The developer reserves the right to make revisions / alterations, at it's absolute discretion, without any liability whatsoever.

EMAAR



# FLOOR PLAN



MARINA  
SHORES  
AT DUBAI MARINA  
EMAAR

## MARINA SHORES

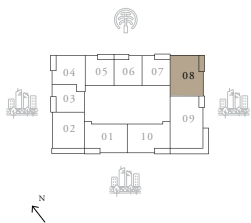
AT DUBAI MARINA

### 2 BEDROOM TYPE C

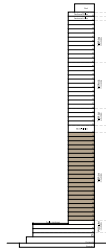
LEVELS 04-24 UNIT 08

SUITE AREA	1107.28 SQ.FT.	102.87 SQ.M.
BALCONY AREA	82.77 SQ.FT.	7.69 SQ.M.
TOTAL AREA	1190.06 SQ.FT.	110.56 SQ.M.

KEY PLAN



KEY SECTION



TYPICAL LEVEL

FLOOR PLAN 1. All dimensions are in imperial and metric, and measured from finish to finish excluding construction tolerances. 2. All materials, dimensions, and drawings are approximate only. 3. Information is subject to change without notice, at developer's absolute discretion. 4. Actual area may vary from the stated area. 5. Drawings not to scale. 6. All images used are for illustrative purposes only and do not represent the actual size, features, specifications, fittings, and furnishings. 7. The developer reserves the right to make revisions / alterations, at it's absolute discretion, without any liability whatsoever.

EMAAR



# FLOOR PLAN



MARINA  
SHORES  
AT DUBAI MARINA  
EMAAR

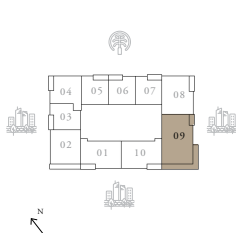
## MARINA SHORES AT DUBAI MARINA

### 3 BEDROOM TYPE A

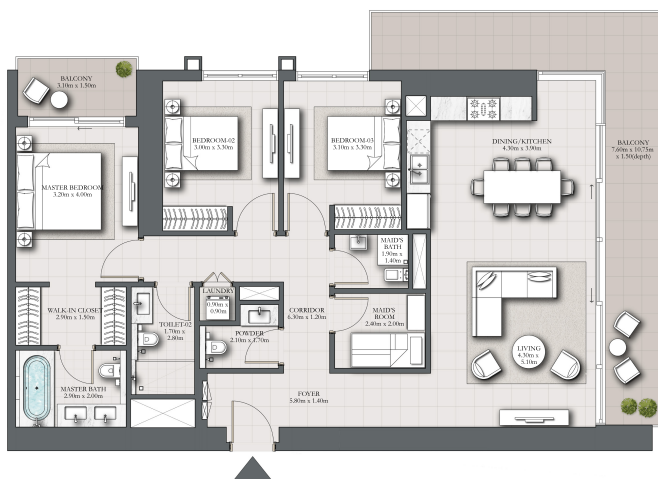
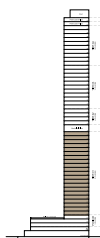
LEVELS 04-24 UNIT 09

SUITE AREA	1475.95 SQ.FT.	137.12 SQ.M.
BALCONY AREA	372.32 SQ.FT.	34.59 SQ.M.
TOTAL AREA	1848.27 SQ.FT.	171.71 SQ.M.

KEY PLAN



KEY SECTION



TYPICAL LEVEL

FLOOR PLAN 1. All dimensions are in imperial and metric, and measured from finish to finish excluding construction tolerances. 2. All materials, dimensions, and drawings are approximate only. 3. Information is subject to change without notice, at developer's absolute discretion. 4. Actual area may vary from the stated area. 5. Drawings not to scale. 6. All images used are for illustrative purposes only and do not represent the actual size, features, specifications, fittings, and furnishings. 7. The developer reserves the right to make revisions / alterations, at it's absolute discretion, without any liability whatsoever.

EMAAR



# FLOOR PLAN



MARINA  
SHORES

AT DUBAI MARINA

EMAAR

## MARINA SHORES

AT DUBAI MARINA

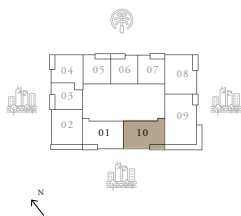
### 2 BEDROOM TYPE B

LEVELS 04-24

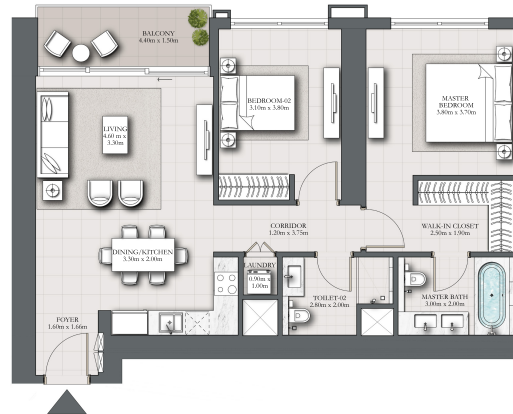
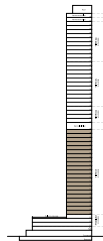
UNIT 10

SUITE AREA	1061.86 SQ.FT.	98.65 SQ.M.
BALCONY AREA	85.68 SQ.FT.	7.96 SQ.M.
TOTAL AREA	1147.54 SQ.FT.	106.61 SQ.M.

KEY PLAN



KEY SECTION



FLOOR PLAN 1. All dimensions are in imperial and metric, and measured from finish to finish excluding construction tolerances. 2. All materials, dimensions, and drawings are approximate only. 3. Information is subject to change without notice, at developer's absolute discretion. 4. Actual area may vary from the stated area. 5. Drawings not to scale. 6. All images used are for illustrative purposes only and do not represent the actual size, features, specifications, fittings, and furnishings. 7. The developer reserves the right to make revisions / alterations, at it's absolute discretion, without any liability whatsoever.

EMAAR



# FLOOR PLAN



MARINA  
SHORES

AT DUBAI MARINA

EMAAR

## MARINA SHORES

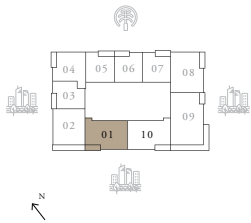
AT DUBAI MARINA

### 2 BEDROOM TYPE B2

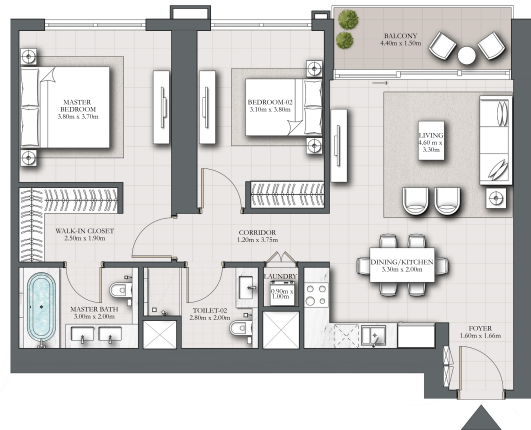
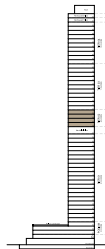
LEVELS 26-29 UNIT 01

SUITE AREA	1061.86 SQ.FT.	98.65 SQ.M.
BALCONY AREA	85.68 SQ.FT.	7.96 SQ.M.
TOTAL AREA	1147.54 SQ.FT.	106.61 SQ.M.

KEY PLAN



KEY SECTION



TYPICAL LEVEL

FLOOR PLAN 1. All dimensions are in imperial and metric, and measured from finish to finish excluding construction tolerances. 2. All materials, dimensions, and drawings are approximate only. 3. Information is subject to change without notice, at developer's absolute discretion. 4. Actual area may vary from the stated area. 5. Drawings not to scale. 6. All images used are for illustrative purposes only and do not represent the actual size, features, specifications, fittings, and furnishings. 7. The developer reserves the right to make revisions / alterations, at its absolute discretion, without any liability whatsoever.

EMAAR



# FLOOR PLAN



EXCLUSIVELINKS  
Real Estate Brokers

MARINA  
SHORES

AT DUBAI MARINA

EMAAR

## MARINA SHORES

AT DUBAI MARINA

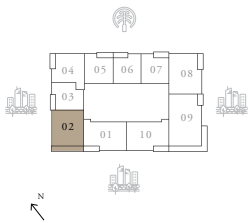
### 2 BEDROOM TYPE A

LEVELS 26-29

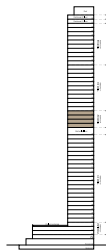
UNIT 02

SUITE AREA	1052.93 SQ.FT.	97.82 SQ.M.
BALCONY AREA	170.93 SQ.FT.	15.88 SQ.M.
TOTAL AREA	1223.86 SQ.FT.	113.70 SQ.M.

KEY PLAN



KEY SECTION



TYPICAL LEVEL

FLOOR PLAN 1. All dimensions are in imperial and metric, and measured from finish to finish excluding construction tolerances. 2. All materials, dimensions, and drawings are approximate only. 3. Information is subject to change without notice, at developer's absolute discretion. 4. Actual area may vary from the stated area. 5. Drawings not to scale. 6. All images used are for illustrative purposes only and do not represent the actual size, features, specifications, fittings, and furnishings. 7. The developer reserves the right to make revisions / alterations, at it's absolute discretion, without any liability whatsoever.

EMAAR



# FLOOR PLAN



MARINA  
SHORES  
AT DUBAI MARINA  
EMAAR

## MARINA SHORES

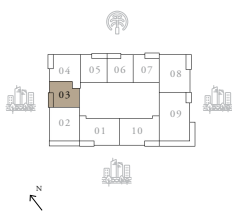
AT DUBAI MARINA

### 1 BEDROOM TYPE D

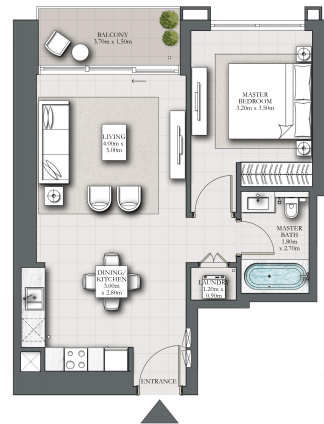
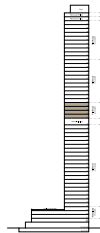
LEVELS 26-29 UNIT 03

SUITE AREA	670.16 SQ.FT.	62.26 SQ.M.
BALCONY AREA	75.24 SQ.FT.	6.99 SQ.M.
TOTAL AREA	745.40 SQ.FT.	69.25 SQ.M.

KEY PLAN



KEY SECTION



TYPICAL LEVEL

FLOOR PLAN 1. All dimensions are in imperial and metric, and measured from finish to finish excluding construction tolerances. 2. All materials, dimensions, and drawings are approximate only. 3. Information is subject to change without notice, at developer's absolute discretion. 4. Actual area may vary from the stated area. 5. Drawings not to scale. 6. All images used are for illustrative purposes only and do not represent the actual size, features, specifications, fittings, and furnishings. 7. The developer reserves the right to make revisions / alterations, at it's absolute discretion, without any liability whatsoever.

EMAAR



# FLOOR PLAN



EXCLUSIVELINKS  
Real Estate Brokers

MARINA  
SHORES

AT DUBAI MARINA

EMAAR

## MARINA SHORES

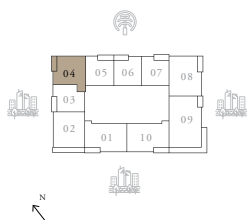
AT DUBAI MARINA

### 1 BEDROOM TYPE C

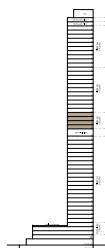
LEVELS 26-29 UNIT 04

SUITE AREA	796.85 SQ.FT.	74.03 SQ.M.
BALCONY AREA	78.36 SQ.FT.	7.28 SQ.M.
TOTAL AREA	875.21 SQ.FT.	81.31 SQ.M.

KEY PLAN



KEY SECTION



TYPICAL LEVEL

FLOOR PLAN 1. All dimensions are in imperial and metric, and measured from finish to finish excluding construction tolerances. 2. All materials, dimensions, and drawings are approximate only. 3. Information is subject to change without notice, at developer's absolute discretion. 4. Actual area may vary from the stated area. 5. Drawings not to scale. 6. All images used are for illustrative purposes only and do not represent the actual size, features, specifications, fittings, and furnishings. 7. The developer reserves the right to make revisions / alterations, at it's absolute discretion, without any liability whatsoever.

EMAAR



# FLOOR PLAN



MARINA  
SHORES  
AT DUBAI MARINA  
EMAAR

## MARINA SHORES

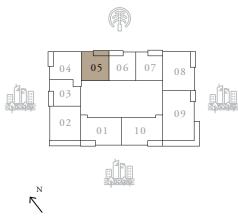
AT DUBAI MARINA

### 1 BEDROOM TYPE B

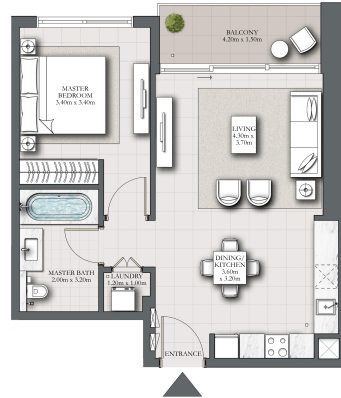
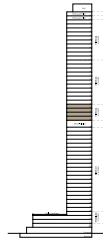
LEVELS 26-29 UNIT 05

SUITE AREA	693.20 SQ.FT.	64.40 SQ.M.
BALCONY AREA	82.13 SQ.FT.	7.63 SQ.M.
TOTAL AREA	775.32 SQ.FT.	72.03 SQ.M.

KEY PLAN



KEY SECTION



TYPICAL LEVEL

FLOOR PLAN 1. All dimensions are in imperial and metric, and measured from finish to finish excluding construction tolerances. 2. All materials, dimensions, and drawings are approximate only. 3. Information is subject to change without notice, at developer's absolute discretion. 4. Actual area may vary from the stated area. 5. Drawings not to scale. 6. All images used are for illustrative purposes only and do not represent the actual size, features, specifications, fittings, and furnishings. 7. The developer reserves the right to make revisions / alterations, at its absolute discretion, without any liability whatsoever.

EMAAR



# FLOOR PLAN



EXCLUSIVELINKS  
Real Estate Brokers

MARINA  
SHORES

AT DUBAI MARINA

EMAAR

## MARINA SHORES

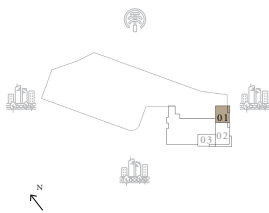
AT DUBAI MARINA

### 2 BEDROOM TYPE C

PODIUM LEVEL 01-02 UNIT 01

SUITE AREA	1107.28 SQ.FT.	102.87 SQ.M.
BALCONY AREA	82.77 SQ.FT.	7.69 SQ.M.
TOTAL AREA	1190.06 SQ.FT.	110.56 SQ.M.

KEY PLAN



KEY SECTION



TYPICAL LEVEL

FLOOR PLAN 1. All dimensions are in imperial and metric, and measured from finish to finish excluding construction tolerances. 2. All materials, dimensions, and drawings are approximate only. 3. Information is subject to change without notice, at developer's absolute discretion. 4. Actual area may vary from the stated area. 5. Drawings not to scale. 6. All images used are for illustrative purposes only and do not represent the actual size, features, specifications, fittings, and furnishings. 7. The developer reserves the right to make revisions / alterations, at it's absolute discretion, without any liability whatsoever.

EMAAR



# FLOOR PLAN



EXCLUSIVELINKS  
Real Estate Brokers

MARINA  
SHORES

AT DUBAI MARINA

EMAAR

## MARINA SHORES

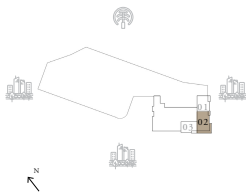
AT DUBAI MARINA

### 3 BEDROOM TYPE A

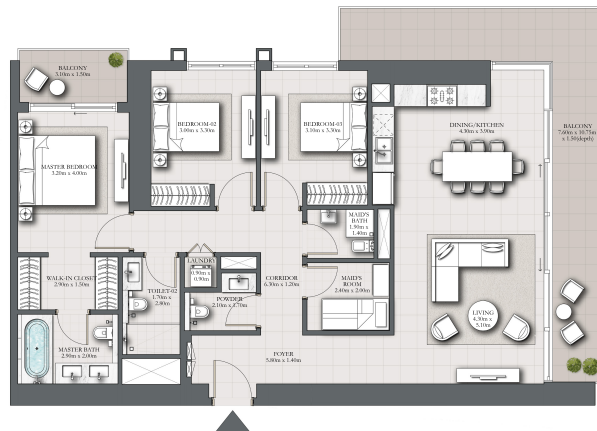
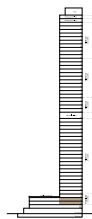
PODIUM LEVEL 01-02 UNIT 02

SUITE AREA	1475.95 SQ.FT.	137.12 SQ.M.
BALCONY AREA	372.32 SQ.FT.	34.59 SQ.M.
TOTAL AREA	1848.27 SQ.FT.	171.71 SQ.M.

KEY PLAN



KEY SECTION



TYPICAL LEVEL

FLOOR PLAN 1. All dimensions are in imperial and metric, and measured from finish to finish excluding construction tolerances. 2. All materials, dimensions, and drawings are approximate only. 3. Information is subject to change without notice, at developer's absolute discretion. 4. Actual area may vary from the stated area. 5. Drawings not to scale. 6. All images used are for illustrative purposes only and do not represent the actual size, features, specifications, fittings, and furnishings. 7. The developer reserves the right to make revisions / alterations, at it's absolute discretion, without any liability whatsoever.

EMAAR



# FLOOR PLAN



MARINA  
SHORES  
AT DUBAI MARINA  
EMAAR

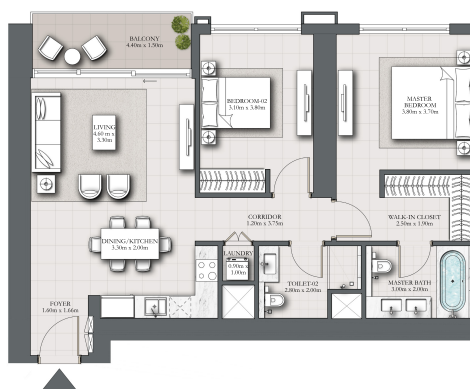
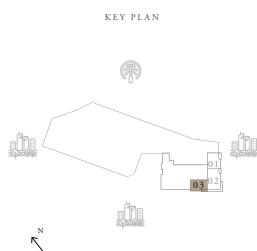
## MARINA SHORES

AT DUBAI MARINA

### 2 BEDROOM TYPE B

PODIUM LEVEL 01-02 UNIT 03

SUITE AREA	1061.86 SQ.FT.	98.65 SQ.M.
BALCONY AREA	85.68 SQ.FT.	7.96 SQ.M.
TOTAL AREA	1147.54 SQ.FT.	106.61 SQ.M.



TYPICAL LEVEL

FLOOR PLAN 1. All dimensions are in imperial and metric, and measured from finish to finish excluding construction tolerances. 2. All materials, dimensions, and drawings are approximate only. 3. Information is subject to change without notice, at developer's absolute discretion. 4. Actual area may vary from the stated area. 5. Drawings not to scale. 6. All images used are for illustrative purposes only and do not represent the actual size, features, specifications, fittings, and furnishings. 7. The developer reserves the right to make revisions / alterations, at its absolute discretion, without any liability whatsoever.

EMAAR



# FLOOR PLAN



MARINA  
SHORES  
AT DUBAI MARINA  
EMAAR

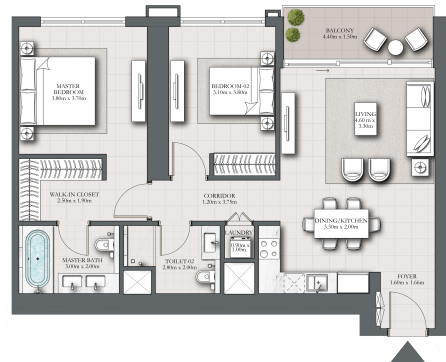
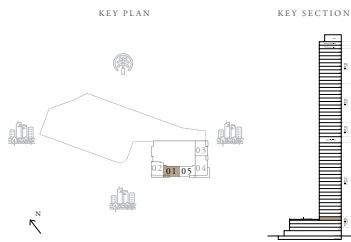
## MARINA SHORES

AT DUBAI MARINA

### 2 BEDROOM TYPE B2

PODIUM LEVEL 03 UNIT 01

SUITE AREA	1061.86 SQ.FT.	98.65 SQ.M.
BALCONY AREA	85.68 SQ.FT.	7.96 SQ.M.
TOTAL AREA	1147.54 SQ.FT.	106.61 SQ.M.



TYPICAL LEVEL

FLOOR PLAN 1. All dimensions are in imperial and metric, and measured from finish to finish excluding construction tolerances. 2. All materials, dimensions, and drawings are approximate only. 3. Information is subject to change without notice, at developer's absolute discretion. 4. Actual area may vary from the stated area. 5. Drawings not to scale. 6. All images used are for illustrative purposes only and do not represent the actual size, features, specifications, fittings, and furnishings. 7. The developer reserves the right to make revisions / alterations, at it's absolute discretion, without any liability whatsoever.

EMAAR