

Residential: Sold

NORTHAMPTON SQUARE LONDON EC1V

SPACE STATION

NORTHAMPTON SQUARE EC1V

6 BEDROOM TOWNHOUSE

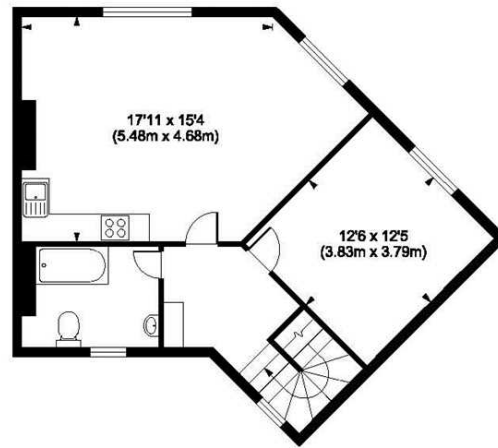
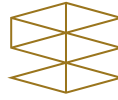
Taking its name from the local landowner, the Marquess of Northampton - The square has historically housed clockmakers, jewellers, silversmiths and other fine crafts. The Square was laid out in 1803-4 and building work on the houses began in 1805

Steeped in history this stunning Grade II listed Georgian house spanning over 3300 sq ft (approx) the house was

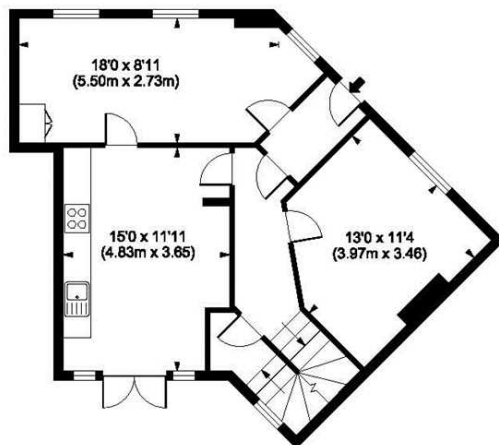
built by Samuel Danford and Thomas Woolcott. The unique wedge-shaped building was built as the Ashby Castle a public house and remained a public house until c. 1882 and then used as a dairy from c. 1882 up to c. 1960.

Our clients have lovingly and meticulously refurbished this beautiful property, retaining all the splendid Georgian character, mixed with tasteful decor on every floor including original

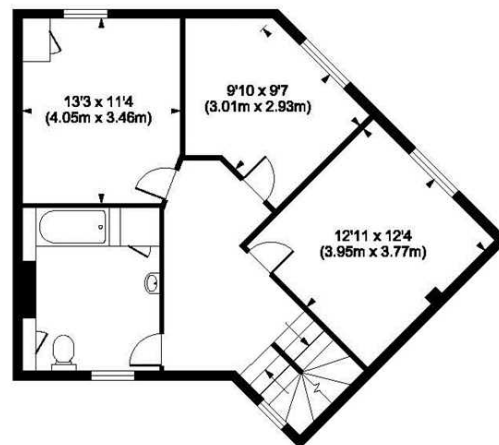




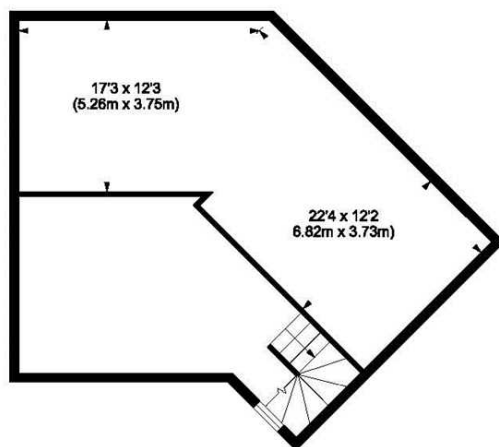
THIRD FLOOR



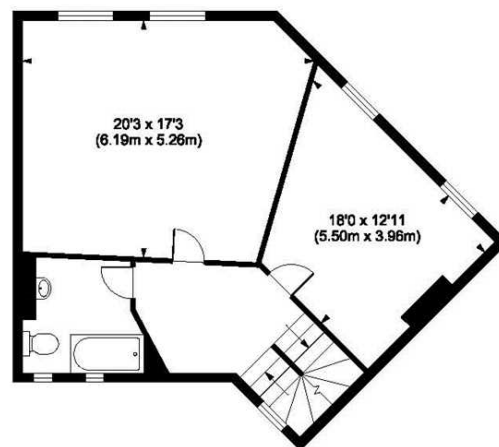
GROUND FLOOR



SECOND FLOOR



LOWER GROUND FLOOR



FIRST FLOOR

Northampton Square, London, EC1
Gross internal area 3476 sq ft/323 sq metres

SPACE STATION



wide stripped floorboards, working shutters and gorgeous cast iron open fireplaces.

The existing layout consists of a lower ground floor with bedroom, reception & bathroom with storage vaults and would make as a great space for teenagers, nanny, gym, cinema room or just great guest accommodation.

On entering the house you immediately get a sense of style and space. The pristine diamond chequerboard black & white tiled floor throughout the ground floor is truly spectacular. The glass walled portions separating the kitchen and study allows light to flood all around the space and the kitchen features the latest equipment, including built in fridge & freezer drawers all hidden behind a bespoke reclaimed façade, which is both stylish and quite ingenious.

The original winding Georgian staircase elegantly leads you to the fabulous first floor reception with wide oak stripped floors, four huge sashed windows with Juliette style balconies. The room is bright with cornice ceiling roses and great walls for art. There is also a shower & toilet on the hall landing.

Continuing to the second floor we find two bedrooms including an impressive master bedroom with en-suite bathroom featuring mosaic tiled floor, built in storage and striking red glazed tile fireplace.

The third floor plans suggest two further bedrooms and a shower room, although this stunning floor with its vaulted ceiling could be arranged as a games room, nursery or simply another reception.

There is a wonderful walled secluded south facing private patio garden, which is screaming to be turned into something really special.

This remarkable and sympathetic home deserves to be loved and would be enjoyed by both a city professional couple or a family.

Located on the North East corner of Northampton Square & Ashby Street, the property is conveniently positioned for access to the many and varied amenities of both Clerkenwell and Angel. The nearest Underground station can be found at Angel (0.4 miles - Northern line). Farringdon station (0.7 miles) with its numerous Underground and rail services is also easily accessible and will become the largest interchange station on the Crossrail network when it opens in 2018. Please note all distances are approximate.



HIGH CEILINGS



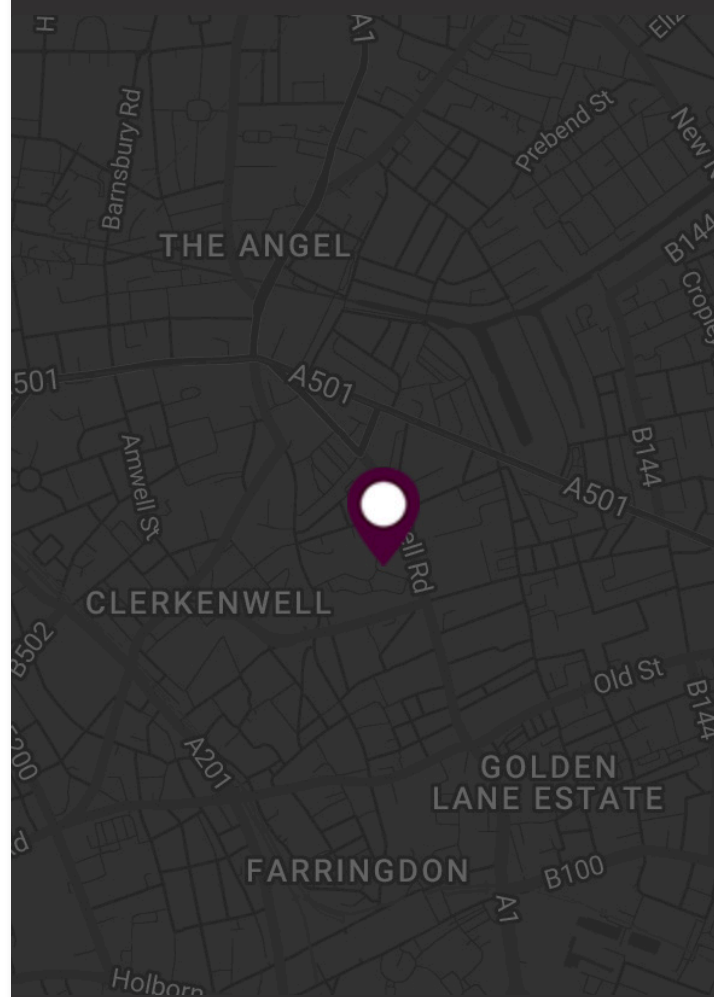
SECLUDED WALLED GARDEN



HIGH SPEC THROUGHOUT



LISTED GRADE II GEORGIAN HOUSE



SPACE STATION

T +44 (0) 20 7613 6262
A 92 Leonard Street, London, EC2A 4RH
E space@thespacestation.co.uk