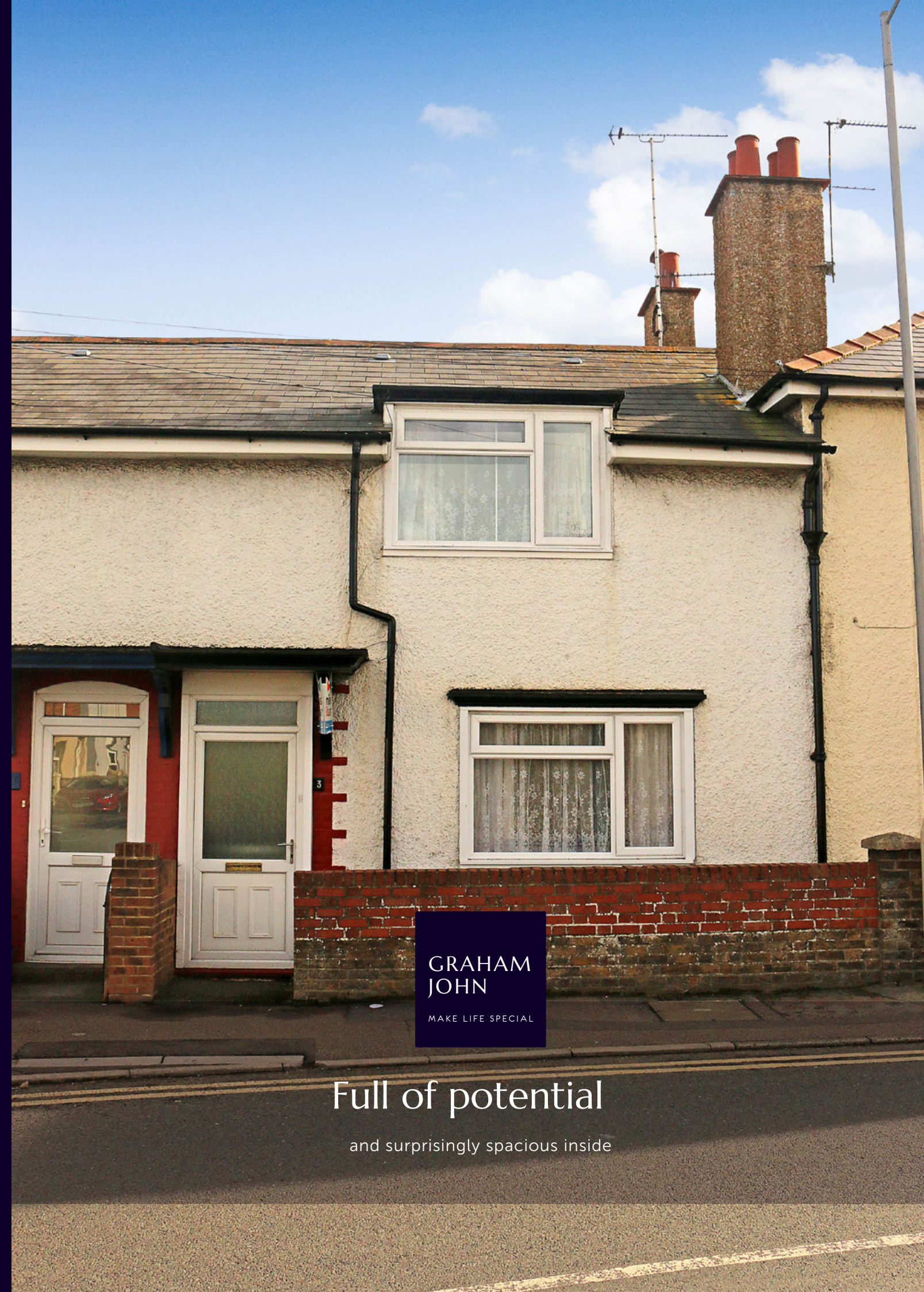


T: 01303 474101  
M: 07875 001499  
E: [mattride@grahamjohn.com](mailto:mattride@grahamjohn.com)

[www.grahamjohn.com](http://www.grahamjohn.com)



GRAHAM  
JOHN  
MAKE LIFE SPECIAL

Full of potential

and surprisingly spacious inside



# A great outside space

Complements the accommodation

## The Details

Living Room  
Dining Room  
Kitchen  
Shower Room  
Separate WC  
3 Bedrooms  
Garden  
Gas Central Heating  
Double Glazing

First impressions can be deceptive and this is somewhere that surprises in many ways when you look carefully.

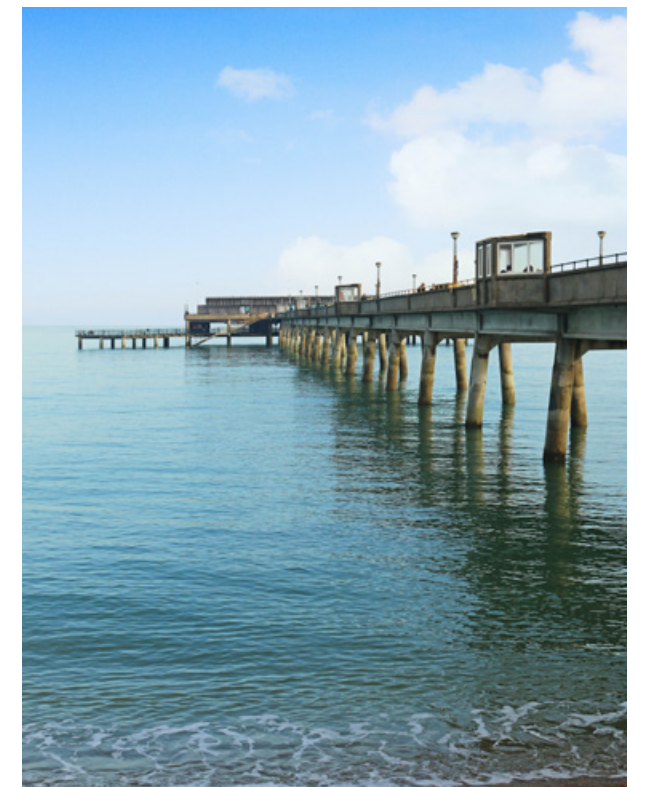
Everyone will see something different in this home. Those with a discerning eye will look at the size of the rooms and realise what a benefit they provide. You will get a sense straight away of why it is special and you'll begin to get excited about the opportunity it offers. Thoughtful planning, inspiration and some time spent at the design table and you will begin to be drawn onto a magical journey. Designing a home, even just from the thought of planning decoration can be so much fun and incredibly rewarding. This home has a traditional kitchen; it steps back a few decades and there is an endearing quality about it and is a space that will challenge you. Are you brave enough to keep it traditional, how will that work or will you completely revamp it and do something ultra-modern, perhaps even go for a classic cottage kitchen.

This is somewhere that will be surprisingly understanding and accommodating of any style choice you make. There's a wealth of potential here and with so many ways to alter and improve the accommodation, some of you may go further than we imagine.

One thing is certain, this house will make a lovely home, it will give you space inside to enjoy life and there is a great garden to the rear, around 56' deep (17m), that enjoys a sunny aspect and will give you



*The garden will provide lots of opportunity to enjoy yourself outside*



*The sea is never far away and Deal has many ways to make the most of enjoying it.*



lots of outside room to have fun, barbecues, play with the kids and perhaps even grow some fruit an veg.

Deal is a town that surprises in so many ways. Wander into the centre and you'll find yourself exploring a series of narrow streets with delightful period homes wrapping around you. Wander onto the sea front and you move from watching rod and line fishermen on the pier, past smiling couples sat drinking and eating at tables outside pubs and cafes to standing amongst crab pots and buying freshly caught fish straight from the fishing boats.

There are numerous plaques around the town citing famous residents and of course there are Walmer and Deal Castles.

Part of the famous Cinque Ports, Deal does have an intriguing history and is bounded by lovely countryside. Visit nearby Sandwich, explore further to Ramsgate and Broadstairs and inland to delightful Canterbury. Follow the coast to Dover for cross channel ferries and to Folkestone for the Eurostar service.

How will you embrace this home, come along and find out, we're looking forward to hearing your thoughts and plans.

This home is available for viewing by appointment through Graham John Estate Agents.

**01303 474101**

Email: [property@grahamjohn.com](mailto:property@grahamjohn.com)

[www.grahamjohn.com](http://www.grahamjohn.com)



The rooms are lovely sizes here

*Everyone loves a fireplace*







*The shower room and wc are rooms you'll work with and here there are some intriguing choices to make.*

There are a number of exciting permutations for the accommodation here. Everyone will feel differently about the path they will take to make this the home for them. The delight is in imagining, designing and realising something unique to you, to put your mark on a home and bring it to life.



*What will you dream up in the way of a perfect kitchen*

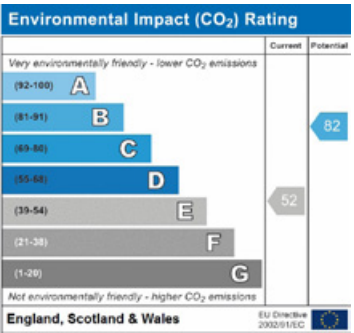
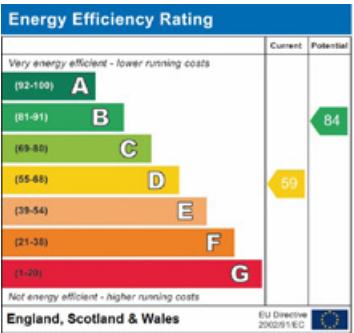
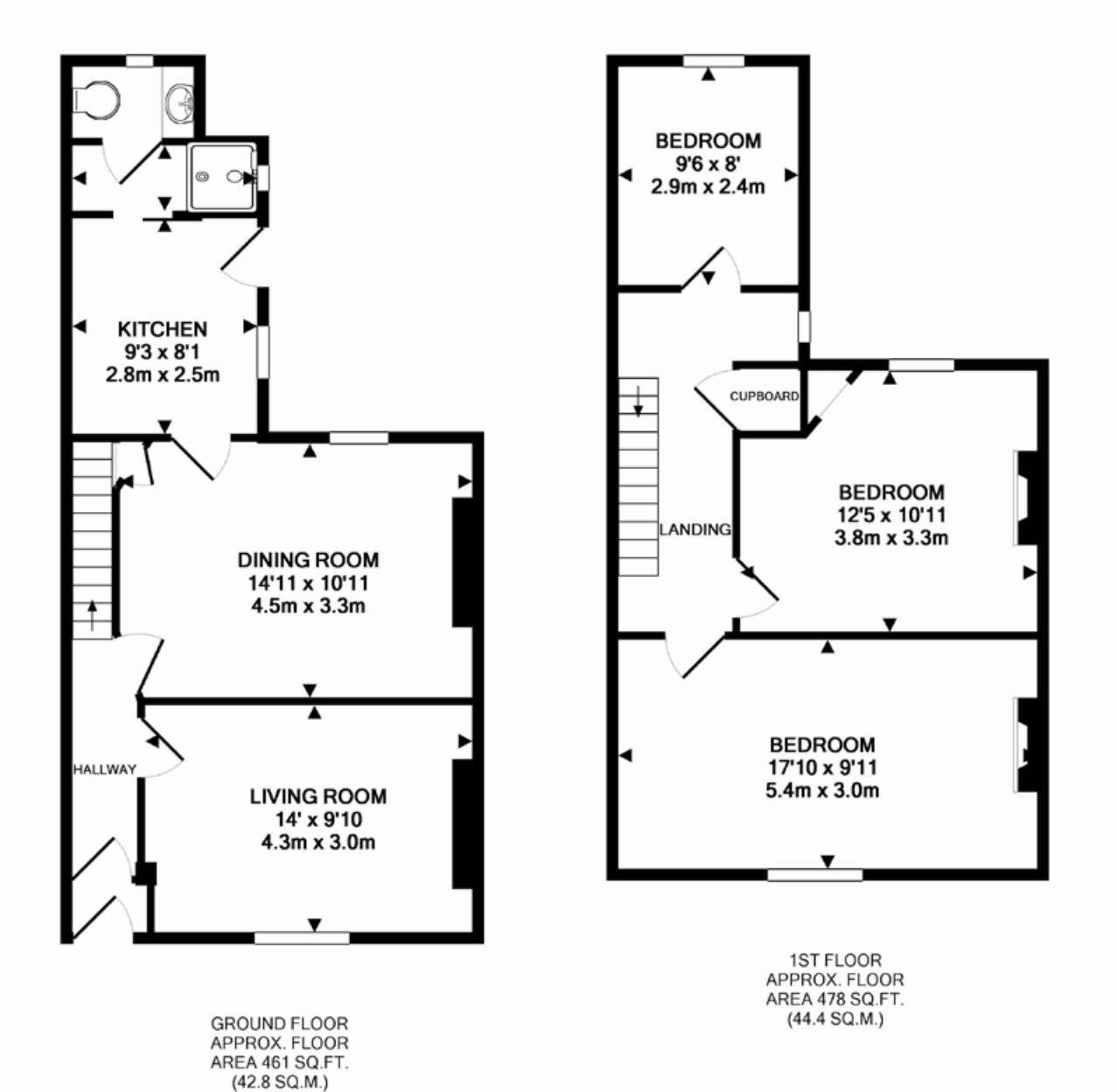




Fabulous space in the master



The middle bedroom



Important notice. Graham John and their clients give notice that 1) They are not authorised to make or give any representations or warranties in relation to the property either here or elsewhere, either on their own behalf or on behalf of their client or otherwise. They assume no responsibility for any statement that may be made in these particulars. These particulars do not form part of any offer or contract and must not be relied upon as statements or representations of fact. 2) Any areas, measurements or distances are approximate. The text, photographs and plans are for guidance only and are not necessarily comprehensive. It should not be assumed that the property has all necessary planning, building regulation or other consents and Graham John have not tested and services, equipment or facilities. Purchasers must satisfy themselves by inspection or otherwise.





Plenty of opportunity to design and some fine plants to get you started



*Deal has a wealth of lovely shops and cafes. There is a bohemian feel and it is a great place to escape to, a town with a welcoming heart highlighted by it's motto 'adjuvate advenas' befriend the stranger.*

Deal has a long and colourful history and you'll enjoy getting to know it. Part of the famed Cinque Ports it's tale is indelibly intertwined with the sea. The pier, the third to exist here is a popular landmark. For many the real charm is in amongst the georgian homes that

make up much of the town centre, just over a mile away from this home. As you amble through the streets you'll see numerous plaques outlining famous names who have frequented Deal modern day and historical. ■

*A greenhouse and vegetable bed can be instant inspiration in the garden*