



GRAHAM
JOHN
MAKE LIFE SPECIAL

Peace, quiet and charm

Tucked away in a small village is a home full of surprises

T: 01303 474101
M: 07875 001499
E: mattride@grahamjohn.co.uk

www.grahamjohn.co.uk

So unusual, so special

A sense of calm
surrounds you as you
explore this home.

The Details

Entrance Reception
Sitting Room
Dining Room
Kitchen
Breakfast Room
Bathroom
Study/Bedroom
Bedroom 2
Bedroom 3
Separate Landing
Master Bedroom
Shower Room
Garage and Off Road Parking

It's lovely to find a home that has charm and a very personal character. With 16th Century origins this Listed cottage will intrigue you from the moment you see it.

You can be forgiven for wondering whether you are looking at one home or two when you pull up outside this intriguing cottage. Unusual it certainly is and that is the charm that attracted the owner and made this a wonderful home for thirty years.

It is a property that really doesn't conform, it has a personality that entices you with the lure of character, beams and fireplaces then startles you with its quirky layout and amidst all that provides, as the owner puts it, that feeling that 'it is cuddling you', certainly that was the impression it gave her when she first viewed and instantly smitten she had to have it. The cottage somehow dares you to like it yet rewards admirably. This is a home that is about much more than accommodation, it's about a charming garden meandering away alongside the church, the weathered stone of the tower is there in the background providing a rich accompaniment to the scenery.

You get a sense of peace that only comes with being somewhere like this, hamlet or village and Stansted could almost be either, is certainly a lovely community of people and one that seems removed from the daily hustle and bustle yet has Sevenoaks just down the road and the motorway network not too far off. This is a great place to escape to, somewhere from which to explore glorious Kent countryside. London isn't far nor, as we said, is the glamour of Sevenoaks.



Areas of garden open up as you explore.



There's a great village pub on your doorstep, part of a welcoming community.

This is a home that when you visit you'll find you keep discovering things, that second staircase, a different view, a turn in the garden and all around you an air of peace and tranquility. It isn't your typical family home and it's all the more special for it! Waking up in the bedroom, pulling the curtains and looking through those patio doors at the garden is something you'll never tire of.

Stansted, not the one with the airport, is tucked away and easy to miss if you're not looking for it, part of the attraction. The local pub is proud to offer a classical pub experience and has been recently refurbished and is somewhere to enjoy lunch by a log fire,

This cottage will ask you to be open minded, creative in your thinking, it will challenge something in you and if you rise to the task it will provide a home that will make you happy for a long time.

This is the sort of home that inspires and offers such potential. Everyone will find something different that captures their imagination here. Will you change anything? It'll be interesting to find out what you think.

Once you've moved in and you are deciding, time will while away and you'll enjoy some very special moments in a home that will serve you proudly for years.

This home is available for viewing by appointment through Graham John Estate Agents.

01303 474101

Email: property@grahamjohn.com

www.grahamjohn.com

Something about a beamed
interior entices and charms

*A fireplace just seems to
make somewhere home.*





A great office for the homemaker or fourth bedroom perhaps.



Such a great room to breakfast in.

Concealed appliances mean the kitchen is bigger than it feels and everything feels close at hand.

The cottage is full of little nooks and crannies, unusual features to explore, it all adds to the sense that you are somewhere special.

From the kitchen you can serve breakfast in a secluded courtyard, in the breakfast room and take dinner straight to the table.



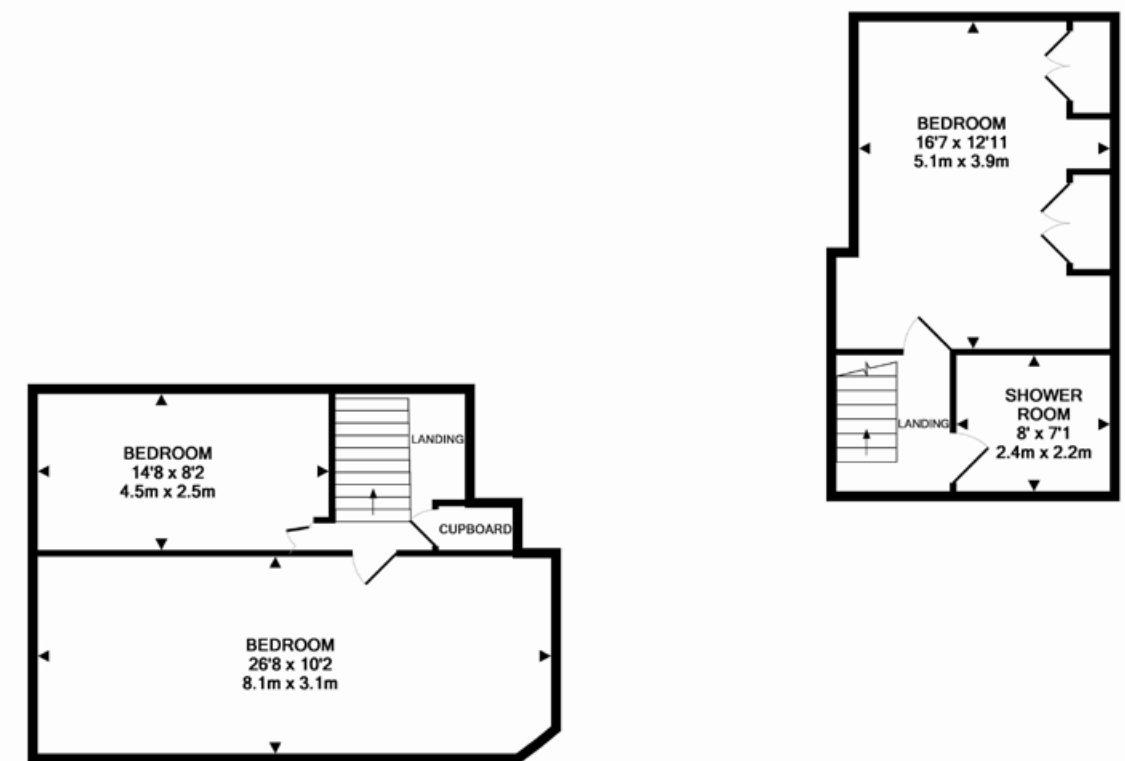
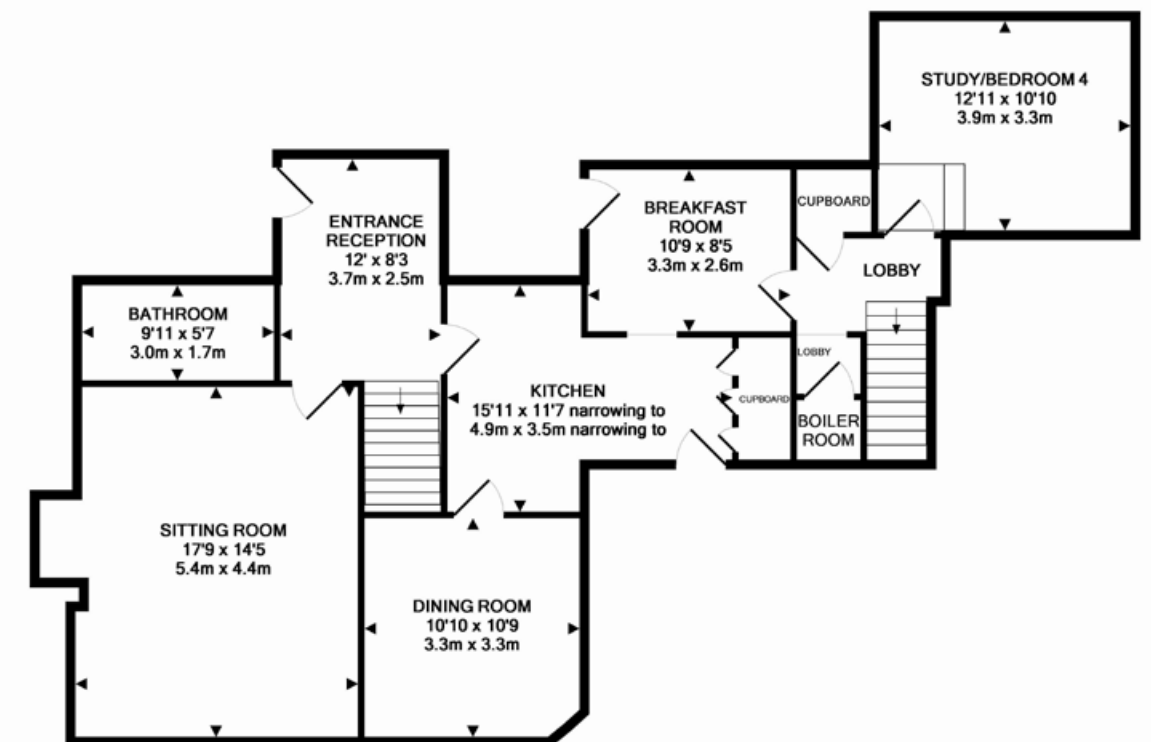
*Such an amazing room to wake up in
and throw open the curtains.*



Another striking bedroom.



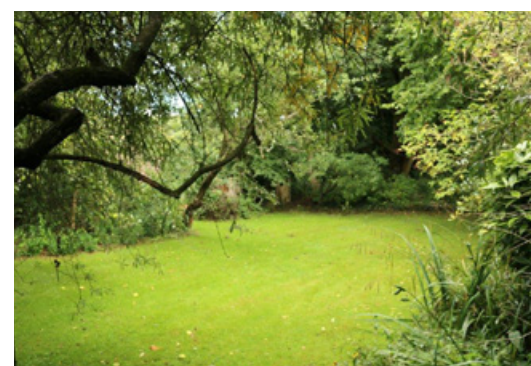
What a fabulous room, who wouldn't love the space?



Important notice. Graham John and their clients give notice that 1) They are not authorised to make or give any representations or warranties in relation to the property either here or elsewhere, either on their own behalf or on behalf of their client or otherwise. They assume no responsibility for any statement that may be made in these particulars. These particulars do not form part of any offer or contract and must not be relied upon as statements or representations of fact. 2) Any areas, measurements or distances are approximate. The text, photographs and plans are for guidance only and are not necessarily comprehensive. It should not be assumed that the property has all necessary planning, building regulation or other consents and Graham John have not tested and services, equipment or facilities. Purchasers must satisfy themselves by inspection or otherwise.



The garden meanders and has little spots to enjoy at different times of the day.



When you first view this home you seem to keep discovering new facets

This is a home that is very much about the outdoors too. The garden seems to ramble and draw you in as if on a little adventure. Different views reveal themselves as you look back until you seem to lose the house altogether. You're never far away but it

carries that magic feeling that adds to the sense of escape, of leaving the hustle and bustle behind. The garage and driveway provide plenty of parking for when friends and family visit and they're sure to want to just to experience this lovely setting.

The church is a stunning backdrop to the garden view and instantly seems to put you at ease.