



GRAHAM
JOHN
MAKE LIFE SPECIAL

A stunning home

and equally impressive detached annexe

T: +44 (0)1303 474101
M: +44 (0)7875 001499
E: mattyde@grahamjohn.com



www.grahamjohn.com

Fun and family

... an amazing blend!

The Details

Main house
Living room
Reading/dining room
Kitchen
Bathroom
Shower room
4 bedrooms
Off road parking
Garden
Loggia
WC
Annexe
Living room/kitchen
Bedroom
Shower room
Private Patio

We love this combination of a fabulous home and a super annexe. It is a real treat to find such a well designed home.

Balance, design, proportion, function, they are all things that openly and overtly make a home work, the right combination makes it truly special and here is somewhere that seems to do so much and get it all spot on.

This is a house that goes beyond the norm in fact because it provides two super homes and the opportunity to maintain a degree of separation that is often sought and rarely found.

It may be that you do want to live life as two families side by side, perhaps you have people who will visit regularly and you want them to have their own privacy or you may wish to make the most of a world where Air B'n'B has changed vacationing dramatically. You may just want the most amazing playroom to indulge your hobby, whatever the desire, here is somewhere that provides superb space in the main home and a fabulous annexe to match. You get the benefit here without compromising upon the main accommodation, in fact the space here will please everyone.

The main home, a semi-detached cottage that has been thoughtfully extended now balances space with charm, practical living with character and as you walk through there is a sense of balance that makes the thought of life here so enticing.

The main living room feels wonderful with the French doors thrown open onto the patio, beside it a cosier parlour, perfect for a reading room. You can choose where to set your dining table although, as often as the weather allows, you are likely to be sat outside. The top floor has two wonderful rooms, perfect as a suite and one that will appeal to everyone. The middle floor has two bedrooms, a shower room and separate bathroom.

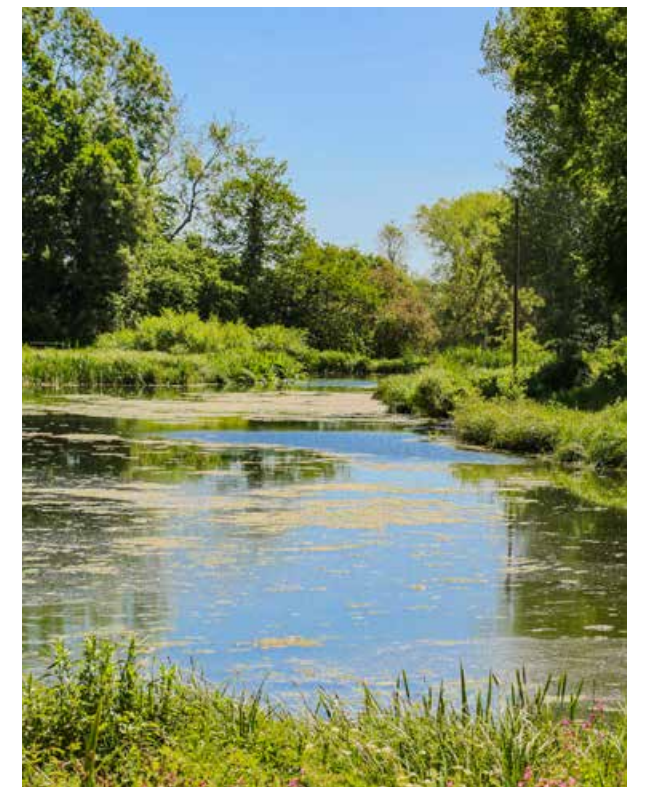
The annexe is a super feature with its own pathway leading to it, a broad patio to the rear and room inside that makes for a super independent home. There is parking aplenty.

In the main garden a loggia provides a fun entertainment space and there is storage and an outside loo.

This rural spot puts you within easy reach of Charing, Headcorn and wonderful Lenham, a delightful walk takes you there, a great destination if you enjoy a pastry, the bakery is a fabulous one. The pretty square



Space to enjoy



Sights to see nearby

a great spot to sit and have a coffee or enjoy a meal.

Balance, design, proportion, function, they are all things that openly and overtly make a home work, the right combination makes it truly special and here is somewhere that seems to do so much and get it all spot on.

This is a house that goes beyond the norm in fact because it provides two super homes and the opportunity to maintain a degree of separation that is often sought and rarely found.

It may be that you do want to live life as two families side by side, perhaps you have people who will visit regularly and you want them to have their own privacy or you may wish to make the most of a world where Air B'n'B has changed vacationing dramatically. You may just want the most amazing playroom to indulge your hobby, whatever the desire, here is somewhere that provides superb space in the main home and a fabulous annexe to match. You get the benefit here without compromising upon the main accommodation, in fact the space here will please everyone.

The main home, a semi-detached cottage that has been thoughtfully extended now balances space with charm, practical living with character and as you walk through there is a sense of balance that makes the thought of life here so enticing.

The main living room feels wonderful with the French doors thrown open onto the patio, beside it a cosier parlour, perfect for a reading room. You can choose where to set your dining table although, as often as the weather allows, you are likely to be sat outside. The top floor has two wonderful rooms, perfect as a suite and one that will appeal to everyone. The middle floor has two bedrooms, a shower room and separate bathroom.

The annexe is a super feature with its own pathway leading to it, a broad patio to the rear and room inside that makes for a super independent home. There is parking aplenty.

In the main garden a loggia provides a fun entertainment space and there is storage and an outside loo.

This rural spot puts you within easy reach of Charing, Headcorn and wonderful Lenham, a delightful walk takes you there, a great destination if you enjoy a pastry, the bakery is a fabulous one. The pretty square a great spot to sit and have a coffee or enjoy a meal.

There is so much on offer within and around this home.

This home is available for viewing by appointment through Graham John Estate Agents.

+44 (0)1303 474101

Email: property@grahamjohn.com

www.grahamjohn.com

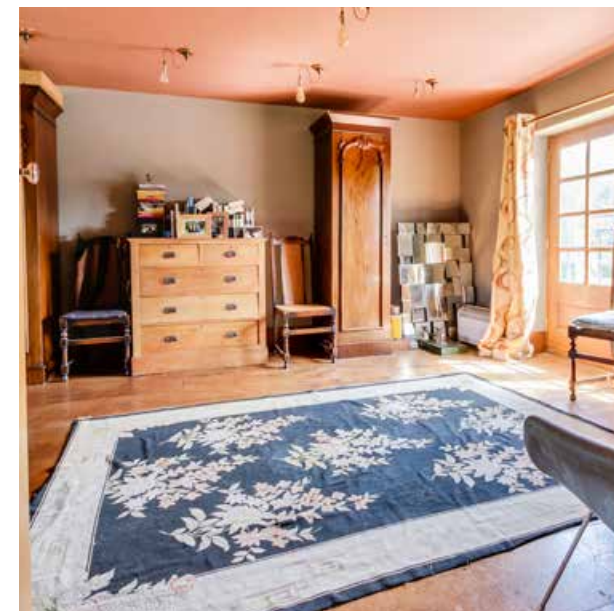




Sitting or dining room, you choose



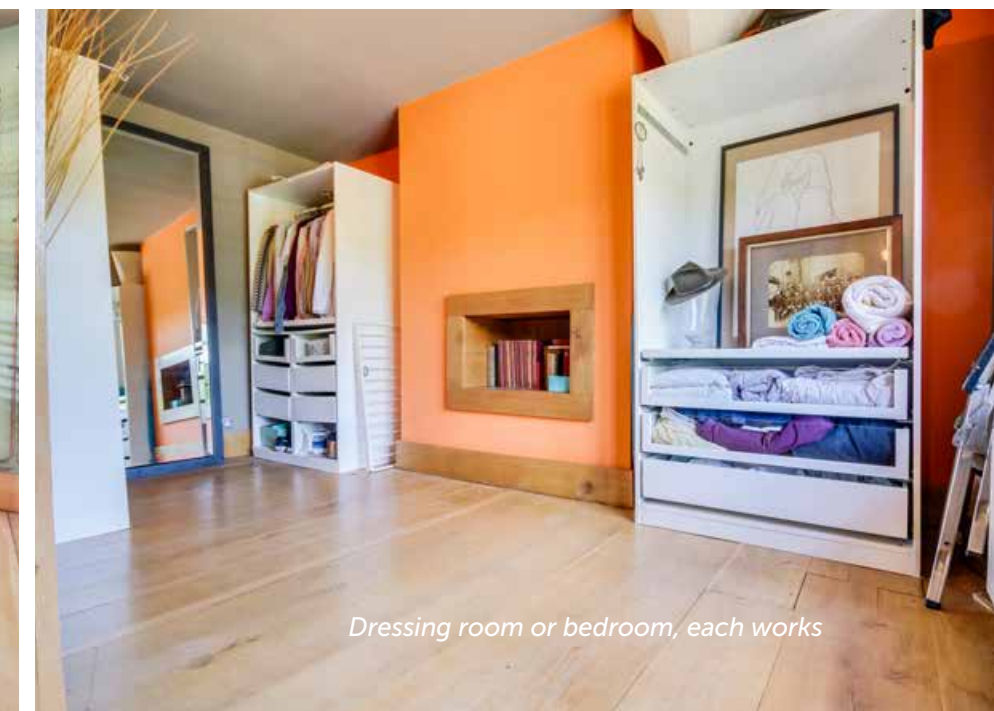
Perfect for entertaining



A wonderful master bedroom

Connecting the home and the garden so well, this is somewhere that makes enjoying life very easy.

Step out on to the patio and you find yourself drawn to a chair, to a table and to enjoy the sun that bathes you in its delightful glow. There is a lure to have fun here and to share good times. It is somewhere that can bring a family together and allow them to live in harmony and independence.



Dressing room or bedroom, each works



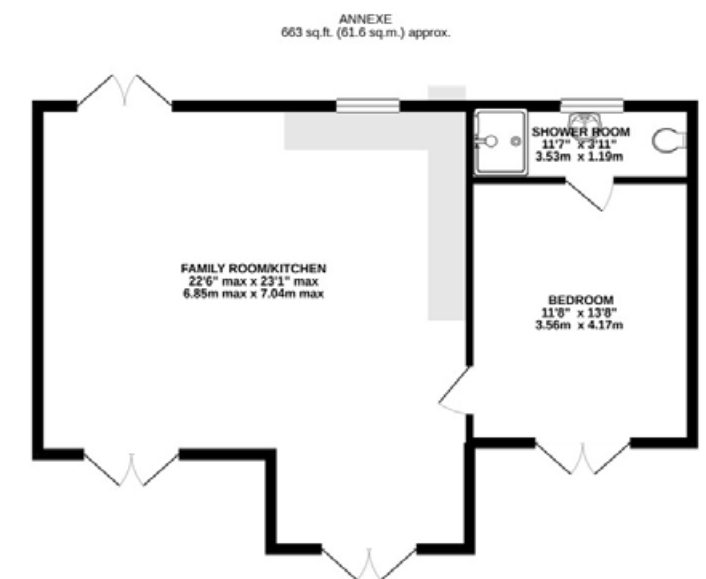
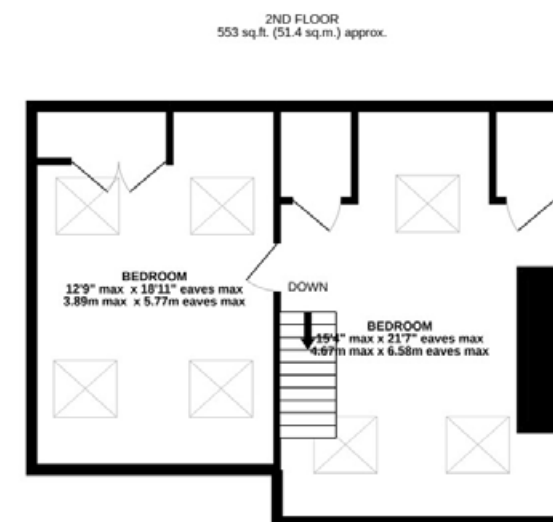
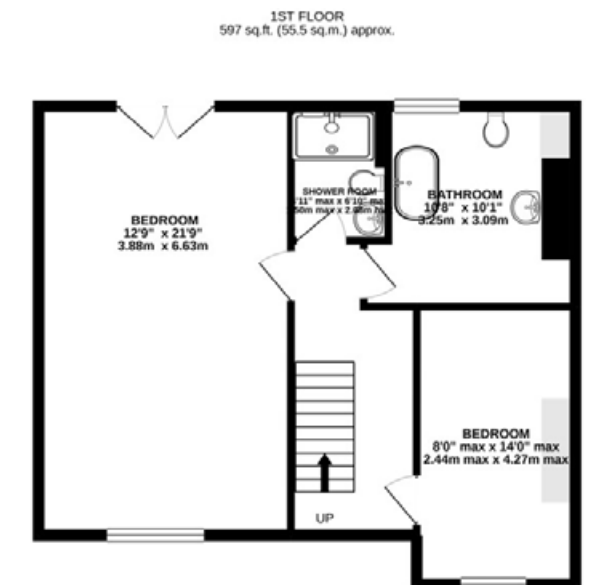
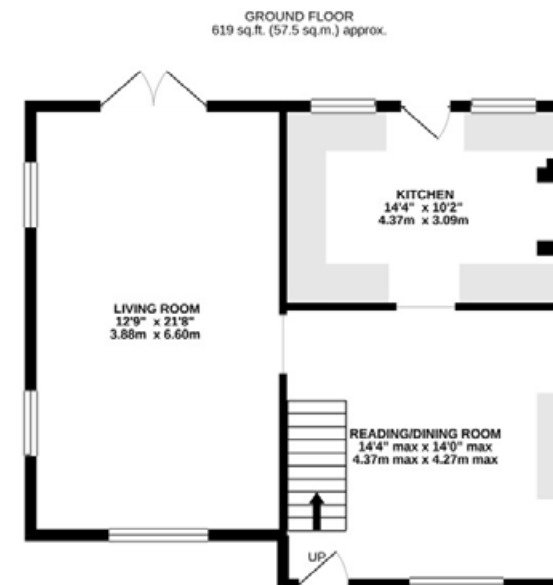
rooms with character



Makes a beautiful suite

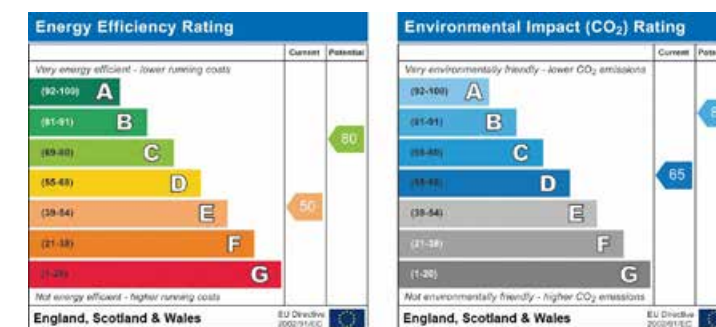


Light floods in



TOTAL FLOOR AREA : 2678 sq.ft. (248.8 sq.m.) approx.

Whilst every attempt has been made to ensure the accuracy of the floorplan contained here, measurements of doors, windows, rooms and any other items are approximate and no responsibility is taken for any error, omission or mis-statement. This plan is for illustrative purposes only and should be used as such by any prospective purchaser. The services, systems and appliances shown have not been tested and no guarantee as to their operability or efficiency can be given.
Made with Metropix ©2020



Important notice. Graham John and their clients give notice that 1) They are not authorised to make or give any representations or warranties in relation to the property either here or elsewhere, either on their own behalf or on behalf of their client or otherwise. They assume no responsibility for any statement that may be made in these particulars. These particulars do not form part of any offer or contract and must not be relied upon as statements or representations of fact. 2) Any areas, measurements or distances are approximate. The text, photographs and plans are for guidance only and are not necessarily comprehensive. It should not be assumed that the property has all necessary planning, building regulation or other consents and Graham John have not tested any services, equipment or facilities. Purchasers must satisfy themselves by inspection or otherwise.



So much opportunity



Such a wonderful living space



The annexe provides privacy



There's room for fun, we may have mentioned that before but it is inescapable here.



We love that the annexe is in proportion to the main home, both provide comfortable space and all within easy reach of charming and historic Lenham.



The village is a great destination for a walk and it is a simple drive away. ■

The annexe has its own garden to the rear, again enjoying the sun and allowing that sense of independence we talk about.