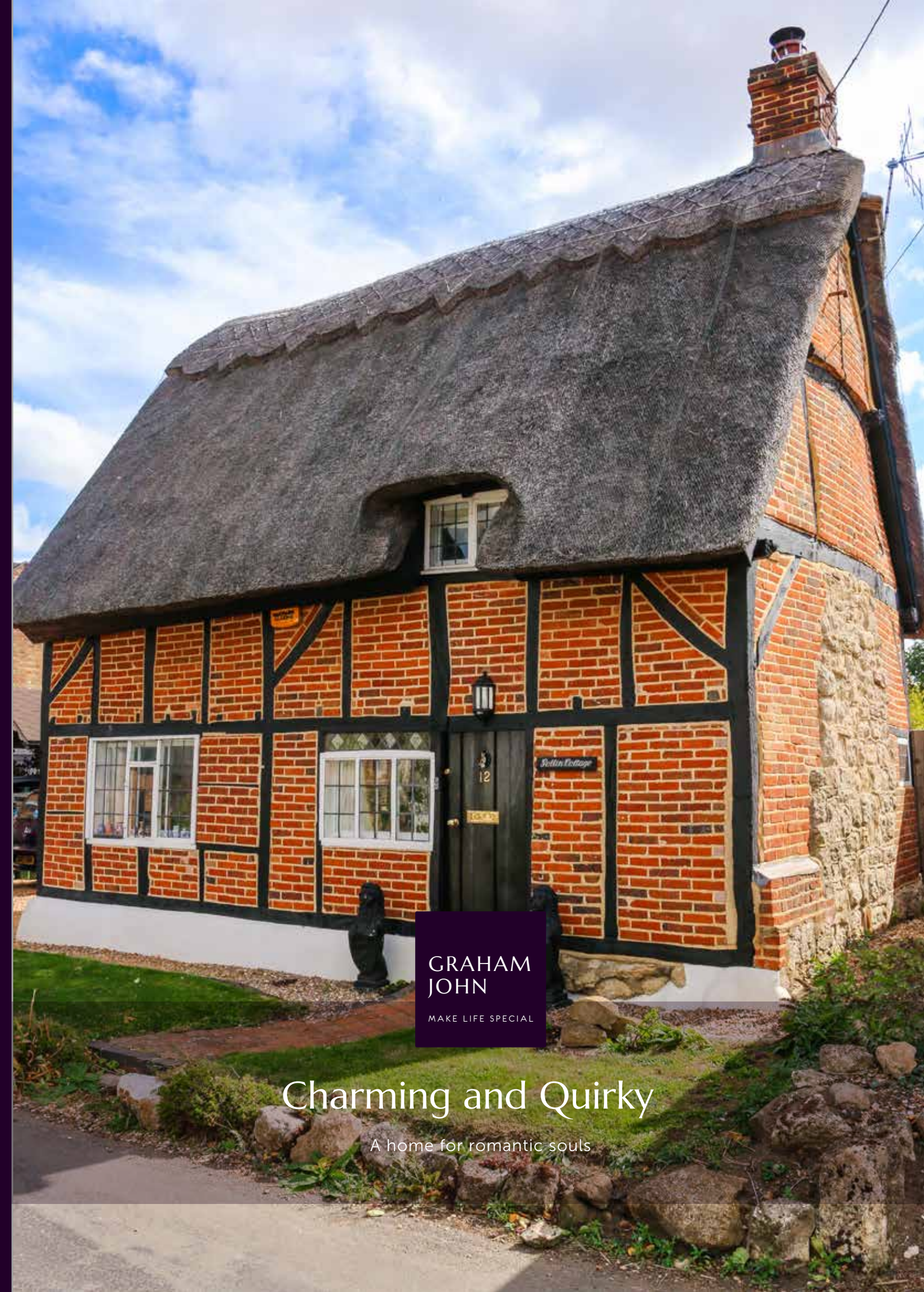


T: +44 (0)1303 474101
M: +44 (0)7875 001499
E: mattyde@grahamjohn.com



www.grahamjohn.com



GRAHAM
JOHN
MAKE LIFE SPECIAL

Charming and Quirky

A home for romantic souls

Charming at every turn

Dressing this home is a delight

The Details

Living room
Kitchen/dining room
Shower room
Bedroom
Study/bedroom 2
Grade II listed

There's a captivating charm about this thatched cottage, one that piques your curiosity and makes you fall for it.

This is a home that has that innate charm; who doesn't have a soft spot for the delightful lines of a traditional thatched cottage?

As you pause to admire, things will stand out, the lovely vivid colour of the bricks and clean lines of the pointing. Textures and patterns, shaped by craftsmen, the contrast of stonework amidst the brickwork, neat lines of timbering and the soft curve of thatch lapping around the leaded windows. The reason we love these wonderful places is, they seem to have grown organically from the landscape, almost natural and not man made, there's a softness that belies the stamina to have survived through so many centuries.

Believed to date from the sixteenth century, this Grade II listed home must have many tales to tell, the changes that have altered the local landscape through the intervening years, it would be wonderful to know them.

The village you find today is a quiet place, set amidst glorious countryside south of Winslow. This cottage seems perfectly at ease with other thatched homes opposite, a short walk from the picturesque church, you pass a pleasant mix of homes as you head for the village pub.

Step instead across the main road, past the Village Hall, a striking piece of architecture in its own right, you'll come to the village playground, one that must have one of the most spectacular outlooks of any in the country.



Delightful curves and lines



Always somewhere for special memories

Back within the cottage you find those wonderful things that captivate lovers of period homes. A super fireplace stands ready to serve on those cooler mornings and days, a wood burner eager to get you basking in the delightful warmth that only a real fire seems to provide.

There's a cosy feel throughout, a practical side too as you have a lovely space for a table, beside the kitchen. Stop and look closely here as, behind the hob, a previous owner has had tiles hand decorated to represent the cottage, a lovely sign of how much this home means to the people that have the chance to enjoy part of its history.

A suitably charming staircase winds up to the first floor, the first room could be a spare bedroom if needed, it makes for a fabulous study, office and or dressing room all rolled into one. Beyond the bedroom has that vintage charm you crave from a house this age.

There's a toilet on the first floor, it makes life simple, downstairs a lovely shower room, it once housed a bath, is again an incredibly practical room.

Outside, what we understand is the villages first recorded well sits to the rear of the garden. There's room for the logs to be stored, space for the barbecue and a pleasant shaped lawn. To the left-hand side of the house there's plenty of space for parking, behind it a garden shed. This is a home that has its own thread of romance, a unique and distinct character, it's somewhere that you'd love to have as a country escape and it may be that you do just that, it may be this is the reason to make your escape to the country properly and leave the hustle and bustle behind finally.

This home is available for viewing by appointment through Graham John Estate Agents.

+44 (0)1303 474101

Email: property@grahamjohn.com

www.grahamjohn.com





An easy flow to life



A charming touch



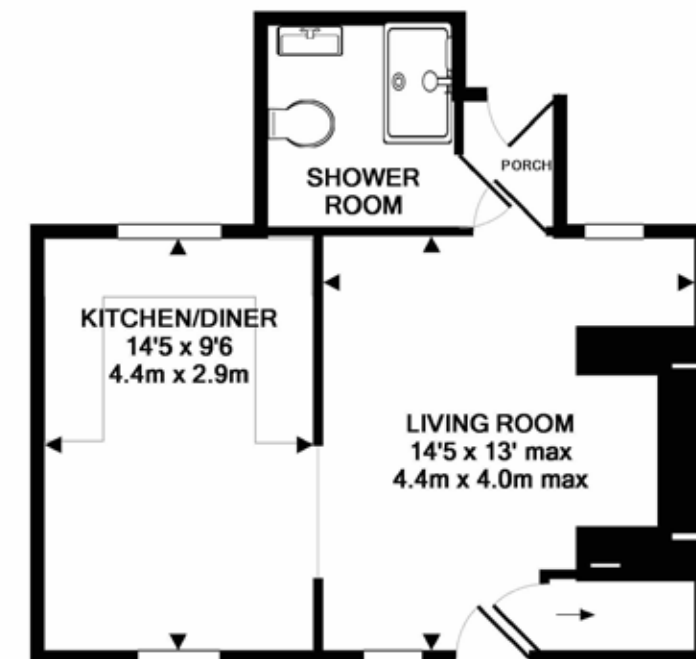
A lovely kitchen

The kitchen seems to suit the home beautifully, a previous owner has had a handmade tiled panel made showing the cottage, an unexpected touch. From here, life flows seamlessly through into the living room.

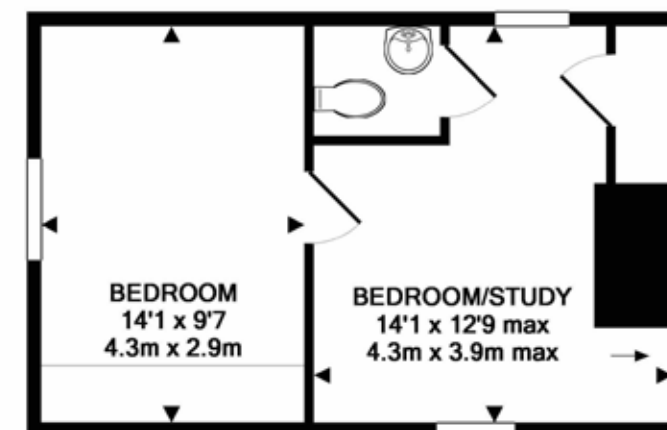
This home has served people through three centuries and it's amazing to think of that. Each generation will have made changes, lived life somewhat differently, had changing needs and it's fantastic how this period cottage seems to cope with modern needs so well.



An occasional guest room leads to the main bedroom



GROUND FLOOR
APPROX. FLOOR
AREA 370 SQ.FT.
(34.4 SQ.M.)



1ST FLOOR
APPROX. FLOOR
AREA 300 SQ.FT.
(27.9 SQ.M.)

TOTAL APPROX. FLOOR AREA 670 SQ.FT. (62.2 SQ.M.)

Whilst every attempt has been made to ensure the accuracy of the floor plan contained here, measurements of doors, windows, rooms and any other items are approximate and no responsibility is taken for any error, omission, or mis-statement. This plan is for illustrative purposes only and should be used as such by any prospective purchaser. The services, systems and appliances shown have not been tested and no guarantee as to their operability or efficiency can be given
Made with Metropix ©2018



The delightful bedroom

Important notice. Graham John and their clients give notice that 1) They are not authorised to make or give any representations or warranties in relation to the property either here or elsewhere, either on their own behalf or on behalf of their client or otherwise. They assume no responsibility for any statement that may be made in these particulars. These particulars do not form part of any offer or contract and must not be relied upon as statements or representations of fact. 2) Any areas, measurements or distances are approximate. The text, photographs and plans are for guidance only and are not necessarily comprehensive. It should not be assumed that the property has all necessary planning, building regulation or other consents and Graham John have not tested any services, equipment or facilities. Purchasers must satisfy themselves by inspection or otherwise.



A simple garden to enjoy with that 'wishing well'



There's space in the garden for a shed and an area is set aside for the log pile. Relax by the BBQ or sit quietly on the patio.

Granborough is a lovely village, there's plenty of delightful architecture to capture your eye, places to enjoy the scenery from and

the village pub to enjoy a drink and a meal. Winslow is nearby and Buckingham around seven miles away. ■

There's beautiful countryside to explore as you discover footpaths nearby.