

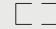
INIGO

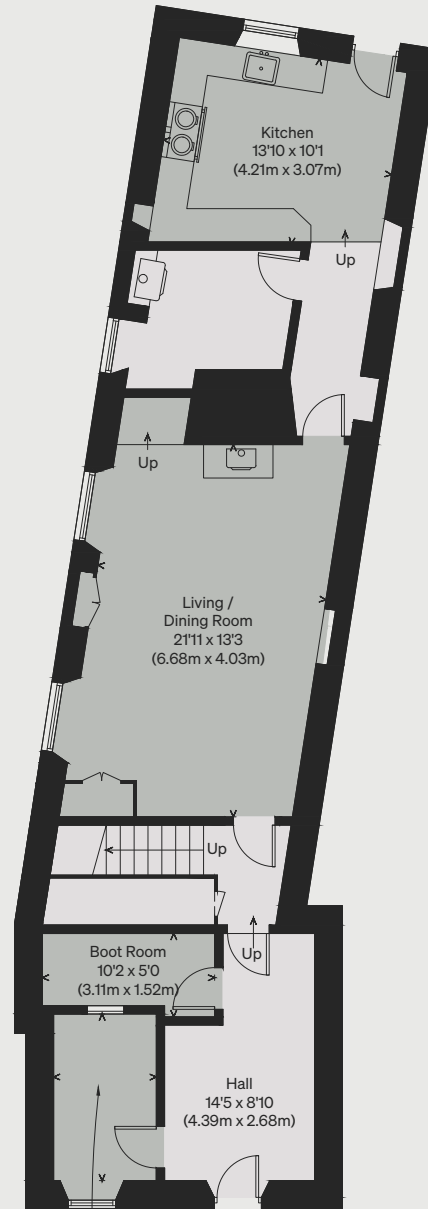
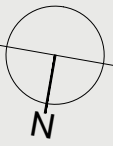
PROPERTY NAME
Bilbower House

LOCATION
Dulverton, Somerset

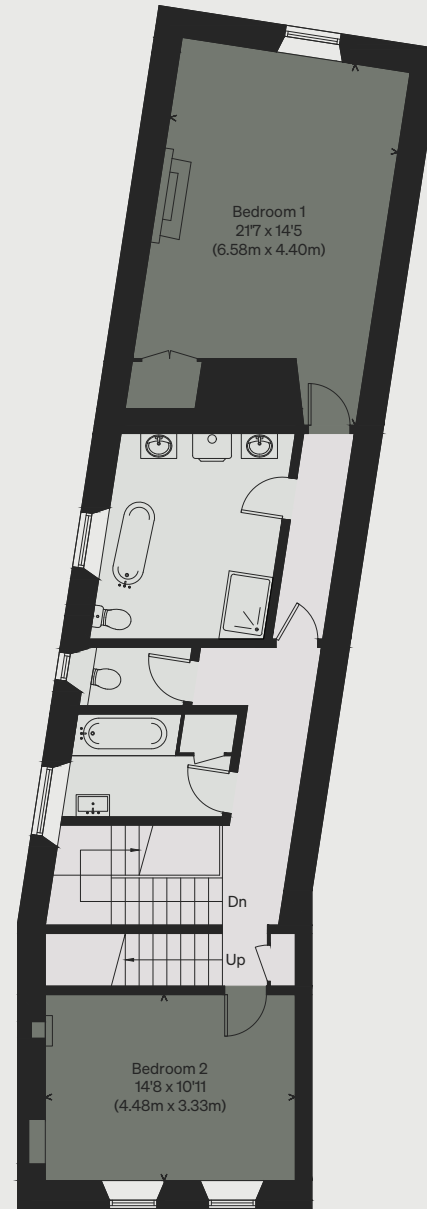
Approximate Floor Area = 256.2 sq m / 2758 sq ft
Reduced Headroom = 4.2 sq m / 45 sq ft
Total = 260.4 sq m / 2803 sq ft

*Illustration for identification purposes only,
measurements are approximate, not to scale*

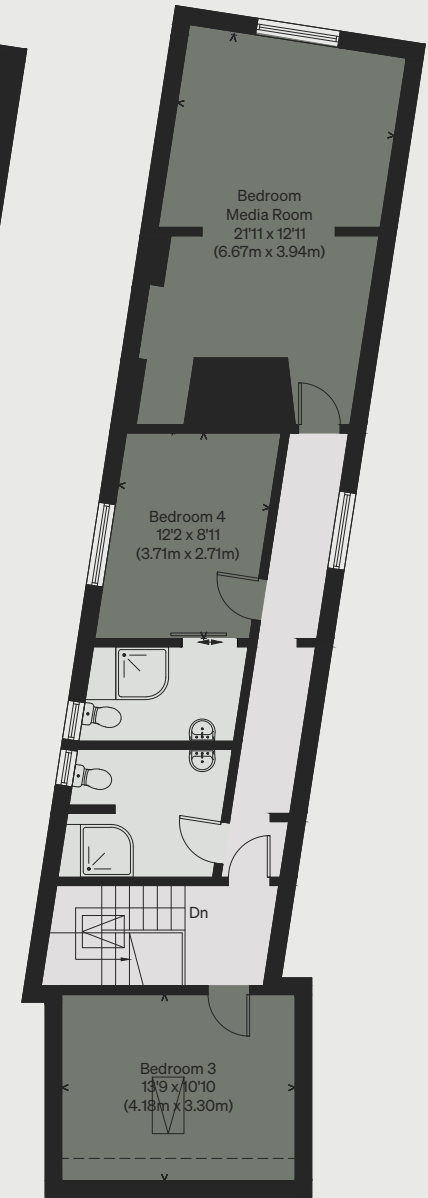
 = REDUCED HEAD HEIGHT BELOW 1.5M



GROUND FLOOR



FIRST FLOOR



SECOND FLOOR