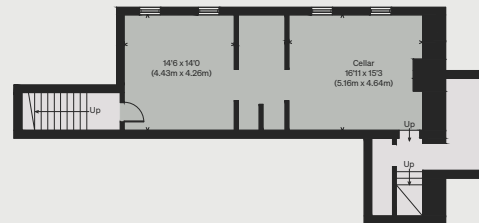


# INIGO

PROPERTY NAME  
Barming Place

LOCATION  
Maidstone, Kent

Approximate Floor Area = 708.3 sq m / 7624 sq ft  
 Sauna = 4.2 sq m / 34 sq ft  
 Greenhouse = 4.3 sq m / 46 sq ft  
 Workshop = 22 sq m / 237 sq ft  
 Total (Excluding Courtyard) = 738.8 sq m / 7952 sq ft



LOWER GROUND FLOOR

*Illustration for identification purposes only,  
measurements are approximate, not to scale*



GROUND FLOOR

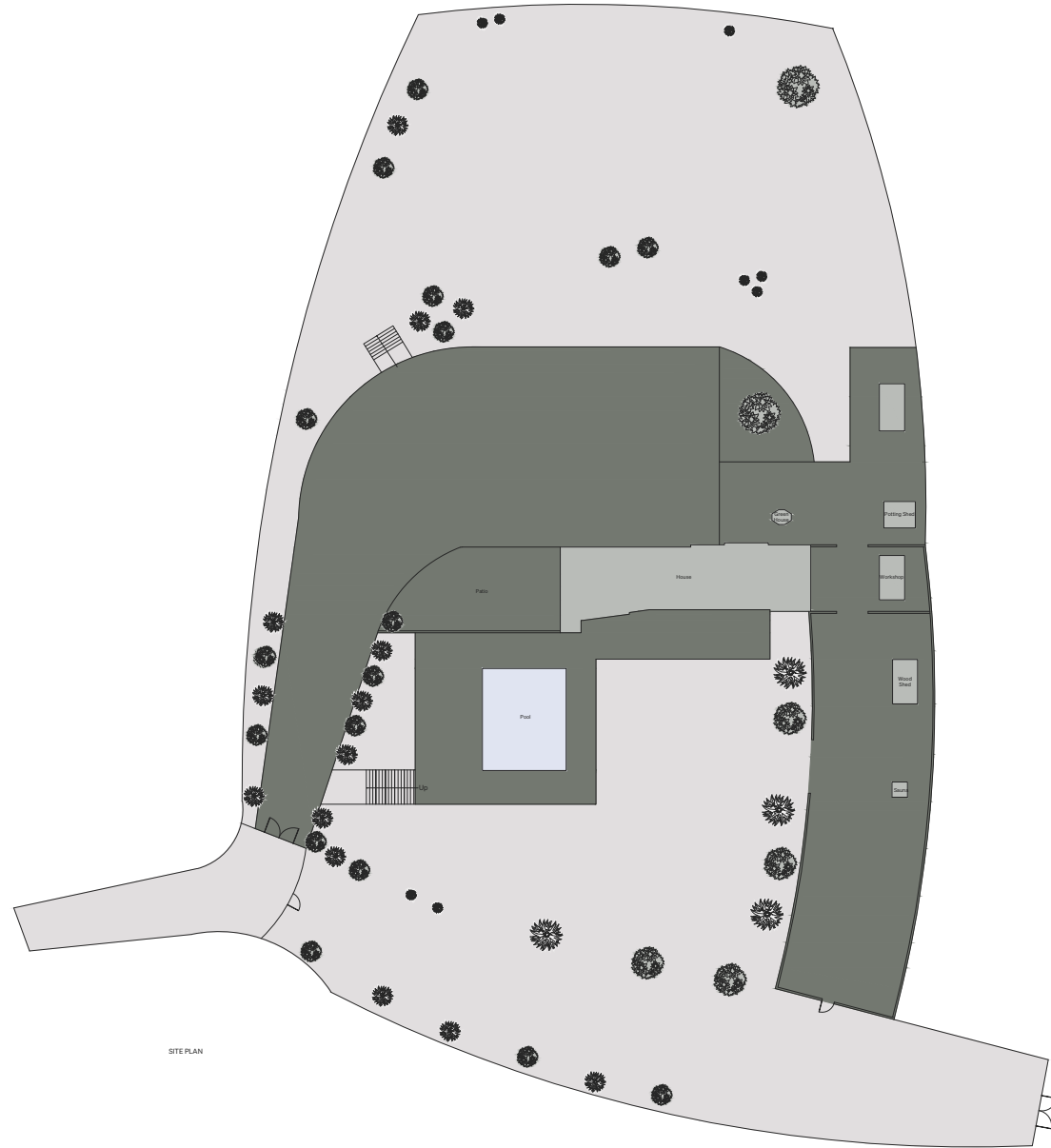
# INIGO

PROPERTY NAME

Barming Place

LOCATION

Maidstone, Kent



*Illustration for identification purposes only,  
measurements are approximate, not to scale*