



PROPERTY NAME

The Stables

LOCATION

Banbury, Oxfordshire

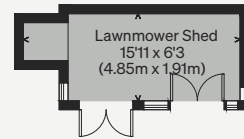
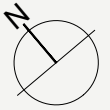
Approximate Floor Area = 143.5 sq m / 1545 sq ft

Outbuildings = 108 sq m / 1162 sq ft

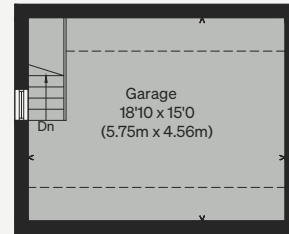
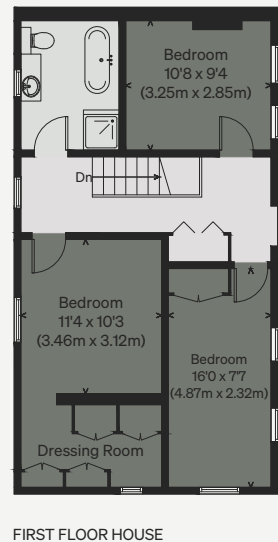
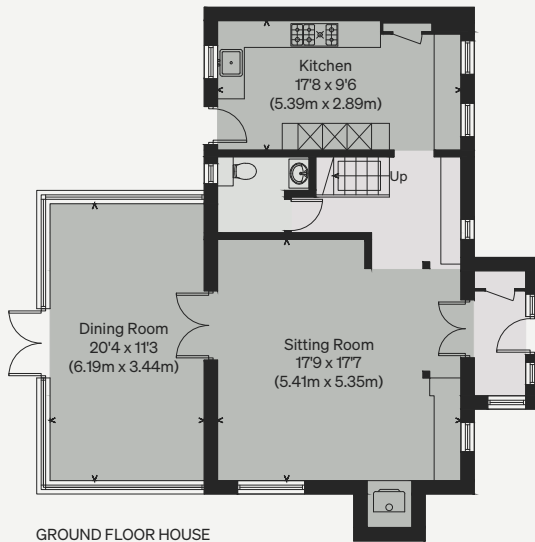
Reduced Head Room = 8.0 sq m / 86 sq ft

Total Area = 259.5 sq m / 2693 sq ft

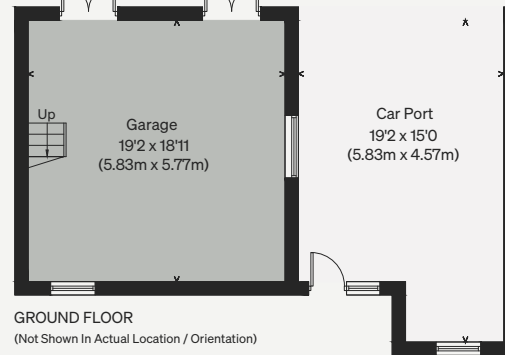
Illustration for identification purposes only, measurements are approximate, not to scale



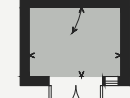
(Not Shown In Actual Location / Orientation)



FIRST FLOOR

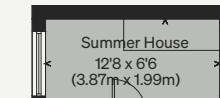


Laundry Room
6'9 x 5'0
(2.06m x 1.53m)

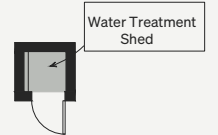


(Not Shown In Actual Location / Orientation)

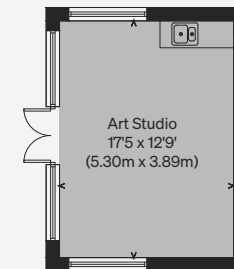
☐ = Reduced head height below 1.5m



(Not Shown In Actual Location / Orientation)

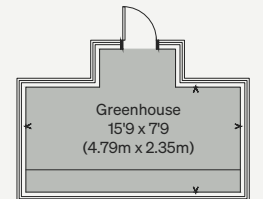


(Not Shown In Actual Location / Orientation)



(Not Shown In Actual Location / Orientation)

OUTBUILDINGS



(Not Shown In Actual Location / Orientation)