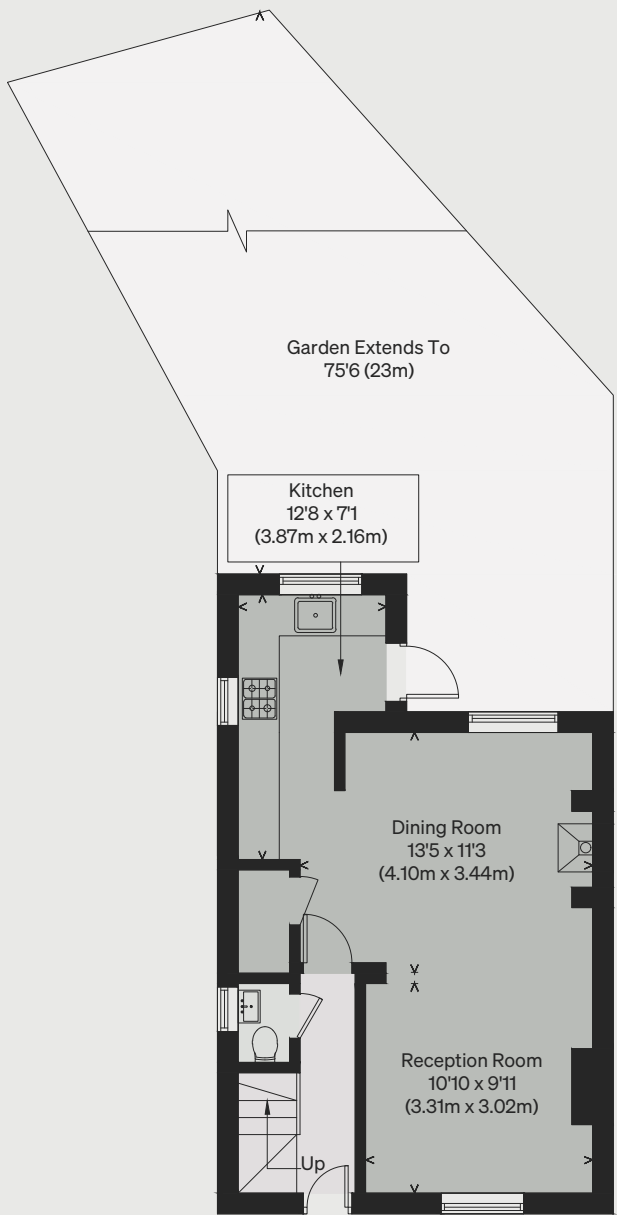


PROPERTY NAME
Willifield Way

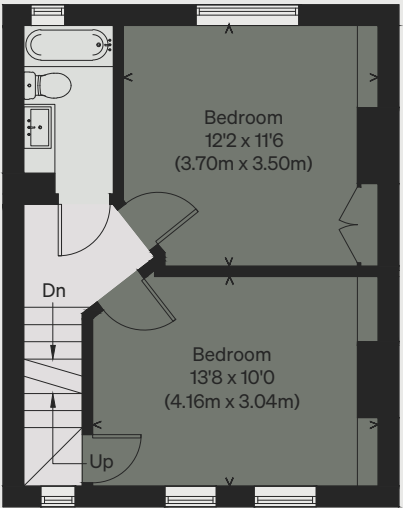
LOCATION
London NW11

Approximate Floor Area = 87.8 sq m / 945 sq ft (Including
Restricted Head Height Area)

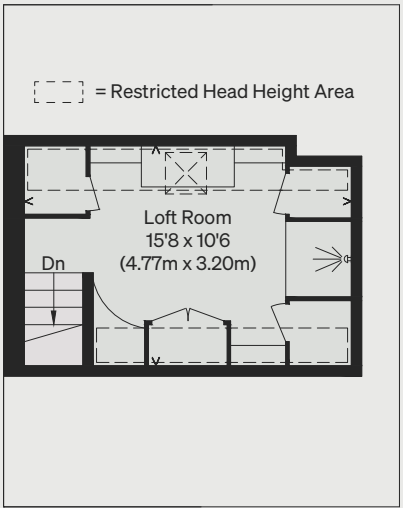
*Illustration for identification purposes only,
measurements are approximate, not to scale*



GROUND FLOOR



FIRST FLOOR



SECOND FLOOR