

INIGO

PROPERTY NAME

Richmond Road

LOCATION

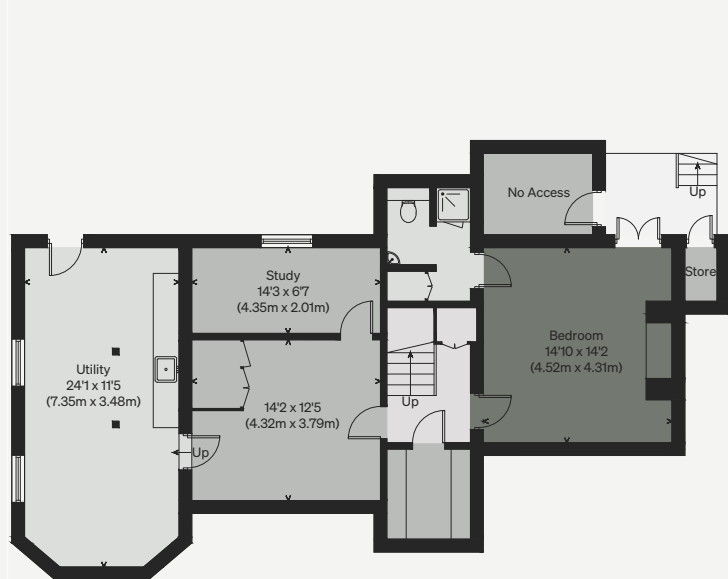
London EN5

Approximate Floor Area = 373.4 sq m / 4019 sq ft (Including Basement)

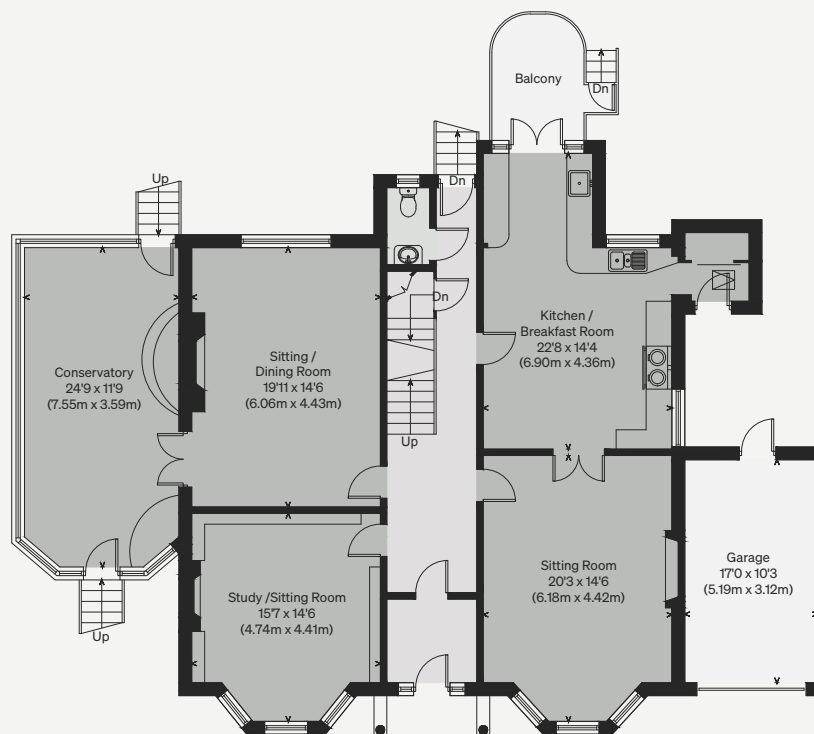
Garage = 16.2 sq m / 174 sq ft

Total = 389.6 sq m / 4193 sq ft

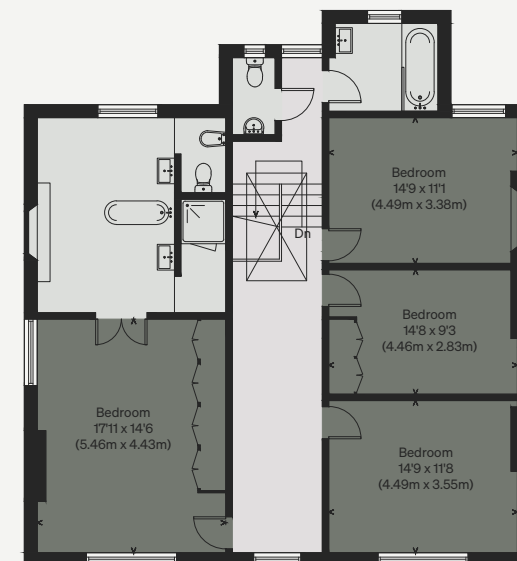
Illustration for identification purposes only, measurements are approximate, not to scale



BASEMENT



GROUND FLOOR



FIRST FLOOR

