

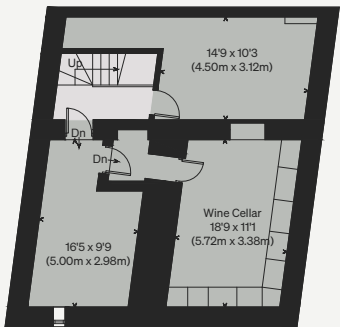
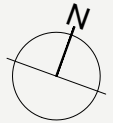


PROPERTY NAME  
Windsor Terrace

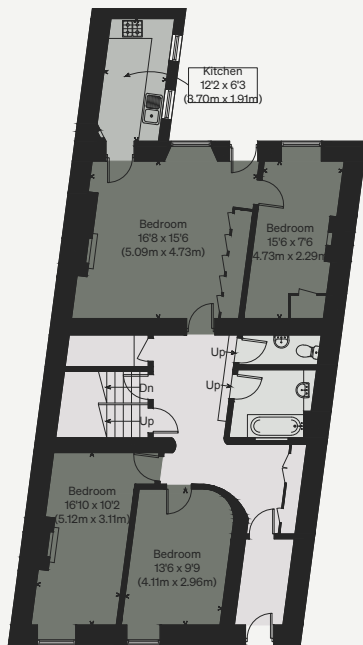
LOCATION  
Bristol, Somerset

Approximate Floor Area = 558.5 sq m / 6012 sq ft  
(Excluding Void)  
Cellar = 66.5 sq m / 716 sq ft  
Total Area = 625 sq m / 6728 sq ft

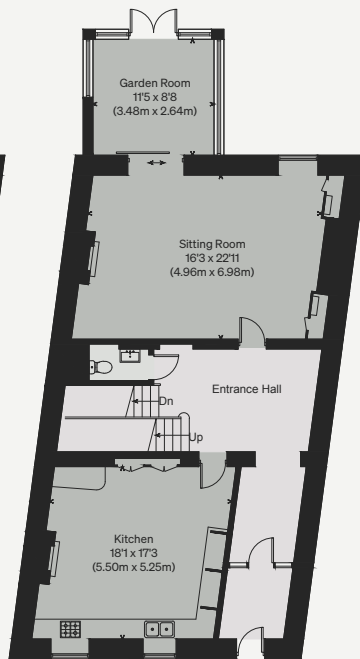
*Illustration for identification purposes only, measurements are approximate, not to scale*



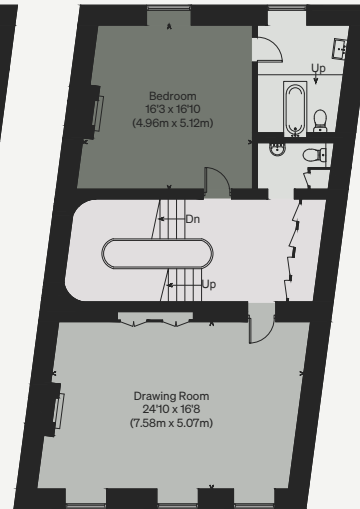
CELLAR



LOWER GROUND FLOOR



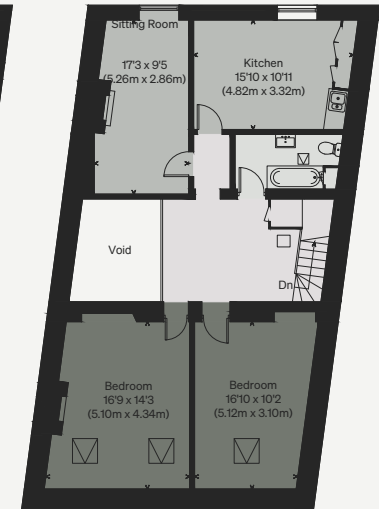
GROUND FLOOR



FIRST FLOOR



SECOND FLOOR



THIRD FLOOR