

# INIGO

PROPERTY NAME

Great Portland Street

LOCATION

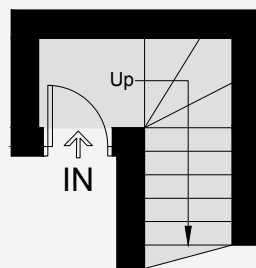
London N1

Approximate Floor Area = 71.9 sq m / 774 sq ft

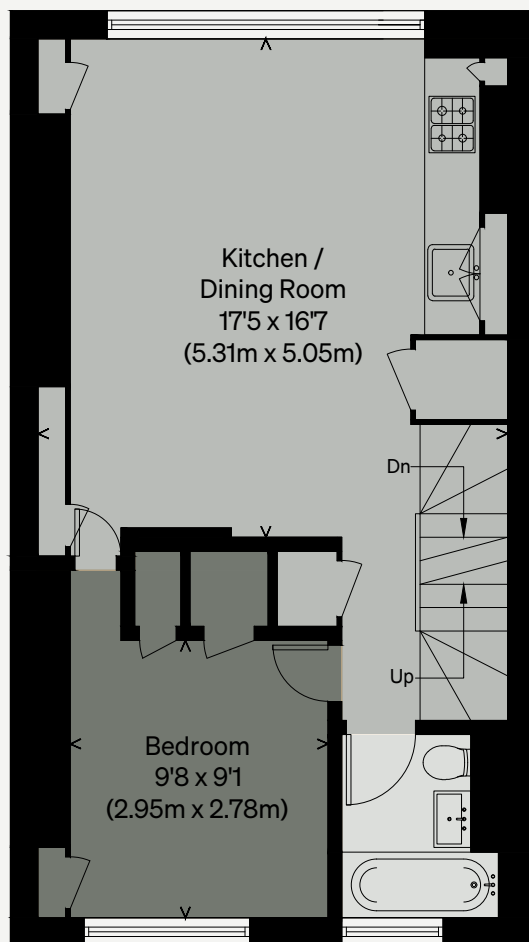
Restricted Head Height = 7.9 sq m / 85 sq ft

Total = 79.8 sq m / 859 sq ft

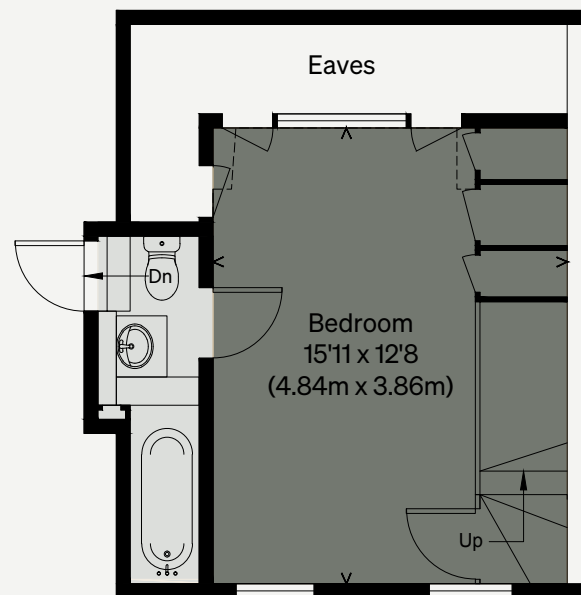
*Illustration for identification purposes only, measurements are approximate, not to scale*



THIRD FLOOR



FOURTH FLOOR



FIFTH FLOOR

