

Features include:

- Bedrooms - 2
- Bathrooms (full) - 1
- Square Feet - 1,424 sq. ft.
- Lot Size - 7,253 sq. ft.



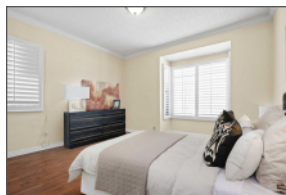
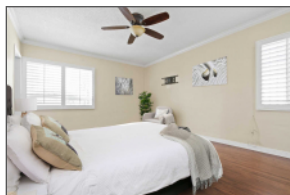
614 W 90th Street, Los Angeles, California 90044

Open House Sat 9/20/25 & Sun 9/21/25 12pm - 3pm

\$725,000



A MUST SEE!! Beautiful maintained 2-bedroom, 1-bath home of 1,424 square feet of inviting living space. Welcoming layout features hardwood floors with wooden window shutters pouring in natural light. The living and dining areas perfectly flow seamlessly to a step-down large family room that leads directly into a lovely huge backyard with a pool ideal for outdoor entertaining, or even the potential of an ADU (buyer to verify). Fully upgraded kitchen with stainless steel oven, stove, refrigerator, dishwasher, and plenty of cabinet space. The home has modern light fixtures. A one-car garage, with a long driveway for an additional vehicle parking. Recreation Park directly across the street. Centrally located near major freeways, shopping centers, schools, and public transit. This property is a gem that combines charm, space, and potential in one compelling package.



Mary Janine Peoples
REALTOR
DRE 2022312
eXp Realty
303 N. Glenoaks Blvd #200, Burbank, CA 91502
Cell: 323-377-6440
mjpeoplesrealtor@gmail.com
<http://spsid.net/466064>
Equal Housing. Information believed to be accurate but is not guaranteed

exp
REALTY

