

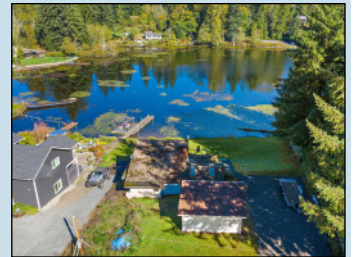
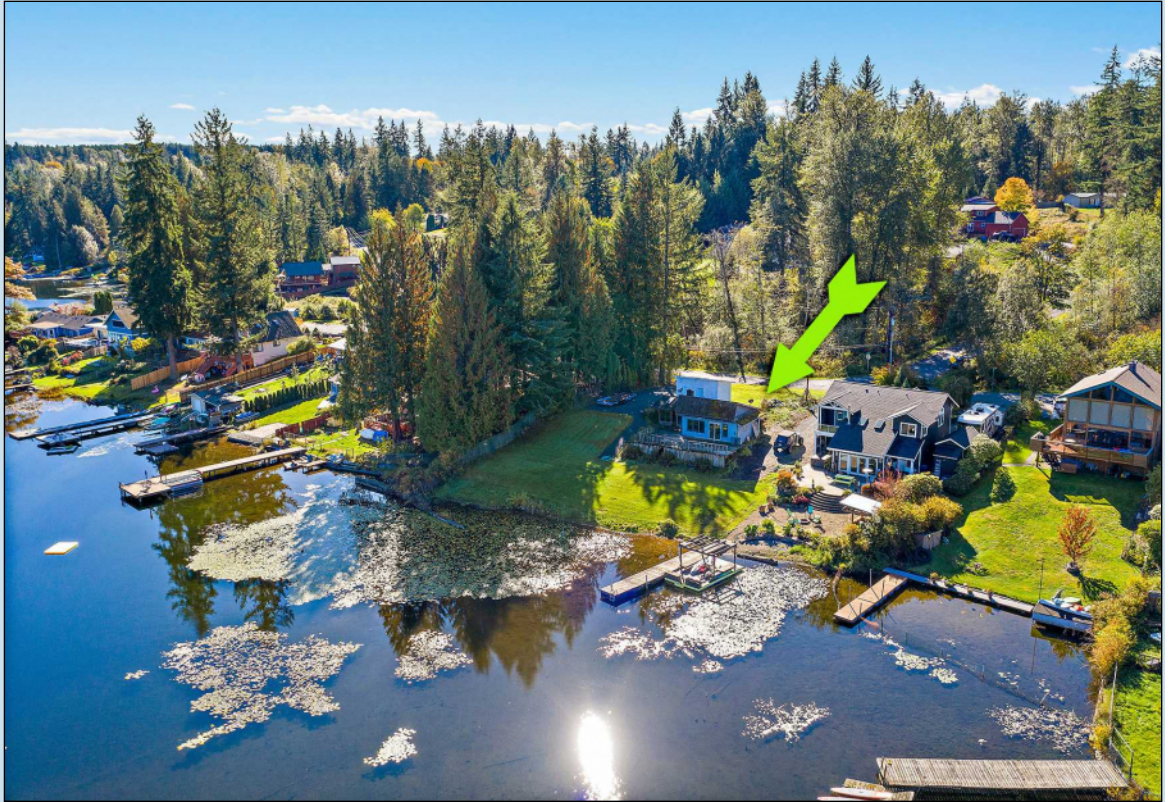


George Caudill
Broker

Cell: 425-381-0877
george@nwgeorge.com

11014 19th Ave. SE #8-115
Everett, WA 98208
Cell: 425-381-0877

5617 Lerch Road | Snohomish | WA | 98290



[\$460,000]

For Sale



1 bedroom

This rare WATERFRONT double parcel on Lake Bosworth is perfect for your vacation retreat or forever home! This prime double-lot forms one contiguous parcel with a no-bank lake frontage of 108'±. Kayak, canoe, or swim on this non-motorized 78' deep lake with excellent trout, salmon & bass fishing & a mix of homes & cabins surrounding it. The



Equal Housing. Information believed to be accurate but is not guaranteed

<http://MyWaterfrontRetreat.com>