

Features include:

- Bedrooms - 3
- Bathrooms (full) - 2
- Square Feet - 1,795 sq. ft.
- Lot Size - 7,259 sq. ft.

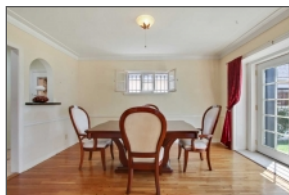


4135 S Victoria Ave View Park, California 90008

\$998,000



Nestled among multi-million dollar homes is an amazing opportunity to own in LAs most sought after View Park. Lrg courtyard leads to a serene sanctuary where you can happily and safely shelter in place with your loved ones. Home has been meticulously maintained and lovingly cared for. Remodeled customized kitchen highlights; Adler wood cabinets, granite counter tops and back-splash. Open concept allows living room to flows graciously into dining-room for a smooth transition. Living room has vaulted ceiling and marble fireplace. Semi-glass wall window and French doors open to the yard in both living room and dining room, infusing an abundance of light in; inducing hardwood floors to glisten. Generous Sz 3 bdrms are bright and airy. 1st bdrn in front of home, with private access to bath. Through door off living room is family quarters; a 2nd and master bdrms, and a lrg bath. Basement could be converted to wine cellar. Relax and have morning cafe and dine al fresco on the back patio, gazing into expansive backyard.



Alice Hines
Realtor
Coldwell Banker Residential Brokerage
5161 California Ave, Irvine, Ca 92617
Cell:(323) 901-4010
ahines@cbzhomes.com
<http://spsid.net/275725>
DRE 01830275

