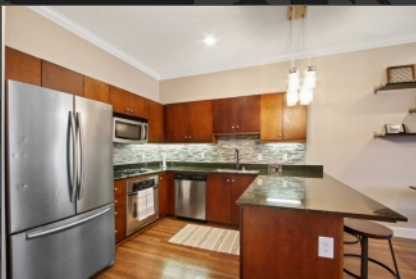


Features include:

- Bedrooms - 2
- Bathrooms (full) - 2
- Square Feet - 1,046 sq. ft.
- Lot Size - 1,000 sq. ft.

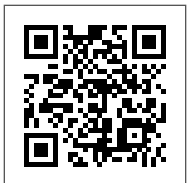
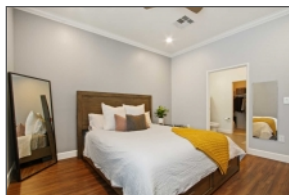


435 W Center St #421 Anaheim, California 92805

\$448,800



Location, Location! This Stunning Modern Harbor Lofts 2 bed 2 full bath Penthouse is in a Rare Corner End Unit location with only one shared wall. Convenient Prime Location in the Anaheim Colony Historic District by the Packing House, Garden Walk, the Anaheim Ice Rinks, and much more right outside your door! Virtual Walk-Through Tour Link: <https://bit.ly/3b9MUKU> As you enter you are immediately welcomed by beautiful Laminate Wood Floors and Soaring High Ceilings across the Open Great Room spanning the full length of the building from the Gorgeous Kitchen, through the dining, and into the Family/Living Room. The Spacious Kitchen is well equipped with sleek granite counter tops, glass tile back-splash, dark wood cabinets, stainless steel appliances, and a breathtaking 8-light cluster cylinder pendant above the large peninsula. Upgrades throughout include Crown Molding, Tall Baseboards, Ceiling Fans, recessed LED lighting, Wi-Fi Smart Dimmer Switches, USB wall outlets, Laminate flooring, and much more! The Convenient indoor laundry closet includes a full-size washer and dryer. The Secure Gated 2-car end unit parking spots are in the lower Parking Garage right next to the elevator. The Harbor Lofts Community offers a resort-style pool and spa area with loungers, couches, large umbrellas, tables, chairs, and BBQs on the same level as a gym and weight equipment. Enjoy the Many Great nearby entertainment options and being close to the I-5 and 91 freeways, FRAN, and Disneyland!



Chris Marple
Broker
VIP Realty Group & Elite Investments
PO Box 2725, Mission Viejo, CA 92690
Cell:949-547-6937
buyinoc@gmail.com
<http://spsid.net/275552>
DRE 01719697

