

**Features include:**

- Bedrooms - 2
- Bathrooms (full) - 2
- Square Feet - 1,120 sq. ft.
- Lot Size - 1,750 sq. ft.

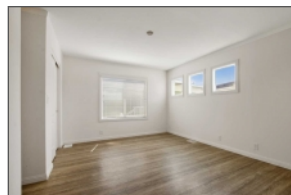


**903 W 17th St SPC 53 Costa Mesa, California 92627**

**\$194,900**



This Brand New Silvercrest Bradford is a perfect beach adjacent cottage for Seniors (55 and older) wishing to move closer to the beach and Ocean. It would be a great second home for vacationers, Snowbirds or locals who want a weekend getaway. The Home has a New England beach Bungalow exterior look and feel, Once inside the home resonates with walnut colored cabinets offset by a whirlpool stainless steal appliance package and beige corian counter-tops. The open floor plan , with crown molding 2 bedrooms and two bathrooms, provide comfort and warmth throughout. .. This is a home you will find cozy and comfy at first sight.



John Nolan  
REALTOR®  
Manufactured Home Works  
17280 Newhope St., Fountain Valley, California 92708  
Cell: 714-600-2054  
[john@home-works.net](mailto:john@home-works.net)  
<http://spsid.net/274188>  
DRE 1500788

  
Manufactured Home Works

