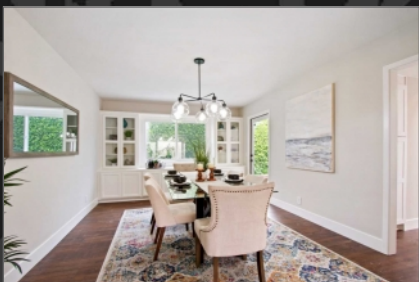


Features include:

- Bedrooms - 4
- Bathrooms (full) - 3
- Square Feet - 2,400 sq. ft.
- Lot Size - 5,500 acres

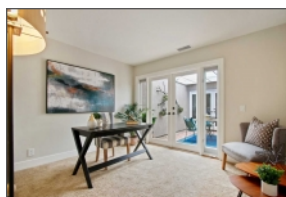
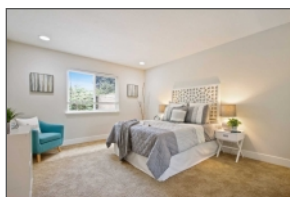


19402 Sierra Chula Rd Irvine, California 92603

\$1,575,000



Light and bright 4 bedroom, 3 bathroom, 2 car attached garage, single level residence, with high beamed ceilings! Formal large dining room with built-ins, formal living room, large family room and kitchen. It is unusual for single level home to have this generous square footage with large bedrooms. Tax roles have incorrect square feet since home was expanded by original owner. Home has single pane french doors (4 sets of them!), skylights, replaced windows, large plank hardwood floors, recessed LED lighting, newer furnace and air conditioner, fireplace, updated bathrooms, new baseboards, newer doors, bricked atrium, updated landscaping. The private back yard has a patio area, bricked gas fire pit, seating wall, grass area, fruit tress, flowers, and room for a vegetable garden. This is a customized plan 6 that has been expanded and added on too. Home is light and bright with great flowing floor plan. Do not miss this home! Only second time ever on the market. Has tremendous charm and great bones. It is special.



Maureen Mulligan
Senior Sales Executive REALTOR
Realty Source, Inc.
31 Urey Court, Irvine, CA 92617
Cell: 949-933-7778
realtormo@me.com
<http://spsid.net/272414>
DRE 01018733

