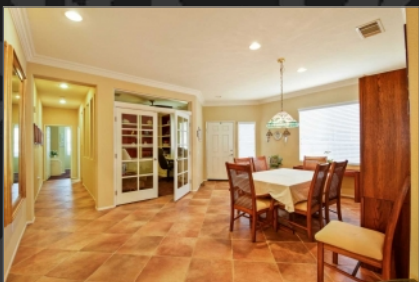


Features include:

- Bedrooms - 2
- Bathrooms (full) - 2
- Square Feet - 1,868 sq. ft.
- Lot Size - 5,663 sq. ft.

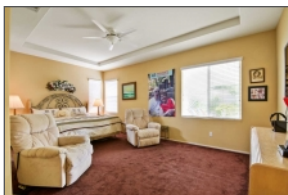


28265 Hearthside Dr Menifee, California 92584

\$395,000



Have you ever imagined living in a resort? Now you can stop dreaming and make your dream into a reality with this brand NEW LISTING located in the gorgeous 55 and older highly sought after OASIS Community in Menifee! As you walk into this home you will notice the open concept, gorgeous crown molding, tile flooring and recessed lighting. The kitchen features large island perfect for entertaining which looks into the family room with cozy fireplace and custom built in entertainment center. Step out the sliding doors to your backyard with a pergola patio cover and lush landscape great for those warm summer nights! This home also features 2 bedrooms one which is the master with a on-suite bathroom with huge walk in closet 2nd bedroom is perfect for a guest room. The office features custom built in bookcases, desk and french doors for some extra privacy, off the kitchen is also large side by side laundry with plenty of storage space top to bottom. The OASIS community is where you want to be and features a 22,250 sq ft clubhouse and outdoor recreation area, easy access to Menifee Lakes 36 hole championship golf course, tennis courts, fitness center, billiard room, bocce ball, shuffleboard courts, outdoor pool, spa BBQ area, amphitheater and much much more!! Close to new shopping center, easy freeway access and just 20 minutes from the Temecula Valley Wineries!!! Resort Style Living everyday with all amenities everyday in a guard gated community!!!! Please check out the VIRTUAL TOUR!!!!



Christina Ponce de Leon
REALTOR®
Bright Avenue Realty/Lending
6737 Bright Ave, Ste 109, Whittier, Ca 90601
Cell:562-243-5218
christina.poncedeleon@gmail.com
<http://spsid.net/271693>
DRE 01295346

