

**Features include:**

- Bedrooms - 4
- Bathrooms - 1.75
- Square Feet - 1,484 sq. ft.
- Lot Size - 5,356 sq. ft.

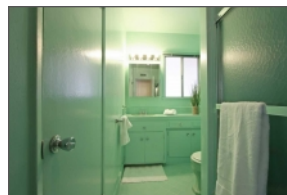
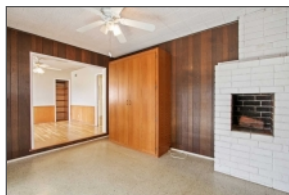


# 16903 Kornblum Ave Torrance, California 90504

**\$689,000**



What a great opportunity to put your personal touches on this family home located in a sought after Torrance neighborhood! This home has been lovingly cared for, and is ready for the next owners to create their own masterpiece. This perfect floor plan has 1484 square feet of living space, 4 bedrooms plus a bonus room, 1 and 3/4 baths, and a separate laundry room. The sunlit living room is welcoming, and features a brick fireplace perfect for our fall and winter evenings. The generous size eat in kitchen has plenty of cabinetry, and shiny white tile counters. Other features of this home are beautiful hardwood floors, central heating, a two car attached garage, a private rear yard with a covered patio, and an oversized front porch. This family home is ideally positioned near El Camino College, Alondra Park and Golf Course, The South Bay Galleria shops and restaurants, and award winning Torrance Schools. A great opportunity not to be missed!



Mary Claus  
REALTOR  
RE/MAX Estate Properties  
23740 Hawthorne Blvd 2nd Floor , Torrance, CA 90505  
Cell:(310) 529-6687  
mclaus1959@aol.com  
<http://spsid.net/269974>  
DRE 01411861

