

Features include:

- Bedrooms - 4
- Bathrooms - 2.5
- Square Feet - 1,993 sq. ft.
- Lot Size - 5,250 sq. ft.

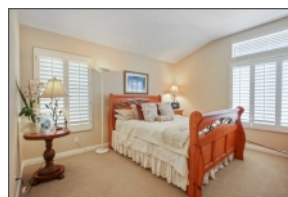


# 31 Rodeo, Foothill Ranch, California 92610

**\$865,000**



Location, Location, Location. Your Prime corner lot home is nestled against the rolling hills of Whiting Ranch Wilderness in Prestigious Foothill Hill Ranch. Majestic marble flooring greets you as you enter the home with Vaulted Ceilings and Windows allowing an abundance of light throughout the home. The home has plantation shutters throughout. The Kitchen has Bay Windows which opens into the family room allowing the family to enjoy quality time together. This 4-bedroom 2.5 bath homes has it all. All FOUR BEDROOMS are upstairs. The MASTER SUITE boasts a true 5-PIECE BATHROOM (dual vanity, separate soaking tub and shower, and separate/enclosed toilet) with walk-in closet. Newly installed crown modeling and new flooring brings this home together. Enjoy your evening sitting in your Gazebo in the large backyard, Let the handy person spend quality time in the beautiful 3 car garage with tiled flooring. Foothill Ranch offers fantastic schools and outdoor recreation, with close proximity to Irvine, Toll Roads, Shopping/Dining, Cinemas, and Much Much More!



Philip Bendler  
Broker  
Windem Real Estate  
780 Roosevelt Suite 100, Irvine, Ca 92620  
Cell: (949) 922-5649  
pbendler@windem.com  
<http://31rodeo.property2tour.com>  
DRE 01747132

