

Features include:

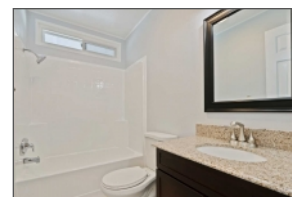
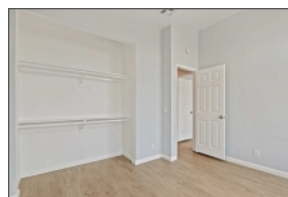
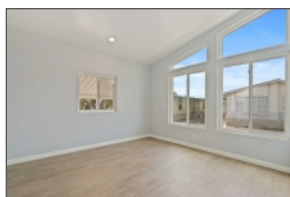
- Bedrooms - 3
- Bathrooms - 2
- Square Feet - 1,440 sq. ft.

12300 W Lilac Ave #223 Santa Ana, CA 92704

\$169,990



A Must-See Home! Do not Miss out on this opportunity of a 3-bedroom 2-bathroom Mid Century styled Home that has been remodeled to be better than new! Just like you see on TV we have transformed this 1984 home into a modern model. The list of new items is too extensive to fully detail however we will highlight a few - All new wood flooring throughout - New wet area Tile floors - All New Bathrooms - New dual rods and shelving in closets - New paneled Doors - All Interior and Exterior Color Schemes - All New lighting Throughout - New Kitchen Countertops - New Drought Resistant Landscaping - Stainless Steel Appliances The home has a very cozy, livable feel throughout thanks to extremely high vaulted ceilings, a wood burning fireplace, a Huge Storage Shed, Classic Eichler inspired design, a large front porch and generous parking for 2 cars in a gated community. We promise you will be amazed this is a mobile home. Stoneridge #223 is sensibly priced at \$169,000.00 for a young family to start building wealth by living in the equivalent of your own savings account rather than some landlords. Or if you are a senior couple hoping to downsize, reduce maintenance work and get rid of your annual property tax burden.



John Nolan
REALTOR®
DRE# 1500788
Manufactured Home Works
145 W Main St Ste 220, Tustin, Ca 92780
Cell: 714-600-2054
john@home-works.net
<http://12300wllilacave223.property2tour.com/>

