

Features include:

- Bedrooms - 2
- Bathrooms (full) - 2
- Bathrooms (half) - 1

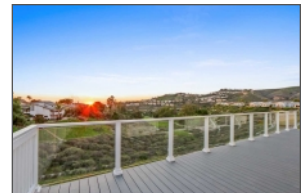
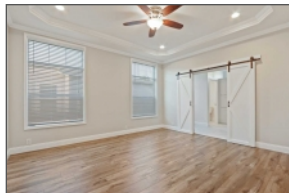


# 113 Mira Adelante San Clemente, Ca 92673

**\$749,990**



Come visit and feel the cool ocean breeze, even on the hottest days you may not need air conditioning. 113 is set on the Last New Lot on the Ocean Side of Mira Adelante in this quiet, peaceful, lovely resident owned senior community in San Clemente with no space rent because you own your land! The 2 bedroom/ 2 1/2 bath residence with a large open floor plan. 9 foot side walls and skylights throughout. A huge kitchen with a 7' x 4' island featuring Quartz countertops and Chefs series stainless steel appliances. The light filled home has the largest available windows and patio doors, a large master bedroom and bath with his and hers walk-in closets. Shorecliffs Terrace is located less than 1-1/2 miles from the beach. 113 Mira Adelante is nestled atop an ocean bluff, looking down upon the Shorecliffs Golf Club in the valley below. The home will be a one of a kind custom with a Granite lined fireplace, Transom windows, Quartz and Granite Counters, porcelain tile and hardwood laminate flooring. A 2 Car Garage with room for storage and a Classic Carriage House Door. Multiple siding transitions give the homes exterior architectural charm and character. Shorecliff Terrace is an idyllic gem of a retirement community with an active, diverse set of accomplished residents who are friendly and hospitable.



John Nolan

REALTOR®

Lic# 1500788

Manufactured Home Works

145 W Main St Ste 220, Tustin, Ca 92780

Cell: 714-600-2054

john@home-works.net

<http://113miraadelante.property2tour.com>

