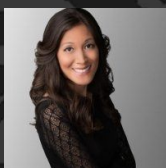


Features include:

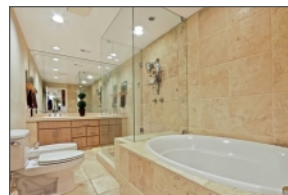
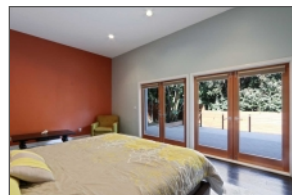
- Bedrooms - 3
- Bathrooms - 3
- Square Feet - 2,047 sq. ft.
- Lot Size - 3,799 sq. ft.



3366 Troy Dr Los Angeles, CA 90068



Come see this Modern Mid Century Gem located in the Hollywood Hills. Situated in the highly desirable Hollywood Manor/Lake Hollywood neighborhood with great views of the mountains and natural light that floods the home throughout the day. This home boasts exquisite detail and craftsmanship featuring 2,047 square feet, 3 bedrooms, 3 bathrooms with original wood floors. Upgraded and modern fixtures throughout the home. The open floor plan compliments entertaining guests which flows from living area to dining area with French-doors that open to a large balcony. On the lower level, the master suite features a sitting room with high ceilings and master custom designed large walk in closet. The remodeled bathroom with upgraded counters, bidet, and soaking tub. Both downstairs bedrooms open onto the expansive deck that has been recently upgraded with Azek for minimal maintenance. This fully redesigned and remodeled private backyard is a great feature for families that enjoy entertaining. This home has it all ! It is nestled in an ideal location less than 5 miles to 101, 134, I-5 Freeways. Close to the Hollywood Bowl, Ford Theater, major production studios, Universal Studios, Shopping Centers and Restaurants.



Tiffany Yoon
Realtor
BRE# 01895231
Real Estate Xperts
823 N. Harbor Blvd, Fullerton, CA 92832
Cell:949-677-5721
tiffany@rexnow.com
<http://3366troydr.property2tour.com>



"all we need is one day"
-real estate xperts

