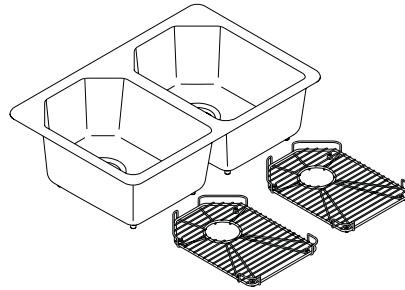


KALLISTA®

Cast Iron Undercounter Kitchen Sink

INSTALLATION INSTRUCTIONS



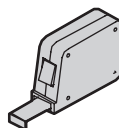
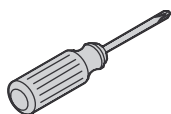
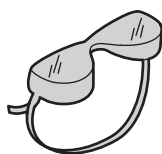
L20305

INSTALLATION INSTRUCTIONS

THANK YOU FOR CHOOSING KALLISTA

We appreciate your commitment to KALLISTA quality products. Please take a moment to review this manual before you install your KALLISTA product. If you encounter any installation or performance problems, please do not hesitate to contact us at the phone number listed at the bottom of the page.

TOOLS



Plus:

- Support Framing Materials (Optional)
- Sealant
- Rags

IMPORTANT INFORMATION

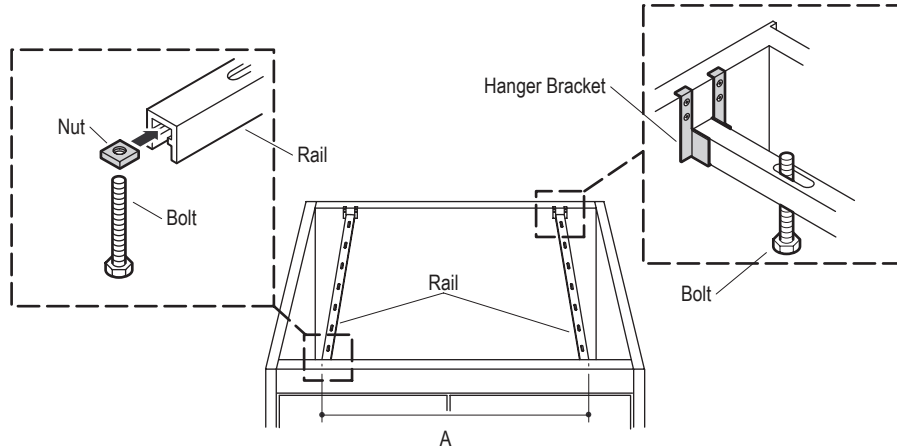
CAUTION: Risk of personal injury or product damage. Cast iron sinks are very heavy. Get assistance lifting the sink.

IMPORTANT! Using a wood support frame is an installation option for all undercounter cast iron sinks, but is required for non-rectangular sinks. Refer to the “Install Using a Wood Support Frame” section for this option.

- ☐ Undercounter sinks should be installed by experienced installers.
- ☐ To ensure a safe and damage-free installation, **two people should install the sink.**
- ☐ Prior to installation, unpack the new sink and inspect it for damage. Return the sink to its protective carton until you are ready to install it.
- ☐ Plan the sink installation so future removal from underneath the countertop is possible without damaging the countertop. **Do not use adhesive sealants.**
- ☐ Use proper fasteners and techniques to ensure that the frame will support a minimum of 300 lbs (136 kg). Locate the fasteners for easy access in the event the sink needs to be removed.
- ☐ A cabinet with a minimum width of 36” (91.4 cm) is recommended for this installation.
- ☐ Inspect the drain and supply tubing; replace if necessary.
- ☐ Observe all local plumbing and building codes.
- ☐ KALLISTA reserves the right to make revisions in the design of products without notice, as specified in the Price Book.

INSTALLATION INSTRUCTIONS

INSTALLATION

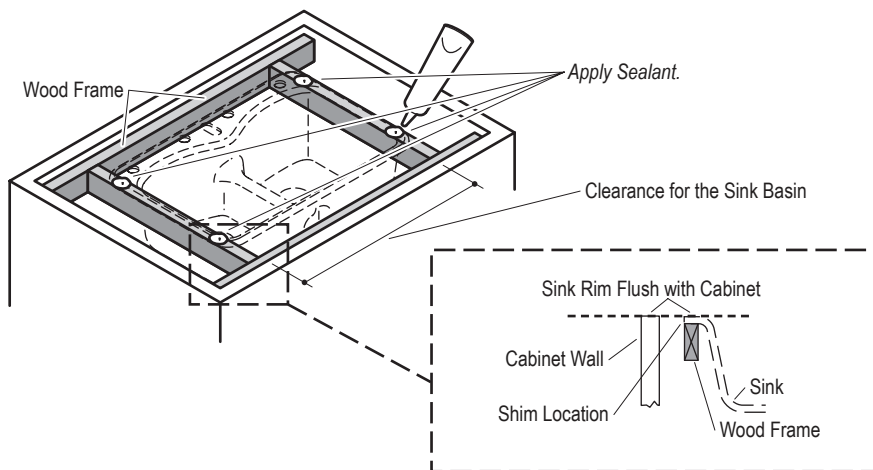


Install Using the Undermounter Kit

- ☐ Thread the bolts into the nuts two turns.
- ☐ Slide the nuts into the slots in the rails.
- ☐ Position the bolts through the rail slots where the corners of the sink will be located.
- ☐ Slide a hanger bracket onto the end of each rail.
- ☐ Position the rail assemblies into the cabinet running front-to-back.
- ☐ Measure the overall width of your sink. This distance represents the distance "A" between the outside edges of the rails as shown in the illustration.
- ☐ Position the hanger brackets according to distance "A" and mark the screw hole locations onto the cabinet.
- ☐ Drill 1/8" (3 mm) starter holes at each marked location.
- ☐ Proceed to the "Install the Sink" section.

INSTALLATION INSTRUCTIONS

INSTALLATION

**Install Using a Wood Frame Support**

- ☐ Measure the cabinet opening where the sink will be installed. Plan for adequate clearance between the faucet handles and the backsplash or finished wall.
- ☐ Construct a wood frame for the inside of the cabinet. Allow adequate clearance for the faucet valving and sink basin. Ensure the frame will support the entire sink rim.

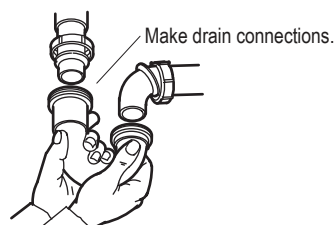
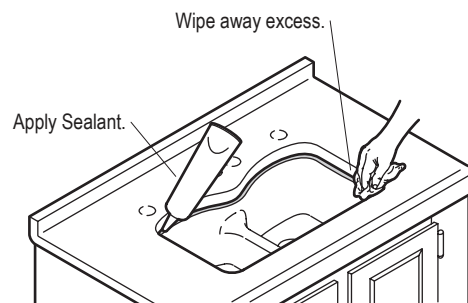
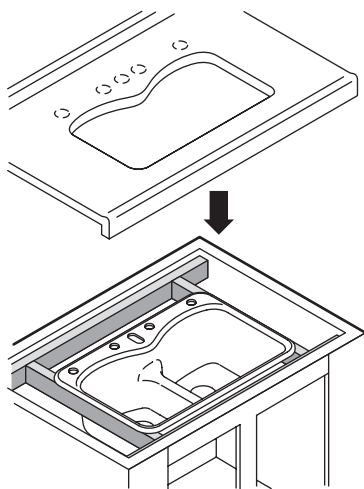
IMPORTANT! The frame should be located so that once the sink is installed, the top of the sink rim will be flush with the top of the cabinet walls.

NOTE: If needed, shims can be used to bring the sink rim flush with the cabinet walls.

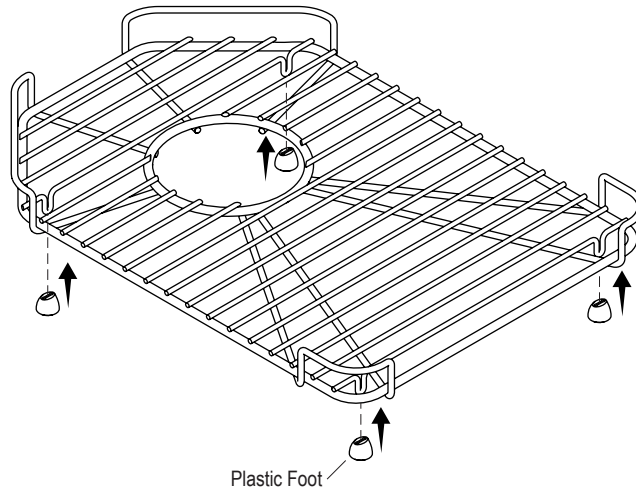
- ☐ Position the wood frame within the cabinet and secure. Locate the fasteners for easy access in case the sink needs to be removed.
- ☐ Apply a 1" (2.5 cm) bead of sealant at each corner of the wood frame where it will contact the sink.

INSTALLATION INSTRUCTIONS

INSTALLATION



- ☐ Lower the sink into the cabinet. Verify the sink is supported by the frame.
- ☐ Verify the sink is level, make any adjustments as needed.
- ☐ Install the countertop.
- ☐ Apply a thin bead of silicone sealant where the sink meets the countertop.
- ☐ Immediately wipe away any excess sealant with a damp cloth. Fill any voids if needed.
- ☐ Allow the sealant to cure for at least 30 minutes before proceeding.
- ☐ Complete the faucet and drain connections.
- ☐ Run water into the sink and check all connections for leaks.

INSTALLATION INSTRUCTIONS**INSTALLATION****Install Plastic Feet on Rack**

- ☐ Install four of the desired color plastic feet on the rack.