

# Installation Instructions

## DEEP WALL EXTENSION

### For Use With Packaged Terminal Units

Please read these instructions completely before attempting installation.

**NOTE:** These instructions apply to the Deep Wall Extension only through walls structurally adequate to support the unit, (i.e. sleeve, chassis, and accessories.)

## WARNING

### Electrical shock hazard.

**Turn OFF electric power at fuse box or service panel before making any electrical connections and ensure a proper ground connection is made before connecting line voltage.**

**If installation is made in an existing wall, ensure no cuts are made in any electrical wiring.**

**Failure to do so can result in property damage, personal injury and/or death.**

## Deep Wall Installation

**NOTE:** If wall is thicker than 13", a sheet metal wall sleeve extension **MUST** be used. **Do not exceed three extensions.**

### Important Installation Points

The following points **MUST** be considered when installing a wall sleeve extension.

- Provision made to direct excess condensate from the back of the wall sleeve to the outside of the building.
- Caulking of all potential sites where condensate or external water could infiltrate into building.
- Condensate notches are clear of sealant so condensate flows freely into extension.

**NOTE:** Improper installation of a wall sleeve extension will impair PTAC performance. Provision **MUST** be made for proper direction of air flow and condensate.

### Extension Installation

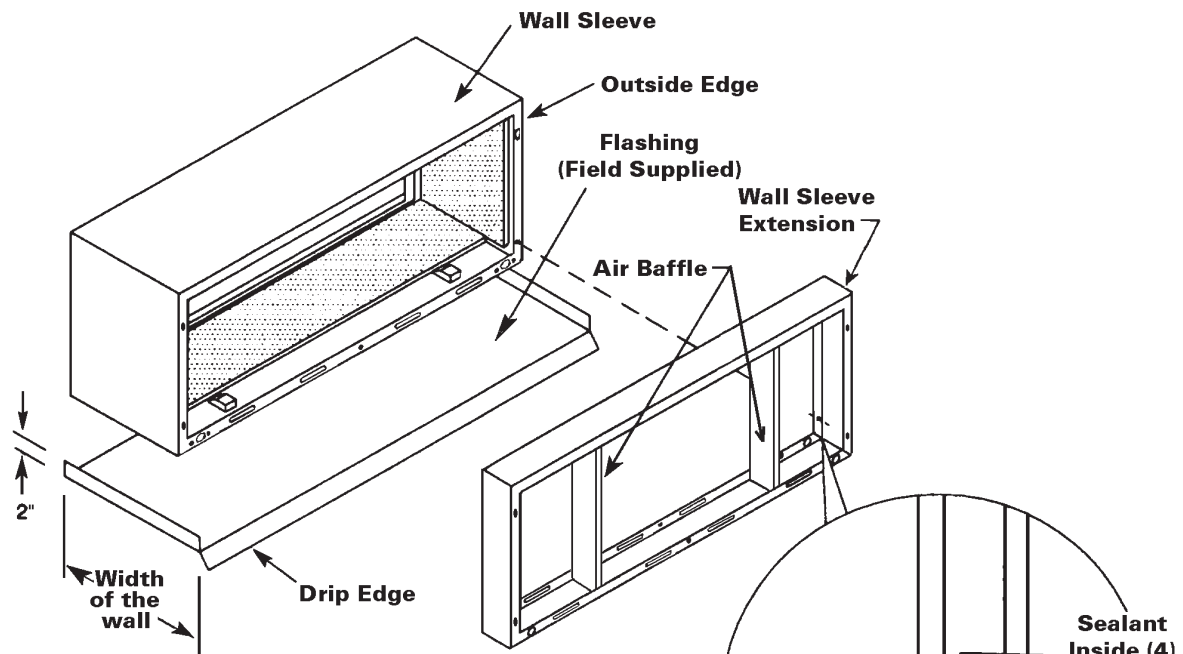
1. Fabricate and install metal flashing in wall. Refer to **Figure 1** and architectural and engineering drawings for more information.
2. Attach extension to sleeve with 4 screws (supplied).

### CAUTION

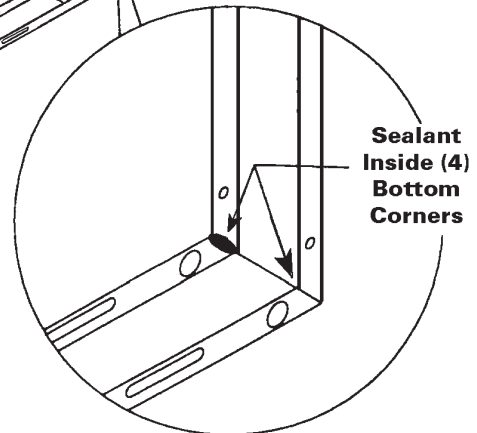
**Do NOT overtighten screws. Sleeve extension is aluminum. Overtightening will strip engagement holes.**

3. Run bead of silicone sealant along the bottom mating surfaces of the wall sleeve and the sleeve extension. Make sure bead runs 3" up both sides of flanges. See **IMPORTANT NOTE** in **Figure 1**.
4. Install in wall and secure with fasteners through the sides into the wall. Seal all exposed screw heads with a good grade of silicone sealant.
5. Caulk around the interior and exterior perimeters and other locations as shown in **Details A, B and C** in **Figure 1**.
6. Refer to grille installation instructions and attach grille.

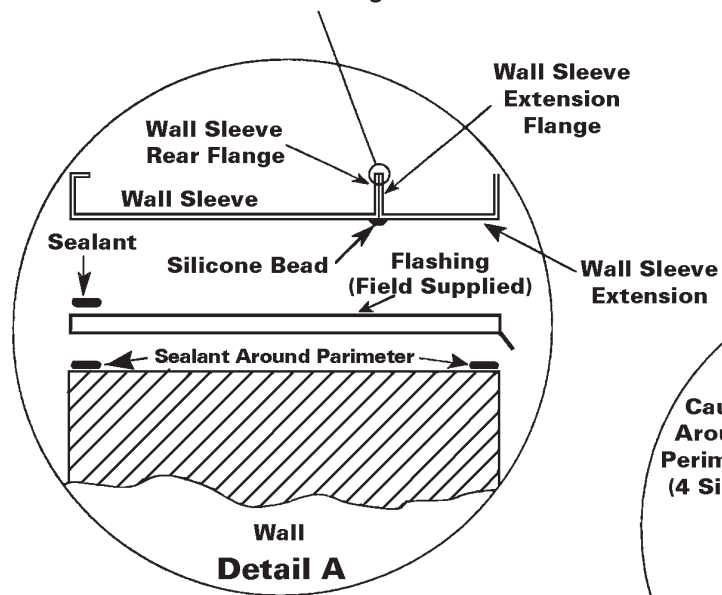
**Figure 1 - Extended Wall Sleeve and Sealant Locations**



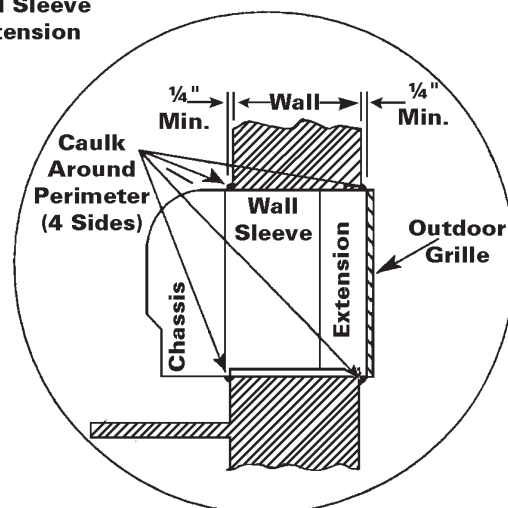
**IMPORTANT NOTE:** The silicone bead **MUST** be run about 3" up the side of the two flanges to prevent condensate from leaking.



**Detail B**



**Detail A**



**Detail C**

Accessory	Max. Wall Thickness
No Accessories	13"
With Subbase	11-1/2"
With Lateral Duct	12"