

PURCHASER	P.O. #	DATE
PROJECT	LOCATION	
ENGINEER	ARCHITECT	
SUBMITTED BY	FOR APPROVAL	FOR REFERENCE

ITEM	PLAN DESIGNATION	QUANTITY	COOLING BTU/H	VOLTAGE	FRIEDRICH MODEL

Features

- Inverter technology (variable speed compressor)
- Internal condensate pump with 23" lift* included
- Natural air flow
- 4-Way cooling
- Cooling/Heating/Fan mode
- Dry Mode
- Night Quiet Operation
- Built-in low ambient standard, down to 14°F (Cooling mode)
- 5 Fan speeds
- Evaporator frost control
- 24-hour on/off timer
- Auto restart
- Temperature display on remote
- Ultra-quiet turbo fan
- DiamonGold Advanced Corrosion Protection™
- Clean, modern look
- Flexible installation
- ENERGY STAR® qualified models
- Precise air distribution
- BLDC Motors



MC12Y3JM, MC18Y3JM



WIRELESS
REMOTE CONTROL

* Lift from drain pan to drain outlet. Use external drain pump for installations requiring condensate lift exceeding 23"

All Inverter line



MR24DY3JM



MR36TQY3JM

PERFORMANCE RATINGS		Multizone Cassette - Heat Pumps	
INDOOR MODEL		MC12Y3JM	MC18Y3JM
SPECIFICATIONS			
CAPACITY COOLING (RATED)	Btu	12,000	18,000
CAPACITY HEATING (RATED)	Btu	13,800	19,000
MOISTURE REMOVAL	Pts/h	4.2	4.2
AIRFLOW [LOW, MED, HIGH]	CFM	247 / 283 / 335	388 / 424 / 459
SOUND RATING - INDOOR	dB-A	32/35/38	34/37/38
ELECTRICAL DATA			
POWER SOURCE	V, Ø, Hz	208/230, 1, 60	208/230, 1, 60
POWER AND COMMUNICATION CABLE	No. x AWG	4C x 14	4C x 14
REFRIGERATION SYSTEM			
CONNECTIONS		Flare	Flare
LIQUID LINE O.D.	in	1/4	1/4
SUCTION LINE O.D.	in	3/8	1/2
DIMENSIONS & WEIGHT			
W X H X D	in	22-7/16 x 8-7/16 x 22-7/16	22-7/16 x 10-3/32 x 22-7/16
NET WEIGHT	lbs	31	33
SHIPPING WEIGHT	lbs	36	42
NDOOR UNIT GRILLE* W X H X D	in	27-9/16 x 7/8 x 27-9/16	27-9/16 x 7/8 x 27-9/16
INDOOR UNIT GRILLE* NET WEIGHT	lbs	7	7

PERFORMANCE RATINGS		Multi Outdoor	
		24k	36k
OUTDOOR MODEL		MR24DY3JM	MR36TQY3JM
SPECIFICATIONS			
POWER SOURCE		208/230/60/1	208/230/60/1
EST. YEARLY OPERATING COST	\$	122-125	170-245
RUNNING CURRENT COOLING MIN.-RATED-MAX.	A	2.8-6.6-14.0	3.3-11.8-17.0
RUNNING CURRENT HEATING MIN.-RATED-MAX.	A	3.0-10.2-14.1	4.9-15.5-17.8
POWER INPUT COOLING MIN.-RATED-MAX.	W	390-1430-3090	770-2720-3920
POWER INPUT HEATING MIN.-RATED-MAX.	W	420-2210-3100	1120-3580-4100
POWER AND COMMUNICATION CABLE	No. x AWG	4 X 14	4 X 14
DIMENSIONS W X H X D	inch	34-1/4 x 31-7/8 x 12-5/8	35-7/16 x 45-7/8 x 14-5/8
NET WEIGHT	lbs	130	209
SHIPPING WEIGHT	lbs	139	223
REFRIGERATION SYSTEM			
REFRIGERANT		R410A	R410A
FACTORY PRECHARGE	ft	74	98
REFRIGERANT CHARGE	oz	74	124
LIQUID LINE O.D.	in	1/4	1/4
SUCTION LINE O.D.	in	3/8	3/8
MIN./MAX. LINE LENGTH (EACH)	ft	10-82	10-82
MIN./MAX. LINE LENGTH (TOTAL)	ft	75-246	75-246
MAX. HEIGHT DIFFERENCE	ft	49	49
SOUND PRESSURE LEVEL COOLING	A	51	57
SOUND PRESSURE LEVEL HEATING	A	51	57
OPERATING RANGE COOLING MIN. ~ MAX.	°F DB	14 ~ 114	14 ~ 114
OPERATING RANGE HEATING MIN. ~ MAX.	°F WB	5 ~ 64	5 ~ 64
MINIMUM AMPACITY	A	15	17
MAX. TD FUSE/BREAKER	A	25	25

SPECIFICATIONS

Your operating costs will depend on your utility rates and use. The estimated operating cost is based on a electricity cost of \$.115 per kWh. For more information, visit www.ftc.gov/energy. Due to continuing research in new energy-saving technology, specifications are subject to change without notice.

Refrigeration line sets*

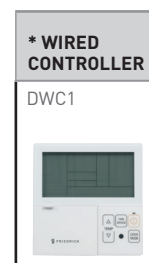
USED WITH	Length Ft.	Liquid	Suction	Kit#
9000 and 12000	15'	1/4"	3/8"	T32150
BTU indoor units	35'	1/4"	3/8"	T32350
18000 BTU indoor units	15'	1/4"	1/2"	T42150
	35'	1/4"	1/2"	T42350
24000,30000 and 36000	15'	3/8"	5/8"	T53150
BTU indoor units	35'	3/8"	5/8"	T53350

*Insulated line sets are available for all Friedrich split systems in 15 ft. and 35 ft. lengths. Each line set is equipped with flare nuts on both ends. Both liquid and suction lines are insulated. Line sets can be joined together with field supplied double male connectors. Each system requires one line set for each indoor unit installed. On multi-zone systems, line sets should be ordered based on individual indoor unit capacities not total system capacity.

Ceiling Cassette Grilles

DECORATIVE GRILLE	USED WITH
DCG1218	MC12Y3JM, MC18Y3JM models

Thermostat

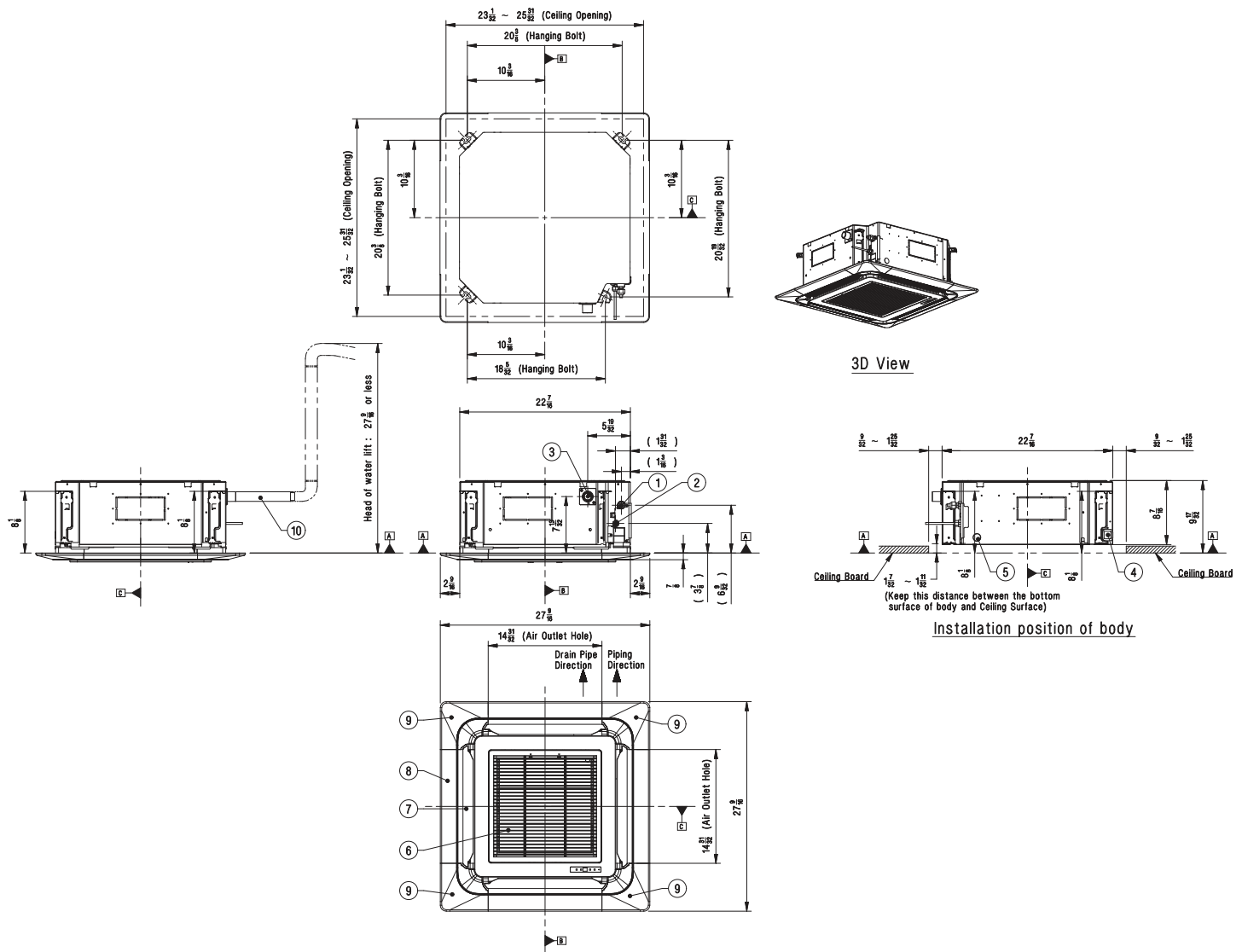


*Used with all models.



DIMENSIONAL DRAWINGS

INDOOR UNITS / MC12Y3JM



Symbols

- Datum line
- Refrigerant/Drain Piping Direction

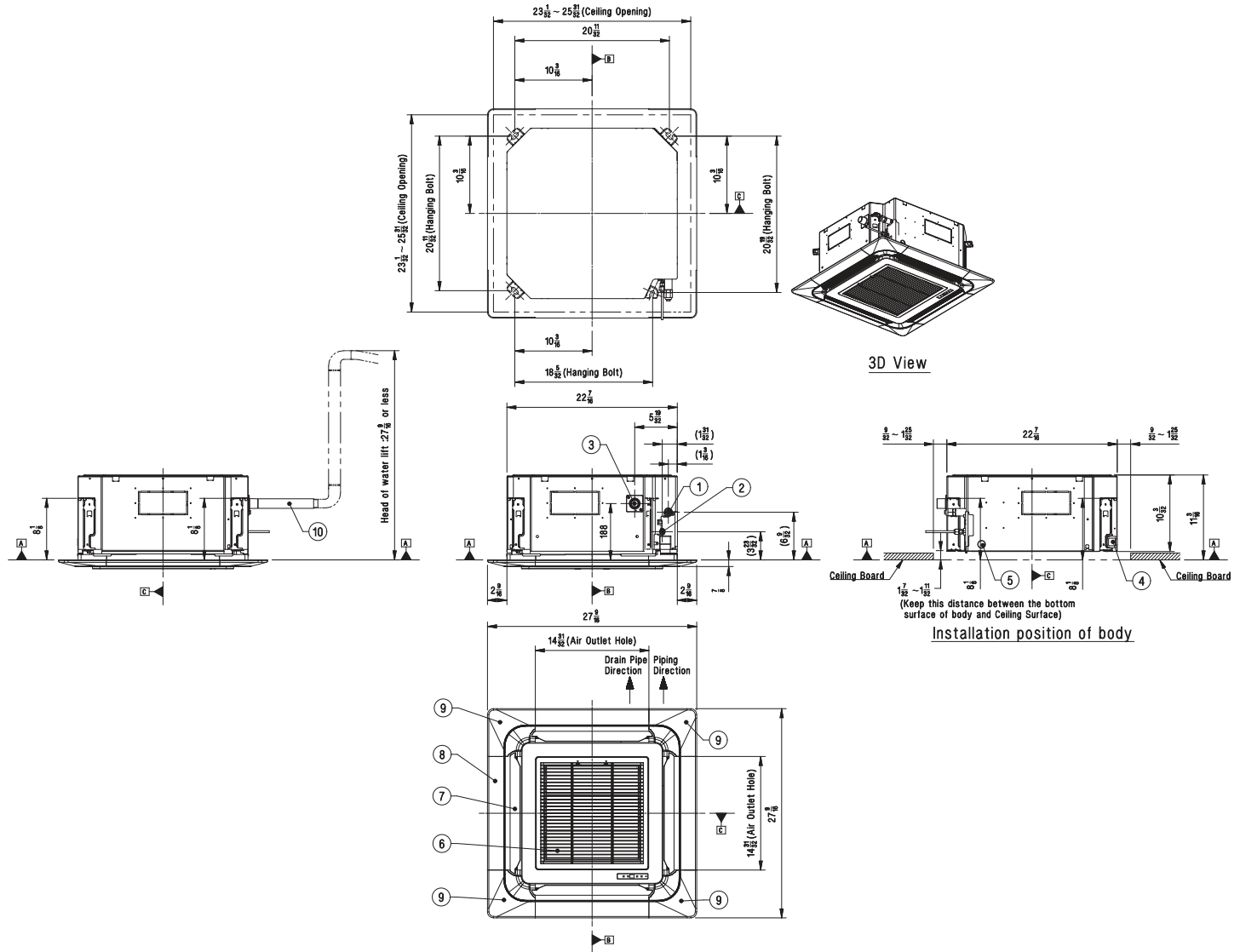
Item No.	Part Name	Description
1	Gas Pipe Connection	-
2	Liquid Pipe Connection	-
3	Drain Pipe Connection	-
4	Power and Communication cable routing whole	-
5	Wired remote controller wire routing hole	-
6	Air Inlet	-
7	Air Outlet	-
8	Decoration Panel (Accessory)	PT-UQC
9	Decoration Corner Cover	Supplied with panel
10	Flexible Drain Hose	Supplied with product

Note

- Unit should be installed in compliance with the installation manual in the product box.
- Unit should be grounded in accordance with the local regulations or applicable national codes.
- All electrical components and materials to be supplied from the site must comply with the local regulations or international codes.
- Electric characteristics chapter should be considered for electrical work and design. Especially, the power cable and circuit breaker should be selected in accordance with that.

DIMENSIONAL DRAWINGS

INDOOR UNITS / MC18Y3JM



Symbols

- Datum line
- Refrigerant/Drain Piping Direction

Item No.	Part Name	Description
1	Gas Pipe Connection	-
2	Liquid Pipe Connection	-
3	Drain Pipe Connection	-
4	Power and Communication cable routing whole	-
5	Wired remote controller wire routing hole	-
6	Air Inlet	-
7	Air Outlet	-
8	Decoration Panel (Accessory)	PT-UQC
9	Decoration Corner Cover	Supplied with panel
10	Flexible Drain Hose	Supplied with product

Note

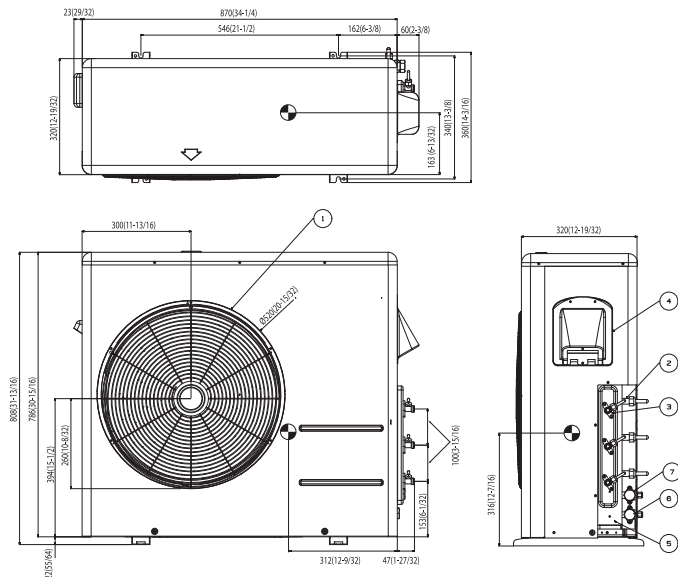
- Unit should be installed in compliance with the installation manual in the product box.
- Unit should be grounded in accordance with the local regulations or applicable national codes.
- All electrical components and materials to be supplied from the site must comply with the local regulations or international codes.
- Electric characteristics chapter should be considered for electrical work and design. Especially, the power cable and circuit breaker should be selected in accordance with that.

DIMENSIONAL DRAWINGS

OUTDOOR UNITS / MR24DY3JM

[Unit : mm(inch)]

Gravity point

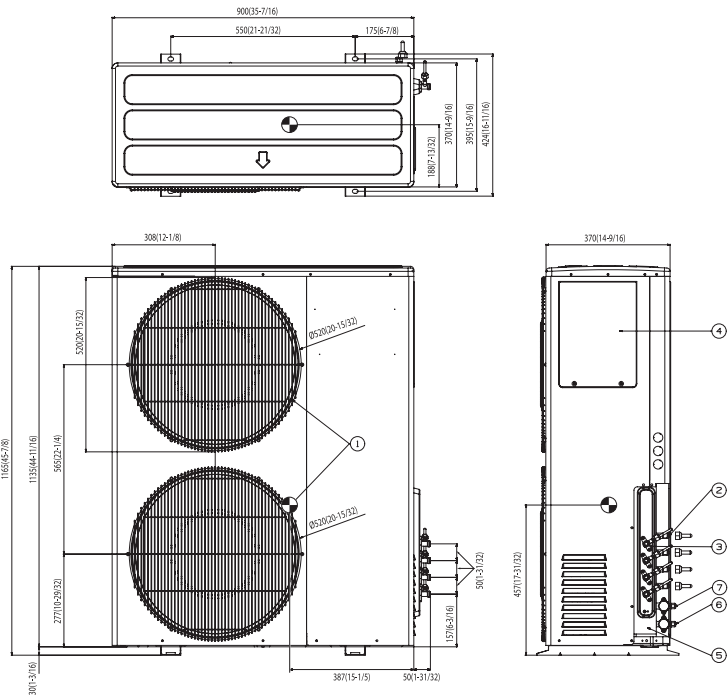


Item No.	Part Name	Description
1	Air discharge grille	
2	Gas pipe connection	
3	Liquid pipe connection	
4	Power & transmission connection	
5	Earth Screw	
6	Main Service Valve (Liquid)	
7	Main Service valve (Gas)	

Note

- Unit should be installed in compliance with the installation manual in the product box.
- Unit should be grounded in accordance with the local regulations or applicable national codes.
- All electrical components and materials to be supplied from the site must comply with the local regulations or international codes.
- Electric characteristics chapter should be considered for electrical work and design. Especially the capacity of power cable and circuit breaker for outdoor unit should be more than that of electrical characteristics chapter.

OUTDOOR UNITS / MR36TQY3JM



Item No.	Part Name	Description
1	Air discharge grille	
2	Gas pipe connection	
3	Liquid pipe connection	
4	Power & transmission connection	
5	Earth Screw	
6	Main Service Valve (Liquid)	
7	Main Service valve (Gas)	

Note

- Unit should be installed in compliance with the installation manual in the product box.
- Unit should be grounded in accordance with the local regulations or applicable national codes.
- All electrical components and materials to be supplied from the site must comply with the local regulations or international codes.
- Electric characteristics chapter should be considered for electrical work and design. Especially the capacity of power cable and circuit breaker for outdoor unit should be more than that of electrical characteristics chapter.