

RapidRoll® 600

Engineered elegance with state-of-the-art technology

ALBANY

ASSA ABLOY

Technical data sheet

ASSA ABLOY, the global leader
in door opening solutions



RapidRoll® 600

- The RapidRoll® 600 uses a modular design to provide superior operation.
- Fast opening and closing speeds improve workflow and lower utility and maintenance costs while offering high wind resistance, substantial safety features, and reliable performance in high traffic areas.
- With a variety of features and options this durable high performance door can be configured for a wide range of interior or rugged exterior applications.

DOOR MATERIAL

The door (side frame and top roll cover) is made of anodised aluminium.

SIDE FRAME COVER

Standard: delivered without cable drum covers
Option: cable drum covers can be chosen.

HINGED SIDE FRAMES

The front segment of the side frame is equipped with a hinge system and offers easy and quick access for service and maintenance. The standard balancing and tension system ensures an even and smooth run of the door.



DOOR CURTAIN

The door can be equipped with a durable RollTex® curtain with or without window or a NormaTex curtain with/without window or vision panels. A PVC curtain with coloured reinforcement stripes is also available.

Colours RollTex®:

as standard: blue (RAL 5002)

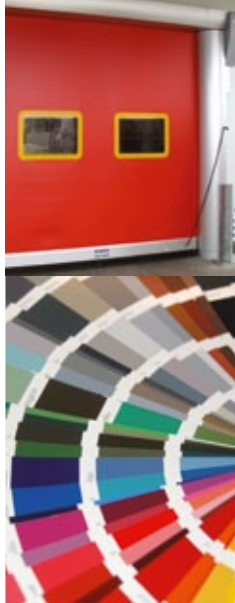
Optionally: orange (RAL 2009) or grey (RAL 7001)

Colours NormaTex®: orange (RAL 2009), blue (RAL 5005), grey (RAL 7038), yellow (RAL 1023), red (RAL 3000)

Colours of the reinforcement stripes:

as standard: blue (RAL 5002)

Optionally: red (RAL 3002), beige (RAL 1014), yellow (RAL 1021), orange (RAL 2011), green (RAL 6018), white (RAL 9016), grey (RAL 7035)



SAFETY FEATURES

The door is equipped with a door line photocell. A pre-running photocell, an electrical safety contact edge and integrated IR detector (up to DH = 3800 mm) in the top roll cover can be chosen.

BOTTOM PROFILE

Bottom profile in anodised aluminium.

Sealing bellows for better sealing of unlevelled floors (option for BASE configuration, standard for configuration ULTRA)





TOP ROLL COVER

Top roll cover is not a standard door feature.
Optionally a top roll cover made of aluminum is available.

MOTOR COVER

The motor cover is not a standard door feature.
Optionally a motor cover made of painted steel is available.



MOTOR POSITION

Available left or right hand side.

CONTROL UNIT

Frequency converter control system MCC^{VectorControl} with Vector Control technology to ensure smooth and dynamic motion. Control box mounted close to the motor. Display unit with foil keys and a graphical display is integrated in the side frame.



RELEASE HANDLE

Release handle operated from the floor.

BOTTOM BEAM STOPPER

Option on doors with windclass 3.

KNOCK-OUT CAPABILITY

A self repairing knock-out capability is available as option.

ACTUATORS

Individual applications can include additional safety devices. Actuators such as infrared, radar detectors, push buttons, vehicle detector loops or radio transmitters can be added to the control system. Please contact us for additional information for your specific needs.

High performance door RapidRoll® 600

ADVANTAGES OF ALBANY RAPIDROLL® 600:

- Modular design concept enables the door to be custom configured for a variety of applications
- Opening speeds depending on the size up to 2,0/3,2 m/s
- MCC^{VectorControl} System is flexible, modular and programmable
- Advanced safety features reduce the chance of harm to people, product and equipment
- Balancing and tensioning system provides smooth operation and controls door movement by adding constant tension to the door curtain
- Contoured design integrates style and technology for a bold modern look
- wind rating up to class 3 - EN 12424
- Door curtain made of extremely durable and tear resistant RollTex® fabric, including a 5 year warranty, available as option
- to separate rooms and environments in interior positions
- saving energy and avoiding air drafts
- as an exterior door for demanding outside conditions

DESIGN

Side frames made of anodised aluminium on both sides of the curtain guide its upward and downward motion. The front segment of the side frame is equipped with a hinge system. This simple system assures quick and easy access for maintenance and service. A top roll cover made of anodised aluminium protects the top roll. A counterbalance tensioning system provides smooth operation.

DOOR CURTAIN

Depending on application, the door curtain can be chosen from extremely rigid, tear resistant RollTex® fabric. The coated fabric seals against moisture and drafts. Standard colours are blue, orange and grey. Other options, like a curtain made of clear PVC with coloured reinforcement stripes or NomaTex® without or with windows or vision panels are available.

COUNTERBALANCE, CURTAIN TENSION SYSTEM

The counterbalance system is achieved by means of tension springs. Additionally, the combined curtain tension system assures a firm and taut curtain regardless of high wind loads.

DRIVE UNIT

3 phase brake motor and hollow shaft gearbox mounted directly on the top roll shaft. The drive has a flexible connection to the side frame by a torque arm. A pulse encoder provides the control system with information about the door curtain movement direction, speed and position. Drive unit position can be chosen right or left side.

CONTROL SYSTEM

Innovative frequency converter control system type MCC^{VectorControl}. Integrated design: Control system mounted at the side frame close to the motor. Graphical user interface with control buttons integrated in the side frame. Please refer to technical data.

MANUAL ACTIVATION

In the event of a power outage the manual release handle enables the door to be opened easily. The springs of the balancing system and the door partially opens automatically.

SAFETY

The door is equipped with an electric self testing safety edge or a patented pre-running photocell, detecting people or objects, reversing the door before contact. The door is also supplied with an integrated door line photocell and as option an integrated IR detector (up to DH = 3800 mm) in the top roll cover can be chosen.

SAFETY FEATURE

The door is designed according to the Workplace Directive of the UVV regulations and the harmonized CE Guidelines including the EN 13241-1.

INDICATION OF RISK

The security of the door is designed for normal use and for vehicles in an industrial environment corresponding to the harmonized CE-Guidelines. In consideration of the on site situation – especially in case of pedestrian use – additional safety measures, such as additional actuators may be required. In addition, special environmental conditions may impact the choice of door type. For more information or to schedule an on-site inspection, please contact our sales engineer.

TECHNICAL DATA

The RapidRoll® 600 is based on a completely modular system. The table below shows the specification of two basic configurations that can be widely modified to any application.

	BASE configuration	ULTRA configuration
Interior door	suitable	suitable
Exterior door	–	suitable
Wind resistance (EN 12424)	class 1	class 2/3
Mounting position	inside or outside	
Door dimension (mm) (DW min./max.) (DH min./max.)	For details please note general drawing! 1500 / 6000 mm 2000 / 6000 mm	
Opening direction	vertical	
Surface		
Side frames	anodised aluminium	
Bottom profile	anodised aluminium	
Top roll	painted steel	
Covers (optional)		
Cable drum covers	• ¹⁾	• ¹⁾
Top roll cover	• ¹⁾	• ¹⁾
Motor cover (Painted steel)	• ¹⁾	• ¹⁾
Door curtain		
PVC with coloured reinforcement stripes	✓	•
PVC with coloured silicon free stripes	•	•
RollTex® Original*	•	✓
RollTex® Plus*	•	•
NomaTex® */**	•	•
* optional with windows	•	•
** optional with vision panels	•	•
Wind tabs	–	✓
Curtain tension	✓	✓
Counterbalance	✓	✓
Control system / Drive unit		
Drive unit	electrical	electrical
Control system	MCC ^{VectorControl}	MCC ^{VectorControl}
Safety		
Pre-running safety photocell	•	•
Electrical safety contact edge	✓	✓
Door line photocell	✓	✓
Fall down protection (by tension springs)	✓	✓
Knock-out capabilities Self Repairing Door (SRD) (only electrical safety contact edge) With automatic reset (only Pre-running safety photocell)	• •	– •
Self opening, partly	✓	✓
Manual activation (with bowden lever operated from the floor)	✓	✓
Sealing bellows on bottom profile	•	✓
Top roll sealing	•	✓
Bottom beam stopper	•	✓
Brush sealing between side frame / curtain (not with Pre-running safety photocell)	•	✓
Speed (m/s)		
Open/close up to max.	2,0 (3,2) ²⁾ /1,2	2,0(3,2) ²⁾ /1,2
Fuse protection	10 A ³⁾	10 A ³⁾
Control voltage	24 V DC	24 V DC
Protection degree	IP 55	IP 55
Motor power kW	1,1 kW	1,1 kW
3L(N)/PE 380/400/415/440/480 V; 50/60 Hz	✓ ⁴⁾	✓ ⁴⁾
Additional opening height	•	•
Potential free contacts max. 250 V	•	•
Traffic light function		
Without direction detection	✓ 24 V DC	✓ 24 V DC
With direction detection	✓ 24 V DC	✓ 24 V DC
Flashing alarm light	✓ 24 V DC	✓ 24 V DC
Error message	✓ plain text	✓ plain text

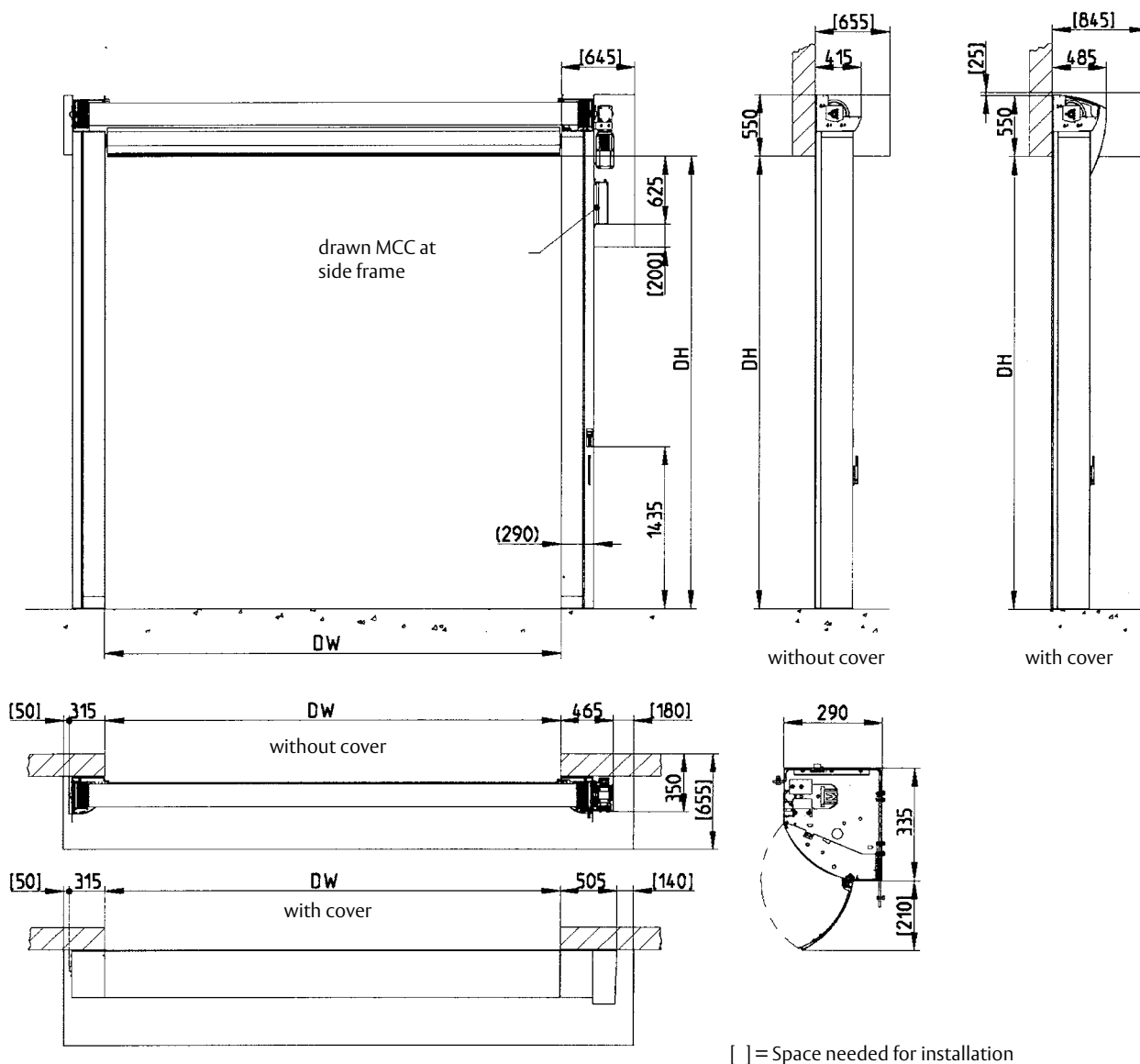
- Option
- ✓ Standard
- not possible

¹⁾ For doors with DH < 2300 mm cable drum-, top roll- and motor cover are required according to the standard EN 13241-1.

²⁾ Speed: depending on different spring systems

³⁾ 10 A preferable, 16 A maximal

⁴⁾ Transformer necessary for 220/230/500 V



Spring system		A	B
Opening speed	max. (m/s)	3,2	2,0
Closing speed	max. (m/s)	1,2	1,2

Availables sizes		B	H	Area
	min.	1500	2000	3 m ²
	max. **	6000	6000	36 m ²
** with SRD (Self Repairing Door)	max.	5000	5000	22 m ²
** with NomaTex	max.	5000	6000	20 m ²

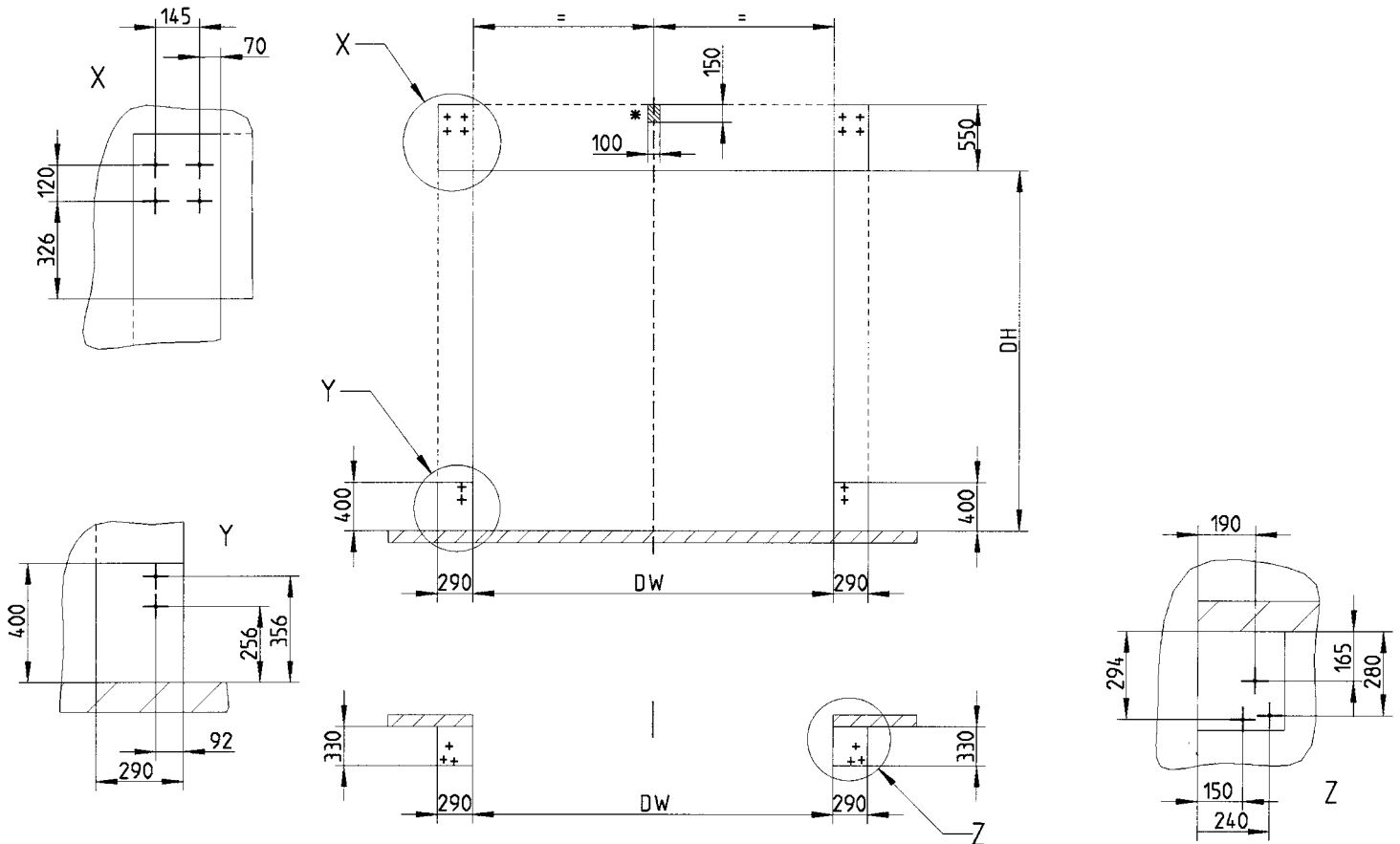
In this drawing the door is installed on the right side of the door. Doors with drive unit on the left side are also possible.

In case the installation space differs from our specification please contact us for a detailed clarification.

ASSA ABLOY Entrance Systems is a leading supplier of entrance automation solutions for efficient flow of goods and people. With our worldwide presence we offer products and services dedicated to satisfying end-user needs for safe, secure, convenient and sustainable operations. ASSA ABLOY Entrance Systems is a division within ASSA ABLOY.

www.assaabloyentrance.com

Fixing plan RapidRoll® 600



* Support middle at doors with width > 3500 mm

Inspect the install location concerning the required anchoring points and set-up conditions. It may be necessary to prepare a support construction or other suitable anchoring possibilities. The head plates should be bolted to a steel support construction or to a concrete element.

Attention! Check isolated panel walls, rider brick, and lightweight construction walls to ensure that they are suitable for the installation.

Fixing points in the lower vertical area are only needed, if the door can not be fixed on the floor.

Drawing-No: 8300R0024/0
Date: 08.02.2008

ASSA ABLOY Entrance Systems
Albany Door Systems

www.albanydoors.com

QR-Code

Get further information by scanning the QR-code with your smartphone and an appropriate application.

