

SAT/SUN

BRUNCH

11AM-3PM

THE SWEET SIDE

WAFFLES! WAFFLES!

Home Style... 10

Chocolate Chip... 12

Bacon-Infused... 13

CHICKEN 'N WAFFLES

Turn any of the above waffles into "Chicken & Waffles" for \$5 extra

FRENCH TOAST

Thick slices of French Toast with powdered sugar, house-made berry compote and choice of meat: **bacon, ham, sausage or veggie sausage**... 12.5

SASSY BRUNCH BURGER

Topped with bacon, jack cheese and a fried egg, then drizzled with Mary's "Sassy Sauce" (a sweet'n spicy brown sugar glaze)... 18

OMELETTES

Served with breakfast potatoes

MILE-HIGH OMELETTE

Eggs, ham, onion, bell pepper & cheddar cheese... 13

BIG D OMELETTE

AKA: "Mary's Kitchen Sink!"

Ham, sausage, bacon, bell peppers, onions, mushrooms, cheddar & jack cheeses... 18

THIS 'N THAT

MONTE CRISTO

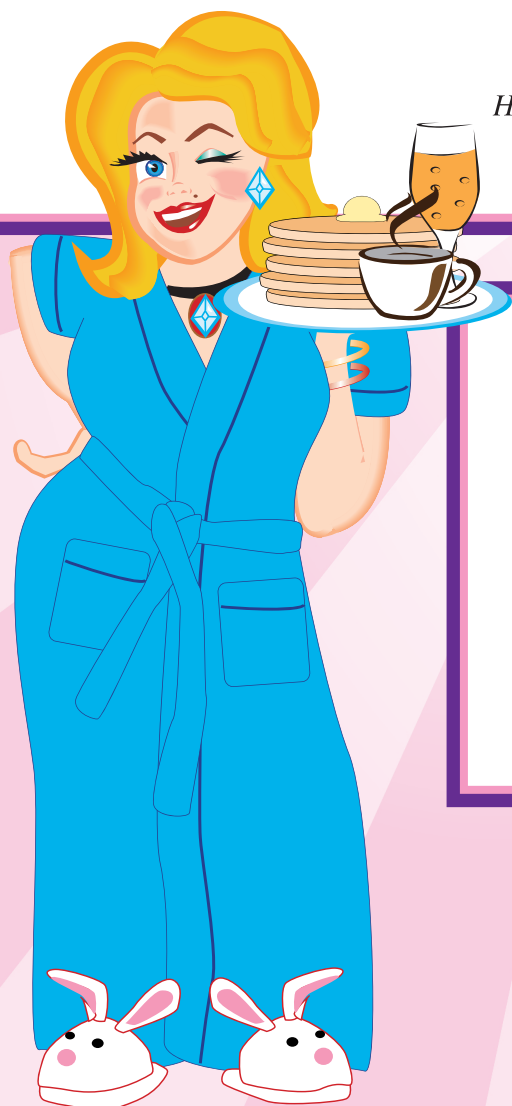
A sweet & savory delight! Sliced ham, Jack cheese & apricot preserves between two slices of French Toast. Served with breakfast potatoes or fries... 12.5

B'FAST BURRITO

Choice of meat (**bacon, ham, sausage or veggie sausage**), bell pepper, onion, cheese and eggs. Served with breakfast potatoes, salsa & sour cream... 13

BRUNCH PLATTER

2 farm-fresh eggs how you like em, with choice of meat (**bacon, ham, sausage or veggie sausage**). Served with toast & breakfast potatoes... 14



BRUNCHY BEVIES

BLOODY MARYS

MARY'S OG-BM

Made with our kickass Bloody Mary mix... 7

UNA PINCHE MARIA

Mary's Bloody Mary made with tequila... 7

BUBBLES!

MIMOSA

Glass... 7 / Tower... 30

FRUITY BELLINI

Bubbly with your choice: **Peach, Mango, Strawberry or Raspberry**. Glass... 7 / Fishbowl... 20



View
Menu
Online