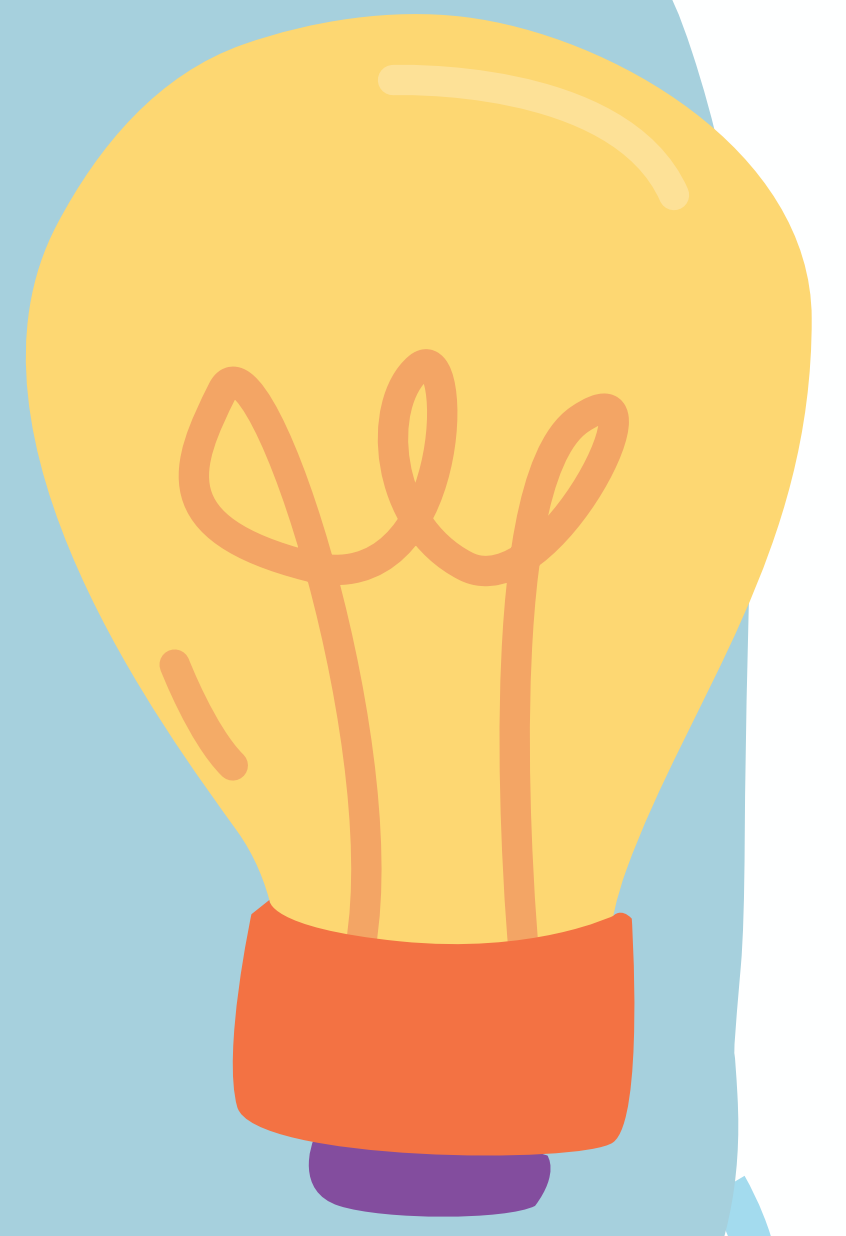


Language difficulties are no barrier: PROM(s) yield reliable results

MyCommunication-Adults

...measures **Communicative Participation**: "Taking part in life situations where knowledge, information, ideas or feelings are exchanged" (Eadie et al., 2006)



133 items were deemed relevant, comprehensible, and comprehensive

Adapt your PROM

- **Font:** Verdana, size 12
- **Language level:** Basic English proficiency
- **Layout:** One item per page
- **Item phrasing:** Use concise and clear sentences

Psychometric properties

42 items remained in the item bank after IRT analyses, and two short forms were developed:

- Unemployed adults (SF9)
- Employed adults (SFw10)

MyCommunication-Adults was administered to **500** individuals with **communication problems**

- **Language: 175**
- **Voice: 100**
- **Speech: 141**
- **Hearing: 255**
- **Other: 100**

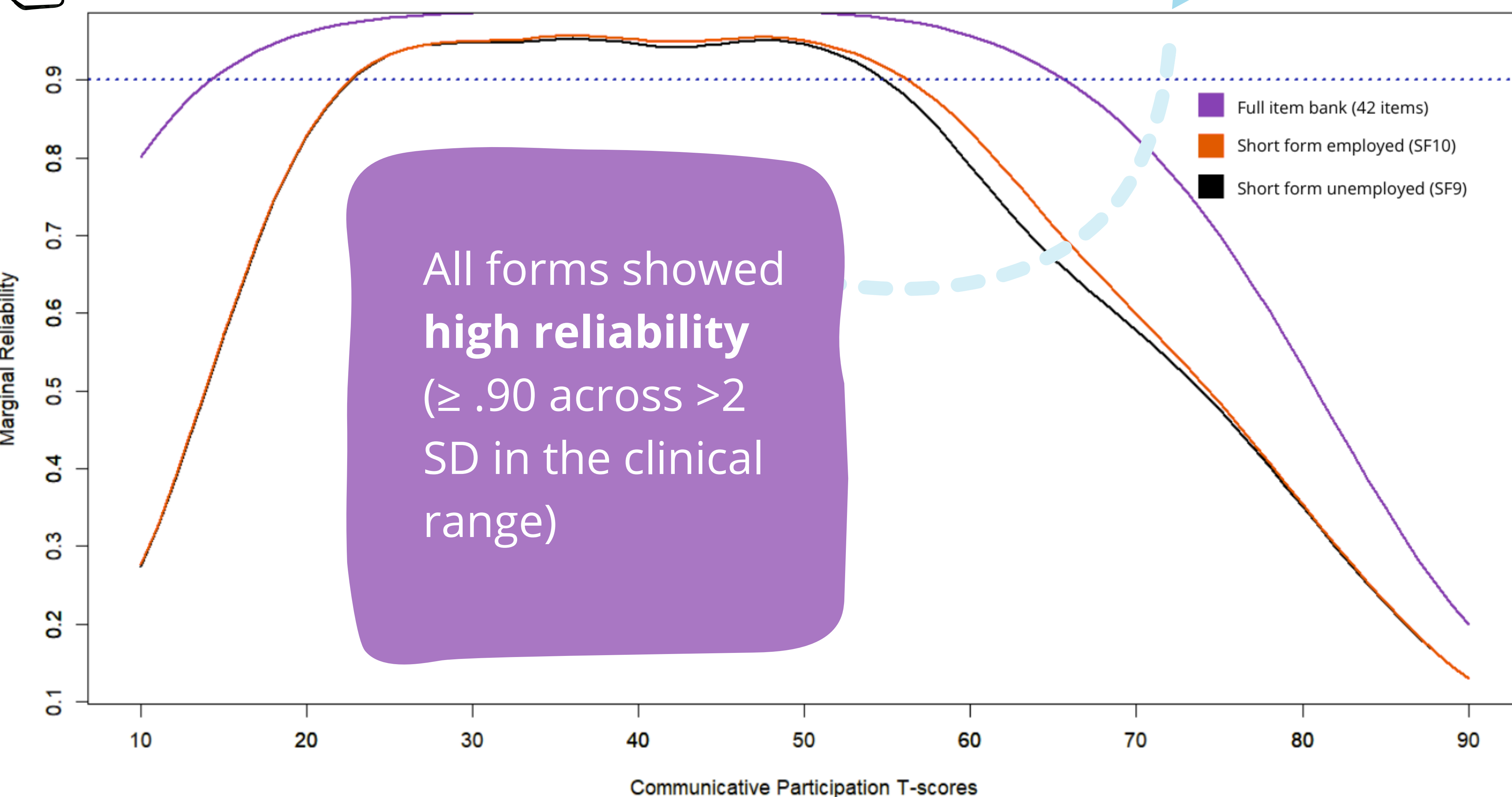
Sufficient structural validity

- CFI = .992, TLI = .991,
- OmegaH = .92, ECV = .80

Sufficient construct validity

CPIB short form: $r=.85$
PROMIS-APS: $r=.57$

All forms showed **high reliability** ($\geq .90$ across >2 SD in the clinical range)



Nicole ter Wal^{ab}, Lizet van Ewijk^a, Eline Alons^{ab}, Benjamin D. Schalet^c, Johanna M.A. Visser-Meily^{de}, Ellen Gerrits^{ab}, Caroline B. Terwee^c

^a Research Centre Healthy and Sustainable Living, HU University of Applied Sciences Utrecht, the Netherlands, ^b Department of Languages, Literature and Communication, Utrecht Institute of Linguistics OTS, Utrecht University, the Netherlands, ^c Department of Epidemiology and Data Science, Amsterdam Public Health research institute, Amsterdam UMC, Vrije Universiteit Amsterdam, the Netherlands, ^d Department of Rehabilitation, Physical Therapy Science & Sports, UMC Utrecht Brain Centre, University Medical Centre Utrecht, the Netherlands, ^e Centre of Excellence for Rehabilitation Medicine, UMC Utrecht Brain Centre, University Medical Centre Utrecht and Utrecht University, and De Hoogstraat Rehabilitation, Utrecht, the Netherlands