



Learning Platform for Nursing



The UWorld Difference

“

One word...amazing. Easy to use for the students and faculty. Great program resource.”

Karolyn Fox, MSN, RN-BC, CCRN-K
Belmont College

“

A must-have to help prepare graduating students for success in taking the NCLEX.”

Jennifer Sanderson, PhD, RN, CCRN-K
Central Texas College

“

Excellent resource! Similarity to the NCLEX, realistic, great rationales, Great resource for nursing programs and pre-licensure nurses.”

Cheryl Armstrong, DNP, MS, RN
University of Utah

Welcome to UWorld Nursing

A Letter From Our Director

Thank you for your interest in UWorld. Our mission is to build superior testing and evidence-based nursing education products that build strong critical thinking and clinical reasoning skills while helping students and professionals reach their full potential.

Our Learning Platform for Nursing — an innovate teaching and learning tool, complete with new Next Generation questions — gives instructors and administrators the ability to create custom assignments, present in the classroom to supplement curriculum, and monitor student or cohort performance at every step of the learning process.

Students have long recognized UWorld as the gold standard for exam preparation — that’s why nearly one million nursing students have used our products for their NCLEX prep since UWorld Nursing launched in 2015.

Now, with our Learning Platform for Nursing and the integration of Next Gen NCLEX questions, programs like yours can take advantage of our assignable QBanks and industry-leading rationales for instruction and remediation to deepen your students’ knowledge and build their clinical reasoning skills throughout your curriculum.

I invite you to explore our products to see why students are increasingly asking their nursing program to offer UWorld as a learning tool and a preparation resource for NCLEX success. We hope to partner with you to create the next generation of nurses who are confidently prepared to meet the needs of the ever-changing healthcare landscape.

Sincerely,



Karen Sutherland, PhD, RN
Director of Nursing Education

Assignable Questions

Thousands of Challenging Questions Build Clinical Judgment Skills

With thousands of clinically-relevant questions (both traditional items and NGN®) and educationally-rich rationales to choose from, you can now assign UWorld content to develop your nursing students' knowledge and skills.

NCLEX-RN Practice Questions plus over 1,000 exclusively for faculty!

- 2,000+ application-level questions keep your students on track for NCLEX success
- Dedicated Faculty QBank contains 1,000+ unique questions that can only be accessed when assigned
- Flexible assignment settings enable you to easily use questions for homework or assessment

Next Generation Case Studies and Stand-alone Items

- Present case studies and stand-alone items during class for instruction or discussion
- Conveniently create assignments using Next Gen questions, traditional items, or a mix of both
- Utilize enhanced reporting for the clinical judgment measurement model for remediation

Bonus! 300+ dosage calculation questions from our Clinical Med Math QBank

- Concepts cover a full range of medication categories
- Dimensional analysis approach emphasized to reduce errors
- Questions organized by difficulty level to align to your nursing curriculum

NCLEX-RN TEST Time Remaining: 00:00:00 Question 1 of 1

Notes Calculator Feedback

A new graduate nurse is providing discharge instructions to a client with stable angina who was prescribed sublingual nitroglycerin. Which statement by the new nurse would cause the precepting nurse to intervene?

1. "Call emergency medical services if symptoms persist after 3 doses."
2. "Nitroglycerin can be taken prophylactically before stressful activities."
3. "Sit or lie down when taking a tablet of sublingual nitroglycerin."
4. "Tablets should cause a tingling sensation under the tongue."

Correct 72% Answered correctly 58 secs Time Spent 09/20/2021 Last Updated

End Resources Suspend Previous Navigation Next

Explanation

Myocardial infarction & ischemia

Lack of blood flow creates an ischemic region of myocardium (pericardium) & leads to tissue death.

Coronary arteries deliver oxygenated blood to the cardiac muscle (ie, myocardium). In **coronary artery disease**, atherosclerosis (ie, plaque buildup) **narrows** the coronary arteries. Typical angina (ie, **chest pain**) and/or radiating pain (eg, to the jaw and/or arm) indicates that the arteries are blocked or too narrow for the flow of adequate blood supply (ie, ischemia). **Myocardial ischemia** can progress to myocardial infarction.

NCLEX-RN TEST Time 00:01:07 Question 2 of 6

Notes Calculator Feedback

The nurse is caring for a 20-year-old female client.

Nurses' Notes

Emergency Department

0845: The parent brought the client to the hospital after finding the client in the bathroom vomiting and unable to stand without assistance. The client states that she has experienced sore throat and nasal congestion for the past week. She reports 4 episodes of emesis during the past 24 hours and abdominal pain that is diffuse, constant, non-radiating, and rated 3 on a scale of 0-10. The client also reports polydipsia and polyuria over the past 2 months. The last menstrual period ended approximately 6 weeks ago with no abnormalities. Pregnancy status is unknown. The client is taking no medications, and she reports no smoking, alcohol, or recreational drug use. Family history includes hypertension and diabetes mellitus. The client appears drowsy and is oriented to person and time only. The abdomen is soft without guarding, rigidity, or rebound tenderness, and bowel sounds are normal. No blood is present in emesis. Respirations are rapid and deep. Breath sounds are clear. Vital signs are T 98.8 F (37.1 C), P 128, RR 30, and BP 88/60 mm Hg. Finger-stick blood glucose level is 600 mg/dL (33.3 mmol/L).

Finding	Diabetic ketoacidosis	Ruptured appendix	Ruptured ectopic pregnancy
Polyuria	<input type="checkbox"/>	<input type="checkbox"/>	<input type="checkbox"/>
Vomiting	<input type="checkbox"/>	<input type="checkbox"/>	<input type="checkbox"/>
Tachypnea	<input type="checkbox"/>	<input type="checkbox"/>	<input type="checkbox"/>
Tachycardia	<input type="checkbox"/>	<input type="checkbox"/>	<input type="checkbox"/>
Hyperglycemia	<input type="checkbox"/>	<input type="checkbox"/>	<input type="checkbox"/>
Abdominal pain	<input type="checkbox"/>	<input type="checkbox"/>	<input type="checkbox"/>

Note: Each column must have at least one response option selected.

Submit

CLINICAL MED MATH TEST

Notes Calculator Feedback

Exhibit

The nurse is caring for a pediatric client who is prescribed IV naloxone for opioid-related pruritus. At what rate in milliliters per hour (mL/hr) should the nurse initiate the diluted naloxone solution? Click the exhibit button for additional information. Record your answer using one decimal place.

Answer: _____ (mL/hr)

Correct 46% Answered correctly 01 min, 19 sec Time Spent 12/09/2021 Last Updated

End Resources Suspend Previous Navigation Next

1. k
p
2. k
Dilution instructions: infusion bag – medication volume + medication
OR
500 mL NS – 2 mL NS + 2 mL NAL = 500 mL diluted NAL or $\frac{2 \text{ mg NAL}}{500 \text{ mL}}$
3. Convert the prescription to the infusion rate of NAL in milliliters per hour
Prescription x diluted medication = $\frac{\text{mL NAL}}{\text{hr}}$
OR
 $\left(\frac{\text{mg NAL}}{\text{kg/hr}}\right) \left(\frac{\text{kg}}{\text{lb}}\right) \left(\frac{\text{mg}}{\text{mg}}\right) \left(\frac{\text{mL NAL}}{\text{mg NAL}}\right) = \frac{\text{mL NAL}}{\text{hr}}$
OR
 $\left(\frac{2 \text{ mg NAL}}{\text{kg/hr}}\right) \left(\frac{\text{kg}}{2.2 \text{ lb}}\right) \left(\frac{\text{mg}}{1000 \text{ mcg}}\right) \left(\frac{500 \text{ mL}}{2 \text{ mg NAL}}\right) = \frac{13.1818 \text{ mL NAL}}{\text{hr}}$
4. Round to one decimal place
 $\frac{13.1818 \text{ mL NAL}}{\text{hr}} \approx \frac{13.2 \text{ mL NAL}}{\text{hr}}$
Educational objective:
To calculate the infusion rate of naloxone diluted in normal saline, the nurse should first identify the prescribed dose (eg, 2 mg/kg/hr), available medication (eg, 2 mg/2 mL), and diluted volume (eg, 2 mg/500 mL) and then convert to milliliters per hour (eg, 13.2 mL/hr).

Presentation Tools

Unparalleled Rationales To Develop Clinical Judgment

Reinforce learning and increase student engagement using questions from the QBank as part of any classroom presentation. Simply select questions you want to use and save them in your presentation library.

Clinically-Relevant Content

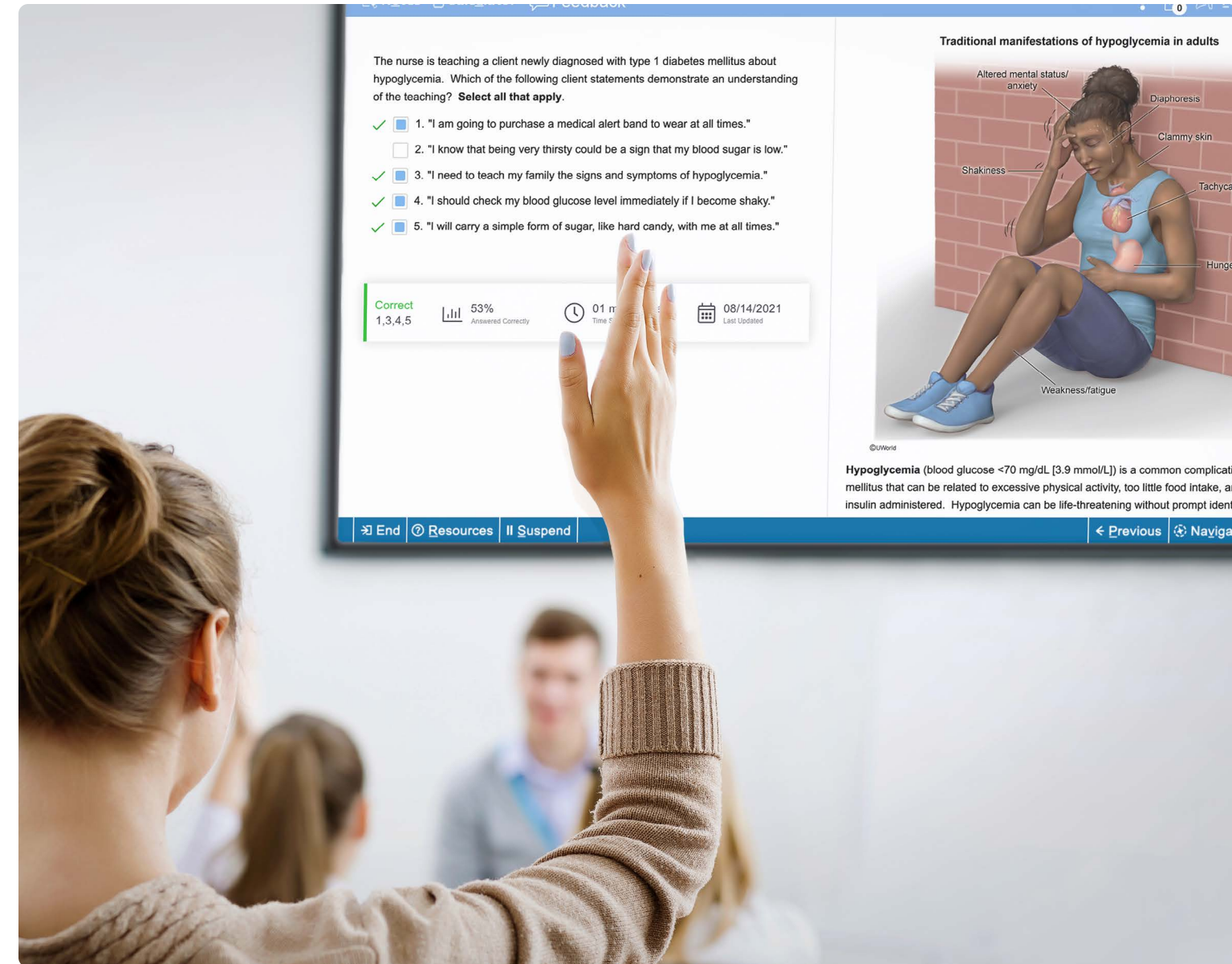
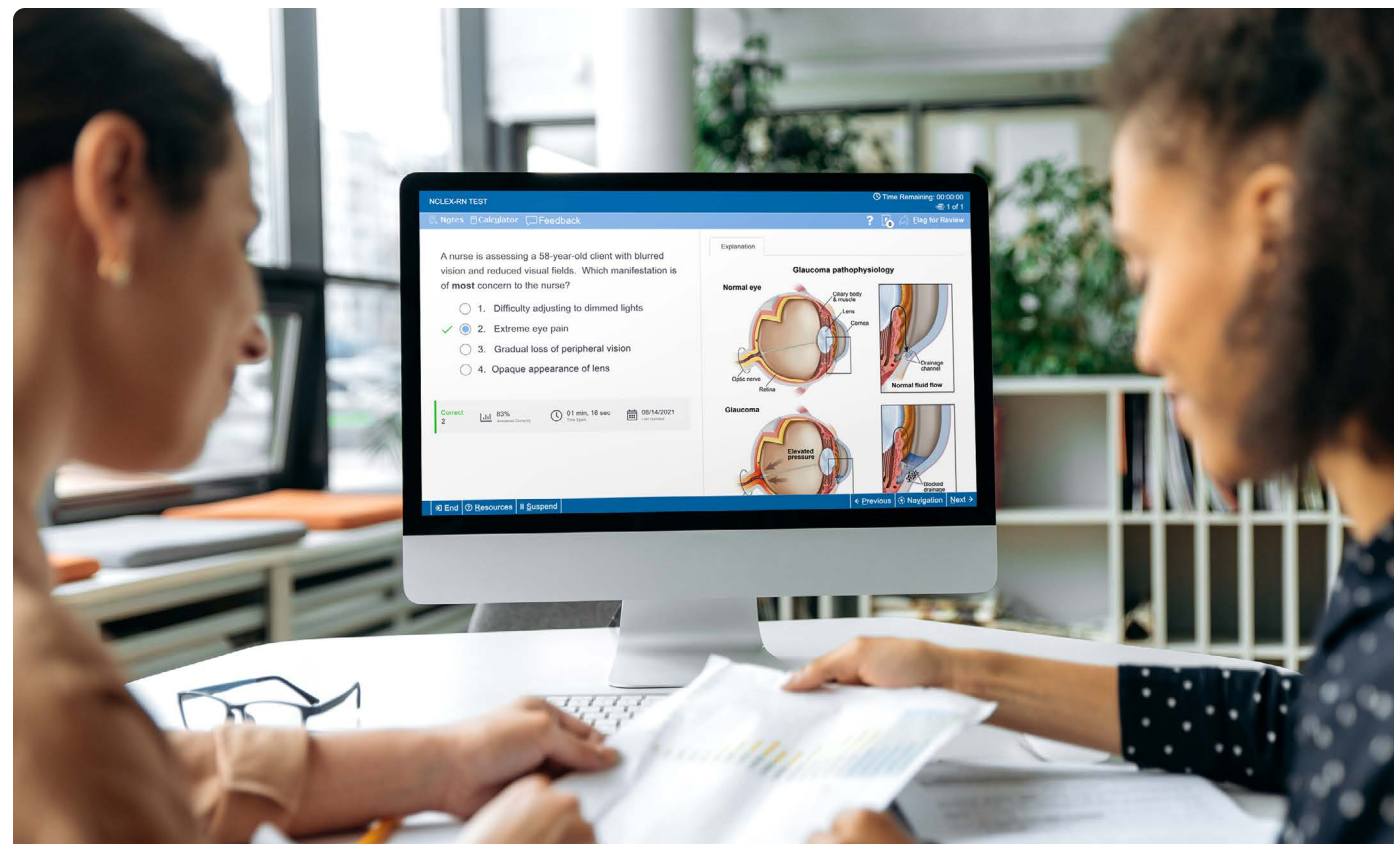
Developed by experienced nurse educators and practicing nurses, our QBanks combine the best of nursing knowledge with the real world of clinical practice to ensure your students are prepared for the exam and the bedside.

Detailed Rationales

Strengthen your students' clinical judgment skills using our detailed rationales for correct and incorrect answers. All incorrect answer choices include plausible distractors to deepen students' understanding of each concept.

Vivid Imagery

Enhance your lectures with vivid images, illustrations, charts, and graphs created by our in-house team of specialized medical illustrators.



“

An excellent NCLEX prep product, with the best rationales and medical illustrations on the market.”

Charlene Douglas, PhD, MPH, RN, CPH
George Mason University

Performance and Improvement Tracking

Stay Informed as to Student, Group, and Cohort Progress

Dashboard

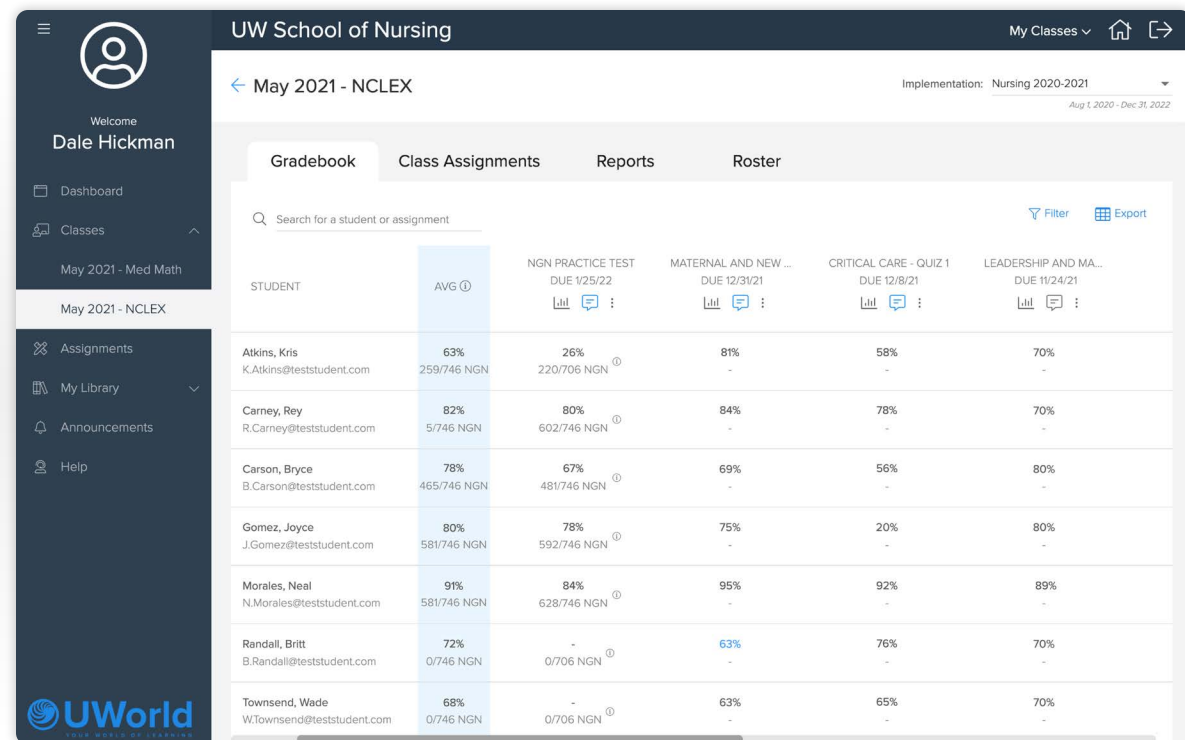
Quickly and easily manage your classes, assignments, presentations, and administration tools from one simple dashboard.

Gradebook

Results of your assignments will automatically populate the gradebook, enabling you to spend more teaching and less time troubleshooting. Dynamic features enable you to see a student's average score across all assignments or drill down to specific scores on particular assignments.

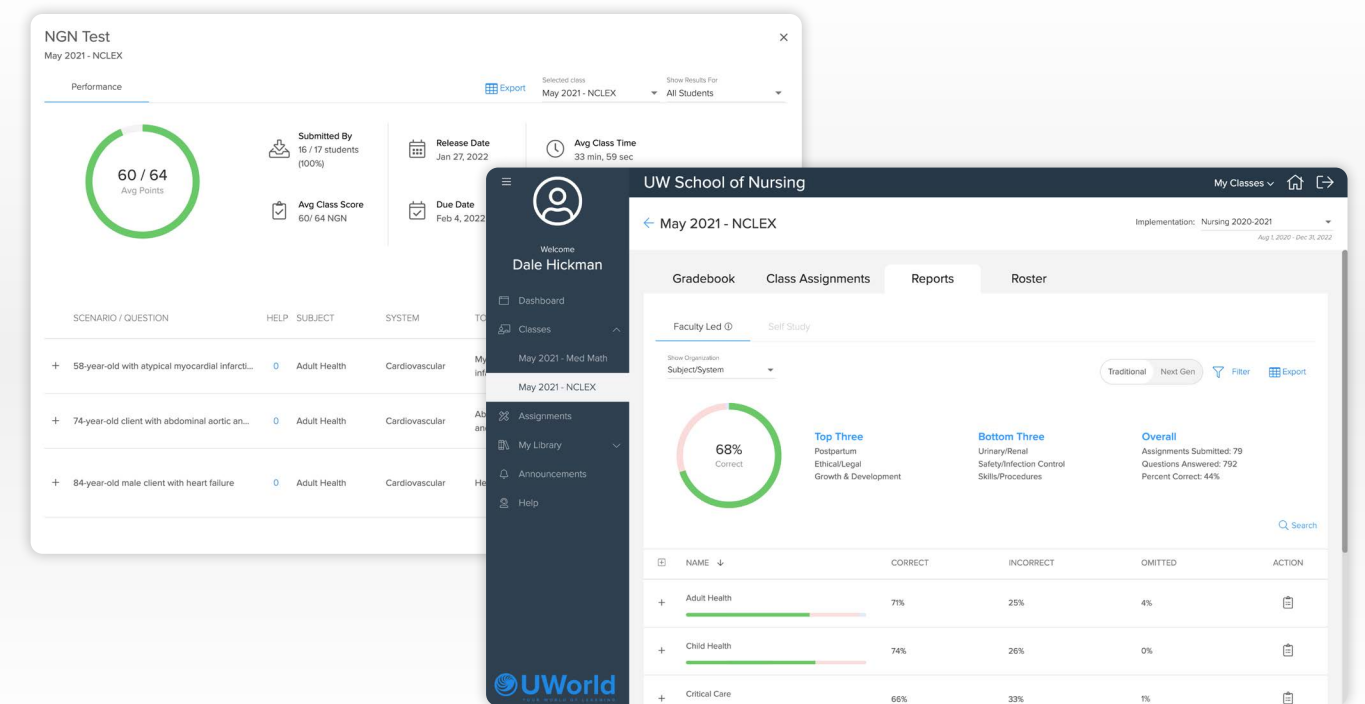
Reporting

Detailed reports enable you to filter student, group, and cohort performance by subject/system, client needs area, or concept.



Improve Student Outcomes With Targeted Remediation

Precise and User-Friendly Reporting that Identifies Learning Gaps



Visual Summaries

Get a high-level overview of cohort performance with visual summaries. Easily toggle between traditional and Next Gen questions or drill into specific subjects and systems to gather more detailed information, including the most understood and least understood concepts.

Assign Targeted Remediation

Promptly identify at-risk students and assign individuals, groups, or the entire class the appropriate questions for remediation.

Monitor NCLEX-Readiness With Simple Reporting Tools

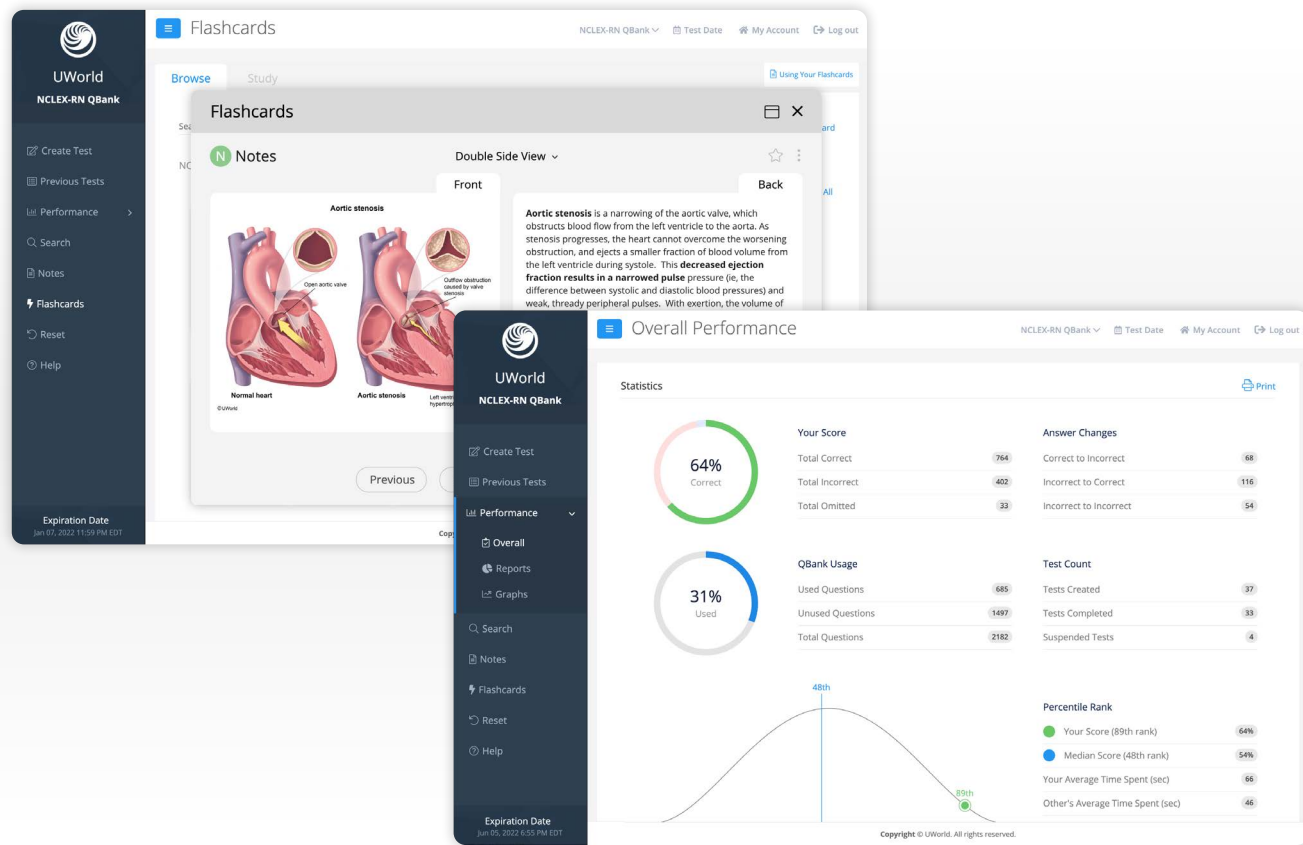
Easily switch between faculty-led reporting (which includes all assignments created by faculty) and self-study reporting (which includes results of students' personalized tests) to identify gaps or recognize progress in the learning journey.

Compare Cohorts

Gather program insights and decision-making data by comparing QBank activity, scores, and progress among cohorts.

Self-Study QBank

Empower your students to continue learning on their own with access to the student NCLEX-RN QBank. You decide when to activate their access to the Self-Study QBank, ensuring they make the most of their resources and are prepared for exam success.



Personalized Practice Tests

Enable your students to practice thousands of NCLEX-style questions over and over again in exam-like conditions, so when they sit down on test day, the actual exam will feel like practice.

Customizable Flashcards

Innovative study tools keep students focused on content they haven't yet mastered, making individual study sessions more personalized and effective.

Individual Performance Metrics

Monitor students' progress in the self-study QBank with simple reporting tools, ensuring additional insight into students' exam readiness.

Customized Service and Support

Spend more time teaching and less time troubleshooting. Our dedicated Support Team will be with you every step of the way, providing personalized product training and implementation support to help align UWorld content with your program goals.



Technical Account Manager

Get all your questions answered! Your technical account manager will work with you to develop an implementation plan that includes onboarding, training, and support throughout the life of your adoption.



Nursing Faculty Consultants

Available upon request, our team of Nursing Faculty Consultants help fellow educators improve NCLEX pass rates by sharing ideas and best practices for using the QBank as a teaching and learning tool.



Support

Need help now? Faculty and students can contact lp_support@uworld.com for support.

To learn more

contact nursingsales@uworld.com or visit nursing.uworld.com/educators/learning-platform



nursing.uworld.com/educators/learning-platform

Copyright © 2022, UWorld, LLC. All rights reserved.

NCLEX®, NCLEX-RN®, NCLEX-PN®, are registered trademarks of the National Council of State Boards of Nursing, Inc (NCSBN®). The NCSBN® does not endorse, nor is it affiliated with, UWorld.