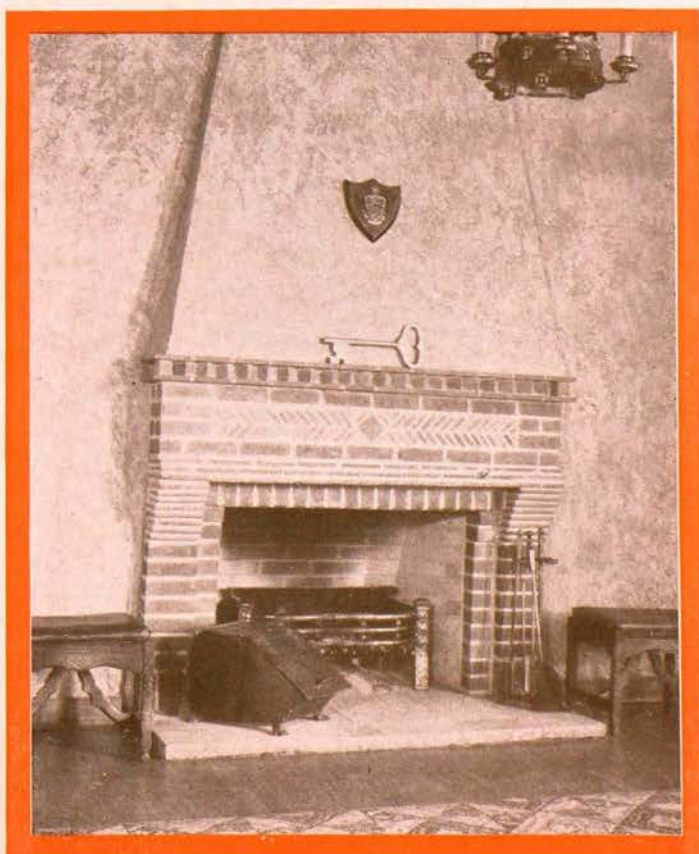


The Laurel
of ~ ~ ~ ~
Phi Kappa Tau

Autumn
Number
1 9 3 0



Fraternity Report Calendar

October 10	Laurel Copy due Editor September Financial Report List of Resident Council Officers
October 20	Membership Report
November 1	Treasurers' Bond Blank Budget Blank Resident Council Dues
November 10	Semester Report October Financial Report
December 10	November Financial Report Laurel Copy due Editor
January 10	December Financial Report
February 10	January Financial Report
March 1	Membership Report
March 10	February Financial Report Laurel Copy due Editor
March 15	Resident Council Dues
March 20	Semester Report
April 10	March Financial Report
April 20	Report of Convention Delegate
May 10	April Financial Report Convention Pool Check
May 15	List of Summer Addresses
June 1	Laurel Copy due Editor
June 10	May Financial Report
June 25	June Financial Report

All special reports required by Central Office twenty days after mailing.

Pledge certificates due five days after pledging.



The Laurel

of

Phi Kappa Tau

NOVEMBER, 1930

Volume XIX

Number 1

Editor JACK W. JAREO
1039 Currie St., Marinette, Wis.

Business Manager . . . RICHARD J. YOUNG
121 East High St., Oxford, Ohio

The exoteric publication of The Phi Kappa Tau Fraternity. Published prior to 1917 as "Sidelights." Scheduled to appear quarterly in the months of November, January, April, and July, under direction and authority of the Grand Chapter.

Entered as second class matter at the Post Office at Athens, Ohio.

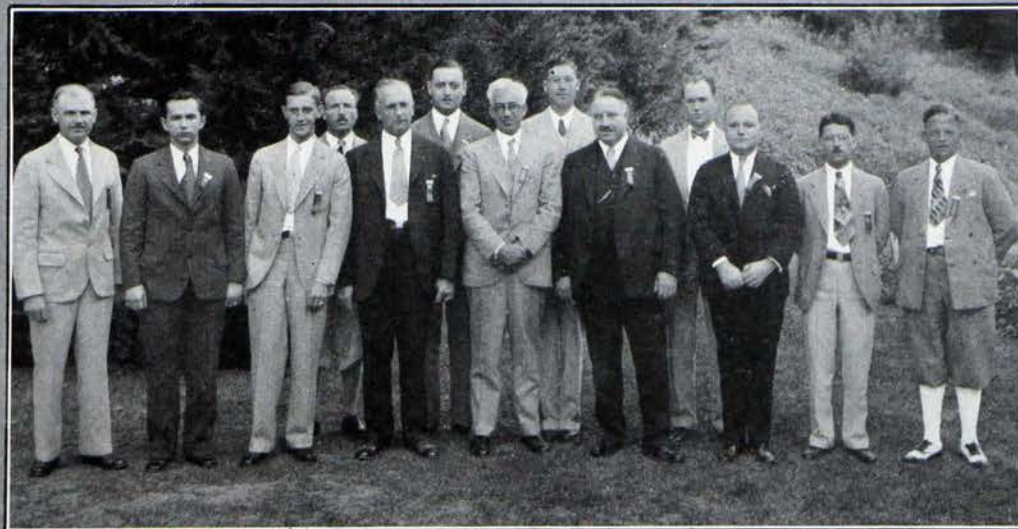
Acceptance for mailing at special rate of postage provided for in Section 1103, Act of October 3, 1917.

Published four times a year during the months of January, April, July and November by The Lawhead Press, 17 West Washington Street, Athens, Ohio, official printers for Phi Kappa Tau Fraternity.

Subscription price, \$2.00 per year.

Contents for November

Phi Kappa Tau Holds Convention.....	3
Plans Progress for Memorial.....	6
W. M. Foley Is Grand President.....	7
Rescue Fatal to Omega Man.....	8
Sidelights of Asheville Meeting.....	9
Dean Brandon Makes Report	10
Dr. Wright Speaks on Building.....	13
Alpha Constructing New Home.....	15
E. T. Boles Talks on Fraternity History..	16
Presenting Chapter Advisers.....	18
Phi Kappa Tau In Foreign Countries.....	23
Tells of Tour Experiences.....	25
Absent Chapter	27
Phi Kappa Tau Pictorial.....	33
Phi Kappa Tau Pictorial	32
Among the Greeks.....	36
The Chapters	37
Graduate Council News.....	53
Fraternity Directory	56
Chapter Directory	57



UPPER GROUP: CONVENTION PICTURE.
LOWER GROUP: PRESENT AND PAST GRAND OFFICERS AT CONVENTION.

THE LAUREL

Volume XIX



Number 1

NOVEMBER, 1930

Phi Kappa Tau Holds Convention

Twentieth Annual Meeting Held At Grove Park Inn Was Pronounced Success; New Officers Elected; Statutes Passed

MAKING the most of the hospitality offered by the world-famous Grove Park Inn at Asheville, N. C., members of Phi Kappa Tau gathered for one of the most successful conventions in the history of the fraternity during three never-to-be-forgotten days of August 28, 29 and 30.

One hundred six delegates, visitors, officers, and wives of members attended the Asheville gathering, which was opened on August 28 when Convention Chairman Paul T. Gantt called the gathering to order.

Following an invocation by Grand Councilor Harry Allen Taylor, Chairman Gantt called upon Hidden Ramsey, of the *Asheville Times*, who welcomed Phi Kappa Tau to Asheville and to the state of North Carolina. H. T. Miller, vice-president of the Grove Park Inn Company, extended to those at the fraternity convention the hospitality of the Inn.

Grand officer reports were made by the grand president, the grand secretary-

treasurer, the grand editor, and the first session ended with Resident Council delegates presenting reports of chapter conditions with respect to finance, scholarship and activities.

Among the significant achievements of the Twentieth Annual Convention was the selection of Oxford, Ohio, the birthplace of Phi Kappa Tau, as the location for the 1931 conclave, to be known as the Silver Jubilee Convention, in honor of the twenty-fifth anniversary of the founding of the fraternity. Hotel Huntington, Pasadena, California, was designated by the Grand Council as the location for the 1932 meeting at a date approximately at the immediate close of the Olympic Games.

The request of Phi Delta Sigma, a local group on the campus of Cornell University at Ithaca, N. Y., for a charter for a chapter in Phi Kappa Tau was unanimously granted, and it was voted to admit the local as Alpha Tau Chapter of the fraternity.

The second session of the convention

THE LAUREL OF PHI KAPPA TAU

was divided into two groups with the Resident Council and the Graduate Council delegates meeting in a separate group. In the Resident group, Moyer of Alpha Chapter presented a special topic entitled "Organized Rushing," followed by a discussion of "Hell Week" by Philby, Gamma. Following a discussion, overwhelming sentiment favored abolition of rough tactics.

Presided over by Grand Councilor Taylor, Upsilon, the Graduate Council session discussed many topics of vital interest to Graduate Council secretaries. Emphasis was placed upon the vital part the alumni play in the Phi Kappa Tau system. Of all college fraternities, Phi Kappa Tau is one of a few boasting an organization so unique and successful. Dr. Taylor elaborated upon the mutual relationship between the members of the two councils, which brings about a healthy fraternal situation. Discussion turned to collection of dues, news letters, alumni contacts, and a score of matters directly related to members of Graduate Councils.

In the Friday session, Past Grand Councilor Boles reported the decision of the Life Membership Committee, of which he and Dr. H. E. Hoagland, Zeta, were members. After consulting an actuary, the committee reported that the sum of \$25 paid by a member of a Graduate Council would constitute payment of national dues for life. The convention adopted the plan unanimously. This sum, however, was explained as not including any obligations to local Graduate Councils.

Grand Councilor Taylor, in the absence of Scholarship Commissioner

Brandon, read Dean Brandon's annual report, one of the most effective presentations of the subject in recent years. The entire report is given elsewhere in the present issue of THE LAUREL.

Grand Councilor Maxwell presented the report on the proposed Central Office Building and Memorial to the Founders of Phi Kappa Tau at Miami University, Oxford, Ohio. A motion was passed authorizing the Grand Council to proceed with purchase of an especially appropriate lot in Oxford and that further authority be granted the Grand Council to bring about the erection of a national headquarters building on that lot at a cost approximating \$25,000 or \$30,000. Philby, Gamma, suggested a plan whereby architects who are members of Phi Kappa Tau be permitted to submit sketches.

Recommendations following the report were acted upon by the Scholarship Committee, and upon presentation of the committee's report, a new scholarship statute was recommended and approved by the Grand Chapter relating to the suspension of members with low scholarship.

Upon a report of the nominating committee, election of officers followed. W. Massey Foley, Alpha; P. T. Gantt, Xi; and Jack W. Jareo, Omega; were unanimously elected to the offices of grand president, grand councilor and grand editor respectively.

The Convention banquet was held in the dining room of Grove Park Inn Friday evening with Donald Pearce, Nu, as toastmaster. Speakers of the evening were Grand Councilor Boles, Grand Secretary Young, Honored Founder Shide-



Scene Near Asheville in Western North Carolina

ler and Grand President Wright. Brief remarks were made by newly elected officers, Grand President Foley and Grand Councilor Gantt. A letter of regret that he was unable to attend convention from Honored Founder Clinton D. Boyd was read.

Those attending the banquet were favored with vocal selections by Mrs. Isaac Miles Wright, and included in the program was the announcement of the winners of prizes in many of the sport events which the entertainment committee had successfully conducted. Alpha Chapter at Miami University and Pi Chapter at the University of Southern California were announced as the winners of the Domain Chief cup, with the cup in possession of each chapter for half of the year

The final session of the convention was held Saturday morning at which time the convention heard the report of Phi Eta, given by Henry Rohr of Pi. The convention, standing for two minutes with heads bowed, honored the twenty-one members who died during the past year. At the close, Dr. Wright offered the prayer of the chaplain for the departed members.

Dr. Shideler made the report for the Committee on Finance. The report was approved by unanimous vote.

Honored Founder Shideler and Past Grand President Taylor were called upon by Grand President Wright to escort President-elect Foley to the chair, where he was installed as presiding officer for Phi Kappa Tau for the year 1930-31.

Plans Progressing For Founders' Memorial In Erection of Headquarters Building for National Offices at Oxford

By ROLAND MAXWELL

FOR a good many years Phi Kappa Tau has given consideration to the erection of a proper memorial for the founders of the fraternity. Many suggestions have been made with reference to the form which this memorial should take. With the removal of the Central Office to Oxford the idea of erecting a permanent National Headquarters Building as such a memorial was conceived, and ever since the time of the removal from Indianapolis the Grand Council has been giving consideration to the erection of such a National Headquarters Building.

When this plan was brought to the attention of Alpha Chapter an offer of sale of a lot owned by Alpha Chapter to the fraternity for this purpose was made. The convention directed the making of this purchase. This lot is in an exceptionally fine location in the city of Oxford. It is immediately adjacent to the Alpha Chapter house of Beta Theta Pi, and is directly across the street from the first Phi Kappa Tau Chapter house. Around the corner is situated the National Headquarters Building of Phi Delta Theta.

It is interesting to note that in carrying out its plan for the erection of a National Headquarters Building in Oxford, Phi Kappa Tau will join two other National fraternities, Phi Delta Theta and Beta Kappa. The 1930 convention instructed the Grand Council to proceed with the erection of a building upon this lot, when the purchase

has been consummated, costing in the neighborhood of \$25,000 to \$35,000. At the present time it is planned to build a two-story building with only the first floor completely finished, the second floor being held in reserve for future expansion.

It was suggested at the convention that it would be most desirable to have the building designed by a Phi Kappa Tau architect. For that reason the members of the fraternity are asked to bring this project to the attention of all members of the fraternity who are architects, with the request that they communicate with the Central Office if they are desirous of being chosen as the architect of the National Headquarters Building. The Grand Council will make a selection of the architect and it is sincerely hoped that it will be possible to choose a member of the fraternity.

If the building is not completed by the summer of 1931 when the National Convention will be held at Oxford it is hoped that the commencement of the project will be marked by proper ceremonies, either in the laying of the corner stone or in breaking ground for the construction.

The National Headquarters Building will not only meet in most adequate fashion all present or future needs for the National Office, but it will provide in an entirely fitting and suitable manner a permanent memorial to the founders of the fraternity.

W. M. Foley Is Grand President Paul T. Gantt Elected to Grand Council

TWO significant changes in personnel in the Grand Chapter took place at the Twentieth Annual Convention in the election of W. Massey Foley, Alpha Chapter, to succeed Dr. Isaac Miles Wright, Eta, as Grand President, and the election of Paul T. Gantt, Xi Chapter, to succeed E. T. Boles, Delta, as Grand Councilor. Dr. Wright capably occupied the office of Grand President for two years, while Boles completed this year his five-year term as Grand Councilor.

W. Massey Foley began his career in Phi Kappa Tau with his entrance to Miami University as a sophomore at which time he was pledged and initiated into the fraternity following a year of study at the University of Cincinnati as a freshman.

After leaving Miami in his junior year to spend fifteen months in the United States army, thirteen of which were spent in France as an interpreter,

Foley re-entered Miami to complete the work which remained for graduation. He was elected to Phi Beta Kappa and to Tau Kappa Alpha, and held several offices on the campus. He was a member of the Miami Glee Club for three years, and was graduated cum laude.

After leaving college Grand President Foley was sent to China by an American business concern, and has been in the financing business ever since his final return from that country in 1925, first as secretary and director of a Cincinnati company until the Fidelity Investment Company of Newark, N. J.,

began operations in 1927. Foley is a director and vice-president of that concern at the present time.

GANTT IS COUNCILOR

Paul T. Gantt, elected to the Grand Council, is domain chief of Domain XI, and is a member of Xi Chapter, graduating from Franklin and Marshall college



W. Massey Foley

in 1920. Gantt has had many year in service to Phi Kappa Tau, starting with the leadership of Xi Graduate Council in 1922. He was a delegate to the first West Baden convention in 1926, and was the chairman of the nominating committee at the second convention held at West Baden in 1928, the same year in which



Paul T. Gantt

he was appointed as domain chief. Grand Councilor Gantt served capably as convention chairman this year, besides fulfilling his duties as domain chief of the domain which includes Xi Chapter, Franklin and Marshall; Omicron Chapter at Penn State; and Alpha Iota at the University of Pennsylvania.

Gantt is connected with the public school system in Philadelphia.

Dr. James Naismith, the father of basketball, is a member of the Kansas chapter of Sigma Phi Epsilon.

Heroic Rescue Fatal to Tom O'Dea, Omega

By WALTER N. CRANE

■ An effort to save his two younger brothers from the waters of Lake Wingra, near Madison, Wisconsin, resulted in the drowning of Tom O'Dea and one of his brothers.

■ The tragedy occurred on June 28, soon after the close of school. The O'Dea family had gone to the Lake Wingra beach for an outing. Tom, age 19, and his brothers, William, age 16, and David, age 10, had waded into the lake, William carrying David on his shoulders. On reaching a step-off into deeper water, William was seized with cramps, and started to struggle in the water, and called for help. Tom, who was following immediately behind, brought David safely into shore, and returned for William. However, as Tom was nearly exhausted after having effected the first rescue, he was unable to hold up the second brother, and both sank. The scene was witnessed by a sister from the shore. Although she tried to attract the attention of persons who were swimming nearby, her efforts were of no avail.

■ Tom was initiated into Omega Chapter in May, 1930, and had begun what promised to be a full and brilliant career as a Phi Tau. He had completed his sophomore year in the College of Civil Engineering of the University of Wisconsin. He is survived by his father, mother, three sisters, and his younger brother, whose life he saved.

Sidelights of the Asheville Meeting

THE entertainment committee covered themselves with glory through the fine way in which entertainment features were handled. The many sports which Grove Park Inn affords were thoroughly enjoyed by all those in attendance at the convention, with attractive prizes as incentive to keen rivalry. Entertainment for the ladies at convention was of the best. Miniature golf, archery, bridge and trips through the famous Biltmore estate and the tour around the Grove Park Inn grounds were enjoyed.

The men also had their share of the fun. A smoker held Thursday evening drew many to the convention hall where a game of obstacle golf was kept continually in progress. With the outstanding achievements of the business sessions and the many forms of entertainment enjoyed, the convention fully earns its distinction of being Phi Kappa Tau's most successful.

Among the messages received by Phi Kappa Tau at the Twentieth Convention were greetings from Dean Edgar Ewing Brandon, Alpha, now in Paris, France; Clinton D. Boyd, Alpha, unavoidably detained at his home in Hamilton, Ohio; Bruce K. Brown, Zeta, whose business interests in New York City prevented his attending the convention; and John V. Shankweiler, Eta, who was unable to leave his home in Allentown, Pa. In behalf of the Sigma Chi Fraternity, George D. Luther, executive secretary, wired congratulations to Phi Kappa Tau.

The fraternity is especially indebted to the Biltmore Industries for their generous gift of homespun cloth for the ladies attending convention, an announcement of which came as a surprise during the progress of the banquet. Each lady was given sufficient material with which to make a dress. Homespun material was also given by the Industries as prizes to the lucky men who won the cloth at a special event during the banquet.

Never has Phi Kappa Tau experienced better treatment than that shown by the management of The Grove Park Inn. Nothing was too difficult for Mr. T. B. Horner and his capable corps of assistants, who willingly placed at the disposal of Phi Taus every facility of the hotel. Many were those who left the Twentieth Convention with the firm conviction that never before had the fraternity been given the hospitable treatment accorded all in Asheville. That everyone is duly grateful is hardly necessary to mention, for Phi Kappa Tau was unanimous in the decision that The Grove Park Inn is ideal for conventions.

Continuing the policy to have conventions in summer resorts removed from the distracting influences of a large city, the last gathering brought men into much closer contacts that could not have been possible were the meeting in a city. Furthermore, the American plan for hotels is one of the best means known to bring about a spirit of genuine good fellowship.

Place More Emphasis on Essentials Dean Brandon Tells Chapters

Scholarship Commissioner Makes Interesting Report

By DR. E. E. BRANDON

BEFORE reporting on the scholastic standing of our chapters for the scholastic year just closed, I desire to preface a paragraph from the scholastic report of the Interfraternity Council for the year 1928-29. Of the twenty-seven fraternities listed in that report that were founded before 1875, only two, Kappa Alpha Society and Beta Theta Pi, had an average scholarship above the average of all men in the institutions where these fraternities had chapters. Twenty-five fraternities had an average lower than the all-men average of their respective institutions. Six fraternities listed by the Interfraternity Conference were founded between 1875 and 1900. Three of these had an average above the all-men average.

The Interfraternity Conference report listed thirty-two fraternities founded since 1900. Of these, twenty-two had averages above the all-men average of their institutions. Was Phi Kappa Tau one of these twenty-two? I regret to report that it was not. For the first time since the Conference has prepared scholastic reports, Phi Kappa Tau landed on the left side of the base line. A motion

should be in order to appoint a day for fasting and prayer! Are we on our way to join those fraternities which consider it a disgrace to have an outstanding scholar in the chapter? Is it the ambition of Phi Kappa Tau to have its membership composed of intellectual mollicoddlers, jazz hounds, lounge lizards, ball players, and that other type of athlete known as "P. A.'s"?

We point with pride to the outstanding alumni in our organization, as do other fraternities, men who have made and are making an honorable career in the world in business, in society, in politics, in the professions,—in a word, in useful careers.

I have taken pains to investigate the scholastic history of these outstanding alumni and I am yet to find one who did not make good use of his college opportunities and left behind him a record of at least respectable scholarship. Scholarship is merely the tangible evidence of certain characteristics that any successful man must have: first, native ability, and second, strength of character. Even a very moderate ability if supported by character is a reasonable basis for ultimate success.

TAFT ON SCHOLARSHIP

WHAT do they go to college or a university for if they don't go for scholarship? There are a good many who don't, I agree, but those who do not, don't go for the proper purpose, go for social reasons, sometimes to establish themselves by reason of the fact that they are called college men, but those men don't understand what they are there for. When a man grows as old as I have, he then feels like resorting to profanity, as he ought not to do, at the misconception of life and the use of education and the use of universities by these feather-headed young men who don't look ahead to know the opportunities they have and to appreciate those opportunities. It is a dreadful waste. They don't understand that there are three things that will make them useful to themselves and the world. One is work, and hard work; another is self-denial and a third is the discipline of character the practice of the others bring about. That is what a university is for. It is to develop character, not alone for the subject itself, but for the country of which he hopes to be a useful part.

—CHIEF JUSTICE TAFT
at Psi Upsilon Convention.

The strongest criticism of college fraternities is in the statistics reported above, gathered by the Interfraternity Conference on the matter of scholarship. The older fraternities should hang their heads in shame in view of the fact that only two of them can furnish an average scholarship equal to the average scholarship of the men in the institutions where they are represented. Fifty per cent of the middle-aged fraternities are on the wrong side of the base line, and we younger fraternities are drifting the same way. Only this past year Phi Kappa Tau drifted from .5 of a point on the good side of the line to .1 of a point on the wrong side. We have our faces set the wrong way. We are retreating instead of advancing. What is the reason for it?

First of all, too many chapters have the wrong standard for pledges. It is of course very desirable that a pledge come from a good family, that he have good manners, that he know how to conduct himself in social intercourse, that he dress respectably, that he have a manly love of sport, and that he be congenial. Many of these qualities, I should say, are the "sine qua non" of fraternity membership. He should have these as a first requisite, but he might have all of them and yet be unworthy to be pledged. A college is not a social organization nor an athletic club. It is a place to study, and through study and scholastic associations prepares members for the higher walks of life. A young man who does not consider college from this point of view should not be there. Unfortunately the college cannot always keep him out, and once in cannot kick him out until it has the evidence that he has not the right attitude toward the college environment. The fraternity is in a different situation. It takes its members on a pledgedship. It has an opportunity to learn a great deal about the man even before he is pledged. It has a term of probation in which to judge him. If it finds that he does not have the two es-

NEW SCHOLARSHIP STATUTE

By the new Scholarship Statute adopted at the 20th Convention, each Resident Council, under supervision of the Domain Chief, must suspend every member of the chapter whose scholastic record is such that he has been placed upon probation by the administration of his institution. In the absence of such a system, any member not receiving passing grades in at least 60 per cent of his total number of hours shall be suspended.

Suspension of a Resident Council member means that the man surrenders his badge to the officers, that he loses a voice in chapter meetings as well as the privilege of participating in other chapter functions. A member under suspension will not be relieved of any financial obligations, nor will he be excused from regular meetings, although he has no vote.

Members suspended shall be reinstated only after returning to good standing scholastically. This Scholarship Statute is to be strictly enforced, and only in the case of serious illness or justifiable cause may the Domain Chief and the Board of Governors suspend its operation.

All suspensions for scholastic probation and reinstatements are to be reported to the General Office.

sential qualities mentioned above—scholastic ambition and character—he should not be received into membership.

Ask yourself if this is the standard demanded in your chapter. Is not the standard too often something else? Can he play ball? Will he shine at a formal? Will he be popular and get another office for the chapter? If a company was formed in your city to make soap, it would choose its executives, its foremen, and its workers with the idea of making soap, good soap, saleable soap, and thus reap profit for the organization. In order to maintain the morale of its employees it might organize a Y. M. C. A., bridge clubs, dancing circles, ball clubs, and an occasional picnic. But these would all be subsidiary to the main end, namely, making soap and getting profits. A man would not be taken into the employ of the organization simply because he was a good ball player, a good dancer, a bridge expert, an estimable saxophone

THE LAUREL OF PHI KAPPA TAU

player, or an organizer of picnics. One or more of these qualifications would be to the employee's advantage, but if he did not do his job in the organization and perform his part in making good soap and getting that profit, he would be fired even if he did play the saxophone well or pitch a wicked ball. Neither would he be originally hired in the or-

ganization because he possessed one or other of these useful but non-essential qualities. We would all laugh at a soap company that advertised for a P. A. who would incidentally work in the factory. And yet too many of our chapters do this very thing! If the standard required of a pledge were the proper standard,
(Continued on Page 29)

Phi Kappa Tau Comparative Scholarship 1929-30

	School Average	All Men's Average	Φ K T Average	Rank among Fraternities	Quarter
Alpha (Miami Univ.) I Sem.			2.597	1 in 13	1
II Sem.			2.577	2 in 13	1
Beta (Ohio Univ.) I Sem.	1.274	1.189	1.032	14 in 16	4
II Sem.	1.354	1.308	1.254	15 in 16	4
Gamma (Ohio State) 1928-29			2.08	38 in 74	3
Delta (Centre College) I Sem.			.808	7 in 7	4
II Sem.			.991	4 in 7	2
Zeta (Univ. of Illinois)		3.112	3.051	31 in 68	2
Kappa (Univ. of Kentucky)	1.343	1.248	1.391	8 in 19	2
Lambda (Purdue Univ.)	3.770	3.640	3.745	13 in 31	2
Nu (Univ. of California)				(Lowest ¼)	4
Omicron (Penn. State)	1.22	1.17	1.06	28 in 47	3
Tau (Univ. of Mich.) (1928-29)		74.55	76.00	16 in 59	1
Chi (N. C. State College)	78.27	78.27	78.00	5 in 14	2
Psi (Univ. of Colorado) I Quar.	77.62	77.17	73.16	19 in 20	4
II Quar.	78.78	78.51	74.64	19 in 20	4
Omega (Univ. of Wisconsin)		1.220	.921	45 in 46	4
Alpha Gamma (Univ. of Del.)			1.38	1 in 5	1
Alpha Delta (Case School of Applied Science)	1.109	1.13	1.21	3 in 10	1
Alpha Epsilon (Kansas State)			77.70	14 in 25	3
Alpha Zeta (Oregon State)	1.40	1.27	1.20	28 in 30	4
Alpha Eta (Univ. of Florida)		.847	.894	4 in 19	1
Alpha Kappa (Washington State) I Sem.			80.06	14 in 17	4
II Sem.			83.40	3 in 17	1
Alpha Mu (Ohio Wesleyan)	1.565	1.445	1.603	5 in 14	2
Alpha Nu (Iowa State) I Quar.	83.16	82.79	80.50	34 in 35	4
Alpha Xi (W. Va. Univ.)				8 in 25	2
Alpha Omicron (Lafayette)		2.97	3.01	4 in 16	1
Alpha Pi (Univ. of Wash.)		2.406	2.524	9 in 45	1
Alpha Rho (Georgia Tech.) I Sem.	69.57	69.57	71.30	9 in 23	2
II Sem.	72.14	72.14	71.81	13 in 23	3
Alpha Sigma (Colorado State)		.98	1.20	2 in 9	1

Dr. Wright Speaks on Building a Fraternity

IT is good for us to gather here in the Grand Chapter once a year to meet the members of our Brotherhood, to look into their faces, and to worship in this high place. I use that word WORSHIP meaningly because religion, the word itself, means a binding together and that is what this banquet is for. It is to bind us together. It is to make you feel a sense of common interest, to send you back home thrilled with the thoughts that have come to you and of visions that have opened before you as you have been in this high place.

When they went to the high places in the days gone by there were all sorts of entertainments. There was the fun-making part of a great gathering. There were picnics and festivals. There were competitions in song and oratory, but those were merely the side shows. The great thing was to listen to the words of wisdom and counsel from the leaders, to worship once more at the shrine and to renew the obligations.

I want tonight, if I can, to go with you to the shrine and in order to do that I must get away from the atmosphere of a banquet speech. I want to get the atmosphere of the holy place. I want to talk to you about one of the finest stories in fraternal life, THE TEMPLE OF DAVID.

You recall the story that David was not allowed to build the temple but kept the idea in his heart until he turned the plans over to his son, Solomon. We all know something of Solomon's Temple but I want to call your attention to the idea of David that was called the Sanctum Sanctorum, which was the innermost part of the temple. There the High Priest went every day to offer up his devotions to the ever-living God. Sometimes when he was alone in this



Dr. I. M. Wright

sacred place a great light would fill the room.

The Semites never gave his true name to their God. They always called him by some attribute and one of their favorite names was that of Adonai, the Shining One. The deepest and most devoted prayer they ever made was this—"And cause thy face to shine upon us."

If I could only interpret to you in my few minutes the fullness and the possibilities and powers of the Phi Kappa Tau Fraternity I am sure you would feel that for the moment you had come into the holy of holies and into the presence of Adonai, the Shining One.

Several years ago I watched the building of our great twenty story Pennsylvania Power and Light Building in Allentown and as it was being erected it seemed to me to be the finest illustration of a real college fraternity that I ever saw. I was interested in seeing that great building going up. Finally I discovered that every single thing that

THE LAUREL OF PHI KAPPA TAU

went into that building was marked. I never knew a fraternity man who was not marked. Before one can come into our fraternity the members mark him and he remains a marked man all of his life. There was something else about that building that impressed me because before they put it up there was another building on that site, they had to tear down. The tragedy of tearing something down. Sometimes you know the wrong type of boy gets into our fraternity and tears it down.

During the whole construction of that building there was not a single person about the place who stood around doing nothing. Everybody was busy. Each one had his definite work to do. I thought to myself—that is the ideal way to build a college fraternity. Have everyone do something toward the building. I often ask myself as I visit a chapter—Brother, what are you doing for this building—what kind of material are you going to put into it?

You know the old story where some people were taken up on a mountain and all of a sudden they saw the shining one and one man said 'Let's build an altar here.'

That is what we want—an altar where there is a flame and a fire and where we can take our vows. I came across a couplet the other day where, with a play on the words, the writer said:

'Tenderly around our hearts
Friendships bond is twining'

Tenderly around our hearts friendship's bond is twining and getting a fresh hold until as the years go by in our chapter life we find that somehow friendships bond has so twined about us that we know that just as long as life lasts we are one in the Phi Kappa Tau Fraternity.

You cannot build a fraternity unless there is co-operation. If there is someone in the fraternity who is holding back, if there is someone who is obsti-

nate, who will not go with the majority, who wants to set up his own will against the will of others—then you cannot make the chapter strong.

You know that that building analogy I have been using for the temple that David was going to build in the heart is a faulty one because the Power and Light Building is already up. The workmen have all gone. Not a sign to show it isn't an old building. But a college fraternity is never completed. You can build a house, or a church, or a business block, and get it done, but the building of a chapter goes on forever.

So if this fraternity is never to be finished if it is to change, yet, you who are here tonight looking out into the future know that you have tomorrow out there to do with as you will. The great trouble in building a fraternity, in visualizing this picture in the heart, is the kind of material you get. In a magazine some time ago there was a page devoted to pictures of the leaning towers of the world. Do you know what makes them lean? Somewhere in the construction they got some poor material. Somewhere the work went wrong.

Are there any leaning towers in Phi Kappa Tau? You know when you worry about that building material you have good reason to worry because the material is men. You have a wonderful opportunity in a college fraternity to help build men. There is a double reaction for if you help to build a man you also build yourself.

I have told you something about the path where all of the builders go. I have tried to show you the ideals upon which this fraternity must rest. I have called your attention to the priceless material with which a college fraternity builds. I have taken you back to the altar of Phi Kappa Tau, into the Sanctum Sanctorum, into the presence of Adonai, the Shining One. May his face shine forever and ever upon the members of our Brotherhood.

Alpha Is Constructing New Home

By RICHARD BRANDON

- With the removal of the central office to Oxford and the completion of plans for Alpha's new chapter house, Oxford is becoming a center of interest in the eyes of all members of Phi Kappa Tau.
- Not only have plans for the new house been completed, but construction is now being carried on. According to present information, the contractors should finish their work early in February.
- The house, which is of Colonial style, is being constructed of rough red-faced brick, with tall white pillars a feature of the front porch.
- In the basement are located the dining room, the chapter room, the kitchen, servant quarters, heating plant, store room for food, and a trunk room.
- The first floor consists of a long reception hall, a large living room with fireplace, a trophy room, a card room, a sun room, a suite of hostess rooms, and a guest room.
- On the second floor are eight study rooms, each to have a capacity of two men, and four bedrooms, each with a capacity of four men, and a lavatory. The four suites of two study rooms and one bed room each will have a capacity for housing sixteen men.
- Third floor is being planned on the dormitory style. There are two large dorms each to hold eight men. Study rooms and a lavatory are also located on this floor. This arrangement permits the housing of thirty-two men. Additional room will make it possible to house as many as forty-two.



Sketch of the Alpha Chapter House Now Under Construction

E. T. Boles Speaks of Fraternity Progress and History at Twentieth Convention Banquet

MY position in coming before you this evening as a speaker is somewhat similar to that of Madam Schumann-Heink when she was one time approached by an artist who wished to paint her portrait. Schumann-Heink tried in every possible way to get rid of this artist, but he was a very persistent fellow and finally, as a closing argument, he said to her, "Madam, I can assure you that we will do you justice." To which Schumann-Heink replied, "Sir, it is not justice but mercy that I would seek at your hands."

So I come to you this evening seeking mercy as a speaker rather than justice.

I think if we could have had pass before us all of the beautiful spots in America which we might possibly have chosen as a convention setting for Phi Kappa Tau, we could not have chosen better than "The Land of the Sky" and Grove Park Inn. Something over a year ago when I was privileged to be in Asheville and visit Grove Park Inn, I was tremendously impressed with this Inn as a setting for our convention. However, knowing something of the history of the past management of this Inn, and believing strongly the things that I had heard, I thought that it would never be possible that Phi Kappa Tau would enjoy the unique luxuriousness, the quiet restfulness, the unsurpassed view and the cordial hospitality that Grove Park Inn affords in such unusual degree.

My position in Phi Kappa Tau has been somewhat similar to a story that I have heard told of Sam Davis, who was known as the Oracle of the Nevada Sagebrush. It seems that Mr. Davis at one time was requested by the San Francisco Examiner to go to Reno and meet Sarah Bernhardt and conduct her over the mountains for her first tour of

the Pacific Coast. Mr. Davis was a very likeable fellow, and shortly after he had met Sarah Bernhardt, she would not be interviewed by any other newspaper man nor give out any utterances whatsoever to the newspapers except through him. So he acted as her official spokesman all the time she was on the Coast.

When the time came for her to go back East again and her private car was attached to the train that was about to pull out of the station and the engine bell was ringing, she placed her hands upon his shoulders, kissed him first upon the right cheek, then upon the left cheek, and finally squarely upon the lips, saying as she did so, "The right cheek is for the Carson 'Appeal', the left cheek is for the San Francisco 'Examiner', and the lips, my friend, is for yourself."

Davis, not at all embarrassed, said, "I also represent the Associated Press, which serves 380 newspapers west of the Mississippi River."

Ordinarily, it has been the custom of outgoing Grand Councilors to sing a swan song. I am going to institute quite a different program. I have been greatly honored by Phi Kappa Tau in the past and am going to be around in the future for further kisses. Not that I ever expect to again seek or accept a national office, but I do enjoy the work of Phi Kappa Tau, I expect to attend its conventions, I expect to attend the series such as I went through this year of Founders' Day Banquets, and even those sessions where the graduate brothers are gathered together in rather a sombre meeting, trying to pull their undergraduate brothers out of the slough of despond.

There is, however, one call that I shall be glad to never hear again and that is to the past midnight sessions of our Grand Council.

The history and progress of Phi Kappa Tau have always been a matter of very deep interest to me. I am going to say some things which remind me of a story, I have heard of Dr. Samuel Johnson, whom you all will remember as being famed by the fact that he compiled a dictionary. That isn't the only thing he was famed for, but it is one of the things. It seems that Dr. Johnson was caught unexpectedly at one time caressing another man's wife by the husband coming unexpectedly into the room. The husband, upon entering the room, said, "Why, Dr. Johnson, I am surprised!" To which Dr. Johnson replied, "No, you are astonished; I am surprised!"

So if I say anything later on that astonishes you in any way, I want you to know that it has been more or less a tradition for outgoing Grand Councilors to be able to say almost anything that they want to, and that it is said as history is repeated and in the hope that it may possibly be a light to Phi Kappa Tau in the paths of the future.

My association with Phi Kappa Tau began rather as one great man once said regarding his birth, that he was born quite young. I became a member of Phi Kappa Tau when I was quite young. Something of the history of Phi Kappa Tau that I want to take up starts back in the year 1916. In that year we held a convention at Alliance, Ohio. There were comparatively few chapters represented because there were very few chapters in the fraternity at that time. In those days when any of us thought that we had any influence in the fraternity at all, we used that influence to keep out of rather than to get into office. I happened to be absent from that convention and this explains why I was elected Grand President. That conven-



Ewing T. Boles

tion, however, did do one really great thing, it gave us our present name. So, with a new name and a new Grand President and plenty of internal worries, that convention adjourned.

I have started here with the history of Phi Kappa Tau because that was the point when I first became intimately connected with the various chapters and knew something of their workings. It is true that I was a member of the scared bunch of neophytes in Kentucky when the Ohio delegation invaded that state to acquire our fourth chapter and to make Phi Kappa Tau a national fraternity.

I think that the history of the fraternity can very well be divided into three periods. The first period was the foundation period. That, of course, dates from the founding until shortly after the World War. During this period, we were fighting for our very right to exist, not only as a national fraternity but as individual chapters on the campuses
(Continued on Page 30)



Presenting Active

EDITOR'S NOTE: *Perhaps no member of the fraternity associated with the Resident Council group is as important as is the Chapter Faculty Adviser. The Laurel presents here with the first of a series of articles dealing with the advisers of the various chapters.*

ALFRED E. MAFFLY, Nu

NATIVE San Franciscan and loyal son of Phi Kappa Tau is Alfred E. Maffly, chapter adviser of Nu Chapter at the University of California. Al was



Al Maffly

born in San Francisco in 1897, graduated from high school and Healds Business College there, and from the University of California in 1921.

While attending college, he became the loyal Phi Tau and Californian that he is. He was not only a most active member of the committee of the Orond Club which petitioned Phi Kappa Tau, but also served as one of the most efficient house managers we have ever had. Prominent in campus affairs, he was a member of B Γ Σ, national commerce scholastic honor society and of A K Ψ. His dulcet tones also lent much support to the California Glee Club.

Graduation did not terminate Al's Phi Tau activities. He has been secretary

Of Phi

of the Graduate Council of Nu Chapter, secretary of the Building Corporation, domain chief for the Pacific coast for three years, attended the National Phi Kappa Tau Conventions at Lexington, Ky., West Baden, Ind., and at Bigwinn Inn and he is now the most active chapter adviser we could ask for.

Following graduation, Al taught accounting at Healds Business College and worked for the General Cigar Company until 1929. He is now with the Burroughs Adding Machine Company in Oakland, Cal., and a member of the San Francisco Commercial Club and secretary of the Emeryville Kiwanis Club.

DR. W. H. SHIDELER, Alpha

ALPHA is fortunate in having eleven members on the faculty of Miami University. She is still more fortunate in having as her faculty adviser one of the Honored Founders, none other than Dr. W. H. Shideler.

Dr. Shideler has held nearly all of the important national offices during his many years as a member of Phi Kappa Tau. He now serves in the capacity of Grand Comptroller.

He is a graduate of Miami University with the bachelor of arts degree in 1907. After three years of graduate study he was granted his Ph. D. from Cornell. He returned the following fall to his alma mater as a member of the geology

Chapter Advisers



Kappa Tau

department. In 1920 Dr. Shideler was designated head of his department, the position he still holds today.

He ranks high among the select group of well-liked professors on the campus. Dr. Shideler is frequent visitor of the house and is warmly welcomed, for as a bridge partner and conversationalist, he has no equal.

With his intimate knowledge of fraternity affairs, together with his genial personality, W. H. Shideler makes the ideal faculty adviser.

W. E. WEISGERBER, Xi

PROF. W. E. WEISGERBER has been faculty adviser of Xi Chapter ever since the group of men known as "The Marshall Club" was initiated into



W. E. Weisgerber

the national organization of Phi Kappa Tau in 1921. He has been on the faculty of Franklin and Marshall College since 1913. His many years of college work, his experience in handling and studying the methods and tendencies of college men have fitted him admirably for his duty as faculty adviser of Xi Chapter. Better than

knowing merely what advice to give to the brothers of Xi, he understands how to give it to them; and thus he combines those qualities for which we know him as one of the most respected and esteemed chapter advisers of Phi Kappa Tau.

J. M. ROBINSON, Alpha Lambda

ALPHA LAMBDA is fortunate in having as a faculty adviser J. M. Robinson, prominent in Phi Tau activities and an old Alpha alumnus. He has proved of invaluable service to us in times of need and has helped us through many difficulties.



J. M. Robinson

Professor Robinson is a past president of $\Phi K \Phi$, past president of $\Gamma \Sigma \Delta$, and chairman of the faculty fraternity committee and is also an alumni member of A Γ P, social fraternity. Robinson's position as head professor of the department of zoology and entomology is the result of much hard work. After graduating from Miami University, he taught in lower grade schools for several years. In 1916 he was awarded his M. A. degree from Ohio State and later taught in several high schools.

Entomologist for the Alabama Agri-

THE LAUREL OF PHI KAPPA TAU

cultural Experiment Station, Fellow in American Association of Advancement of Science, Chairman, Cotton States branch of American Association of Economic Entomology, Entomology Society of America, Eugenics Research Association, member of Orthonologists Union are only some of his activities.

Professor Robinson was born in Rural, Ohio, January 30, 1889.

FRANK MICKLE, *Tau*

NOT only on the campus of the University of Michigan is Frank Mickle, adviser of Tau Chapter well known but he has also gained a lasting



Frank Mickle

reputation in national engineering circles. Mr. Mickle is an alumnus of Ohio State and on coming to the University of Michigan he was instrumental in the founding of Tau Chapter. He has maintained a close association with the active members

and may be called a close friend by every brother of Phi Kappa Tau.

Mr. Mickle is an assistant professor of mechanical engineering and teaches machine design at the University of Michigan. He is active on several committees for the standardization of gears, representing the American Society of Mechanical Engineers, and is also very active with the American Gear Manufacturing Association. He is consulting

engineer for the Economy Bailer Company, of Ann Arbor, the largest makers of cotton bailers in the world, and has done notable work in the designing of cotton compressors.

In addition to these numerous activities, Mr. Mickle is also a commissioned major in the Officers Reserve Corps.

RANDALL C. HILL, *Alpha Epsilon*

DR. RANDALL C. HILL is a charter member of Alpha Epsilon. He has been connected with the organization for the past six years, during which time he has served as president of the local chapter and is now serving as president of the graduate council. He attends most of the meetings and is always on hand with valuable suggestions.



R. C. Hill

At present he is in charge of the work in Sociology at K. S. A. C. He secured his Ph. D. degree at the University of Missouri in 1929 in the department of sociology. He is popular with his students, is a pleasing speaker, and a young man of unusual promise in his field.

DR F. E. BROWN, *Alpha Nu*

DOCTOR F. E. BROWN is chapter adviser to Alpha Nu. He has a Ph. D. in chemistry and is one of the best liked instructors on the campus. A few years back Dr. Brown was the lead-

THE LAUREL OF PHI KAPPA TAU

er of the anti-fraternity group of the Iowa State College Campus. One day he was invited to dinner, and met the members. He was invited back several more times and when Alpha Nu chapter became a chapter of Phi Tau, he was initiated with the rest. He always comes around in the fall and helps us get started. More than once he has helped entertain parents and make their visits more agreeable. There is not enough that can be said to show how Alpha Nu appreciates Dr. Brown.

FRED L. PLUMMER, *Alpha Delta*

PROF. FRED L. PLUMMER, chapter adviser of Alpha Delta, is in every sense a true Phi Tau. He has set for the members an example of what true Phi Taus should be. Professor Plummer is not only prominent as a member of the faculty of Case School of Applied Science, but is noted as the man who designed the new Zeppelin hangar near Akron, Ohio. Cleveland is indebted to him for his work in the designing of the new bridge at Brookside Park, as well as the new Lorain-Central bridge across the Cuyahoga river.

After attending the Yale conference for teachers of civil engineering this summer, Professor Plummer traveled in Europe. While in Belgium, he presented a paper to the engineering conference which was being held at the time.

Alpha Delta considers itself singularly fortunate in having as its adviser a man of Professor Plummer's caliber. Professor and Mrs. Plummer attend nearly all of the chapter's social activities, and assume deep interest in its welfare.

REV. HARRY P. C. CRESSMAN, *Eta*

THE Rev. Harry Cressman, *Eta* Chapter, ranks as best friend to a great number of Muhlenberg's student body. In fact the two initials in his name could readily stand for "Pleasant Chap," because that is how he is spoken of by everyone. He probably owes his disposition to the very active career he has experienced

The Rev. Cressman graduated from White Haven High School in 1907 and was valedictorian of his class. He took his A. B. degree at Muhlenberg in 1913, graduated from the Lutheran Theological Seminary in 1916, and received his M. A. in Sociology from the University of Pennsylvania in 1926.

During his undergraduate days he played football and baseball; managed track and tennis; was editor of the *Muhlenberg Weekly*, and business manager of the *Ciarla*; was president of the History Society, Press Club, and his class.

In 1916 he was pastor of a Lutheran Church at Wildwood, N. J., and the following year he was camp pastor of the U. S. Naval Training Station at Sewell's Point, N. J. Then in 1917 until the close of the war he was chaplain of the 311th Infantry, 78th Division, A. E. F. During the summer months he has spent his time working with boys in



Harry Cressman

THE LAUREL OF PHI KAPPA TAU

camp. In 1922 he was director of a Boy Scout Camp. From 1923 to 1928 he was associate director of the Allentown Y. M. C. A. Camp. In 1929 he was elected director of Camp Miller and he will fill that position next summer.

From the time the Rev. Cressman left the army he has been at Muhlenberg serving as chaplain and instructor, spending all his spare time with the students and the fraternity.

W. W. HODGE, *Alpha Xi*

THE activities of W. W. Hodge, a graduate of Ripon College include a M. A. from the University of Wisconsin and also from Yale University. One year as chemical engineer and plant superintendent for the General Laboratories Company of Madison, Wis. Two years as professor of chemistry and physics, Albany College, Albany, Ore.; one year as instructor in general chemistry at University of North Dakota; two and one-half years as assistant and later associate professor of organic and physical chemistry at Oregon State College, Corvallis, Ore.

Since 1921 Hodge has been professor of chemical engineering and head of that department at West Virginia University, also assistant director of the engineering experiment station since 1927. He is a member of T B II and of $\Phi \Lambda \Upsilon$, engineering and chemistry fraternities, director, Morgantown Kiwanis Club, and has published several papers on synthetic phenols, coal tar products, water purification, and other chemical engineering subjects.

Professor Hodge has been chapter adviser for Alpha Xi Chapter ever since it

was established on this campus and has always been willing to lend a helping hand.

The Caduceus of Kappa Sigma states: "Our educational system is considered so unimportant by our government that our United States Commissioner of Education has resigned to take a better job as president of a small university. Of his immediate predecessors in office, one resigned to become provost of a university and another to take the presidency of a private college, both more lucrative and important stations." Dr. John James Tigert, Vanderbilt '04, the commissioner mentioned, is president of Phi Delta Theta and the institution at which he is president is the University of Florida. He was United States Commissioner of Education for seven years.

Mrs. Herbert Hoover is a member of Kappa Kappa Gamma. Mrs. Calvin Coolidge is a member of Pi Beta Phi.

Charles Evans Hughes is a Delta Upsilon. He paid his graduate dues of \$1 by check. The check was auctioned at a fraternity luncheon for \$7 and is not to be cashed.

President Hoover was elected to Tau Beta Pi several years ago as an honorary member when that class of membership was still extant. He has never been initiated, however.

Arthur H. Vandenberg, recently appointed United States Senator from Michigan, is a Delta Upsilon from Michigan.

Phi Kappa Tau in Foreign Countries

Fraternity Members Located in All Continents;
Several Are Traveling and Studying in Europe

NOT only in this country is Phi Kappa Tau represented in many professions and walks of life, but in foreign lands as well, reports from various Graduate Council secretaries indicate.

Heading the list of fraternity members now abroad is Dean E. E. Brandon, Alpha, who is traveling in Europe. Other Alpha men outside of the United States include Carl Frederickson, who is working on a Firestone rubber plantation at Monrovia, Liberia. Donald S. Frederick is in Germany, while George H. Warner is in Porto Rico.

Phi Taus traveling in Europe include George Mecholson, Mu, who is spending a year in Europe studying with some of the best known voice technicians of the old world. Robert S. Knerr, Alpha Delta, is traveling in Europe, on a rather extended tour upon which he is taking pictures and studying customs. Bob plans to visit most every country in Europe and parts of Africa and Asia. His trips out of Paris, where he has established his headquarters, have so far covered the British Isles, Germany, Holland, France, Austria, Switzerland and Italy. The latest word shows him heading toward Russia. Bob does much traveling with a bicycle.

Lieut. Arthur W. Ellis, Nu, who received his appointment to the Marines from the R. O. T. C. of the University of California, is in active duty with the Marine Corps in China. Lieut. Ellis has been in foreign duty several times in the last two years. A short while ago he was stationed in Nicaragua. He returned last year, to be stationed at Bremerton, Wash., for a short period of time. Members of the local chapter have not

heard from him since he sailed for China but they feel sure that he will have many interesting experiences to tell them when he returns.

Gerald A. Drew, Nu, has been with the United States Consular Service for some time. He studied abroad for a number of months. His studies were mostly at the University of Paris. After a short visit at home on his return to the States he received his appointment to the U. S. Consulate Service at Para, Brazil. From all reports received, he is doing very well and enjoys the work. Para is on the Para River and is 70 miles inland from the sea.

Leith Allen, Nu, is now in New Zealand representing the Certainteed Products Company. He is located at Wellington, which is only a night's ride on the steamer from the famous town of Dunedin, from which Commander Byrd made his trip to Antarctica in 1928. Allen is there with his wife and family, and plans to be there for another year or so. Recent letters describe the Byrd Antarctic preparations and the return welcome. He says that the New Zealanders are as proud of Byrd and his party, as if he were their own countryman. The last communication received from Allen came aboard the ill-fated ship Tahiti which sank in the South Pacific. Passengers and first class mail being all that was saved by S. S. Ventura who quickly responded to the Tahiti's S. O. S.

The new President of the University of Arizona is Dr. H. L. Schantz a member of Theta Xi and formerly at the head of the Department of Botany at the University of Illinois.

How An Active Was Impressed By the 20th Annual Convention

AS I look back on the twentieth annual convention I find it difficult indeed to select any of the features as being in any way incomplete.

True Southern hospitality greeted me when I arrived at Grove Park Inn. The



Robert Misphey

Big Room was filled with Phi Taus from every chapter of our fraternity world.

After the preliminary registration the convention got under way. The manner in which the delegates entered into discussions gave me a deeper appreciation

of the bond of fellowship and fraternity. The problems of the various chapters and the counsel offered by the older men of the fraternity instilled me with the inspiration and confidence to carry ideas back home and work for a better Phi Kappa Tau.

As the convention ended, that opening enthusiasm was still present. The entire program—the Inn, the incomparable meals, the fun, and the good fellowship—sent the delegates home with memories of Phi Kappa Tau's most successful convention.

Lambda Men In Purdue Eleven Championship Backfield

By J. H. CARTER

THE two vacant places in Purdue's famous "Four Riveters" championship backfield combination will be capably filled this fall by two Phi Taus. Howard Kissel, of Columbus Grove, Ohio, and John A. White, of Louisville, Ky., are certain to be placed as regulars in the quartette.

White, a junior this year, will fill the quarterback position again. He piloted last year's team throughout the season to their championship of the Big Ten, and with that year of experience behind him, is one of Coach Kizer's mainstays in building up the 1930 aggregation. White weighs 180, and is one of the fastest men on the field.

Kissel, playing his last year of football for Purdue, has cinched the berth left vacant by the great "Pest" Welch. "Monk" has the reputation of being the hardest tackler on the varsity squad. He is a shifty runner, and adept at the spinner plays favored by the Purdue style. His quick-starting ability makes him a tower of strength in backing up a defensive line.

Births

To Prof. and Mrs. John Shankweiler, H, a son, Bruce Everitt, August 8.

To Mr. and Mrs. E. L. Bertillion, N, a daughter, Marie Louise, on June 8.

To Mr. and Mrs. E. T. Hughes, O, a son, July 10.

To Mr. and Mrs. Edward N. Adourian, A I, a son, Edward Nickols, Jr., on September 16.

To Mr. and Mrs. D. B. Waite, T, a daughter, Nancy, on August 11.

Xi Chapter Member Tells His Experiences On European Tour

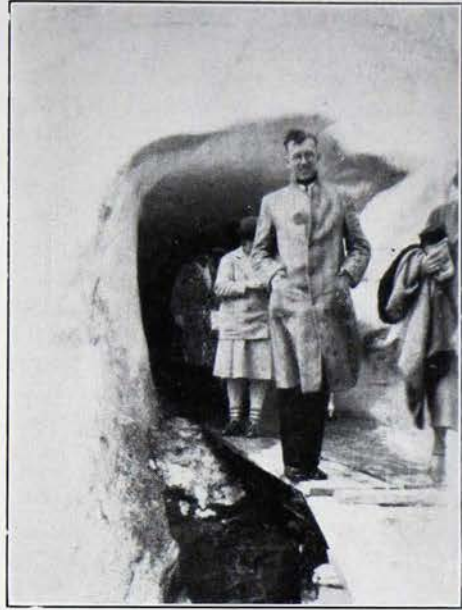
By J. B. FRANTZ

TOURING Europe was the favorite "sport" of thousands of Americans during the past summer. Among these thousands was a group of twelve college students from the vicinity of Lancaster, Pa., and in this group Phi Kappa Tau was represented by J. B. Frantz, a graduate member of Xi Chapter, who relates his impressions of his trip. The group visited Italy, Austria, Germany, Switzerland, France, England and Scotland.

"We sailed from New York on the afternoon of July 3. The voyage across the Atlantic was marked by ideal weather. On July 10 we passed the Azore Islands and on the 11 and 12 we were permitted to visit Gibraltar and Algiers, our boat, the *Saturnia*, having called at these ports for a few hours.

"Our tour really began on July 14 when we landed at Naples, Italy. Here we enjoyed the exhibits of the National Museum (especially those from the ruins of Pompeii) and on the following day viewed Vesuvius, the ruins of Pompeii and the beautiful scenery along the Amalfi Drive.

"In Rome one finds traces of anything that once possessed greatness in the realms of art, religion, or history. One could profitably spend an unlimited amount of time visiting the Old Roman Forum, with the remnants of the old columns and arches still standing; the Catacombs, the Church of the Holy Stairs, so called because it is supposed to contain a flight of twenty-eight marble steps from the home of Pilate which Jesus is said to have ascended; the old Appian way, with parts of its original cobblestone pavement on view at



John B. Frantz

places; the prison where the Apostle Paul was held a prisoner; the Pantheon, the Capitoline Museum and the great Vatican Galleries and St. Peter's Cathedral. These and a host of other places of interest should be described in more detail but time and space forbid.

"The lover of art should view the famous pictures in the Pitti Palace and Uffizi Gallery at Florence. Much of Michelangelo's best work is on exhibit in the city and we saw Cellini's famous bronze statue, the 'Perseus' and the masterpieces of Raphael. The doors of the Baptistry, the Cathedral, the old tower and the old square where Savonarola was burned at the stake and numerous other things rich in history and beauty were enjoyed in this illustrious city.

"Venice, 'the Queen of the Adriatic', thrilled us as it undoubtedly thrills all the tourists who visit this unique city. No longer did we travel on the street car, taxi or carriage! The gondola, guided by the ever faithful gondolier, glides past the numerous palaces whose

THE LAUREL OF PHI KAPPA TAU

very name evokes tragic or glorious memories.

"Leaving Italy with a feeling of regret we went north through the heart of the Austrian Tyrol to Innsbruck. We noted the change of scenery and the striking appearance of the native costumes.

"After enjoying a gorgeous ride through the Garmish pass we arrived at that quaint little German village, Oberammergau. This little village is typical of many of the little towns nearby. It is impossible to give a detailed description of the great Passion play, suffice it to say that it was the most realistic and dramatic production I have ever seen. Guido Mays, who played the part of Judas, was by far the outstanding individual actor but one must not forget the tableaux and group scenes which were almost perfect. I called on Anton Lang, the former 'Christus' of the Passion Play and our party stayed at a private home owned by a village family, all of whom had parts in the play.

"From Oberammergau we motored to Brunnen, Switzerland, where we remained ten days. We took several sight-seeing tours and the height and beauty of the peaks of the famous Swiss Alps, the numerous little Waterfalls, the harvesting of hay by the old fashioned methods from the irregular plots at the foot of the mighty mountain peaks, the famous Rhone glacier, the source of the Rhone river, and the abundance of wild flowers, all of these kept us gasping.

"I hesitate to begin to tell you about all that is beautiful and interesting in Paris. Perhaps the best known points of interest were the Eifel Tower, Arch of Triumph, Notre Dame Cathedral, Saint Chapelle, the Tomb of Napoleon, the famous Louvre Art Museum, and trips to Versailles and Fontainebleau. The night life is as 'wild' as you make it for there is a wide range of choice to pick from. I enjoyed the Opera

'Faust' in the famous old Opera House.

"Crossing the English Channel on the night of August 10 we arrived in London the following morning. We spent the day visiting the Parliament building, Westminster Abbey, Buckingham Palace, and the Towers. On the following day we visited the Shakespeare country and the Kenilworth and Warwick Castles. August 13 we passed through the English Lake district and sailed from Glasgow on the following day.

"Cold weather, a few ice bergs, and a beautiful ride down the St. Lawrence river before landing at Montreal, left lasting impressions on our minds. Tired but happy we arrived in Lancaster August 24."

❧ Marriages ❧

Harvey Jacobson, N, to Miss Bessie Scarf, a member of A Σ Δ at the University of California.

Hugh C. Nichols, A, to Miss Winbourne Smith, K K Γ, Salem, Ind., September 7.

Henry Leo Connor, A H, to Miss Madge Oxley, Princeton, W. Va.

Lee Fanning, A K, to Miss Elizabeth Grieve, Δ Z, Spokane, Wash.

Winifred Alexander, M, to Miss Irene Exern, Madison, Wis.

R. E. Rush, A M, to Miss Fran Holdsworth, K A Θ.

William Welday, A M, to Miss Frances Hulse A X Ω.

H. Dallas, A M, to Miss Mary Owen.

E. M. Pearce, O, to Miss Dora Probst,

June 25.
J. F. Miller, O, to Miss Marion Hart,

June 28.
Harold Woodworth, A Δ, to Miss Elsie H. Maurice, July 30.

G. K. Copeland, T, to Miss Marjorie Adams, X Ω, University of Michigan.

James E. Householder, B, to Violet E. Collins, X Ω.

Samuel Tracy, B, to Louise Daggett, Θ Φ Α.

The Absent Chapter

BOYD R. KEAR, A I

ALPHA IOTA Chapter sustained a heavy loss when one of its members, Boyd R. Kear, died shortly after being severely injured in an automobile



Boyd R. Kear

accident on June 9, near Sunbury, Pa. Kear was born in Philadelphia and entered the University of Pennsylvania in the fall of 1925. After finishing the pre-dental course he entered Temple University Dental School, where he was active in the Blue Key Society; *The Temple University News*; The Henry I. Dorr Dental Society, and was a member of $\Psi \Omega$, dental fraternity. Boyd was very popular among the boys at Penn and had a promising future.

CECIL R. HARRISON, A

Cecil R. Harrison, Alpha Chapter, was instantly killed in an automobile accident near his home in Middletown, Ohio, on July 4, 1930. Returning from a trip to a nearby town, "Stubby," as he was known to members of the fraternity, and several companions were forced from the highway.

Graduating from Miami University, Oxford, Ohio, in 1920, he left his home in College Corner, Ohio, to engage in business in Middletown. As an alumnus

he always was interested in Phi Kappa Tau activities and was one of the most active members of the Alpha Graduate Council.

Alpha Chapter was represented at the funeral services by Dean Edgar Ewing Brandon and Dr. W. H. Shideler.

R. H. JONES, JR., A Λ

ALL members of Alpha Lambda as well as all Phi Taus who knew him, will regret to hear of the death of Richard H. Jones, Jr., on August 17. The demise occurred in Andalusia, his hometown, following a tonsil operation.



R. H. Jones, Jr.

Richard was one of the outstanding men of Alpha Lambda Chapter. He was a second lieutenant in the Auburn R. O. T. C. unit and a second lieutenant in the reserve corps. He was also a member of the college orchestra and band. At the Mardi Gras in New Orleans last year, he played a cornet solo, "The Coronation March," before some thousands of people and had often played selections over the radio. He was a member of $K K \Psi$, band fraternity.

Richard had also been a member of First Presbyterian Church, the Knights of Pythias and had taken the first degree in Masonry.

THE LAUREL OF PHI KAPPA TAU

One Hundred Six Register

At Twentieth Convention

ONE hundred six persons, including twelve ladies, were registered at the Twentieth Annual Convention.

Following is the Central Office report of attendance by chapters:

ALPHA—William Amos, W. M. Foley, Earl B. Link, E. N. Littleton, Cecil A. Moyer, W. H. Shideler, Richard J. Young.

BETA—James S. Berry, H. H. Brokate, P. F. Good.

GAMMA—James E. Banta, H. A. Crawford, L. A. Kegerreis, Alfred J. Philby.

DELTA—E. T. Boles, Sol Feld, Martin A. Kottler.

EPSILON—Paul F. Opp, Harry C. Winkler.

ZETA—Francis McGary.

ETA—H. A. Bowman, M. J. Boyer, Gilbert F. Gatehouse, Paul H. Hildebrand, Charles D. Saul, Leonard M. Utz, John H. Wagner, Benjamin F. Wissler, I. M. Wright.

THETA—Ernest J. Crutcher, Willard N. Hogan.

IOTA—H. W. Chandler.

KAPPA—W. M. Baker, M. L. Barnes, Howard G. Kreuter.

LAMBDA—John E. Brumbaugh, R. C. Lennox, V. C. Manhart, F. C. Ruskaup.

MU—Charles Culmer, Robert R. Stone.

NU—Donald A. Pearce, Everett Silvia.

XI—Paul T. Gantt, Howard L. Gerhart, W. Loy Stine, Carl M. Tausig, H. Richard Taylor.

OMICRON—Walter M. Brown, R. H. Crone, Robert T. Gallagher.

PI—Roland W. Maxwell, Wilmer Morby, Henry C. Rohr.

RHO—N. S. Benzing, A. P. Walker.

SIGMA—George R. Hemstreet, Wilbur O. Peet.

TAU—L. F. Hyde, Robert W. Scoville.

UPSILON—Lester D. Cole, A. E. Eichberg, Harry A. Taylor.

PHI—M. W. Rush.

CHI—J. A. Creech, Howard Houser, A. L. Monroe, Fred Plonk, R. G. Thomas.

PSI—Ray A. Bushey, Richard F. Hogan, R. M. Watts.

OMEGA—Jack W. Jareo, Richard W. Orton.

ALPHA ALPHA—J. T. Bregger, Robert M. Pratt, William D. Pratt.

ALPHA BETA—Alfred E. Softy, George S. Vanderwende, Frank E. Wickham.

ALPHA GAMMA—Samuel Krewatch, J. J. Murray.

ALPHA DELTA—H. A. Robinson.

ALPHA EPSILON—Olney Mohney.

ALPHA ZETA—Robert G. Misphey.

ALPHA ETA—Harold B. Wahl.

ALPHA THETA—Frank H. Beard, F. B. Thomas.

ALPHA IOTA—Armand J. Andre, Hiram P. Bamberger, Charles A. Seaman.

ALPHA KAPPA—Norman L. Hovland.

ALPHA LAMBDA—Robert L. Hume.

ALPHA MU—Don S. Allen, William T. Clapp, Ralph A. Winters.

ALPHA NU—Wayne Riser, M. O. Waterman.

ALPHA XI—C. A. Bowers.

ALPHA OMICRON—Abram L. Buckwalter.

ALPHA PI—Harold Magnusen.

ALPHA RHO—F. H. Reynolds, L. W. Norton.

ALPHA SIGMA—Carl J. Nielsen.

LADIES—Mrs. I. M. Wright, Mrs. W. H. Shideler, Mrs. Carl M. Tausig, Mrs. E. J. Crutcher, Mrs. P. T. Gantt, Mrs. J. W. Jareo, Mrs. R. R. Stone, Mrs. P. H. Hildebrand, Mrs. M. O. Waterman, Mrs. G. S. Vanderwende, Miss Geraldine Shoup, Miss Cecile Byrd.

Dean Brandon Reports

On Phi Tau Scholarship

(Continued from Page 12)

embracing the essentials, the problem of scholarship would cease to exist. Will not Phi Kappa Tau lead the other fraternities? The business of the fraternity is to make able men, as the business of the soap company is to make good soap. Let us relegate the so-called "activities" to their proper place and put the emphasis on the essentials—ability, character and manliness.

Statistics on scholarship of the chapters for a year just past are always difficult to procure, and the report of your Commissioner has of necessity been incomplete in previous years. This year it is still more incomplete because his investigation had to close by the middle of July and in only one or two cases were reports received for the second semester. Many colleges do not make scholastic statistics by semesters but by the year, and of course these do not appear until the fall of the year.

Reports from only twenty-six of the institutions where we are represented have been received for the first part of the last scholastic year. Of these institutions, our chapters in seven of them stood in the highest quarter in regard to scholarship, and in nine others stood in the second quarter—that is, sixteen of the twenty-six reports available are above the average of the fraternities in those institutions. The other ten were below the average of the fraternities and eight of these, I regret to say, were in the lowest quarter. Not only is this very much to our discredit, but it must be remembered that fraternities average lower than the average of the men in most institutions. Even for the twenty-six from whom your Scholarship Commissioner has received a report, it was not always possible to secure the average of all men in the institution. For fourteen institutions this average was secured. In nine of these the average of

the chapter was above that of the men in the institution.

I regret that my report of this year has to be so very incomplete and I feel that I have done a rather poor job during the years that the Grand Council has committed this part of the work to my care. In an effort to help my successor, I beg leave to submit the following recommendations:

(1) That the Grand Council choose a Scholarship Commissioner who has the time and ambition to do this service either from their own members or outside of its membership.

(2) That the Scholarship Commissioner be not too far removed from the Grand Secretary's office.

(3) That he be given the names of the chapter advisors as soon as they are chosen for the scholastic year.

(4) That he start early in the year on active correspondence with the chapters and the chapter advisors.

(5) That suitable publicity be given in THE LAUREL to the scholastic standing of the chapters.

Respectfully submitted,

EDGAR EWING BRANDON.

Alpha Sigma Members Enjoying New Home at Ft. Collins

ALPHA Sigma Chapter now occupies a new house. During the first part of October a housewarming was held.

The dining and living rooms are finished in fumed oak, while the music room is finished in mahogany. The second floor consists of six large rooms and two baths. The dormitory, located on the third floor, contains forty-five folding beds which can easily be removed, converting the room into a spacious dance floor.

The new home is completely refurnished. The dining room has oak tables and chairs while the living and music rooms are furnished with extra heavy mohair upholstery.

Boles Speaks of Progress of Fraternity at Banquet

(Continued from Page 17)

where we were located. That type of fight that we had to go through at that time was a very necessary thing in the development of any fraternity. It was a rather sound foundation building and it did develop a very aggressive type of leadership, because, if we had not been aggressive at that time we would not have survived.

The second division that I would make of the history of Phi Kappa Tau would start shortly after the World War and continue up to one or two years ago, and that period I would classify as the period of rapid expansion.—not that at any time we became a mushroom organization or that we took chapters in wholesale or that we sent people around trying to gather anybody and everybody to make up a fraternity. Anyone who studies the history of Phi Kappa Tau knows that quite the opposite is the case. However, to go from a fraternity of some seven or eight chapters to a fraternity of some forty chapters means proportionately a very rapid growth over a period of some ten to twelve years.

It is true, the conditions at that time greatly favored our expansion. Men from all over the United States were flocking to our colleges and universities. They experienced a period of the most rapid growth that they have ever known, perhaps, in the history of the nation and during that particular period Phi Kappa Tau experienced its most rapid growth and, of course, proportionately it will always be the period of most rapid growth.

The final period and the period which we are going through now starts back some one or two years and I think will continue for perhaps the next five or ten years, and I would classify that period as that of internal development

or consolidation, bringing the chapters, the graduate and undergraduate chapters and the Grand Chapter into a better working, more closely knit unit for a better and grander Phi Kappa Tau.

All of these periods, of course, have been very necessary to the development of our fraternity and now, as we have forty-two chapters, all of us know that this places us in size in the fraternity world at a point where we are among the largest of the national fraternities.

When I dwell somewhat upon the period of solidification and classify the other period as the period of expansion, I do not want you to understand that I think we are not going to expand in the future. I certainly think that we are, and I wouldn't be at all surprised if the number of chapters that we will take in from year to year over the period of the next ten years will equal in number the chapters that we have acquired in the past ten years, but proportionately our growth will not be as great; and, of course, the organization which is necessary to properly solidify a fraternity had to be more or less missing in the early part of our growth and had to be acquired as we went along through the expansion period.

One of the things that I know all of us are particularly proud of and which we have pointed to this year with unusual pride is the very successful operation of our General Manager. I think that the general management of this fraternity is in exceptionally safe and in unusually strong hands. And that we can all look forward to the next era as being the golden era of Phi Kappa Tau.

One of the things which I am prone to talk about, because of the nature of my business I am more or less interested in it, is the finances of the fraternity. I can remember only a few years back when it was announced to the national convention that there appeared upon our statement that year an absolutely new item. That new item was \$5,000 placed in our endowment fund. Since

THE LAUREL OF PHI KAPPA TAU

that time, of course, that fund has increased rather considerably. In the period of the next few years which we are going through, I believe that it will increase in amount, much more than it has increased in the past few years.

One of the compelling reasons why I have talked about finance is, that the future of our fraternity is only as bright as the calibre of our management is great and as our financial program is sound. If our financial program is not sound and we ever get into a period of stress, we certainly are going to pay the consequences of inadequate finances. I think something of that danger might have been pointed out to those of us who had the pleasure of being present at the convention which met at Bigwin Inn, when Dr. Shepardson addressed us and told us something of the things which Beta Theta Pi went through in the period of the Civil War. None of us ever expect to go through a similar situation, but if we did have to go through a similar situation and were improperly or inadequately financed, we most assuredly would pay a very heavy penalty for such lack of foresight.

Perhaps it would not be altogether improper for me to dwell just a moment on some of the lessons which the past has taught us, since I am supposed to be talking about reminiscences. I have done a good deal like the Negro preacher who always took his text and then talked from it, and I want to further exercise that prerogative this evening.

It seems unnecessary to dwell any more upon financial matters except to say this, that the things which we have acquired in the way of adequate finances in the past have been acquired due to the fact that we have followed a budget program. It has been an economical budget program and we have stuck to it, and I hope that in the future whenever our budget is made out, it will be economical and also that we will move heaven and earth to stay within its confines.

The organization of the governing bodies of Phi Kappa Tau is, to my mind, extremely well set up. Our organization as far as administration is concerned is very similar to that of a corporation. We have our Grand President, who, of course, typifies the president of a corporation. We have our Grand Secretary, who is similar to a general manager of a corporation. We have our Grand Council, which corresponds to the Board of Directors. This is a very simple working program and I think it is a very effective one.

It has been in the past, and I believe and hope it will continue to be in the future, the policy of Phi Kappa Tau that the members of the Grand Council shall come from every section of the country in which Phi Kappa Tau is represented. As this fraternity continues to grow, it may be found necessary to increase the number in the Grand Council, or your Board of Directors, to include perhaps two more members, so that every section may be adequately represented. Not only does this come to us as an inheritance of the American people, who believe so strongly in equality of representation, but it also brings to the Grand Council itself the type of information which, unless it had members from every section of the country, would be denied it and which is very necessary in the settling of the various problems that continually come to its hands.

Finally, Phi Kappa Tau, like all other fraternities, has at times paid dearly for its politics. As in the history of our nation, so in the history of our fraternities, we have found political activity. It seems to be necessary and at times advisable. However, the price of indulging therein is entirely too great for all of us and I know that I am only speaking the thoughts of the leaders of all other fraternities as well as the leaders of our own fraternity when I say that I trust in the future the general management of our fraternity will be

THE LAUREL OF PHI KAPPA TAU

entirely free and clear of all participation whatsoever in political activities.

That pretty much summarizes the lessons of the past that I want to leave with you.

As I pointed out, we have profited tremendously by all of the periods of progress which Phi Kappa Tau has gone through. The reason, of course, for our progress and for our development is this, that we hope to be able to present to the neophyte who comes within our gates a finer and a better brotherhood than we have ever been able to present before. In the period that is to come, I feel assured that we will present a stronger, a finer, a better brotherhood of Phi Kappa Tau. I think that something of our ideal of brotherhood is very beautifully expressed in the poem "Brotherhood," by Edwin Markham:

"The crest and crowning of all good,
Life's final star, is Brotherhood;
For it will bring again to earth
Its long lost poesy and mirth,
Will give new light to every face,
The crowning joy upon the race;
And 'til it comes, we men are slaves,
And travel downward to dust of
graves.

"Come, clear the way, then, clear the
way:
Blind creeds and kings have had
their day.
Break the dead brush from the path;
Our hope is in the aftermath,
Our hope is in heroic men,
Star-led to build the world again.
To this event the ages ran:
Make way for Brotherhood!—Make
way for man!"

Alpha Eta Honors Its Pledges With Achievement Key

ALPHA ETA Chapter has, beginning last year, instituted a fraternity achievement key bearing the Phi Kappa Tau coat of arms which is awarded to pledges, who by virtue of scholastic average and activity in campus affairs, make a minimum of 25 points in the scale listed below.

The following men were awarded achievement keys this year:

Jerry Smith: business staff of *Seminole*, stage manager for Dramatic Club, assistant manager intramural board, numeral in track, elected to following honorary fraternities: $\Pi \Delta E$, $K \Phi K$, $\Sigma \Delta \Psi$, $A \Phi E$, Peabody Club, International Relations Club, and intramural teams.

Bruce Lehman: Above "B" average in scholarship, FFF Club, Farr Literary Society, adjudged neatest soldier in R. O.

T. C., and awarded gold medal, Bacchus Club assistant manager varsity baseball, intramural teams.

James Clendienen: honor roll both semesters with 2.7 scholastic average, vice-president Scribblers Club, vice-president $\Phi H \Sigma$, elected copy editor *Alligator*.

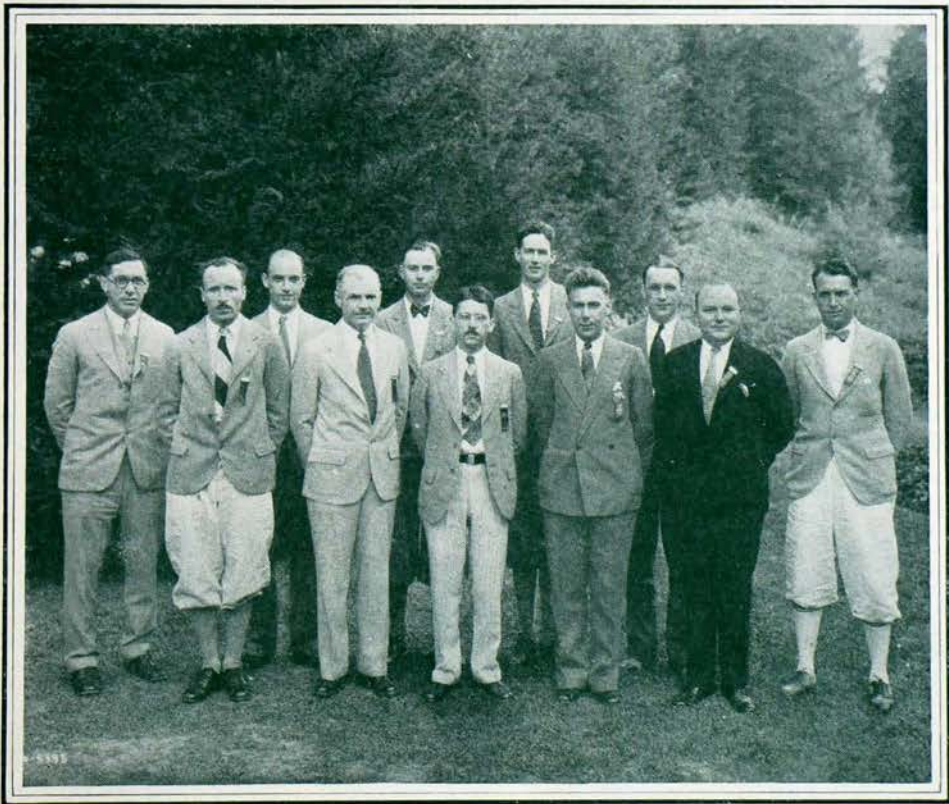
E. M. Mallory: Pharmacy Club, Freshman Glee Club, honor roll, grades—highest in freshman class—Pharmacy College, vice president and representative from Pharmacy College, University Debate Council.

There are several other men deserving honorable mention, who were not awarded keys because their scholastic average was not high enough. Alpha Eta is grateful to the following alumni and members who are the donors of these keys: Judge John H. Wahl, Sr., A. C. Deen, Allen Craig, Jennings Rehwinkel, and Harold Wahl.

PHI KAPPA TAU



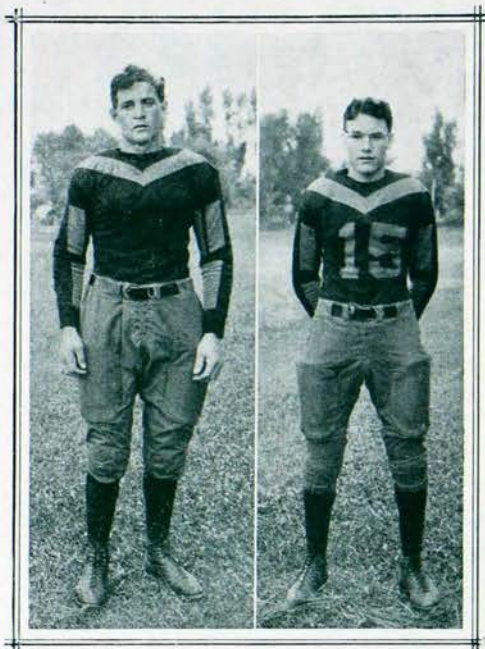
PICTORIAL



DOMAIN CHIEF GROUP AT ASHEVILLE CONVENTION

Back row, left to right: R. R. Stone, J. T. Bregger, D. A. Pearce, L. F. Hyde.
Front row, left to right: A. C. Eichberg, P. F. Opp, E. N. Littleton, M. J. Boyer, P. T. Gantt,
H. W. Chandler, E. J. Crutcher.

PHI TAUS ON THE GRIDIRON



Joseph Trescoln and Albert White, Alpha Sigma, members of the Colorado State Agricultural College football squad.



Jess Shaw, Pi, member of the University of Southern California grid team

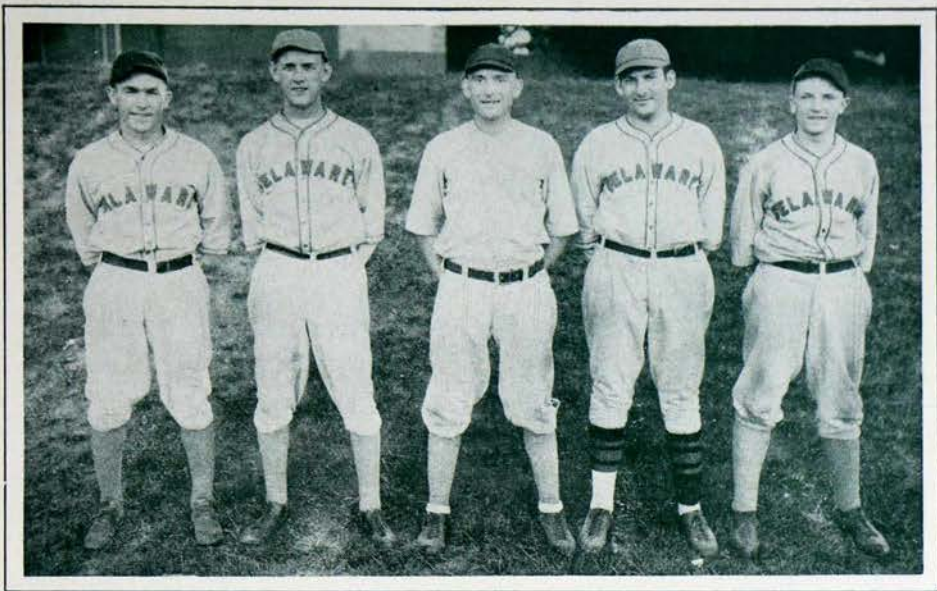
Right— Michael Kasarda, Phi, captain of the football squad at Bethany College this year. Kasarda calls signals from the halfback position. He is one of the six honor students in the junior class at Bethany.



John Baker, Pi, an outstanding player on the University of Southern California football squad



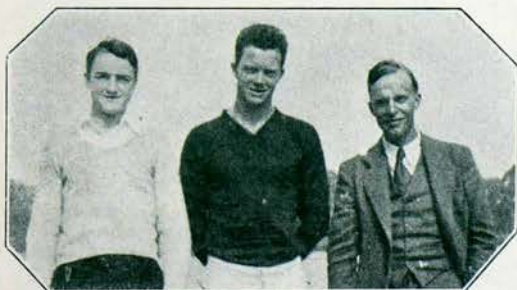
John White and Howard Kissell, two members of the 1930 edition of the Championship Purdue football team. Both saw action last year in winning the Big Ten championship and are regulars on the squad in backfield positions again this year.



Alpha Gamma men in baseball at the University of Delaware. Left to Right: Ralph Snowberger, varsity captain; Herman Ryan, pitcher; Gordon Armstrong, junior varsity; George Hall, pitcher; Rodman Steel, fielder.



Rho Chapter's champion relay team at Rensselaer Polytechnic Institute. Left to right: Alanson N. Rogers, Richard E. Burt, John S. Horn, Richard McCormick.



Three members of Nu Chapter, as they appeared during the crew races at Princeton University this summer: Glenn Rogers, Harver T. Granger, and Thomas T. Townsend, Jr.



Glenn Rogers '33 of Nu Chapter, University of California, was a strong contender in frosh crew last year and shows promise for varsity honors. This summer he visited Princeton during the varsity crew races and later went to the Azores on a cruise with the Harvard unit of the U. S. Navy R. O. T. C.



Exterior of Alpha Sigma Chapter House,
Colorado State Agricultural College.



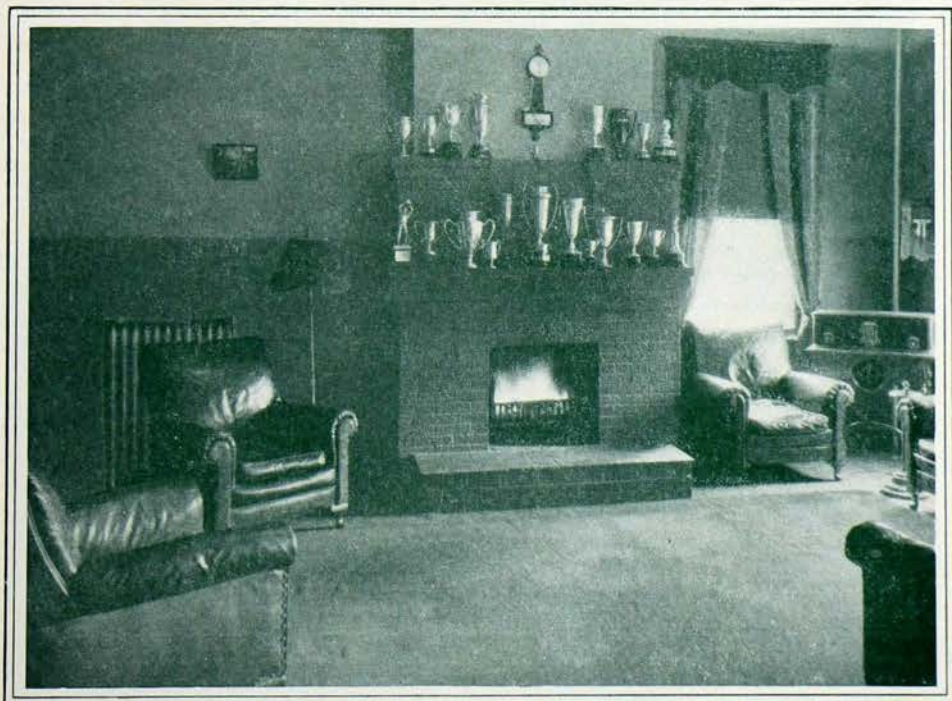
Xi Chapter house, located at Franklin and
Marshall College, Lancaster, Pa.



Mu Chapter house, Lawrence College.



Lounge room of Omega Chapter at the University of Wisconsin, Madison, Wis.



Lounge of Alpha Chapter at Miami University, Oxford, Ohio.



Alpha Theta Chapter group



Group of Alpha officers: left to right: Oliver Amos, vice-president; Walter Ott, sergeant at arms; William Amos, president; Edgar Hutchison, steward; Kermith Fligor, secretary.



Iota Chapter group,
Coe College, Cedar
Rapids, Iowa.

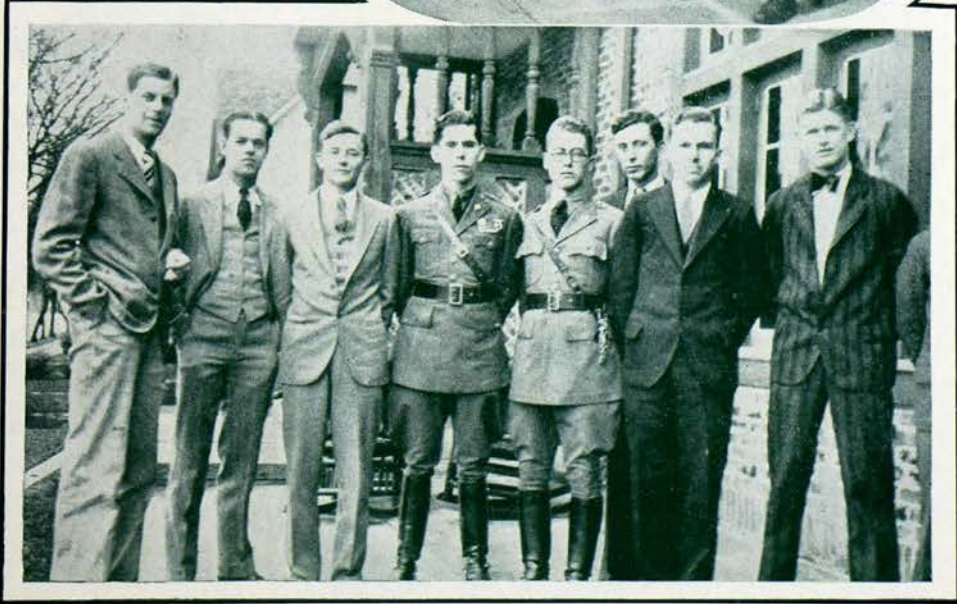




Pledge group at Lambda Chapter, Purdue University.



Seniors at Lambda Chapter.



1930 chapter officers at Lambda Chapter, Purdue University, Lafayette, Ind.



Harold Bowman, Eta, is the president of the chapter, and a member of Omicron Delta Kappa fraternity.

Charles Gerner, Eta, is center on the Muhlenberg football team.

LeRoy Snyder, Eta, is captain of the Muhlenberg tennis team, and a member of Omicron Delta Kappa fraternity.

O. M. Mohney, president of Alpha Epsilon Chapter at the Kansas State Agricultural College, is popular on the Kansas State campus in engineering circles, being editor of the Kansas State Engineer, and a member of Steel Ring, an organization for outstanding engineers.



Wilmer Morby, Pi, is president of the chapter at University of Southern California. Morby is a member of the school legislative council as representative from the College of Commerce, Trojan Knights, Alpha Kappa Psi.



N. Hovland, president, and Robin Wilson, vice-president of Alpha Kappa Chapter at Washington State College.



EDITORIALS

CONVENTION, 1930

ONCE more has Phi Kappa Tau reached a milepost in its march of progress—the Twentieth Annual Convention; at Grove Park Inn, Asheville, North Carolina, during the last days of August, and all those who attended the inspiring meetings and enjoyed the fine hospitality which only Grove Park Inn could offer, will remember the convention as one of the truly outstanding mileposts in the history of the fraternity.

Not only in work accomplished and contacts renewed did the convention achieve success, but in other fields as well. For those who could not attend, much of the material is presented herein, with a hope that many may derive partially, at least, some of the wholesome fraternal ideals with which the convention abounded.



THE DOMAIN CHIEF CUP

ANNOUNCEMENT was made at the Convention Banquet that the Domain Chief Cup, awarded each year to the outstanding chapter in the fraternity, was presented this year to two Phi Kappa Tau Chapters, Alpha and Pi, who will share the trophy for an equal length of time during the coming year.

Our hats are off to these two chapters. Both groups have remarkable records in scholarship, financial standing, and in activities. The attainments of these two chapters should be incentives to other chapters, now starting a new year, who by earnest effort, can place themselves in line for the coveted trophy when it is awarded next year.



WELCOME

ONE of the many splendid actions of the Twentieth Annual Convention was to grant unanimously the request of Phi Delta Sigma the right to become a chapter of Phi Kappa Tau, and by the time THE LAUREL reaches its readers, Alpha Tau chapter of the fraternity will have become a reality, and another strong link will have been added to the chain of brotherhood that binds Phi Kappa Tau, both members and chapters.

THE LAUREL OF PHI KAPPA TAU

Phi Delta Sigma comes into the fraternity as a local well established on the Cornell University campus, a leader at that institution for the past twenty-eight years. To have at Cornell a chapter of Phi Kappa Tau in a group as well-rounded as Alpha Tau Chapter is, indeed, an assurance that the new link in the chain is a most strong one.



SCHOLARSHIP

SCHOLARSHIP Commissioner Brandon presented a most clear-cut picture of Phi Kappa Tau scholarship in his report to the Twentieth Annual Convention in which he accurately analyzed what is lacking in Phi Tau scholarship when it shows on the wrong side of the line. Fraternity chapters can well heed Dean Brandon's sound advice during the present school year, for after all, high scholarship should be the essential goal of every chapter.



PLEDGES

WITH hardly a single exception every chapter in Phi Kappa Tau has chosen pledges for the current school year. Within a few short years we will turn to these men for support as they gradually take over the responsibilities of the Resident Council.

As you go about your work, don't forget that these men must be instructed properly if they are to "carry on" after you have gone. Heed well the advice of older men, and give all the attention you can to these pledges. Look back upon the time, a few short years ago, when you, too, were but a neophyte. For those who were properly advised there should be no need for this word of warning. For those who were not privileged to receive fair attention, that action alone should be a spur to correct the weakness in chapter management.

Remember, those who are Phi Kappa Tau initiates, your responsibility is great! Build well for the years to come and your chapter will be one of which you need never be ashamed. Always has the fraternity prided itself that there has been a strong line of succession in Resident Council officers. See that the future will make a record even greater—give your pledges proper instruction, offer them helpful advice, and assist them to do those things worthwhile, making them better able to meet the world at large.

Persons and Events

News of Interest Form Graduate Council News Letters

● Art Davis, Alpha Alpha, has been adding more and more laurels to his past flying records during the National Air Races in Chicago. After finishing second in the Miami-to-Chicago Derby (missing first place by a mere three minutes), and in which he won a majority of lap prizes, Art has been capturing a large quota of firsts in the contests at the Chicago flying field, including dead stick landings, balloon bursting, and parachute jumps. He also took second in one of the air races. Following the Chicago program Art continued his participation in other air events, including the Ford Tour.

● F. A. Harper, Alpha Alpha, is still living in Ithaca, New York. His latest position is that of Field Agent for the Federal Farm Board, supervising a study of cooperative business in New York and the twelve northeastern states.

● Paul Dildine, Alpha, '14, 1746 S. 14th St., Cuyahoga Falls, Ohio, who has been connected with the B. F. Goodrich Company as engineer in charge of time study, standards and budgets, was significantly honored by the American Management Association at their Spring Convention at the Hotel Astor in New York by being chosen as vice-president in charge of shop methods division and also by being elected to serve on the Board of Directors for a three year term.

● Clarence W. Kerr, Alpha, '15, is pastor of the First Presbyterian Church of Monaca, Pennsylvania.

Delta Graduate News

By TOM FULLENLOVE

PENN, who was football captain, king of the carnival, last year, is now teaching and coaching at Erlanger, Ky.

Arch Caudill is also teaching in Blackey, Ky.

Kelly Deaton is teaching and coaching in Hazard, Ky.

Jimmie Going '29, graduated from Kelly field this June a second lieutenant in the air corps.

George Coe '29, is a sophomore at the University of Louisville Medical school. Tom Fullenlove is a freshman there this year.

Fred Caudill '23, is a member of the board of the Louisville City Hospital. He graduated from the University of Louisville Medical School in 1927.

Doug Chamberlain who graduated in 1919 has a Ph D. and is teaching at the Presbyterian Theological Seminary in Louisville, Ky.

Bob Ogden, who graduated way back in '18, has been in Tripoli Syria for the past five years as a missionary. He came home this spring and wandered around the house, reminiscing.

Herb Meyer likes Centre so well that he is going to stay there this year and work for it. He graduated last year.

Gene Lowrey failed to get into Medical school so he is going to work for the Government for a year—he is going to be a mail man!

Larry Caudill who graduated with his brother, Fred, has been some sort of editor on the *Atlanta Journal* now these many years.

AMONG THE GREEKS

Two New Members Admitted to Interfraternity Conference

At the June meeting of the executive committee of the Interfraternity Conference, Sigma Tau Phi and Sigma Delta Rho were admitted to junior membership.

Sigma Tau Phi was founded at the University of Pennsylvania in 1917, and has chapters at the University of Pennsylvania, University of Cincinnati, Pennsylvania State College, University of Delaware, Dickinson College, Temple University, and New York University.

Sigma Delta Rho was founded as a local at Miami on January 8, 1921, and became a national on December 2, 1922. Chapters are located at Miami University, Ohio State University, University of the City of Toledo, University of Illinois, University of Cincinnati, Ohio University, and Franklin and Marshall College—*The Theta News* of Theta Kappa Nu.

Two hundred and fifty Delta Gammas met at Grove Park Inn, Asheville, North Carolina on June 24th. Two of the living founders were present. The convention voted to discontinue the use of the word national in connection with its Council; ordered a revision of the song book; provided for a pledge manual as well as one for the Province Chiefs; created a new Fellowship of \$500.00

for scholarship work and decided to hold the 1932 convention at Victoria, British Columbia.

Phi Beta Kappa In "Who's Who"

Of the 28,805 living men and women whose names appear in the latest edition of "Who's Who" in America, 5,555 are members of Phi Beta Kappa, scholastic honor society. This number, according to the *Phi Beta Kappa Key*, represents ten per cent of the Society's entire living membership. The members of the Society listed in "Who's Who" total approximately 19 per cent of all men listed in the volume.

Analyzing these results further, the *Key* finds that, deducting the members who have graduated within the past fifteen years, it is found that 20 per cent of all Phi Beta Kappa members who graduated fifteen or more years ago are now listed in "Who's Who."—*The Palm* of Alpha Tau Omega.

Dr. Marion Hines Loeb, Zeta Tau Alpha, as professor of anatomy at Johns Hopkins University, holds the highest position that this university has ever awarded a woman. Dr. Loeb graduated from Smith College in 1913, and received her Ph. D. from the University of Chicago. She also did research work in Cambridge and London.

THE CHAPTERS

¶Eta, Sigma, Tau, Kappa, Alpha Delta, Omicron, and Alpha Xi are a few of the chapters who entered new or redecorated homes this year.

¶Iota Chapter leads organizations in scholarship on Coe College Campus.

¶Alpha Chapter freshmen won the scholarship cup at Miami University; sixteen Alpha men were listed on the university honor rolls.

¶Six Xi Chapter men are on the Franklin and Marshall grid squad.

¶All chapters report successful rushing periods at their respective institutions.

¶Jack White, Lambda, elected captain of the Purdue University tennis team.

Sigma Redecorates the Chapter Home; Ruling Delays Rushing

By GEORGE R. HEMSTREET

SYRACUSE, N. Y.—Every member of Sigma Chapter who did not graduate in June with the exception of one, returned to school. Turver has been transferred to Lawrence College and has been welcomed by Mu Chapter.

The first few days of the new semester were spent in redecorating the house. Our new university rushing rules make it impossible for us to rush freshmen prior to Nov. 17. At that time a two week rushing period will be conducted. We are now rushing sophomores and second semester freshmen as the rushing rule does not apply to them.

TO HOLD DANCE

Our first dance will be held Nov. 1, with a hollow'een theme. The Syracuse-Brown game will be held that afternoon, so with that as an additional attraction we expect a large crowd at our first dance. We will have our usual Dad's Day in compliance with the university ruling. No date has been set for it by the university but it is expected to be sometime in the latter part of October.

September 27, Syracuse played Rensselaer Polytechnic Institute and overwhelmed them by the score of 55 to 0. This was the first football game of the season. It was originally planned to have a dance following the game but as it was held at night, arrangements for a dance were impossible. Ten of the brothers of Rho Chapter drove down from R. P. I. and spent the week-end with us. Several of the alumni were also back for the game.

Since the opening of school the chapter has been favored by visits of Cavanaugh and Perry of Rho, and Baxster, Alpha Rho. Bartley, Lambda, also paid a short visit. Bedard '29, was back for a few days before beginning his new position as instructor of entomology at the University of Michigan. Maine '23 is resuming his graduate work in the utilization department of the Forestry College.

Kappa In New Chapter Home Looks to Successful Year

University of Kentucky

LEXINGTON, KY.—With a new house and a most successful pledging season, Kappa looks forward to the most prom-

ising year in the history of the chapter. Fire two weeks before opening of school destroyed our old house, together with the furniture and trophies. Fortunately the loss was covered by insurance, and we are now at home to Phi Taus on 365 Aylesford Place.

Kappa wishes to announce the pledging of:

Stanley Bach, Lexington; Sheldon Wagner, Bellevue; Philip Meyers, Bellevue; Marvin Wachs, Covington; Gilbert Kingsberry, Covington; E. J. Fisher, Bellevue; Bratcher Bilbro, Hartford; Earl Nelson, Covington; Vaughn Bertholf, Richmond; Frank Adams, Hustonville; Charles Lovell, Danville; Leon Reese, Lexington; Lucien Congleton, Lexington; William Bryan, Lexington; John Rice, Lexington; Beatty Davis, Covington; John Stokely, Lexington; Kenneth Gardner, Pittsburgh, Pa.; James Cavins, Lexington; J. D. Barnes, Lexington; Robert Adams, Chillicothe, Ohio.

Wright, named as one of the outstanding tackles in the Southern Conference last year has his position on the varsity assured him. Pledges out for football are Fisher, Wagner, Meyer, Bilbro, and Bach. In the first frosh game Bach starred, scoring the only touchdown made. Prospects for a highly successful year in athletics are evident with the return of a strong track, basketball and baseball aggregation, including Barnes, captain of the varsity baseball team.

House Dance At Alpha Rho Is Rush Week Climax

Georgia School of Technology

By L. J. McLEOD

ATLANTA, GA.—The Alpha Rho Chapter gave a house dance on the evening of September 26 as a climax to rush week, which ended on that date.

Recent pledges are J. H. Suddeth,

Shelton Hendricks, Dan Henry, Dale Frakes, Phil Ballard, Charles Brady, Lew Blanc, and Wilson McEwen.

The Alpha Rho Chapter now resides at 116 North Avenue, N. W., Atlanta.

Alpha Rho will have its share of athletes this year, with Bill Hale out for varsity football, and Charles Brady, who has an excellent chance of making the freshman team. C. B. Drennon is out for fall baseball practice, and will probably play regularly next spring. J. F. Cochran has signed up for varsity track. He was ineligible last year, but will try out for the half-mile when track season starts.

Tau Chapter Active on Campus; Scholarship Rating Advances

University of Michigan

By HARRY B. CULVER

ANN ARBOR, MICH.—The members of Tau Chapter were pleasantly surprised upon their return from the summer vacation to find that the chapter house had been redecorated in several rooms, new furniture had been secured, and the outside had been painted. It also learned that the chapter scholarship rating had advanced to fourteenth out of seventy active fraternities on the campus.

The improvements in the house made rushing much more convenient and Tau announces the pledging of John Childs, South Pasadena, Cal.; John Nash, Salt Lake City, Utah; Donald Pope, Highland Park, Michigan; Clayton Whiting, Chicago; Thomas Lowry, Cleveland, Ohio; Stanley Harrison, Pittsburgh, Pa.; and Kenneth Dadson, Glen Ridge, N. J. The residences of these men range from coast to coast and combined with the active members give Tau one of the most cosmopolitan groups of all the chapters.

Tau Chapter is falling into the full swing of campus activities. James Shelton has an excellent chance of becom-

ing manager of the cross-country team, Cullen Kennedy is associate editor of the sports section of the *Michigan Daily*, Jerry Ricketts will soon be reporting for the varsity basketball team, Al Taylor is a member of the Michigan band, and Bob Culver is on the executive committee of the Michigan Union.

Tau was well represented at the national convention at Asheville by Robert Scoville, president of the chapter, Henry Schmidt, and Domain Chief Hyde, all of whom took an active part in the proceedings.

Tau is looking forward to an active social program beginning in the latter part of October with a party scheduled after the Michigan-Illinois football game, and another during homecoming week after the game with Minnesota.

Alpha Eta Honors Her Pledges; Chapter High Scholastically

University of Florida

By FRED MARCHMAN

GAINESVILLE, FLA.—The Alpha Eta Chapter held its annual pledge banquet Oct. 1 in honor of the nineteen men who have been pledged this year. The pledges are:

Scoble Ellington, Tommy Sachwell, Clark Gourley, Al Bassett, R. L. Witherrill, E. M. Mallory, David Harris, H. A. Whittaker, Frank Russell, Ben Coghurn, Thomas Tatham, William Lantaff, William Fenn, Franklin Bunch, Leo Gregory, DeWhitt Baltuth, Earle Brown, Ben Tucker and Roy Clark. In addition to the pledges, twenty-nine old men are back, making a total of forty-eight, the largest in the history of the chapter.

The interior of the house, downstairs, has been refurnished and redecorated.

Alpha Eta finished the year in the upper quarter in scholastic standing and is looking forward to a banner year in scholarship, athletics, and campus activities.

MEN AWARDED KEYS

Lehman, G. Smith, Clendinen, and Mallory were awarded pledge achievement keys for outstanding honors in scholarship and campus activities. Three Phi Tau sophomores, Whittaker, Harris, and Katsch, served on this year's Freshman Commission which had charge of Freshman Week. Two others, H. Wahl, and K. Smith served as upper-classmen advisors. Jerry Smith has just recently been appointed to the Intramural Board. Beppo Johansen has recently pledged $\Phi \Delta \Phi$, honorary legal fraternity. Leo Gregory is showing promise as half-back on the freshman football team. Harold Munger, captain of Florida's 1930 track team, finished fifth in the National Decathlon championships held recently in Philadelphia.

Pledges to Serpents, campus dance society, are:

Roy Purvis, B. R. Johansen, Al Bassett, and Tommy Sachwell. Bacchus, freshman dance club pledged Ben Coghurn and Tommy Sachwell. Recent pledges to the Thetas, campus social organization include Billy Fenn, Louis MacDowell, Roy Clark, Scoble Ellington, and E. M. Mallory.

Pledge Nine at Alpha Kappa

Washington State College

PULLMAN, WASH.—Alpha Kappa announces the pledging of James Harrington, Marysville; Theodore Richards, Toppenish; Floyd Tesarick, Spokane; Turner Kuhn, Seattle; Elwood Larson, Everett; Frank Pomeroy, Everett; Frank Powers, Seattle; David Partch, Sunnyside; Harry Nelson, Sunnyside.

Norman Hovland, is on the varsity wrestling team. Gene Slagle is also on the varsity wrestling squad. Robert Wilson, our social chairman, is night editor on the *Evergreen*, the school paper. Russel Faulkner is on the Rally Committee. Bud Gould is intramural manager. Bud will also be on the varsity basketball squad. Kenneth Yeend

is out for frosh debate, he also has the lead in an all college play. Frank Powers, Theodore Richards and Howard Warrick are out for frosh football. Gordon McLean is holding down his berth on the varsity cross country team for the second year.

Bright Outlook for Mu With Pledges and Grid Candidates

Lawrence College

By HOLLIS ROBERTS

APPLETON, WIS.—With twelve men pledged and four men making strong bids for positions on the Lawrence college football squad, Mu chapter has started off the 1930-31 year with a spirit which promises to carry the chapter through another successful year.

Those men pledged to Mu Chapter during the rushing season just closed are:

Philip Sunnes, Chicago; Gerald Brown, Escanaba, Mich.; Ned Nienstedt, Two Rivers, Wis.; Lester R. Poppe, Appleton, Wis.; William Little, Escanaba, Mich.; Richard Gust, Baraboo, Wis.; Robert Scheible, Baraboo, Wis.; Warren Richards, Black River Falls, Wis.; Henry Mattson, Iron Mountain, Mich.; Jack Kimball, Appleton, Wis.; Robert Ruedebush, Mayville, Wis.; Clifford Burg, Appleton, Wis.

PLAY ON VARSITY

Oscar Christenson, Myles MacMillan, Charles Culmer, and Harold Wurtz are men who are making bids for the Viking varsity this season. Christenson is holding down the berth of fullback on the varsity, MacMillan is in the running for the pivot post, and Culmer and Wurtz are trying out for tackle and guard positions. Both MacMillan and Christenson saw action in games with Marquette University of Milwaukee, and the University of Wisconsin.

Members of Mu Chapter who graduated from Lawrence in 1930 and who

have now accepted positions or continuing their education are as follows:

Carl Hoffman, Appleton, has been appointed to an assistant professorship in biological science at the University of Michigan; Francis Nemacheck, Bessemer, Mich., is teaching English at the Beaver Dam, Wisconsin, high school; George H. Bousu of Hancock, Mich., is working for the degree of Master of Arts at the University of Michigan; Earl Makela, Ishpeming, Mich., is principal of the high school at Nichols, Wis.; Henry Berzinski of Manitowoc, Wis., is sales representative for the Beechnut Packing Company; Herbert Ungrodt and Harold Huelster are affiliated with the Employers' Mutual Insurance Company.

Twenty-nine men are in the active chapter, including Charles Turver, who transferred to Lawrence from Syracuse University, where he was a member of Sigma Chapter.

Beta Pledges Nineteen Men; Land Berths on Grid Team

Ohio University

By JAMES F. HUNT

ATHENS, OHIO.—Beta Chapter announces the pledging of the following men:

Homer Dorman, Dormont, Pa.; William Schmidt, Dormont, Pa.; Stephen Lewis, Columbus; Donald Cross, Portsmouth; Lynn Burke, Paulding; Arthur Cadot, South Webster; George Blaho, Cleveland; Edward Dody, Cleveland; William La France, Toledo; William Algire, Toledo; Malcolm Kaiser, Oberlin; V. King Parsons, Chardon; Shadel Saunders, Columbus; Richard Beymer, Caldwell; Clifford Coyswell, Marietta; Norman Valodin, Portsmouth; Robert Marsley, Mineral City! Clinton McKnight, Altoona, Pa.; Ronald Taylor, Altoona, Pa.

Beta's football men have opened this season with Burke, a veteran of last

year's undefeated team, at end. Colvin and Morse are showing promise of varsity material. Pledges Jeffery and Collins are also sure of first team positions—Jeffery at tackle and Collins at end. All of these boys were in the line-up of the opening game with Wilmington, in which Ohio won, 27 to 0.

Three men are out for freshman football. Pledges Dorman at end, Parsons at Tackle, and Lewis at quarter are doing well daily in scrimmage.

Intramural indoor baseball prospects look good this year, with Pledges Cadot and Algire piloting the prep team.

Plans for the formal initiation of Pledges Collins, Jeffery, and Morse, who have completed their time requirements, were scheduled for the week of Oct. 12. Other plans included an opening house-party on Oct. 4.

Alpha Freshmen Secure Trophy; Chapter Pledges Large Group

Miami University

By RICHARD BRANDON

OXFORD, OHIO.—Alpha men are looking forward eagerly to the completion of the new chapter house which is now under construction on the new Fraternity Square.

One of the largest pledge classes in recent years was obtained this year as a result of strenuous efforts on the part of Cecil Moyer and his pledging committee. These men are:

John Anthony, Whiting, Ind.; Elmer Bretschneider, Solon; Elmer Barrett, Chillicothe; Edward Baxter, Cleveland Heights; Harold Christensen, Cleveland Heights; Edward Cligrow, Mechanicsburg; Walter DeHaven, Dayton; Cornelius Csepke, Niles; Charles Earnshaw, Okeana; Forest Eicher, Sidney; Oliver Frederick, Osborne; Edward Kirkham, East Liverpool; John Kramer, Batavia; Edgar Lautzenheiser, Eden; Lee Mosssteller, West Chester; Burdett Snyder, Liberty, Ind.; Paul Wright,

West Alexandria; William Wagner, Cleveland; Elmer Waldmeyer, Ft. Thomas, Ky.; Wilbur Shoemaker, Findlay; Charles Gerland, Dayton; Law Kelley, Hamilton; Robert Long, Dayton.

The pledges from last year who are eligible for initiation this fall are:

Wayne Althaus, Findlay; Blanton Dick, Phoenix, Arizona; Harvey Eagle, Newark; Gerald Glidewell, Oxford; Howard Larick, Earl Lokey, Donald Packer, William Peters, Cleveland; Richard Schotten, Lorain; Charles Shrader, Waverly; Henry Stauffer, Edgerton.

Donald Frederick, who was awarded an exchange scholarship to study chemistry in Munich, Germany, has returned to Miami.

ALPHA GETS HONORS

Recognition chapel at the close of last year showed Alpha men again among those receiving honors. Oliver Amos was appointed editor of the *Miami Student*, bi-weekly campus newspaper. Mathematical prizes were won by Everett Cox and Richard Brandon. Alpha freshmen again won the scholarship cup for first year men; while the actives ran a close second to Beta Kappa for upperclass honors. More than sixteen Alpha men were listed on the honor rolls of the university for the second semester.

In fall intramurals Alpha will be represented by strong teams in speedball, playground ball and cross country. Hutchison and Reed, actives, and Larick, pledge, are out for varsity football and are making strong bids for tackle, end, and guard positions respectively. Pledges Barrett, Cligrow, and Csepke are among the best on the freshman squad.

Alpha Iota Group In New Home University of Pennsylvania

PHILADELPHIA, PA.—Alpha Iota Chapter is now located in its new home

THE LAUREL OF PHI KAPPA TAU

at 3902 Locust street. The formal opening date has been set for November 8.

President Andre reported an excellent time at the national convention held at Asheville. Charles Seaman, the alumni delegate, and Hiram Bamberger were also present.

Gilyard, who was out of school a half year, is back in the house again.

Schumann and Zimmerman are members of the University Glee Club this coming year.

Alpha Sigma Active on Campus Colorado State Agricultural College

By HARLEY LAIRD

FORT COLLINS, COLO.—The following men became members of Phi Kappa Tau on September 17:

Paul Green, Morse Froman, Milan Gadd, Collins Gadd, Keneth Dixon, Curtis Hagler, Fayette Stansbury, Robert Bashor, and Ralph Gelvin.

We have pledged twenty-six men this fall including Russel Stewart, George Barnicoat, Robert Green, Charles Green, Keneth Kyger, Morris Stephens, Ivan Obercamper, Grover Clark, Stanley Lester, James McIlvaine, Ben Brooks, Clifford Turner, George Burges, Edward Jones, Frank Hansen, Rudy Choelka, Champ White, Art Hayden, George Johnson, James Gearhart, Millard Huey, Earnest Lindgren, Jean Jarrell, Harold Smith, James Corcoran, and Harold Burkhart.

Albert White, a junior this year, made a remarkable showing at the opening game of the season. Joe Frescoln, who is a sophomore, made a name for himself by his long punts on the freshmen eleven last year. Gram Howard, a junior this year, has been elected captain of the 1931 baseball team and is also advertising manager of the *Rocky Mountain Collegian*. Norman Ritchie, a sophomore, is also active on the *Collegian* staff, writing the weekly humor column for the paper. Earl Collart,

who graduated last spring, was selected from the senior class as a member of $\Phi K \Phi$.

Alpha Sigma Chapter had a dinner for the members of ΦH September 13. They held a meeting at the chapter house with about twenty-five mothers present.

Alpha Delta Pledges Fine Group Case School of Applied Science

By IRVEN PRETTYMAN

CLEVELAND, O.—Alpha Delta opened another school year by pledging a fine group of men. Every man was active in high school and in the upper third of his class scholastically. The freshmen are:

Robert Gott, Wellington; Kenneth Green, Euclid; Jacob Jost, Cleveland; Dale Wiseman, Youngstown; Albert Tober, Cleveland; Albert Courtney, Geneva; Alexander Keyl, Cleveland; Thomas Johnston, Cleveland; and William Weir, Cleveland Heights.

The sophomores are:

Robert Burnette, Mexico City, Mexico; Lloyd Hicks, Cleveland, brother of two Phi Taus; Powell Schmauch, Ashland, Ky.; and Lawrence Kubal, Cleveland.

Walter Webb has joined us from Epsilon. He and William Ferguson play in the new Case band.

Alpha Delta's athletic standing is firming, with Frank Cerness, end, and Kenneth Slater and Dan Rowland, guards, on the varsity football team; Mauno Bachlund, sophomore football manager; Kenneth Green, candidate for freshman manager; William Ferguson, cross country team; Donald Hicks and Powell Schmauch, wrestling hopes of the school; Edward Mansfield, president of $\Gamma \Phi$ with Powell Schmauch as prospective member; Matthew Fenner, Irvan Prettyman, and Marcus Mauntler, early varsity basketball practice; and Brown Saveland, swimming team.

The chapter house has been thoroughly cleaned and redecorated through the loyal work of the newly formed Phi Eta.

Chi Chapter Opens Rush Season

North Carolina State College

By F. R. NAIL

RALEIGH, N. C.—Chi is very fortunate this year in having all but three of their old members registering for the first term. We are expecting the other three men to return for the winter or spring term. Among those returning was Godfroy, who was not with us last year.

Rushing season has just opened and our prospects for pledges this year are very bright. Our alumni have been very helpful in sending in a large number of recommendations. We opened our campaign with a house dance which was very successful in that we had a large number of new men present and all seemed to enjoy themselves very much.

Dellinger, letter man in football last year, reported back early this fall and has shown up as a strong and powerful backfield man on the Wolfpack eleven. Due to a temporary injury to his shoulder he did not get to play in the opening game but was back in the line up for the next contest.

Taking up their duties in campus activities this year for their first term of office, we have Summey as president of the Pan Hellenic Council and Creech as circulation manager of the college paper.

Alpha Theta Chapter Active on Gridiron and Campus

College of William and Mary

WILLIAMSBURG, VA.—Alpha Theta had a good start in sports with Douglas constituting a brick wall in the line of William and Mary's powerful eleven.

Ferrell is also looking well in the center position. Harkins and Wilson are furnishing keen competition for some of the regulars.

Owing to the custom established on our campus last year, rushing will again be deferred until after Feb. 1. In the meantime, however, we are not idle, for every man is wide awake on the lookout for Phi Tau material.

We regret that some of our men did not return to William and Mary this year. Louis Negron is this year attending the University of Porto Rico. E. P. Simkins is now working on his master's degree at Columbia.

We are glad to welcome back Walker Jackson and Ruffin Winfree, who did not attend school last semester but have returned to continue their studies.

Our field of representation in campus activities includes Pruitt, president of the Debate Council; Cochran, vice president of a literary society; Scammon, sophomore representative to the Honor Council; Rux, on the Auditing Committee; Beard, managing editor of the *Flat Hat*; and McLawhon is to represent William and Mary in the State Audition of the Atwater Kent Contest.

Six Xi Members on Grid Squad

Franklin and Marshall College

By M. L. LEYMEISTER

LANCASTER, PA.—Six Phi Tau's reported for duty on Franklin and Marshall's football squad and all are now occupying prominent places, among them being Big Bill Britton who last year was given "The Most Valuable Player Award."

Entertainment was planned by Xi Chapter for members of Eta Chapter, following the annual football clash between Franklin and Marshall and Muhlenburg on Oct. 25.

Zweizig and Frantz spent the past summer months touring Europe.

Zehrer, who has been playing regular

right end on F. and M.'s varsity and who has just recovered from a foot injury, will be out of F. and M.'s lineup indefinitely as a result of a broken collar bone sustained while practicing recently.

Many of the Old Grads returned recently to see the opening game with St. John's, including Grand Councilor Gantt, Bordner, Stine, and Brumbaugh.

Yoder the outstanding distance man on the F. and M. varsity track team has been elected captain of the cross-country team for the coming season, and Leymeister has been elected manager of the varsity tennis team.

Mantz, Klechner and Toth are members of the F. and M. Glee Club.

Shertzer is at Penn State working for his master's degree. Eshelman is attending Jefferson Medical School, Philadelphia.

Alpha Xi Pledges Thirteen

West Virginia University

By ROBERT D. RIFFE

MORGANTOWN, W. VA.—Alpha Xi has started the school year with thirteen men wearing Phi Tau pledge pins. The pledges are:

Glenn Baker, Cameron; Herman Lemasters, Clarksburg; William Jeffers, Charleston; Bruce Lambert, Mt. Hope; Robert Conn, Morgantown; Nevin Hoy, Oil City, Pa.; Vincent Anwyll, Fairmont; Louis Polen, New Cumberland; Lyall DeVault, Morgantown; Ernest Kuhary, Bramwell; Frederick Polen, New Cumberland; Howard Leedy, Powhatan; James Leonard, Berwind.

Joe Kavanaugh, B. Jordan, and B. R. Hocking from Nu Chapter and W. Riley, Alpha Gamma, paid us a visit while on their way to Mexico City after spending the summer months touring through the eastern states.

Alpha Xi stood fourth from the top in scholarship among the fraternities in the Interfraternity Council.

Dana Wells is an instructor in the department of geology at West Virginia University this year.

Several improvements have been made to the chapter house, among them being the addition of new rugs, the enlargement of the seating capacity of the dining room, and the installation of a large Frigidaire.

The regular program of intramural sports has not been started yet, but Alpha Xi has the brightest prospects with the addition of several pledges who show marked athletic ability. Our annual football game with $\Phi K \Sigma$ fraternity resulted in a scoreless tie.

Alpha Mu Enjoys Very Successful Pledging Season This Year

Ohio Wesleyan University

By JOHN MASON

DELAWARE, OHIO.—Alpha Mu had a successful pledging season this year. The sixteen pledges are M. Brandon, Newark; Blair Diffenderfer, Greentown; R. A. Caruthers, Akron; H. Sears, Taft, Cal.; Wm. Menough, Wellsville; Wm. Mussen, Cleveland Heights; John Mikuluk, Lakewood; O. Cash, Independence; G. Shaw, Rockbridge; J. Cooper, Dayton; J. McVicker, Chillicothe; P. Genter, Norwich, Conn.; W. Morrow, Youngstown. The chapter roll including the freshmen is forty-five.

Alpha Mu is operating two houses to capacity. The active chapter members occupy the house located on Lincoln avenue. The house which became ours as a result of the merger last spring is being used as a freshman dormitory. It is in this house that the pledges live. Several competent upper-classmen also live there to supervise the freshmen. Meals are served at the other house for all actives and pledges.

CHAPTER IN MUSIC

Musicians are plentiful at Alpha Mu this year. In the recent try-outs for the Glee Club W. Kent, C. Hammond, and

THE LAUREL OF PHI KAPPA TAU

Tommy Lee were chosen. W. Ehrich and J. Mason were elected to the Singer's Club. Alpha Mu men play in the college band and orchestra.

Dean Gordon is playing center on the Wesleyan football squad. In the opening game of the season, he played three of the four quarters.

John Mikuluk, a pledge from Lakewood, O., is holding on tightly to the end position of the frosh grid team. Incidentally, John made the highest I. Q. in the intelligent test given to all freshmen.

Bruce Fields and Al Roberts are on the Wesleyan cross-country team.

Upsilon High In Athletics; Pledge Roster Numbers Twenty-six

Nebraska Wesleyan University

By MASON BRIDGES

LINCOLN, NEBR.—Again the Phi Taus pledged the lion's share of the freshmen at Nebraska Wesleyan. Twenty-six men were pledged by Upsilon. The men are:

Harry Appelget, Sprague; Herbert Alpers, Clatonia; Lyle Anderson, Lincoln; Ray Anderson, Burwell; Paul Allyn, Lincoln; Myron Bickel, Lincoln; Gordon Birkey, Lincoln; Lloyd Boone, Franklin; Dale Barde, Lander, Wyo.; Talbet Edwards, Elmwood; Warren Guthrie, Syracuse; Lloyd George, Lincoln; Arthur Henderson, Lincoln; Don Harvey, Lincoln; Hollis Johnson, Fullerton; Kenneth McCormack, Lincoln; Henry Menke, Beatrice; Paul Pullium, Lewellan; Edward Paul, Lincoln; Douglas Richardson, Lincoln; Kenneth Reid, Pilger; Lynn Trombla, Lincoln; Russel Trott, Lincoln; Donald Winship, Lincoln; Warren Parker, Lincoln; and Gilbert Powers, Lincoln.

CHAPTER STRONG ATHLETICALLY

As usual Upsilon is well represented in athletics. Ross Bonham is captain of the 1930 football team at Ne-

braska Wesleyan. Bonham is supported by the following letter men:

Waldo Nichols, Lyle Briggs, Vernon Clemens, George Miller, Gerald Thompson, Robert Gibb, and Mason Bridges. Other men who were picked on the varsity squad include Henry Menke, Don Winship, Russel Trott, Verne Gowe, Bruce Fitz, and Robert Hart. With the exception of Menke, Winship and Trott, these men are all veterans.

Harry Appelget, Dale Coonley, Ray Anderson, and Max Smith are reserve members of the football squad.

John Ward is captain of the basketball team for the coming season. Ex captain Stan Johnson, Burns Fellers, Robert Gibb, Max Smith, and Bruce Fitz are back to help make the coming season a successful one.

Lyle Briggs the track captain for last year is back in school. Philip Reid, Gerald Thompson, Marvin Beers, and Stanley Johnson, are the track letter men that are back.

Marvin Beers is president of $\Theta A \Phi$. Warren Guthrie is also a member of this organization.

At the fall tryouts for the dramatics club, four Upsilon men were admitted. They are Robert Gibb, Robert Nicholas, Lynn Trombla, and John Ward.

Warren Guthrie is president of $\Pi K \Delta$, forensic fraternity. Guthrie is also editor of *The Coyote*, the year book.

Mothers' Club Redecorates Eta House; Four on Team

Muhlenberg College

ALLENTOWN, PA.—When the members of Eta returned to their home this fall they found that the hardwood floors had been newly stained and polished; the card rooms had been decorated with new rugs and the floors had been scraped and varnished; the kitchen had been painted ivory, and new linoleum had been put on the floor. In the second floor rooms the furniture was newly

THE LAUREL OF PHI KAPPA TAU

painted in a cheery color, rugs and curtains, bed spreads in harmony, and freshly varnished floors in all the rooms. Our very active Mothers Club, Mu Chapter of the Phi Eta sorority was responsible for the work. No greater aid could have been anticipated for the coming rushing season.

The College sent its summons letters to four Eta men this fall, asking them to report for football practice. These were Charles and George Gerner, Charles Rhoads, and William Boone. Charles Gerner won his letter last year and this year he is playing center. His brother, George, is playing on one of the ends, and he has already proved himself one of our best defensive men. Rhoads will very likely play guard, and Boone tackle.

Nu Members and Pledges Are Busy In Campus Work

University of California

By WILLIAM T. G. BECKETT

BERKELEY, CALIF.—Nu Chapter announces the pledging of Donald Babbitt, Lee Borne, Cornelius Connell, Thomas Fitzpatrick, George Jamieson, George Kemp, Hugh McKenzie, Al Parker, Munroe Strong, Tyler Sidener and Donald Woodington.

Our annual pledge dance, held September 6, at the chapter house, was one of the most successful pledge dances ever held. Our Mothers Club honored us with a card party.

Phi Tau's representation in campus activities is greater than for sometime past. President Harvey Granger still holds bowman's position on the varsity crew and is a member of $\Phi\Phi$, the California Big C Society and of Winged Helmet, junior men's honor society. Marlin Haley, former chapter president and 1930 delegate to the national convention, is ex-president of the Junior Class, California Rally Chairman, and

a member of $\Delta\Sigma\Pi$, commerce fraternity.

Clarence Granger will play his third year of varsity basketball and is a new member of $\Phi\Phi$. Jack Fingland, who came to us from Alpha Kappa Chapter, is last year's captain of the ice hockey team and a member of $\Phi\Phi$. Bob Pattison is a member of the Rally Committee and of $\Delta\Sigma\Pi$. Jack Holcombe, former sophomore manager of the *Blue and Gold*, university year book, is a member of the varsity debating team and of Senate Debating Society. Thomas Townsend, Jr. is junior editor of the *Blue and Gold* and a member of Winged Helmet. Theron Wright and Hal Farquar are training hard already for the spring track meets.

PLEDGES ACTIVE

Among the pledges lies much of our present as well as our future glory. Paul Markel is doing fine work in varsity football practice. Jimmy Roach is a member of the Rally Committee. George Kemp is making a great fight for freshman football honors and is prominent in freshman class affairs. Lee Borne is both a freshman track and basketball man. George Jamieson and Al Parker are on the first frosh crew. Al Holcombe is sophomore manager of the *Blue and Gold*. Ty Sidener played four years of varsity football with the University of Santa Clara and was captain of the team in his last year.

Zeta Rushing Is Successful

University of Illinois

By C. GRAYDON MEGAN

CHAMPAIGN, ILL.—Zeta Chapter had one of her most successful rushing seasons this fall in pledging sixteen men from the freshman class.

Following is the list of the men:

H. Baker, who comes to us from Morgan Park High in Chicago, Al Benko is the young brother of a Zeta Chapter Phi Tau. Bill Budd is a product of

THE LAUREL OF PHI KAPPA TAU

Oak Park High. Bob Davis is a fine football prospect for the football team. Don Ellis, Harry McGinnis, Bob Oneill, and Ed Reynolds are all Chicago boys. From Kewanee comes Chalmer Lewis and Don Richards. Jim Millar, Decatur, Paul Rogers, Geneva, Oliver Russell, Salem, Murray Skinner, Galesburg, and Logan Scott, Campbellsville, Ky., complete the list.

Phi Kappa Tau entertained the new pledges with an informal dance in the chapter house on October 10.

Four Pledged At Rho Chapter

Rensselaer Polytechnic Institute

By PAUL E. VEGA

TROY, N. Y.—Rho Chapter pledged four men, including Andre Rubin, Ridgewood, N. J.; Robert Blakely, Ridgewood, N. J.; Aaron Sluyter, Paterson, N. J.; and Walter Elston, Jr., Kingston, N. Y.

Edward Bond, William Tinney, and Reid Robinson are members of the Dramatic Club.

Alanson Rogers, Duane Elmore, Richard Burt, and Pledge Harry Meyer are on the soccer squad.

Floyd Mitchell and Paul Vega are members of the Glee Club while Allan Walker and Harold Schlieder are on the Transit Board.

The house has been redecorated and improvements have been added to make it more attractive and comfortable.

Iota Leads Scholastically; Twenty Are Wearing Pledge Pins

Coe College

By DONALD MILLER

CEDAR RAPIDS, IOWA.—Iota Chapter has started the school year off in an impressive manner.

When the scholastic report of the college was given the Phi Tau's were rank-

ing number one. Not an active in the house had an average below "C".

With the close of the rushing season we had the most pledges on the campus with twenty men.

During the summer months the interior of the house was entirely redecorated. The kitchen was moved to the basement and an attractive room was made for the house mother.

Iota opened the social season by having the first house dance of the season.

The Chapter was very pleased at the acceptance of our invitation to Major Warren to be a faculty adviser. This is Major Warren's first year on the Coe military staff.

The men pledged are as follows:

John Metcalf, Douglas, Rundquist, James Dawson, Emil Zela, Murphy Davis, Frank Humphrey, all of Cedar Rapids; Arthur Nordstrom, Kyle Keith, Jack Hilton, all of Algona; Robert Elliot, Richard Conner, Roland Stover, Coral Fenner, all of Olwein; Marvin Hansen, Russell Smith, Edward Quirk, all of Odebolt; Russell Natterstadt, Esterville; Fred Sawin, Edinburg, Ind.; Ted Houck, Jessup; Everett Russell, Boone.

Pledge Twelve at Alpha Epsilon

Kansas State Agriculture College

MANHATTAN, KANSAS.—A large number of the members of Alpha Epsilon chapter got together at the chapter house on July 26, for a summer rush party.

Twenty-nine men returned September and at the end of rush week had obtained twelve pledges, making a total of forty-one.

We wish to announce the pledging of the following men:

Norman Nelson, Jennings; Charles Watson, Osborne; Loran Balderson, Wamega; Paul Snyder, Elkhart; Orville Young, Clifton; Clair Palmer, Kincaid; Paul Neuswanger, Osborne; Orville Johnson, Pomona; Merritt Royer, New-

THE LAUREL OF PHI KAPPA TAU

ton; Adrain Krause, Hutchinson; Lawrence Darnell, Osborne; and Howard Owens, Dighton.

Intramural sports opened with horse-shoes and soccer. We have been runners-up for the soccer championship the last two years, losing it by only one point both times, and we are going to do our best to make that point this year. We held our first practice recently and prospects look good for a winning team.

Five Varsity lettermen are back this year. Howard Elwell and Marvin Morgan in track, Lee Toadvine, the cross-country captain for the coming season, John Warner, a second-year letterman in wrestling, and Willard Balderson, a member of the swimming team.

Norris Meek, a member of the rifle team a few years ago, is back in school this year.

Four men, Mohney, Burghart, Compton, and Kewley are on the editorial staff of the *Kansas State Engineer*, with Mohney as editor.

Psi Has Successful Rush Week When Fifteen Are Pledged

University of Colorado

By MAYO TENERY

BOULDER, COLO.—Rush week was successful in that fifteen men were pledged. These men from various parts of Colorado and Wyoming were entertained with dances and dinners. A dance was held at the chapter house, and about forty rushees were present. A rush-party was held in the latter part of the summer at the mountain cabin of one of the members, John Winters; about twenty rushees enjoyed the festivities. The following men were pledged:

Carl Combs, Canon City; Wylie Braggins, Denver; William Dwinnel, Pueblo; Don Littleton, Salida; Lyle Grimsley, Lamar; Lawrence Threlkeld, Denver; Ralph McKenzie, Golden; Joe

Gulich, Denver; Allen Redmond, Eagle; George Shema, Fairplay; Bruce Bauer, Boulder; Eugene Marks, Boulder; Norman Cobb, Boulder; Sanford Moore, Sheridan; Harold Albright, Rawlins, Wy.

Oliver Stratton of Mu Chapter has entered the University of Colorado this fall. Stratton was voted into the chapter and is now living in the house.

Cameron Coyle, Psi, has moved to Los Angeles, California, where he will work with an insurance company. Coyle is past president of the chapter.

J. Earl Schlupp and Charles Staat won the intramural tennis doubles championship last spring in the tournament held by the university for the twenty national fraternities represented on the campus. They played six matches without defeat. This cup is the fourth of the seven traveling cups, given in intramural sports last year, that the chapter won.

Three of Psi Chapter's new pledges, Sanford Moore, Norman Cobb, and Wylie Braggins, are out for freshman football.

J. Earl Schlupp and Rob Roy Burgie are out for varsity football.

Late College Opening Delaying Activities at Alpha Omicron

Lafayette College

By L. S. SERFASS

EASTON, PA.—Because of the late opening of college, the Lafayette chapter of Phi Kappa Tau is not yet fully under way.

Just a few days after college opened the dining room was redecorated, the porches painted, and the entire house gone over to present a fresh appearance for the coming year. Gene Basile, who dropped out of college after he was initiated two years ago, is back again and offers to pilot some of the fellows in a Pitcairne transport plane to Atlantic City to see the Lafayette-W-J. football

game in the municipal, indoor stadium. Russ Miller, as a member of Calumet, the sophomore hazing society, is making the frosh watch their step.

There are three Phi Taus on the staff of the *Lafayette*, the undergraduate paper, Jim Segraves is an assistant managing editor, Elmer Hunter is on the business staff, and Shime Serfass is the alumni editor. During the summer Paul Markarian did research compilations for the Pennsylvania Power and Light Company at Hazelton. His subject was plug type fuses, and a publication of his work has been sent out to all the agencies of the P. P. and L. throughout the state.

Alpha Nu Pledges Ten Men During Iowa Rushing Period

Iowa State University

AMES, IOWA.—Alpha Nu has started the year off right with all of the actives coming back ahead of time and getting the house in shape for rushing. During rushing time a large number of men were entertained and as a result Alpha Nu has ten new pledges. They include Marion Den Beste, Archer; Donald Bell and Jack Taylor, Tabor; Clifford Parker, Hawkeye; Albert Bradbury, Providence, R. I.; Fred Radakovitch, Jack Godby, and Roy Gilman, Earlham; Nathan Edwards, Polk City; and Russell Boeker, Talula, Ill.

Several of the old men returned to school this fall, among the actives are Cliff Shaner and George Cole and among the old pledges were Oldenburg and Koritz of Zeta Chapter.

The first intramural competition started Oct. 7.

Pledges Edwards and Den Beste are interested in the musical tryouts, while Pledges Gilman and Radakovitch are out for football.

Social activities started Oct. 17 with a fireside, followed by the homecoming dance on Nov. 1, which is the big dance

of the year. Along with this dance is the exterior decorating of house in competition with the other fraternities for which each year there is a prize given by the homecoming committee.

Alpha Lambda Chapter Pledges Twenty Men; Group Active

Alabama Polytechnic Institute

AUBURN, ALA.—Twenty men were pledged at Alpha Lambda Chapter. It is the consensus of opinion that they are the best we've ever had. One is Junior Tennis champ of Alabama, another is cheer leader, another was one of the four boys to go to Washington from this state to interview President Hoover, another is fighting for No. 1 position on the Freshman tennis team.

This year old men as well as new are responding to the call of extra curricular activities. We have men represented in all spheres of activities except football. We have an average of over three activities per man.

Alpha Lambda grades, which were low last year, are on the upward climb.

Gamma Men In Campus Work

Ohio State University

By CLARK I. WITWER

COLUMBUS, OHIO.—The majority of Gamma members returned to participate in rushing activities and the chapter has enjoyed a great deal of success in the results of their efforts. Activities toward the securing of new men have not let up and other worthy prospects are in view. Activities during the week consisted of smokers, bridge, and other forms of entertainment; and as a finale on Saturday night, September 27, the chapter gave a dance for the new men. The following men have thus far been pledged:

Robert William Reinicke, Dayton; Merle Henry Ohlemacher, Milan; Ralph

W. Bachman, Woodsfield; Albert E. Gherke, Defiance; William Henry Smith, Sandusky; Edward S. Brown, Defiance; Wayne R. Lowry, Columbus; Charles F. Holek, Canton.

CAMPUS ACTIVITIES

Among the men who will spend much time engaging in campus activities this year are:

Brooks A. Paulsey and Harold R. Ervin, varsity basketball; Clarence Crow, varsity wrestling; George Kellogg, Scarlet Mask and Stroller's work; Alfred J. Philby, Editor-in-chief of Ohio State's campus humor magazine, the *Sun Dial*; David Haskell, tennis squad; Robert Reinicke, Student Senate and baseball; William H. Smith and Wayne R. Lowry, polo; Albert E. Gherke, football manager; H. M. Snyder, Scarlet Mask band.

Alpha Zeta Chapter Underway

Oregon State College

By PAUL G. ALLEN

CORVALLIS, ORE.—Alpha Zeta Chapter announces the pledging of two men, Charles Conaway, Medford; and Milton Nolte, Lakeview. Classes did not start at Oregon State until early October.

Conaway, who has played trumpet in the championship Medford high school band for the last three years, expects to play in the Cadet band here. Nolte is a brother of Lorence Nolte '27, who is employed by the American Dry Milk Institute in Chicago.

Pledges Gordon Higgins and Earl Oliver, both of Medford, returned to school this year. Higgins, who attended The Southern Oregon Normal school last year, is a member of the polo squad here and should do big things this year. Oliver left school last winter term to work on a power line construction job in Montana.

James Murray '30, is employed as a student engineer by the American Blower Company in Detroit, Michigan.

Forrest Pickett '30, is working for the Standard Oil Company in Medford, Ore., and Donald Bailey '30, is working for the American National Bank in Klamath Falls, Ore. Paul Allen ex-'30, who is working for the Portland Oregon *Journal* in Corvallis, will not be in school this term but expects to return next year.

Delta Group Pledges Twenty-two;
Strong In Athletics

Centre College

By ALLEN HAMILTON

DANVILLE, KY.—Delta opened the season by pledging twenty-two men including the following:

Karl Kress, Carnegie, Pa.; Clayton Barker, Waterbury, Conn.; Wesley Carty, Brooklyn, N. Y.; Tommy Thompson, Buford Saul, Franklin, Ohio; Larry Swart, Rochester, N. Y.; Curtis Denny, Somerset; O'Laery Meece, Somerset; Dennis Saylor, Harlan; Chamberlain, Louisville; Carty, Pineville; Noel Fraser, Pontiac, Mich.; Andy Hasara, Verden, Ill.; Montgomery Hicks, Chicago, Ill.; Buck Moody, New Castle, Ky.; Healy, Paris, Ky.; George Barton, New Castle, Ky.; Charley Barksdale, Danville; Will Hawthorne, Lawrenceburg; Cassidy, Nicholasville; Colman Ellis, Danville; and Sampson Knuckles, Beverley.

Kress, Meece, Saylor, Chamberlain, Moody, Healy, Barksdale, Hawthorne, and Cassidy are all out for freshman football. Hasara played regular varsity halfback all last season, while Barton is now playing at end. Walter Grabruck captains the varsity this year and we are expecting much from this All-State halfback. Bob May and Martin Kottler, both varsity halfbacks and Ted Boyle, the regular center are hoping for a most successful season.

In the intercollegiate track meet of Kentucky, last summer, Hasara won the

THE LAUREL OF PHI KAPPA TAU

100 and the 220 yard dashes, tied record for the broad jump, and he and Lane were on the half mile relay team which won the event.

Elwood Humphries was presented with a prize at commencement, given to the best all around freshman in Centre College last year. Humphries played as regular on the freshman basketball team and at the same time keeping up with a B-plus average in his studies. Kottler and Humphries will try out for berths on the varsity basketball team this fall. Captain Grabruck and Bob May of the football team are regular forwards on the Centre basketball squad.

Hurbert Meyers '30, honor student, has recently been employed to fill the office of Director of Educational Publicity of Centre College.

Delta won the intramural championship of Centre College for the year of 1930. After winning both free throwing and baseball first places, we swept through the tennis tournament without losing a single match.

Omicron In New Home

Pennsylvania State College

By R. C. STEINMETZ

STATE COLLEGE, PA.—Omicron Chapter is now established in a new house located at Fairmount and Garner streets. The new home is one of the finest on the Penn State campus and is the result of the co-operation of our alumni with our advisor, Sheldon C. Tanner. Tanner has been tireless in his efforts since 1927 to make the new home a possibility by 1930.

D. L. Markle, professor of electrical engineering at Penn State designed an indirect lighting system used throughout the house, casting a practically shadowless light. Markle also purchased and installed the fixtures, giving Omicron the latest development in lighting engineering.

Omicron is now in the midst of rush-

ing season and their home has been proudly exhibited to over one hundred freshmen. Several upper classmen have been pledged but the rushing code of Penn State does not permit the attachment of the button to a freshman until the close of the rushing period.

Phi Chapter Strong On Campus

Bethany College

By DONALD B. DALLAS

BETHANY, W. VA.—Phi came thru a strenuous rushing season with the following pledges: Charles Rush, Hanoverton, Ohio; Ray Phillips, Erie, Pa.; Earnest Korb, Johnstown, Pa.; Nicholas Demerath, Winchester, Ill.; Kenneth George, Connellsville, Pa.; James Lenhart, Canton, Ohio; James Scullion, Salem, Ohio; Andrew Johnson, Long Island, N. Y.; James Corsaro, Connellsville, Pa.; Charles Lewton, Salem, Ohio; Wilfred Hoffman, Buffalo, N. Y.; and Paul Napier, Pittsburgh, Pa. In this group we find debaters, musicians, valedictorians, and athletes. Pledge Corsaro has already made a name for himself on the campus as a saxophone player and Scullion and George give promise of being football lettermen before the season is over.

Three men of Phi are holding influential and honorary positions on the Bethany campus. Thomas Dailey is editor of the *Collegian*, Bethany's bi-weekly. Michael Kasarda is captain of the football team and Malcolm Rush is captain of basketball.

Phi is well represented on the football field. Phi Taus starting Bethany's first game were Capt. Michael Kasarda, Ralph Buttermore, Fred Vorassi, Emil Dupke, and Carroll Fisher.

Theta Chapter Pledges Ten Men

Transsylvania University

LEXINGTON, KY.—Theta Chapter pledged nine men, and carried one over,

THE LAUREL OF PHI KAPPA TAU

making a total of ten men. They are:

Woodrow Lester, Liberty; Fred Carman, Liberty; Walter Greenwood, Brooklyn, N. Y.; Albert Greenwood, Brooklyn, N. Y.; Gabe Davis, Corydon; Paul Henry, Mount Sterling; Bernard Tackett, Shelbyville; Darrel Norwood, Elkhart, Ind.; Charles Darsie, Cynthiana; William Highfield, Lexington.

Edwin Ewers, who graduated from Theta two years ago, is now attending the Western Reserve Medical School, and is a pledge to A K K.

Allen, is coaching and teaching at Ironton, Ohio. Tanner is teaching in the Kentucky mountains beyond Harlan. Hogan is doing post graduate work at Transsylvania.

Felix Trader captains the Pioneers this year. We have Bennett, Miller, Crafton, and Watkins aiding him on the team.

Two of Theta's pledges are out for the freshman football squad.

Lambda Has Tennis Captain

Purdue University

By J. H. CARTER

LAFAYETTE, IND.—Lambda Chapter has another varsity captain in Jack

White, the versatile Kentuckian. Although only a junior this year, he was elected captain of the tennis team for 1930-31.

The fall pledge dance was held October 18 at the chapter house.

Pledges Renier, Jockish, and Engstrom are on the freshman varsity football squad.

Phi Tau may win another baseball trophy this fall. The chapter team is now in the semi-finals of the intramural contest, and have a good chance of winning the tournament.

Steinmetz and Pledges Pfeffer and Lentz, are still undefeated in the all-university tennis tournament, in the third from last round. Engstrom, Brueckner, Scheurer, and Brumbaugh are keeping Lambda in the inter-fraternity golf meet, and won five matches.

New pledges are G. M. Engdtrom, Michigan City; W. H. Utt, Vincennes; C. J. Pfeffer, Lebanon, Ill.; R. A. Jockisch, Peoria, Ill.; T. C. Fitch, O. B. Nollin, Lawrenceburg; A. M. Smith, Lisbon, O.; W. M. Green, J. J. Chapp, F. L. Scully, J. H. Crossman, Chicago; C. Popejoy, Delphi; H. J. Waggle, P. W. Dyke, East Liverpool, O.; W. R. Rothenberger, Frankfort; L. R. Lentz, Indianapolis; W. S. Renier, Madison, Me.



Graduate Council News

Alpha Kappa Alumni News

By JOHN HARRINGTON

DURING the past session, Melvin Dolson was elected to $\Phi \Delta K$ at the University of Arizona. Eugene Giles is working towards his doctor's degree in Oregon.

Lee Fanning was married to Elizabeth Grieve, daughter of Dr. & Mrs. M. B. Grieve of Spokane, Washington, on September 20th. Mrs. Fanning is a member of Delta Zeta. For the past two years Fanning has been with the Westinghouse Electric & Manufacturing Company at Pittsburgh, and at present is an engineer in the marine control department.

Charles Plomasen is now a member of the faculty at Rochester Athenaeum & Mechanical Institute. The manual training departments in the high schools at Coville, Eatonville, and Walla Walla, Washington, are in charge of Aubrey LaPlante, Allen Ellingson, and L. O. Myers respectively.

Alpha Graduate News

By HUGH C. NICHOLS

THE thing which is most vital to Alpha members at the present time is the construction of the new Chapter House, which is being erected by The Berry McAlester Chapter House Company of Columbia, Mo., at a cost of about \$46,000 and upon which the work is rapidly progressing. The contract calls for the completion of the house by March 1st, 1931 and when completed it will be one of the finest and best equipped fraternity homes upon the Miami campus. The erection of this house marks the culmination of

several years of effort and endeavor towards this end and it will be a structure of which the active chapter and Graduate Council may feel justly proud.

Alpha Delta Graduate News

By JOHN F. SCHNEIDER

GRADUATE council get-togethers at the fraternity house on Monday evenings are becoming very interesting, especially as the brothers return from glorious vacations.

Henry C. Christian '29 recently returned from Europe where he attended the Manxmen Convention on the Isle of Man. During the balance of the summer Henry visited England, Wales, Scotland and France.

Bob's former roommate, Monroe Bahnsen Case '29, is now at Western Reserve University, studying for his masters degree.

Eta Graduate Council News

By HARRY P. C. CRESSMAN

HARRY Repp '28 is teaching science at the Ossining, N. Y. High School. Jesse Begel '30 is on the staff of the Woodstown, N. J., High School.

Edwin Swint '30 is employed by the Bell Telephone Company of Pennsylvania.

Carl Heffner '30 is coaching and teaching the sciences at the West Pittston High School.

Emil Mesics '28 is the newly elected principal of the West Pittston High School.

R. Harris '28 is teaching in Upper Darby, Pa.

S. Kleckner '20 is teaching on the staff of the Lansdowne High School.

THE LAUREL OF PHI KAPPA TAU

N. Shankweiler '30 is a member of the teaching staff at the Manlius Military Academy.

Charles Helwig '27 was admitted to the bar of Lehigh county this summer and won his first case pleaded before the Lehigh county courts.

Harry P. C. Cressman '13 directed Camp Miller this summer with the assistance of Leroy Snyder '31 as assistant director, Edward Barndt '32 camp chauffeur, and J. W. Savacool '33 as counsellor. Ralph Myers '27 acted as Director of Aquatics at the camp.

Benjamin Wissler assumed his new duties in the Department of Physics at Middlebury College, Middlebury, Vt., this fall.

John Shankweiler has been granted his sabbatical leave of one year to continue his studies at Cornell University to obtain his required work for the Ph. D. completed.

Mu Alumni News

By PAUL CARY, JR.

GEORGE Krause, after working for more than a year at Standard Oil Company headquarters at Whiting, Ind., has been transferred to the division branch at Mankato, Minn. Cliff Cooper '26 is now with that company at Whiting.

Fran Nicholas is employed in the purchasing department of the Fairbanks-Morse Company at Chicago. He is married and has a little daughter six months old. He and his family are living in Oak Park.

Milo Swanton, '26, is finishing his internship at St. Elizabeth hospital, Appleton. Next year he will be a full-fledged M. D., but has not yet made up his mind regarding his "base of operations."

Herbert Ungrodt, '30, is working for the Employers Mutual Liability Company at the home office in Wausau. "Hazy" Huelster is employed by the

same concern at the Milwaukee branch office.

John Faulkes, '23, is working for the Patek Paint Company, Milwaukee.

Lieutenant Charles Hutchison, '25, is leaving for the Canal Zone where he is to be stationed for two years. He graduated from West Point in 1927 after being at Lawrence for two years.

Alpha Iota Graduate News

THE graduates of last year have all secured work or are furthering their education in graduate schools. Howard McCormick is attending Columbia Law School. Jack Knecht is working for his master's degree in English at the University of Pennsylvania. Henry Mark's services are required by the R. C. A. Victor Corporation.

Roy Hottenstein, who is now married, is employed as manager of a silk mill. Alfred Warner is employed by a brokerage company in New York City. John Hansell is in the insurance business. Donald Henderer has a position with the Wilmington Wholesale Drug Company. George Keefe is with the Remington Rand Corporation. Harry Irwin is working for the E. L. Conwell Company of Philadelphia. The Standard Oil Company of New Jersey has secured the services of Charles Bohmer.

Alpha Mu Graduate News

By DON S. ALLEN

BOB Boyd '28, is now working in Youngstown, O., for the Atlantic and Pacific Tea Company in the accounting department of that concern.

Dave Hicks has recently accepted a position in Parkersburg, W. Va. as recreational commissioner of that city. Before he left Lakewood, his former home, the Phi Taus had a farewell surprise party for him. He was presented with a fountain pen desk set.

Ralph Rush was one of the camp ad-

visors at the National Band and Orchestra Camp at Interlochen, Mich. this summer. His tent of boys won the camp honors for efficiency.

During rushing season the following alumni were guests of the active chapter in Delaware:

Ken Pearce, Byron Walbolt, Allan Wilson, Ralph Winters, Howard Brown, and Deb Ruder.

Two members of the Graduate Council, Eugene Dawson '30, and Don Allen '28, are back in college this year working on their master's degree. Don has a position with the dramatic department as manager and technical director of the new campus theatre at Ohio Wesleyan.

Alpha Eta Alumni Notes

By C. C. CARNES

ALLEN Craig '27, has gone back to the University of Iowa to get his degree.

Robert H. Cranford '28, is practising law in Moultrie, Georgia.

Samuel Huffman '27, has a position as instructor in the mathematics department of the University of Florida.

M. C. Gardner '27, was appointed court reporter at Camilla, Georgia, last year, but has been ill for several months and is unable to take over the work.

Wilbur D. Jobe '27, is practising law in Jacksonville.

Lloyd M. Chew '26, former Alpha Eta president, was married this last winter, and he and his wife are both teaching in the Andrew Jackson High School in Jacksonville.

H. C. Farnsworth '30, a graduate from law college, has just hung out his shingle in Tampa.

B. N. Work '26, and A. C. Dean '29, are both in Oklahoma City, and have gone into the drug business.

Warren W. Connor '30, has also gone to Oklahoma City, where he is connected with a law firm.

C. C. Carnes has given up his teaching career and is now putting in full time for the Central Scientific Company of Chicago.

Tau Graduate Council News

By HAROLD BALDWIN

THE fourth annual Alumni Homecoming of Tau graduate members will be held at the chapter house on Nov. 14, 15 and 16.

A. R. Hellwarth has returned to his alma mater in a new role, now being employed as instructor in the engineering department.

D. M. Cooper is now employed as coach and physical education man at Cass High in Detroit.

S. J. Lukens is now employed on the faculty of University of Pennsylvania.

R. E. George has removed himself from the climate of Michigan and has opened up a law office in Los Angeles, Calif.

H. E. Baldwin was recently promoted to the rank of supervisor in the Duco plant of the Flint division of E. I. DuPont de Nemours Company.

Phi Taus Are Forming Alumni Group In Milwaukee

PHI TAUS in Milwaukee are organizing an alumni association and are holding meetings the first Thursday of each month at the Elk's Club at 6:30 p. m. Members of the fraternity living in Milwaukee wishing further details should call or write Edward Kramer at the Milwaukee Extension Center of the University of Wisconsin Extension Division, where he is an instructor.

Phi Kappa Psi reports the death of an honored alumnus, Judge David Gardner Tyler, son of John Tyler, tenth President of the United States.

DIRECTORY

of

The Phi Kappa Tau Fraternity

CENTRAL OFFICE

121 EAST HIGH STREET, OXFORD, OHIO

- GRAND PRESIDENT*-----W. MASSEY FOLEY
466 Baldwin Road, Maplewood, N. J.
- GRAND COUNCILOR*-----LEONARD M. UTZ
Waverly, Pa.
- GRAND COUNCILOR*-----ROLAND W. MAXWELL
616 Security Bldg., Pasadena, Calif.
- GRAND COUNCILOR*-----DR. HARRY A. TAYLOR
4728 St. Paul St., Lincoln, Neb.
- GRAND COUNCILOR*-----HARLEY W. CHANDLER
1236 Margaret St., Gainesville, Fla.
- GRAND COUNCILOR*-----PAUL T. GANTT
222 Carver Hall, Oxford and Harrison Ave.,
Philadelphia, Pa.
- GRAND SECRETARY-TREASURER*-----RICHARD J. YOUNG
121 East High St., Oxford, Ohio
- GRAND EDITOR*-----JACK W. JAREO
1039 Currie St., Marinette, Wis.
- GRAND COMPTROLLER*-----DR. W. H. SHIDELER
Oxford, Ohio

DOMAIN CHIEFS

DOMAIN

1. M. J. BOYER-----2116 Highland Ave., Allentown, Pa.
CHAPTERS: Eta, Rho, Sigma, Alpha Beta, Alpha Tau
2. P. T. GANTT-----Oxford and Harrison Ave., Philadelphia, Pa.
CHAPTERS: Xi, Omicron, Alpha Gamma, Alpha Iota, Alpha Omicron
3. REV. H. E. CROMER-----253 N. Main St., Suffolk, Va.
CHAPTERS: Chi, Alpha Theta
4. H. W. CHANDLER-----1236 Margaret St., Gainesville, Fla.
CHAPTERS: Alpha Eta, Alpha Lambda, Alpha Rho
5. E. J. CRUTCHER-----Transylvania University, Lexington, Ky.
CHAPTERS: Delta, Theta, Kappa
6. L. A. KEGERREIS-----935 Huntington Bank Bldg., Columbus, Ohio
CHAPTERS: Beta, Gamma, Phi, Alpha Xi
7. E. N. LITTLETON-----222 Wooster St., Bowling Green, Ohio
CHAPTERS: Alpha, Epsilon, Alpha Mu
8. L. F. HYDE-----228 Nona Ave., Dearborn, Mich.
CHAPTERS: Tau, Alpha Alpha, Alpha Delta
9. V. M. HENRY-----208 S. LaSalle St., Suite 730, Chicago, Ill.
CHAPTERS: Zeta, Lambda, Mu, Omega
10. A. C. EICHBERG-----2829 N. 59th St., Lincoln, Nebr.
CHAPTERS: Iota, Upsilon, Alpha Epsilon, Alpha Nu
11. R. A. BUSHEY-----c-o University Cafeteria, Boulder, Colo.
CHAPTERS: Psi, Alpha Sigma
12. D. A. PEARCE-----1010 Walker Ave., Oakland, Calif.
CHAPTERS: Nu, Pi
13. J. T. BREGGER-----c-o Extension Ser., Washington State College
Pullman, Wash.
CHAPTERS: Alpha Zeta, Alpha Kappa, Alpha Pi

CHAPTER DIRECTORY

FOUNDERS—

T. A. Borradaile, 310 Pennsylvania Ave., Charleston, W. Va.

Clinton D. Boyd, Middletown, Ohio.

Dwight I. Douglas.

W. H. Shideler, Oxford, Ohio.

ALPHA—Miami University
116 W. Church St., Oxford, Ohio.
Resident Council: *President*, William T. Amos.

Chapter Advisor: Dr. W. H. Shideler, Oxford, Ohio.

Graduate Council: *President*, Walter J. Miller, 303 Ridge Ave., Troy, Ohio; *Secretary*, Hugh C. Nichols, Batavia, Ohio.

BETA—Ohio University
50 E. State St., Athens, Ohio.
Resident Council: *President*, James Berry.

Chapter Advisor: John Rose, Athens, Ohio.

Graduate Council: *President*, Hollie C. Ellis, 534 Acklin Ave., Toledo, Ohio; *Secretary*, Howard Brokate, 217 Washington St., Port Clinton, Ohio.

GAMMA—Ohio State University
220 E. 14th Ave., Columbus, Ohio.
Resident Council: *President*, James E. Banta.

Chapter Advisor: Dr. H. E. Hoagland, Ohio State University, Columbus, Ohio.

Graduate Council: *President*, C. E. Cronin, 2256 Neil Ave., Columbus, Ohio; *Secretary*, R. V. McKinney, 1682 Wyandotte Rd., Columbus, Ohio.

DELTA—Centre College
Danville, Ky.
Resident Council: *President*, John S. Meier.

Chapter Advisor: Richard I. Rush, Danville, Ky.

Graduate Council: *President*, John Y. Brown, 512 Security Trust Bldg., Lexington, Ky.; *Secretary*, Tom Fullenlove, 4618 S. Sixth St., Louisville, Ky.

EPSILON—Mount Union College
136 Hartshorn St., Alliance, Ohio.
Resident Council: *President*, Harry C. Winkler.

Chapter Advisor: A. M. Dimit, City Savings Bank Bldg., Alliance, Ohio.

Graduate Council: *President*, M. E. Newcomer, 1317 E. 142nd St., E. Cleveland, Ohio; *Secretary*, Milan Mattes, Box 165, Newton Falls, Ohio.

ZETA—University of Illinois
310 N. Stadium Dr., Champaign, Ill.
Resident Council: *President*, William E. Willey.

Chapter Advisor: George B. Elliott, 1003 E. Third St., Champaign, Ill.

Graduate Council: *President*, V. M. Henry, 8030 Eberhart Ave., Chicago, Illinois; *Secretary*, G. K. Hardacre, 79 W. Monroe St., Room 819, Chicago, Illinois.

ETA—Muhlenberg College
2224 Liberty St., Allentown, Pa.
Resident Council: *President*, Harold A. Bowman.

Chapter Advisor: Harry P. Cressman, Muhlenberg College, Allentown, Pa.

Graduate Council: *President*, Paul H. Hildebrand, 518 N. 20th St., Allentown, Pa.; *Secretary*, Carl W. Boyer, 2127 Liberty St., Allentown, Pa.

THETA—Transylvania University
Lexington, Ky.
Resident Council: *President*, Cooksey C. Crafton.

Chapter Advisor: Ernest J. Crutcher, Transylvania University, Lexington, Ky.

Graduate Council: *President*, J. G. Bruce, 604 Kentucky Ave., Pineville, Ky.; *Secretary*, E. J. Crutcher, Transylvania University, Lexington, Ky.

THE LAUREL OF PHI KAPPA TAU

- IOTA—Coe College.
830 Fifth Ave., Cedar Rapids, Iowa.
Resident Council: *President*, Seymour S. Sidner, Jr.
Chapter Advisor: Hamilton Morse, 203 Higley Bldg., Cedar Rapids, Iowa.
Graduate Council: *President*, John W. Miller, 1419 Washington Ave., Cedar Rapids, Iowa; *Secretary*, H. H. Morse, 203 Higley Bldg., Cedar Rapids, Iowa.
- KAPPA—University of Kentucky
365 Aylesford Place.
Resident Council: *President*, M. L. Barnes.
Chapter Advisor: Roy Moreland, College of Law, University of Kentucky, Lexington, Ky.
Graduate Council: *President*, A. J. Bradshaw, 558 Builders Bldg., Chicago, Illinois; *Secretary*, Marshall Barnes, Beaver Dam, Ky.
- LAMBDA—Purdue University
516 Northwestern Ave., Lafayette, Ind.
Resident Council: *President*, J. E. Brumbaugh.
Chapter Advisor: V. C. Manhart, and Captain F. W. Bryant, Lafayette, Ind.
Graduate Council: *President*, Richard C. Lennox, 537 Architects and Builders Bldg., Indianapolis, Ind.; *Secretary*, Joseph C. Matthews, 4921 N. Capitol Ave., Indianapolis, Ind.
- MU—Lawrence College
122 N. Union St., Appleton, Wisconsin.
Resident Council: *President*, Charles Culmer.
Chapter Advisor: Dr. Arthur Weston, 738 E. John St., Appleton, Wis.
Graduate Council: *President*, Joseph Mallery, 1504 N. Superior St., Appleton, Wis.; *Secretary*, Paul Cary, 219 Rankin St., Appleton, Wis.
- NU—University of California
2335 Piedmont Ave., Berkeley, Calif.
Resident Council: *President*, Harvey T. Granger.
Chapter Advisor: A. E. Maffly, 1040 Sierra St., Berkeley, Calif.
Graduate Council: *President*, James A. Smith, 1542—11th Ave., San Francisco, Calif.; *Secretary*, Kenneth Courtright, 814 Central Bank Bldg., Oakland, Calif.
- XI—Franklin and Marshall College
365 College Ave., Lancaster, Pa.
Resident Council: *President* M. Luther Leymeister.
Chapter Advisor: W. E. Weisgerber, 830 Buchanan Ave., Lancaster, Pa.
Graduate Council: *President*, P. M. Limbert, 628 Race Ave., Lancaster, Pa.; *Secretary*, Rev. Charles D. Spotts, 632 W. Walnut St., Lancaster, Pa.
- OMICRON—Pennsylvania State College
234 Frazier St., State College, Pa.
Resident Council: *President*, Walter M. Brown.
Chapter Advisor: Sheldon C. Tanner, and Dr. D. L. Markle, Pennsylvania State College, State College, Pa.
Graduate Council: *President*, Ross E. Osborn, 358 Fairfax Ave., Drexel Hill, Pa.; *Secretary*, Robert T. Gallagher, Phi Kappa Tau House, State College, Pa.
- PI—University of Southern California
904 W. 28th St., Los Angeles, Calif.
Resident Council: *President*, Emil W. Foust.
Chapter Advisor: Dr. Arthur Freston, 424 W. Orange St., Los Angeles, Calif.
Graduate Council: *President*, Raymond Brennan, 616 Security Bldg., Pasadena, Calif.; *Secretary*, Burdette Ives, 5201 Santa Fe Ave., Los Angeles, Calif.
- RHO—Rensselaer Polytechnic Institute
11th St. and People Ave., Troy, N. Y.
Resident Council: *President*, F. D. Dunton.
Graduate Council: *President*, Fred C. Stevens, 50 Piso, Apartado 805, Havana, Cuba; *Secretary*, P. M. Harrington, Jr., 48 Washington St., Nyack, N. Y.
- SIGMA—Syracuse University
222 Euclid Ave., Syracuse, N. Y.
Resident Council: *President*, George Mollenhauer.
Chapter Advisor: N. A. Rotunno, 623 Clarendon St., Syracuse, N. Y.
Graduate Council: *President*, N. A. Rotunno, 623 Clarendon St., Syracuse, N. Y.; *Secretary*, Arthur Eldridge, 151 Fernwood Ave., Syracuse, N. Y.

THE LAUREL OF PHI KAPPA TAU

TAU—University of Michigan
 1022 Forest Ave., Ann Arbor, Mich.
 Resident Council: *President*, Robert W. Scoville.
 Chapter Advisor: Frank A. Mickle, 1053 Olivia St., Ann Arbor, Mich.
 Graduate Council: *President*, Larry Golden, 17140 Third St., Detroit, Mich.; *Secretary*, Harold L. Baldwin, 334 Page St., Flint, Mich.

UPSILON—Nebraska Wesleyan University
 5305 Huntington Ave., Lincoln, Neb.
 Resident Council: *President*, Philip Ried.
 Chapter Advisor: Dr. H. A. Taylor, 4728 St. Paul Ave., Lincoln, Neb.
 Graduate Council: *President*, Milton H. Metcalf, 2934 N. 52nd St., Lincoln, Neb.; *Secretary*, Howard A. Durham, 5110 Madison Ave., Lincoln, Neb.

PHI—Bethany College
 Bethany, W. Va.
 Resident Council: *President*, Malcolm Rush.
 Chapter Advisor: Ira Franck, Bethany, W. Va.
 Graduate Council: *President*, George V. Dawson, 615 Wheeling Bank & Trust Bldg., Wheeling, W. Va.

CHI—North Carolina State College
 116 Groveland Ave., Raleigh, N. C.
 Resident Council: *President*, Frank L. Fentress.
 Chapter Advisor: Dean E. L. Cloyd, North Carolina State College, Raleigh, N. C.
 Graduate Council: *President*, Dean E. L. Cloyd, Raleigh, N. C.; *Secretary*, Andrew Monroe, Carolina Power and Light Co., Raleigh, N. C.

PSI—University of Colorado
 1150 College Ave., Boulder, Colo.
 Resident Council: *President*, Richard Hogan.
 Chapter Advisor: Ray A. Bushey, University Cafeteria, Boulder, Colo.
 Graduate Council: *President*, George Burnett, 822 Marion St., Denver, Colo.; *Secretary*, Lewis M. Culver, 317 W. 17th Ave., Pueblo, Colo.

OMEGA—University of Wisconsin
 615 N. Henry St., Madison, Wis.
 Resident Council: *President*, Richard W. Orton.
 Chapter Advisor: Dr. Bernhard Domogolla, State Laboratory of Hygiene, Madison, Wis.
 Graduate Council: *President*, Dr. Bernhard Domogolla, Madison, Wis.; *Secretary*, Enoch E. Judkins, 202 N. Pinckney St., Madison, Wis.

ALPHA ALPHA—Michigan State College
 223 Delta St., East Lansing, Mich.
 Resident Council: *President*, D. C. Carruthers.
 Chapter Advisor: Dr. M. M. McCool, 635 Hillcrest, East Lansing, Mich.
 Graduate Council: *President*, Harold W. Kerr, 9344 Genessee St., Detroit, Mich.; *Secretary*, J. T. Bregger, Extension Service, Washington State College, Pullman, Wash.

ALPHA BETA—New York University
 2269 University Ave., Bronx, New York, N. Y.
 Resident Council: *President*, Frank E. Wickham.
 Chapter Advisor: Charles L. Martens, 231 Lafayette Ave., Grantwood, N. J.
 Graduate Council: *President*, George R. Meadows, Closter, N. J.; *Secretary*, Clarence Savage, 3115 Sedgwick Ave., New York, N. Y.

ALPHA GAMMA—University of Delaware
 29 Park Place, Newark, Del.
 Resident Council: *President*, Samuel Krewatch.
 Chapter Advisor: Dr. G. H. Ryden, Dept. of History, University of Delaware, Newark, Del.
 Graduate Council: *President*, Harold W. Clift, 2419 Market St., Wilmington, Del.; *Secretary*, Raymond K. Grubb, 12 Adelpia Ave., Silview, Newport, Del.

ALPHA DELTA—Case School of Applied Science
 2102 E. 100th St., Cleveland, Ohio.
 Resident Council: *President*, Lewis B. Delamater.
 Chapter Advisor: C. C. Goddard, 925 Guarantee Title Bldg., Cleveland, Ohio.

THE LAUREL OF PHI KAPPA TAU

- Graduate Council: *President*, James M. Hicks, 7103 Lawnview Ave., Cleveland, Ohio; *Secretary*, John F. Schneider, 3903 Spokane Ave., Cleveland, Ohio.
- ALPHA EPSILON—Kansas State Agricultural College
1447 Anderson Ave., Manhattan, Kans.
Resident Council: *President*, Olney Mohney.
Graduate Council: *President*, Randall C. Hill, 1611 Laramie St., Manhattan, Kans.; *Secretary*, George Montgomery, Kansas State Agricultural College, Manhattan, Kans.
- ALPHA ZETA—Oregon State Agricultural College
15th and Van Buren Sts., Corvallis, Ore.
Resident Council: *President*, Robert G. Mispley.
Chapter Advisor: Robert H. Dann, 904 Madison St., Corvallis, Ore.
Graduate Council: *President*, George E. Payne, R. R. 4, Corvallis, Ore.; *Secretary*, Bruce F. Pickett, 727 Schyler St., Portland, Ore.
- ALPHA ETA—University of Florida
1353 W. Union St., Gainesville, Fla.
Resident Council: *President*, Lewis F. Blalock.
Chapter Advisor: Harley W. Chandler, 1236 Margaret St., Gainesville, Fla.
Graduate Council: *President*, Harold Farnsworth, 3842 Nebraska Ave., Tampa, Fla.; *Secretary*, Carl C. Carnes, c-o M. Luck, Raiford, Fla.
- ALPHA THETA—College of William and Mary, 229 Richmond Road, Williamsburg, Va.
Resident Council: *President*, Frank H. Beard.
Chapter Advisor: Joseph T. Ecker, Dept. of History, College of William and Mary, Williamsburg, Va.
Graduate Council: *President*, M. Carl Andrews, Roanoke, Va.; *Secretary*, E. P. Simpkins, Jr., 333 Richmond Road, Williamsburg, Va.
- ALPHA IOTA—University of Pennsylvania.
3902 Locust St., Philadelphia, Pa.
Resident Council: *President*, Armand J. Andre.
- Chapter Advisor: Darragh MacKenzie, 906 S. 46th St., Philadelphia, Pa.
Graduate Council: *President*, Clarence Doud, 4700 Sansom St., Philadelphia, Pa.; *Secretary*, Richard Bishop, 6326 Boynton St., Philadelphia, Pa.
- ALPHA KAPPA — Washington State College
1711 Maple Ave., Pullman, Wash.
Resident Council: *President*, Norman Hovland.
Chapter Advisor: Dr. C. C. Todd, 1906 Indiana Ave., Pullman, Wash.
Graduate Council: *President*, Lester Greenwood, 708 Park Place, Spokane, Wash.; *Secretary*, John Harrington, 6139 Kenwood Ave., Chicago, Ill.
- ALPHA LAMBDA — Alabama Polytechnic Institute
Auburn, Ala.
Resident Council: *President*, R. L. Hume.
Chapter Advisor: Dr. J. M. Robinson, Alabama Polytechnic Institute, Auburn, Ala.
Graduate Council: *Secretary*, George H. Hill, 1216 S. 16th St., Birmingham, Ala.
- ALPHA MU—Ohio Wesleyan University
58 W. Lincoln St., Delaware, Ohio.
Resident Council: *President*, William Clapp.
Graduate Council: *President*, W. Robert Boyd, 1474 S. Front St., Cuyahoga Falls, Ohio; *Secretary*, Donald S. Allen, 58 W. Lincoln St., Delaware, Ohio.
- ALPHA NU—Iowa State University
Box O, Station A, Ames, Iowa.
Resident Council: *President*, Vernon W. Boyer.
Chapter Advisor: Dr. F. E. Brown, Iowa State University, Ames, Iowa.
Graduate Council: *President*, Merlyn O. Waterman, c-o N. W. Bell Telephone Co., Cedar Rapids, Iowa; *Secretary*, Karl W. Johnson, Archer, Iowa.
- ALPHA XI—West Virginia University
750 Willey St., Morgantown, W. Va.
Resident Council: *President*, William S. Miller.

THE LAUREL OF PHI KAPPA TAU

- Graduate Council: *President*, W. S. Bosely, Jr., 61 Mapes Ave., Newark, N. J.; *Secretary*, Capt. J. Frank Heflin, Greenbrier Military School, Lewisburg, Va.
- ALPHA OMICRON—Lafayette College Easton, Pa.
Resident Council: *President*, A. L. Buckwalter.
Chapter Advisor: Dr. Freeman Ward, Lafayette College, Easton, Pa.
Graduate Council: *President*, Clayton R. Horton, Bangor, Pa.; *Secretary*, J. Frederick Scull, Nesquehoning, Pa.
- ALPHA PI—University of Washington 4547 Seventeenth St., N. E., Seattle, Wash.
Resident Council: *President*, Byron Congdon.
Chapter Advisor: Frank C. Van de Walker, University of Washington, Seattle, Wash.
Graduate Council: *President*, Donald H. Davis, 1409 Boren Ave., Seattle, Wash.; *Secretary*, Lyle Daverin, Toppenish, Wash.
- ALPHA RHO—Georgia School of Technology 116 North Ave., N. W., Atlanta, Ga.
Resident Council: *President*, F. H. Reynolds.
Chapter Advisor: Dr. G. H. Boggs, Georgia School of Technology, Atlanta, Ga.
Graduate Council: *President*, N. R. Stowe, 1604 S. Peachtree St., N. W., Atlanta, Ga.; *Secretary*, D. C. Moore, 70 Pryor St., N. E., Atlanta, Ga.
- ALPHA SIGMA—Colorado State Agricultural College.
425 S. College Ave., Ft. Collins, Colo.
Resident Council: *President*, Leslie Madison.
Chapter Advisor: D. F. Richardson, State Board of Vocational Education, Ft. Collins, Colo.
Graduate Council: *President*, Harold M. McClintock, City Hall, Boulder, Colo.; *Secretary*, Charles A. Smith, 416 Elizabeth St., Ft. Collins, Colo.

ALUMNI ASSOCIATIONS

- AKRON, OHIO—*President*, C. R. Terry, 444 Broad Blvd., Cuyahoga Falls, Ohio; *Secretary*, John W. Miller, University Club, Akron, Ohio. Meets monthly.
- ANN ARBOR, MICH.—Frank Mickle, 1053 Olivia St.
- BOSTON, MASS.—*President*, Clair H. Johnson, Boston, Y. M. C. A., 316 Huntington St., Boston, Mass.; *Secretary*, H. B. Williams, 2 Louisburg Square, Boston, Mass.
- CANTON, OHIO — *President*, I. W. Delp; *Secretary-Treasurer*, C. L. Riley, 1226 14th St. N. W.,
- CEDAR RAPIDS, IOWA — *President*, John Miller; *Secretary*, Karl G. Roths; Chairman of Committees, Hamilton Morse.
- CHICAGO, ILL.—*President*, Victor M. Henry, 8030 Eberhardt Ave.; *Secretary*, L. W. Nolte, 160 N. LaSalle, Room 718. Monthly luncheon first Tuesday in each month except J., A. and S., Interfraternity Club, LaSalle Hotel, 12:30. All visiting brothers invited to drop in.
- CLEVELAND, OHIO—*President*, Eugene Beekley, 2016 Richland Ave., Lakewood, Ohio; *Secretary*, F. Scott Zimmerman, Engineers Bank Bldg. Meets first Tuesday of month. Telephone Sec'y, Cherry 4818.
- COLUMBUS, OHIO —*President*, Glenn M. Smith, 301 High-Long Bldg.; *Secretary*, Charles E. Bonner, 362 Alden Ave.; *Treasurer*, Arthur T. Amerine, 75 Schreyer Place.
- DAYTON, OHIO — *Secretary*, V. Z. Dorfmeier, 814 Dayton Savings and Trust Bldg.
- DENVER, COLO.—*Secretary*, James R. Hoffman. Meets first Friday evening of each month at 6:30 for dinner at the Blue Parrot.

THE LAUREL OF PHI KAPPA TAU

DETROIT, MICH.—*President*, E. L. Golden, 17140 Third St., *Secretary*, H. W. Kerr, 9344 Genessee Ave.

INDIANAPOLIS, IND.—*President*, R. C. Lennox, 537 Architects & Builders Bldg.; *Secretary*, F. C. Ruskaup, 711 Dorman St. Meets second Saturday evening of each month.

KANSAS CITY, MO.—*President*, E. A. Sandler, 909 Baltimore Ave.; *Secretary*, R. W. Wilson, 6236 McGee St. Meets every Tuesday for luncheon at Kansas City Athletic Club.

LEHIGH VALLEY, PA.—*President*, Louis Edwards, 215 N. 18th St., Allentown, Pa.; *Secretary*, Paul H. Hildebrand, 518 N. 20th St., Allentown, Pa. Meets every third Friday of the month at Eta Chapter house. Visiting brothers are cordially invited to visit us.

LOS ANGELES, CALIF.—*President*, W. N. Anderson, 501 Security Bldg., Los Angeles. Meets for luncheon third Thursday of month at University Club at 12:15 p. m.

NEW YORK CITY—*President*, Milton A. Cruden, 150 Ross Ave., Hackensack, N. J.; *Secretary-Treasurer*, Rev. Leslie J. Barnette, 574 Madison St., Brooklyn, N. Y. Meets fourth Monday evening of month, Gold Room, Madison Square Hotel.

OAKLAND, CALIF.—*Secretary*, K. L. Courtright, 814 Central Bank Bldg. Meets at noon on first Tuesday after the tenth of each month.

PHILADELPHIA, PA.—*President*, P. T. Gantt, 222 Carver Hall, Oxford and Harrison Ave.; *Secretary-Treasurer*, Chas. A. Seaman, 4700 Sansom St.

PITTSBURGH, PA.—*President*, C. R. Fay, 1718 Montier St., Wilkensburg, Pa.; *Secretary*, O. P. Mann, 40 South Emily St., Crafton, Pa.

SALT LAKE CITY, UTAH—*President*, A. W. DuVall, Alpha, 503-4 Centennial National Bank Bldg.

SAN FRANCISCO, CALIF.—Meets on the third Thursday of each month at the Palace Hotel. Officers: Victor W. Galvin, *President*, 2439 22nd Ave., phone Sunset 4376.

SCRANTON, PA.—Northeastern Pennsylvania. Call A. C. Kehrl, 1405 N. Washington Ave.

SEATTLE, WASH.—*President*, C. E. Ahnstedt, 1127 Dexter Horton Bldg., Seattle, Wash.

WILMINGTON, DEL.—*Secretary*, Roger W. Cann, 2711 Creston Place. Meets first Thursday each month, 6:15 p. m., in the Elks Club.

PHI ETA CHAPTERS

ALPHA—Pi, University of Southern California

President, Mrs. M. L. Hazzard, 1480 Morada Place, Pasadena, Calif.

BETA—Epsilon, Mount Union College
President, Mrs. Clara Lafferty, 141 Simpson St., Alliance, Ohio.

GAMMA—Kappa, University of Kentucky

President, Mrs. Andrew Harmon, 157 Lincoln Ave., Lexington, Ky.

DELTA—Psi, Colorado University
President, Mrs. H. B. Ellis, 2744 West 33rd Ave., Denver, Colo.

EPSILON—Omicron, Pennsylvania State College

President, Mrs. Laura Hullbaugh, 200 Atherton St., State College, Pittsburgh, Pa.

ZETA—Phi, Bethany College
President, Mrs. W. H. Rush, Hanoverton, Ohio.

ETA—Alpha Theta, William and Mary College

President, Mrs. H. M. Scammon, 1130 23rd St., Newport News, Va.

THETA—Alpha Pi, University of Washington

IOTA—Alpha Mu, Ohio Wesleyan University

President, Mrs. C. J. Ehrich, 1185 Warren Rd., Lakewood, Ohio.

KAPPA—Zeta, University of Illinois
President, Mrs. Elda Pixton, Chicago, Ill.

LAMBDA—Alpha Sigma, Colorado Agricultural College

President, Mrs. Herbert Slingo, 1375 University Blvd., Denver, Colo.

MU—Eta, Muhlenberg College

President, Lucretia Bowman (Mrs. C. B.), 243 S. Madison St., Allentown, Pa.

NU—Alpha Delta, Case School of Applied Science

President, Mrs. H. A. Sanland, 2008 Martindale Rd., Cleveland Heights, Ohio.

XI—Alpha Epsilon, Kansas State Agricultural College

President, Mrs. C. E. Reid, 421 N. 16th St., Manhattan, Kans.

OMICRON—Epsilon, Nebraska Wesleyan University

President, Mrs. M. C. Jenkins, 5227 Walker Ave., Lincoln, Neb.

HEY, WAIT!

When you move,
don't forget
THE LAUREL ♦ ♦ ♦



Just fill out this slip and send it to the Central Office

The Phi Kappa Tau Fraternity
Central office at Oxford, Ohio

Name _____

Chapter _____ Class _____

New Address _____

Old Address _____

If you have failed to receive The Laurel regularly, check here

» » NEW CODED RITUAL Second Edition

Contains complete rites and ceremonies
All Phi Kappa Tau work in coded form

Available for distribution among
Chapters, Actives, Alumni ■ ■

\$1.00 PREPAID ORDER NOW

The Phi Kappa Tau Fraternity
Central Office at Oxford, Ohio

● BROCHON

MANUFACTURING JEWELERS
STATIONERY ENGRAVERS ●

Official to Phi Kappa Tau

FRATERNITY JEWELRY, NOVELTIES, and FAVORS,
DANCE PROGRAMS, INVITATIONS ● ● ●

235 EAST ONTARIO ST.
CHICAGO ●

SONG BOOKS

START THE YEAR OFF RIGHT
SING FOR PHI KAPPA TAU!



Songs of Phi Kappa Tau and other fraternities
Bound in heavy red and gold cover—

\$1.00 Prepaid Order from



THE PHI KAPPA TAU FRATERNITY
Central Office - Oxford, Ohio

EN ♦ ♦ ♦
AVANT
EVER FORWARD



THE BOOK FOR MODERN GREEKS

1 9 3 1

NEW ♦ MODERN ♦ NEW

SELECTION OF GIFTS AND PARTY FAVORS PRESENTED
IN THE SMART MODERNE MODE ON BLACK BACK-
GROUND IN BIZARRE EFFECTS.



FACTORIES

Detroit, Michigan
also in
Walkerville,
Ontario

BRANCH STORES

Ann Arbor,
Michigan
Berkeley,
California
Champaign,
Illinois
Columbus,
Ohio
Tuscaloosa,
Alabama

OLD DEPENDABLE POLICY

QUALITY AS REPRESENTED.
SERVICE SECOND TO NONE.
COURTESY THAT YOU HAVE REASON TO EXPECT
AND A DESIRE TO PLEASE.

ORDER YOUR COPY NOW

THE BOOK FOR MODERN GREEKS IS FREE TO THOSE
WHO ARE INTERESTED IN THE PURCHASE OF FRATER-
NITY JEWELRY. YOUR BADGE PRICE LIST WILL BE IN-
CLUDED IF YOU WILL MENTION YOUR FRATERNITY.



BURR, PATTERSON & AULD CO.
2301 SIXTEENTH STREET
DETROIT, MICHIGAN

EDWARDS, HALDEMAN & CO.

offers to the members who wear the

«» Phi Kappa Tau Badge «»

an unsurpassable selection of Jewelry

worthy of bearing the arms of

«» PHI KAPPA TAU «»

Badges are made of the finest quality pearls and gold, embodying the finest craftsmanship » » Gifts and favors, bearing the coat of arms, to meet all prices and conditions » » A comprehensive selection » » Authentic designs, uniform beauty » » for such things have found favor with the members of Phi Kappa Tau during the many years we have supplied their jewelry needs

EDWARDS, HALDEMAN & CO.

FRATERNITY JEWELERS

FARWELL, BUILDING

DETROIT, MICH.



*Write for your Badge Price
List and Book of Treasures
illustrating Fraternity Jew-
elry and Novelties . . .*

OFFICIAL JEWELERS TO PHI KAPPA TAU
