

THE LAUREL

OF PHI KAPPA TAU

SUMMER 1983

The Decision 
For **Phi Kappa Tau**

A \$3,000,000
CAMPAIGN FOR EXCELLENCE

THE LAUREL

FEATURE



3 THE DECISION FOR PHI KAPPA TAU

The Phi Kappa Tau Foundation and Fraternity announce a historical \$3,000,000 fund raising campaign to permanently endow core programs.

FEATURE



5 CAMPAIGN STEERING COMMITTEE

Fourteen alumni direct The Decision for Phi Kappa Tau.

DEPARTMENT

22 THE CHAPTERS REPORT

Another school year is over, and the chapters report on scholarship success, philanthropic projects and plans for the coming fall.



ALSO

- The Mission 6
- Questions & Answers 10
- Leadership Givers..... 12
- Ways of Giving 15
- Gift Circles 17
- Development Fund 18



The Phi Kappa Tau Fraternity

Founded at Miami University
Oxford, Ohio, March 17, 1906

National Officers

- NATIONAL PRESIDENT—John M. Green, President, Wauneta Falls Bank, 202 N. Tecumseh, Wauneta, NE 69045.
- NATIONAL VICE PRESIDENT—Raymond A. Bichimer, 42 East Gay St., Columbus, OH 43215.
- HOUSING AND FINANCIAL ADVISOR—Tom Hendricks, 9120 Coral Cove Dr., Dallas, TX 75243.
- NATIONAL CHAPLAIN—Dr. Rodney E. Wilmoth, 2320 N. 55th St., Omaha, NE 68104.
- EDUCATIONAL DIRECTOR—Dr. Monroe Moosnick, 2010 Bixby Way, Lexington, KY 40502.

The National Council

- The National President, Vice President, Housing and Financial Adviser, and:
- Ross E. Roeder, 925 31st Terrace N.E., St. Petersburg, FL 33704.
- John A. Johnson, 1255 E. County Line Rd., 1-6, Jackson, MS 39211.
- John F. Cosgrove, 19 West Flagler St., Suite 910, Miami, FL 33130.
- Harold H. Short, 1001 8th Street, Boulder, CO 80302.
- Tom C. Cunningham, Vought Aerospace Corp., Unit 1-97000, Box 225907, Dallas, TX 75265.
- Robert G. Aldridge, 5420 79th Place N.E., Marysville, WA 98270.
- Walter Strange, May Co. Service Bldg., 3447 S. Grand Ave., Los Angeles, CA 90007.
- Brian Ferguson, 214 Napoleon Rd., Apt. 1, Bowling Green, OH 43402.
- Steve Krohn, Phi Kappa Tau, Southern Station, Box 8525, Hattiesburg, MS 39401.
- Keith Vasey, 1623 Wedbee, Fort Collins, CO 80E25.
- *Dan L. Huffer, 155 E. Broad St., Columbus, OH 43265.
- *Ex-officio, non-voting.

Founders

- Taylor A. Borradaile, Clinton D. Boyd, Dwight I. Douglas, William H. Shideier.

Domain Directors

- Allegheny—Jeff Rivard, 3 Glenside, Annandale, NJ 08801. Chapters: Eta, Xi, Omicron, Alpha Gamma.
- Atlantic Seaboard—Dave Rabb, 13721 Berryville Rd., Germantown, MD 20874. Chapters: Chi, Beta Omicron, Gamma Eta.
- Bluegrass—Joe Joiner, 405 Summit St., Richmond, KY 40475. Chapters: Delta, Theta, Kappa, Beta Beta, Delta Theta, Delta Pi, Delta Rho, UT-Martin Colony.
- Buckeye-Central—Jay Salvage, 1324 Shady Ln., Findlay, OH 45840. Chapters: Beta, Gamma, Beta Tau.
- Buckeye-North—Gary L. Pritt, 11915 Lockland Circle, Canal Fulton, OH 44614. Chapters: Epsilon, Alpha Phi, Delta Lambda.

- Buckeye-South—Buzz Green, 903 Marilyn Dr., Oxford, OH 45056. Chapters: Alpha, Gamma Beta, Delta Nu.
- Deep South—Steve Nelson, 123 Woodhaven Dr., Gulfport, MS 39501. Chapters: Alpha Chi, Beta Epsilon, Gamma Upsilon, Delta Gamma.
- Empire—Chris Wood, 589 McIntyre, Caledonia, NY 14423. Chapters: Rho, Alpha Tau, Beta Upsilon, Gamma Nu, Gamma Gamma Colony, Gamma Zeta Colony.
- Erie—Tom Aldrich, 1060 Greyton Rd., Cleveland Heights, OH 44112. Chapters: Alpha Delta, Alpha Omega, Delta Xi.
- Golden Bear-North—Stephen Brothers, 45 Clark Dr., San Mateo, CA 94402. Chapters: Nu, Beta Omega, Gamma Iota Colony.
- Golden Bear-South—Walter Strange, May Co. Service Bldg., 3447 S. Grand Ave., Los Angeles, CA 90007.
- ASSISTANT: Eldon Baber, 205-7 15th St., Huntington Beach, CA 92648. Chapters: Pi, Beta Rho Colony, Beta Psi, Gamma Omicron, Cal Poly Colony.
- Great Lakes—James Lahmann, 9392 Maple, New Lothrop, MI 48860. Chapters: Gamma Alpha, Gamma Delta, Gamma Lambda, Tau Colony.
- Hawkeye—Vacant. Chapters: Iota, Alpha Nu, Delta Alpha.
- Hoosier—Jeff Korb, 1653 Lincoln Ave., Evansville, IN 47714. Chapters: Lambda, Beta Lambda, Delta Beta.
- Lincoln—Blair Hall, 1320 Hanson, Normal, IL 61761. Chapters: Zeta, Mu, Gamma Mu.
- Lone Star—Gregory Hollen, 2808 Quail Lane, Arlington, Texas 76016. Chapters: Beta Alpha, Gamma Psi, Delta Omicron.
- O.K.—F. Alan Nordean, 100 Center Plaza, #1905, Tulsa, OK 74119. Chapters: Beta Kappa, Gamma Xi.
- Pacific Northwest—Doug Scoville, Route 1, Box 185, Potlatch, ID 83855. Chapters: Alpha Kappa, Alpha Pi, Beta Gamma.
- Prairie—L. James Kubert, 6900 Saylor Circle, Lincoln, NE 68506. Chapters: Upsilon, Alpha Epsilon, Gamma Rho.
- Rocky Mountain—Jerry Helton, 229 Cypress Circle, Broomfield, CO 80020. Chapters: Psi, Alpha Sigma.
- Southeast—Dr. Lawrence M. Schmidt, 218 Ashley Circle, Martinez, GA 30907. Chapters: Alpha Lambda, Alpha Rho, Beta Xi, Delta Kappa, Georgia State Colony.
- Southwest—Bill Soules, 5045 Las Alturas Dr., Las Cruces, NM 88007. Chapters: Alpha Psi, Beta Zeta, Delta Mu.
- Sunshine—Pat McGrath, 19 W. Flagler St., Miami, FL 33130. Chapters: Alpha Eta, Beta Iota, Delta Sigma, Biscayne Colony, F.I.T. Colony.
- Tri-State—John Dercoli, 3532 Arden Blvd., Youngstown, OH 44511. Chapters: Phi, Beta Phi, Gamma Pi.

National Headquarters

- EXECUTIVE DIRECTOR—John Meyerhoff
- DIRECTOR OF FIELD OPERATIONS—Ben F. Nelson
- DIRECTOR OF PUBLICATIONS—Tim W. Collins
- CAMPAIGN DIRECTOR—Jack L. Anson
- ASSISTANT DIRECTOR OF DEVELOPMENT—J. Luke Strockis

- CHAPTER LEADERSHIP CONSULTANTS—Richard P. Harrison, Jr., K. Steven Lilly, Douglas C. Adams
- EXECUTIVE ASSISTANT—Mrs. Ellen L. Wisecup
- FINANCIAL ASSISTANT—Ms. Tempie Meyerhoff
- RECEPTIONIST—Mrs. Peg Cranmer
- MEMBERSHIP RECORDS—Mrs. Mary D. Smith
- DEVELOPMENT SECRETARY—Julie H. Nelson
- TYPIST—Bev DeVriendt

The Phi Kappa Tau Foundation

- CHAIRMAN OF THE BOARD—Ewing T. Boles, 724 Atlas Bldg., 8 E. Long St., Columbus, OH 43215.
- PRESIDENT—Dan L. Huffer, 155 E. Broad St., Columbus, OH 43265.
- VICE PRESIDENT—Larry Fisher, 495 Tucker Dr., Worthington, OH 43085.
- SECRETARY/TREASURER—Frederic E. Mills, 4180 Greenvine, Columbus, OH 43209.
- TRUSTEES—J. Oliver Amos, Jack L. Anson, John L. Bartholomew, Raymond A. Bichimer, Charles E. Bonner, Ray A. Clarke, John F. Cosgrove, Thomas C. Cunningham, Melvin Dettra, Jr., John A. Edwards, Sr., Paul A. Eifers, Ernest E. Emswiler, David G. Hawthorn, John M. Green, Jim K. Heilmeyer, William F. Kerby, William N. Liggett, Edward A. Marye, Jr., F. L. McKinley, Frank R. Musrush, Edward M. Paulin, Harold H. Short, Thomas L. Stennis II, Dr. Ernest H. Volwier, Harold N. Wilson.

THE LAUREL of Phi Kappa Tau

An Educational Journal

Volume 71, No. 4, Summer 1983
Published quarterly (Fall, Winter, Spring, Summer) by the Phi Kappa Tau Fraternity at 15 N. Campus Avenue, Oxford, Ohio 45056. Third class non-profit postage paid at Huntington, Indiana.
Editorial and Business Offices
15 North Campus Avenue, Oxford, Ohio 45056
Telephone (513) 523-4193

Editor Tim W. Collins



Member: The College Fraternity Editors Association
Postmaster: Please send notice of undeliverable copies on Form 3579 to:
THE LAUREL of Phi Kappa Tau
15 North Campus Avenue
Oxford, Ohio 45056

THE LAUREL is the exoteric publication of the Phi Kappa Tau Fraternity. Published prior to 1919 as SIDELIGHTS. A quarterly magazine devoted to educational materials concerning college and fraternity interests published under direction and authority of the National Council of The Phi Kappa Tau Fraternity.

The Decision

For **Phi Kappa Tau**



Capital Funds Drive Is Announced

\$3,000,000 Goal Set

“Gentleman, a small group of alumni and I hereby pledge to give \$1,000,000 as a challenge gift to the Phi Kappa Tau Foundation.”

Those were the dramatic words of Ewing T. Boles *Centre '16*, at a luncheon last December. From that statement, and the discussion that followed, came the first leadership gifts to *The Decision for Phi Kappa Tau*—a Decision to undertake a capital funds drive with a goal of \$3,000,000 to be raised by June, 1984. As of July 28, a total of \$1,857,175 has been pledged or given by supporting alumni and friends of the Fraternity.

Attending that luncheon last December in Columbus, Ohio, were the decision makers of the Foundation, the members of its Executive Committee, and representatives of the National Fraternity.

For months, the Fraternity and Foundation officers had been considering such a project. Many questions needed to be answered: Was the timing right? Would the alumni be receptive? What would be a realistic goal? Many more meetings were held, prominent alumni were consulted, and a National Feasibility study was started.

Alumni were enthusiastic. Phi Kappa Tau had never had a major capital drive and the time was felt to be right. President John Green and Executive Director John Meyerhoff, both long-time supporters of the idea of a capital campaign, reaffirmed the complete support of the National Fraternity. Based on Ewing Boles' statement and the results of the studies, the Decision was made to go ahead with the drive.

Early in the discussions, a goal of \$500,000 had been considered. That was later increased to \$1,000,000. At the Columbus luncheon, \$2,000,000 was set as the goal, and after strong indicators of early support were de-

termined, \$3,000,000 was decided as the campaign goal.

The Boles Challenge gift of \$1 million was offered on a matching dollar for dollar basis up to \$1 million. Those alumni joining with Ewing are his son, Dr. E. Thomas Boles, Jr., *William and Mary '39*, Dr. Ernest H. Volwiler, *Miami '11*, and Paul A. Elfers, *Wisconsin '24*.

The monies resulting from the Decision are to be used for three purposes, each basic to the educational goals of the Fraternity: to provide assistance to individual undergraduates through scholarships, loan funds, and Career Development programs; to assist chapters through work-study grants, IMPACT Leadership Training seminars, Leadership Consultants and an enhanced Domain Director program; and to benefit the Fraternity Headquarters through a renovation, modernization program.

The campaign has taken the traditional line common to many fund raising drives of not-for-profit organizations. Through the support and cooperation of the National Fraternity, an office was established at the Fraternity's National Headquarters in Oxford and a staff was assembled.

Early days of the staff were devoted to administrative details—the prepa-

ration of materials for printing, the development of office procedures and routines, the identification of solicitors and of loyal alumni who have the ability to make larger than average gifts.

During this quiet period of organization, the staff developed a plan and a strategy for the drive. The officers and members of the Executive Steering Committee made pertinent policy decisions.

The initial solicitation of current officers and those closely associated with the National Fraternity and the Phi Kappa Tau Foundation has been conducted and has met with tremendous success. It is with enthusiastic confidence that the staff reports, although this announcement is being prepared more than a month in advance of publication, the entire corps of current National officers will support the Decision with contributions.

As the campaign progresses, special appeals will be made to other members of the Fraternity's "Official Family," to former award recipients, to former national officers and to former staff members. Each alumnus of the Fraternity will eventually receive a personal invitation to participate in *The Decision for Phi Kappa Tau*.

THE HISTORY OF THE PHI KAPPA TAU FOUNDATION

The history of the Phi Kappa Tau Foundation is a story of insight, faith, loyalty and planning. Nothing comes into being or grows by accident and it can be said with conviction that the development of the Phi Kappa Tau Fraternity's Foundation was no accident.

The first name of the Foundation was the Educational Endowment Fund, Inc., and traces its beginnings back to the mid-1930s to another era and different economic conditions. In those days in the depth of the Depression, a group of past presidents of the Fraternity, along with a few other devoted alumni, looked toward future financial planning and took the necessary steps to form an Ohio non-profit corporation that might meet the requirements of the Internal Revenue Service to qualify as a tax exempt educational organization.

The date of incorporation is September 6, 1945 and the purpose clause of the Articles of Incorporation reads as follows:

"To make loans, with or without interest, to deserving students at American universities; to give scholarships, fellowships, awards, prizes and/or trophies for scholastic excellence; and, in general, to promote learning, high ethical standards and constructive citizen-

ship by all suitable means; and to do any and all acts and things (including the acquisition, use, investment and disposal of real and personal property) which are necessary, convenient or proper in the accomplishment of the foregoing objects."

The incorporators, all residents of Ohio, were Past National President Edgar Ewing Brandon, *Miami*; Founder William H. Shideler; Alumnus W. A. Hammond, *Miami*, subsequently a national president; Past National President Ewing T. Boles, *Centre*, and Past National President Henry E. Hoagland, *Illinois*.

On January 17, 1950, the Office of the Commissioner of Revenue issued its opinion that contributions to the Fund are exempt from federal income tax under the provisions of Section 101(6) of the Internal Revenue Code. This section through a modernization became Section 501(c)(3), under which the Phi Kappa Tau Foundation continues as an exempt organization to this date.

From meager beginnings when it was considered a successful year if a handful of alumni had contributed as much as \$5 each, the assets of the Foundation have grown through the generosity

of several alumni who have given or bequeathed large sums, and literally thousands of members who have supported the Foundation through annual contributions.

At the Annual Meeting of the Board of Trustees of the Foundation on May 14, 1983, the treasurer reported for the year total receipts of \$311,468, total disbursements of \$219,610 and net receipts of \$83,358. Total assets of the Foundation, as of April 30, 1983, were \$1,145,832. The short-term goal of the Foundation is to have assets of at least \$3 million.

The affairs of the Foundation are governed by its Board of Trustees. The day-to-day operations are under the direction of an Executive Committee and are carried out by the officers—chairman and chief executive officer, president, vice president, treasurer and secretary. The Fraternity's national president is a trustee.

It is a remarkable track record. The Phi Kappa Tau Foundation today is a tribute to those insightful alumni of the mid-1930s who recognized the need for a Foundation, those staunch leaders who have guided the affairs of the Foundation through the years. Special recognition is due Ewing T. Boles, *Centre*, who first envisioned an educational foundation and who was an incorporator.

Campaign Steering Committee

Fourteen Alumni Direct The Decision for Phi Kappa Tau



Ewing T. Boles



Dan L. Huffer

HONORARY CHAIRMAN

Ewing T. Boles, *Centre '16*, is a former National President of the Fraternity, and has held almost every other office in Phi Kappa Tau. Currently, he serves as Chairman of the Board of the Phi Kappa Tau Foundation. Mr. Boles was President and Director of The Ohio Company until he retired as Chairman of the Board of the securities firm in 1965. Still active as a director of several other companies, the Delta chapter alumnus is also a life member of the Board of Trustees of his alma mater. He currently serves as an investment consultant with Consulting Services, Columbus, Ohio.

GENERAL CHAIRMAN

Dan L. Huffer, *Ohio State '61*, has been President of the Phi Kappa Tau Foundation since 1981. He was previously Treasurer and a member of the Executive Committee. The Gamma chapter alumnus is currently Executive Vice President of BancOhio Corporation in Columbus, and held positions after graduation with Price Waterhouse and Bordon's, Inc. He is a member of the Financial Executives Institute, the American Institute of Certified Public Accountants and the American Management Association.

CAMPAIGN DIRECTOR

Jack L. Anson, *Colgate '48*, retired in September of 1982 as the first Executive Director of the National Interfraternity Conference, a position he held for 12 years. Previously, Jack was on the staff of The Phi Kappa Tau Fraternity for more than 20 years, first as a Field Secretary, then as Assistant National Secretary, Editor of *The Laurel*, and Executive Director. Currently, he is chairman of the Long-Range Planning Committee and a trustee of the Foundation. Jack authored *The Golden Jubilee History of Phi Kappa Tau* in 1956.

CURRENT OFFICERS COMMITTEE CHAIRMAN

John M. Green, *Nebraska Wesleyan '60*, recently completed his two-year term as National President of Phi Kappa Tau. He is a former National Vice President, National Council member, and Domain Director, John is currently President of the Wauneta Falls Bank in Wauneta, Nebraska, and holds the rank of Commander in the Naval Reserve. Having served as Secretary of the Board of Trustees of his alma mater, John is also a member of the Committee on Bank Management of the Nebraska Bankers Association.

PAST PRESIDENT'S COMMITTEE CHAIRMAN

Thomas L. Stennis II, *Mississippi State '58*, served Phi Kappa Tau as National President from 1970 to 1972. A partner in the Gulfport, Mississippi, law firm of Bryant and Stennis, the 1961 Shideler Award winner held a six-year term on the Fraternity's National Council. He is also a former Domain Director and National Education Director. Named in his honor, the Thomas L. Stennis II Award is presented annually to the outstanding Domain Director.



Jack L. Anson



John M. Green

HERITAGE GIFTS COMMITTEE

Lawrence L. Fisher, *Ohio State '60*, is a partner in the law firm of Vorys, Sater, Seymour and Pease in Columbus, Ohio. Currently serving as the Vice President of the Phi Kappa Tau Foundation, Larry was the 1964 Shideler Award winner. He is active in local and civic affairs.

Raymond A. Bichimer, *Ohio State '53*, is currently Phi Kappa Tau's National President. He is the most recent Vice President of the Fraternity and has served as President and Legal Counsel for the Phi Kappa Tau Foundation. The

Gamma alumnus is President of Means, Bichimer, Burkholder, and Baker Co., L.P.A., a Columbus law firm. Ray also owns real estate interests in Florida, and is a sports announcer for Bishop Hartley High School, where he is best remembered for the infamous "toin coss."



Harold H. Short



Ross E. Roeder

MEMBERS

Harold H. Short, *Colorado State '36*, is currently on the National Council of Phi Kappa Tau and serves as a Trustee for the Foundation. He is Chairman of the Board and Chief Executive Officer of Flatiron Companies, Boulder, Colorado, and serves as Director for several other companies. The Alpha Sigma alumnus is also a Director of his alma mater's alumni Foundation, the Rocky Mountain Eye Foundation, The Colorado Council on Economics Education, and numerous other civic and professional associations, including Rotary International. Harold is a former Vice Chairman of the Board and Director of The United States Chamber of Commerce.

Ross E. Roeder, *Michigan State '60*, is a member of the National Council, and serves on the Fraternity's Long-Range Planning Committee. He is currently Chairman of the Board and Chief Executive Officer of Fotomat Corporation, St. Petersburg, Florida. A former Phi Kappa Tau Field Secretary, Roeder holds a Masters in Business Administration from UCLA, and since his graduation has held executive positions with a number of major corporations. The Alpha Alpha alumnus served as Executive Vice President of Denney's Inc., President of Winchell's Donut House Division, and Vice President of International Operations for Baskin Robbins Ice Cream Corporation.

(continued on page 11)

The Mission of Phi Kappa Tau

YESTERDAY . . .

For most college men, the word fraternity conjures up memories of bygone days, fewer troubles, comparatively less responsibility—a period of individual learning and growth. The college or university was the grand, sometimes inflexible, institution which first drew us to the campus, but it was the fraternity which made the experience personal.

A number of us showed interest in the Phi Kappa Tau Fraternity and, fortunately, Phi Tau showed interest in us. It was to be an experience that few of us would forget, and one which none of us would have rewritten out of our lives. Phi Tau encouraged us in school and,

for more than a few of us, the Fraternity made sure we graduated.

We matured without necessarily knowing it, without a report card judging our new-found abilities. We learned the social graces which led to later successes by quietly imitating older brothers whom we respected. We shaped our own characters in admiration of others. We learned the true meaning of fellowship.

In short, within the atmosphere of brotherhood we found out who we were, as we learned from other men facing similar problems and challenges.

Whoever invented the college lecture hall failed to include a personal side to

the experience—for only as a learning human community does a college or a university show its true value. As we gathered our degrees and headed out into the real world we might have marched a bit naively, but we had an ebullient confidence and determination to make a mark in the world. We Phi Taus had found a rich and rewarding education in our fraternity which complemented the lectures and the final exams.

Today, no matter what we have become or been, we are better people having known our Brothers. And, at best, each of them can claim a richer life for having known us . . . for this is the true value of Phi Kappa Tau.

. . . TODAY AND TOMORROW

The mission of Phi Kappa Tau is multi-dimensional. It begins on a college or university campus and provides for personal, academic, spiritual and leadership growth. It encompasses the sharing of common experiences and the pursuit of excellence in all things and is spawned by a setting which will positively stimulate and significantly influence its members over the course of their lives, resulting in a life-long commitment toward making certain a similar fraternal experience will be available to generations yet unborn.

The Long-Range Planning Committee
January 8, 1983

The "National" outlook by alumni of Phi Kappa Tau has been the undeniable strength of the Fraternity since 1906. Today, this alumni faith in Phi Tau's potential is largely responsible for the existence of more than 85 chapters from coast to coast.

The benefits of membership which Phi Tau promotes also define the mission of the Fraternity:

Personal Growth: Maturing is based not only upon age, but experience. Therefore Phi Tau encourages each chapter to provide a framework of purpose and ideals for its members. The Fraternity believes that values

are inculcated through the example of others.

Academic Growth: Phi Tau believes that the fraternity experience should not only complement but encourage academic excellence. Support and encouragement within an atmosphere of Brotherhood have proven important to thousands of Phi Tau graduates.

Spiritual Growth: The phenomenon of fellowship is the lifeblood of each chapter. The relationship of a single man to his fraternity and his brothers gives an appreciation for other ways of looking at the world.

Leadership Growth: Every Phi Tau is

encouraged to be cognizant and appreciative of what it takes to be a leader. The Phi Tau experience offers a chance to fail without penalty, to learn from mistakes and to try again.

Phi Tau has had an outstanding history. It is not, however, the history of the Fraternity which makes Phi Tau so valuable, but rather the individuals which have joined its ranks and come under its influences for almost eight decades. They are men who have cared to influence the world they live in for the better. They tell the history of Phi Kappa Tau better than any stretch of events. They are the story of Phi Kappa Tau.

For The Undergraduates

Scholarships

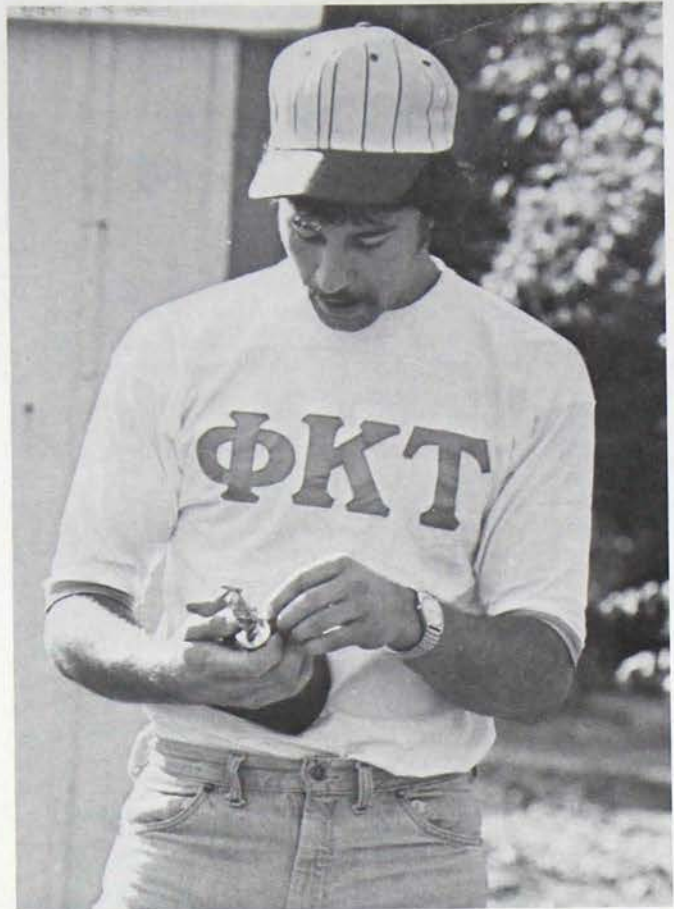
- Goal:** To provide financial assistance for worthy Brothers, helping them to stay in school and active in Phi Kappa Tau.
- Problem:** —Spiraling tuition costs/inflation
—Government cutbacks
—Middle class suffers frequent scholarship disqualification
—Brothers forced to quit college and Phi Tau
- Solution:** Build a permanent endowment for scholarships to outstanding students.
- Cost:** Endowment: \$500,000
- Benefits:** This program will provide assistance to the individual member in a time of need and result in increased loyalty to the chapter and the Fraternity.

Student Loans

- Goal:** To provide tuition loans at rates at or below the current prime to help Brothers stay in school and active in Phi Kappa Tau.
- Problem:** —High market interest rates
—Spiraling tuition costs/inflation
—Government cutbacks
—Middle class frequently ineligible for low interest loans
—Brothers forced to quit college and Phi Tau
- Solution:** Build a growing endowment for tuition loans which benefit outstanding students, sharing the interest paid with the principal of the scholarship fund.
- Cost:** Endowment \$400,000
- Benefits:** This program will build a more loyal and committed alumni base since it will benefit both Brother and Chapter. It will also give income to both the scholarship and student loan endowments.

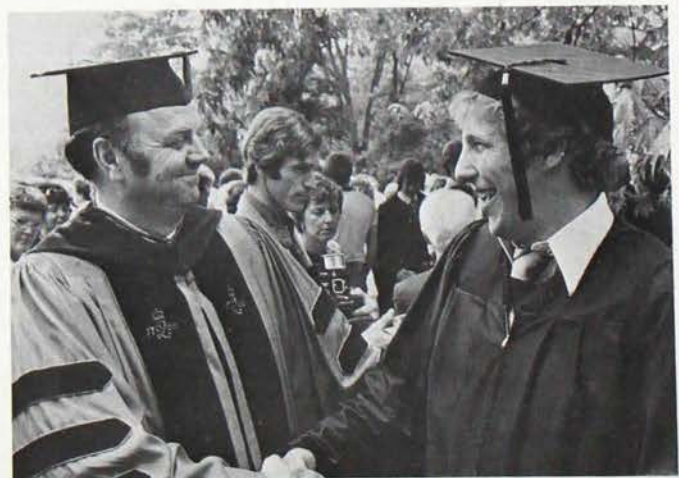
Career Development Programs

- Goal:** To provide a useful understanding of the job market and the business world, while teaching job search skills to improve student's marketability.
- Problem:** —Poor economy
—Intense competition
—Weak college placement programs
—Career "immaturity" among undergraduates
- Solution:** Provide a basis for interaction between successful alumni and interested undergraduates, coupled with professional job placement materials and programming.
- Cost:** \$150,000 Endowment
- Benefits:** Phi Tau undergraduates will have the advantages of knowledge, experience and position in the job market, while giving satisfaction and purpose to alumni membership in Phi Tau.



"In My View, the Decision for Phi Kappa Tau presents an opportunity to insure the future growth and success of Phi Kappa Tau. The crowning completion of this campaign will do far more than provide for the immediate financial needs of the Fraternity. It will endow those programs that will insure future generations of Phi Taus a strong and rewarding fraternity experience."

Dan L. Huffer, Ohio State '57
President, The Phi Kappa Tau Foundation



For The Chapters

Work-Study Leadership Grants

- Goal:** To provide chapters with a graduate school assistant who would live in the chapter house and provide experience, educational guidance and necessary supervision to new, or faltering undergraduate leadership.
- Problem:** —Need for better chapter management
—No daily role models for Phi Tau undergraduate leaders
—Burdensome expense of attending college
- Solution:** Provide scholarship assistance to encourage experienced, trained Phi Tau graduate students to reside in the campus chapter house.
- Cost:** Endowment \$400,000
- Benefits:** This program will build strong chapters and more responsive leadership, while benefitting the recipient with tuition assistance and new skills.

Impact Leadership Training Seminars

- Goal:** To provide leadership training for 500 undergraduates annually across the USA.
- Problem:** —Turnover in leadership through graduation creates leadership and management voids among younger members
—Inadequate evaluation of existing leadership training methods
—Few opportunities regionally to share leadership ideas
- Solution:** Teach leadership skills and appreciation, on a local, regional and national basis, to Phi Tau undergraduates.
- Cost:** \$500,000 Endowment
- Benefits:** Members will have better appreciation of leadership skills and traits, while becoming more aware of their fraternity as a national entity with clear standards and expectations of its membership.

Leadership Consultants

- Goal:** To provide tailor-made educational guidance and leadership and chapter management expertise to each chapter of the fraternity.
- Problem:** —Chapters isolated by geography and alumni fragmentation
—Cyclical nature of undergraduate leadership
—Weak understanding of national scope of Phi Kappa Tau
—Need for liaison between chapters on national and regional basis
- Solution:** Hire and train Phi Tau graduates who travel to each chapter in order to upgrade chapter management and performance and to make the Fraternity's educational programs a part of that chapter's activity.
- Cost:** \$450,000 Endowment
- Benefits:** Both alumni and undergraduate chapter members will benefit from evaluation, counsel,

workshops, and program promotions during well-planned visits from staff. The heritage of Phi Kappa Tau and conception of the national scale of the Fraternity will also be transmitted to chapters and university administrations.

Domain Director Programs

- Goal:** To provide seasoned alumni leadership to Phi Tau chapters on a regional basis, including local visits, regional leadership and management conferences, and liaison work with the National Headquarters.
- Problem:** —Fragmentation of alumni leadership
—Geographic isolation of some chapters
—Need for local alumni influence and leadership
—Need for coordination of chapters and services
- Solution:** Provide a greater level of systematic, well-trained Domain Director activity in 25 regions of the USA where Phi Kappa Tau is represented.
- Cost:** \$100,000 Endowment
- Benefits:** The existence of a well-coordinated Domain Director Program will provide for more unified, well-managed chapters on a regional basis, while stimulating more alumni activity and creating beneficial relations with the National Headquarters.



National Headquarters file photo

"The success of The Decision For Phi Kappa Tau, more than any other program currently underway in the Fraternity, has the potential for positively impacting on the success of our chapters nationwide.

The campaign will allow us to build Fraternity loyalty and help retain stronger members through a tremendously increased financial aid program. It will provide for chapter leadership services through endowment for IMPACT workshops, Leadership Consultants and Domain Directors, and it will enhance the Career Development program, thus providing a major recruiting attraction.

Strong chapters make a strong fraternity. The success of this campaign will provide the necessary resources for the foreseeable future to strengthen undergraduate programming for all chapters of Phi Kappa Tau."

John W. Meyerhoff, Colgate '61
Executive Director, Phi Kappa Tau

For The Headquarters

Renovation

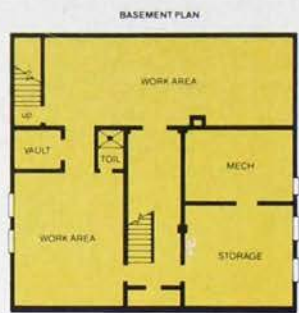
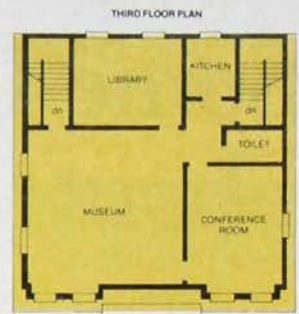
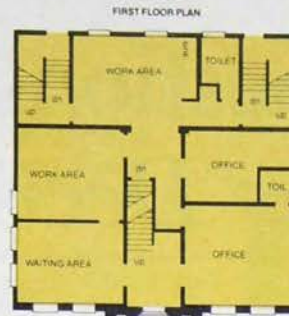
Goal: To have the most efficient, functional National Headquarters building in order to responsively serve the chapters and members of Phi Kappa Tau.

- Problem:**
- Flat roof causes moisture problems in walls
 - No improvements since 1931 construction
 - Lack of reception area disrupts clerical staff
 - Crowded offices discourage good work habits and morale
 - Laurel editor's office under basement stairwell
 - No meeting space
 - Museum disassembled to provide office space
 - No storage and display area for books by Phi Tau authors
 - Office equipment and production areas cramped
 - Inadequate space for computer systems
 - Mailing room is inadequate
 - Inefficient heating and air conditioning system
 - Inadequate printing facilities and space

Solution: Modernize the existing Headquarters through renovation and a new addition in order to provide needed space for staff, equipment and Fraternity documents and memorabilia.

Cost: \$500,000

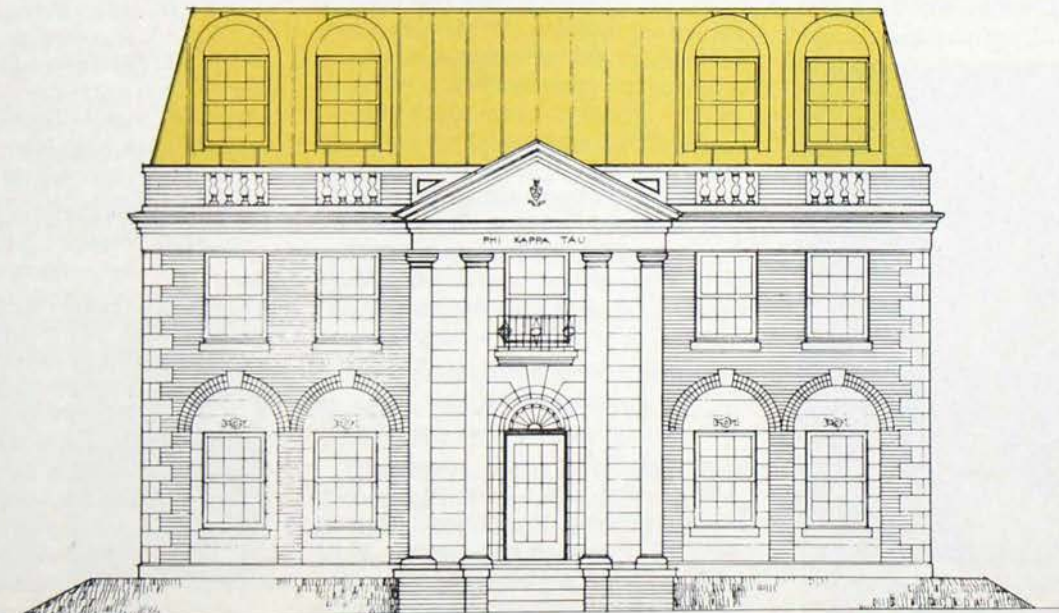
Benefits: The staff will be more efficiently and capably prepared to maintain and service the undergraduates, alumni chapters and heritage of Phi Kappa Tau.



Areas in color are either new construction or slated for remodeling.

"After visiting dozens of chapters and meeting with hundreds of alumni and undergraduates around the country, I have become convinced of the importance of a strong national character, purpose and plan for Phi Kappa Tau. We must continue to provide our membership with thoughtful, attainable ideals which will confirm their own beliefs, encourage their participation and retain their loyalty."

John M. Green, Nebraska Wesleyan '60
32nd National President, The Phi Kappa Tau Fraternity



An Interview with the Leaders

Some Questions and Answers about *The Decision*

The Decision for Phi Kappa Tau has been in the planning stages for almost two years. While meetings about the Campaign have involved dozens of alumni across the country, three stalwart alumni—Ewing Boles, Dan Huffer, and Ray Bichimer, all of Columbus—have been especially committed in laying the groundwork. In anticipation of the interest which the announcement of the Campaign will generate, the editorial staff of *The Laurel* recently spoke with these men about "The Decision".

LAUREL: Mr. Boles, since you were involved in its creation, what exactly is the Foundation?

BOLES: We created the Foundation for the educational benefit of the members of Phi Kappa Tau Fraternity. The Foundation contributes to the future success of the Fraternity through educational programs which benefit the members, strengthen the chapters, and improve the service capabilities of the Headquarters. Contributions to the Foundation are tax-deductible.

LAUREL: Mr. Huffer, why is the



"... existing programs... have never been adequately funded." E.T.B.

Foundation in the "business" of education?

HUFFER: The primary mission of Phi Kappa Tau is to foster human development—another way of saying education. The Foundation simply provides the means.

LAUREL: Mr. Bichimer, from your perspective as the incoming National President, why is the Campaign necessary?

BICHIMER: There are two overwhelming needs. Primarily, the work of the National Fraternity and its staff takes place within the individual chapter houses, working with undergraduates and alumni to constantly insure and improve the Phi Tau experience. Unfortunately, the scope and success of this work is limited by the costs of on-site programs for individual and chapter contact.

Secondly, the National Headquarters has been the outlet for all undergraduate services and programs, and the conservator of the records and heritage of the Fraternity. Today, with a membership which has grown more than eight-fold and with more than twice as many chapters, the National Headquarters is inadequate in space to meet the service needs of 50,000 members, and 86 chapters and colonies.

LAUREL: What are the principle objectives of this Campaign, Mr. Boles?

BOLES: Well, as Ray mentioned, the Endowment support of \$2,500,000 will strengthen existing educational programs which have never been



"... the Campaign is meant to insure the sound future of each of our chapters—an achievable goal." R.A.B.

adequately funded. The Foundation expects greater results by supporting the comprehensive programs and systems already in place. With a firm financial base, we will be in a good position to develop new programs as they are needed.

Also, we must bring the Headquarters building up to 1983 standards. The \$500,000 cost includes a new computer system for membership maintenance and chapter service.

LAUREL: Getting tough for a moment, Mr. Bichimer, why should a brother give his money to the National Fraternity, especially if he thinks they didn't help his chapter when they needed it?

BICHIMER: Probably they were not capable and that's what we are attacking today. Although the National Fraternity cannot take 100% responsibility for the health of a chapter, its

primary mission is to monitor and service each chapter. Resources, however, are presently limited.

The Campaign is meant to insure the sound future of each of our chapters—an achievable goal, if the Campaign is successful.

LAUREL: *Mr. Boles, you were instrumental in the creation of Phi Tau from Phrecon in 1917, and the Foundation's birth in 1945—how would you describe the relationship between the Foundation and the Fraternity?*

BOLES: Although they are separate organizations with separate governing boards, the Foundation exists to support the Fraternity's members. Internal Revenue Service Rules and Regulations guide the operation of the Foundation, but it is the educational funding arm of Phi Kappa Tau.

Essentially, the Foundation shares and promotes the educational and charitable goals and objectives of the Fraternity.

LAUREL: *What if a brother considers himself loyal, Mr. Huffer, but feels his support ought to go to his chapter?*

HUFFER: That's good. But maybe the best way to support your chapter at this point in time is to support the National Fraternity—to put it in a position to help your chapter. There are many examples of chapters which have been rescued by the National Council, Foundation and staff. As a matter of fact, few have not. Alumni must support the National Fraternity if it is expected to protect the chapters.

There are, however, several vehicles of support which benefit both the local chapters and the

National Fraternity. For example, scholarships and loans can be designated for recipients from specific states or chapters, or with certain qualifications.



"... there are many examples of chapters which have been rescued by the National Council, Foundation and Staff... few have not." D.L.H.

(continued from page 5)

John F. Cosgrove, Florida '68, is a Representative in the Florida State Legislature, and an Attorney in Miami. He currently serves as a member of the National Council of Phi Kappa Tau, a Trustee of the Foundation, and is a past President of the University of Florida Alumni Association and Florida Blue Key. John is involved with numerous community and professional organizations including the Greater Miami Chamber of Commerce, Kiwanis Club of Miami, Coral Gables Knights of Columbus, and the Florida Bar Association.

OFFICIAL FAMILY COMMITTEE CHAIRMAN

Thomas C. Cunningham, Nebraska Wesleyan '60, was National President of Phi Kappa Tau from 1979 to 1981, and served as Vice President from 1977 to 1979. The Upsilon alumnus



Tom Cunningham



William D. Jenkins



Melvin A. Dettra



John Meyerhoff

worked as a Field Secretary and Director of Chapter Development for the National Headquarters for five years. Presently, Tom is Director of Personnel at Vought Corporation in Dallas, Texas. Tom's duties include the administration and recruitment of all Vought employees. Prior to Vought, he served as Director of Personnel for Wilson Foods, a \$2 billion subsidiary of LTV Corporation. Tom has been instrumental in the development of Phi Kappa Tau's Career Development Program, and the IMPACT leadership workshops.

FORMER STAFF COMMITTEE CHAIRMAN

William D. Jenkins, Bowling Green '58, served as a member of the National Headquarters staff for more than 15 years, as a Field Secretary, Assistant National Secretary and Executive Director. Bill recently left Compolith Graphics

in Indianapolis to become Vice President of Development Dynamics Group, Inc.

GENERAL ALUMNI CHAIRMAN

Melvin Dettra, Jr. Ohio State '45, served as Phi Kappa Tau's National President from 1968 to 1970. He was a member of the National Council for six years, was a Domain Chief in Northern Ohio, and directed the IMPACT Leadership program in 1968. Holding numerous degrees from the Universities of Michigan, Kentucky and Ohio State, Mel is currently the Director of Health Guard/Blue Cross in Akron, Ohio.

UNDERGRADUATE CHAPTERS CHAIRMAN

John W. Meyerhoff, Colgate '61, is in his fifth year as the National Fraternity's Executive Director. The Alpha Upsilon alumnus holds a Bachelors Degree in History, and a Masters in Education. John served as a Lieutenant Commander in the Navy and was a college basketball coach for 11 years before joining the Phi Tau staff. In 1979 he was named coach of the year for Virginia and the Carolinas with a lifetime record of 210 wins and 134 losses. John is active with the Cincinnati Association Executives, Fraternity Executives Association, and is an avid golf enthusiast and Corvette owner.

Early Contributors Give Major Support

Ewing T. Boles, *Centre '16*, is a man whose list of career accomplishments and lifetime service to Phi Kappa Tau could fill several issues of this magazine. It was Ewing Boles who, as National President in 1917, persuaded the chapter to return as the Alpha chapter of the Fraternity which had just changed its name to The Phi Kappa Tau Fraternity. Since then, his non-stop loyalty to Phi Kappa Tau has helped in the impressive growth of a National Fraternity. With just 319 members at the time of his initiation, The Delta alumnus has seen the fraternity grow to more than 56,000 brothers living world-wide. Today, at 88 years of age, Mr. Boles continues to actively support the Fraternity as Chairman of the Phi Kappa Tau Foundation. He brings to that position more than 50 years of experience in investment banking, including his service as Chairman of the Board of the Ohio Company until his retirement in 1965. Civic Affairs and Philanthropy occupy a considerable amount of Mr. Boles' time, but he is never too busy to share his quick wit and a warming sense of humor. He has earned many honors for his dedication to his Fraternity, College, and Community. Those who know and work with him are fortunate—his enthusiasm and generosity are contagious.



Ewing T. Boles



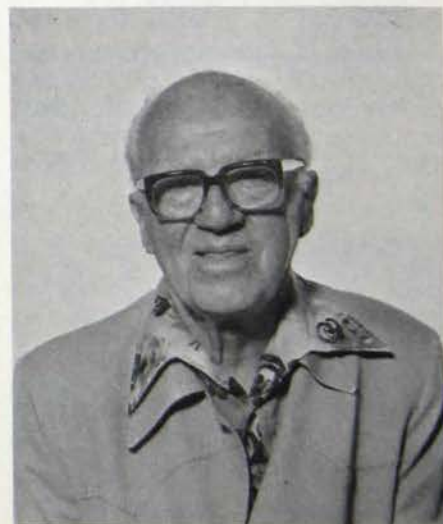
Robert G. Aldridge

Robert G. Aldridge, *Washington '54*, was elected to the National Council at the 45th National Convention held in Oxford, Ohio in 1981. He is an architect and principal in the firm of Dykeman, Ogden, Aldridge and Quinton, based near Seattle, Washington. The firm is involved in a wide variety of projects, ranging from residential housing to \$30 million shopping centers. A principal in the founding of Phi Kappa Tau Properties, Inc., Bob currently serves that organization as President. As you can see from the photo at left, the Alpha Pi alumnus is an avid sailer.

Paul Elfers' suntanned good looks and flashy trousers are dead giveaways that the Wisconsin graduate has a passion for golf. During the colder months of the year Brother Elfers lives with his wife in a beautiful home nestled in the mountains surrounding Reno, Nevada. In the summer, however, he escapes the heavy snows of Incline Village for the breathtaking citrus region of Pauma Valley in Southern California. His winter retreat is more modest, but access to a beautiful Bobby Jones course across the road is enough solace.

Brother Elfers was initiated in Phi Kappa Tau at the University of Wisconsin in Madison where he received a B.S. in Chemical Engineering in 1925. An active member, he was elected vice president and president of Omega chapter. He also served on the Wisconsin Interfraternity Council, was active in ROTC and competed on Phi Tau intramural teams in wrestling, basketball and baseball.

A retired executive from Fisher Controls, Inc., of Marshalltown, Iowa, Mr. Elfers had a wide variety of lifetime business interests, ranging from farming and citrus groves to apparel manufacturing and investments. He has two children, and is a member of Rotary, Elks and the Congregational Church.



Paul A. Elfers

National Headquarters file photo



Dr. E. Thomas Boles, Jr.

E. Thomas Boles, Jr., M.D., *William & Mary '39*, is currently the Chief of Pediatric Surgery at Children's Hospital in Columbus, Ohio and the Director of Pediatric Surgery at Ohio State University's College of Medicine. The Alpha Theta alumnus completed his pre-medical education at Ohio State and William & Mary, then received his M.D. from Harvard University in 1945. Dr. Boles is a past president of the American Pediatric Surgical Association, a member of the International Society of Surgery, and an author or co-author of more than seventy-five medical monographs. He is married, has four children, and is the son of Ewing T. Boles, Centre '16, Chairman of the Board of the Phi Kappa Tau Foundation.

John Franklin Shields McMullan, *Delaware '56*, was a loyal and devoted member of Phi Kappa Tau in every sense of the words. A member of Alpha Gamma chapter at the University of Delaware where he was initiated in 1956, until his death on February 1, 1982, Frank adhered to his basic belief in the worth of fraternities. He left a bequest of \$50,000 to the Phi Kappa Tau Foundation.

A Certified Public Accountant and a Professor of Taxation by profession, he guided the financial affairs of Alpha Gamma chapter and the chapter House Corporation for over 20 years. He received the Fraternity's Phi Award in 1972 and was a regular attendee at the Fraternity's Conventions.

Although in poor health for many years, Frank was also actively involved with the Boy Scouts of America for over 25 years and with Alpha Phi Omega, a national service fraternity, where he served as an officer and a Board member.



J. Franklin S. McMullan

Dr. Ernest H. Volwiler, *Miami '11*, has had a remarkable career as a research chemist for Abbott Laboratories, an international company he eventually led as Chairman of the Board. At 90, he has strong voice, a firm handshake, and a keen interest in the developments of science and chemistry today.

Dr. Volwiler earned a Ph.D from the University of Illinois, and holds nine honorary doctorates. He served as a major in the chemical warfare reserves from 1925 to 1938, and was a member of the research team which helped develop the drug Sodium Pentathol, a widely-used anesthetic. The Alpha alumnus has been President of the American Drug Manufacturers Association, The American Chemical Society, and Chairman of the Board of Trustees for Lake Forest College. He has won numerous awards from leading universities, the World Medical Association, the American Institute of Chemists and other noted organizations.



Dr. Ernest H. Volwiler

J. Oliver Amos, *Miami '28*, calls himself a "retired publisher" but he is the Chairman of the Board of Amos Press, Inc., one of Ohio's oldest, largest and best known publishing firms. Located in Sidney, Amos Press publishes the *Sidney Daily News*, *Coin World*, *Linn's Stamp News*, *Stamp World* and *Cars and Parts*.

Initiated at Alpha chapter at Miami University in 1928, he was graduated in 1931, earned a Masters Degree at Northwestern in Journalism in 1932 and received an Honorary Doctor of Laws and Letters Degree in 1973 from Miami. From 1951 to 1972 he served as a Trustee of Miami and has been a Trustee of the Phi Kappa Tau Foundation since 1979. He was a 1974 Taylor A. Borradaile Award winner, the Fraternity's Outstanding Alumnus honor.

Oliver and his wife, Peg, a 1983 recipient of Miami's Bishop Medal for outstanding community service, are the parents of two children. William T. Amos, his cousin, is also a member of Alpha chapter.



J. Oliver Amos

(continued on page 14)

National Headquarters file photo

National Headquarters file photo

Photo courtesy of Miami University



John F. Cosgrove

(continued from page 13)

John F. Cosgrove, Florida '68, is a Representative in the Florida State Legislature from the 109th District in Dade County. He is a member of the National Council, elected at the 44th National Convention held in Knoxville, Tennessee in 1979, and serves as a Trustee of the Foundation. An attorney in Miami, Cosgrove is active in bar association, civic, community and political affairs. President of Alpha Eta chapter for two years while in college, John was president of the University of Florida Alumni Association, Omicron Delta Kappa, Sigma Delta Kappa, and a member of Florida Blue Key. Married in December, 1981, he and his wife Bernie are the proud parents of two children.

Selected Gift Opportunities

Named Endowments will provide income of at least 10% of the principal in support of the donor's gift designations. Brothers, families or friends may wish to honor or memori-

alize a fellow Phi Tau through a named endowment. All gifts of \$10,000 or more can be memorialized.

For The Undergraduates

Scholarship Endowments (50 \$10,000 each)	\$500,000
Student Loan Endowments (8 \$50,000 each)	\$400,000
Career Development Program Endowment	\$150,000

For The Chapters

IMPACT Leadership School Endowment (20 \$25,000 each)	\$500,000
Work-Study Leadership Endowments (16 \$25,000 each)	\$400,000
Leadership Consultant's (Field Secretaries) Endowment	\$450,000
Domain Director Program Endowment	\$100,000

For The National Headquarters Service

Specific areas of the National Headquarters may be donated as a tribute to the donor, or to another brother. Permanent plaques will be placed in the respective rooms. Please contact a member of the Foundation Staff at the Fraternity Headquarters in Oxford, Ohio for details.

Foundation Opens Office in Oxford

In January, the Phi Kappa Tau Foundation established an administrative office in Oxford, Ohio, on the second floor of the Fraternity's National Headquarters building. Previously, almost all Foundation-related work originated from Columbus, Ohio where several Executive Board members and Trustees live.

The Foundation maintains a staff of three employees including a Campaign Director, Assistant Director of Development, and a Development Secretary.

Jack L. Anson, Colgate '48, works several days a week as the Campaign Director for *The Decision For Phi Kappa Tau*. Jack's long-time association with the Fraternity and its alumni have made him an invaluable asset to the \$3,000,000 Campaign. Jack's service to Phi Tau dates back to 1948 when he served as field secretary, then as assistant secretary, editor of *The Laurel*, and administrative secretary. In 1961



Jack L. Anson



J. Luke Strockis

he was named as national secretary of the Fraternity, a position now called executive director. In 1970, Jack left Phi Kappa Tau to be the executive director of the National Interfraternity Conference, a post he held for twelve years until his retirement last September. Jack's duties as Campaign Director include the identification, cultivation, and coordination of the solicitation of prospective donors.

A 1981 graduate of California State-Long Beach, **J. Luke Strockis** has been the Foundation's Assistant Director of Development for one and a half years. Luke has earned degrees in journalism and radio and television communications and served a one-year term as president of the Beta Psi chapter. Luke is Jack Anson's Campaign Assistant and the primary full-time staff man for the Foundation. Luke also directs the annual appeal and works with Area Alumni Associations around the country.

Julie H. Nelson is Phi Tau's Development Secretary, handling daily correspondence and operating the data processing systems connected with alumni development. Julie is a 1980 graduate of Transylvania University in Lexington, Kentucky and an alumna of Kappa Kappa Gamma. She recently married Ben F. Nelson, Phi Kappa Tau Director of Field Operations.

WAYS OF GIVING

Support of Phi Kappa Tau has traditionally been based on two things: the importance of providing positive influences for young men; and the value a brother places on his own undergraduate fraternity experience. Without minimizing this loyalty, the Phi Kappa Tau Foundation realizes that maximizing income tax benefits is a legitimate aspect of every brother's financial planning. Since gifts, transfers, and gifts of both real and personal property to the Phi Kappa Tau Foundation are deductible, we trust the following information will encourage creative and thoughtful support of *The Decision For Phi Kappa Tau*.

CASH

Gifts and pledges paid in cash are the most convenient way to support the Campaign. The contributor is entitled to an income tax deduction for the entire amount of the gift for the year in which the pledge is paid. The Foundation is qualified under the provisions of the Internal Revenue Code as "public", so if your gift exceeds 50% of your gross income for that year, you may carry your contribution forward and deduct it in the five succeeding tax years.

Because of the income tax deduction, your gift costs you less than its actual value to Phi Tau. For example, if you are in the 50% income tax bracket, your actual gift of \$10,000 costs you only \$5,000 because your income tax has been reduced by \$5,000. Also, since a small group of brothers are matching every contribution, dollar for dollar, the value of your gift is automatically doubled! You get \$20,000 worth of benefits for a net cost to you of \$5,000.

SECURITIES

A gift of securities is an ideal way to support Phi Kappa Tau and not pay tax on capital gains. The market value of the securities on the date of the gift is available as a tax deduction and you do not have to recognize the capital gain for tax purposes. If your gift exceeds certain limitations for that year, your contribution can be carried forward and deducted in the five succeeding tax years, until your gift is completely deducted.

Because you will not pay a capital gains tax, the actual cost to you as a donor is often far less than the value of your gift to Phi Tau.

Contributors should not sell long-term appreciated securities; instead, to avoid taxes, brothers can instruct their brokers to assign the securities to the Phi Kappa Tau Foundation, Inc.

REAL ESTATE

A brother and his wife may be literally surrounded by an extremely advantageous way to reduce their income taxes. It is possible to donate a primary residence, vacation home, or farm to the Phi Kappa Tau Foundation and reserve the right to use the property or farm the land as long as the brother or his spouse lives.

Financial obligations are lessened and personal cash resources grow because of the immediate and substantial income tax deduction. Such advantages make this method of supporting Phi Tau one of the most favorable means of charitable giving available.

Outright gifts of real estate are subject to the same benefits governing the transfer of securities, again avoiding the capital gains tax on appreciated property in most cases. In all of these cases, a donor must rely on his tax advisor for the specific tax effect of his gift on his particular tax situation.

BEQUESTS

The stability of Phi Kappa Tau has always benefited by gifts from brothers made by Will. Cash, securities and property all provide favorable tax benefits to the donor's estate. Gifts can easily be made in specific amounts or as a percentage of your estate. Additionally, you may specify where and how your gift is to be used, or you may leave your gift for the best use of Phi Tau.

LIFE INCOME TRUSTS AND ANNUITIES

Many brothers who want to assist Phi Kappa Tau are concerned about providing for retirement and cannot afford to give up the income their assets produce. Others, quite properly, have continuing obligations to wife and family.

For these brothers Phi Tau has several mutually beneficial plans which provide *lifetime* income, a *higher* rate of return on investments, and *extremely attractive* income tax and estate tax deductions. Each plan allows you to transfer an asset to the Phi Kappa Tau Foundation or a trustee of your choice in exchange for an agreement that will guarantee you and/or a loved one lifetime income.

THE UNITRUST provides an annual percentage income based on the fair market value of the assets transferred to the Phi Kappa Tau Foundation. The trust value is assessed annually, so the amount you receive varies with the changing value of the property. You may add to the UNITRUST at any time without creating a new trust.

THE ANNUITY TRUST provides annual income fixed at the trust's inception and based on the initial fair market value of the assets. Subsequent increases or decreases in the trust's value have no effect on the annual income.

THE POOLED INCOME FUND is somewhat different from both the unitrust and the annuity trust. As the name implies, it is a common fund comprised of many separate contributions of assets. Investment risks are therefore minimized and investment opportunities are maximized. The interest from the investments can go back to a brother or any other designated recipient.

LIFE INSURANCE

If your life insurance needs have diminished, or your policy has outlived its original purposes, you may wish to consider putting that money to work for Phi Kappa Tau. This can be done in two ways:

First, you can assign the existing policy to Phi Kappa Tau. You can take a tax deduction for the cost basis of the policy or its fair market value. If the policy is not fully paid up, you can deduct any future premiums as you pay them.

Secondly, you may designate Phi Kappa Tau as the beneficiary, deciding whether or not you will continue to pay the premiums. This arrangement offers substantial tax benefits to your estate when the policy matures and your estate becomes entitled to a charitable deduction.

GIFTS IN KIND

Gifts of tangible personal property can provide unique tax benefits to the donor. Such items as boats, autos, works of art, china, silverware, coin and stamp collections with a reasonable market for resale can be given to the Foundation and in most cases an income tax deduction is available to the donor, based on the fair market value of the asset.

The Heritage Gifts Committee, a group of brothers from across the nation who are well-known professionals in this area, stands ready to work with you and your advisors to develop a strategy of giving which is advantageous to both you and Phi Kappa Tau.

Questions should be addressed to:
Heritage Gifts Committee
The Decision For Phi Kappa Tau
15 North Campus Avenue
Oxford, Ohio 45056

Phi Kappa Tau—In Retrospect

During the course of studying the feasibility and planning for the Campaign, contact was made with many alumni around the country. When discussing the enormity of a \$3,000,000 campaign, the inevitable subject of justifying fraternities in 1983 was often raised.

In the spirit of the enthusiasm already shown for *The Decision for Phi Kappa Tau* we share here some of your fellow brothers' thoughts about fraternity . . . and, of course, Phi Kappa Tau.

Phi Kappa Tau provides an environment for young men to acquire social awareness . . . to become aware of situations they are going to encounter in the future . . . it develops the leadership aspects of the individual.

Robert M. Maynard, Miami '41
Partner, National Director of Manpower,
Price Waterhouse, Inc.
New York, New York



The commitment made by an individual when joining Phi Kappa Tau is returned back to him *many* times over by the Fraternity, its individual members and the public at large. People respect and prefer individuals who can and do make commitments and contributions to others.

Samuel J. Behringer Jr., Michigan State, '69
Group V.P. and General Counsel, Michigan National Banks
Former Assistant U.S. Attorney
Detroit, Michigan



Phi Kappa Tau brought something into my life that cannot be put into words. Although the Depression Years seemed to hold more sadness and disappointment than one should face in a lifetime, they were easier to take with the Brothers around . . . Phi Tau *lifted* the spirits.

Will C. Davis, Coe '27
Mechanical Engineer (ret.)
Cedar Rapids, Iowa



Phi Kappa Tau was the *turning point* in my life. The opportunities it provided allowed me to recognize my latent abilities for dealing with and organizing people—this ultimately led to great success in several areas of my life.

Ronald L. Sptrino, Case Western
Business Director, American Place Theatre
Senior V.P., Building Systems Corp. (ret.)
New York, New York



Old Main, site of the Fraternity's founding in 1906.

Membership in Phi Kappa Tau was the key to maximizing the amount of personal, social and educational growth that I was privileged to absorb during my college years.

Harold H. Short, Colorado State '36
Chairman and CEO, Flatiron Companies
Boulder, Colorado
National Council, The Phi Kappa Tau Fraternity



Young people are searching for an *identity* in an impersonal, corporate world. The Fraternity offers a chance for individual growth and character development.

John F. Cosgrove, Florida '68
Florida House of Representatives
Attorney, Cosgrove Law Offices
Miami, Florida
National Council, The Phi Kappa Tau Fraternity



My Phi Tau membership offered me immediate security in college—that important sense of belonging and pride. It also offered me *unlimited* opportunities

for leadership and growth, to say nothing of a high powered social life. I still belong . . . and that's a good feeling.

Oliver R. White, Berkeley '54
President, Oliver White, A.S.I.D. and Associates
Carmel, California



Things have really gone well since graduation . . . Phi Kappa Tau has been a *major* part.

Thomas R. Sisson, Syracuse '57
Chief Administrative Analyst, City of Los Angeles
Los Angeles, California



Fraternities are one of the *greatest* opportunities a young man has. They mold character and the mind. A man learns decision making . . . and he can make mistakes and be forgiven.

Thomas L. Stennis II, Mississippi State '58
Attorney, Bryant and Stennis
Gulfport, Mississippi
27th National President ('70-'72), The Phi Kappa Tau Fraternity

Our List of Contributors

With Grateful Appreciation

The Campaign Leadership has chosen the following format for recognizing the major subscribers to *The Decision For Phi Kappa Tau*. The current and future members of each gift circle will be listed in each issue of *The Laurel* for the duration of the Campaign, and then annually for five years. Membership is open to all brothers, families, corporate and family foundations, and friends of Phi Kappa Tau.

Qualifications for the circle include commitments of cash and pledges, securities, real estate and other negotiable gifts in kind, bequest, life income trusts and annuities, income interests and life insurance.

Those listed in the ETERNAL STAR CIRCLE have given or pledged \$100,000 or more; the FOUNDERS' CIRCLE includes those between \$50,000 and \$99,999; the CHAIRMAN'S CIRCLE is from \$25,000 to \$49,999; the PRESIDENT'S CIRCLE is from \$10,000 to \$24,999; the TRUSTEES' CIRCLE ranges from \$5,000 to \$9,999 and the COUNCILORS' CIRCLE includes those between \$1,000 and \$4,999.

The names of those persons whose gifts were cash, negotiable assets or pledges extending over a period of no more than five years are identified below in bold type. Those whose gifts are in the form of bequests, insurance or pledges for a period exceeding five years are listed in regular type.

A handful of undergraduate chapters were approached for leadership gifts prior to the announcement of *The Decision For Phi Kappa Tau*. These outstanding chapters are listed in the CHAPTER'S CIRCLE and have each pledged a minimum of \$1,000 in support of the campaign.

**The Estate of Evelyn N. Medick, the widow of
Charles W. Medick, Sr., Ohio State '21**
John W. Meyerhoff, Colgate '61

TRUSTEES' CIRCLE

F. Harrison Green, Mississippi '66
John M. Green, Nebraska Wesleyan '60
Dan L. Huffer, Ohio State '57
Walter G. Strange, Jr., Auburn '70

COUNCILORS' CIRCLE

Col. Ralph K. Bowers, Mt. Union '15
Tim W. Collins, Transylvania '78
Gerald B. Curington, Florida '59
Fred J. Grumme, Purdue '34
Richard D. Harrison, Jr., Ohio '79
William D. Jenkins, Bowling Green '57
John A. Johnson, Mississippi State '64
Steven C. Krohn, Southern Mississippi '81
Robert D. Leatherman, Akron '59
K. Steven Lilly, Evansville '80
Patrick McGrath, Florida '75
Frederick E. Mills, Ohio State '66
Floyd R. Newman, Cornell '12
Jeffrey L. Rivard, Central Michigan '65
Timothy O. Simon, Maryland '76
J. Luke Strockis, Cal State-Long Beach '77
Keith S. Vasey, Colorado State '80

CHAPTER'S CIRCLE

Alpha (Miami University)
Beta (Ohio University)
Zeta (University of Illinois)
Beta Epsilon (University of Southern Mississippi)
Gamma Eta (East Carolina University)
Delta Beta (University of Evansville)

ETERNAL STAR CIRCLE

Robert G. Aldridge, Washington '54
Ewing T. Boles, Centre '16
Dr. E. Thomas Boles, Jr., William and Mary '39
Paul A. Elfers, Wisconsin '24
Ross E. Roeder, Michigan Tech and Michigan State '57

FOUNDERS' CIRCLE

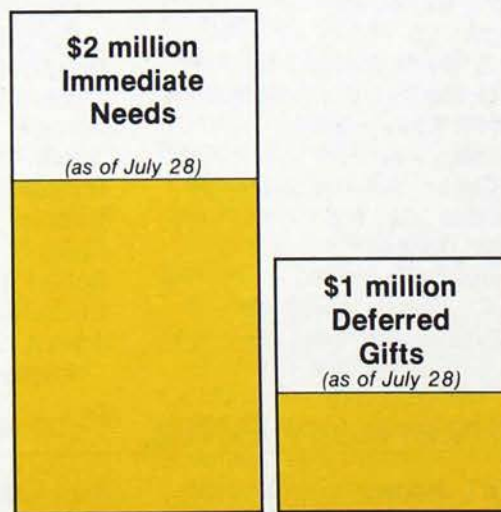
Anonymous
The Estate of J. Franklin S. McMullan, Delaware '56
Dr. Ernest H. Volwiler, Miami '11

CHAIRMAN'S CIRCLE

J. Oliver Amos, Miami '28
Rea A. Axline, Cal-Berkeley '28
John F. Cosgrove, Florida '68
Ben F. Nelson, Transylvania '78, and Julie H. Nelson,
Kappa Kappa Gamma

PRESIDENT'S CIRCLE

Jack L. Anson, Colgate '48
Raymond A. Bichimer, Ohio State '53
Lewis M. Culver, Colorado '24
Thomas C. Cunningham, Nebraska Wesleyan '60
Gregory D. Hollen, Maryland '75
Jeffrey G. Korb, Evansville '74
Edward (Ted) A. Marye, Jr., Kentucky '48



PHASE I GOAL

1982-83

DEVELOPMENT FUND DONORS

The Trustees of the Phi Kappa Tau Foundation gratefully acknowledge those loyal alumni who have made contributions to the 1982-83 Development Fund. *Only gifts received between January 1, 1982 and June 30, 1983 are listed.*

Contributors of \$500 or more are named to the **FOUNDER'S STAR SOCI-**

ETY; \$100 to \$499 givers are members of the **DIAMOND AND PEARL SOCIETY**; Contributors of **ANNIVERSARY GIFTS** gave \$76 on the occasion of the Fraternity's 76th birthday in 1982, or \$77 for 1983. Donors from \$78 to \$99 are also listed as Anniversary Gifts. **HARVARD RED AND GOLD** members gave \$50 to \$75. **MEMORI-**

AL GIFTS are listed at the request of donors who wished their gifts to honor or memorialize special brothers of Phi Kappa Tau.

Alumni making two or more gifts to the Development Fund during the period from January 1, 1982 through June 30, 1983 are recognized under chapter headings with a (+).

Founders' Star Society

J. Oliver Amos, *Miami '28*
William T. Amos, *Miami '28*
Rea A. Axline, *Cal-Berkeley '24*
Raymond A. Bichimer,
Ohio State '53

Ewing T. Boles, *Centre '14*
Paul A. Elfers, *Wisconsin '24*
Keith L. Gregory, *Idaho '61*
William N. Liggett, *Miami '39*

Hugh C. Nichols, *Miami '20*
Ross E. Roeder,
Michigan State '58
Harold N. Wilson, *Ohio State '19*

Diamond and Pearl Society

Jim H. Alderfer, *Muhlenberg '63*
John W. Anderson, *Texas '51*
James G. Annos,
Bowling Green '51
Jack L. Anson, *Colgate '47*
Robert J. Barrett, Jr., *Ohio '39*
W. A. Baxter, *Pennsylvania '27*
Vincent P. Blair, *Ohio State '27*
Kevin J. Boatright,
Nebraska Wesleyan '71
Dr. E. Thomas Boles, Jr.,
William and Mary '39
Edward C. Borden, Jr.,
Michigan Tech '74
Fred Breitling, *Miami '57*
Joseph D. Bristow,
Mississippi State '49
C. M. Britt, *Transylvania '35*
James G. Brown, Jr.,
Northern Michigan '72
Howard J. Buchanan,
Michigan '53
William S. Budd, *Illinois '31*
Gerald G. Carlton, Jr., *Ohio '58*
Howard M. Cavanaugh,
Rensselaer Tech '27
Ray A. Clarke, *Bowling Green '51*
Will C. Davis, *Coe '28*
Robert W. Dubbell,
Southern California '30
William F. Eberle, *Cornell '48*
Ernest E. Emswiler, *Ohio State '31*

F. Frederick Fether,
Bowling Green '51
Raymond D. Gage, *Hobart '52*
Jon T. Gardner, *Indiana '50*
Huffman R. Heisey, *Ohio State '58*
Lorentz R. Hodges Jr.,
Georgia Tech '52
Richard L. Hodgdon,
Tennessee '75
Joseph W. Holton, *Kentucky '25*
Donald E. Jankura,
Michigan State '50
William D. Jenkins,
Bowling Green '57
Robert E. Jensen, *Miami '57*
Dr. Bing F. Johnson,
Colorado State '54
Vern W. Johnson,
Kansas State '29
George E. Keefe, *Pennsylvania '27*
James M. Keffer,
Cal State-Fullerton '74
Ray C. Kelly, *Akron '69*
Richard W. Kite, *Cal-Berkeley '61*
Alfred E. Maffly, *Cal-Berkeley '21*
James C. McAtee, *Ohio '65*
Russell J. McCaughan, *Florida '28*
Lorel W. Meyers, *Cal-Berkeley '29*
Phillip H. Miller, *Illinois '54*
Robert A. Miller, *Florida '49*
Clyde Nettleton, *Colorado '28*
John A. Olson,
Southern California '71

Solon F. O'Neal, Jr., *Florida '50*
Emanuel V. Orfanon,
Penn State '58
Richard G. Orr, *Case Western '47*
Harold H. Paul, *Miami '46*
Edward M. Paullin, *Colorado '24*
Paul E. Raymond, *Coe '23*
Stephen Russin, *Centre '48*
Fred W. Salogga, *Illinois '29*
Vernon H. Schill,
Baldwin-Wallace '45
Harold F. Scholz, *Iowa State '29*
Harold H. Short,
Colorado State '36
Thomas L. Stennis II,
Mississippi State '58
Gregory L. Thornton, *Colgate '65*
Warren G. Van Dorn,
Ohio State '43
Dr. Roger D. Vincent, *Miami '58*
William P. Vonder Haar, MD,
Louisville '51
Lewis A. Waddington, *Colorado '36*
Albert J. Watt, *Ohio '39*
James H. Weimer, *Kansas '50*
Willard W. Welborn,
Mississippi State '62
Robert E. Wheeler, *Centre '53*
Robert A. Whisner, *Miami '38*
James H. Withers,
Southern California '24
Homer O. Woodruff,
Southern California '30

Anniversary Gifts

Dr. Elliott L. Adams,
Cal-Berkeley '61

Robert D. Affolter,
Oregon State '46
John G. Anderson, *Colorado '28*

Marvin W. Bartels,
Bowling Green '51
James C. Berger, *Colorado '53*

Dr. Victor J. Bilotta, *Florida* '57
 Colonel Carl J. Browne, *Cornell* '36
 L. Wayne Cisney, Jr.,
Florida State '66
 Lewis M. Culver, *Colorado* '24
 Gerald Curington, *Florida* '69
 Jonathan Allen Fletcher,
Maryland '78
 Kenneth E. Frohardt,
Nebraska Wesleyan '37
 Roger W. Gilbert, *Cal-Berkeley* '50
 Michael L. Gilbreth,
Colorado State '65

Robert L. Hilligoss, *Purdue* '59
 John A. Johnson,
Mississippi State '64
 Jack H. Jones, *Indiana* '51
 Anthony J. Lombardo,
Kent State '64
 John F. Mankopf, *Coe* '65
 Bert E. Mansell, *Case Western* '36
 Robert M. Maynard, *Miami* '41
 Ronald Pennsyle,
North Carolina State '59
 Dr. James W. Ratcliff, *Ohio* '54
 Fon Rogers, II, *Transylvania* '71

Walter A. Schaefer, *New York* '31
 Harry R. Schroeter, Jr.,
Cal-Berkeley '32
 David M. Shiffman, *Bethany* '64
 Gary C. Smith, *Cornell* '60
 Spencer A. Stouffer,
Penn State '37
 Thomas L. Tatham, *Florida* '31
 Gregory L. Thornton, *Colgate* '65
 James M. White,
Mississippi State '27
 Paul M. White, *Muhlenberg* '24
 Harry V. Williams, *Pennsylvania* '27

Harvard Red & Gold Society

John A. Adamski, *Washington* '59
 Donald C. Alger,
Cal State-Fullerton '66
 Roger B. Austin, *Georgia* '75
 Michael J. Badalich, *Akron* '61
 Stanton F. Bahr, *Centre* '49
 Harold E. Barre, Jr., *Kentucky* '67
 William R. Battle, *Texas-El Paso* '41
 George W. Baughman,
Ohio State '19
 Larry L. Bertsch, *Miami* '57
 Lloyd C. Bost, Jr.,
North Carolina State '60
 Dr. Charles M. Brohm,
Louisville '57
 Harry M. Bowman,
Nebraska Wesleyan '36
 Hon. Charles W. Burke, *Florida* '48
 Howard J. Buchanan, *Michigan* '53
 John H. Clark,
Franklin & Marshall '59
 John F. Cosgrove, *Florida* '68
 John C. Cotton,
Rensselaer Tech '28
 Robert S. Culpepper,
New Mexico State '48
 D. R. Curtis, *Colorado* '33
 L. Gordon Davis, *Transylvania* '24
 Nathaniel E. Davis, *Bethany* '33
 Marvin T. Deane, *Akron* '45
 Marvin B. Dinsmore, *Auburn* '28
 Robert H. Duey, *Cal-Berkeley* '58
 Robert L. Eichel, *UCLA* '48
 John R. Evans, *Delaware* '55
 Ronald M. Fear,
Cal State-Chico '58
 William B. Ferguson,
Case Western '29
 Gary Fernwood, *Bowling Green* '52
 Raymond C. Ferranti, *Maryland* '69
 John R. Fischer, *Illinois* '22
 Brian W. Freeman,
Cal State-Chico '64
 David F. Fulton,
Oklahoma State '67
 Bruce R. Gibbs, *Syracuse* '52
 Gregory E. Gleis M.D.,
Louisville '71

Walter W. Griffin, *Auburn* '44
 John H. Griffith Ph.D., *Miami* '18
 Robert N. Griffith, *Purdue* '70
 Robert W. Hancock, *Delaware* '35
 Mack A. Hataway,
Mississippi State '61
 Howard E. Hawk, *Ohio State* '18
 Frederick F. Howard,
Michigan State '30
 Robert S. Howe, *Evansville* '68
 Philip C. Huber,
Baldwin-Wallace '68
 Tom D. Huecker, *Kansas State* '63
 Dan L. Huffer, *Ohio State* '57
 Elmer E. Huhn, *Lafayette* '34
 Robert L. Hume, *Auburn* '28
 Michael D. Jabara,
Michigan Tech '71
 Elmer L. Jackson, M.D.,
Bethany '24
 Morris B. Jobe, *Akron* '38
 Walter R. Johnsen,
Texas-El Paso '63
 William Arthur Johnson,
Cincinnati '76
 Douglas P. Kodak,
Bowling Green '62
 Robert J. Koepke, *Ohio* '48
 Karl Norman Krecke, *Michigan* '28
 Joseph M. Lichtenberg, *Ohio* '60
 Stanley A. Liszcz, *Syracuse* '30
 Robert Macinnes, *Georgia* '64
 James Walter Magruder, Jr.,
Miami '78
 Harry L. McClure, *Delaware* '26
 Horace E. McCready, Jr.,
Muhlenberg '47
 Thomas J. McWilliams, Jr.,
Colorado '66
 Duane G. Merrill,
Southern California '70
 Daniel A. Metzler,
Georgia Tech '69
 John W. Meyerhoff, *Colgate* '61
 Carlton J. Miller, Jr.,
Michigan State '65
 Donald Moses, *Michigan State* '44
 James A. Moutray,

New Mexico State '50
 Willard E. Munro,
Michigan State '41
 Chester A. Obma, *Wisconsin* '30
 Ronald L. O'Reilly,
Cal State-Long Beach '59
 Col. A. Victor Pena, *Texas-El Paso*
 '58
 C. Howard Pieper, *Texas* '48
 Howard W. Poxon, *Syracuse* '26
 John T. Pursley,
Southwest Texas State '68
 James M. Ramer,
Cal State-Fullerton '71
 Robert J. Ramsey, *Cal-Berkley* '21
 Matthew M. Raven,
Southwest Texas State '74
 Robert W. Reinicke, *Ohio State* '37
 William C. Rhodenbaugh, *Miami* '48
 Dale R. Richmond,
Case Western '67
 James B. Roberts, *Ohio* '48
 Paul H. Russell, *Penn State* '30
 Fred R. Sartin,
Southern Mississippi '65
 Walter A. Schaefer,
New York University '32
 Robert J. Shackleton, *Louisville* '55
 Philip T. Sherman, *Michigan* '24
 John R. Shotwell, *Miami* '43
 Dr. Blake W. Skrdla,
Nebraska Wesleyan '39
 Scott Allen Thomas, *Delaware* '78
 Donald L. Tipton, *Cal-Berkeley* '51
 Gordon M. Tushek,
Michigan Tech '66
 Beach Vasey,
Southern California '21
 Edward L. Warner, Jr.,
Michigan '28
 Stewart E. Warner,
Franklin & Marshall '21
 Cameron W. White, *Auburn* '42
 Ralph W. White, Jr., *Florida* '50
 Stephen Philip White,
Northern Michigan '67
 Jeffrey M. Willis, *Cincinnati* '65
 David D. Zinn, *Spring Hill* '67

Memorial Gifts

In Honor Of

Craig L. Bishop, Jr., *Illinois '50*
By Mrs. Craig L. Bishop, Jr.
Sammy R. Boswell, *Southwest Texas State '75*
By Matthew M. Raven, *Southwest Texas State '75*
Richard E. Burt, *Rensselaer '27*
By Winthrop Seelye, *Washington '29*
Claude W. Coates, *Lawrence '23*
By Mrs. Claude W. Coates
Lawrence J. Cramer, *R.I.T. '77*
By David L. Arlington, *R.I.T. '77*
Dr. S. Warren Cunningham, III, *Miami '48*
By Carl D. Vance, *Miami '67*
Leslie F. Denney, *Purdue '25*
By Mrs. Leslie F. Denney
John H. Dillon, *Wisconsin '28*
By Mrs. John H. Dillon

James L. Easter, *Miami '41*
By Robert H. Cook, *Miami '38*
Stanley G. Flack, *Pennsylvania '27*
By Mrs. Stanley G. Flack
Lou Gerding, *Colorado '24*
By Lewis M. Culver, *Colorado '24*
Harold T. Hanna, Jr., *Delaware '61*
By Mrs. Harold T. Hanna, Jr.
Leland Hurff, *Delaware '24*
By Howard C. Hurff, *Delaware '24*
Richard W. Kriever, *Bethany '75*
By David Cortes, *Bethany '75*
William N. McCoy, *Penn State '36*
By John E. McCoy, *Penn State '39*
Donald A. Pearce, *Cal-Berkeley '21*
By Caleb E. Ahnstedt, *Cal-Berkeley '21*

Peter T. Petzold, *Southwest Texas State '77*
By Wallace A. Howes, *Southwest Texas State '74*
Robert J. Ramsey, *Cal-Berkeley '21*
By Mrs. Robert J. Ramsey
James J. Spain, *Illinois '32*
By Thomas W. Bohmker, *Illinois '32*
John E. Swift, *Cornell '50*
By Mrs. John E. Swift
Howel W. Woodfin, *Texas '49*
By C. Howard Pieper, *Texas '48*
Deceased Members of Alpha Sigma
By Manford R. Murphy, *Colorado State '35*
Deceased Members of Gamma Nu
By Joseph J. Murphy, *R.I.T. '66*

Alpha
Miami University
Milton J. Altzner
J. Oliver Amos
William T. Amos
Nicholas J. Annes
George E. Bach
Richard Barcus
Eugene A. Beekley
Larry L. Bertsch
Donald E. Boyd
Fred Breitting
Serafin S. Buta
Perry C. Colburn
Robert H. Cook +
Norman A. Dohner
Richard A. Eberhardt
Dodd W. Fiori +
Kermith K. Fligor +
L. Dwight Franz
Charles P. Gerstenmaier
John H. Griffith +
Richard L. Hart +
Russell E. Hay
Brian R. Holbrook
Robert E. Jensen +
Carl A. Johnson
Rev. Calvin W. Klumb
Vincent F. Krist
Howard C. Larick
Dr. Stanley K. Laughlin +
William N. Liggett
Robert D. Lightner
William L. MacDonald
James Walter Magruder, Jr.
Robert J. Manning
Robert M. Maynard
Edward A. Moon +
Hugh C. Nichols
Robert H. Ousley
Dave J. Parker
Harold H. Paul
Kenneth S. Peterson
Charles H. Pidgeon
W. C. Rhodenbaugh
Judge Paul Sherer
Steven R. Shionsky +
John R. Shotwell +
Gene B. Smith
Colonel James E. Stanton
David H. Stauffer
C. Roger Stegmaier
Carl H. Steiss
Thomas D. Swebston
Charles W. Taylor, III
Dr. Robert T. Trippy
Carl D. Vance
Dr. Roger D. Vincent
Robert A. Whisner
Warnock Ted Wright

Kenneth Wayne Kangisser
Robert J. Koepke
Joseph M. Lichtenberg
Edward V. Lipman, Jr. +
Bruce H. Long +
George R. Lucas
James C. McAtee +
Col. M. L. McCreary
John R. Mears
Carl W. Puchstein
Dr. James W. Ratcliff
Joseph B. Roberts +
Thaddeus K. Soberay
William C. Summers
Jeffrey L. Terbeck
Albert J. Watt
William B. Weaver

Gamma
Ohio State University
George W. Baughman +
Donald A. Baur
Raymond A. Bichimer
Vincent P. Blair
Don W. Carr
Charles L. Copenhaver
Richard C. Cummings, D.D.S.
David M. Devore
Ernest E. Emswiler
J. Scott Fawcett
H. E. Hawk
Huffman R. Heisey
Dan L. Huffer
Ronald L. Kocher
Vincent A. Lauderman
Francis S. McDaniel
Larry A. Mottice +
John S. Nagy
Dale R. Pflaumer
Robert W. Reinicke
Philip J. Robertson +
William W. Shideler
Don S. Smith
Dr. Robert B. Smith
Harold L. Stelzer, Jr.
Thomas N. Turner
Warren G. Van Dorn
Robert V. Westlake
Harold L. Wilhelm, Jr.
Harold N. Wilson
John R. Workman

Delta
Centre College
Stanton F. Bahr +
Ewing T. Boles +
Raymond Cogar
Dr. Robert S. Fitch
Stephen Russin
Robert E. Wheeler

Epsilon
Mount Union College
Dr. George G. Cornish
Wilbur J. Dimit
Alfred G. Fetters
J. H. Hurst
Leland E. Moore +
Roberts A. Sargent, Jr.
Earl J. Schwab
Clifford D. Shields
Col. John H. Taylor
R. Blaine White +

Zeta
University of Illinois
Craig L. Bishop, Jr.
Frederick Theodore Blum
Thomas W. Bohmker
William S. Budd
John R. Fischer

Robert G. Fox
Robert B. Jordan
Frank A. Laraia
Harry Lash
Charles W. Main
Phillip H. Miller
Fred W. Salogga +
H. Kenneth Vanschoick
Herman W. Witt

Eta
Muhlenberg College
Jim H. Alderfer +
Kenneth I. Boyer
David B. Coover
Raymond L. Croft
Jeffrey C. Dannenberg
Joseph F. Hacker, III
Dale L. Hava
Leon R. Lewitsky, M.D.
Horace E. McCreedy, Jr. +
Thomas E. Miller
Mitchell G. Possinger
Kenneth E. Rittle
Daniel J. Schlegel
Charles E. Stites, Jr.
Paul M. White
Cmdr. Francis S. Yanoshik

Theta
Pennsylvania University
Caryl M. Britt
Timothy W. Collins
L. Gordon Davis +
John C. May
Ben F. Nelson
Fon Rogers, II

Iota
Coe College
Will C. Davis
Paul B. Clemens
John F. Mankopf
Paul E. Raymond +
John Kevin Roth

Kappa
University of Kentucky
John L. Anson
Harold E. Barre, Jr.
Arthur J. Bradshaw
Dr. Robert D. Hayes
Joseph W. Holton
John L. Mains, Jr.
Robert E. Maloney
Thom M. Sykes
Charles Walte, Jr.
Larry H. Westerfield

Lambda
Purdue University
Howard H. Burd
Donald R. Carter
Leslie F. Denney
David M. Eckman
Henri R. Evans
Robert N. Griffith
Fred J. Grumme
Oliver J. Heacock
Robert L. Hillgoss
Jeffrey Lee Jacob
Andrew K. Kolar
John H. Lienesch
Edward A. Lindsey
Paul A. Pankros
Roy J. Sykes +

Mu
Lawrence University
Claude W. Coates
David J. Fellman
Rev. Arthur B. Gaurke

Gilbert Hoffman
Dr. John S. Johnson
Lambert W. Peterson

Nu
California-Berkeley
Elliott L. Adams
Caleb E. Ahnstedt
Gregory Ryder Anderson
Rea A. Axline
Charles L. Badley +
Reginald E. Bayley +
James W. Black
Richard E. Doty
Robert H. Duey
Rev. William W. Eastburn
Ernest L. Esberg +
Roger W. Gilbert
John S. Hall
Richard W. Kite
Lloyd M. Langlie +
Robert G. Leetch, Jr.
Alfred E. Maffley
Lorel W. Meyers
Eugene B. Morosoli
John J. Muscardini
David H. Perkins
William L. Portello
Robert J. Ramsey
Steven M. Rea
Craig S. Robbins
Harry R. Schroeter
Charles M. Shaw +
Donald L. Tipton
L. N. Tyler
Raymond Vingo
Clay A. Ward

Xi
Franklin & Marshall
John D. Braught
John H. Clark
Ramon Coto
William P. Eddy
Francis A. Fote, Jr.
Joseph K. Groff
Joseph E. Hersch
Joseph J. Hock, III
Franklin D. Kortkamp
Charles A. Loyle
George M. Napuda
Dr. Nevin H. Rupp
Eli C. Schmidt, Jr.
Richard F. Shertzer
Michael R. Treister
Stewart E. Warner

Omicron
Penn State University
Duane M. Boydos +
Walter M. Brown +
Lester F. Delong
Christian K. Ebersole
Warren E. P. Hausman
Michael A. Manzo
John E. McCoy
C. Lester Mehring
Gerald David Micco
Emanuel W. Orfanon +
Paul H. Russell +
Spencer A. Stouffer
Jeffrey C. Turick
John W. Yaag +

Pi
Southern California
Donald R. D. Andree
Frederick T. Burrill
Louis C. Cramer
Capt. Wayne H. Crawford, Jr.
Robert B. Cyr

H. Phillip Dexheimer
Robert W. Dubbell
J. Howard Edgerton
Dr. Francis J. Flynn +
Ernest E. Harris +
Malcom Harris
J. Rey Hatfield
Wayne R. Hoffman Jr.
Arthur S. Huey
George C. Jordan
Charles R. Lande
Dr. William H. Lyon
Duane G. Merrill
John A. Olson
Kirk Rogers
Henry C. Rohr
Albert L. Stephens, Jr.
Hon. Clarke E. Stephens
Richard G. Sullivan
Beach Vasey +
Bill E. Williams
James H. Withers
Homer O. Woodruff
Neil M. Worthy

Rho
Rensselaer Poly Institute
George B. Achtmeyer
Donald C. Appelby
Richard E. Burt
Howard M. Cavanaugh
Rossa W. Cole
John C. Cotton
Cecil L. Crews
Anthony Michael DiMarco
Thomas L. Harding, Jr.
Peter J. Horn, Jr.
R. F. Kellis, Jr.
Harry W. Kuntzelmann +
Ezio V. Leonardi
Daniel F. Lillie, Jr.
Peter B. Martine
Lt. Douglas J. McVicar
John R. Ryan
Raymond T. Sterrett
John P. Stopen
Charles R. Stotz
Robert J. Thompson, Jr. +
Garth A. Weiss

Sigma
Syracuse University
Charles P. Albert
Col. Herman W. Fairbrother
William C. French, Jr.
Bruce R. Gibbs
Louis A. Godfrey +
Albert J. Henry
Stanley A. Liszcz +
George Perrault, Jr.
Howard W. Poxon
Dr. Bruce H. Smith, Jr.

Tau
University of Michigan
William C. Abendroth
Howard J. Buchanan +
Charles T. Esterl +
Hillary J. Everson
Robert J. Hutton
Gary S. Kocher
Karl Norman Krecke +
Roland R. Nette
James E. Peterson
William L. Powell
Philip T. Sherman
Edward L. Warner, Jr.
William S. Wells
Robert F. Winkle
Rex J. Youse

Upsilon
Nebraska Wesleyan University
Kevin J. Boatright
Harry M. Bowman
Ralph Bowmaster, Jr.
Eldon E. Chamberlin
V. Franklin Colton
S. Evan Davies
Marvin Feyerherm
Kenneth E. Frohardt
Donald M. Gentry
John M. Green
James M. Horrocks
Clair H. Johnson
Richard L. Kahle
Dan V. Kral
Jack K. Plummer
G. Thoburn Randall
W. R. Schlichtemeier, M.D.
Dr. Blake W. Skrdia
Gene Stewart
Terry E. Stewart
Steven J. Traut
Ward Welch

Phi
Bethany College
Dr. William J. Bannen, Jr.
David Cortes
Nathaniel E. Davies
Eimer L. Jackson, M.D.
Harry L. Mainzer
Richard J. Meess
John N. Minissale
David M. Shiffman

Chi
North Carolina State
Lloyd C. Bost, Jr.
J. Craig Honaman
Ronald Pennsyle

Psi
University of Colorado
John G. Anderson
Frederick J. Andrew
Michael H. Barrett
James C. Berger
Jerry J. Berger, Jr.
S. Crittenden, Jr.
Lewis M. Culver
D. R. Curtis
Dr. Andrew G. Finlay
William J. Fisk +
Bryce A. Frey
James W. Hart
Dr. Gerald M. Hickman
William E. Kuntz
James E. Kurtzman
C. D. Malchow
Thomas J. McWilliams, Jr.
Rolf F. Michelson
Patrick Micky
Clyde Nettleton
James F. Norling
Edward M. Paulin
R. L. Quinby
Scott David Schell
Howard M. Sheaff
Charles Steinger, III
Dr. Patrick L. Thompson +
Lewis A. Waddington
Thomas R. Wrighton

Omega
Wisconsin-Madison
John H. Dillon
Paul A. Eifers
Hugo E. Erickson
Gerald E. Hanson
Stafford O. Holle

Rodney D. Kittelsen
Chester A. Obama
Bruno A. Stein

Alpha Alpha
Michigan State University
Samuel J. Behringer, Jr.
Dale V. Cropsey
George A. Dow +
William G. Edwards
Frederick F. Howard
Donald E. Jankura
Carlton J. Miller, Jr.
Donald Moses +
Willard E. Munro
Carl O. Peets
Joseph M. Rizza, Jr.
Ross E. Roeder

Alpha Beta
New York University
William H. Angelbeck
Dr. Francis X. Buebendorf,
Jr.
Andrew F. Haiduck
Samuel B. Magill
Elmer F. Miller
Walter A. Schaefer +
Bernard Tallman

Alpha Gamma
University of Delaware
Ralph W. Beach
Weston H. Beale
Albert H. Dickinson
John R. Evans
William F. Funds
Robert W. Hancock
Harold T. Hanna, Jr.
Lee Roy Hanna, Jr.
L. George Henisee
Homer T. Hopkins
Donald C. Hornberg
Richard B. Howell, III
Howard C. Hurff
Ross M. Lanius, Jr.
Robert F. Loss, III
Alfred T. Lynam, Jr.
Henry P. Marshall, Jr.
Harry L. McClure
Samuel U. Phillips
John A. Salin
John M. Sloan
Scott Allen Thomas
Alfred D. Vincent

Alpha Delta
Case Western Reserve
William L. Aldrich
David Barshaw, Jr.
Roland O. Baum +
Hugh W. Black
William H. Campbell
William B. Ferguson
Drake C. Fink
Curtis L. Gordon
Robert D. Gott +
W. Allen Growden
Ralph R. Huston
Maj. William T. Jones, Jr.
J. R. Kinstler
Kermit D. Kuhl
Russell J. Lalut
John E. Leather
Stephen A. Legge
Tom E. Le Seuer, Jr.
Bert E. Mansell
William T. Mansfield
Elmer F. Miller
Harry R. Nara
Philip E. Orbanes
Richard G. Orr
Paul E. Plank
Dale R. Richmond
H. J. Rowe
Charles R. Snyder +
Gust Z. Stern
Joseph J. Sulc
Ireland L. Tashima
Edward J. Tatman
Walter E. Webb
Daniel L. Whipple

Alpha Epsilon
Kansas State University
Tom D. Huecker
Vern W. Johnson
O. Keith Lassen
Jeffery D. McKenzie
Carl O. Nelson
Jerry I. Simpson
Temple F. Winburn

Alpha Zeta
Oregon State University
Robert D. Affolter
Robert K. Fujimoto
Fred H. Hoyer +
Gerhard Hubbe
Carl W. Jacobson
Eugene W. Kower
Craig L. Larsen
George F. Payne
Donald M. Thomas

Alpha Eta
University of Florida
Barry E. Anderson +
Hubbard K. Biggs
Dr. Victor J. Bilotta

Robert P. Bishop
Judge Charles W. Burke +
Maurice C. Coleman
Warren W. Connor
John F. Cosgrove
Gerald Curington
Dr. Donald C. Daniel
Marshall C. Gallop, Jr.
George F. Gramling
Leroy H. Gross
A. Henry Hoche
Clifford A. Lyle
Russell J. McCaughan
Robert A. Miller
Erik C. Nutter
Solon F. O'Neal, Jr.
C. Reed Rollins
David J. Peseck +
Thomas L. Tatham
Ralph W. White, Jr.
Willard E. Wisler

Alpha Theta
College of William & Mary
Walter J. Bembenista
Dr. E. Thomas Boles, Jr.
Floyd S. Burd
Charles R. Butler
David D. Henrtze
Joseph B. Hornbarger
Roy E. Kyle
Thomas C. Owen
George W. Walter

Alpha Iota
University of Pennsylvania
Edward N. Adourian
John Baxter
W. A. Baxter
Carl E. Bohn
Dr. Matthew C. Catana
William F. Decker
Stanley G. Flack
David H. Harshaw
Edward C. Jaehniq
George E. Keefe
Thomas E. Manning
Cmdr. Kurt O. Runge +
Harry V. Williams

Alpha Kappa
Washington State University
David W. Amble
Michael E. Archer
Rocky Armfield
Ralph H. Campbell
Gerald E. Hart
Dennis J. Jacky
Major Fred A. Kennedy
Edwin A. Kilburn
William H. Munson
Michael B. Thomas

Alpha Lambda
Auburn University
Joseph B. Chandler
Marvin B. Dinsmore
Walter W. Griffin
R. L. Hume
M. Maurice McIntyre
James T. McMichael
Wallace C. Norman
Walter G. Strange, Jr.
Cameron W. White
Hiram C. Wilkinson
Lowell A. Womack

Alpha Mu
Ohio Wesleyan University
Harrison E. Bordner
Donald C. Snyder, M.D.

Alpha Nu
Iowa State University
Albert W. Bradbury
Alan H. Horst
George J. Knox
Harold F. Scholz
Everet Seward +
Major James E. Wieborg

Alpha Xi
West Virginia University
Leonard M. Board

Alpha Omicron
Lafayette College
Rev. G. Douglas Davies
Elmer E. Huhn +

Alpha Pi
University of Washington
John A. Adamski +
Ray F. Jones
J. D. Moore
Winthrop Seelye

Alpha Rho
Georgia Inst. Technology
Jeffrey W. Buckels
Harold E. Bufford
Col. Clarence B. Drennon
Thomas W. Donaldson
James B. Feldman +
Albert O. Fretwell
Allen B. Glover
Lorentz R. Hodges +
Gary A. Kimsey
Daniel A. Metzler +
Richard E. Rabe
Daniel Karr Weir

Alpha Sigma
Colorado State University
Charles M. Crutchfield
Michael L. Gilbreth
Dr. Elmer C. Hunter
Dr. Bing F. Johnson
Franklin F. Johnson
Jan A. Lommele
Manford R. Murphy
Philip W. Neal
Harold H. Short

Alpha Tau
Cornell University
Col. Carl J. Browne
Edward H. Carpenter
Dr. John P. Crosby
David Dodwell
William F. Eberle +
George M. Irey
James B. McArdle, Sr.
Thomas H. McNamee, Jr.
Roderick S. Meier
Bruce C. Orcutt
Richard K. Parsell +
Glenn A. Peterson
Joseph C. Roediger
Karl F. Schmidt
Gert H. Schmidt
Gary C. Smith
David L. Stephan
John E. Swift

Alpha Upsilon
Colgate University
Jack L. Anson +
Russell R. Billings
Dr. Edward T. Davis, Jr.
C. Rowan Debold
Vance A. Howe
John W. Meyerhoff +
J. B. Sherwood +
Gregory L. Thornton +

Alpha Phi
University of Akron
Philip J. Allison
William R. Bachman
Michael J. Badalich
John W. Blischak
William R. Bond
Enslin C. Brown
Jerrold K. Callen
Earl H. Davis
Margaret T. Deane
Gerald J. Glinsek
Donald L. Jenkins
Morris B. Jobe
Ray C. Kelly
Robert F. Leatherman
Patrick J. McArdle
Walter S. Stashkiw

Alpha Chi
Mississippi State University
Richard H. Beaudoin
Joseph D. Bristow +
Charles R. Gaston
Alan B. Hale
Mack A. Hataway +
William Preston Hinman
William S. Irby
John A. Johnson
Winston E. Jones
Thomas Bacon Majors, III
William E. Mays, Jr.
Arville O. Slaughter
Thomas L. Stennis, III
Willard W. Welborn +
James M. White

Alpha Psi
University of Texas-EI Paso
Glenn E. Baker
William R. Battle
Walter R. Johnson
Crawford S. Kerr, Jr.
William P. Kerr
J. Tom Melton
A. Victor Pena
Jim A. Yockey

Alpha Omega
Baldwin-Wallace College
Donald G. Allen
Dr. Daniel Arutt
Frank P. Benz, Jr.
Charles G. Bislich
Lawrence M. Daniels
Herman L. Garrett
Philip C. Huber
Ernest E. Jackson
Dale A. Kreke
Timothy W. Mast
Vernon H. Schill +
A. J. Werner, Jr.

Beta Alpha
University of Texas-Austin
John W. Anderson
Thomas M. Boyle
Fritz P. Kronberger
William T. McClelland
C. Howard Pieper
Victor R. Williams
E. V. Weaver

Beta Beta
University of Louisville
Dr. Ronald C. Almgren
David Keith Baughman
K. Lee Boylan, Jr.

William F. Brasch
Dr. Charles M. Brohm
Henry W. Daugherty, Jr.
Gregory E. Gleis, M.D.
Dr. Edward E. Landis, Jr.
Theodore L. Merhoff +
William L. Parks
Dr. Jerry A. Phelps
Grover C. Potts, Jr.
Donald B. Romans
Robert J. Shackleton
David Edwin Smith, M.D.
Joseph M. Thomas
Kevin S. Tucker
William P. Vonder Haar, MD
Michael E. Wagner
William H. Webb +
Paul D. Wilson

Beta Gamma
University of Idaho
Keith L. Gregory
Larry L. Lockner
Robert J. Nelson
Col. Richard L. Purdum

Beta Epsilon
University of Southern Mississippi
Ronald E. Balzi
Marshall Joseph Bynum
Milburn C. Cassidy, Jr.
William B. Edmondson, Jr.
Walter W. Koski
Richard L. Osswald, Jr.
Fred R. Sartin

Beta Zeta
New Mexico State University
Randy M. Chillion
Robert S. Culpepper
John D. Hammett
Burt Littlefield
James C. Manatt, Jr.
James A. Moutray

Beta Eta
University of New Mexico
Edward J. Sovek
Roger B. Vernon

Beta Theta
University of Kansas
Robert J. Cooper
Arthur O. McGowan, MD +
Dr. John N. Redwine
James H. Weimer

Beta Iota
Florida State University
William G. Albright
L. Wayne Cisney, Jr.
Edward L. Greenamyre +
David J. Pope
Ralph A. Richardson +
Hub Spooner, Jr.

Beta Kappa
Oklahoma State University
Terry L. Denning
David F. Fulton
Jay B. Goltra +
David Patton Imming
Myron D. Jenkins
Richard L. Kugler, Jr.
Virgil A. Richard
Gary L. Snyder +

Beta Lambda
Indiana University
Robert C. Coddington
J. T. Gardner
Thomas B. Gorin
Robert L. Grenerit +
Jack H. Jones
Joseph D. Lloyd
David P. Ober
Dr. John H. Porter
William L. Thornton +

Beta Mu
Kent State University
Charles E. Dougherty
Anthony J. Lombardo
Dale E. Rarick

Beta Xi
University of Georgia
Roger B. Austin
Joseph J. Harbison, II
Steve H. Huppert
Robert MacInnes
Kevan L. Sears
Col. R. Thompson, Jr.
Richard C. Young

Beta Omicron
University of Maryland
Reyburn E. Browning
Allan D. Etridge
John B. Fieser
Raymond C. Ferranti
Jonathan Allen Fletcher
Col. Nicholas A. Keck
Timothy O. Simon

Beta Pi
Middlebury College
Carey T. Smith +

Beta Rho
California-Los Angeles
Roger J. Bell, Ph.D.

Robert L. Eichel
George Moss

Beta Tau
Bowling Green State University
James G. Annos
James A. Baker
Lt. Col. Mark D. Barnhill
Marvin W. Bartels
Ray A. Clarke
Richard C. Curschman
Gary Fernwood
F. Frederick Fether
Richard Henningsen
William D. Jenkins
Thomas J. Kec
Douglas P. Kodak
Edward A. Leach
Joseph P. Rizzo
Paul W. Urian

Beta Upsilon
Hobart College
Joseph N. Anscher
Raymond D. Gage
Kenneth A. Kreinheder

Beta Phi
Westminster College
James N. Donaldson
David Lane
Will R. Maurer, II +
Jeffri A. Theys

Beta Chi
Southern Illinois University
Don Ballestro
John Ference
Michael O'Leary
Charles A. Presley
James A. Schlueter
Dr. Albert J. Shaffer

Beta Psi
California State-Long Beach
Eugene J. Bornga
Richard S. Drake
Ronald L. O'Reilly
James A. Reed
Jerry W. Ross
Jon D. Stocker
J. Luke Strockis
Ernest A. Villa

Beta Omicron
California State-Chico
Ronald M. Fear +
Brian W. Freeman
Ronald L. Johnson
Sean Patrick Moore

Gamma Alpha
Michigan Tech. University
Edward C. Borden, Jr.
Michael D. Jabara
Scott R. Labeau
Richard E. Nielsen
John N. Polakowski
Theodore Reiss
Daniel A. Taylor, Jr. +
Gordon M. Tushek

Gamma Beta
University of Cincinnati
Joseph A. Huseman
William Arthur Johnson
Frank E. Kos
Robert J. Kos
Jeffrey M. Willis

Gamma Gamma
St. John's University
Maj. Lawrence H. Pettit +

Gamma Delta
Northern Michigan University
Kurt H. Bouthin +
James G. Brown, Jr. +
James R. French
Michael S. Fried
Kenneth L. Hamlin
Steven Philip White

Gamma Epsilon
University of the Pacific
Christopher M. Bates
William J. Deubner
John L. Patton
Edward A. Schostag

Gamma Zeta
University of Connecticut
Warren N. Sargent, Jr.

Gamma Eta
East Carolina University
William Guy Lucas

Gamma Theta
Western Michigan University
Charles E. Darr
R. Bruce Rein
James Reisinger

Gamma Iota
California State-Sacramento
James A. Halderman
Robert W. Johnson
David M. Paganucci

Gamma Kappa
C. W. Post College
Nat J. Tartamella +

Gamma Lambda
Central Michigan University
George W. Francis, III
Michael A. Giordano +

Gamma Mu
Bradley University
Ryan P. Armbruster
William Patrick Kinsella +
Gary E. Smith
W. Wayne Wreath

Gamma Nu
Rochester Institute of Tech.
David L. Arlington
Matt D'Arienzo
Robert F. Broekhuizen
Gerald J. Kaiblein
Mark T. Misencik
Joseph J. Murphy
Melvyn P. Rinfrat
Robert A. Uzenoff

Gamma Omicron
California State-Fullerton
Donald C. Alger
Fred L. Arevalos
Edward A. Homola, Jr. +
James M. Keffler
James M. Ramer

Gamma Pi
Youngstown State University
David B. Carle
John F. Grzebleniak
Charles N. Foss

Gamma Rho
Kearney State College
Samuel E. Johnson
Lloyd L. Lipska
Joseph P. Moroski

Gamma Sigma
University of California-Davis
Anthony W. Montana

Gamma Tau
Old Dominion University
Nicholas Troisi, Jr.

Gamma Upsilon
Spring Hill College
Floyd J. Agnew, Jr.
Robert P. Cain, III
Kevin Joseph Corey
Jon A. Green
Joseph Jay McCann
Matthew Patrick Ryan
David D. Zinn

Gamma Phi
Northeastern University
Leonard J. Baker

Gamma Psi
Southwest Texas State University
Wallace A. Howes
John T. Pursley
Matthew M. Raven

Delta Iota
Iowa Wesleyan College
Ronald A. Parker

Delta Beta
University of Evansville
Robert C. Fornegs
Robert S. Howe
K. Steven Lilly
Alvin G. Roettger
Martin D. Ulrich

Delta Gamma
University of Mississippi
Peter J. Lauer
Charles L. Leemon, III
Daniel Whitten Miller

Delta Zeta
Emporia State
Mark R. Shaw +

Delta Eta
Marshall University
George R. Andrick

Delta Theta
Georgetown College
Dwayne L. Bernitt

Delta Kappa
University of Tennessee
Richard L. Hodgdon

Delta Lambda
Muskingum College
Paul N. Gard
Ronald L. Richwine
Steven L. Wentworth

Delta Mu
College of Santa Fe
Harry H. Greve, Jr.

Delta Nu
Wright State University
Capt. Thomas P. Clarkson, Jr.
Robert W. Hoepfner
Kenneth Jordan +

Delta Xi
Cleveland State University
James L. Missirlis

THE CHAPTERS REPORT

Another school year is over as the chapters report on philanthropic events, scholarship success and their plans for the fall.

AKRON—We here at Alpha Phi chapter just finished a great Greek Week. The Phi Taus won the "Slurp Off," Greek Olympics, the individual Greek Talent contest and finished second in the group competition. We also won second place in the Pizza Eating Contest. Last fall, we took first in the Greek Tug-of-War.

Our Greek Week event was the second annual "Bug Stuff." This year's "Stuff" again proved to be very successful. The Greek groups on campus had a great time trying to stuff as many bodies as they could into a Volkswagen Beetle.

This spring's associate class was the biggest in years, and includes some very promising leaders.

The associate members from Penn State (Omicron) visited us for a weekend in March, and all enjoyed their visit. This summer we're planning a schedule of events for ourselves and our alumni to keep that great Phi Tau spirit going while school is not in session.

Best of luck to all the chapters this year.

—Robert A. McCarty

BOWLING GREEN—As a result of losing 19 seniors to graduation this year, Beta Tau will begin the fall semester as one of the youngest, but still one of the strongest fraternities at BGSU. Continued strength in the areas of academics, campus involvement, community service and intramural athletics is looked upon as the foundation for a successful 1983-84.

A revamping of our scholarship and career development program resulted in rankings of third for our associates and tenth for the brothers among the 25 fraternities at Bowling Green in scholarship. On campus, brothers are serving terms on the resident student association and student court. Joe Gierlach, currently IFC cabinet member dealing with community service, has been placed in charge of the Homecoming parade and floats this fall.



Brothers of Alpha Gamma chapter (Delaware) raised more than \$3,800 in their "5-K for Bruce," race, donating the proceeds to Bruce Peisino, a high school student paralyzed in a football game.

Intramural athletics was once again another stronghold for the chapter. With a strong finish in track and field, Beta Tau took third in the all-sports competition. Our annual Basketball Marathon was once again quite successful. We raised more than \$1,000 for the Wood County Children's Resource Center. Our little sisters held a twister marathon, which also raised proceeds for the Center.

A summer rush party on July 3 and the National Convention on the Mississippi Gulf Coast are the highlights of our summer schedule.

Finally, we would like to congratulate two exceptional seniors for their outstanding contributions to the Fraternity and the campus at large. Sonny Peterman received IFC's Greek God Award for his accomplishments in the Greek System, and the chapter's Phi Tau of the Year Award for his achievements during his four years in the chapter. Bill Shaw, former chapter president, received the chapter's Senior of the Year Award. Congratulations to all of our graduating seniors. We'll see you at Homecoming.

—Peter N. Ruma

BRADLEY—The brothers of Gamma Mu chapter are proud to announce that after many years of planning and negotiation, we will finally be getting a brand new chapter house. The 44-man house will be built by Becker Brothers, Inc., of Peoria, Illinois. It is estimated that the house will cost in the neighborhood of \$300,000. Construction was scheduled to begin on May 16, 1983, 18 years to the day that the chapter was installed.

Much of the credit for getting the project

completed goes to alumnus Dr. Jim Davis, a member of the Gamma Mu Housing Corporation. Without him, the new house would still be a dream.

As a way of remembering the long-time home of the chapter, we will be saving a number of bricks from the old houses. We'll be sending the alumni more details on how you may obtain one of these mementos in the fall alumni newsletter.

Our annual Spring Alumni Weekend in early April turned out to be a great success, with alumni returning to Peoria from as far away as Texas and Virginia. We've already started making plans for our Fall Alumni Weekend, which is scheduled for October 1-2. The main event will be the dedication of Gamma Mu's new chapter house. This is sure to be our greatest Alumni Weekend ever!

After all of our achievements this past school year, we here at Gamma Mu have an exciting new spirit. With that new spirit and our new house, the coming year promises to be one of Gamma Mu's finest.

—Mike Loden

CAL-CHICO—Greetings from Beta Omega! This spring has provided us with a fitting end to a very successful year. We initiated ten new men, which brings our total for the year to 33 new men and 55 little sisters. The chapter is now anchored by a membership of 55 brothers.

With the advent of spring comes Pioneer Week, the event of the school year here at Cal State Chico. Mike Brown was elected as our sheriff, and our theme was Tarzan. The week was quite eventful, and set new stand-

ards for fun.

Newly elected officers include: Scott Vincent, president; Scott Jones, vice president; Greg Johaneson, treasurer; Rick Judd, recruitment chairman; and Tom Goelzer, social chairman. The nine Beta Omega brothers who will be attending this summer's National Convention are looking forward to a fun and constructive experience.

Finally, we've been busy making plans to improve our chapter house, and anticipate 25 new associate members in the fall. We wish all the chapters continued success in the fall.

—Scott Jones

CASE WESTERN RESERVE—Alpha Delta had an excellent 1983 spring. It began with the initiation of 14 new brothers, the product of a successful winter rush. Our membership is now 40, and we look forward to continuing our growth with the help of these spirited new brothers.

The chapter achieved a 2.98 GPA for the first semester, placing us fifth out of 18 fraternities on campus. A greatly improved financial stability has enabled us to begin some renovations in the chapter house. Our little sister program was reinstated during the fall, and has proved quite successful. Eight young ladies are currently little sisters, and we anticipate further growth in that program.

Greek Week was an exciting time, as usual. The chapter placed high in the competition, and everyone had a super couple of days. Other highlights of the year included community service at the Ronald McDonald House, a great car wash, road rally, canoe trip and the little sister's toga party.

The spring also saw the beginning of much improved alumni relations, as news of Alpha Delta's high academic achievement, spirit and sound financial status sparked the development of meetings between the alumni and undergraduate brothers. We look forward to developing our relationship further, as Alpha Delta strives to maintain its superior standing at CWRU.

—Pete Mackey

CENTRAL MICHIGAN—The brothers of Gamma Lambda extend greetings to brothers across the country. This winter semester has been a busy but triumphant time for the chapter. New chapter and alumni officers led the way. New chapter officers are: Denis Bouchard, president; Gary Derkacz, first vice president; Wayne Neck, second vice president; Mark Stefani, treasurer; and Craig Boulter, secretary. The new alumni officers are: Mike Giridino, president of the Housing Corporation and Rick Frey, chairman of the Board of Governors. The semester continued through rush, with Alumni Night the highlight, as alumni from near and far came to Mt. Pleasant to rush for Phi Tau.

Semester highlights include our victory in the Greek Week pool championship, the initiation of five new little sisters and our Spring Formal, held at alumnus Dan Reeves Cabin By the Shore. We also secured a new house closer to campus—all brothers are more than welcome to stop by for a visit. We also completed our semesterly philanthropic project, working with the Lions Club in a park reclamation effort. Our goals this semester are to attain the highest GPA of any Greek organization, and to place the most members on

the IFC honor roll. As you can tell, we've been hitting the books.

On campus, Wayne Neck is president of the Speech and Hearing Club, Denis Bouchard is a member of the Marketing Association and associate class president Rob Reader served as a delegate to the National Model United Nations.

As a final note, the brothers would like to express our deepest thanks and congratulations to Ross and Melinda Tison. Ross, our advisor, and his wife Melinda, a former little sister, have moved to the Detroit area to pursue their careers.

—Mark Stefani

CLEVELAND STATE—The brothers of Delta Xi are proud to announce that we have secured a chapter house! Located at 2422 Prospect Avenue near campus, the house is a historical city landmark. Built in 1863, it had a significant role during the Civil War, and was known as the "Governors Home" during that time.

New officers recently elected are: William Anderson, president; David Fero, vice president; Joseph Wissman, secretary; James Ingalls, treasurer; Mark Cerame, social chairman; and Emmett Benedum, recruitment chairman.

Brother Garry Klingbergs has been elected IFC President, and Greek Week was a smashing success under his authority. Scholarship was once again a strong point for Delta Xi, as our cumulative GPA of 3.0 placed us first among fraternities on campus.

Our social events continue to set new heights on campus. Some of those held this year include hayrides, sporting events, concerts, car rallies, road trips, dinners, and Daytona Beach during spring break. Chapter membership has been climbing steadily, and we expect our membership to rise to 45 men with the help of our new house.

Finally, special congratulations to Delta Xi alumnus Thomas Aldrich III, the new Erie Domain Director.

—Garry A. Klingbergs

DELAWARE—The 1982-83 school year has been a time of rebuilding, growth and change for Alpha Gamma. We realized early in the year that some key ingredients necessary for a strong brotherhood were missing. We lacked spirit, motivation, dedication, and most of all, the pride that should go along with being a Phi Tau. With a strong Executive Council behind him, our president, David Bolen, set out to change that situation. The areas that needed the most revitalization were: alumni relations, community and campus relations, communication with the National Headquarters, participation in Greek life at the University and intra-fraternal activities.

To improve alumni relations, we are now sending two newsletters per semester to all Alpha Gamma alumni. We plan to have many functions involving our alumni in coming semesters, starting with an alumni day in the fall. We are already receiving many letters from our Graduate Council brothers, and expect many more.

The event of the year came in the form of a five kilometer race for the benefit of Bruce Peisino, a high school student paralyzed in a football game. The "5-K for Bruce," as it was called, was scheduled for March, with an ex-

pected entry number of 300, and an anticipated \$1,500 for the cause. The results were quite impressive. We had more than 700 entrants, and raised more than \$3,800. The "5-K for Bruce" ended up being the second largest race in the state of Delaware.

This tremendous success helped motivate the brothers—many of our problems seemed quite conquerable, and we took charge of our situation. As a result, we won the most improved GPA award among all Greek organizations on campus. We also won a community service award. We were very successful in a wide variety of intramural sports, winning three championships. In one year, Phi Kappa Tau has become one of the leaders among the fraternities on campus and is well respected by the University administration.

If there is one thing we've learned this year, it is that you can accomplish almost anything you set out to do with a little dedication and spirit. We at Alpha Gamma are a strong chapter of Phi Kappa Tau—we wish the best of luck to all the chapters. Believe us, you can do it!

—Bill Borkovitz

EAST CAROLINA—The spring semester here at Gamma Eta has been quite successful in all areas. Executive Director John Meyerhoff, National President John Green and Domain Director Dave Rabb all visited the chapter early in the semester. They provided some excellent ideas for the chapter.

As we have done for the past three years, Gamma Eta dominated in intramural basketball. Social functions were also quite successful. Some of them included socials with Alpha Delta Pi and Alpha Xi Delta, Friday afternoon volleyball games and a champagne breakfast.

We raised money for Cerebral Palsy this spring, and a few of us presented a check on television during the "Weekend With the Stars Telethon." We've also obtained and installed 3 by 4 foot Phi Kappa Tau letters at each end of the house.

—Robert Rucks

EAST CENTRAL—The brothers of Gamma Xi have again completed a most productive spring semester. We finished the year in good fashion by being chosen Most Active Among Fraternities on campus, and again winning the scholarship award for the 16th time in the last 17 years.

Our summer meeting will be held on July 9, when several brothers will be making final preparations to attend the National Convention in August. Our meeting will be followed by our summer rush party, launching another successful rush campaign for the chapter.

Special congratulations to this year's graduating seniors. These men have made many contributions over the years, and their services will be missed. Congratulations also to brother Geoff Clifton, who will spend this summer in Florida as part of Walt Disney's All-American College Band.

We wish everyone the best of luck with rush next fall, and we'll see many of you on the Mississippi Gulf Coast this summer.

—Mark Prentice

EASTERN KENTUCKY—Fall rush gave us 15 outstanding young men who worked hard throughout the semester. The chapter was involved in many activities throughout the fall, including the Delta Zeta Frat Man Con-

test and the Sigma Alpha Epsilon County Fair. Our annual brother-associate football game found the associates victorious, 21-14.

Spring started in fine fashion, as 8 men were associated during rush. Several fund raisers resulted in an \$800 contribution to Cardinal Hill Children's Hospital in Lexington. We also took first place honors in the Phi Delta Theta Softball Tournament.

Our Formal was held at King's Island in Cincinnati, Ohio, and turned out to be quite an outstanding event. We closed out the year with a scramble golf tournament sponsored by the associates. See you at Convention in August.

—J. Eric Brandenburg

EVANSVILLE—Greetings from Delta Beta! This past spring wrapped up one of the busiest and most successful years the brothers of Delta Beta have seen in a long time.

We kicked off spring quarter with our annual Parents Weekend, and a good number of Phi Tau Moms and Dads were in attendance. That same weekend, we teamed up with the women of Phi Mu and presented our "Musical Madness" skit, earning a respectable place in the contest.

We held our second annual Career Day in late March. Speakers from various professions were in attendance to pass on information on their careers to the brothers. We are looking forward to our next Career Day, to be held sometime in the spring of 1985.

In April, we initiated a number of the members of the UT-Martin Colony into the brotherhood. We considered it a privilege to be asked to perform the initiation for them, and we wish them the best of luck in their efforts toward installation as a chapter. The annual Phi Tau Derby, our philanthropic project that benefits the American Cancer Society, was also held in April. This year, we set an all-time record by raising \$8,121.95. Special thanks to all those who helped make this possible. Not only did the Derby set an all-time chapter fund-raising record, but the effort broke all campus records for the most money raised by a student organization.

We held our 15th Anniversary Formal on April 30 at the Executive Inn here in Evansville. National Vice President Ray Bichimer

was the main speaker for the evening. Also in attendance from the National Headquarters were Tim Collins, Steve Lilly and Luke Strockis. Thanks to all, but especially Mr. Bichimer, for making our formal a success!

—Stephen C. Baker

FLORIDA—Alpha Eta enjoyed a very successful spring semester highlighted by our annual Founders' Day and Barbarian Weekend. We were also honored to host Phi Taus from other chapters in the state at the Sunshine Domain Conference, which we hope can become an annual event.

We're already looking forward to a busy fall semester, beginning with an intensive two weeks of rush. Prospects look good—we learned a great deal last fall when we more than doubled the size of the chapter.

Our recent success in recruitment is due mainly to our new system of "indexing" all the rushees that visit the house. By keeping vital information (hometown, major, hobbies, interests, etc.) about each rushee, we can easily refer to that information should that rushee return to the chapter house. It allows us to get to know prospective members a lot better in a short period of time. Our recruitment has also benefited from an extensive advertising campaign including frequent radio spots on one of the local Gainesville radio stations.

Even though most of our fall recruiting does take place during those first two weeks of school, it doesn't start then. We take pride in our strong summer recruitment program. This summer, we plan on contacting a good portion of the over 3,000 incoming male freshmen at our summer recruitment parties to be held all over the state.

We look forward to meeting many of you at the National Convention this summer on the Mississippi Gulf Coast.

—William B. Brockman

GEORGETOWN—This has been another outstanding year for Delta Theta. The most noteworthy accomplishment of the year was our winning the National Award for Greatest Scholastic Average. The award was presented on March 5 by Dr. Monroe Moosnick, National Educational Director. This coveted award has greatly enriched our

pride, and the very impressive trophy holds a prominent place in our trophy case.

The chapter grew by four men after spring rush, bringing total chapter membership to 48 brothers strong. Fall rush prospects look outstanding, with the possibility of a record associate class.

Congratulations to little sister Jill Sparrow, a member of Kappa Delta Sorority, who is one of the finalists in the Phi Kappa Tau National Dream Girl Contest. Kudos also to the seven brothers who are starting members of the Georgetown College baseball team. They combined their talents to make Georgetown one of the finalists in our conference.

Finally, graduation was a memorable occasion for the 17 Delta Theta seniors. Three brothers have been accepted to various medical schools, one to dental school, and four others have taken executive positions with various corporations. Brother Lee Cox received the most prestigious award of the day, the Dean's Academic Excellence Award.

—Dennis R. Chaney

GEORGIA—Beta Xi once again opened up the quarter with a bang and proceeded to have the best spring quarter in recent history. At the start of the quarter, our own Gavin Bell was elected executive vice president of the Interfraternity Council, continuing our tradition of having strong representation on the IFC. Our chapter elections found the following new officers: Bill Crane, president (for the second year in a row); Gavin Bell, vice president; James Segro, treasurer; Bruce Beckwith, secretary; Steven Roy, corresponding secretary; and Alan Cleveland, recruitment chairman.

For the second year in a row, we put together an outstanding philanthropic and social project, "Soap 'n Suds '83." The event started with a car wash competition between the sororities on campus, with close to 1,000 cars washed by more than 300 beautiful Georgia sorority women. The car wash was capped off by a "Miss Scrubbin' Bubbles" competition. That night, more than 6,500 students showed up to enjoy a party that featured two bands, headlined by the nationally acclaimed recording artists, "The Producers." The entire event enabled us to raise several thousand dollars for United Cerebral Palsy and the Old Athens Cemetery Foundation.

After an outstanding job as sweetheart, Rhonda Hickson has given up her crown to our Pamela Prater. Pam is one of the finalists in the Phi Kappa Tau National Dream Girl Contest.

Greek Week festivities were capped off by a Mr. Greek Week competition which saw four Phi Taus represented, two of whom finished in the top ten, and one in the top five. As the quarter came to a close, our annual Red Carnation Banquet was held in Atlanta, with many alumni in attendance. The very next weekend was our annual Red Tan, Golden Sand Beach Weekend in Panama City, Florida.

It's been a very productive year for us, and we plan on continuing that trend in the fall. From the Bad Boys on Milledge, good luck, take care over the summer, and we'll be looking forward to hearing from everyone in the fall.

—Bruce Beckwith



Alumni at Nu chapter's (Cal-Berkeley) Founders' Day. From left, Reed Anderson, president of the Nu Alumni Association; Alvin Maffly, one of the chapter founders, recipient of an award for continuous service, and donor of \$1,000 to the Nu Educational Foundation in memory of Donald A. Pearce; and National President John Green.



Beta Xi chapter (Georgia) brothers at their 2nd Annual Soap 'n Suds philanthropic project, which benefitted United Cerebral Palsy and the Old Athens Cemetery Foundation.

IDAHO—Beta Gamma had a prosperous and enjoyable spring semester. We started off in fine fashion by initiating seven new brothers—we're proud of their achievements. Our new officers are doing a great job helping the chapter maintain this success.

Our social activities have been a success too. Little sister rush was a fun and busy time, and we pledged 17 wonderful girls into the program. We've enjoyed many activities with them from roller skating to picnics, making the semester that much more enjoyable. We're all looking forward to the fall and a great rush. Good luck to all the chapters.

—Richard Kross

ILLINOIS—Another year has flown by at Zeta, and it already seems like a distant memory. With brothers spread out across the country enjoying their summer break, we're really only left with our memories of the year's accomplishments and setbacks. Luckily, it was a year with a number of good things to look back on and be proud of: 20 outstanding young men were initiated into the brotherhood, and 13 more associate members for this fall; over 20 seniors graduated and moved on to make their mark in the professional world after building a strong foundation here; there were numerous successes on the athletic field; brothers continue to excel in academics and hold positions of authority on campus; and, most importantly, there was the fun in simple, everyday activities stemming from the atmosphere of brotherhood which pervades the chapter.

This is not to say, however, that we lose track of one another over the summer. There will be several parties thrown throughout the summer for all the brothers and their friends, highlighted by Greek Reunion Weekend on campus and "Lubes Fest '83" in South Barrington. In addition, Zeta will have a strong contingent present for the National Convention in August down on the Gulf. Hopefully, there will be a large turnout, not only so we can meet brothers from as many chapters as possible, but because we have a little something to present to show how much pride we have in Phi Kappa Tau and our genuine desire to keep the Fraternity as a whole im-

proving. I hope everyone has a super summer. We'll see you in Mississippi.

—Dan Colbert

INDIANA—Beta Lambda continues to emphasize recruitment as the most important activity for the chapter. Recruitment chairman Tim Abril has designed and implemented a summer recruitment program which has proven quite successful thus far.

We are also pleased that we have made significant progress in getting alumni involved in chapter activities. Part of this success is due to the efforts of alumni relations director Glenn Mehringer, who has put out several alumni newsletters, keeping alumni aware of our activities, and outlining areas where they can be involved. We have received a very positive response from our alumni, and we urge those of you who have not written to take the time to do so.

The "World's Greatest College Weekend" turned out very well for Beta Lambda, and while we weren't able to qualify for the Little 500 race, our spirits were still high. We had several alumni join us for Beta Lambda's fourth annual Little 500 Pig Roast, and all had a great time.

A reminder to Beta Lambda alumni, Indiana's homecoming will be held on October 15 this year, and we urge you to join us for the football game and the other activities scheduled for the weekend.

—John Emerson

IOWA STATE—The brothers of Alpha Nu have just completed one of our best years yet. We're alive and well and looking forward to an even better year next year. We let the rest of the campus know that we're back through our participation in Ash Bash during Veisha, which enjoyed the participation of over 2,000 people.

It looks as if the remodeling we've long desired is finally coming to our home at 307 Ash Avenue. A two-phase plan has been adopted that will increase our marketability and house capacity over the next two years.

To back up our remodeling plans, we have been hard at work in two different areas. First, we've brought a renewed spirit to our recruitment program. We started summer rush two months earlier than we have in

years. Prior to June we already had three freshman who had asked to join, but bids can't go out until after June 1, so prospects look good for an outstanding summer and fall rush.

The other big effort has been with our alumni fund raising drive. We are still at \$10,000 pledged, with another big campaign scheduled for the summer.

Jerry Lineweaver has been hard at work on our chapter archives to document the history of Alpha Nu. If you have anything of historical significance, please let us know about it. Any help on this project would be greatly appreciated.

Finally, big plans are in the making for a large Alumni Association meeting this fall during Homecoming. We are hoping for record attendance this year, so plan to be there on October 15, for a pre-game meeting and fire up!

—Jay Kim

KANSAS STATE—Alpha Epsilon's organization on both the Resident and Graduate Council levels has led to many successes this year for the chapter. We were very proud to be named one of the winners of the Hap Angelo Award, given annually for chapter improvement. This award reflected the hard work and dedication that the chapter membership has displayed. Certain individuals in the chapter have also achieved great success during the year. Craig Danforth received a Presidential Citation for his efforts with the summer rush campaign, and Eric Hummel was elected student body senator from the department of engineering.

The chapter has also made great strides in other areas. After painting the house and completing other renovations earlier this year, we improved our living environment. Our enthusiasm is also on the rebound, and we have developed an excellent reputation on campus. This is evidenced by the sorority functions we have planned for the fall with Chi Omega, Delta Delta Delta and Kappa Kappa Gamma. Our alumni have also given us good support, as the response from the last issue of "PaKeT" was very good.

Finally, we are looking forward to the National Convention this summer, and plan on having a good contingent present. We are also anxiously awaiting the start of the 1983-84 school year, a very promising year for Alpha Epsilon.

KENTUCKY—Under the leadership of new president Seth Hall, the brothers of Kappa chapter have enjoyed an eventful spring semester. In spring intramurals, Kappa placed third in soccer and fared well in softball and basketball.

Our major fund raiser of the year, the "Mattress Marathon," under the direction of Rod Neumann, was a huge success. It lasted five days around the clock with the brothers collecting pledges and then pulling a bed around a local mall. The proceeds will go to a worthy charity. Spring formal was enjoyed by all, and Clay Campbell was named as the outstanding brother.

Chapter by-laws were drawn up and adopted during the semester, providing the internal organization and discipline that will allow us to further the ideals of the fraternity.

We presently have eleven associate members awaiting Merit Week in August. Fall semester will see the first-ever "dry rush" at

UK. We voted in favor of dry rush with the idea that it would promote scholarship, brotherhood and community relations.

Finally, we look forward to an outstanding year, and would like to invite all Kappa alumni by for a visit.

—Paul Conway

LOUISVILLE—The brothers of Beta Beta have completed yet another successful year. Through our outstanding record in intramurals, community service and campus involvement, Beta Beta has once again shown itself to be the best of U of L's fraternities.

In intramurals, we exhibited our prowess on the athletic field with victories in a wide variety of sports. We won the swim meet, the track and field meet and were champions in both the regular season and tournament in softball. We also finished the season undefeated in both soccer and basketball. The chapter recorded second place finishes in volleyball, tug-of-war, canoe regatta and horseshoe doubles.

Beta Beta's community service activities included the first annual Phi Kappa Tau "Run for Fun," with the proceeds going to the American Cancer Society. We helped to promote and advertise the annual WKPC-TV auction and also provided workers for Health Focus '83, which was a tremendous success.

A highlight of the year was the celebration of our 35th Anniversary at the Seelbach Hotel's Crystal Ballroom. Well over 300 were in attendance. We were also hosts to brothers from at least six chapters during the Kentucky Derby. We would like to see even more chapters represented next year at the Derby.

On campus, D. J. Wroble served his term as IFC president and was selected Greek Man of the Year; Randy Stastny was chosen as Mr. Cardinal, an honor give to the University's outstanding graduating senior; Mike McDonald was elected president of the business school and appointed chairman of university student activities. Also, Bruce Anderson, Dave Carter and Bob Gillespie were elected to the arts and sciences student council and Dee Downs, Bob Gillespie, Glenn Graham, Steve O'Conner, Jim Rakutt, Tom Sherman and D. J. Wroble were selected as seven of the University of Louisville's eleven "Cardinal Men."

Elections found the following in leadership positions: Dwayne Mosier, president; Glenn Graham, executive vice president; Dave Brutscher, membership vice president; Bill Wohlgenuth, treasurer; Bruce Anderson, secretary; Tom Sherman, social chairman; and Mike Cuneo, house manager.

Looking back, this has indeed been a successful year for Beta Beta. We are indeed going far!

—Bruce Anderson

MIAMI—The brothers of Alpha have enjoyed a fantastic spring semester. We are proud to have 20 newly initiated members and three associate members. We were also pleased to have Malcolm Forbes, chairman and editor-in-chief of *Forbes Magazine* as a guest of the chapter after Miami's Commencement and an honorary initiate of the Fraternity.

The semester began with several changes, including the retirement of our long-time

housemother, Marian "Mom" Rhodes. With the aid of our new cook, we continued to entertain special dinner guests, including important Miami officials and Phi Tau alumni.

Later in the semester, our annual Basketball Marathon was once again quite successful, raising almost \$2,000 for the Oxford United Way. Alpha also excelled in spring intramurals, especially in soccer and softball. Jack Anson was the keynote speaker at our Founders' Day Banquet which also honored our graduating seniors. Executive Director John Meyerhoff also presented our Maxwell Award at the banquet.

Individually, the brothers of Alpha continue to be leaders in campus organizations, and we maintain good rapport with the entire Greek community. With increased efforts to renew our alumni support and involvement, we are really looking forward to Homecoming weekend on October 8, and we encourage all alumni to stop by and visit when they are in the Oxford area.

—Ken Grupe

MICHIGAN TECH—Gamma Alpha is in quite solid condition at the present time. With the addition of our spring associate class, chapter membership will number at the 40-man mark, the largest it has been in the last four years. Special thanks to Pat Tucker for helping us out this year. A retreat planned for early fall should help a great deal in identifying weak points and formulating goals and objectives for the coming year. Internal communications and alumni programming will be major topics for discussion at the retreat.

A new chapter committee, the charity committee, has been established in an effort to increase our campus involvement. A pancake breakfast, the first project taken on by the committee, was a flipping success. More than 320 people were served and a \$500 donation was made to the Michigan Tech Fund to benefit the Arts and Humanities Center. Guests included Dean Meese and Ron Helman, Executive Director of the Michigan Tech Fund.

Congratulations to Joel Scott and Pete Tropper, the winners of this year's Mikeal Engleright Brother of the Year Award. Alumnus Wally Binder, a good friend of this departed brother, was in attendance to make the presentation. Other alumni who found their way up to the "Copper Country" to share this special weekend were Jeff Clark, John Vine, Al Sipinen, Dan Burke, Joe Fojtik, Mike Dustin, Les Lieneath and Mark Youngren. Thanks guys, we enjoy and appreciate the support, and sorry if I missed anyone.

Overall, brotherhood and spirits are high, and we look forward to an outstanding year.

—Steve Bailo

MOUNT UNION—Spring quarter has been quite busy at Epsilon. Many changes have taken place at the chapter, including the election of three new officers: Rick Marabito, president; George Crim, vice president; and Slater Raub, treasurer. We are also pleased that brother Glen Jeter was elected as IFC president.

The appearance of the house has even changed this past term. Our new carpeting finally arrived, and looks great. The front foyer, steps and hallways have all been carpeted. Special thanks to our alumni for their help with this project.

Our biggest achievement this term, however, would have to be our victory in Greek Week. Winning this event for the first time in many years has had a great affect on the chapter's attitude, and has brought the brothers closer together.

We are looking forward to turning this year-ending enthusiasm into a productive summer and promising fall semester.

—Slater Raub

MUHLENBERG—Eta was extremely pleased to host Executive Director John Meyerhoff at our annual Founders' Day festivities. He presented the chapter with our Maxwell Award and the Phi Award to distinguished chapter alumnus Robert Butz. Our annual Parents Day and Spring Weekend were also quite successful this year.

On campus, Nick Leno was elected chief justice on student court, Mike Bailey is a student council representative, Andy Strober was appointed head of the student orientation committee and four brothers were chosen as resident advisors for the coming year.

In the community, Eta supplied marshalls for the Lehigh Valley Cystic Fibrosis Bike-athon and participated in the Miller Memorial Blood Drive. We also continued our support of the Lehigh Valley Big Brother Program, with ten brothers involved in the program.

For the second straight year, Eta captured the campus sports trophy by winning seven out of nine intramural titles. In intercollegiate athletics, Fred Stoyer was crowned MAC wrestling champion in the 134 pound class and made a strong showing at the national championships in Indiana. Gary Greb, Glenn Cocchiola, Mark Majewski and Vic Tritto all played key roles on the Mule baseball squad. Cager Dirk Oceanak was chosen as MVP in two holiday basketball tournaments, Brad Erlenbach was captain of the track team for the second straight year and Mike Bailey set school records in the 100 and 200 yard dash.

Special congratulations to the following graduates: Vic Lea, summa cum laude; Bob Green and Brain Ortelere, magna cum laude; and Glenn Cocchiola and Mark Majewski, cum laude.

With great pride, respect and unity, Eta looks forward to an even greater 70th year beginning in the fall.

—Mark Bisbing

MURRAY STATE—The brothers of Delta Pi recently celebrated the first anniversary of our installation as a chapter of Phi Kappa Tau. In this short period of time, we have become an influential part of the Greek system and University as a whole. This was demonstrated by the large number of brothers who provided their time and efforts to the production of the Miss M.S.U. Beauty Pageant. We also helped by answering phones during the university radio telethon, the major fund raiser for their fine programs. Social events included a '50s party, toga party, sorority mixer and a great spring formal in Jackson, Tennessee.

It was with the much appreciated help of Tim Collins, director of publications, that we added ten new men to our brotherhood during winter rush. Four brothers, two of whom were founding fathers of Delta Pi, completed their college careers this spring and went on to put their fraternity experience to good use in their careers. Their contributions have



Participants from Delta Kappa chapter (Tennessee) in the Miller High Life Team Olympics.

been outstanding—we can't thank them enough.

We look forward to continued growth in the coming year with the highest grade point average for the 1982 year, ten new brothers, a "dream girl" little sister and the help of Domain Director Joe Joiner. We have faith in what Phi Kappa Tau stands for and we are hopeful that many other men will seek to attain those ideals and experiences with us.

—Jim Peck

MUSKINGUM—Thanks to contributions from our alumni, the most noticeable changes for Delta Lambda this year are seen in the house. We now proudly display our letters above the entrance, new curtains hang in our living and dining rooms and a new washer has made life much more bearable.

Earlier in the year, we proved our athletic ability at the All-Ohio Phi Kappa Tau Basketball Tournament sponsored by Gamma chapter at Ohio State University. Along with the "thrill of victory," the brothers enjoyed the chance to meet other Phi Taus and take in the excitement of the High Street area in Columbus.

We sponsored several all-campus parties this year, but none equaled the party we had with the brothers from Beta Phi at Westminster College. They journeyed from New Wilmington, Pennsylvania to New Concord, Ohio, for the event, and neither group will soon forget the experience.

In the upcoming year, our goals are to become more financially secure with the help of our Board of Governors. As always, we welcome visits from alumni and other chapters here at Muskingum.

—John Ellwood

NEBRASKA WESLEYAN—The highlight of the spring at Upsilon was Founders' Day, held on March 19 with National President John Green as the featured speaker. After the dinner and program, we had a gathering at the chapter house that brought undergraduates and alumni together in an interactive atmosphere. Founders' day seems to be getting stronger every year, as well as more fun.

Our major philanthropic activity consisted of taking a group of orphans out for an afternoon at the park. A good time was had by all

playing softball and frisbee. Once again, the McKibben Scholarship Trophy was awarded to the chapter. This year, our overall GPA was 3.106 on a 4.00 scale. The McKibben has gone to Phi Kappa Tau for so many years now that we have lost track of exactly how many times we've won it.

Our annual Sweetheart Formal was a thoroughly enjoyable experience again this year. Mary Wright was crowned sweetheart, as the brothers sang the sweetheart song. Our tradition of a black tie formal also remains alive.

Finally, we're looking forward to the National Convention in August, and the start of a new school year.

—Vic Weber

NEW MEXICO STATE—This spring, the men of Beta Zeta participated in New Mexico State's first formal fraternity rush program, which was conceived and implemented by brother Ronnie Romero, the current IFC president. It was quite a success, and proved that quality men can be pledged without the use of alcohol.

Our annual spring river party, the "Regatta," was, as usual, a huge success. The entire fraternity is looking forward to returning this fall to a new house. The University is planning to spend about \$50,000 on repairs. It should look fantastic for this fall's formal rush. All in all, Beta Zeta had a good spring, and we're looking forward to an even better fall semester.

—Brett Bentley

OHIO—Greetings to all alumni and undergraduate brothers from Beta, the chapter nestled in the foothills of southeastern Ohio. It's been a productive and enjoyable winter and spring here in Athens. We teamed up with the women of Chi Omega for our annual Dance Marathon for Muscular Dystrophy, raised \$3,000, and had a good time in the process.

Mark Gresko, from the Cal State—Sacramento colony was a special visitor this past quarter, and we really enjoyed having him as our guest. On the intramural field, we didn't win a championship in football or baseball, but we made the playoffs in both, and plan to do even better next year.

Socially, we had a four-way exchange with

Pi Beta Phi, Phi Mu and Lambda Chi Alpha. We also held our third annual secret invitation Crush Party. Formal weekend went very well as the brothers and their dates enjoyed the Hocking Hills State Park. Michelle Siwarka was named our new Dream Girl. We also had Warrior Weekend at Burr Oak State Park, and roasted four brothers who will not be returning in the fall. Bill Albers, Mark Sheehy and Dave Stevens graduated this spring and Bob Monkman is transferring to a school closer to home.

Our revised scholarship program has inspired many of us, and we're looking forward to a great GPA this quarter. Dave Stevens was awarded a Margaret Deppen Award for Outstanding Greek leadership.

The chapter was saddened in early June when Marian Earnhart, the mother of brother Lee Earnhart, passed away. She was a kind woman who always had an open ear and a good humor. Our sympathy to Lee and his family; she will be missed.

We are happy to announce that Mary "Mom" Evans, our housemother for 14 years, is returning next year to keep her boys out of trouble. Our alumni newsletter, "Warriors Report," has been revitalized and the response has been overwhelming.

We hope the summer treats all of you well, and look forward to seeing you at Convention. There's always an open door here in Athens for any brothers passing through the area.

—Mike "Doc" Reiss

OHIO STATE—The men of Gamma have succeeded in wrapping up another excellent year here at Ohio State.

Winter quarter brought the third annual Phi Tau Basketball Tournament, expanded this year to include some chapters from outside of Ohio. The men of Delta Lambda (Muskingum) took top honors, while Beta Tau (Bowling Green) and Gamma (Ohio State) finished second and third, respectively. More than 200 brothers were in attendance, representing 10 chapters from Ohio and Kentucky.

New officers include: Craig Little, president; Al Stevenson, vice president; Tony Mullins, secretary; Jeff Boerger, treasurer; Randy Vocke, membership orientation; Brad Williams, recruitment chairman; Rich Gould, social chairman; and Chip Moore, philanthropy chairman. We are also well represented on IFC, as John Redmond was elected rush coordinator. Selected as rush counselors for formal rush were Todd Brogan, Rich Gould and Rich Skidmore.

With spring quarter came Greek Week, and we were paired this year with the women of Alpha Phi. We took sixth place in the combined Greek Sing competition, third place in tug-of-war and second in beer chug. The variety show was videotaped by the Qube Network here in Columbus, and featured Phi Taus Craig Little, Rich Gould, Dan Rose, Mike Sweeney, Tony Mullins and Pearson Buell.

Academically, the chapter has continued to improve, and currently ranks thirteenth out of 36 fraternities. Craig Little was presented his second Buckeye Award, a prestigious honor recognizing outstanding student leadership. Maura Moore, of Alpha Xi Delta, was selected as our 1983 Dream Girl. We love you, Maura!

Spring also brought softball with Phi Tau

compiling an unblemished 9-0 record in the regular season, and sweeping the tournament to win the divisional fraternity championship. Of course, the only way to end a good year is by looking forward to the next, and what a year it will be! We hope to realize our goal of a 30-man class of associate members with our revamped rush procedures. A road trip to Zeta chapter at Illinois for the great Buckeye—Illini clash, and a pool party with Beta Tau at Bowling Green traveling down to Columbus, are a few of the plans for our social calendar. Here's to all the chapters and colonies of Phi Kappa Tau. See ya' at Convention!

—Tony Mullins

PENN STATE—Spring proved to be a very successful semester for the brothers of Omicron. Our new philanthropy, the "Phi Tau Iron Man Competition," was a huge success for a first year event. While raising money for the Centre County Home Health Service, participants were given the opportunity to show their athletic prowess by competing in a one mile swim, ten mile bike ride and four mile run. Special thanks to Dave Wetherill and Phil Ianuzzi for their hard work in organizing this event.

Spring rush was quite successful, as we welcomed ten new associate members into the chapter. While maintaining a high academic standing, we enjoyed an active social calendar highlighted by our spring formal weekend.

On campus, Ron Henry was the head student trainer for the gymnastics team, which finished third in the nation; Jack Gorman served as president of the Skull and Bones Honorary Society and secretary of Lions Paw Senior Honorary; Kevin Cherry was busy with the undergraduate student government; and John Hishta was named chairman of the 1984 IFC Dance Marathon, the largest Greek philanthropy in the nation, raising \$130,000 last year. Finally, the chapter extends its best wishes to graduating brothers Ed Smarsh and Bruce Gray, both of whom will be married this summer.

Our door is always open at Omicron. Stop by for a visit.

—John F. Hishta

PURDUE—Lambda has just completed what is surely one of the best semesters ever this past spring. We added four new trophies to our trophy case by winning second place with the women of Delta Gamma in University Sing; second in Phi Gamma Delta's Softball Tournament; third place with the women of Alpha Gamma Delta in a tug-of-war philanthropy; and third with the women of Zeta Tau Alpha in a mud football contest sponsored by Sigma Nu. We've also completed renovations on many parts of our 57 year old house. A warm welcome to any Phi Taus who would like to stop in for a visit.

—Bryan K. Eakins

RENSSELAER TECH—This spring at Rho has been quite successful. After a revitalized membership orientation period, 25 candidates were initiated into the brotherhood, and two more freshmen were accepted into associate membership.

Scholarship has been an area where the chapter has been lacking in the past, but due to increased awareness in the chapter, we moved from 24th to 7th place among the 28



Members of Delta Xi chapter (Cleveland State) pose proudly in front of the house they will call home this fall.

fraternities on campus. We think that much of this improvement may be due to the career development program we've begun, as suggested by the Fraternity. One aspect of this program is the annual "Career Day," which brings alumni back to speak to the brothers about their careers.

After three long years of second place finishes, Rho regained control of the Barker Trophy, which is the inter-fraternity sports award at R.P.I. This trophy was retired three years ago by the chapter when we won it for three consecutive years, and you can bet that we're on our way to retiring it once again.

As usual, our social calendar was quite full this past semester. Our annual Valentine's Day Party was held in February, with a trip to San Juan, Puerto Rico raffled off among the brothers and their dates. There were also almost 30 brothers who spent their spring break in Florida. The semester's social activities culminated in April with a very enjoyable Parents Weekend.

We're looking forward to Convention this summer. See you in Mississippi.

—Frank De Martin

ROCHESTER TECH—We here at Gamma Nu are proud of our achievements during the past year. We've brought in 15 new members that are dedicated, hard workers for the chapter. In athletics, we won championships in ice hockey, volleyball and basketball; and took second place in football, third in "A" team bowling and first in "B" team bowling. With only a few brothers graduating, we look forward to the upcoming year.

Spring quarter was very busy for us, as we had something scheduled on just about every weekend. Our spring Sentimental Sweetheart Weekend was a great success as many of our alumni were able to make it back to share the weekend with us. Another major spring event, the Justine Fleischer Memorial Keg Roll for Tay-Sachs Disease, was a great success as we raised almost \$1,000. The keg roll is named for an alumnus' child who just recently died from the disease.

The keg roll is just one of the services that we perform for the community, as we hope to win the first place community service award next year after claiming the second place plaque last year.

Our doors at Gamma Nu are always open for anyone passing through the Rochester area. Stop by and visit with us!

—Timothy J. Moonan

SOUTHERN CALIFORNIA—Summer is here at last, and brings with it summer fun, parties and blonde beach beauties that go with it. The brothers of Pi chapter wish a mighty "whoo-ya" to you, and the fortune of having a summer that all the brothers won't forget.

While the rest of the world watched as tornados and torrential rains pounded the southland this spring, brothers at Pi chapter quietly slipped away for such awesome events as the Palm Springs weekender, "splurges" in Lake Havasu and Ensenada, and craziness in the powder at Mammoth Mountain.

After our pre-rush Malibu Beach party, the brothers will be sipping champagne in our new redwood hot tub. Finally, we congratulate graduating brothers Bob Gunnarsson and Stephen Sommers. Bob has joined the professional baseball ranks, and Steve is now gracing the silver screen. Good luck to all the chapters in the coming year.

—John Chagdes

SOUTHERN MISSISSIPPI—The just concluded semester has been an eventful and successful spring for Beta Epsilon. Spring rush efforts brought us five new associates—we anticipate initiating all of these—plus four fall holdovers when we return to school, making the group the largest fall class in many years.

Our social schedule featured our Super Bowl party and Red Carnation Ball in Natchez, Mississippi. Everyone especially enjoyed the afternoon cocktail party at the ante bellum home of the mayor of Natchez, beginning a new chapter tradition. Our annual spring party, "Lost Weekend," proved to be the most successful social event on campus. Decorations were more extravagant than ever, and the finest bands in the South made the whole weekend something to remember. We even had clear weather for the entire weekend—quite a change from what we had been used to.

The weather this spring was unfortunate for many, including our own Dean of Students,

whose home was flooded to the eaves by the rising water. Chapter members helped clean up the mess and moved furniture and ruined items. Many of us also stayed to help neighbors who were also affected. At the annual IFC award banquet, the chapter's continuing commitment to community service was recognized, as we were named the winner of the Frank Allen Cain Community Service Award.

In February, we presented our Wendell Ladner Memorial Award to brother Larry Boyd. The award is presented to a senior basketball player who shows outstanding leadership and talent. Larry was a team captain for the year.

A first place tie in Greek Games also saw the chapter win first place in the tug-of-war after three years of being runners-up. As our motto says, "Success is never coasting." We've found that success comes from persistence.

As we look back on our year, the misfortunes that occur seem buried by all the good things that happen. Unfortunately, we had an experience this spring that cannot be overlooked. Our housemother of twenty-five years, Mrs. Grace Magee, suffered a stroke shortly after her 85th birthday. She's been recuperating for the past three months in a Hattiesburg nursing home. We have been very blessed to have Mom as our housemother, and we were recently told by her doctor that she has recovered well enough to return in the fall. We are hoping that she'll be well enough to be at Convention.

Finally, we would like to wish all the chapters a good summer. We'll see you on the Mississippi Gulf Coast for Convention.

—Steve Krohn

SOUTHWEST TEXAS STATE—Greetings from Gamma Psi, where many great things have happened this past semester. First, we moved into a new chapter house on May 25. We are now finally building up some equity through ownership rather than throwing away \$1,000 a month in rent. We also plan to construct a multi-purpose building next to the chapter house of about 2,000 square feet, which will be used for chapter meetings, rush functions and the like. All of this was made possible because of the hard work of our alumni and house corporation, headed by Robert Moore. Visitors are welcome to come by for the grand opening tour.

Founders' Day was celebrated on April 16 with more than 30 alumni present along with their families. Held at brother Jim Parkerson's river house on the San Marcos River, we served barbecue with all the trimmings. A graduate versus resident council softball game ended up in a 15-15 tie. Two weeks after Founders' Day, we were in South Padre for our spring formal, held this year at the Bahia Mar, a luxurious hotel overlooking the Gulf of Mexico.

Closer to home, we are proud to welcome two new members of our Board of Governors. Dick Green and David Hall are replacing Walter Hayes and Jack Mondine. Remaining on the Board is Robert Noren. Special thanks to all for their hard work and dedication to Gamma Psi.

Looking forward to seeing everyone at the National Convention in August.

—Parker Price

TENNESSEE—The spring quarter started quite well with an associate class of six men, the second largest spring class on campus. Rush chairman George Smith did a great job motivating the brothers and making sure everything went well.

Parents Day in April was also successful, as Steve Patterson organized and planned the enjoyable event. Together with the men of Delta Upsilon, our spring formal proved to be a highlight of spring quarter. It was held in Pigeon Forge, a small town nestled in the foothills of the Smoky Mountains.

On campus, James O'Neill was chosen as a student orientation assistant and named Smokey. Smokey, the blue tick hound, has long been a symbol here at Tennessee. Steve Catlett was selected to be a member of the All Campus Events Committee, which sponsors Homecoming, All-Sing and Carnicus. Finally, Rusty Callison won a \$1,200 award from the Philosophy Department, and Gary Rose was honored at the Greek Awards Banquet with a \$500 prize.

Things continue to improve for Delta Kappa. With the leaders we have now, we hope to continue our growth in the coming year. We have already planned summer and fall rush, and are striving to increase our membership up to the 50-man mark.

—Stephen Catlett

TRANSYLVANIA—Theta began winter semester with a successful and inspirational brotherhood week, culminating in the initiation of ten new brothers. Elections held in February found the following in leadership positions: John Erwin, president; William Crowe, vice president; Britt Reynolds, treasurer; Vince Tanamachi, secretary; Tom King, recruitment chairman; Joe Castro, membership orientation; Sean Tipton, social chairman; and Eric Durbin, scholarship and career development officer.

In February, we hosted National President John Green and Executive Director John Meyerhoff for breakfast along with Kappa chapter. Other events held this semester include our annual Playboy Party, Sweetheart Social and Spring Formal. As mentioned in the last chapter report, Theta Investments is

still growing and flourishing.

Service projects and fund raisers this spring included a car bash, clout card sales, toyland party and helping the Bluegrass Trust for Historic Preservation with an antique show. Our quartet provided the entertainment for an alumni luncheon and awards program.

Academically, the chapter GPA has improved dramatically to 3.03, second among campus fraternities. Seven brothers made a perfect 4.00, and 15 made the Dean's List.

In May, we honored Dr. Monroe Moosnick for his 30 years as chapter advisor. The Monroe Moosnick Roast was held at the Radisson Plaza Hotel with more than 150 in attendance. In his honor, we established the Monroe Moosnick Scholarship Fund for members of the chapter in financial need. Contributions from alumni will be solicited on an annual basis to set up a permanently endowed scholarship. We also presented the Monroe Moosnick Outstanding Alumnus Award to Bill McDonald, former Board of Governors chairman, for his hard work and dedication to the chapter. Thanks also to alumni Ben Nelson, Tim Collins and all others who made the Roast possible.

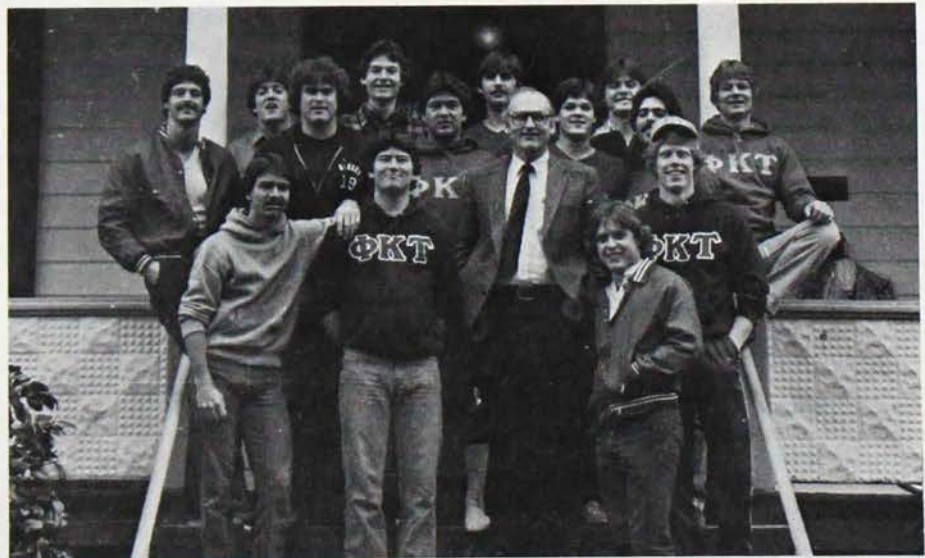
Our Board of Governors has been very helpful over the past year in directing the chapter room renovation, plans for the Roast and in financial matters. New Board officers include: Fon Rogers II, chairman; Dr. David Meyer, scholarship advisor; and William Hill, financial advisor.

Finally, congratulations to all of our graduating brothers and little sisters. Their efforts and support will be missed greatly, and we wish them the best of luck.

—John Erwin

WASHINGTON—Alpha Pi brothers extend a hearty greeting to Phi Taus all over the world. We just concluded an intense brotherhood night with a salmon bake in that well know resort area, Bullfrog Flats, Washington.

Other noteworthy accomplishments include a 3.12 winter quarter GPA and reaching the finals of Songfest for the third year in



Executive Director John Meyerhoff with members of Beta Omega chapter (Cal State-Chico) during a visit to California.

a row during Greek Week activities. Current plans include a variety of house improvements, which should help us with summer rush.

Once again, we here at Alpha Pi encourage anyone to stop by and visit us here in Seattle.

—Brian Rayl

WASHINGTON STATE—The men of Alpha Kappa have had quite a busy year. After a good rush, our "American Express" football team started to roll, ending up number one on Greek row and second on campus. We lost the campus championship by one first down after scoring two late touchdowns to tie the game at 14-14. Following our disappointing loss, the Cougars dumped the Washington Huskies and knocked them out of the Rose Bowl.

The rest of the semester was divided between tests, breaks and our "Pledge Princess Contest." We also pulled through scholastically with a sixth place finish out of 24 fraternities.

The early part of the spring semester was spent following the Cougar basketball team all the way, from their last second victory over UCLA to their 54-50 loss to Virginia in the NCAA West regionals. Other activities included our Rose Formal, cruise, Mom's Weekend and a visit from Executive Director John Meyerhoff.

Next year, we're shooting for number one in intramural football, continued improvement in our scholarship and a new fire escape for the chapter house.

—James Chess

WESTMINSTER—Beta Phi has had another successful and productive year. After picking up 18 associate members in the spring, we completed our 14th annual Basketball Marathon. The more than \$2,000 raised was donated to the American Cancer Society. We are also proud of once again compiling the highest GPA among fraternities on campus, for the 23rd consecutive term.

Special congratulations to Dave Leukhardt for his MCAT score, which was the highest in Westminster College history. Finally, the reestablishment of our Board of Governors should be a big help for the chapter in the future.

—Kurt Schroeder

YOUNGSTOWN STATE—Gamma Pi has completed another successful year here at YSU. We placed first in scholarship among fraternities for the sixth year in a row, retained our "Fraternity of the Year" trophy for the fifth straight time and captured second place in Greek Sing.

On campus, Russ Brodnan is president of the Interfraternity Council; Rod Laird is treasurer; Victor Maras is program board chairman; Larry Fitzsimmons has been appointed editor-in-chief of the 1983-84 NEON, YSU's yearbook; and Scott Carney has been named sports editor of the same publication.

Socially, our annual Dinner Dance and Awards Banquet was a big success, with many alumni and undergraduates in attendance. An alumni scholarship fund was announced at the banquet, and will be awarded for the first time next year.

Service projects this semester included a dance-a-thon with Delta Zeta Sorority and an IFC tri-party to raise money for the Salvation Army.

Recently elected officers include; Rob Chiclowe, president; Frank Bertuzzi, vice president; Carlo Ciccone, treasurer; Mike Carlozzi, secretary; Brian Scudier, sergeant-at-arms; and Dan Flaherty, chaplain. Thirteen brothers are planning to attend the Convention in August. We'll see you there.

—Larry Fitzsimmons

COLONY REPORTS

MICHIGAN—Starting out as just a dream in early February, the refounding of Tau colony at the University of Michigan has been an incredible endeavor. In just two short months, we established a base of 16 men, a solid financial structure and a fired up group of associate members eager to return in the coming fall to continue where we left off.

Due to the widespread enthusiasm of colony members, we are in strong shape to assume an active role in the Interfraternity Council next fall. Goals for the upcoming year are doubling of colony membership, housing arrangements for 1984-85 and aggressive work on chartering requirements to complete all by early spring. Initial alumni contact has shown a great deal of enthusiasm, and we look forward to meeting any and all Tau alumni. We have a dynamic group—one ready to reestablish Tau and create some excitement in Ann Arbor absent for the past twelve years.

Our officers are creating comprehensive plans for rush. We welcome recommendations or other assistance from alumni in this regard. Look out Phi Kappa Tau, we're on the way back!

—Jon Bogema

TENNESSEE-MARTIN—the brothers of the UT-Martin colony have taken the campus by storm. A hard fought victory in a battle for campus recognition has only increased our desire for installation as a chapter—almost

certainly by the coming winter.

With the much appreciated guidance of the National Headquarters, our membership has risen to 28, including 10 associate members. These ten men represent the largest number of associates gained by any fraternity on campus this spring—quite an accomplishment. Special thanks to John Meyerhoff, Joe Joiner, Tim Collins and especially Steve Lilly, who has not only been an excellent consultant, but a good friend.

Our Alpha associate member class was initiated at the University of Evansville on April 26 by members of Delta Beta chapter. Thanks again to them for that.

With our internal excitement and drive, and our external support, our brotherhood has been strengthened as our membership has grown. We're all looking forward to the coming year. Phi Kappa Tau has arrived at U.T.M.

—Perry Jernigan

UCLA—Beta Rho colony has just completed one of its most productive quarters. From spring elections, we've acquired proud, hard working officers. Under the guidance of new president Richard Gee, we've strengthened the colony.

Special thanks to the chapters in the Golden Bear-South Domain. We've enjoyed your participation in our rush parties, and appreciate the invitations and hospitality you've shown us at your social events.

The formal organized by Beta Psi at Long Beach is definitely worth mentioning, as is the toga party at Pomona. We hope the winter formal we're planning at the Ambassador can measure up.

Finally, our major contribution to strengthen Phi Kappa Tau comes from our fine spring associate class. Each was hand chosen and carefully considered. Beta Rho hopes that your fall rush is successful. We'll see you at Convention.

—Kris Campbell

RECOMMEND A RUSHEE

Cut out this coupon and mail to the president of the chapter indicated. Addresses are included on page 31 of this issue.

To the Brothers of _____ chapter located at _____
(college/university)

I recommend _____
(Full Name)

Home address _____

College address _____

Father's Name/Fraternity affiliation _____

Remarks _____

Signed _____ Chapter and Year _____

Address _____

Recommendation acknowledged by _____
(Name) (Date)

CHAPTER DIRECTORY

- Alpha**—Miami University, 320 N. Tallawanda Rd., Oxford, OH 45056. Ken Grupe, Pres.
- Beta**—Ohio University, 2 University Terrace, Athens, OH 45701. Joe Adkins, Pres.
- Gamma**—Ohio State University, 141 E. 15th St., Columbus, OH 43201. Craig Little, Pres.
- Delta**—Centre College, 142 Beatty Ave., Danville, KY 40422. Buist Richardson, Pres.
- Epsilon**—Mount Union College, 1400 S. Union Ave., Alliance, OH 44601. Rick Marabito, Pres.
- Zeta**—University of Illinois, 310 E. Gregory Drive, Champaign IL 61820. Dan Colbert, Pres.
- Eta**—Muhlenberg College, 3210 Chew St., Allentown, PA 18102. Mark A. Bisbing, Pres.
- Theta**—Transylvania University, Clay-Davis Hall, Lexington, KY 40508. John M. Erwin, Pres.
- Iota**—Coe College, Box 581, Coe College, Greene Hall, Cedar Rapids, IA 52402. Michael R. Knipp, Pres.
- Kappa**—University of Kentucky, 687 Woodland Ave., Lexington, KY 40508. Seth B. Hall, Pres.
- Lambda**—Purdue University, 516 Northwestern Ave., West Lafayette, IN 47906. Bryan K. Eakins, Pres.
- Mu**—Lawrence University, 206 S. Lawe St., Appleton, WI 54911. David Butler, Pres.
- Nu**—University of California—Berkeley, 2335 Piedmont Ave., Berkeley, CA 94704. Matthew D. Anacker, Pres.
- XI**—Franklin and Marshall College, 605 College Ave., Lancaster, PA 17603. Craig R. Sellers, Pres.
- Omicron**—Pennsylvania State University, 408 E. Fairmount, State College, PA 16801. C. Kevin Cherry, Pres.
- PI**—University of Southern California, 904 W. 28th St., Los Angeles, CA 90007. John A. Smolarski, Pres.
- Rho**—Rensselaer Polytechnic Institute, 19 Sherry Rd., Troy, NY 12180. Frank DeMartin, Pres.
- Tau Colony**—University of Michigan, c/o Housing Information Office, 1011 Student Activities Building, Ann Arbor, MI 48109. Jon Bogema, Colony Pres.
- Upsilon**—Nebraska Wesleyan University, 5305 Huntington Ave., Lincoln, NE 68504. Vic Weber, Pres.
- Phi**—Bethany College, P.O. Box 216, Bethany, WV 26032. J. Russell White, Pres.
- Chi**—North Carolina State University, 2511 W. Fraternity Ct., Raleigh, NC 27606. Michael D. Wynne, Pres.
- Psi**—University of Colorado, 1150 College Ave., Boulder, CO 80302. Jeffrey D. Durr, Pres.
- Alpha Gamma**—University of Delaware, 720 Academy St., Newark, DE 19711. G. David Bolen, Pres.
- Alpha Delta**—Case Western Reserve University, 11921 Carlton Rd., Cleveland, OH 44106. David Macy, Pres.
- Alpha Epsilon**—Kansas State University, 1606 Fairchild, Manhattan, KS 66502. Mitchell K. Lee, Pres.
- Alpha Eta**—University of Florida, 1237 S. W. Second Ave., Gainesville, FL 32601. Walter N. Strump, Pres.
- Alpha Kappa**—Washington State University, 715 California, N.E., Pullman, WA 99163. James A. Chess, Pres.
- Alpha Lambda**—Auburn University, 317 S. College St., Auburn, AL 36820. James M. Stubbs, Pres.
- Alpha Nu**—Iowa State University, 307 Ash Ave., Ames, IA 50010. Jay L. Kim, Pres.
- Alpha Pi**—University of Washington, 4515 21st Ave. N.E., Seattle, WA 98105. Eric L. Rayl, Pres.
- Alpha Rho**—Georgia Institute of Technology, 175 Fourth St., N. W., Atlanta, GA 30313. Thomas J. Segatta, Pres.
- Alpha Sigma**—Colorado State University, 1504 Remington, Fort Collins, CO 80521. Chris Spelic, Pres.
- Alpha Tau**—Cornell University, 106 The Knoll, Ithaca, NY 14850. Joel Zackin, Pres.
- Alpha Phi**—University of Akron, 380 E. Buchtel Ave., Akron, OH 44304. Robert A. McCarty, Pres.
- Alpha Chi**—Mississippi State University, 304 South Jackson, Starkville, MS 39759. Votie Holmes, III, Pres.
- Alpha Psi**—University of Texas, 515 E. Robinson Blvd., El Paso, TX 79902. Michael W. Dillman, Pres.
- Alpha Omega**—Baldwin-Wallace College, Heritage Hall, Section A, Berea, OH 44017. Richard W. Ellis, Pres.
- Beta Alpha**—University of Texas at Austin, 2208 San Gabriel, Austin, TX 78705. Donald Phillips, II, Pres.
- Beta Beta**—University of Louisville, 2102 Confederate Place, Louisville, KY 40208. Dwayne A. Mosier, Pres.
- Beta Gamma**—University of Idaho, 620 Idaho St., Moscow, ID 83834. Richard J. Kross, Pres.
- Beta Epsilon**—University of Southern Mississippi, Southern Station, Box 8348, Hattiesburg, MS 39401. Steven C. Krohn, Pres.
- Beta Zeta**—New Mexico State University, P.O. Box 3-CT, University Park, NM 88003. Brett Bentley, Pres.
- Beta Iota**—Florida State University, 108 S. Wildwood Dr., Tallahassee, FL 32306. Paul G. Allen, Pres.
- Beta Kappa**—Oklahoma State University, 1203 W. Third St., Stillwater, OK 74074. Michael A. Snodgrass, Pres.
- Beta Lambda**—Indiana University, 72 E. 8th St., Bloomington, IN 47401. Michael W. Bell, Pres.
- Beta Xi**—University of Georgia, 846 S. Millledge Ave., Athens, GA 30601. C. William Crane, Pres.
- Beta Omicron**—University of Maryland, 7404 Hopkins Ave., College Park, MD 20741. Richard Fischer, Pres.
- Beta Rho Colony**—University of California at Los Angeles, 406 Kelton Ave., Los Angeles, CA 90024. Richard M. Gee, Colony Pres.
- Beta Tau**—Bowling Green State University, Bowling Green, OH 43403. M. James Greutmann, Pres.
- Beta Upsilon**—Hobart College, 573 S. Main St., Geneva, NY 14456. Paul M. Blumenfeld, Pres.
- Beta Phi**—Westminster College, 134 Waugh Ave., New Wilmington, PA 16142. Kurt Schroeder, Pres.
- Beta Psi**—California State University at Long Beach, 3841 E. Broadway, Long Beach, CA 90803. Randy Drayer, Pres.
- Beta Omega**—California State University at Chico, 611 W. Fifth St., Chico, CA 95926. Scott B. Vincent, Pres.
- Gamma Alpha**—Michigan Technological University, 1209 W. Quincy St., Hancock, MI 49930. Steve Bailo, Pres.
- Gamma Beta**—University of Cincinnati, 347 Probasco St., Cincinnati, OH 45220. Ron Weber, Pres.
- Gamma Gamma Colony**—St. John's University, 45-10 166th Ave., Flushing, NY 11358. Michael Mongelli, Colony Pres.
- Gamma Delta**—Northern Michigan University, 413 N. Front St., Marquette, MI 49855. Paul McPherson, Pres.
- Gamma Eta**—East Carolina University, 409 Elizabeth St., Greenville, NC 27834. Robert R. Rucks, Pres.
- Gamma Iota**—California State University at Sacramento, 2921 Hurley Way, Sacramento, CA 95825. Mark Kowalewski, Pres.
- Gamma Lambda**—Central Michigan University, 204 South Washington, Mt. Pleasant, MI 48858. Denis J. Bouchard, Pres.
- Gamma Mu**—Bradley University, 1509 W. Fredonia St., Peoria, IL 61606. Michael P. Loden, Pres.
- Gamma Nu**—Rochester Institute of Technology, 25 Andrews Memorial Dr., Box 1050, Rochester, NY 14623. Timothy Moonan, Pres.
- Gamma Xi**—East Central University, Station 1, Ada, OK 74820. Mark Prentice, Pres.
- Gamma Omicron**—California State University at Fullerton, 1950 N. State College Blvd., Fullerton, CA 92631. Dennis Lynaugh, Pres.
- Gamma Pi**—Youngstown State University, 274 N. Heights Ave., Youngstown, OH 44504. Robert Chiclowe, Pres.
- Gamma Rho**—Kearney State College, 2310 Ninth Ave., Kearney, NE 68847. Scott Spellman, Pres.
- Gamma Upsilon**—Spring Hill College, Mobile, AL 36608. Thomas A. Lang, Pres.
- Gamma Psi**—Southwest Texas State University, 828 Chestnut, San Marcos, TX 78666. Parker Price, Pres.
- Delta Alpha**—Iowa Wesleyan College, E. McKibben Hall, Mount Pleasant, IA 52641. Richard F. Ross, Pres.
- Delta Beta**—University of Evansville, 2112 Lincoln Ave., Evansville, IN 47714. Stephen C. Baker, Pres.
- Delta Gamma**—University of Mississippi, Box 307, University, MS 38677. Sam Kelly, Pres.
- Delta Theta**—Georgetown College, Box 212, Georgetown, KY 40324. Robert B. Keifer, III, Pres.
- Delta Kappa**—University of Tennessee, 1800 Lake Ave., S.W., Knoxville, TN 37916. James L. Solka, Jr., Pres.
- Delta Lambda**—Muskingum College, Stadium Dr., New Concord, OH 43762. Dan Yeagley, Pres.
- Delta Nu**—Wright State University, Office of Student Development, Dayton, OH 45431. Jeffrey D. Robinson, Pres.
- Delta Xi**—The Cleveland State University, 2422 Prospect, Cleveland, OH 44115. William Anderson, Pres.
- Delta Omicron**—Pan American University, c/o Student Center, Box 205, Edinburg, TX 78539. Gumecindo Ybarra, Pres.
- Delta Pi**—Murray State University, 917 N. 16th St., Murray, KY 42071. James Peck, Pres.
- Delta Rho**—Eastern Kentucky University, Powell Building, Richmond, KY 40475. Andy Hoekzema, Pres.
- Delta Sigma**—Webber College, Box 627, Babson Park, FL 33827. Albert Pinto, Pres.
- Cal Poly Pomona Colony**—California State Polytechnic University, Pomona, 300 West Center, Pomona, CA 91768. Chuck Tingstad, Colony Pres.
- F.I.T. Colony**—Florida Institute of Technology, c/o Student Activities Office, Melbourne, FL 32901. Charles Tackett, Colony Pres.
- UT-Martin Colony**—University of Tennessee at Martin, Martin, TN 38238. Frank Ziegler, III, Colony President.
- Texas A & M Colony**—Texas A & M University, P.O. Box 4437, College Station, TX 77844. Mike Ross, Colony Pres.

ALUMNI ASSOCIATIONS

- Atlanta**—Atlanta Area Alumni Association: Contact Jim Youngblood, 2963 Habersham Rd. N.W., Atlanta, GA 30305. 404/231-1957 (work); 404/231-0853 (home).
- Dallas**—Dallas-Ft. Worth Area Alumni Association: Contact Greg Hollen, United Technologies—Mostek, 1215 W. Crosby Rd., Carrollton, TX 75006. 214/466-6682 (office).
- New York City**—New York City Area Alumni Association: Contact Rick Atkinson, 22 Waterview Ave., Massapequa, NY 11758. 212/581-8150 (office); 516/795-3522 or Gene Stewart 212/705-4835 (office); 212/639-5597 (home).

The Laurel of Phi Kappa Tau
 15 North Campus Avenue
 Oxford, Ohio 45056

Non-Profit Organization

U.S.
 POSTAGE PAID
 Permit #55
 Huntington, IN

MOVING?

Be sure to take The Laurel along! Clip the mailing label on the back of this magazine to let us know your old address, and attach it in the space below. Write your new address in the space provided and mail this coupon to Headquarters.

NAME _____ (please print)

ADDRESS _____ APT. NO. _____

CITY _____ STATE _____ ZIP _____

ATTACH LABEL HERE

CLIP AND MAIL TO:
 Phi Kappa Tau
 P.O. Box 30
 Oxford, OH 45056

FRATERNITY ROW



PHI TAU TEMPTATIONS

	Shipping	Quantity	Amount
ΦKT Needlepoint Kit	\$25.00	\$1.25	
ΦKT Beverage Glasses			
12 oz. tumbler	\$9.00/half doz.	\$2.75	
Old Fashioned Glass	\$9.50/half doz.	\$2.75	
ΦKT Matches	\$1.00/box	\$1.25	
The Songs of ΦKT (three 78 r.p.m. records)	\$ 5.00	\$1.75	
ΦKT Golf Shirt	\$12.00	\$1.25	
(one and one half inch letters come in white M,L&XL)			
Ecru Orlon V-Neck Sweaters—embroidered with Phi Kappa Tau Coat of Arms	\$17.50	\$1.25	
ΦKT Lined Jackets	\$17.50	\$1.25	
(Maroon with Gold ΦKT in 2" Lettering) comes in L&XL			
ΦKT Baseball Caps	\$ 6.00	\$1.25	
(Maroon and white adjustable with 2" ΦKT in gold)			
ΦKT Bulova Accutron 14 kt. gold wrist watch (limited quantity)	\$180.00	\$2.75	
ΦKT Bulova Accutron 14 kt. gold pocket watch (limited quantity)	\$195.00	\$2.75	
Limited Edition print of the Executive Offices	\$12.50	\$1.50	
Cross Classic Black Pen w/attached coat-of-arms emblem	\$20.00	\$1.25	
Cross Classic Black Soft Tip Pen w/attached coat-of-arms emblem	\$27.50	\$1.25	
Cross Classic Black Pen and Pencil Set w/attached coat-of-arms emblems	\$43.50	\$1.25	
ΦKT Playing Cards (new item!)	\$ 5.00	\$1.25	
Phi Kappa Tau Coin	\$ 3.00	\$1.25	

Name _____ Address _____ Net Sale _____

Mail with full payment to Phi Kappa Tau Fraternity, P.O. Box 30, Oxford, Ohio 45056. (Ohio residents only) 5% Sales Tax _____

MAKE CHECK PAYABLE TO PHI KAPPA TAU. Prices are subject to change without notice. Total _____

Cartoon by John F. Hummel, Jr.