

# The Laurel

PHI KAPPA TAU



Fall • 1959

# THE FRATERNITY HOUSE

## SYMBOLISM

### II. Study Rooms—Γενέσθω Φῶς (Genestho Phos)

*By the Reverend Charles D. Spotts, National Chaplain*

A Fraternity Chapter House is part of an academic community. It would be incongruous as part of a suburb. It would have no meaning as part of military establishment. It would be out of place among the buildings of a state capitol. Even the space age could not make sense out of a Fraternity House on the moon. It is an integral part of the American academic scene. It belongs only on a college or university campus.

This unique function of the Fraternity House is symbolized by its provisions for study, whether these provisions include only individual study rooms, or, in addition, a study hall and a library. Whatever the physical provision the function is primary. Unless the Fraternity House includes serious provision for study it ceases to be a Fraternity House and becomes only a club.

The study-room in a Fraternity House is not the same as a study-room in a library, or in a private home, or in a dormitory, or in a trailer home of a married couple. There is no substitute for a study-room in a Fraternity House. It is more than just a study-room. It is a study-room, inextricably bound up with the life of a brotherhood. It cannot be isolated. It is part of a whole, but can never be the whole.

Look at a sophomore brother settling down in his study-room, for several hours of preparation for tomorrow's class in Comparative Anatomy. As he works he meets a problem which baffles him. But he is not alone. Next door is a senior who earned an A in Comparative Anatomy. When the sophomore goes into his room for help it is not an intrusion into one's privacy. In a Fraternity House that kind of privacy does not exist. It is not an awkward move which one makes with a certain amount of hesitancy. Such awkwardness has already been broken down by the previous experiences of *Agape*, brotherhood at its best. The sophomore has had a double date with this senior; they have played together on the chapter football team; they have encountered on crucial issues at chapter meetings; they have a corporate reaction to the chaplain's fine prayer at the recent chapter meeting; the senior was the sophomore's big brother at the time of the pledging ceremony. When he goes to the senior for help he is not intruding, it is not an awkward move; it is the most natural uninhibited move of one who belongs.

When the Fraternity House has become an integral part of the college or university, its study-rooms will be more than physical settings for the rat-race; more than gambling dens where the rolling of dice determine which courses require preparation and which don't; more than the locus of crystal balls to help in the game of out-guessing the professors with the aid of examination files, rumors and other devices; more than convenient places for post-midnight cramming for examinations. No! The study-room is really the heart of the university, the scene of honest searching for truth, the happy place where discoveries are made, where light breaks through. Above the entrance of each study-room might well be inscribed the passage from the Greek Septuagint translation of the first Chapter of Genesis Γενέσθω Φῶς Let There Be Light.

# THE LAUREL

## of Phi Kappa Tau

JACK L. ANSON, *Editor*



---

---

VOLUME XLVIII      SEPTEMBER, 1959      NUMBER 1

---

---

THE PHI KAPPA TAU FRATERNITY

CENTRAL OFFICE

OXFORD, OHIO

*The exoteric publication of The Phi Kappa Tau Fraternity. Published prior to 1917 as "Sidelights." Scheduled to appear quarterly under direction and authority of the National Council.*

### COVER

The beautiful building on the cover of *The Laurel* is Miami University's Sesquicentennial Chapel. The pictured scene is of the dedication ceremonies held on the occasion of Miami's June, 1959, commencement. The building was made possible by gifts from alumni and friends.

### CONTENTS

Miami University Celebrates 150 Years . . . . .	3
Mrs. William H. Shideler Dies . . . . .	7
The Shideler Memorial Fund . . . . .	8
Thomas M. Iiams, Colgate Librarian . . . . .	9
Thomas A. Ballantine, Vice President . . . . .	11
Miss Ohio's Message to Mom and Dad . . . . .	13
Carl Peets, President of Counselors . . . . .	14
Imhoff Stars on NCAA Championship Team . . . . .	15
Davis, Number Two in U.S. Shot Put . . . . .	16
Phi Kappa Tau Athletes . . . . .	16
News of the Official Family . . . . .	20
Chapter Eternal . . . . .	21
Contributors to the 1958-59 Development Fund . . . . .	23
Chapter Directory . . . . .	28

Acceptance for mailing at special rates of postage provided for in Section 1103, Act of October 3, 1917. Published quarterly by The Lawhead Press, Inc., 900 East State Street, Athens Ohio, official printers for The Phi Kappa Tau Fraternity. Entered as second class matter at the Post Office at Athens, Ohio. Additional entry at the Post Office at Oxford, Ohio.



*Prominent in Miami's Sesquicentennial Commencement in June were these four outstanding Phi Taus. In the usual order are Hugh C. Nichols, Miami, president of Miami's Board of Trustees; Ernest H. Volwiler, Miami, retiring president of Abbott Laboratories, who was one of the recipients of a specially-designed medallion for the occasion; William N. Liggett, Miami, in his second term as president of the Miami Alumni Association, and Dr. William E. Alderman, Ohio, retiring dean of Miami's College of Arts and Science, who was awarded an honorary doctor of laws degree.*

# THE LAUREL

---

---

A Bow to "The Mother of Fraternities"!

## Miami University Celebrates 150th Anniversary With Phi Kappa Tau Playing Prominent Role



Board of Trustees President Nichols, Alumni Association President Liggett, University Foundation President Gansberg are Alpha Alumni



By Richard J. Young, Miami

This is the Sesquicentennial Year for Miami University in Oxford, Ohio. Throughout the collegiate world the picturesque 150-year-old state university is known as "Mother of Fraternities."

Phi Kappa Tau was founded on the Miami campus in 1906. Preceding were the Alpha chapters of Beta Theta Pi, Phi Delta Theta, and Sigma Chi fraternities, and Delta Zeta Sorority. Following came the establishment of the Delta Sigma Epsilon sorority, which merged with Delta Zeta in 1955.

Today, Central Offices of Phi Kappa Tau, Beta Theta Pi, Phi Delta Theta, and Delta Sigma Pi adjoin Miami's campus. Countless persons visit the storybook town of Oxford each year for purposes solely associated with the traditions or the business of these fraternities.

So it is that Greeks have more than passing interest in the Sesquicentennial of the institution chartered by the Ohio General Assembly on February 17, 1809, as "The Miami University."

The story of this century and a half is told brilliantly in *The Miami Years: 1809-1959* by Walter Havighurst, Phi Delta Theta, research professor of English at Miami, author of fourteen other books. In 252 lively pages, Havighurst has packed a vivid portrayal of an institution's struggles and growth and of the people who have brought these about.

*The Miami Years* contains much to fascinate the non-Miamian. Through its early pages, Havighurst has woven the flavor of the frontier in showing how a small college took shape in the wilderness. One sees William Holmes McGuffey as a young Miami professor preparing the series

of readers which became the basic textbooks in the schools of 37 states. There are the clashes between bigots and liberals in a frontier context; between stern disciplinarians and unruly young students who had to be told not to wear dirks and pistols to class. Then comes the impact on a near-border college as war breaks out between sections of its nation, and volunteers for both sides begin holding separate drills on the same small campus and leave that campus on the same train to face each other later under separate colors.

But the story of Miami's fraternities and of its fraternity men becomes a dominant part of this skilled and disciplined account,

because it has been so persistently a factor in Miami's life.

Havighurst asserts that of some 4,000 fraternity chapters in the United States and Canada in 1958, one in every ten had its origin on the Miami campus; one sixth of all members of Greek-letter fraternities belong to societies founded at Miami.

"The Miami University" was a direct product of the terms under which the Ohio country was settled, once the Indians had been driven out and the Northwest Ordinance of 1787 was given a chance to work. Terms of the John Cleves Symmes Purchase of land between the two Miami Rivers included provision for setting aside one township for support of a university. It was typical of the times that this township eventually was designated, tardily, on lands outside the original purchase; that there was much argument over whether the university need be located within its supporting township, and that revenue off these lands never afforded the support envisioned. Rivalries, war, hard times and frontier factors delayed actual start of collegiate instruction until November 1, 1824.

By the time this new Greek movement blossomed from the rivalry between Miami's Erodelphian and Union Literary Societies, Miami with 250 students was the nation's fourth-largest institution of higher learning. Its enrollment then was exceeded only by Harvard, Yale and Dartmouth. Yet more wars, more strife, more hard times forced it to close for 12 years in 1873. Reopening in 1885 with state assistance brought permanent clarification of its status as a state-supported university, and the fraternity system recovered as the university recovered.

As the reopening brought liberalization of the old classical curriculum and a broadening in the concept of a university's needs and responsibilities, Miami became co-educational. Its first woman student was Ella McSurely, daughter of a Beta who was librarian and a member of the board of trustees. Yet it was not until a normal college was added in 1902 that women students arrived in any number. And only then did the university which had pioneered in men's fraternities become part of a women's fraternity movement already underway more than 30 years.

Miami opened the doors of its lone building in 1824 to 20 students and three faculty members. Today it is a six-phase institution, serving more than 9,000 students. Its gracious home campus at Oxford includes more than 70 buildings; a student body of more than 6,000 requires a faculty of more than 300 plus an administrative and maintenance staff of about 700. Well over two-thirds of this student body are housed in university-owned residence halls, which include suites for sororities, or in fraternity houses; it's an almost self-contained university. Yet five off-campus centers known as Miami University in Dayton, in Piqua, in Norwood, in Middletown and in Hamilton serve more than 3,000 others. For these, student housing is no factor in growth, and enrollment is increasing even faster than at the main campus. Within a few years, Miami officials believe, some of these centers will have "backed up into" a full daytime schedule.

The Miami Sesquicentennial is dedicated to a re-examination of Miami's service to



Clifford D. Sheard (left), Miami, hands Miami President John D. Millett a \$500 check for a memorial window in Miami's Sesquicentennial Chapel, honoring the founders of Phi Kappa Tau. Sheard, secretary-treasurer of the Alpha Graduate Council, conducted the drive for funds among alumni of the chapter.



*Grayson L. Kirk, Miami  
President, Columbia University*

Ohio and the nation through higher education. From a formal opening February 17, with an address on the role of the state university by President James L. Morrill of the University of Minnesota, Miami will proceed through a schedule of symposia, concerts, lectures and exhibits involving many of the nation's most significant names in education, literature, the arts, the humanities and science.

No single event is planned to emphasize Miami's role as "Mother of Fraternities." Nor, of course, has fraternity affiliation at any time been a factor in selection of persons for responsibilities or honors in this major observance. Yet the significance of fraternities in Miami's history and in this Sesquicentennial cannot be ignored.

Of many persons to be awarded honorary degrees by Miami during this year, three of the first were fraternity men: Havighurst, Herman B. Wells, Sigma Nu, president of Indiana University and member of his fraternity's educational foundation, and Secretary of the Interior Fred A. Seaton, Beta Theta Pi.

A permanent reminder of this anniversary will be the All-Faiths Sesquicentennial



*Joseph W. Clokey, Miami  
First Dean of Fine Arts at Miami*

Chapel, which will be dedicated commencement weekend. This symbol of the state university's concern over religious freedom and opportunity for worship is being constructed entirely from gifts. Alumni of Alpha chapter contributed to dedicate two windows in honor of the founders of Phi Kappa Tau.

Delta Zeta, to mark the fiftieth anniversary of its founding at Miami, has contributed the chimes for the chapel. This follows a tradition: As a centenary gift to Miami, Beta Theta Pi built its companion; Phi Delta Theta added to campus facilities by furnishing the Robert Morrison Room in Upham Hall and making guest rooms and meeting space of its new General Headquarters available to the university, and Sigma Chi established a scholarship fund. Phi Kappa Tau marked its 50th anniversary by establishing a scholarship fund.

Approximately half of Miami's 6,000 Oxford-campus students are affiliated with one of its 21 fraternities or its 18 sororities. The fraternities are Acacia, Alpha Delta Phi, Alpha Phi Alpha, Beta Theta Pi, Delta Chi, Delta Kappa Epsilon, Delta Tau Delta, Delta Upsilon, Lambda Chi

Alpha, Phi Delta Theta, Phi Gamma Delta, Phi Kappa Tau, Pi Kappa Alpha, Sigma Alpha Epsilon, Sigma Chi, Sigma Nu, Sigma Phi Epsilon, Tau Kappa Epsilon, Theta Chi, Zeta Beta Tau and one local seeking affiliation, Kappa Phi Omega. Sororities are Alpha Chi Omega, Alpha Epsilon Phi, Alpha Omicron Pi, Alpha Phi, Alpha Sigma Alpha, Chi Omega, Delta Gamma, Delta Delta Delta, Delta Zeta, Gamma Phi Beta, Kappa Alpha Theta, Kappa Delta, Kappa Kappa Gamma, Pi Beta Phi, Sigma Kappa, Sigma Sigma Sigma, Theta Upsilon and Zeta Tau Alpha.

Some of the most colorful episodes in Havighurst's sesquicentennial history of Miami involve fraternity men.

There was the Snow Rebellion, early in 1848: Frisky, unruly Greeks, romping in snow on their way home from a Wednesday-night prayer meeting, came up with one of those Great Ideas. They rolled huge snowballs in through the doorway of Old Main, and up against the doors of classrooms and the chapel. More were rolled in, then pushed back against the outer doors from inside. The students left the building by sliding down ropes from a second-story window. Chapel next morning was held only after a janitor had climbed up that rope and dug a passage through the barricading snow inside. A threat of expulsion from stern President McMaster, as Havighurst reports, "fanned a smouldering defiance." Next night, a larger crowd nailed shut the doors and windows of the classrooms, stacked cordwood against doors, piled on desks, benches and old stoves and cemented the clutter with more snow. College was closed for a week. The students were called on the carpet one at a time for questioning. The ultimate expulsions came close to wiping out the student body. All members of Alpha Delta Phi were expelled or quit. Some of the Betas migrated to Centre and founded a Beta chapter there; the only two Betas left at Miami graduated the following summer, leaving the Alpha chapter inactive for four years. It was in this temporary void of fraternity activity that Robert Morrison started Phi Delta Theta the following December.

Phi Tau leadership in Miami affairs is quite evident today. Chairman of the Board of Trustees is Hugh C. Nichols. Another member of the board is J. Oliver Amos.



*Miami's Sesquicentennial Medallion*

President of the Miami Alumni Association is William N. Liggett. Chairman of the Miami Foundation is Alfred H. Gansberg.

One of five distinguished alumni honored at the Sesquicentennial Convocation was Dr. Ernest H. Volwiler, president of Abbott Laboratories. After the turn of the century, when Miami really began to grow, Phi Kappa Tau played a major role in the University's development. Long time dean of the College of Arts and Science was the late Dr. Edgar Ewing Brandon, past national president of the fraternity. A new men's residence hall has been named for Dr. Brandon. Retired as of June, 1959, is Dr. William E. Alderman, Ohio, who was dean of the College of Arts and Science for 23 years. Recently named acting dean of the School of Education is C. Neale Bogner, Baldwin-Wallace.

Dr. W. H. Shideler, Honored Founder,



*Dr. W. A. Hammond, Miami  
President, Phi Kappa Tau Foundation*

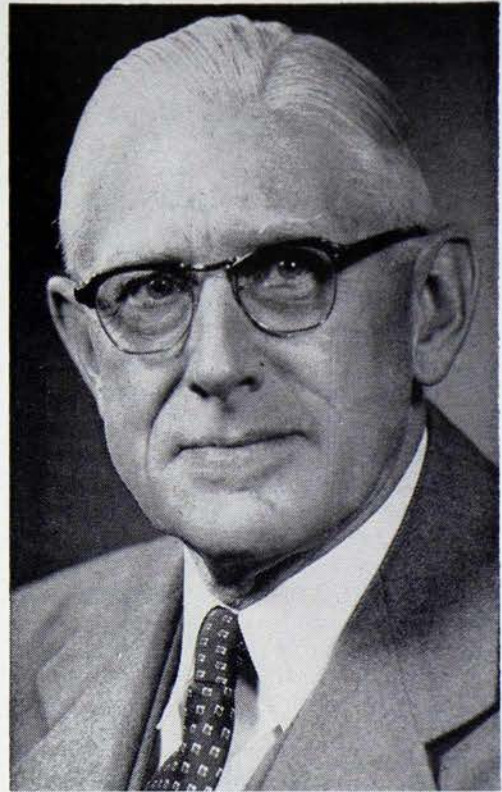
was credited with being one of Miami's all-time great teachers. He had been signally honored with the presentation to him of the Neil Miner award for the outstanding teacher of geology in the United States.

Two other retired Miamians of distinction are Dr. Charles H. Handschin, professor of German, and Dr. Herman H. Beneke, professor of economics. And a former dean of the College of Fine Arts, now emeritus, is Joseph W. Clokey, noted composer of sacred music.

Currently on the Miami University staff are the following: J. Paul Albert, associate professor of mathematics; Richard H. Chamberlain, associate professor of music; Warren Cunningham, associate professor of government; Richard T. Delp, assistant professor of psychology; Robert W. Edmiston, professor of education; Joseph W. Fichter, assistant professor of English; Russell E. Griffith, Jr., assistant professor of physiology; Everett J. Miltenberger, assistant professor of mathematics; Clifford D. Sheard, storekeeper; and Russell G. Young, director of purchasing.

Down through the years Miami men have been prominent in Phi Beta Kappa. Eighty members of Alpha chapter have been chosen for membership in this scholarship honor society.

Five members of Phi Kappa Tau have been editors of *The Miami Student*, campus newspaper. They are Joseph M. Bachelor, Ernest N. Littleton, Grayson L. Kirk,



*Dr. William E. Alderman, Ohio  
Retiring Dean of Arts and Science*

Richard J. Young and J. Oliver Amos. Dr. Kirk is now the president of Columbia University.

## Mrs. William Shideler Dies on July 30, 1959

Death came to Mrs. Katherine Hoffman Shideler, widow of the late Honored Founder William H. Shideler, on July 30, 1959, at her home in Oxford, Ohio, after an extended illness.

A native of Cincinnati, Mrs. Shideler was born on December 20, 1886, and later attended Miami University, from which she was graduated in 1908. She taught school in Hamilton County and on June 16, 1911, became the bride of Dr. Shideler.

A noted lecturer, Mrs. Shideler had traveled widely and was a member of the

Memorial Presbyterian Church, the Cincinnati Hobby Club, the Current Events Club, the Monday Club, the Oxford Music Club, Business and Professional Women's Club, the Women's Faculty Club, the American Association of University Women, Delta Omicron educational honorary and Zeta Tau Alpha social sorority. She had also served as patroness of several of Miami's local sorority colonies which later took on national affiliation.

Of a kind and loving disposition, she is survived by two sons, Dr. William Watson Shideler, an alumnus of Gamma chapter at Ohio State, and Dr. James Henry Shideler, an alumnus of Alpha at Miami, and six grandchildren. Burial was in the Miami University plot at Oxford Cemetery.

# Funds Drive for William H. Shideler Memorial Brings Hearty Response from Fraternity Alumni

The Dr. William H. Shideler Memorial Fund, which was announced in the June issue of *The Laurel*, has had a hearty response from the many alumni of the fraternity. The mailing which went to the alumni in July has been well received and contributions following the receipt of the request have been significant.

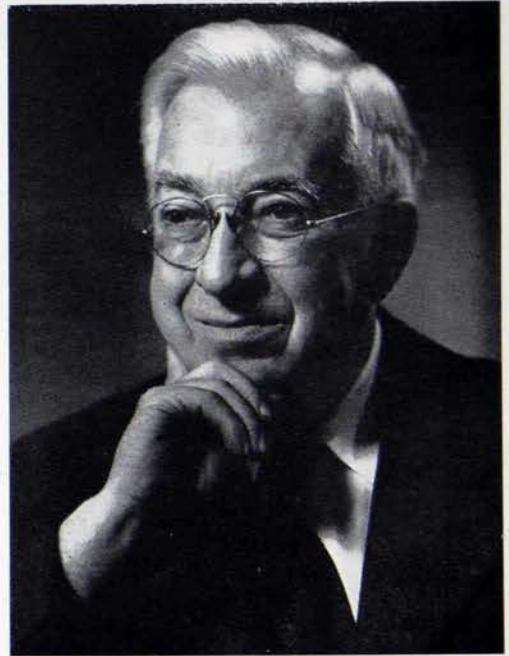
"It is not too late, was the statement of Dr. W. A. Hammond, President of The Phi Kappa Tau Foundation, when asked if contributions could still be received.

Foundation Treasurer Frank R. Musrush, *Ohio State*, pointed out that all contributions to the Shideler Memorial Fund are deductible for the purposes of Federal Income Tax.

The many letters which have come to the Foundation in response to the mailing have been heart-warming.

The December issue of *The Laurel* will carry a listing of those persons who have contributed to the Dr. William H. Shideler Memorial Fund of The Phi Kappa Tau Foundation.

It is not too late! The blank at the bottom of the page is for your convenience in sending your contribution to the Foundation. Make your check payable to The Phi



William H. Shideler

Kappa Tau Foundation and remember that your contribution is deductible for income tax purposes.

MR. FRANK R. MUSRUSH, *Treasurer*  
The Phi Kappa Tau Foundation  
51 North High Street  
Columbus 15, Ohio

Dear Brother Musrush:

Enclosed is my contribution to the Dr. William H. Shideler Memorial Fund.

My check is for \$.....

.....  
(name)

.....  
(Chapter) (address)

.....  
(date)

Please make check payable to THE PHI KAPPA TAU FOUNDATION.  
Contributions are deductible for federal income tax purposes.

## Thomas M. Iiams, Colgate Librarian, Moves To New Building, Ranking with the Finest

Contains 340,000 Volumes and Documents,  
Remarkable Rare Book Collection

By Bruce C. Holran, Colgate

On April thirteenth, the new Colgate University Library, in connection with the official launching of the college and university division of National Library Week, was dedicated. Although opened to students since September, 1958, the dedication ceremonies marked a dream come true for Thomas M. Iiams, Colgate's soft-spoken but business-like librarian.

For since he arrived on the Colgate campus in 1939, Tom has little by little looked forward to and planned the beautiful edifice which ranks among the finest small college libraries in the country today. Everything about the new library is plan-

ned to implement and broaden the desirable features of Colgate's liberal arts educational program, to the extent that Tom has assured its rightful place as the "heart of the University."

As part of the dedication program, the brothers of the Alpha Upsilon chapter honored Tom and his loving wife, Dorothy, at a reception on the eve of the formal ceremonies. Members of the Colgate faculty and staff, honored guest, and the eighty-man brotherhood attended.

A bibliophile since his teens, Tom went to the Henry E. Huntington Library, San Marino, California, in 1923 to learn librarianship under the famous bibliographer and librarian, Dr. George Watson Cole. While there he became an authority on methods of preserving rare books and manuscripts. He received an A.B. from U.C.L.A. in 1928, and in 1939, an M.A. from the University of Chicago Graduate Library School, becoming Colgate's librarian that year.

It was not long after that that the Alpha Upsilon chapter of Phi Kappa Tau came to know of Tom's warm friendship and interest in the educational development of young men, particularly their associations with books. In 1946, Tom was made a member of the Alpha Upsilon chapter, and for the last thirteen years his interest in the chapter has been as untiring as have been his efforts to realize his dream to have a new library.

Foremost among his chapter activity was his invaluable assistance with the planning of the new Alpha Upsilon chapter house in the early 1950's. That he helped is obvious by the fact that one large room is known as the library, although due to the lack of finances, it has never been possible to finish and decorate the room for that purpose. A few years later, he was instrumental in the



Thomas M. Iiams, Colgate  
University Librarian



*The new University Library at Colgate*

success of a book collection by the brothers of the chapter which established a fine library of some one thousand volumes including general reading and reference works.

Tom has also served on the Board of Governors of the chapter, and is a member of the executive committee of Delta Pi Sigma, the alumni corporation.

In addition to housing the University's growing collections, which now number about 225,000 volumes and 115,000 documents and pamphlets, the new Colgate Library provides for many related activities. Modular in concept, it incorporates the best features of sound library planning. It is, in fact, a laboratory—a place where students, instructors and books come together

under pleasant conditions conducive to productive scholarship.

For a small liberal arts college, Colgate has a remarkable collection of rare books and manuscripts. It has four Shakespeare Folios; the Book of St. Matthew from the famous Gutenberg Bible; the Kelmscott Chaucer; the first edition of Gray's "Elegy"; a copy of the Tyndale Bible printed in 1553; complete collections of first editions of Stevenson, Conrad, Masfield, T. S. Eliot, and other authors, together with many other rare items, including a growing collection of materials on the history of the book.

"All of this and the new building too," Tom states, "thanks to the generosity of Colgate's alumni and other many friends."

### Dr. J. R. Reitz, Case Aids Atomic Energy Commission

Dr. John R. Reitz, *Case*, now knows that his contributions to the theoretical work on the first direct conversion of nuclear reactor energy into electric power has been more of a success than expected. The conversion has been accomplished.

The Atomic Energy Commission named ten scientists who had contributed to the project that extended over a three-year period. Dr. Reitz, an associate professor of physics at Case, began work two years ago on the project.

### C. R. Kelly Leaves Lafayette Faculty for Trinity Position

Dr. C. Robert Kelly, *Westminster*, assistant professor of religion at Lafayette College, will leave to accept a teaching position at Trinity University, San Antonio, Texas, beginning September 1, 1959. Kelly has been on the faculty at Lafayette since 1952, and from 1955 to 1958 he served as the college's director of admissions.

Initiated as a charter member of Beta Phi chapter at Westminster and an original faculty adviser, he also served as adviser at Alpha Omicron at Lafayette.

## Thomas A. Ballantine

Glenmore Distilleries' New  
Vice President, Kappa  
Chapter Alumnus



Resigns as President of the  
Louisville Taxicab and  
Transfer Company



Civic Career Is Impressive,  
Includes City, State  
And Federal Work



*Thomas A. Ballantine, Kentucky*

Attorney, judge, executive, teacher, civic worker and administrator are only a few of the terms that describe Thomas A. Ballantine, recently named vice president of the Yellowstone Division of Glenmore Distilleries Company. His record of achievement is imposing.

An alumnus of Kappa chapter at the University of Kentucky, Ballantine was president of his chapter as an undergraduate and has continued his participation in the affairs of Kappa and Beta Beta at Louisville where he makes his home. In 1951 at the Bedford Springs, Pennsylvania, national convention, he was one of the speakers.

The year of Tom's graduation from Kentucky with his law degree was a busy one. In 1925 he entered the practice of law in June and married Marie Pfeiffer, a member of Alpha Xi Delta sorority. From 1927 to 1929 he was field assistant for the Travelers Insurance Company prior to forming a law partnership which association continued until 1939. He was the assistant director of law for the City of Louisville from 1934 to 1939. This posi-

tion terminated when he was named judge pro tem of the Chancery Branch of the Jefferson Circuit Court in Louisville.

He organized in 1939 a law firm with A. J. Carroll and Henry E. McElwain. During the war years their firm merged, becoming known as Allen, McElwain, Dining, Clarke and Ballantine.

He served during World War II with the Third Air Force and the Materiel Command and was separated as a major in 1945. Upon his return in October, he became actively engaged in the administrative affairs of the Louisville Taxicab and Transfer Company as general counsel and executive vice president. In April, 1946, he was named president and general counsel.

He resigned from his law firm in 1950 and devoted full-time to the affairs of the transportation firm until his resignation to accept his present position with Glenmore Distilleries in August, 1958.

Ballantine's list of civic and welfare contributions is long. He has served as a director and member of the executive committee of the Louisville chapter of the American

Red Cross and chairman of its Disaster Relief Committee. He has had two terms as a member of the Louisville and Jefferson Country Board of Health, as well as vice chairman and chairman of the Health and Welfare Council. He was a most successful campaign chairman for the Community Chest of Louisville.

As a member of the Kentucky State Fair Board he was in charge of the Youth Driver Program, Tomorrow's Travelers.

He was a faculty member and trustee of the Jefferson School of Law in Louisville from 1934 to 1948 and a trustee of the University of Kentucky from 1952 to 1955. He served for four years as president of the Louisville Council for Public Education and for three years as president of the Kentucky Independent College Foundation.

He has also served as president and director of the Better Business Bureau of Louisville, a director of the old Louisville Board of Trade, president and director of the Louisville Chamber of Commerce, director of Boy's Haven of Louisville and director of the Louisville Park Theatrical Association and a member of the Kentucky Primary Highway board.

The current president of the Kentucky Chamber of Commerce, he has been a member of the U. S. Chamber of Commerce Seminar Team explaining Business Conferences, Chairman of the U. S. Chamber of Commerce Committee on Education and chairman of the U. S. Chamber of Commerce Advisory Panel on Highways, Streets and Urban Transportation and a member of the U. S. Chamber's Advisory Committee on National Conference on Highway Financing.

Today he is director of the U. S. Chamber of Commerce, an associate member of the American Institute of Management, president of the Kentucky Mountain Laurel Festival Association, chairman of the Louisville Downtown Committee, vice president and director of Our Own Deliveries, Inc., and holds directorships with the Louisville Title Insurance Company, Lincoln Bank and Trust Company, Ohio River Sand Company, and the Commonwealth Life Insurance Company.

His outstanding achievements have been recognized by many. In 1950 the Advertising Club of Louisville presented him with

its Distinguished Leadership Award, in 1953 the Jefferson County Recreation Youth Association awarded him its honor plaque as Man of The Century, in 1954 he received a citation from Transylvania College on the occasion of its 175th anniversary "In recognition of Outstanding Achievements and Services in the field of Business and Community Service."

Tom and Marie Ballantine make their home at Lindenhurst, R. R. 1, Anchorage, Kentucky, and are the parents of three sons, Thomas A., Jr., John T., and William C. Ballantine.

---

## Fire Strikes Chapter House at Beta Lambda

The chapter house of Beta Lambda at Indiana University was seriously damaged by fire on May 6, 1959. Luckily, there was no injury or loss of life. The fire, which broke out in a corner of the dormitory, was quickly brought under control and confined to the third floor by the Bloomington Fire Department, which had all of its equipment on hand from two stations.

The cause of the fire was not determined because it had spread too much by the time the firemen arrived. However, it was generally thought to have been the result of faulty electrical wiring.

The fire was discovered by members of Sigma Chi shortly after 11 p.m. At that time one member was sleeping in the dormitory, which was not regularly used. He was promptly awakened and escaped without injury.

The house was leased by the Beta Lambda House Corporation from the Alpha Delta Pi Sorority. Although the fire damage was confined to the top floor, there was considerable water damage to two rooms and a bathroom on the second floor. Although the damage to the house was considerable, there was little loss of personal property.

On the night of the fire, the members slept at the Delta Tau Delta and Sigma Chi houses and were allowed to return to their building by noon the following day.

# Miss Ohio Has a Message for Mom and Dad

Peggy Putnam Is the Dream Girl of Gamma Chapter at Ohio State

Dear Mom and Dad (Alumni and Members).

I hope you won't mind too much if I write to your sons—the men of Phi Kappa Tau. I have met many of you as you re-

turned to OSU for Homecoming, Mother's weekend, Dad's day, etc., but I feel perhaps that I know you rather well through the sons you have reared.

For three short years, Phi Kappa Tau has made me feel welcome. If you let them, they will make you feel welcome, too! As I have seen them grow from pledges to actives and sometimes to officers, they have slowly grown from your boys into responsible young men. They've had to make major decisions about their actions; sometimes they were good and sometimes they were poor. They've been in love and out of love, on the dean's list and flunking, complaining occasionally but generally pretty happy. You see, they should be, because Phi Kappa Tau has done something for them that even you as parents couldn't do! It has given them over 100 brothers and a "Mom" away from home to share. And I guess a "Mom away from home" is just what each of us needs when we lack a collar button, a fourth for bridge, sincere advice or a confidential friend.

Another vital component of Phi Kappa Tau, though Baldy might disagree, is we of the female species, on whom they practice their manners, spend their paycheck, tease about getting fat, and finally end up marrying.

To me, Phi Kappa Tau means my fiance, friendliness, Goose's orchestra, Huckleberry Hound, Maverick, bridge, pledges running for the phone, outlandish 'ditches', The Zoom Song, the kitchen crew, "neatsville", Esther's cooking, parties and dances but most of all you! I cannot tell you how proud I have been to be a small part of this fraternity.

*Miss Peggy Putnam has served the State of Ohio as Miss Ohio during 1959. She represented the state in the Miss America Pageant, and is a member of Kappa Delta Sorority at Ohio State. This summer she will marry Larry Oates of Gamma chapter. The letter that appears here is a reprint from the Summer, 1959, issue of the GAMMA RAY.*



As I stood on the stage in Wooster last August, it was a great honor to have been chosen by a panel of judges to represent Ohio in the Miss America Pageant; and as I opened the box of beautiful red carnations I didn't even look at the card for I knew whom they represented. However, I considered it an even greater honor to have been Dream Girl of Phi Kappa Tau by those who knew not only my attributes but my faults as well!

To you, Mom and Dad, again I say be proud of your sons. They are all gentlemen whom I have learned to love and am extremely happy to have known. Our home shall always be open to each of you.

Peggy Putnam

---

### General Chairman of 1959

#### Alumni Day Is Henry Rohr

Henry C. Rohr, *Southern California*, who served on the 1958 national convention committee, was general chairman for the May 1959 Alumni Day at his university.

A Pasadena attorney, Rohr is currently district justice of Phi Alpha Delta law fraternity with jurisdiction of the fraternity's chapters in Southern California and Arizona. He is government appeal agent for the Hollywood draft board, and office which came to him by presidential appointment upon nomination by the governor. He is concluding a term as chairman of the board of the Los Angeles Breakfast Club.

---

### Walter Ainsley Heads Detroit Research Office for Sinclair

Walter G. Ainsley, *Miami*, is in charge of the new Detroit research office set up by Sinclair Research Laboratories, Inc., to maintain a closer research liaison with the automotive industry.

Prior to his new assignment, Ainsley was Sinclair's director of engine laboratories, a division of Sinclair Research at Harvey, Illinois. His new duties will include keeping abreast with automotive industry engineering and studying new engine developments as they relate to fuel and lubricants.

## Carl Peets Is Elected Counselors' President

Carl O. Peets, *Michigan State*, was elected president-elect of the American School Counselor Association, a division of The American Personnel and Guidance Association, at the recent annual meeting in Cleveland.

Peets is a counselor in Walnut Hills High School, a public college preparatory high school in Cincinnati, Ohio. Last Year TIME magazine listed Walnut Hills High School as one of the top 38 high schools in the country on the basis of merit scholarship winners.

Prior to this position, Peets was director of guidance in the schools of Sikeston, Missouri, a position he took after receiving his Masters Degree in counseling and guidance at Michigan State in 1951. He and his wife, Doris, live at 3549 Glen Edge Lane in Cincinnati.



Carl O. Peets, Michigan State

## Darrall Imhoff Stars as California Wins 1959 NCAA Basketball Championship

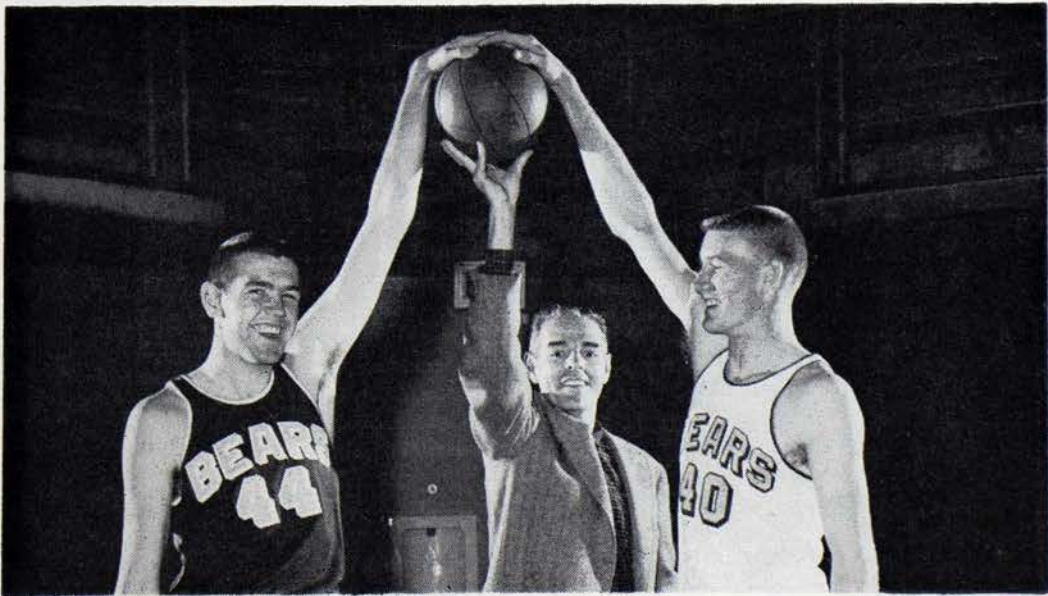
Other than the fact that he is probably twice as tall, Darrall Imhoff, stellar center on California's national champion basketball team, looks very much like the boy next door. In all probability, however, he plays basketball about twice as good as the boy next door, too. For this good looking Phi Tau with the blonde crew cut is the tallest cager in the history of California basketball—6' 10".

Although he looks like a clean, red-blooded All-American boy this year, by next year he easily could be an All-American basketball player. His improvement in the short span of one year has been phenomenal, and he hasn't neared his potential, according to experts on basketball talent.

Basketball at California has been spelled P-H-I T-A-U for a number of years. In 1957 when the Golden Bears won their first of three consecutive Pacific Coast Conference titles under Coach Pete Newell, Duane Asplund, 6' 7" center, and presi-

dent of Nu chapter, was the "big man" needed to do the job. Don McIntosh, 6' 6" forward on that team, was voted the Most Valuable Player on the 1958 PCC championship team because of his sterling play at center replacing the Big Swede, Asplund. Earl Schneider, 6' 6" forward, and a Darrall Imhoff were both sophomores on that team.

Probably the most important Phi Tau in the California basketball picture, however, is handsome Pete Newell, California's capable, well liked coach. Considered to be one of the outstanding defensive geniuses in the country, Pete brought fame to California with a stingy defense (the Bears had the best defensive record in the US this season) and a perfectly conditioned and smoothly coordinated group of young men. Had the voting for Coach-of-the-Year honors been made after the NCAA finals, instead of before, there is no doubt that Pete Newell would have been given the honor.



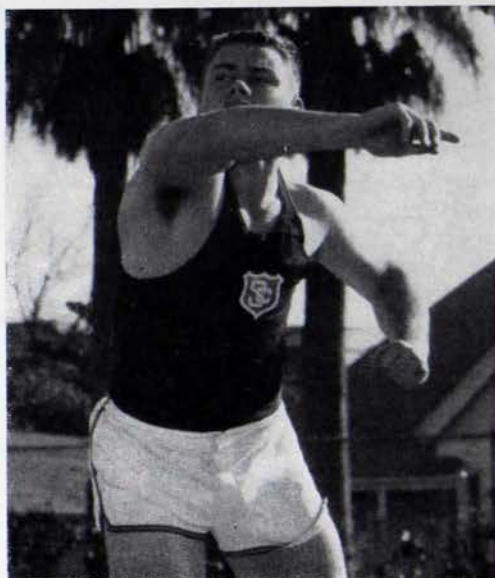
Smiling Coach Pete Newell, California, and Darrall Imhoff, California, (right) with Dick Dougherty. It was Imhoff who scored the winning shot to give the Golden Bears the NCAA championship. Imhoff was voted Most Valuable Player in the tourney.

## Southern California's Davis Is Number Two Man For U. S. Team in Shot Put Event

It took an "ear-shattering grunt" and a Herculean effort to keep Dave Davis, *Southern California*, from the shot-put victory in the recent highly publicized track and field meet between the United States and the Soviet Union. As it was, Davis ranked second to Parry O'Brien.

Leading until O'Brien's final throw, Davis who consistently betters 60 feet, was leading the field with a toss of 61 feet 10 3/4 inches: It was in his final effort that O'Brien achieved a throw of 63 feet 2 1/2 inches to win the event and to break his own world record by one-half inch.

Davis, who is 22 years of age, is an undergraduate at the University of Southern California and was initiated at Pi chapter on February 23, 1958. He is coached by Jess Mortensen, an alumnus of Pi, and makes his home at Canoga Park, California.



Dave Davis, Southern California

## Phi Kappa Tau Athletes Across the Nation

Basketball, Baseball, Track, Swimming, Tennis, Golf,  
Boxing, Hockey, Lacrosse, Soccer

### **Basketball**

PHIL STEWART, *Transylvania*.

JOHN INMAN, *Transylvania*.

STAN RULMAN, *Transylvania*.

DICK LONGO, *Transylvania*.

### **Baseball**

JOHN KIRCHOFER, *Miami*, a senior pitcher on Miami's baseball squad, whose record for the year stands at three victories against no losses. His earned run average is 0.41 and two of his victories have been shutouts.

TONY HALASZ, *Miami*, is a sophomore catcher in his first full season of collegiate ball.

MIKE OSTROWSKI, *Purdue*, power hitter for the Boilermakers, is a starter at the center field position. His hitting record early in the season included five home runs and an average of .350.

JIM LANTERMAN, *Chico State*, plays at third base and holds a batting average that is above .400.

TOM MINARCIN, *Bowling Green*, varsity catcher for two seasons, now is at first base. His batting average for college ball is .250.

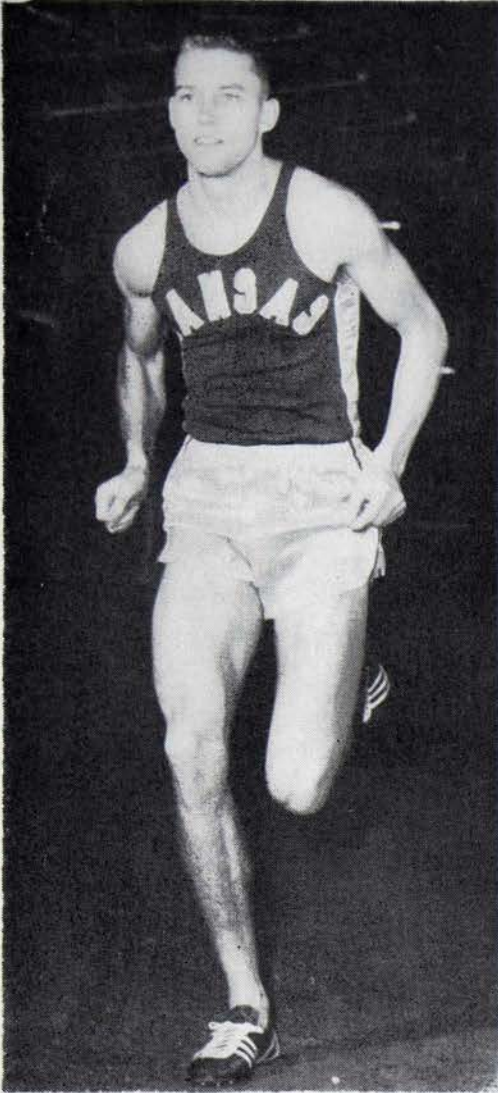
BILL WALTERS, *Bowling Green*, is the center fielder and power hitter on the Bowling Green squad. He hit .308 in 1957 and .400 last year.

BILL BODINE, *Transylvania*.

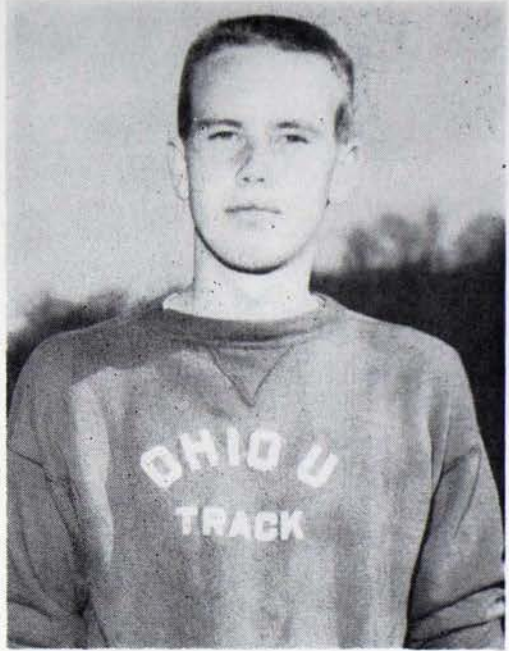
DICK LONGO, *Transylvania*.

### **Track**

FREDERICK A. DICKEY, JR., *Ohio*, is a distance man who competes in the mile, two-mile and cross country. A senior, he has been a four-year trackman and was a member of Ohio's Mid-American Championship squad in 1958.



*Robert Lida, Kansas*



*Frederick A. Dickey, Ohio*



*Tony Halasz (left) and John Kirchofer, Miami*

DON FOWLER, *Chico State*, is participating in both the discus throw and the shot put at Chico State.

GARY BURTON, *Chico State*, is the other half of the Phi Tau combination on the Chico track squad and, like Don Fowler, tosses the shot and hurls the discus.

BOB STORM, *William & Mary*, co-captain of his squad, has been Southern Conference high jump champ for the last three seasons and hold the conference and school high jump record with 6' 4".

DAN NEWLAND, *William & Mary*, is a quarter-miler who was named to Virginia's

all-state track team last season and has a record time of 49.2 seconds. He took first place in the Southern Conference Indoor meet last winter and runs anchor leg on



*James Forsythe, Ohio*



*Larry Nelsen, Idaho swimmer*



*Sam McNeill, Idaho swimmer*

William and Mary's mile relay team.

BOB LIDA, *Kansas*, in his senior year, highlighted his undefeated indoor season by winning the 440-yard dash in the Big Eight tournament. He holds the Allen Field House 220-yard dash record and posted a 46.9 in the 440 at the Texas relays. Outdoors he is a member of the 440 and 880-yard relay teams and the sprint medley, all of which hold the school records.

WARREN DAVIS, *Colgate*, is probably his squad's greatest sprinter. Hampered last year with an injury, he took seconds in both the 100-yard and 220-yard dashes in the opening meet this spring.

PHIL WILKINSON, *Colgate*, is a hurdler and high jumper who took two firsts and a second against a strong Syracuse last season.

### **Swimming**

JAMES L. FORSYTHE, *Ohio*, is a backstroker on the Ohio University swimming squad. A junior this past season, he is expected to be a bulwark of strength next season. He is a member of the 1959 Mid-American Conference 200-yard medley relay championship team.

PETER CORBETT, *Colgate*, scored nine firsts as a sprinter for a Colgate team that lost only to powerful Yale and Army squads. Impressive wins were scored by

Sophomore Corbett against Yale, Dartmouth and Amherst.

FRANK IRVING, *Rensselaer*, is the swimming manager of the water polo team at R. P. I. and has been elected a co-captain for next year's swimming team.

LARRY NELSON, *Idaho*, broke all University of Idaho records with 1:08 registered in the 100-yard backstroke.

SAM MCNEILL, *Idaho*, was the leading point-getter for the Idaho tankers and was named Most Inspirational Swimmer.

**Tennis**

GENE DOO, *Colgate*, is a sophomore and holds down one of the top three spots on the Colgate tennis squad. He ranked number one on last year's frosh squad.

DAVE KREGEL, *Colgate*, was undefeated in doubles play at mid-season.

RICK JANTZ, *Ohio*, plays first or second man on the Ohio University tennis squad.

PHIL STEWART, *Transylvania*, holds down number one position for Transylvania.

JOHN INMAN, *Transylvania*, ranks number three on the Transylvania tennis squad.

STEWART GATEWOOD, *Transylvania*, is the third member of Theta on the tennis team.

**Golf**

BILL TURNER, *Ohio*, was a member of Ohio University's 1958 conference championship golf squad and is a regular this season.

DOW REICHLEY, *Ohio*, also was a member of the championship team of 1958 and is participating this spring.

**Boxing**

BILL NEGRO, *Miami*, is a heavyweight who won the Cincinnati Golden Gloves title and participated in the national finals at Chicago where he reached the quarter-finals. A finalist in the New Jersey Golden Gloves tourney in 1953-54, he went on to win the Marine Corps regimental heavyweight title while on Okinawa and the all-service title. In 59 bouts, he won 54, knocking out 28 opponents.

**Hockey**

RICK JANTZ, *Ohio*, who also is a member of Ohio University's tennis squad, is on the first defensive line of the hockey squad.

**Lacrosse**

AL FINKE, *Rensselaer*, is finishing his second spectacular year in midfield on the



William Turner, Ohio, with Coach Kermit Blosser

varsity lacrosse squad.

**Soccer**

JIM TAYLOR, *Colgate*, lead his soccer team in scoring this season with eleven goals and earned national recognition by being named Honorable Mention on the All-American team. He is a member of the All-New York State squad and Honorable Mention All-East.

PHIL WILKINSON, *Colgate*, is a three year man in soccer.



William Negron, Miami

## NEWS OF THE OFFICIAL FAMILY

## ROGER W. VAUGHN

Roger W. Vaughn, *Illinois and Georgia*, began work in August as a field secretary for Phi Kappa Tau. Roger joins the official family as the twenty-second field secretary in the history of the fraternity and comes with a wealth of experience.

Initiated on February 20, 1954, at Zeta chapter at the University of Illinois, he was active in the affairs of the chapter and in its extracurricular activities. He spent two years at the University of Georgia where he served as a direct representative of the national fraternity and did excellent work in strengthening Beta Xi chapter.

After beginning graduate work at Georgia in psychology, he entered the Army where his academic experience was utilized in testing. He was released in May, 1959, and worked in Abilene, Texas, before coming to Oxford in August.

## TOM K. SIEG

Tom K. Sieg began his duties as field secretary for Phi Kappa Tau in August after a year's graduate study in psychology at the University of Nebraska which followed his graduation from Nebraska Wesleyan in 1958.

An outstanding undergraduate leader, Tom served Upsilon chapter as pledge president, social director and a member of the rush committee. He participated extensively in campus affairs and served on the Campus Leadership Committee, Campus Orientation Group, and as reporter and circulation director for the newspaper. He was senior class secretary and treasurer and now is permanent class agent for alumni affairs. In 1958, he was named outstanding fraternity man on campus.

## WILLIAM F. DANIEL

William F. Daniel, *Florida*, has been named domain chief of Domain IV, replacing Casey Britt who has moved to Washington, D. C. Bill's chapters are Florida, Florida State, Miami, Auburn, Mississippi State and Mississippi Southern.

Bill was president of the Student Body at the University of Florida. He is an attorney and lives in Tallahassee, Florida.

## HAROLD E. ANGELO

Harold E. Angelo, a former field secretary and currently a member of the National

Council, has accepted the position of dean of men at the University of Colorado in Boulder, Colorado. He will begin his duties this fall. He has been the assistant dean of The Amos Tuck School of Business Administration, Dartmouth College, Hanover, New Hampshire.

## C. M. BRITT

Carryl M. (Casey) Britt, elected to the National Council at the 1958 convention, has resigned his position as vice president of Southern Airways to accept a position as vice president of General Aircraft and Leasing Company, Inc., Barr Building, 910 Seventeenth Street, N.W., Washington 6, D. C.

## FRED HALL

Fred Hall, a member of the National Council, and former governor of the State of Kansas, has taken an executive position with Aerojet General Corporation in Sacramento, California.

## ROGER J. BELL

Roger J. Bell, who became a field secretary on January 1, 1958, after completing a tour of service with the Army, gave up his position with the fraternity in May. He took a position in the purchasing department at Lockheed Aircraft in Los Angeles and was there until moving to Seattle, Washington, in late August to accept a position as assistant dean of men and adviser to fraternities at the University of Washington.

## CHARLES J. COOLEY

Charles J. Cooley, who served as field secretary for the past year, left his position on June 1, 1959, to become college recruiting coordinator in the Industrial Relations Department of Food Machinery and Chemical Corporation, 161 East 42nd Street, New York 17, New York. He makes his home at 387 West End Avenue, New York 24, New York.

## JACK L. ANSON

Jack L. Anson, editor of *The Laurel* and assistant secretary, was elected vice president of the College Fraternity Editors Association at its annual summer meeting in July. He had previously served as secretary-treasurer, program chairman and a member of the executive committee.

## Chapter Eternal

IVAN R. AMERINE, *Ohio*, died on December 26, 1958. An early member of Beta chapter, he had been engaged in Ohio public school work until his retirement. He made his home in Worthington, Ohio.

STANLEY K. BERNARD, *Auburn*, died on October 11, 1957, as the result of an automobile accident. He had lived in Columbia, South Carolina, since his undergraduate days in 1932.

HERBERT DUANE CARTER, *Illinois*, died on May 20, 1959, after suffering a heart attack. Since 1941 he had been with the Harshaw Chemical Company in Cleveland, Ohio, where he headed the company's department of ceramics. Graduated from Illinois in 1922, he made his home in Shaker Heights, Ohio.

MAHLON O. COOK, *Purdue*, died on June 12, 1959, after suffering a heart attack. A charter member of Lambda chapter at Purdue University, he had lived for several years in Alamogordo, New Mexico.

OLIVER P. CLUTTS, *Ohio*, has been reported as deceased by the Post Office. A charter member of Beta chapter who was graduated in 1913, he had resided in Greensboro, North Carolina, for a number of years before moving in 1954 to Circleville, Ohio, where he lived at the time of his death.

H. LEROY EMRICH, *Franklin & Marshall*, died in 1959 according to information received at The Central Office. He was initiated at Xi chapter in 1938.

CHARLES ROBERT FAY, *Purdue*, died in July, 1959. He was a vice president of the Pittsburgh Plate Glass Company and had lived in Pittsburgh since 1946. Graduated from Purdue in 1922, he was a mechanical engineer.

DONALD L. HOOVER, *Maryland*, was killed when his Air Force jet plane crashed in the Atlantic Ocean on April 8, 1959. A 1955 graduate, he served as vice president of Beta Omicron, chairman of Harmony Hall and was chosen as the Outstanding Senior in 1955. He was commanding officer of the Arnold Air Society and commanding officer of Pershing Rifles.

LAWRENCE A. KAUFFMAN, *Ohio State*, died on June 18, 1959. For several years he had been

a member of the faculty of the College of Agriculture at Ohio State University.

M. LUTHER LEYMEISTER, *Franklin & Marshall*, has been reported by the Post Office as deceased. A physician and president of Xi chapter in 1931, he lived in Reading, Pennsylvania.

CLELAND G. MARRIOTT, *Washington*, was killed in action during World War II, according to recent information received by Alpha Pi chapter. A resident of Seattle, he served with the Air Corps.

WILLIAM E. MCVEY, *Ohio*, a member of the United States House of Representatives, died on August 10, 1958. At the time of his death, he was serving a fifth term as the representative of the Fourth District in Illinois and made his home in Harvey, Illinois.

Congressman McVey graduated from Ohio University in 1916 as a member of Phi Beta Kappa and at the head of his class. He later earned a doctor's degree and was a teacher in public schools and college. For three years he was on the faculty at Ohio and later was professor of education in the Graduate School at DePaul. During 1943 and 1944 he was president of the North Central Association of Colleges and Secondary Schools, an organization covering twenty states. He traveled extensively in Europe and the Orient and was a contributor to numerous magazines.

FORREST HARROLD MUNGER, *Florida*, an attorney in Jacksonville, Florida, has been reported as deceased since 1951. He was a 1930 graduate of the University of Florida.

CHARLES WRIGHT PERSONS, *Florida*, who was initiated in 1926 has been reported as deceased.

HERBERT B. POTTER, *Washington*, has been reported as deceased by Alpha Pi chapter.

CHARLES DAVID SAUL, *Muhlenberg*, has been reported as deceased.

L. SHIMER SERFASS, *Lafayette*, died on December 24, 1958. Dr. Serfass, a lifelong resident of Easton, Pennsylvania, was president of Alpha Omicron chapter in 1930. Just after World War II, he led the reactivation of his chapter and secured the present house from the College for chapter use.

LAURENCE V. SMITH, *Miami*, died on August 8, 1959. A 1934 graduate of Alpha, he was an executive with The Pure Oil Company in Chicago at the time of his death.

JAMES PATRICK (Pat) SULLIVAN, *Kent State*, died on February 15, 1959, after suffering a heart attack at his home in Cuyahoga Falls, Ohio. He was a charter member of Beta Mu chapter and active in alumni affairs. He worked as a salesman for the C-A-B-Y Transportation Company.

DONALD DEWEY WYNN, *Miami*, was killed in the crash of a jet bomber on June 2, 1959, near Helmet, California. Lt. Col. Wynn, a 1940 initiate at Alpha, commanded the craft which crashed while on a landing approach. Stationed at March Air Force Base, he had flown 30 combat missions during World War II and had been recalled to active duty during the Korean Conflict during which he was based in Japan. Military services and interment were in Arlington Memorial Cemetery.

### Pat Thomas Almerico

Pat Thomas Almerico, *Kent State*, was erroneously reported as deceased in the Fall, 1958, issue of *The Laurel*. According to information received from Jim K. Heilmeier, *Kent State*, he is serving with the United States Army in Germany.

### Annis, Miami, Is Named Vice President of Paper Company

Harold M. Annis, *Miami*, has been named vice president, research and development, of the Oxford Paper Company, whose executive officers are in New York City.

The position is a new one, its creation emphasizing the importance of research and development in Oxford's growth. He has been with Oxford for 22 years, serving as technical director, manager of sales service, manager of product development and assistant to the vice president in charge of manufacturing.

### Centre Chemist Is President

Dr. Richard I. Rush, *Centre*, formerly the adviser to Delta chapter, is president of the South Central Independent College Association of Chemists. Dr. Rush heads Centre's chemistry department, one of the few departments in small colleges that is conducting research work for a large industrial corporation.

### Chamber of Commerce Manager

Fred P. Chatworthy, *Southern California*, has been named manager of the Englewood, Colorado, Chamber of Commerce.



These are the Phi Taus who attended the 1959 Domain Conference for Domain 7 held at Nebraska Wesleyan on April 3 and 4, 1959.

## Contributors to the 1958-59 Development Fund

## AKRON

Allen M. Arbogast  
Raymond C. Bliss  
William Boles  
Enslin C. Brown  
Paul R. Chapman  
Harding S. Christ  
James S. Gross  
Robert L. Hively  
Lester N. Jenkins  
Morris B. Jobe  
Robert J. Lacey  
Byron H. Larabee  
Donald K. McGaughey  
William D. Plant  
Richard W. Staiger  
William Lee Starcher  
William H. Washer

## AUBURN

William H. Appich, Jr.  
Robert E. Clark  
Ben H. Dyer  
H. Ray Evers  
Gordon L. Flynn  
Gordon H. Griffith  
Harvey W. Parker, III  
Henry P. White  
W. Carl Wilcoxson

BALDWIN-  
WALLACE

Holland L. Browne, III  
Gordon M. Burnham  
James R. Espenshied  
Thomas Grant  
Allan Lang  
George A. Leininger  
Paul R. Matthews  
Herbert F. Miller  
Albert J. Werner, Jr.

## BETHANY

William J. Bannen, Jr.  
Robert F. Cory  
J. W. Coughenour  
Harry L. Ice  
Elmer L. Jackson  
Ernest L. Korb  
Andrew McDonald  
W. H. McKinney  
Lawrence G. Patterson  
George T. Phelps

J. Allan Pritchett

W. Arthur Rush

J. Rist Stimmel

## BOWLING GREEN

James G. Annos  
Ronald E. Cashen  
Russell A. Hall  
Bennett H. Litherland

## CALIFORNIA

Clarence N. Ahlem  
Ainsley M. Carlton  
Norman E. Dole, Jr.  
Howard C. Ellis  
Milton H. Esberg, Jr.  
Jeryl R. Fry  
John S. Hall  
Robert G. Leetch, Jr.  
Norman M. Lyon  
Lorel W. Meyers  
Paul N. Newman  
Donald A. Pearce  
William D. Rankin  
Walter B. Smith  
Stanley L. Stetson  
Robert G. Toth  
Lawrence N. Tyler  
William G. Whelan

## CASE

William L. Aldrich  
Paul A. Barrett  
Alvin W. Brooke  
Thomas R. Cadwell  
Thomas L. Cooke  
Henry C. Christian  
Pete Delvigs  
Harry L. Ebert  
James N. Hanson  
Norman Hoertz  
Elmer J. Kuhn  
Kermit D. Kuhl  
Tom E. LeSueur  
William T. Mansfield  
Richard L. Pocker  
Joseph D. Poxson  
Harrison C. Pulsifer  
Howard J. Rowe  
Brown W. Saveland  
Ronald L. Spetrino  
Gust Z. Stern  
Carl E. Sutherland, Jr.

## CENTRE

Stanton F. Bahr  
Robert B. Ball  
Clayton J. Barker  
S. Frank Cox  
Rudolph Gilcher  
T. K. Lewis  
William H. Logan  
Hugh L. Nevin  
W. L. Newman

## CHICO STATE

Clyde A. Bowman  
Floyd M. Emerson  
Robert E. Peek

## CINCINNATI

Robert W. Brown

## COE

Denver H. Adams  
L. William Brown, Jr.  
John N. Burnside  
Will C. Davis  
Graham E. Harris  
Robert F. Preston  
Edmund B. Shaw  
John E. Sidner

## COLGATE

Jack L. Anson  
Russell R. Billings  
W. J. Browning, III  
Frank J. Bruno  
Robert A. Davies, III  
Edward T. Davis, Jr.  
Raymond I. Dawson, Jr.  
Watson Fenimore  
Alfred J. Freisem  
Thomas M. Iiams  
John D. LaBelle  
Richard J. Lyman  
Leonard C. Lang  
Anthony P. Nicosia, Jr.  
Lloyd Sleton  
David L. Sparling  
Donald E. Tobin  
G. A. Williams, Jr.

## COLORADO

Jon F. Abrahamson  
John G. Anderson

Fred S. Bartlett

Donald J. Breuner

George R. Burnett

Archie C. Camp

William Chocas

David E. Clark

William E. Collins, II

Lewis M. Culver

Robert A. Davis

Louis Degen

W. G. Edwards, Jr.

A. G. Finlay

William J. Fisk

Oliver W. Gushee, Jr.

William C. Haase

Robert F. Heffernan

Richard F. Hogan

Emerick J. Huber, Jr.

Paul J. Kane

William B. Lewis

Robert A. Mammano

Edward M. Paullin, Jr.

Carl M. Russell

Robert Stettler, Jr.

Robert M. Tenery

Samuel B. Wasson

James B. Wines

Harold E. Zimmer

COLORADO  
STATE

Thomas G. Baber  
Lyndon C. Brown  
James E. Cambria, Jr.  
Bert W. Casselman  
Earle Collart  
Robert W. Davis  
J. Collins Gadd  
Franklin F. Johnson  
Fred D. Legler  
Roy A. Nipko  
Harold H. Short  
Russel J. Stewart  
Louis D. Visintainer

## CORNELL

George N. Brown  
William F. Burrows  
Philo D. Clark  
Ray A. Clarke  
John P. Crosby

# More Contributors . . .

Robert J. Gairing  
William G. Genne, Jr.  
Ira Hand, Jr.  
George M. Irely  
Francis P. Keiper  
Lewis M. Leisinger  
James A. Moore  
Charles V. Parsell  
Edmond A. Perregaux  
Ernest V. Price  
Jerry A. Ruth  
Gert H. W. Schmidt  
Robert S. Stoll  
Howard C. Wikoff

## DELAWARE

George H. Calhoun  
H. Wallace Cook, Jr.  
H. Wallace Cook, Sr.  
Alfred H. Dickinson  
Owen Evans  
Lawrence C. Elliott  
George H. Hall  
George M. Harlan  
Ralph W. Jones  
Samuel H. Macrum  
H. Lawrence McClure  
John F. S. McMullan  
Arthur L. Perry, Jr.  
PETER W. REITER  
John W. Scott  
Lewis M. Woodward  
William C. Wortman

## FLORIDA

C. Guthrie Babcock  
Albert Bassett  
Egbert R. Beall  
Ernest T. H. Bowen  
Roy H. Clarke  
Henry L. Connor  
Chester S. Deigaard  
Robert P. Duntz, Jr.  
Richard W. Ervin, Jr.  
William S. Frates  
Leroy H. Gross  
William F. Haselmire  
Richard Holland  
James R. Holtsclaw

Vernon Jones  
Raymond R. Lord  
Solon F. O'Neal, Jr.  
Richard S. Pinder  
Oscar E. Reeder  
Gerald Smith  
Charles D. Stidham  
Thomas L. Tatham  
Henry H. Taylor, Jr.  
Harold B. Wahl  
Edward Waldron

## FLORIDA STATE

Syde P. Deeb  
James H. Gosnell  
C. E. VanMiddlesworth  
Ira F. Wilson

## FRANKLIN & MARSHALL

John D. Braught  
John S. Cowan  
P. T. Gantt  
Stephen T. Heinaman  
David R. Meehan  
Wayne R. Parmer  
L. Lamar Sharp  
Charles D. Spotts  
Harold T. Stryker  
Elmer F. Toth  
Stewart E. Warner  
Donald E. Wentz  
Benjamin M. Witmer  
Irwin H. Yoder

## GEORGIA

Robert L. Lane

## GEORGIA TECH

Julian N. Buchanan  
Thomas W. Donaldson  
Robert S. Duggan, Jr.  
Lewis F. Easterlin, Jr.  
Thomas J. Elrod, Jr.  
James H. Fowler  
F. E. Hankinson, III  
Edwin L. Hanna  
Anthony S. Hendrick

Clarence C. Johnson  
George M. Johnson  
John F. McMillen  
Claus B. Mettenheimer  
Henry W. Moore  
Donald A. Nordal  
Richard E. Rabe  
James H. Suddeth  
Hoke S. Woodruff

## HOBART

Howard H. Gowen  
John A. Hadley  
Edwin Kriegsman, Jr.  
John J. Reinheimer

## IDAHO

Hugh R. Swanstrom

## IDAHO STATE

Leander H. Harral

## ILLINOIS

Philip A. Anderson  
Guy T. Avery  
Edgar L. Bannister  
William J. Barmore  
Edwin A. Bebb  
W. Sereno Bodman  
Bruce K. Brown  
William S. Budd  
Howard C. Burleson  
Charles R. Cook, Jr.  
Fred H. Corray  
George B. Elliott  
Harold E. Fitzgerald  
Frederick R. Fletemeyer  
Timothy J. Gallivan  
Gordon E. Gray  
J. Thomas Hastings  
Ralph J. Herrcke  
Lyle F. Kaapke  
Frank A. Laraia  
Phillip H. Miller  
Hollis W. Price  
Benjamin Schweitzer  
Norris O. Taylor  
Robert F. Williams  
Leland E. Yeager

## INDIANA

Jon T. Gardner  
John H. Porter  
Richard C. Starr

## IOWA STATE

James D. Alexander  
Len R. Beath  
F. E. Brown  
Carlyle G. Caldwell  
William P. Cummings  
Marlon L. Ellison  
Darwin H. Huff  
Merlyn K. Johnson  
George A. Mark  
Donald E. Reynolds  
Robert G. Riedesel  
Wayne H. Riser  
Russell E. Saupe  
William E. Saupe

## KANSAS

Robert H. Badgley  
W. Gordon Campbell  
Courtney Y. Sloan  
Robert R. Vetter

## KANSAS STATE

Lucious N. Butler  
Ralph H. Draut  
Vern W. Johnson  
O. Keith Lassen  
Darrell S. Steele  
John T. Tew  
Temple F. Winburn

## KENT STATE

Anthony Suso

## KENTUCKY

William M. Baker  
Marshall Barnes  
Arthur J. Bradshaw  
Harold L. Brentlinger  
John F. Casner  
Otto V. Elder  
Ernest W. Johnson  
Paul B. Kiel  
Robert E. Maloney  
Charles Walte, Jr.

Ralph B. Wright

Paul G. Parker

Karl I. Handley

MICHIGAN

LAFAYETTE

MARYLAND

John W. Heisey  
William A. Hopkins

Walter C. Abendroth  
Richard C. Bek

Frank R. Barnako  
H. Gress Hanna  
George J. Hintenburger  
Elmer E. Huhn  
Eugene C. Preston  
Robert N. Reifsnyder  
James E. Segraves, Jr.  
Edward G. Seifert  
John A. Speece, Jr.  
Irwin M. Stewart

Littleton MacDorman

MIAMI (FLORIDA)

Carl A. Johnson  
Charles B. Keach  
Howard C. Larick  
Richard A. Lennox  
Robert D. Lightner  
Ernest N. Littleton  
George Lowrey  
Donald H. MacDowell  
Robert M. Maynard  
Ralph L. McCreary  
Robert L. Meeks

George S. Bradley  
Frederick C. Bowdle  
Robert A. Carr, Jr.  
Horace C. Duncan  
George W. Eyster  
W. Paul Hendershot  
Edward T. Hile  
Robert J. Hutton  
Keith C. Kepler  
Wilford G. Kilpatrick  
Norman K. Krecke  
Frederick Marin  
Donald M. Monroe  
Roland R. Nette  
Donald M. Ralston  
Robert E. Reynolds  
Robert J. Ridgway  
James C. Roberts

962 Alumni Give \$5,186

Mark B. Weisburger

MIAMI (OHIO)

Walter J. Miller  
Kenneth G. Morriscal

Henry W. Schmidt  
Carleton D. Sherburne  
Joseph B. Tate  
Norman K. Trackett  
Herbert E. Trapp  
Edward L. Warner, Jr.  
Donald B. Waite  
William S. Wells

LAWRENCE

Richard F. Bahr

Harold D. Nichols  
Hugh C. Nichols

Phillip Alley  
Robert H. Behling  
Earl W. Blank  
Herbert Brooks  
Gordon R. Bush  
Gordon Closway  
Paul E. Conrads  
William J. Edmunds  
Carl H. Engler  
George E. Hall  
William E. Hamlin  
Francis E. Herrell  
Robert Krell  
Thomas O. Krueger  
Barton W. McNeil  
Overton B. Parrish  
R. Paul Rosenheimer  
John H. Runkel  
Robert A. Strobel  
William Swanstrom  
Robert L. Woodard

Robert C. Bates  
Donald E. Baxter  
Curtis F. Bellamy  
George E. Booth  
Taylor A. Borradaile  
William H. Braun  
Raymond F. Breedlove  
Joe R. Butterfield  
Robert D. Carroll  
Howard Chabot  
Richard Chamberlain  
Harry R. Crauder  
Harry O. Davidson  
Robert W. Edmiston  
Howard G. Eley  
Thomas W. Ellison  
Kermith K. Fligor  
E. Thomas Flinn  
Albert B. Flory  
E. Massey Foley  
Wilson L. Ford  
Harry E. Franz  
James R. Frazier  
Gerald E. Frazier  
Elmer Frech  
Alfred H. Gansberg  
Roland M. Gard  
Fred B. Garrod  
Charles Gerstenmaier  
Arthur W. Gottmann  
Albert C. Graf  
John H. Griffith

Valentino Ottaviani  
Anthony Poss  
Charles E. Rogers  
Jack D. Rogers  
Arthur F. Schramm  
Clifford D. Sheard  
John E. Sheard  
William H. Shideler  
Wilbur J. Shoemaker  
George M. Short  
Wilford F. Sizelove  
Gene B. Smith  
Roger C. Smith

MICHIGAN TECH

Alvin J. Brodeur  
Theodore Reiss

LONG BEACH

John W. Cleveland  
Raymond Gillingham  
Robert A. Hoting  
Keith W. Lawson

John G. Snyder  
Kenneth E. Somerlot

MICHIGAN STATE

William W. Barber  
Richard W. Cook  
Milton F. Dickman  
Charles F. Featherly  
Russell N. Jones  
Robert L. Longyear  
Edward J. Morrison  
Carl O. Peets  
Richard Rigg  
Joseph M. Rizza, Jr.  
Max H. Smith  
William H. Smith

LOUISVILLE

Montrose D. Justice

Artho E. Staley  
C. Roger Stegmaier

Charles R. Stroble  
Marion R. Swisher

Edgar J. Townsend  
Ralph K. Ulrich

Joseph F. Vargo, Jr.  
Ernest H. Volwiler

Robert A. Whisner  
W. McDill Wright

Donald D. Wynn  
William H. Yensel

James T. Young  
Richard J. Young

Roman J. Zipfel  
Alvin C. Zurcher

MIDDLEBURY

William F. Geenty, Jr.  
Samuel B. Patch

# And More . . .

Carey T. Smith

## MISSISSIPPI STATE

H. E. Angelo  
Joseph D. Bristow  
Billy McCann

## MOUNT UNION

Robert L. Ailes  
Lyman Brownfield  
Chester L. Buxton  
Roy H. Clunk  
Wilbur J. Dimit  
Charles S. Gallaher  
William D. Heaston  
Edward G. Meiter  
M. Earl Newcomer  
Harley J. Noble  
Dale S. Porter  
Charles L. Riley  
Earl J. Schwab  
Clifford D. Shields  
Guy A. Slusser

## MUHLENBERG

Benjamin Bacharach  
Kenneth I. Boyer  
Walter H. Brackin  
Donald G. Carpenter  
Harry P. Cressman  
Frang DeLong, Jr.  
Luther F. Gerhart  
John C. Gosztanyi  
Franklin L. Jensen  
G. Herbert Koch  
George T. Miller  
Russell W. Moyer  
Otto F. Nolde  
John P. Schaffner  
Daniel J. Schlegel  
Virgil C. Scott, Jr.  
John V. Shankweiler  
Scott W. Skinner  
Alfred H. Smith  
Bruce D. Smitheman  
Clifford H. Trexler  
Harry B. Underwood

Paul M. White  
Armon M. Williams  
Charles R. Witmer  
John M. Wotring

## NEBRASKA WESLEYAN

Louis B. Austin  
Lyle Briggs  
Linn DeWald  
John R. Dunning  
Warren A. Guthrie  
Larry L. Luhrs  
Walter J. Monia  
Warren H. Parker  
Dwayne E. Price  
Richard W. Ricker  
Darrel E. Seng  
Everett J. Simonds  
Charles T. Streeter  
Harry A. Taylor  
Oscar Wiberg

## NEW MEXICO STATE

Herbert M. Edde  
Henry L. Hendon  
Richard Pugh  
James B. Tuttle

## NEW YORK

William H. Angelbeck  
B. F. Biemann  
F. X. Beubendorf, Jr.  
Robert A. Donald, Jr.  
Andrew F. Haiduck  
George J. Kraft  
Herbert Kruttschnitt  
C. B. Lockwood  
C. E. Pilnacek  
H. D. Rohrssen  
C. E. Schwendler  
W. T. Schwendler  
Edward Simone  
Francis B. Thompson  
Frank E. Wickham

## NORTH CAROLINA STATE

Conrad D. Bliss  
John E. Garrett  
Donald E. Hamilton  
Carl R. Harris  
M. H. Hicks, Jr.  
Lemuel C. Robertson

## OHIO

Robert J. Barrett, Jr.  
Frederic W. Breed  
Horace E. Cromer  
Harlan J. Dickerson  
Oscar L. Dustheimer  
Robert B. Egan  
Ralph C. Frey  
Walter Gamertsfelder  
Joseph H. Giesecke  
Vernon H. Ginn  
Fred B. Goddard  
John D. Good  
P. F. Good  
Brandon T. Grover  
Eugene E. Haney  
Charles E. Hawkins  
William G. Heck  
George B. Hooper  
C. Paul Hutchison  
Dana S. Jones  
Robert E. Joyce, Jr.  
F. C. Juergensmeier  
William A. Kincaid  
George J. Kindsvatter  
Henry M. Oates  
Earle W. Phillips, Jr.  
Donald J. Reppa  
Robert W. Schlenker  
John D. Schneider  
Charles E. Skinner  
Harry C. Snyder  
William B. Weaver  
Richard B. Werner

## OHIO STATE

C. Thomas Anania  
Ray A. Bichimer  
Vincent P. Blair  
James E. Banta  
John L. Bartholomew  
Robert R. Brown  
Arthur L. Brenneman

Frederick L. Cummings  
Donald H. Ebright  
Kenneth L. Ervin  
Everett D. Farr  
David D. Glick  
David L. Haskell  
Harold L. Hays  
Donald V. Heckman  
Hudson Hillyer  
William H. Hillyer  
Justin E. Jordan  
Charles C. Koterba  
Robert W. MacDonald  
Martin M. Mansperger  
Thomas P. Marinis  
R. Kent Martin  
J. H. McNinch, Jr.  
John W. Miller  
Owen T. Moorhead  
Frank R. Musrush  
John S. Nagy  
Donald F. Orth  
Selson S. Parker  
Wesley R. Pelling, Jr.  
Robert L. Perdue  
Smith L. Rairdon  
J. Gordon Russell  
Frederick M. Sage  
David A. Schaublin  
Ralph H. Sipple  
Donald L. Slyh  
Robert G. Smith  
Russell E. Steele  
Maurice E. Stilwill  
Karl W. Stinson  
Robert J. Watkins  
Harry C. Webb, Sr.  
Robert V. Westlake  
Peter W. Young

## OHIO WESLEYAN

Charles P. Bowdle  
J. Merle Brill  
Claire A. Connolly  
Sheldon C. Gray  
Earl M. Logan  
Phillip S. Parks  
Clyde A. Sluhan  
Elliott D. Sluhan  
Howard V. White

## OKLAHOMA STATE

Thomas A. Gilley

THE LAUREL OF PHI KAPPA TAU

Richard L. Kugler, Jr.  
F. L. McKinley  
Clyde D. Nevins  
Lorren L. Perdue  
A. L. Rose  
Howard L. Scharf  
George S. Soule

OREGON STATE

Robert D. Affolter  
Robert J. Baker  
Donald D. Barnard  
Arvin Crose  
Harold DeVoe  
Joe D. Haynes  
Dwight I. Highee  
Lenn C. Holman  
James W. Jarvis, Jr.  
Leonard F. Larson  
James R. Libby  
Bruce F. Pickett  
Trevis Reynolds  
Stanley E. Spurgeon

PENNSYLVANIA

John Baxter  
Charles W. Bohmer, Jr.  
Carl E. Bohn  
Barlow Burke  
John M. Bushey  
Samuel S. Childs  
Perry Frank  
John L. Hansell  
David H. Harshaw  
Alan G. Middleton  
Edson S. Otwin  
Walter A. Roth  
Claude K. Scheifley

PENN STATE

Harold M. Benner  
Charles D. Blauch  
John E. Cleary  
Robert H. Clausen  
L. Kenneth Cook  
Lynell R. Cooper  
William S. Creighton  
Forrest L. Cropp  
Harry B. Davenport, Jr.  
Robert P. Hacking  
John B. Harbaugh  
William G. Hintz, Jr.

H. Allen Houston  
Dean E. Kennedy  
Robert H. Klein  
Harry G. Leonard  
Andrew J. Logan  
Joseph L. Maguire  
J. William McCann  
Amandus O. McClellan  
William H. McCabe  
William E. Miller  
Frank L. Platt  
Donald F. Rieco  
John C. Schmidt  
Walter N. Shambach  
Robert Sheffer  
Verne M. Willaman  
Donald M. Woodring  
John W. Yaag

PURDUE

Charles S. Andes, III  
Paul J. Bateman  
Curtis M. Brown  
Robert L. Bubenzer  
Raymond R. Calvert  
Robert E. Chester  
Van Buren Cones  
David M. Eckman  
Charles R. Fay  
William J. Feallock  
Robert A. Fitch  
Wilfred I. Freel  
Charles G. Garrett  
Keith L. Gilbert  
Fred J. Grumme  
Oliver J. Heacock  
Howard W. Hubbard  
Clayton R. Keyes  
Roland H. Kurfess  
Richard C. Lennox  
Walter W. Leonard  
Lawrence J. Little  
Frederick T. McDonald  
Joseph D. McDonald  
Ogden R. Pierce  
Arthur C. Ramm  
Donald L. Rich  
Richard L. Scully  
Lyle R. Willey  
Carl B. Williams

RENSELAER

Lawrence Barca, Jr.

Robert T. C. Blakely  
Robert W. Bucklin  
Russell F. Cabot  
Rossa W. Cole  
John Cunningham, Jr.  
Russell B. Davis  
Raymond A. Gibson  
Willard E. Grande  
Edward A. Geier  
Carl F. Hakewesse  
Bradley L. Jacobs  
Walter G. Kunz, Jr.  
Joseph A. Lahoud  
Daniel F. Lillie, Jr.  
Robert E. McGrath, Jr.  
David W. Merow  
Charles F. Norcross  
Frederick A. Rose  
Thomas J. O'Shea  
Stephen A. Richardson  
Charles V. Sherwood  
Charles A. Stotz  
Alfred L. Taylor

SOUTHERN CALIFORNIA

Richard M. Allen  
Bruce H. Bell  
Richard F. Bird  
Lawrence A. Blau  
Walter Bluemel  
Charles A. Bracht  
Ben G. Brewer  
Robert M. Bryant  
Howard E. Chapman  
H. Bundy Colwell  
Charles C. Cox  
Robert B. Cyr  
Clifford M. Davis  
J. Howard Edgerton  
C. J. Fremling  
Charles W. Gardiner  
Fred Hall  
Malcolm Harris  
R. Delbert Johnson  
Roy H. Johnson  
John W. Kewak  
William H. Lynn  
Brice T. Martin  
Roland Maxwell  
G. Allen Miller  
Wilber H. Miller  
Richard A. Noble  
Jerry D. Page

Henry C. Rohr  
Alvin L. Sanborn  
Chester W. Schaeffer  
Albert L. Stephens  
Richard G. Sullivan  
Arthur L. Swanson  
Vernon W. Thews  
Beach Vasey  
Frederick L. Wallace  
Hyrum S. White

SOUTHERN ILLINOIS

James Throgmorton

SYRACUSE

Wilbur A. Babcock  
Lewis K. Burnett  
Robert S. Cook  
Richard Curtis  
Bruce R. Gibbs  
David H. Kimbrell  
Harold R. Hurst  
George Messinger  
George Perrault, Jr.  
George D. Sporer  
William E. Thomann

TEXAS

Wayne M. Adam  
Leonard F. Crockett  
Andy S. Robertson  
Joe Ellis Robinson  
Rolen D. Snowden

TEXAS WESTERN

John F. Casey  
Thomas W. Hope  
James Kaster  
Crawford S. Kerr, Jr.  
Kenneth L. Miller  
Aubrey B. Pinnell, Jr.  
Marion E. Spitler  
William C. Swan  
Carl E. Webb

TRANSYLVANIA

William W. Blair  
L. M. Childers  
Joseph P. Christian  
John M. Franz  
Ben C. Frederick

THE LAUREL OF PHI KAPPA TAU

Robert B. Grannis  
Julian F. Kesheimer  
John C. May  
Vivian O. Robertson  
Maurice F. Meay  
Gene Thomas  
William White, Jr.  
Gordon H. Wilson  
Herbert D. Woodruff

Glenn M. Light  
Bruce O. McCassey  
C. Edward Quigley  
William H. Rae  
Winthrop Seelye  
Roy L. Worley

Delmar E. Wilson  
James S. Winston  
Arthur P. Zurfluh, Jr.

Walter F. Milkey  
Thomas A. Quitko  
James Radcliffe, Jr.  
George R. Royer  
Calahill M. Smith  
John C. Struges

WESTMINSTER

Leon E. Ackart  
Will Maurer, II

WASHINGTON STATE

Thure M. Ahlquist, II  
Kenneth Boring  
James P. Cannon  
J. P. Cerveny  
Ralph Clarkson  
Melvin P. Dolsan  
Kenneth V. Fletcher  
Carl M. Hansen  
Philip M. Kelly  
Edwin A. Kilburn  
Donald E. Lind  
C. F. Lindberg  
Robert F. Lonneker  
Kirk E. Williams

WEST VIRGINIA

Leonard M. Board  
G. I. Burner  
Paul C. Gates  
Robert E. Roach

WISCONSIN

Glen M. Benson  
Warren Busse  
Paul A. Elfers  
Frank J. Hebda  
Norris B. Hogenson  
Stafford O. Holle  
Alvin H. Huth  
E. Allen Kenyon  
Lyle J. Kielly  
Chester A. Obma  
Howard L. Spindler  
Bruno A. Stein  
Alvin C. Steinbach  
Morris C. Watermann  
Price R. Williams

UCLA

Robert L. Eichel  
Gerald D. Hibbs  
John D. Wiley

WASHINGTON

Sidney Adams  
Charles L. Callahan  
James W. Chase  
Clifford C. Diemond  
Charles D. Fay  
Ray F. Jones

WILLIAM & MARY

E. Thomas Boles, Jr.  
John H. Fritz  
Charles B. Fuller, Jr.  
Gordon E. Hanson  
David D. Henritze  
Edwin L. Lamberth  
David L. Metz

## CHAPTER DIRECTORY

**ALPHA—Miami University**

Tallawanda Road, Oxford, Ohio  
Resident Council President, Robert E. Jensen  
Graduate Council President, Harold D. Nichols,  
Batavia, Ohio

**BETA—Ohio University**

50 E. State Street, Athens, Ohio  
Resident Council President, Fredrick Wagner  
Graduate Council President, Herman Humphrey,  
Box 343, The Plains, Ohio

**GAMMA—Ohio State University**

141 East 15th Ave., Columbus 1, Ohio.  
Resident Council President, Dennis McFadden  
Graduate Council President, Donald Slyh, 2720 Cov-  
entry Rd., Columbus 21, Ohio

**DELTA—Centre College**

150 Maple Avenue, Danville, Kentucky  
Resident Council President, Ronald Simmons  
Graduate Council President, E. G. Guttery, 845 W.  
Lexington Ave., Danville, Ky.

**EPSILON—Mt. Union College**

1400 S. Union Street, Alliance, Ohio  
Resident Council President, Ralph Polumbo  
Graduate Council President, Robert Freshley, 735  
Devine St., Alliance, Ohio

**ZETA—University of Illinois**

310 E. Gregory Drive, Champaign, Ill.  
Resident Council President, John Melvin  
Graduate Council President, Leslie R. Bishop, 2540  
E. 73 St., Chicago, Ill.

**ETA—Muhlenberg College**

Box 39-B, Muhlenberg College, Allentown, Pa.  
Resident Council President, Kenneth W. Stewart  
Graduate Council President, Ernest H. Wallender,  
428 Beechwood, Emmaus, Pa.

**THETA—Transylvania College**

Transylvania College, Lexington, Ky.  
Resident Council President, William D. Stroker  
Graduate Council President, Jack Duncan, c/o  
Asto Metal Co., 817 Market St., Louisville, Ky.

**IOTA—Coe College**

Coe College, Cedar Rapids, Iowa  
Resident Council President, Tom Granquist  
Graduate Council President, H. Hamilton Morse,  
2625 Bever Ave., S.E., Cedar Rapids, Iowa

**KAPPA—University of Kentucky**

340 S. Broadway, Lexington, Kentucky  
Resident Council President, John H. McGehee  
Graduate Council President, William O. Boles,  
7508 Comet, Richmond, Va.

**LAMBDA—Purdue University**

516 Northwest Ave., W. Lafayette, Ind.  
Resident Council President, Val Gerstenschlager  
Graduate Council President, Blaine Osterling, 111  
Peach St., Park Forest, Ill.

**MU—Lawrence College**

206 S. Lawe St., Appleton, Wisc.  
Resident Council President, Thomas Trettin  
Graduate Council President, George C. Miotke,  
1209 W. Loraine St., Appleton, Wisc.

THE LAUREL OF PHI KAPPA TAU

- NU—University of California  
2335 Piedmont Ave., Berkeley, Calif.  
Resident Council President, James Butenschoen  
Graduate Council President, Harry R. Schroeter,  
Jr., 1815 Telegraph Ave., Oakland 12, Calif.
- XI—Franklin & Marshall College  
695 College Ave., Lancaster, Pa.  
Resident Council President, Glenn Nichols  
Graduate Council President, Franklin E. Shenk,  
248 E. Clay St., Lancaster, Pa.
- OMICRON—Pennsylvania State University  
Fairmount Ave. & Garner St., State College, Pa.  
Resident Council President, Gilbert H. Sergeant  
Graduate Council President, Nicholas C. Scandale,  
855 S. Main St., Old Forge, Pa.
- PI—University of Southern California  
964 W. 28th St. Los Angeles 7, Calif.  
Resident Council President, James P. Mackel, Jr.  
Graduate Council President, E. M. Samelson, Jr.  
1345½ Orange Grove Ave., Glendale 5, Calif.
- RHO—Rensselaer Polytechnic Institute  
207 Hoosick St., Troy, N. Y.  
Resident Council President, Alfred K. Pinke  
Graduate Council President, Don Zeissett, 12 Reade  
Pl., Poughkeepsie, N. Y.
- SIGMA—Syracuse University (Inactive)  
Graduate Council President, Thomas J. Christoff,  
R.D. #4, McDonald Rd., Syracuse, N. Y.
- TAU—University of Michigan  
808 Tappan Avenue, Ann Arbor, Mich.  
Resident Council President, Charles Smith  
Graduate Council President, J. Cullen Kennedy,  
1820 Ford Bldg., Detroit 26, Mich.
- UPSILON—Nebraska Wesleyan University  
5395, Huntington Ave., Lincoln, Nebr.  
Resident Council President, Harvey Humphrey  
Graduate Council President, M. A. Gies, 2513 N.  
48th St. Lincoln, Nebr.
- PHI—Bethany College  
Phi Kappa Tau House, Bethany, W. Va.  
Resident Council President, Vincent Barbetta  
Graduate Council President, Alton Behm, M.D., 112  
South St., Chardon, Ohio
- CHI—North Carolina State College  
308 Horne St., Raleigh, N. C.  
Resident Council President, Aubrey T. Davis  
Graduate Council President, F. W. Warrington,  
Box 4030, Charlotte 4, N. C.
- PSI—University of Colorado  
1150 College Ave., Boulder, Colorado  
Resident Council President, Richard Parrillo  
Graduate Council President, H. C. Fowler, 5399 S.  
Clarkson, Littleton, Colo.
- OMEGA—University of Wisconsin (Inactive)  
Madison, Wisconsin  
Graduate Council President C. L. Onsgard, 815  
Seventh St., Boulder, Colorado
- ALPHA-ALPHA—Michigan State University  
125 N. Hagadorn Rd., East Lansing, Mich.  
Resident Council President, Russell R. Johnson  
Graduate Council President, Fred Colwell, 1508 N.  
Genesee Dr., Lansing, Mich.
- ALPHA-BETA—New York University (Inactive)  
New York 53, N. Y.  
Graduate Council President, W. A. Waltemade, 26  
E. 235th St., New York 70, N. Y.
- ALPHA-GAMMA—University of Delaware  
186 S. College Ave., Newark, Delaware  
Resident Council President, Conlyn L. Hart  
Graduate Council President, Harry W. Bullen, 25  
McCord Dr., Brookside Park, Newark, Del.
- ALPHA-DELTA—Case Institute of Technology  
11318 Bell Flower Rd., Cleveland 6, Ohio  
Resident Council President, Colin Heath  
Graduate Council President, Ronald Spetrino, 19502  
Wickfield Rd., Warrensville Heights, Ohio
- ALPHA-EPSILON—Kansas State University  
1623 Fairchild, Manhattan, Kansas  
Resident Council President, Jay S. Heubner  
Graduate Council President, Randall Hill, 1902  
Anderson Ave., Manhattan, Kansas
- ALPHA-ZETA—Oregon State College  
127 N. 13th St., Corvallis, Oregon  
Resident Council President, Errol Montgomery  
Graduate Council President, Fred H. Hoyer, 563  
Monroe, Corvallis, Ore.
- ALPHA-ETA—University of Florida  
1237 S.W. 2nd Ave., Gainesville, Fla.  
Resident Council President, John Waterman  
Graduate Council President, William Avera, 114  
N.W. 24th St., Gainesville, Fla.
- ALPHA-THETA—College of William & Mary  
Phi Kappa Tau Lodge, Williamsburg, Va.  
Resident Council President, Peter T. Farrell  
Graduate Council President, Howard M. Scammon,  
RFD 1, Box 126B, Williamsburg, Va.
- ALPHA-IOTA—University of Pennsylvania, (In-  
active)  
Philadelphia, Pennsylvania  
Graduate Council President, John Y. Mace, 1420  
Walnut St., Suite 1512, Philadelphia 2, Pa.
- ALPHA-KAPPA—Washington State College  
Box 57, College Station, Pullman, Wash.  
Resident Council President, Robert J. Franklin  
Graduate Council President, Harold J. Roffler, 1324  
E. 39th Ave., Spokane 36, Wash.
- ALPHA-LAMBDA—Alabama Polytechnic Institute  
317 S. College, Auburn, Ala.  
Resident Council President, Heywood Gay  
Graduate Council President, Ken Steele, Lown-  
desboro, Ala.
- ALPHA-MU—Ohio Wesleyan University (Inactive)  
Graduate Council President, James W. McVicker,  
Ridge Drive, Chillicothe, Ohio
- ALPHA-NU—Iowa State College  
218 Welch St., Ames, Iowa  
Resident Council President, Raymond L. Belding  
Graduate Council President, Vince Hassebrock, RR  
1, Ames, Iowa
- ALPHA-XI—West Virginia University (Inactive)  
Morgantown, West Virginia
- ALPHA-OMICRON—Lafayette College  
#3, East Campus, Easton, Pennsylvania  
Resident Council President, Robert Gottheiner  
Graduate Council President Howard A. Morris,  
Plush Mill Rd., Wallingford, Pa.
- ALPHA-PI—University of Washington  
4515-21st Avenue, N.E., Seattle 5, Wash.  
Resident Council President, Carl Dieringer  
Graduate Council President, James G. Miller, 3773  
S.W. 171 St., Seattle 33, Wash.
- ALPHA-RHO—Georgia Institute of Technology  
175 Fourth St., N.W., Atlanta, Ga.  
Resident Council President, L. Ray Baker  
Graduate Council President, William Howington,  
Brookhaven, Ga.
- ALPHA-SIGMA—Colorado State University  
S. College Ave., Ft. Collins, Colorado  
Resident Council President, Roger Serpan

THE LAUREL OF PHI KAPPA TAU

- Graduate Council President, Dr. Elmer C. Hunter,  
1118 West Mountain Ave., Ft. Collins, Colo.
- ALPHA-TAU**—Cornell University  
The Knoll, Ithaca, New York  
Resident Council President, George Bartling  
Graduate Council President, Philip Rupert, 1024  
Lincoln Alliance Bank Bldg., Rochester 4, N. Y.
- ALPHA-UPSILON**—Colgate University  
Box 776, Phi Kappa Tau House, Hamilton, N. Y.  
Resident Council President, Donald C. Rathbone  
Graduate Council President, Raymond I. Dawson,  
Davis, Dorland & Co., 99 Church St., New York  
7, N. Y.
- ALPHA-PHI**—University of Akron  
408 E. Buchtel St., Akron, Ohio  
Resident Council President, Robert J. Ammon  
Graduate Council President, Don Dilley, 568 Morely  
Ave., Akron, Ohio
- ALPHA-CHI**—Mississippi State University  
220 Lafayette St., Starkville, Miss.  
Resident Council President, Thomas L. Stennis, II  
Graduate Council President, Robert Christolm, Jr.,  
521 N. Madison, Tupelo, Miss.
- ALPHA-PSI**—Texas Western College  
Box 71, Texas Western College, El Paso, Texas.  
Resident Council President, Charles Sullivan  
Graduate Council President, William F. Smith,  
Prinado Rd., El Paso, Texas
- ALPHA-OMEGA**—Baldwin-Wallace College  
325 Front Street, Berea, Ohio  
Resident Council President, John Farrell  
Graduate Council President, Thomas Budiscak, 226  
Baker St., Berea, Ohio
- BETA-ALPHA**—University of Texas  
1910 Rio Grande, Austin, Texas  
Resident Council President, Ramon K. Robinson  
Graduate Council President, Norman E. St. Clair  
10306 Crittendon Dr., Dallas, Texas
- BETA-BETA**—University of Louisville  
1721 South Third St., Louisville, Ky.  
Resident Council President, Ronald F. Howard  
Graduate Council President, Charles Potts, 3705  
Rosemont Blvd., Louisville, Ky.
- BETA-GAMMA**—University of Idaho  
620 Idaho Ave., Moscow, Idaho  
Resident Council President, Lewis Oring  
Graduate Council President, J. A. Brunzell, West  
1009 29th Ave., Spokane 41, Wash.
- BETA-DELTA**—University of Miami  
5866 S.W. 59th St., Coral Gables, Fla.  
Resident Council President, Thomas E. Conduit
- BETA-EPSILON**—Mississippi Southern College  
Mississippi Southern College, Box 438, Sta. A.,  
Hattiesburg, Miss.  
Resident Council President, W. Neal Hanks
- BETA-ZETA**—New Mexico State University  
P.O. Box 96, New Mexico State University,  
University Park, N. Mex.  
Resident Council President, John Byers  
Graduate Council President, James Tuttle, 1106  
Dexter Lane, Alamogordo, N. M.
- BETA-ETA**—University of New Mexico (Inactive)  
Albuquerque, N. M.
- BETA-THETA**—University of Kansas  
1332 Louisiana, Lawrence, Kansas  
Resident Council President, Donald A. West  
Graduate Council President, Bert Casselman, 4425  
Wayne Ave., Kansas City 4, Mo.
- BETA-IOTA**—Florida State University  
Box 3083, Tallahassee, Fla.  
Resident Council President, George H. McKelvin, Jr.
- BETA-KAPPA**—Oklahoma State University  
1203 W. 3rd Ave., Stillwater, Okla.  
Resident Council President, Michael J. Raleigh  
Graduate Council President, LaVerne McKinley,  
5111 S. Madison Ave., Tulsa 5, Okla.
- BETA-LAMBDA**—Indiana University  
317 E. Second Ave., Bloomington, Indiana  
Resident Council President, Lawrence H. Skelton  
Graduate Council President, William T. Wright, 51  
Neal Ave., Indianapolis 22, Ind.
- BETA-MU**—Kent State University  
417 E. Main St., Kent, Ohio  
Resident Council President, Vince Flowers  
Graduate Council President, James Bippus, 3346  
Ormond Rd., Cleveland Heights, Ohio
- BETA-NU**—San Diego State College (Inactive)  
San Diego 4, California
- BETA-XI**—University of Georgia  
470 Hill St., Athens, Georgia  
Resident Council President, Wade Whitley  
Graduate Council President, Lawrence H. McDaniel,  
3037 Lake Ave., Hapeville, Ga.
- BETA-OMICRON**—University of Maryland  
Box 24, Univ. of Maryland, College Park, Md.  
Resident Council President, Nicholas B. Ladd
- BETA-PI**—Middlebury College  
111 S. Main St., Middlebury, Vermont  
Resident Council President, Phillip A. Caruso
- BETA-RHO**—University of California  
638 Landfair, Westwood, Los Angeles 24, Calif.  
Resident Council President, Ronald F. Ulrich  
Graduate Council President, Richard L. Johnson,  
15837 East Rushford, Whittier, Calif.
- BETA-SIGMA**—Idaho State College  
606 S. 7th St., Pocatello, Idaho  
Resident Council President, Gerald N. Davidson
- BETA-TAU**—Bowling Green State University  
Rogers Northeast, BGSU, Bowling Green, Ohio  
Resident Council President, Thomas R. Williams  
Graduate Council President, Ray A. Clarke, 2706  
Alisdale, Toledo 6, Ohio
- BETA-UPSILON**—Hobart College  
573 South Main St., Geneva, N. Y.  
Resident Council President, Gerald T. Ingersoll
- BETA-PHI**—Westminster College  
134 Waugh Ave., New Wilmington, Pa.  
Resident Council President, Robert Hunt
- BETA-CHI**—Southern Illinois University  
510 W. Walnut St., Carbondale, Ill.  
Resident Council President, Richard Frassato  
Graduate Council President, David T. Kenney, 512  
S. Hays, Carbondale, Ill.
- BETA-PSI**—Long Beach State College  
Long Beach State College, Long Beach, Calif.  
Resident Council President, Mike McGuire
- BETA-OMEGA**—Chico State College  
Chico State College, Chico, Calif.  
Resident Council President, Don Fowler
- GAMMA-ALPHA**—Michigan College of Mining and  
Technology  
1209 W. Quincy St., Hancock, Mich.  
Resident Council President, Joe A. Jenny
- UNIVERSITY OF CINCINNATI COLONY**  
2645 Clifton Ave., Cincinnati, Ohio  
Colony President, John Maisel
- ARIZONA STATE UNIVERSITY COLONY**— Ari-  
zona State University, Tempe, Ariz.  
Colony President, Roger T. Ulseth

## THE PHI KAPPA TAU FRATERNITY

CENTRAL OFFICE, OXFORD, OHIO

Telephone 3-5419

NATIONAL PRESIDENT -----ROLAND MAXWELL  
410 Security Bldg., Pasadena 1, Calif.

NATIONAL SECRETARY -----RICHARD J. YOUNG  
15 N. Campus Ave., Oxford, Ohio

ASSISTANT SECRETARY -----JACK L. ANSON

FIELD SECRETARIES -----ROGER W. VAUGHN AND TOM K. SIEG

SCHOLARSHIP COMMISSIONER -----BEN E. DAVID  
Dean of Men, University of Miami, Coral Gables, Fla.

ALUMNI COMMISSIONER -----SAM B. TIDWELL  
222 Hubbell St., Houghton, Mich.

NATIONAL CHAPLAIN -----REV. CHARLES D. SPOTTS  
Smoketown, Pa.

### NATIONAL COUNCIL

Charles D. Spotts Smoketown, Pa.	Reid A. Morgan 13020 Third Ave. N.E., Seattle 55, Wash.
Harold E. Angelo University of Colorado, Boulder, Colo.	W. Arthur Rush 357 N. Canon Drive, Beverly Hills, Calif.
Fred Hall Aerojet General Corp., P.O. Box 1947, Sacramento, Calif.	Carryl M. Britt General Aircraft & Leasing Co., Inc., Barr Bldg., 910 Seventeenth St., N.W., Washington 6, D.C.

### DOMAIN CHIEFS

1. Donald R. Zeissett-----12 Reade Pl., Poughkeepsie, N. Y.  
Chapters: Rho, A-Tau, A-Upsilon, B-Pi, B-Upsilon
2. Andrew L. Johnson-----211 Englewood Ave., New Castle, Pa.  
Chapters: Eta, Xi, Omicron, Phi, A-Omicron, B-Phi
3. Thomas W. Athey-----P.O. Box 157, Yorktown, Va.  
Chapters: Chi, A-Gamma, A-Theta, A-Rho, B-Xi, B-Omicron
4. William F. Daniel-----P.O. Box 12, Tallahassee, Fla.  
Chapters: A-Eta, A-Lambda, A-Chi, B-Delta, B-Epsilon, B-Iota
5. Alfred J. Philby-----1249 Mulford Rd., Columbus 12, Ohio  
Chapters: Alpha, Beta, Gamma, Delta, Theta, Kappa, B-Beta
6. Mel Dettra-----329 Hayes Ave., Cuyahoga Falls, Ohio  
Chapters: Epsilon, A-Delta, A-Mu, A-Phi, A-Omega, B-Mu, B-Tau
7. Leslie R. Bishop-----2540 E. 73rd, Chicago, Ill.  
Chapters: Zeta, Iota, Lambda, Mu, Tau, A-Alpha, B-Lambda, A-Nu, B-Chi,  
G-Alpha
8. Warren H. Parker-----823 Sharp Bldg., Lincoln, Nebraska  
Chapters: Upsilon, Psi, A-Epsilon, A-Sigma, B-Theta, B-Kappa
9. Lou Gerding-----509 Palomas Dr., N.E., Albuquerque, N. M.  
Chapters: A-Psi, B-Alpha, B-Zeta
10. Reid A. Morgan-----13020 Third Ave., N.E., Seattle 55, Wash.  
Chapters: A-Zeta, A-Kappa, B-Gamma, B-Sigma, A-Pi
11. Eugene P. Fay -----110 E. Regent St., Englewood, Calif.  
Chapters: Nu, Pi, B-Rho, B-Psi, B-Omega

### THE PHI KAPPA TAU FOUNDATION

President-----Dr. W. A. Hammond, 120 Dayton St., Xenia, Ohio

Treasurer--Frank R. Musrush, The Ohio Company, 51 N. High St., Columbus 15, Ohio

## A CERTAIN LOOK



You know it when you see it. Maturity — a flair for smartness — an instinctive respect for the legacies of a rich past. These are facets of leadership and good taste.

On campus and off, fraternal insignia today has a powerful new appeal. Always smart, always in good taste, a stalwart buoy of tradition in the swirling tide of change.

The proud Balfour line has been created for campus style leaders—the world's most discriminating market . . . Chapter members are invited to write for these Balfour aids to gracious chapter living:

- Complete illustrated price list of Phi Kappa Tau
- Balfour's amazing Blue Book, the finest selection of jewelry, personal and chapter accessories and fine gift items ever assembled.
- Balfour Trophy Catalog — a treasure chest of award ideas unmatched in quality, variety and price alternatives.

AND, for special needs

- Balfour ceramic flyer
- Knitwear flyer
- Paper napkin flyer

*L. G. Balfour Company*  
ATTLEBORO, MASSACHUSETTS

In Canada — L. G. Balfour Company  
Ltd., Montreal and Toronto

OFFICIAL JEWELER TO PHI KAPPA TAU



A  
T  
T  
E  
N  
D

Phi Kappa Tau's

Thirty-fifth National Convention

Shawnee Inn

Shawnee-on-Delaware

Pennsylvania

June 20 to 23, 1960

# DO YOU HAVE YOUR HISTORY OF PHI KAPPA TAU?

## Here's what others are saying:

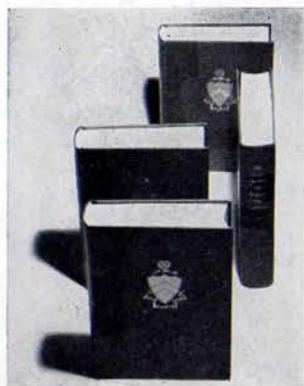
A monumental achievement . . . Roland Maxwell, **Southern California.**

It is truly a full coverage and a definite addition to any library as well as a lasting memory for our many alumni brothers . . . Fred Dimit, **Mount Union.**

I for one insist that it be on the "must" list for every pledge, active and alumnus . . . A. J. Philby, **Ohio State.**

A great publication . . . Jerome Mullen, **Oklahoma State.**

An addition to any library that needs to read and reread. A great number of significant names and the story of the background, beginning and progress of a great fraternity . . . Morton Walker, **Kentucky.**



**\$5.00**

Mailed free  
Ohio residents  
add 3% sales tax

Phi Kappa Tau  
Central Office  
Oxford, Ohio

Please send \_\_\_\_\_ copy (ies) of "The History of Phi Kappa Tau" to:

---

---

---

Check is enclosed for \_\_\_\_\_ books (s) at \$5.00 each. (Ohio residents, \$5.15)

\_\_\_\_\_  
(Name)

\_\_\_\_\_  
(Address)