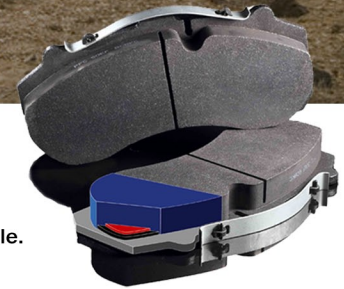


Light Duty

Carbon Metallic® Pads Stop Quieter, Stop Quicker, and Last Longer.

Performance Friction engineers its rotors and pads to meet or exceed OE safety standards. PFC's patented multi-layer technology that allows for lower noise, lower dust and longer pad and rotor life while eliminating soft or mushy pedal.

PFC pads and rotors deliver the lowest cost-per-mile in the industry—one more maintenance cycle. Guaranteed. **Get More Miles and Less Labor.**



Carbon Metallic®

Light-Duty Emergency Applications

Application	Year	Model	Front Pads	Rear Pads	Front Rotors	Rear Rotors
Passenger Car						
Chevrolet						
	2011	Caprice	1404.20			
	2011	Impala	1159.20		301.052.01	
	2006-2010	Impala	1159.20	0814.20	301.052.01	278.050.01
	2005	Impala	1076.20	0814.20	303.052.01	278.050.01
	2000-2004	Impala	0699.20	0814.20	303.052.01	278.050.01
Dodge						
	2005-2010	Charger V6	1056.20	1057.20		
	2005-2010	Charger V8	1058.20	1057.20	342.055.01	348.067.01
Ford						
	2005-2011	Crown Vic	0931.20	1040.20*	305.045.01	287.056.01
	2003-2004	Crown Vic	0931.20	0932.20*	305.045.01	287.056.01
SUV						
Chevrolet/GMC						
	2007-2011	Tahoe/Suburban/Yukon/Yukon XL	1092.10	1194.20		
	2001-2006	Tahoe/Suburban/Yukon/Yukon XL	0785.20	0834.20		
Ford						
	2006-2011	Explorer	1158.20	0881.20		
	2010-2011	Expedition	1414.20	1279.20		
	2007-2009	Expedition	1278.20	1279.20		
Light Truck						
Ford E-Series						
	2004-2007	Ford E-150	1045.10	1329.20		
	2008-2011	Ford E-150/ E-250	1328.20	1046.10		
	2000-2007	Ford E-250	0655.20	0802.20		
	2008-2011	Ford E-350 SD	1328.20	1329.20		
	2007	Ford E-350 SD SRW	0655.20	0802.20		
	2005-2006	Ford E-350 SD SRW	0655.20	0802.20	329.143.77	
	2004	Ford E-350 SD SRW/DRW	0655.20	0802.20		
	2005-2007	Ford E-350 SD DRW	0655.20	0802.20	329.201.75	
Ford F-Series						
	2010-2011	Ford F-150	1414.20	1012.20		
	2009	Ford F-150	1392.20	1012.20		
	2005-2008	Ford F-150	1011.20	1012.20		
	2008-2011	Ford F-250/ F-350	1333.10	1334.10		
	2005-2007	Ford F-250/ Ford F-350 w/ SRW	1069.10	1068.10		
	1999-2004	Ford F-250	0756.20	0757.20		
	2005-2007	F-350 w/ DRW	1069.10	1067.10		
	1999-2004	F-350 4X2	0756.20	0757.20	331.094.75/76	
	1999-2004	F-350 4X4	0756.20	0757.20	331.095.75/76	
Chevrolet/GMC						
	2010	Express/Savana 1500	0974.20	0974.20		
	2009	Express/Savana 1500	1092.10	0974.20		
	2003-2008	Express/Savana 1500	0785.20	0989.20		
	2008-2010	Express/Savana 2500	0784.20	1194.22		
	2003-2007	Express/Savana 7200lb GVW	0785.20	0974.20		
	2003-2007	Express/Savana 8600lb GVW	0784.20	0974.20		
	2003-2010	Express/Savana 3500 SRW	0784.20	0974.20		
	2003-2010	Express/Savana 3500 DRW	0784.20	0989.20		
	2007-2011	Silverado 1500	1092.10	1194.22		
	2001-2007	Silverado 1500 HD	0784.20	0785.20		
	2001-2010	2500 Silverado HD	0784.20	0785.20		
	2004-2010	3500 Silverado HD 12K&14Klb GVW	0784.20	0909.20		
	2004-2010	3500 Silverado HD 9900lb GVW	0784.20	0785.20		
Dodge Truck						
	2006-2011	Ram 1500	1084.20	1046.10		
	2006-2008	Ram 1500 Mega Cab	0965.10	1096.20		
	2009-2011	Ram 2500/ 3500	1399.20	1400.20		
	2003-2008	Ram 2500/ 3500	0965.10	1096.20		

www.performancefriction.com
866.392.9936

© 2011 Performance Friction Brakes. Performance Friction and Carbon Metallic are registered trademarks of Performance Friction.

MADE IN THE USA

Rev 3

**PERFORMANCE®
 FRICTION
 BRAKES**

NO COMPROMISES™

