

Rick Dior

# Till the Cows Come Home

for solo timbales with foot percussion



**Till the Cows Come Home** by Rick Dior  
© 2014 TapSpace Publications, LLC (ASCAP). Portland, OR.  
All rights reserved. International copyright secured. Printed in USA.

**[www.tapspace.com](http://www.tapspace.com)**

**Notice of Liability:** Any duplication, adaptation, or arrangement of this composition requires the written consent of the copyright owner. No part of this composition may be photocopied or reproduced in any way without permission. Unauthorized uses are an infringement of the U.S. Copyright Act and are punishable by law.

# Program Notes

*Till the Cows Come Home* is a solo for two timbales, three cowbells, and foot percussion. It was inspired by the playing of drummer/percussionist Steve Berrios who performed with Jerry Gonzalez and The Fort Apache Band. This group's loose, organic feel always fascinated me since it almost always sounded on the verge of falling apart but grooved extremely hard. With this solo, I have sought to create the illusion of two or three players performing together but sounding like individual performers with slightly different time feels.

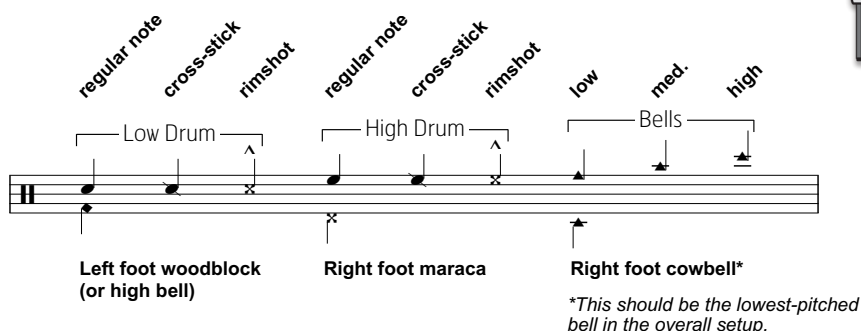
The solo revolves around a 2:3 son clave played with the left foot. The main theme of the piece is a melodic series of quintuplets played first on the bells and then the timbales. To accommodate these groupings, the clave is at times spread over a series of 6/4 bars. Pay close attention to these bars and be careful to play the correct rhythms. The groups of five should sound very organic; that is, they should feel stretched over the bar line and never sound mechanical. These groupings reappear at the end of the solo as triplets.

The last part of the solo is in a Brazilian samba style. Although timbales are not indigenous to Brazil, you should try to emulate the sounds of a Brazilian repenique during this section. While the right foot is playing a generic samba bass drum pattern on the maraca, the left foot will be playing a baião rhythm on the foot clave. The tempo continues to increase incrementally throughout the piece until bar 243. You can play the piece at a different starting tempo as long as the tempo increases are observed. There are two open solo sections. The first, at bar 233, is a bembé 6/8 feel over the cut time clave. The second occurs at bar 316 and should be in a batucada samba style. Feel free to play as long or short as you like but keep in mind that the samba style solo should be very intense.

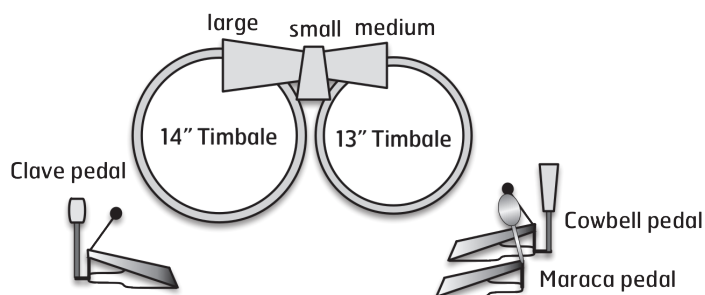
## Performance Notes

- An accent over a timbale note is to be interpreted as a basic rim shot played with the upper part of the stick. The section at bar 243 displays timbale accents as diamond-shaped note heads. These are harmonic rimshots, and they should ring until stopped with the left hand cross rim.
  - You can substitute the foot percussion as follows: Instead of a clave/woodblock or high cowbell, the left foot can play on a hi-hat or any other dry, short-sounding instrument that you can attach to a pedal. In place of the foot maraca (a bass drum beater rod with a maraca replacing the beater), the right foot can play a mounted cabasa (made by Meinl), a mounted tambourine, or a shekere mounted on a hi-hat stand.
  - You should place the right foot pedals close together to facilitate playing both at the same time.
- You can do this by placing your right foot across both pedals.
- Marcato accents over a timbale note should be interpreted as very loud rim shots played with the middle to upper part of the stick.
  - Notes in parentheses should be ghosted.
  - All rolls are to be played as either open double strokes or single strokes.
  - The solo should be played sitting. A timpani stool works well for this purpose.

## Notation Key



## Suggested Setup



# Till the Cows Come Home

Rick Dior

$\text{♩} = 106$

*f*

9 *mf*

12

16 *f*

20

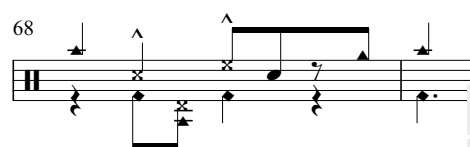
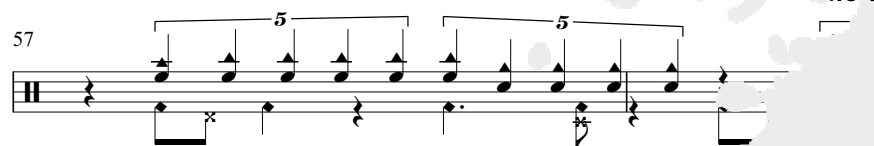
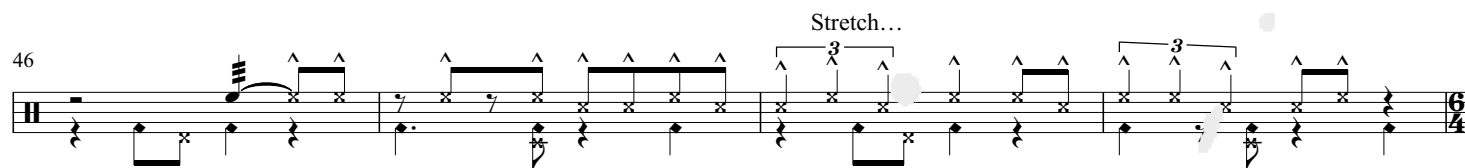
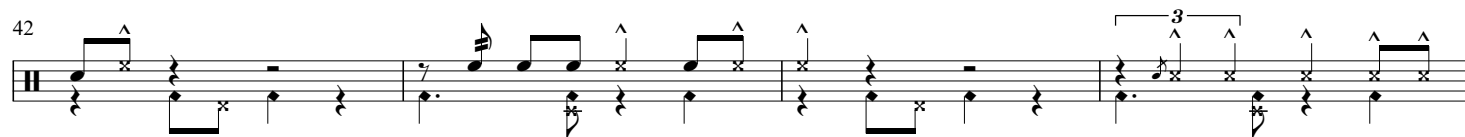
24

28

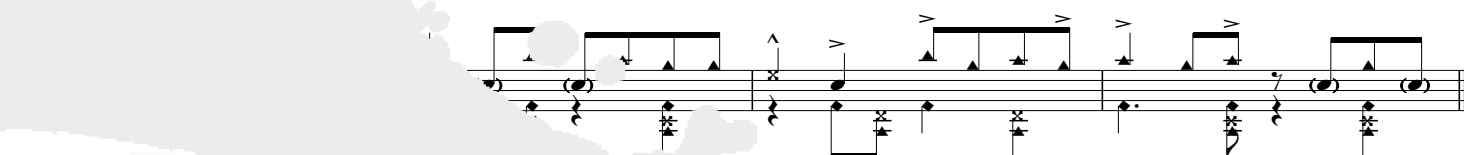
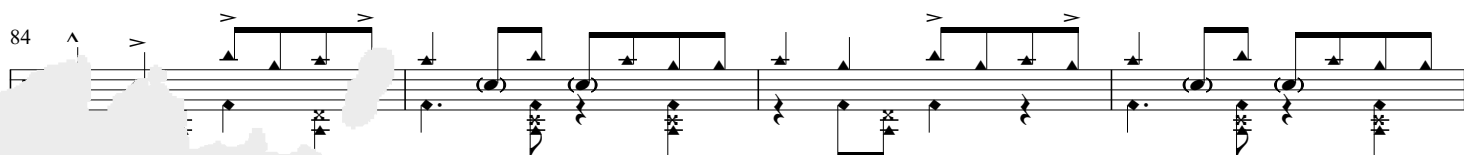
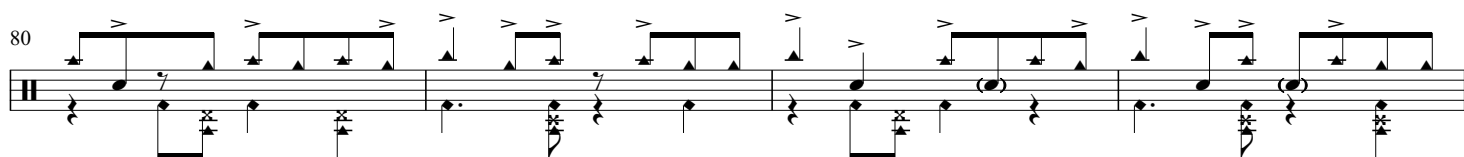
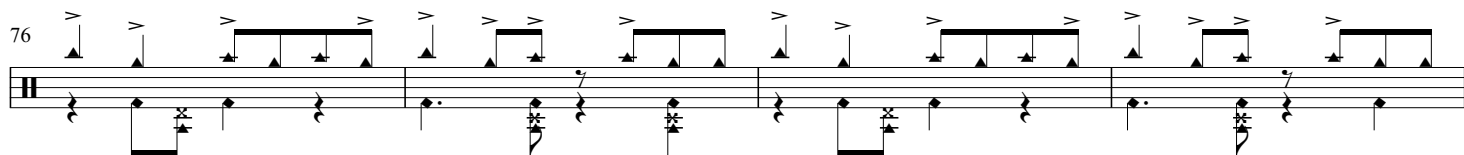
32

36

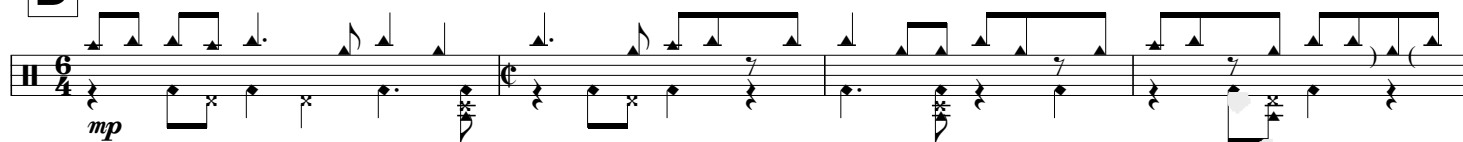
**Sample Image**



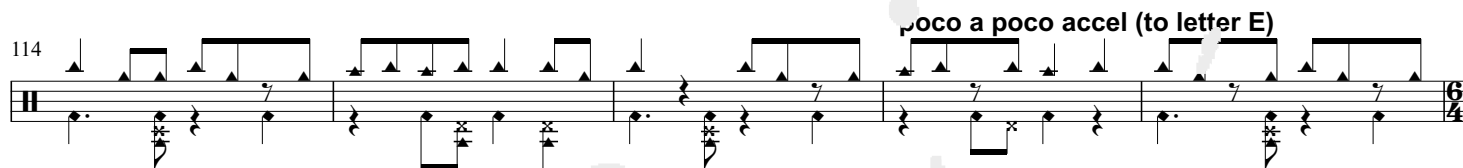
Sample  
Image



Sample  
Image

**D**

114



119



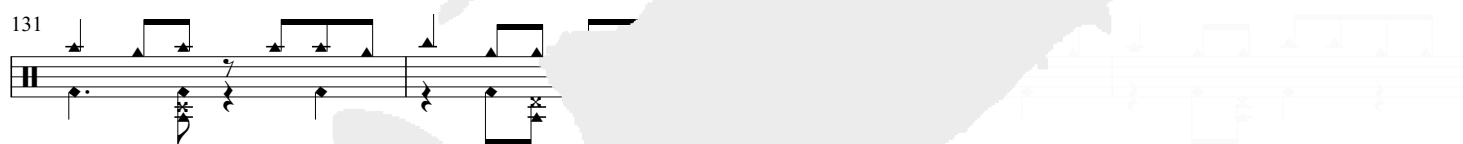
123



127



131



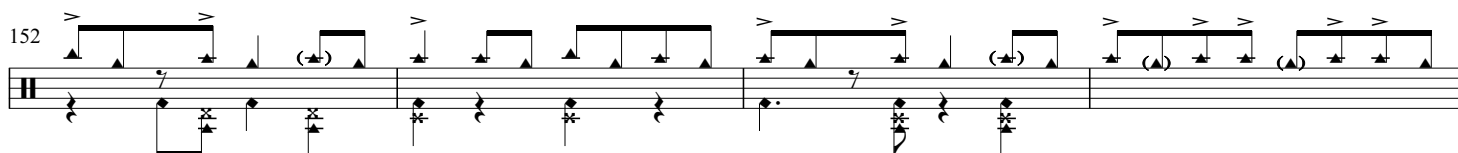
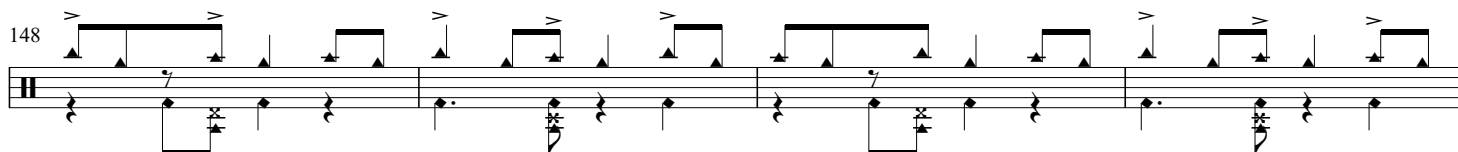
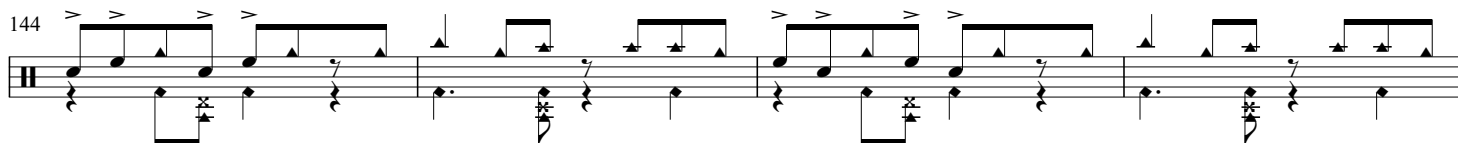
135

**E**

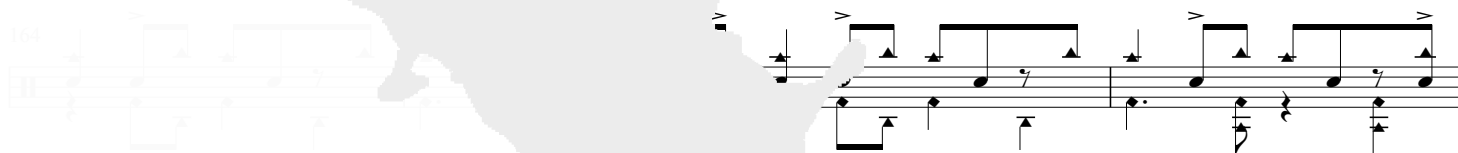
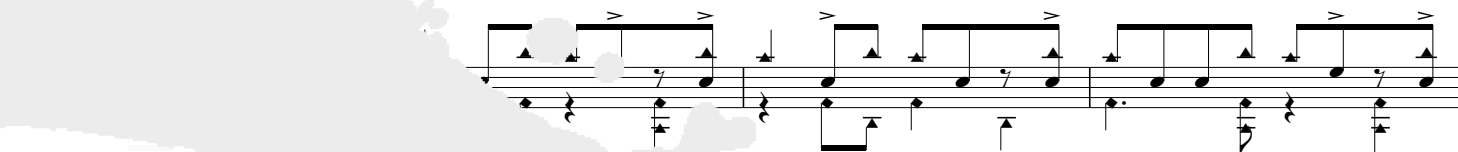
♩ = 132



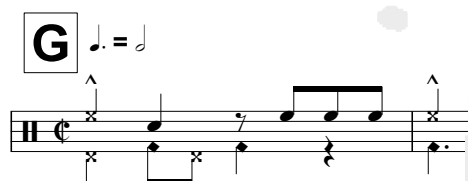
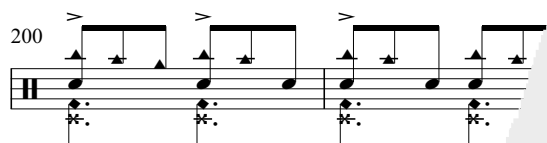
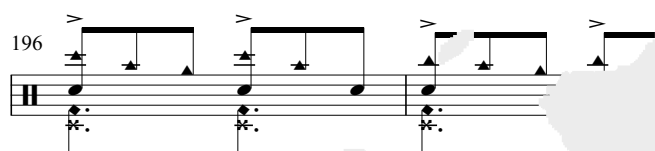
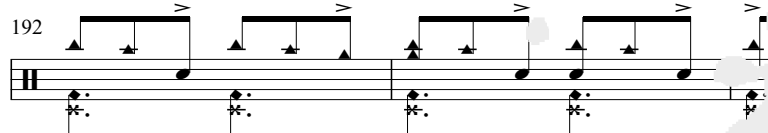
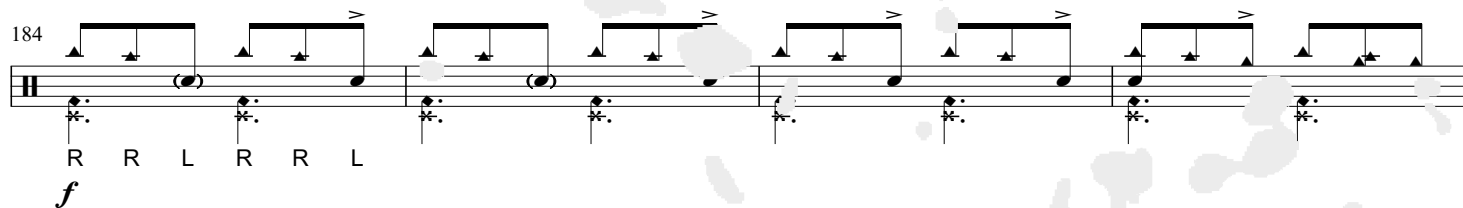
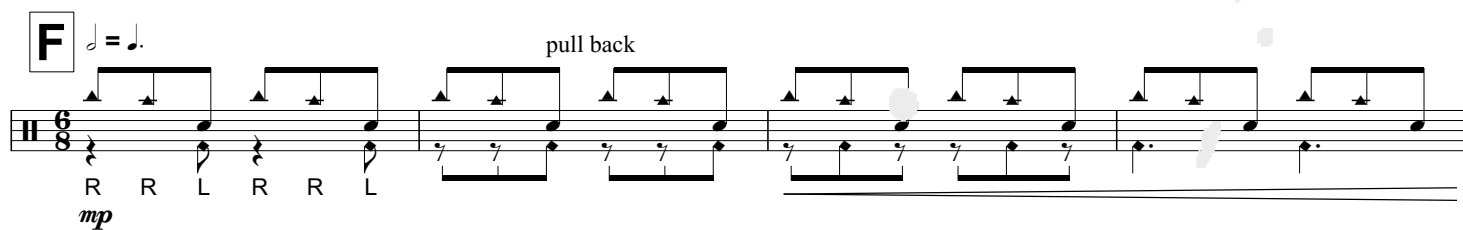
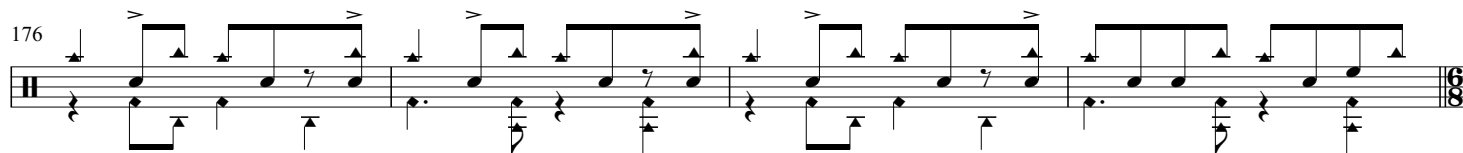
# Sample Image



ghost all non-accented notes on the drums

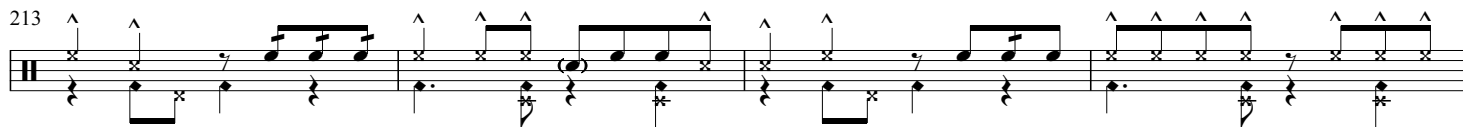


Sample  
Image



Sample  
Image






(semi-triplet)

# Sample Image

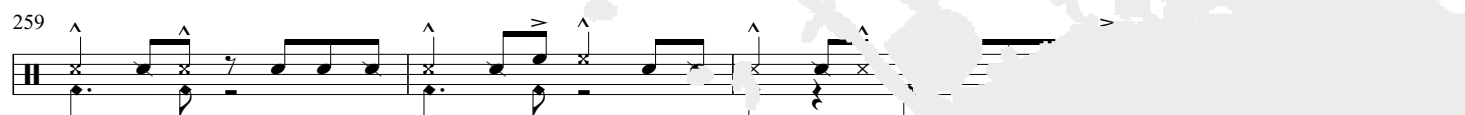
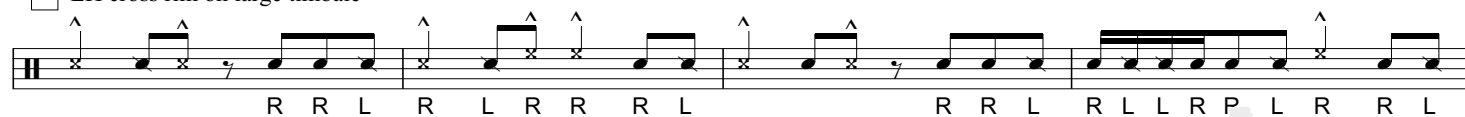
improvise over

open repeats

Cadenza - Rubato  
rimshots

 RH drum, rim, and rimshots at upper end of stick

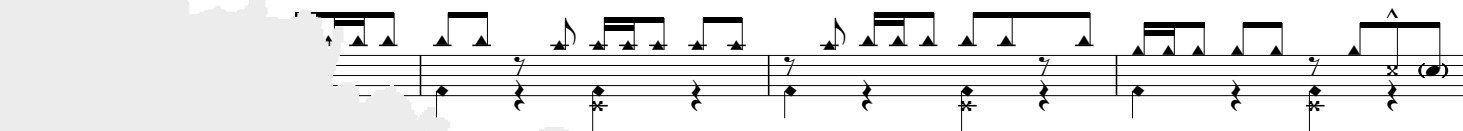
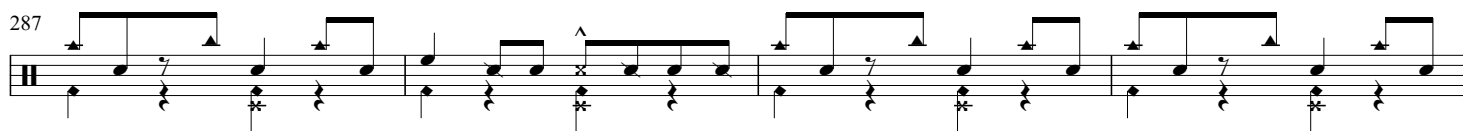
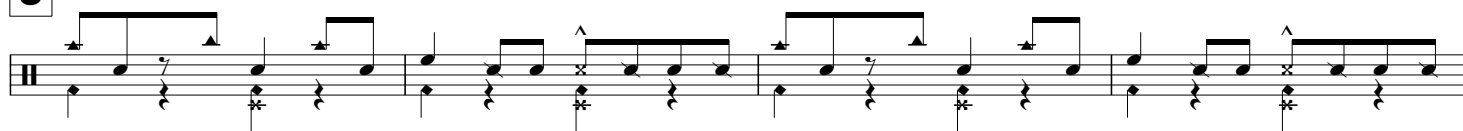
LH cross rim on large timbale



(same thing on high drum)



**Sample  
Image**

**J**

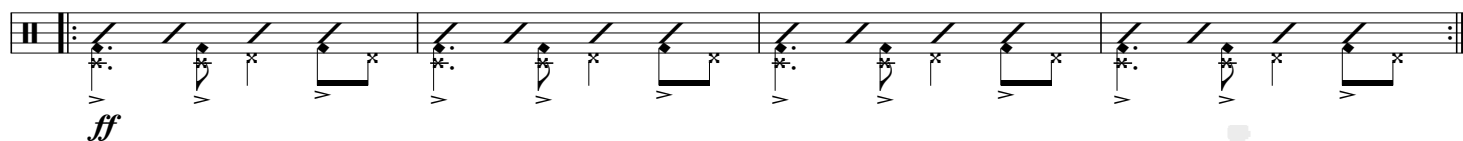
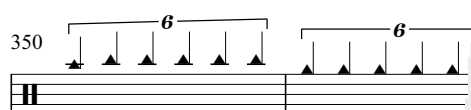
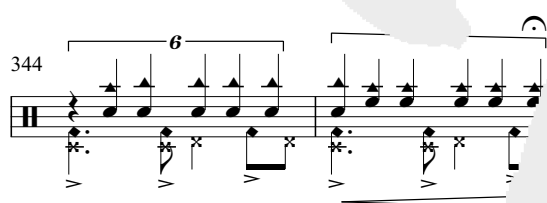
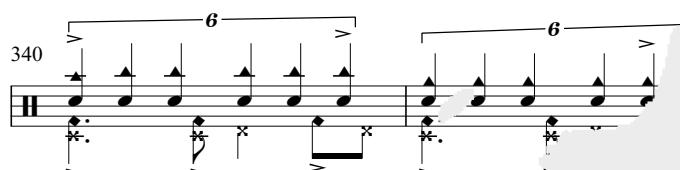
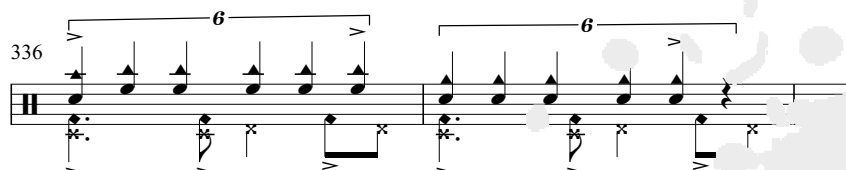
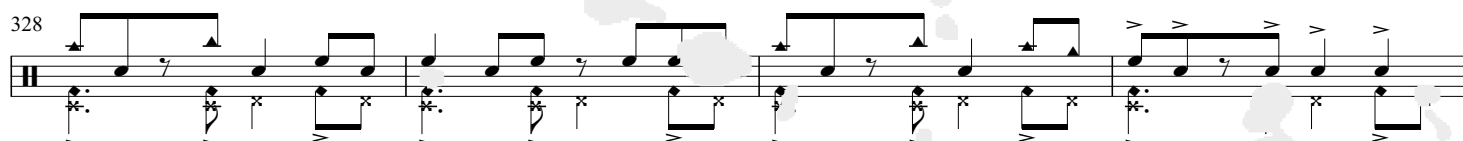
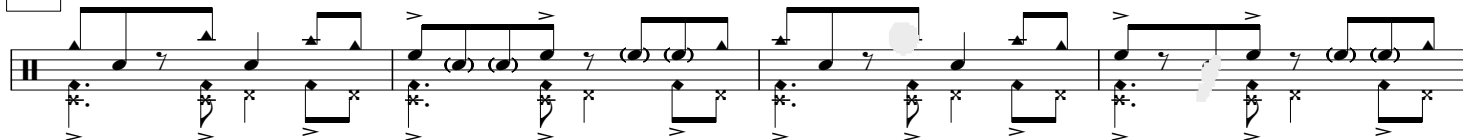
# Sample Image

solo samba style on timbales (do not use bells)

open repeats

320 when ready, keep soloing with more intensity

open repeats

**M**  $\text{♩} = 136$ 

# Sample Image