

Brian Blume

... like a burden too heavy

for solo marimba



... like a burden too heavy by Brian Blume
© 2012 TapSpace Publications LLC (ASCAP). Portland, OR.
All rights reserved. International copyright secured. Printed in USA.

www.tapspace.com

Notice of Liability: Any duplication, adaptation, or arrangement of any text or composition contained herein requires the written consent of the copyright owner. No part of any composition contained herein may be photocopied or reproduced in any way without permission. Unauthorized uses are an infringement of the U.S. Copyright Act and are punishable by law.

Program Notes

... like a burden too heavy is a reflection on the struggles and limitations we face as humans. Some refer to the “human condition”; others may speak of “sin.” But at some point, we all feel weighed down by our inadequacies and shortcomings, by our often futile strivings.

The title of the piece comes from Psalm 38, in which the writer laments,

*My guilt has overwhelmed me
like a burden too heavy to bear.*

At times we experience the weight of burdens placed on us by our surroundings, burdens impossible to carry alone. The psalmist continues,

*I am feeble and utterly crushed; I groan in anguish of heart.
All my longings lie open before you, Lord; my sighing is not hidden from you.*

My hope is that the performer senses and reflects some of this weariness and weight in the music. However, it is up to the performer and audience alike to decide what it is that causes this heaviness.

— Brian Blume

Performance Notes

This solo is intended to be performed on a 4.3-octave marimba. However, some additions/alterations may be made to enhance the piece for a 4.6-octave (low E) keyboard. Any notes (and corresponding dynamics) in parentheses in the score are optional for performers using a 4.6-octave marimba.

Isolating several stroke types (single independent, single alternating, double vertical), this work is an ideal challenge for the developing 4-mallet marimbist. A limited number of stickings have been suggested, and the rest are up to the performer.

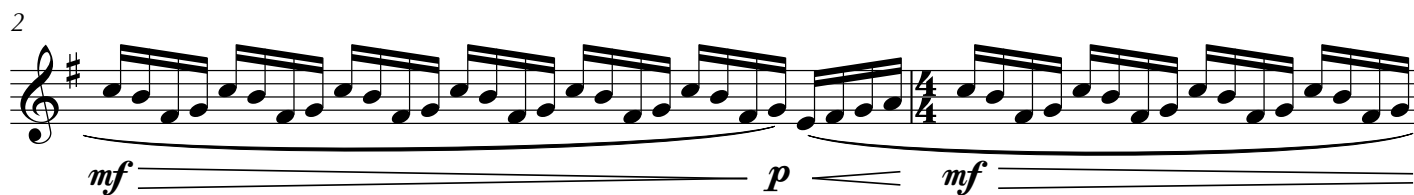
Note from the publisher: *... like a burden too heavy* makes a great prelude to Brian Blume’s ***Unforced Rhythms***, for solo marimba with foot shaker.

... like a burden too heavy

Brian Blume

Reflective (♩ = 96)

3 2 3 2



Sample
Image

14 **A**

15

17

20

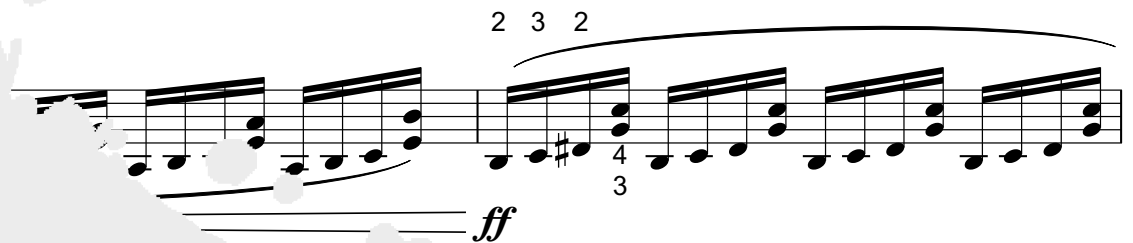
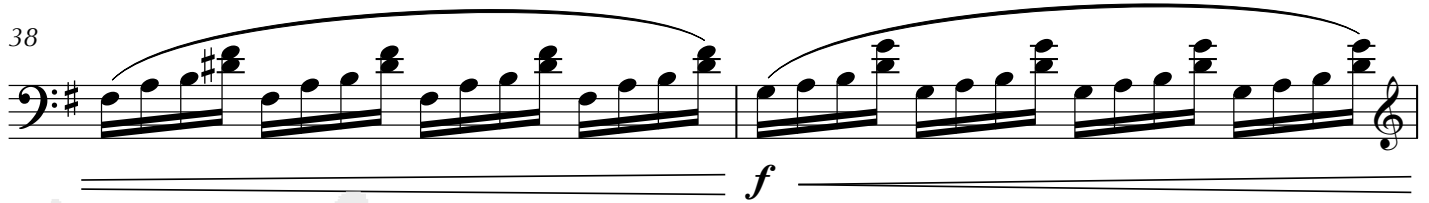
23 **B** *ff*

26

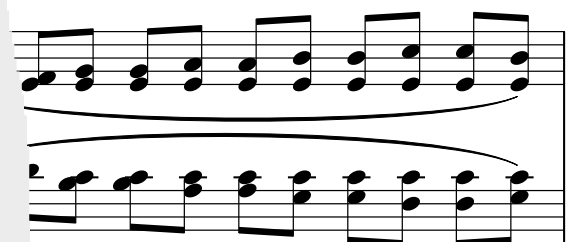
29 *p*

Sample Image

The image displays a musical score for a piece titled "... like a burden too heavy – Blume". The score is written for a single melodic line in treble clef, with a key signature of one sharp (F#). The tempo and meter are indicated as 7/4. The score is divided into two main sections, A and B. Section A begins at measure 14 and continues through measure 20. It features a series of eighth notes, with dynamic markings of *mf* (mezzo-forte) and *p* (piano). Section B begins at measure 23 and continues through measure 29. It features a series of eighth notes, with dynamic markings of *ff* (fortissimo) and *p* (piano). The score is presented on a white background with a large, light gray, abstract shape overlaid on the right side. The text "Sample Image" is written in a large, bold, black font on the right side of the page.



Sample
Image



47

mp

49 Slightly faster ($\text{♩} \approx 82$)

mf

52 *poco rit.* More agitated ($\text{♩} \approx ?$)

p *mf*

56

ff

Sample
Image

60

rit.

mp *pp*

64

Reflective ($\text{♩} = 96$)

p *mp* *mf* *p*

mp *mf*

67

pp

69

Dying away

ppp

Sample
Image



www.tapspace.com