

Darin Kamstra
Bateria
for solo timpani



Bateria by Darin Kamstra
© 2011 TapSpace Publications, LLC (ASCAP). Portland, OR.
All rights reserved. International copyright secured. Printed in USA.

www.tapspace.com

Notice of Liability: Any duplication, adaptation, or arrangement of this composition requires the written consent of the copyright owner. No part of this composition may be photocopied or reproduced in any way without permission. Unauthorized uses are an infringement of the U.S. Copyright Act and are punishable by law.

Program Notes

The title of the work comes from the Portuguese word for “battery,” or the instruments found in the *escolas de samba* of Brazil. The music is inspired by the call/response patterns and grooves of *samba batucada*.

Performance Notes

Bateria was originally written for performance on four timpani; a later revision added optional pitches for a fifth 20” drum. These optional parts are marked in the score as cue notes (in parentheses) or *ossia* measures.

The buzz strokes beginning at measure 5 and later at measure 19 should be played as a single press of the mallet onto the drumhead. The double stops in measure 25 are played with the soft mallet in the left hand on the low E and the wood mallet in the right hand on the B.

At measure 26, the left hand should sound like the open/close effect of a *surdo* drum. To accomplish this with one hand, play the staccato notes by striking the head of the mallet and the palm of your hand simultaneously on the drumhead as a dead stroke; your palm will strike around the ordinary beating spot, while the head of the mallet strikes further up and to the side. It may help to curl your ring and pinkie fingers around the mallet to prevent the shaft from striking the head. The tenuto notes should be played *ordinario*, as regular rebounded strokes with the head of the mallet in the ordinary beating spot. The same technique is used at measure 122.

The x-shaped note heads at measure 34 merely indicate the use of a wire or nylon brush on those pitches. The hand technique at measure 66 should be similar to conga technique. The performer may choose whether to use open tones, slap tones, or a combination of the two.

At measure 130, the brush in the right hand can be swept across the middle of the 23” drum or on a separate tom with a textured head for a four-drum setup. On a five-drum setup, the brush can be played on the 20” drum. The effect should sound like a shaker.

Level: Medium
Approx. playing time: 6'30"

Bateria

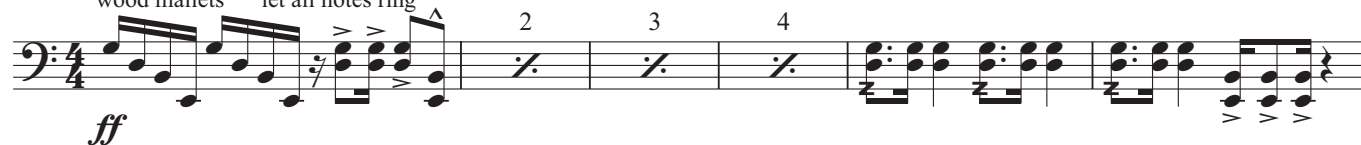
for solo timpani

Darin Kamstra

Samba ♩ = 96

wood mallets

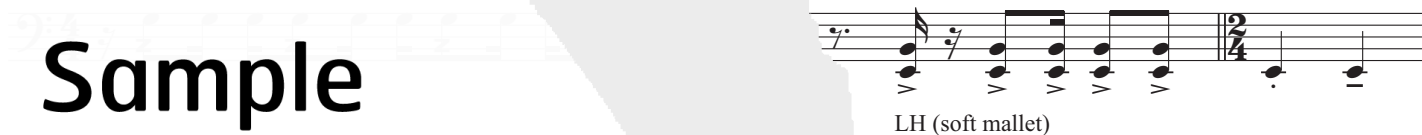
let all notes ring



LH to soft mallet

RH only (wood mallet)

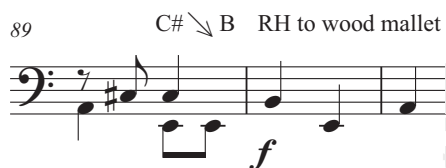
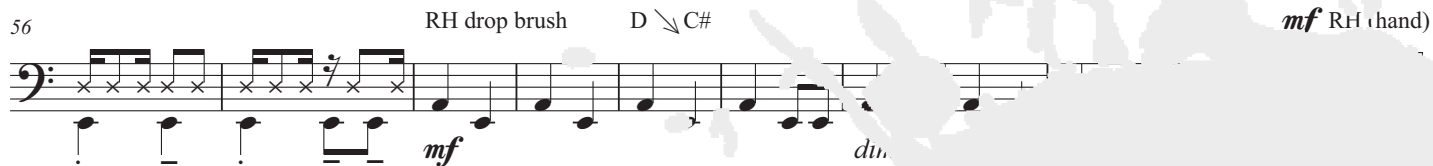
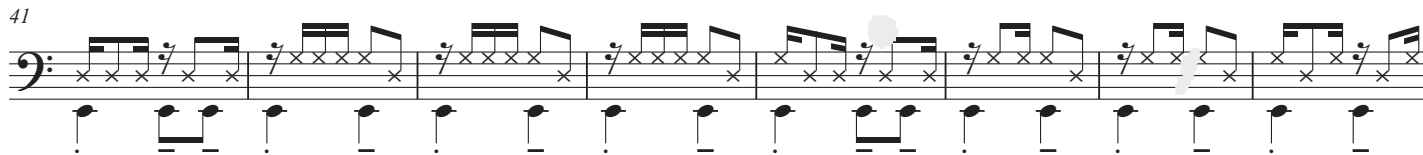
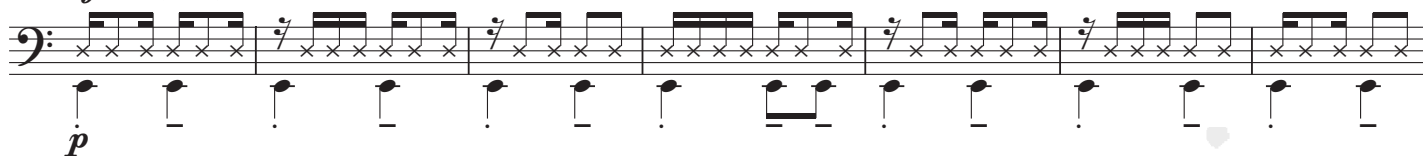
RH to brush



LH (soft mallet)



Sample
Image

34 *mf* RH (brush)

Sample Image

98 *f* RH (wood mallet) *mp cresc.*

107 *f*

115 RH to brush E ↗ G *mf*

Sweep brush side-to-side on 20" drum,
in center of 23" drum, or on tom tom

131

Sample
Image

147

146 *mf*

152

158 *f* B \nearrow C

164

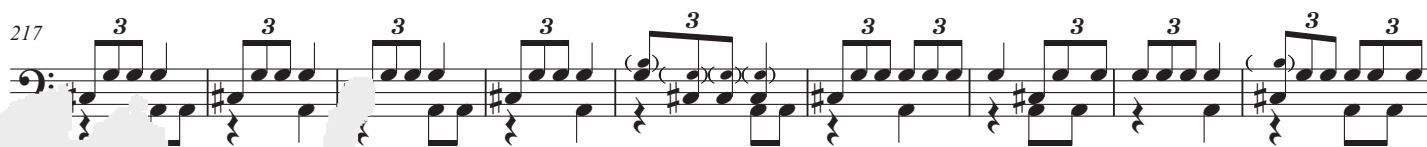
170 *mf* C \searrow B

176 Both hands to hard mallets B \nearrow C#

185 G \searrow E

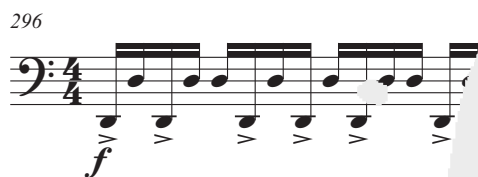
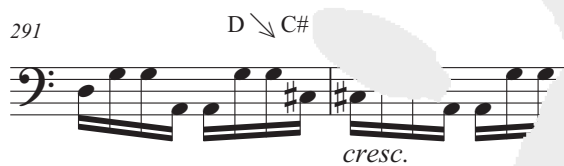
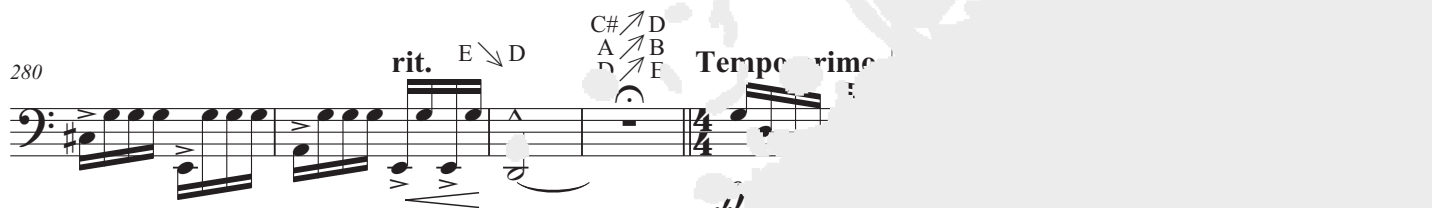
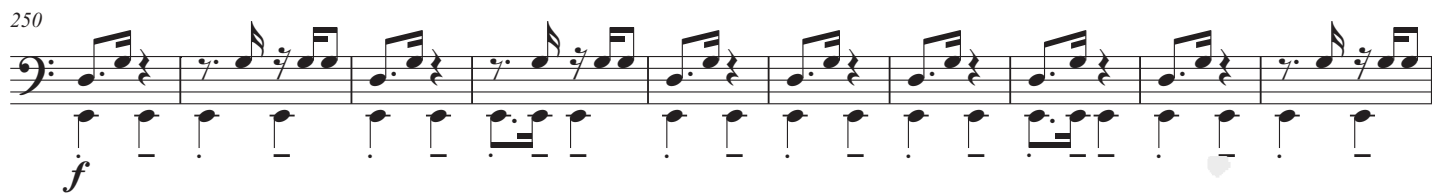
193 *mp*

Sample Image



Sample
Image





Sample
Image