

KEEP A-GOIN'

TB Voices with Piano

Paul David Thomas

BriLee Music
the Voice of Choral Music

BriLee Music
Part-by-Part



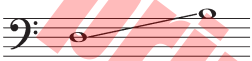
Free MP3 rehearsal and accompaniments
Go to: www.BriLeeMusic.com

Range:

Tenor



Bass



Language: English
Use: General/Festival
Time: Approx. 2:20
*Difficulty: Moderate

Note from the Composer

Frank Lebby Stanton (1857-1927) was an American newspaper columnist and poet, and became the first poet laureate of the State of Georgia. Stanton's poetry is often characterized by its use of regional dialects and phrases and for expressing an overall positive outlook on life.

The poem *Keep A-Goin'!* is a wonderful example of Stanton's style, as it encourages the reader to persevere no matter what challenges lay ahead. In keeping inline with the text's vernacular style, a closed "n" may be applied to the word "goïn'."

About the Composer

Composer Paul Thomas' compositional interests range from church music to electronic avant-garde and everything in between. In addition to composing, Paul is an active choir accompanist and accordionist in the free improvisation ensemble *Impulse*. Paul serves on the faculty at Texas Woman's University and has previously taught at Dallas Baptist University and the University of North Texas.

Keep A-Goin'

for TB Voices with Piano

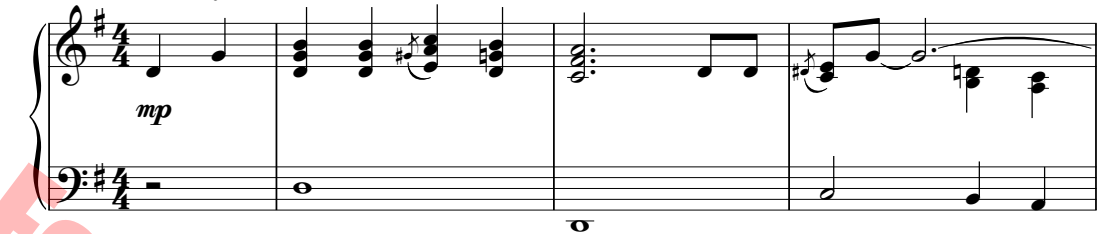
FRANK L. STANTON (1857–1927)

PAUL DAVID THOMAS

Soulfully ♩ = 100

Piano

mp



Piano introduction musical notation in 4/4 time, key of D major. The right hand features a melody of eighth and quarter notes, while the left hand provides a harmonic accompaniment with chords and single notes.

4 Tenor

mp

If you strike a thorn or rose, keep a - go - in'! _

Bass

mp

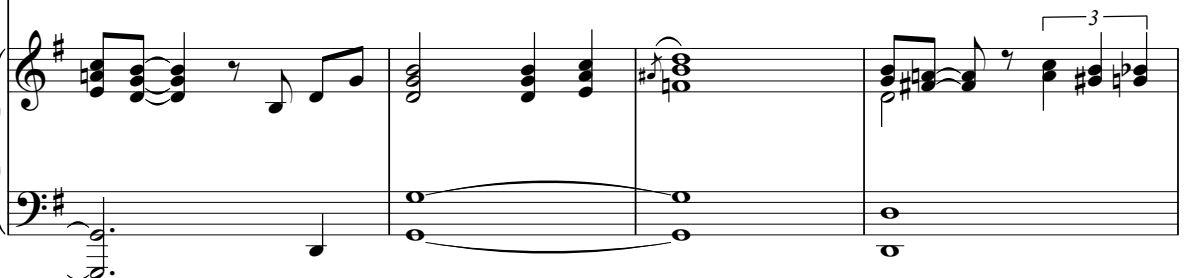
Keep a -



Piano accompaniment for the first vocal line, measures 4-7. The right hand plays chords and single notes, while the left hand provides a steady bass line.



8
If it hails or if it snows, keep a - go - in'! _
go - in'! _ If it hails or if it snows, keep a - go - in'! _



Piano accompaniment for the second system, measures 8-11. The right hand features a melody with a triplet in measure 11, while the left hand provides a harmonic accompaniment.

12

Ain't no use to sit an' _____ whine when the

Ain't no use to sit an' _____ whine when the

For promotional use only

15

rit.

fish ain't on your _____ line; Bait your hook an' keep a - tryin' keep a -

fish ain't on your _____ line; Bait your hook an' keep a - tryin' keep a -

rit.

For promotional use only

19 Fast Gospel ♩ = 116

go-in'!

go-in'!

mf

If you

Fast Gospel ♩ = 116

mf

21

mf
If it

strike a thorn or rose, keep a - go - in'! ____

23

hails or if it snows, keep a - go - in'! ____

25

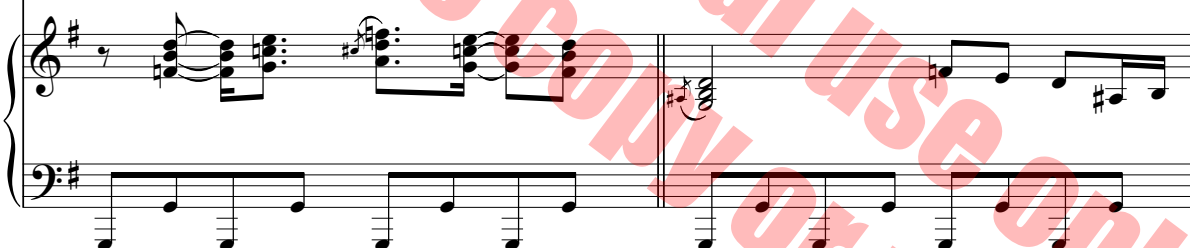
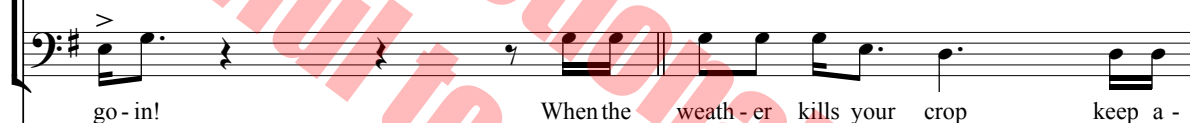
Ain't no use to sit an' whine when the fish ain't on your line; _

Ain't no use to sit an' whine when the fish ain't on your line; _

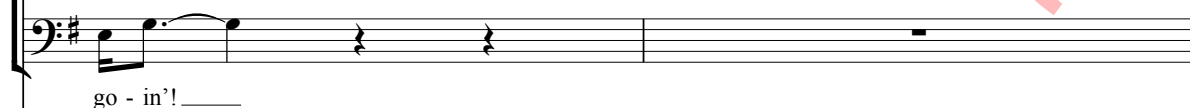
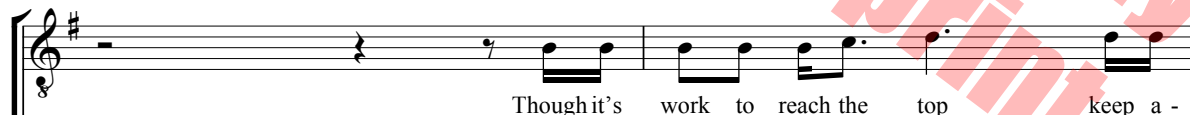
27



29



31



39 *f*

Oh keep a - go - in' ____

Oh keep a - go - in' ____

41

Don't let your - self start slow - in' ____

Don't let your - self start slow - in' ____

43

Just keep on grow - in' ____ and

Just keep on grow - in' ____ and

unlawful to copy or print

45

nev-er, nev-er, nev-er, nev-er stop go - in'!___

nev-er, nev-er, nev-er, nev-er stop go - in'!___

For promotional use only

47

For promotional use only

For promotional use only

49

p
When it looks like all is up, keep a -

p
8

51

p

Drain the sweet-ness from the cup, keep a -

go - in'! _____

53

mp

go - in'! _____

See the wild birds on the wing, -

mp

See the wild birds on the wing, -

55

*cresc.**fp*

Hear the bells that sweet-ly ring, -

When you feel like sigh-in', sing! _____

*cresc.**fp*

Hear the bells that sweet-ly ring, -

When you feel like sigh-in', sing! _____

mf

57 *f n.b.* Keep a - go - in! Keep a -

f Keep a - go - in!

59 go - in! Keep a - go go

Keep a - go - in! go go

61 *ff* go go go go go keep a - go - in!

ff go go go go go keep a - go - in!

ff

BriLee Music

the Voice of Choral Music

BriLee Music, founded by the late Brian Busch in 1997, is the leader in publishing choral music written specifically for the developing middle school and junior high singer.

With writing guidelines carefully developed by Brian, teachers who buy from the BriLee catalog know they will always find the following in music written by BriLee composers:

- Range appropriate – specifically for the adolescent changing voice
- Moderate in length
- Interesting, appealing and varied texts
- Accessible accompaniments

Writers for BriLee are among the most outstanding and respected in their field. The music is written, arranged and edited to meet a wide range of performance needs. The standard of musical excellence we present in each choral work is designed to meet the challenges faced by teachers and conductors all over the world who wish to offer quality, accessible repertoire to their ensembles.

BriLee Music **Part-by-Part**

Free MP3 rehearsal and accompaniments

Go to: www.BriLeeMusic.com

Part-by-Part resources were created to allow you, the busy choral director, more time to do the things you need to do to be successful in rehearsal and performance.

Download the following FREE resources and use them to help you TEACH your singers.



- Part-dominant recordings allow your singers to sing along with their part while hearing the other voices in the background.
- Full chorus recordings allow your singers to see and hear the music at the same time for greater insight.
- Professional accompaniments can be used for rehearsal or performance.

BriLee Music
the Voice of Choral Music

BL962



6 80160 90301 6

Exclusively Distributed by
CARL FISCHER®
www.carlfischer.com