

# KYRIE

SA Voices with Piano

Ruth Elaine Schram

*BriLee Music*  
**Part-by-Part**



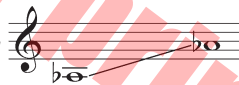
Free MP3 rehearsal and accompaniments  
Go to: [www.BriLeeMusic.com](http://www.BriLeeMusic.com)

Range:

Soprano



Alto



Language: Latin

Use: General/Festival

Time: Approx. 2:18

\*Difficulty: Moderate

## Note from the Composer

*Kyrie* is the first section of the sung Ordinary of the Mass. Although the Mass was originally in Latin, the *Kyrie* section retained its Greek text. Because of the simplicity, this text has been set to music literally thousands of times, not only as part of the mass, but as individual works. Many composers of the Renaissance (1430-1600) and Baroque (1600-1750) periods set the *Kyrie* to music many times. In some cases, *Kyrie* was based on a familiar tune or chant and thus became known by the name of that tune or chant.

This setting of *Kyrie* is chant-like. Follow the natural rise and fall of the melodic line. *Crescendo* as the line rises and *decrescendo* as the line falls. As you *decrescendo*, be sure to maintain good support so that the musical line does not sag.

At m. 13, feel free to speed up and apply more energy to the line "Christe eleison." There is a *molto rit.* at m. 21 in preparation for the return of the original thematic material at m. 27.

The last phrase is long, and it is suggested that there is no breath which will require staggered breathing. Three easy rules for staggered breathing: 1) Breathe at different times. 2) Breathe anywhere but at a bar line. 3) Enter softer than when you went out.

You will have a great musical experience with this work.

—R.E.S.

## Pronunciation

There are only three vowels used in the *Kyrie* text: EE, EH and AW  
Maintain OO shaped lips when singing EE and EH for a warmer tone.

KEE-ree-eh eh –LEH – ee –Sawn

KREE-steh eh –LEH – ee –Sawn

KEE-ree-eh eh –LEH – ee –Sawn

## About the Composer

Ruth Elaine Schram wrote her first song at the age of twelve, her first octavo was published in 1988, and she became a full-time composer and arranger for choral music for church and school in 1992. Since 1990, over seventeen million copies of her songs have been purchased and she has been a recipient of the ASCAP Special Award. Her songs appear on thirty albums (four of which have been Dove Award Finalists) and numerous children's videos. Her songs have also appeared on such diverse television shows as "The 700 Club" and HBO's acclaimed series *The Sopranos*.

Ruthie began piano and theory lessons at the age of five. She studied music at Lancaster Bible College and Millersville State College and taught Elementary Music in Pennsylvania for several years. She currently lives in Birmingham, Alabama. Her current website is [choralmusic.com](http://choralmusic.com).

# Kyrie

for SA Voices with Piano\*

3

RUTH ELAINE SCHRAM

Reverently ♩ = 82

Piano

*p*

*mp*

4 Soprano

*mp*

Ky - ri - e e - le - i - son,

Alto

7

Ky - ri - e e - le - i - son,

*cresc.*

Ky - ri - e e -

*mp cresc.*

Ky - ri - e e -

*cresc.*

\* Also available for TB Voices (BL419).

Copyright © 2017 BLP Choral Music (ASCAP)  
International Copyright Secured.  
All rights reserved, including performance rights.  
Printed in the U.S.A.

BL949

10

Two vocal staves and a piano accompaniment. The vocal staves are in treble clef with a key signature of three flats. The piano accompaniment is in grand staff. The lyrics are: -le - i - son, Ky - ri - e e - le - i - son.

13

Two vocal staves and a piano accompaniment. The vocal staves are in treble clef with a key signature of three flats. The piano accompaniment is in grand staff. The lyrics are: Chris - te e - le - i - son, Chris - te e - . Dynamic markings: *mf* and *mp*.

16

Two vocal staves and a piano accompaniment. The vocal staves are in treble clef with a key signature of three flats. The piano accompaniment is in grand staff. The lyrics are: -le - i - son, Chris - te e - le - i - son, -le - i - son, Chris - te e - le - i - son, \_\_\_\_\_. Dynamic markings: *f*.



28

-le - i - son, Ky - ri - e e - le - i - son,

-le - i - son, Ky - ri - e e - le - i - son,

31

*cresc.* Ky - ri - e e - le - i - son, Ky - ri - e e -

*cresc.* Ky - ri - e e - le - i - son, Ky - ri - e e -

*cresc.*

34

*rall.* *mf* -le - i - son, e - le - i - son, *mp* Ky - ri - e, *a tempo*

*mf* le - i - son, *rall.* e - le - i - son, *mp* Ky - ri - e e -

*mf* *a tempo* *mp*

37 *dim.*

Ky - ri - e, Ky - ri - e e -

*dim.*

- le - i - son, Ky - ri - e e -

*dim.*

39 *molto rit.*

*p*

- le - i - son, e - - - le - i -

*p*

- le - i - son, e - - - le - i -

*molto rit.*

*p*

42

son. *fade away*

son. *fade away*

8va-----

*pp*

# *BriLee Music*

*the Voice of Choral Music*

BriLee Music, founded by the late Brian Busch in 1997, is the leader in publishing choral music written specifically for the developing middle school and junior high singer.

With writing guidelines carefully developed by Brian, teachers who buy from the BriLee catalog know they will always find the following in music written by BriLee composers:

- Range appropriate – specifically for the adolescent changing voice
- Moderate in length
- Interesting, appealing and varied texts
- Accessible accompaniments

Writers for BriLee are among the most outstanding and respected in their field. The music is written, arranged and edited to meet a wide range of performance needs. The standard of musical excellence we present in each choral work is designed to meet the challenges faced by teachers and conductors all over the world who wish to offer quality, accessible repertoire to their ensembles.

## *BriLee Music* **Part-by-Part**

Free MP3 rehearsal and accompaniments

Go to: [www.BriLeeMusic.com](http://www.BriLeeMusic.com)

Part-by-Part resources were created to allow you, the busy choral director, more time to do the things you need to do to be successful in rehearsal and performance.

Download the following FREE resources and use them to help you TEACH your singers.



- Part-dominant recordings allow your singers to sing along with their part while hearing the other voices in the background.
- Full chorus recordings allow your singers to see and hear the music at the same time for greater insight.
- Professional accompaniments can be used for rehearsal or performance.

***BriLee Music***  
*the Voice of Choral Music*

BL949



Exclusively Distributed by  
**CARL FISCHER®**  
[www.carlfischer.com](http://www.carlfischer.com)