

# HOO SHOO TOO ROAD

Two-Part Treble Voices with Piano and Optional Fiddle,  
String Bass, Banjo and Tambourine

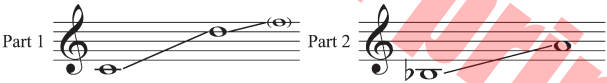
Patti Drennan

*BriLee Music*  
**Part-by-Part**



Free MP3 rehearsal and accompaniments  
Go to: [www.BriLeeMusic.com](http://www.BriLeeMusic.com)

Range:



Language: English  
Use: General/Festival  
Time: Approx. 1:53  
\*Difficulty: Moderate

***BriLee Music***  
the Voice of Choral Music

BL946



Exclusively Distributed by  
**CARL FISCHER®**  
[www.carlfischer.com](http://www.carlfischer.com)

## Note from the Composer

Hoo Shoo Too Road is a six-mile-long rural street in Baton Rouge, Louisiana. Legend has it that long ago, a group of Baton Rouge fishermen formed a club for fishing and fun, and named it the "Hoo Shoo Too Club." Members of the club frequently joined together for outings of fishing and fun on the banks of the Amite River. Early members "...took delight in jumping in a buggy, carriage or wagon and heading for cooler summer breezes on the river," according to an article in the *State-Times* newspaper from February 1980.

Through the years, lots of characters have lived on Hoo Shoo Too Road, like the ones described in the lyric of this modern-day folk song; however, these specific characters are fictional. The anthem is supposed to be silly and fun to sing, much in the spirit of the members of the original Hoo Shoo Too Club.

The lyric in this style is purposely nonsensical, so don't try to make too much of it. Phrases such as "moss don't grow on a toad" is original and can mean anything you want it to mean, but is aimed in this context to mean "gotta keep moving, stay active."

The washtub and the snowman are happenings on Hoo Shoo Too Road. Of course, it rarely snows in Baton Rouge, so the idea of a snowman is mostly nonsensical. Try not to make too much sense out of it all, because it's really not supposed to make much sense at all!

## About the Composer

Patti Drennan earned a Bachelor of Music Education degree at Oklahoma State University and a Masters of Music Education degree at the University of Oklahoma. She taught Choral Music for twenty-eight years in Norman Public Schools, the first twenty years at West Mid-High School, where she was voted "Teacher of the Year", and eight years at Norman High School where she directed four choirs which consistently received Superior ratings. During that time she was awarded the coveted "Director of Distinction Award" given yearly by the Oklahoma Choral Directors Association.

An active composer and arranger, Patti has over 400 choral octavos published with nine major publishers. An active conductor, church musician and adjudicator, she has also served as clinician for school and church workshops in twenty states and Canada. As an active advocate for music education, she has also presented at state Music Educators Conventions.

# Hoo Shoo Too Road

for Two-Part Treble Voices with Piano  
and Optional Fiddle, String Bass, Banjo and Tambourine\*

JOHN PARKER PATTI DRENNAN

Brightly, in a bluegrass style ♩ = 80

Fiddle

Piano

4 Alto *mf*

Plink-a plink, plink-a plink, plink-a plink plink.

8 Soprano *mf*

Er - i ka paint-ed her wash tub, gal-va-nized num-ber five.

Hoo Shoo Too Road,

*mf*

\* The parts for Optional Fiddle, String Bass, Banjo and Tambourine are available as downloads from <http://carlfischer.com>.

4  
12

Where she gon - na do her wash-in' when her fun - ny paint - in' dries? When her  
Where she gon - na do her wash - in' when her

16

*f*  
fun - ny paint - in' dries? Come a-way, my  
fun - ny paint - in' dries? Come a-way, my

20

dar - lin', moss don't grow on a toad. Yon - der let's see  
dar - lin', moss don't grow on a toad. Yon - der let's see

BL946



6

36

*mf*

Har-vine built a snow-man,                      cof-fee beans for his eyes.

*mf**mf*

40

Now that snow-man's ma - kin' cof - fee ev - 'ry time he cries,                      oh —

Ooh —

Oh,

44

ev - 'ry - time\_ he cries.

*f* Come a-way, my

ev - 'ry - time\_ he cries.

*f* Come a-way, my

*f**f*

48

dar - lin', moss don't grow on a toad. Yon - der let's see

dar - lin', moss don't grow on a toad. Yon - der let's see

For Promotional Use Only

52

what is hap'-nin' down on Hoo Shoo Too Road, down on Hoo Shoo Too

what is hap'-nin' down on Hoo Shoo Too Road, down on Hoo Shoo Too

*p sub.*

*p sub.*

*p sub.*

*p sub.*

56

Road. Come a - way my dar - lin',

Road. Come a - way my dar - lin',

*f*

*f*

*f*

*f*

8  
60

moss don't grow on a toad. Yon - der let's see what is hap'-nin' down on  
moss don't grow on a toad. Down on

64

*p sub.*

Hoo Shoo Too Road, down on Hoo Shoo Too Road,  
Hoo Shoo Too Road, down on Hoo Shoo Too Road,

*p*

*p sub.*

(Opt. a few sopranos on cued notes)

*mf cresc.*

Hoo Shoo Too Road, Hoo Shoo Too Road.  
Hoo Shoo Too Road, Hoo Shoo Too Road.

*f*

*mf cresc.*

*f*

68

*mf cresc.*

Hoo Shoo Too Road, Hoo Shoo Too Road.  
Hoo Shoo Too Road, Hoo Shoo Too Road.

*f*

*mf cresc.*

*f*