

MAY DAY CAROL

Two-Part Treble Voices with Piano

Traditional English Carol
Arranged by Catherine DeLanoy

BriLee Music
Part-by-Part



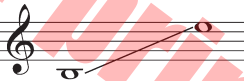
Free MP3 rehearsal and accompaniments
Go to: www.BriLeeMusic.com

Range:

Part 1



Part 2



Language: English
Use: General
Time: Approx. 2:39
*Difficulty: Moderate

Note from the Composer

The origin of *May Day Carol* is unknown, but convention has its beginning as a poem called “May Carol” that appeared in William Hone’s *Every-day Book* (1821).

As choir directors, we want to teach our singers the importance of phrasing (making a complete, beautiful, musical sentence):

Encourage your singers to breathe every four measures rather than at the poetically placed commas, using staggered breathing when necessary.

Just like a sentence, every musical phrase has an ebb and flow, so point out the crescendo and decrescendo markings for expressive singing.

Please note the dynamic markings that allow the melody line in Part II to shine. The descant in Part I should compliment, rather than overshadow the melody.

I sang this song when I was in middle school, and I’ve remembered it all of these years. I hope your choir enjoys it as well.

~Cathy DeLanoy

About the Arranger

Catherine DeLanoy is a musician currently living in the suburbs of Chicago. She has taught music at every grade level in the public school system and has recently retired from teaching at Westmont Junior High School where she taught general music and directed their four choirs. WJH choirs consistently earned top scores, honors and prestigious performances under her direction.

Ms. DeLanoy enjoyed arranging compositions for her choirs and continues to have her octavos published by BriLee Music and Carl Fischer Music. In addition to composing, she sings professionally as a member and soloist with the critically acclaimed Chicago Choral Artists. She can be heard on many of their numerous concert CDs. She is also a middle school choir specialist working as an instructor, conductor, clinician and adjudicator.

Ms. DeLanoy received her Bachelor’s Degree in Music Education from Oakland University in Rochester, Michigan. She went on to earn her Masters of Music Education degree from VanderCook College of Music in Chicago.

May Day Carol

for Two-Part Treble Voices with Piano

3

Traditional English Carol
Arranged by Catherine DeLanoy

Lyricaly ♩ = 88

Parts 1, 2

mp

The moon shines bright, the

Piano

mp

4

stars give a light, A lit-tle be - fore 'tis day; The prom-ise of dawn is

8

call - ing to us, And bid us a-wake and pray. A - wake, a-wake, oh

mf

cresc. *mf*

12

pret-ty lit - tle maid, Out of your drow - sy dream; And step in - to your

16

dair-y be - low, And fetch me a bowl of cream.

20

Part 1 *mp*

If not a bowl of your sweet cream, A cup to bring me

Part 2 *mf* melody*

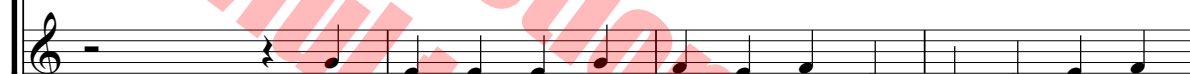
If not a bowl of your sweet cream, A cup to bring me

* The lower voice melody should always be louder than upper voice harmony.

34

mp*melody*

38



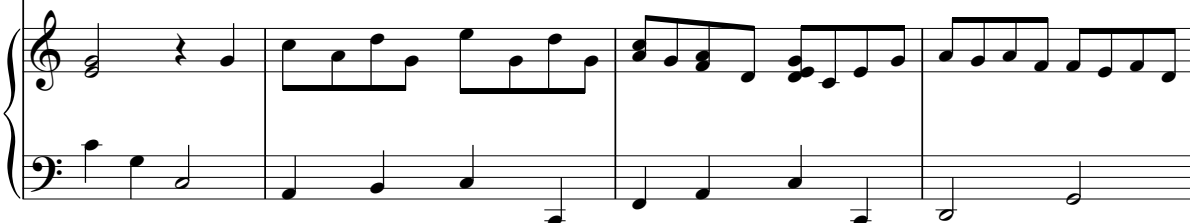
42

mf *melody*

By na - ture's

melody

By the work of na - ture's



46

hand.
hand.

My song is done, I'm gone. I can - not

hand.
hand.

My song is done, I must be gone, No long - er can I

mp *cresc.* *mf*

50

mf melody *poco rit.* *a tempo*

stay; So it's God bless you all, both great and small, And
So now bless you all,

stay; bless you all, great and small, And

cresc. *poco rit.* *a tempo*

53

rit.

send you a joy - ful May.

send you a joy - ful May.

rit.

BriLee Music

the Voice of Choral Music

BriLee Music, founded by the late Brian Busch in 1997, is the leader in publishing choral music written specifically for the developing middle school and junior high singer.

With writing guidelines carefully developed by Brian, teachers who buy from the BriLee catalog know they will always find the following in music written by BriLee composers:

- Range appropriate – specifically for the adolescent changing voice
- Moderate in length
- Interesting, appealing and varied texts
- Accessible accompaniments

Writers for BriLee are among the most outstanding and respected in their field. The music is written, arranged and edited to meet a wide range of performance needs. The standard of musical excellence we present in each choral work is designed to meet the challenges faced by teachers and conductors all over the world who wish to offer quality, accessible repertoire to their ensembles.

BriLee Music **Part-by-Part**



Free MP3 rehearsal and accompaniments

Go to: www.BriLeeMusic.com

Part-by-Part resources were created to allow you, the busy choral director, more time to do the things you need to do to be successful in rehearsal and performance.

Download the following FREE resources and use them to help you TEACH your singers.



- Part-dominant recordings allow your singers to sing along with their part while hearing the other voices in the background.
- Full chorus recordings allow your singers to see and hear the music at the same time for greater insight.
- Professional accompaniments can be used for rehearsal or performance.

BriLee Music
the Voice of Choral Music

BL944



Exclusively Distributed by
CARL FISCHER®
www.carlfischer.com