

LOCH LOMOND

Two-Part Treble Voices with Piano

Scottish Folk Song

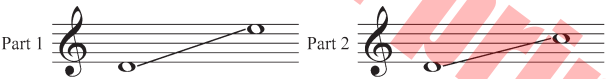
Arranged by Earlene Rentz

BriLee Music
Part-by-Part



Free MP3 rehearsal and accompaniments
Go to: www.BriLeeMusic.com

Range:



Language: English
Use: General/Festival
Time: Approx. 2:14
*Difficulty: Moderate

Note from the Arranger

Loch Lomond is one of the most beautiful, and most widely recognized, Scottish folksongs to find its way into popular usage today. Although the melody might be a bit “rangy,” the song makes a lovely solo that is popular wherever it is sung.

The arranger has kept the ranges for each voice part moderate. Chart the course of the melody as it moves throughout the work so that you are always aware when you are singing the melody.

There are many verbal pictures to draw upon: walking through the valleys, walking along the river banks, and viewing the beautiful scenery of Scotland. However, the essence of the song is “lost love,” and, at times, the suffering from love lost is done with a stiff upper lip.

The work has two moods to portray that are well delineated throughout the music. At the end, one mood moves slowly into the other. To make this mood transition will be your great challenge.

It’s a wonderful work and your audience will be glad they were able to hear you perform it.

About the Arranger

Earlene Rentz published her first choral octavo in 1994. In addition to her current work as a publisher and a composer, she is a speaker and clinician in choral music education techniques. Dr. Rentz frequently conducts choral ensembles in district, regional, and state events. She has conducted All-State choirs in Alabama, Georgia, Florida, and Kentucky.

3

Flowing ♩ = 80

The image shows a musical score for the piece 'Flowing' by John Williams. The score is written for three parts: Part 1, Part 2, and Piano. The key signature is one sharp (F#) and the time signature is 4/4. The tempo is marked 'Flowing' with a quarter note equal to 80 beats per minute. The score is divided into three measures. Part 1 and Part 2 are both marked 'mp' (mezzo-piano). The Piano part is marked 'mp' and features a melodic line in the right hand and a bass line in the left hand. The score is watermarked with 'For Piano' in a large, red, diagonal font.

Part 1

Part 2

Flowing ♩ = 80

Piano

mp

mp

mp

By —

By —

4

The image shows a musical score for the song 'The Bonnie Banks o' Loch Lomond'. It consists of three staves. The top two staves are for vocal parts, both in treble clef with a key signature of one sharp (F#). The lyrics are written below the notes. The bottom staff is for piano accompaniment, with a grand staff (treble and bass clefs) and a key signature of one sharp. The piano part features a rhythmic pattern of eighth and sixteenth notes in the right hand and sustained chords in the left hand. There are two double bar lines with repeat signs (**) in the vocal parts, indicating where the melody repeats. A large red watermark 'Copyrighted Material' is overlaid diagonally across the page.

yon bon-nie banks, and by yon bon-nie braes, Where the sun shines bright on Loch Lomond

yon bon-nie banks, and by yon bon-nie braes, Where the sun shines bright on Loch Lomond

****braes** - hillsides, Loch - lake

BL940

7

mf

Lo - mond, Where me and my true love would ev - er want to go on the

mf

Lo - mond, Where me — and my true love would ev - er want to go on the

mf

10

More marked

bon-nie, bon-nie banks o' Loch Lo - - mond.

bon-nie, bon-nie banks o' Loch Lo - - mond.

More marked

13

Oh ye'll take the high road, and I'll take the low, and —

Oh ye'll take the high road, and I'll take the low, and —

24

mp

Then we part - ed, Steep, side o' Ben

then that we part - ed in yon sha - dy glen, On the steep, steep side o' Ben

27

Slower

Lo - - mond, and in pur - ple hue the

Lo - - mond, and in pur - ple hue the

Slower

29

*rit.**p*

High-land hills we view, And the moon com - ing out in the gloam -

p

High-land hills we view, And the moon com - ing out in the gloam -

*rit.**p*

*glen - small, secluded valley, Ben Lomond - a mountain in Scotland

More marked
a tempo

f

32

in'. Oh ye'll take the high road, and —

in'. Oh ye'll take the high road, and I'll take the low, and —

More marked
a tempo

f

35

I'll be in Scot - land a - fore ye, but me and my true love will

I'll be in Scot - land a - fore ye, but me — and my true love will

38

nev-er meet a-gain on the bon-nie, bon-nie banks, the bon-nie, bon-nie banks, on the

nev-er meet a-gain on the bon-nie, bon-nie banks, the bon-nie, bon-nie banks, on the

* gloaming - twilight.

41 *mp*

bon-nie, bon-nie banks o' Loch Lo - mond, Loch Lo -

44 *p rit.*

mond, Loch Lo -

46 *a tempo* *rit.* *pp*

mond. mond.

a tempo *rit.* *pp*

BriLee Music
the Voice of Choral Music

BL940



6 80160 90279 8

Exclusively Distributed by
CARL FISCHER®
www.carlfischer.com