

WOVEN AS ONE

SSA accompanied

Mark Patterson

BriLee Music
the Voice of Choral Music

BriLee Music
Part-by-Part



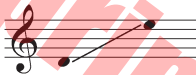
Free MP3 rehearsal and accompaniments
Go to: www.BriLeeMusic.com

Range:

Soprano I



Soprano II



Alto



Language: English
Use: General / Festival
Time: Approx. 3:58
*Difficulty: Moderate

Commissioned by Jacqueline Martino and Brian Miller
for the Choirs of King Low Heywood Thomas School, Stamford, CT

Woven as One

for SSA Voices with Piano*

Words and Music by
MARK PATTERSON

Flowing, with steady energy (♩ = 116)

Piano *mf*

The piano introduction is in 4/4 time with a key signature of one sharp (F#). It features a flowing melody in the right hand and a steady accompaniment in the left hand. The melody consists of eighth and quarter notes, while the accompaniment uses chords and single notes.

5 Alto *mf*

Riv-er, stream, — and o - cean, rock-y hill — and des-ert sand, —

sim.

The alto vocal part enters at measure 5 with a melody of eighth and quarter notes. The piano accompaniment continues with a steady eighth-note pattern in the right hand and chords in the left hand. A 'sim.' (simile) marking is placed over the piano accompaniment at measure 8.

9

mead-ow, vale, and moun - tain reach to take — each

This system contains measures 9 through 12. The vocal part continues its melody, and the piano accompaniment maintains the steady eighth-note pattern. The lyrics 'mead-ow, vale, and moun - tain reach to take — each' are written under the vocal line.

13 *tutti unis.*

oth-er's hand. — Where — one thread ends, an - oth-er be-gins, their

This system contains measures 13 through 16. The vocal part continues its melody, and the piano accompaniment maintains the steady eighth-note pattern. The lyrics 'oth-er's hand. — Where — one thread ends, an - oth-er be-gins, their' are written under the vocal line. A 'tutti unis.' marking is placed above the vocal line at measure 13.

*Also available for Three-Part Mixed Voices (BL875)

Copyright © 2015 BLP Choral Music (ASCAP)
International Copyright Secured.

All rights reserved, including performance rights.
Printed in the U.S.A.

17

pur - pose is the same: _ _ _ _ _

voic - es joined to - geth - er in the

21 **Soprano I, II**

plan-et's bold _ _ _ re - frain. *f* We are all bound to -

Alto

plan-et's bold _ _ _ re - frain. *f* We are all bound to -

25

geth - er, _ _ _ wov - en through _ the tap - es - try _ _ _ of liv - ing things, _ _ _

geth - er, _ _ _ wov - en through _ the tap - es - try _ _ _ of liv - ing things, _ _ _

29

and our diff-erences make us bet ter, _ giv-ing shape and strength _ to each

and our diff-erences make us bet ter, _ giv-ing shape and strength _ to each

33

thread we bring. _ Still our fin - est days _ are yet to come _ *mf*

thread we bring. _ When we

mf

37

f We are all bound to - geth-er, _

learn to see _ what makes us strong: _ We are all bound to - geth-er, _

f

53

Where__ one thread ends, an - oth - er be - gins, their pur - pose is the same:

Where__ one thread ends, an - oth - er be - gins, their pur - pose is the same:

57

Voic - es joined to - geth - er in__ the plan - et's bold__ re -

Voic - es joined to - geth - er in__ the plan - et's bold__ re -

61

frain: *f* We are all bound to - geth er, __

frain: *f* We are all bound to - geth er, __

65

wov - en through the tap-es - try of liv-ing things, and our

wov - en through the tap-es - try of liv-ing things, and our

69

diff-er-ences make us bet-ter, giv-ing shape and strength to each thread we bring.

diff-er-ences make us bet-ter, giv-ing shape and strength to each thread we bring.

73

unis.

mf

Still our fin - est days are yet to come.

When we learn to see what

77

f

We are all bound to - geth-er, — wov - en as one.

makes us strong: We are all bound to - geth-er, — wov - en as one.

82

mf *f*

We are all bound, we are all bound to -

mf *f*

We are all bound to geth-er, — we are all bound to -

86

poco rit.

geth-er, — wov - en as one. —

geth-er, — wov - en as one. —

poco rit.

ff

BriLee Music
the Voice of Choral Music

BL860



Exclusively Distributed by
CARL FISCHER®
www.carlfischer.com