

# JUBILATE DEO

SSA a cappella with Opt Piano

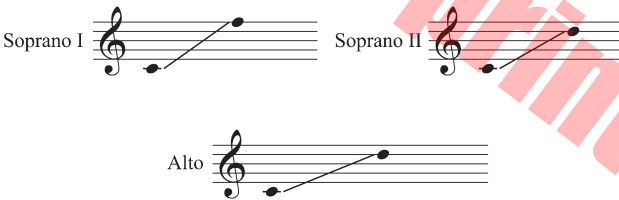
Susan Thrift

**BriLee Music**  
**Part-by-Part**



Free MP3 rehearsal and accompaniments  
Go to: [www.BriLeeMusic.com](http://www.BriLeeMusic.com)

Range:



Language: Latin & English  
Use: General  
Time: Approx. 1:27  
\*Difficulty: Moderate

## Performance Notes

This song has been written to suit the needs of the ensemble: it can be performed with piano accompaniment or *a cappella*. The text is from Psalm 100, one of the most popular Psalms. Singers are encouraged to review the Latin and explore how the English words complement the Latin.

Latin is a wonderful language to sing, because all of the vowel sounds are pure:

A = AH

I = E

E = EH

O = AW

U = OO

Syllabic stress is very important. Enjoy exploring these stresses within this joyful, multi-meter setting of one of my favorite Psalms. I hope you enjoy singing *Jubilate Deo* as much as I enjoyed writing it for you!

— Susan Thrift

## About the Arranger

Susan Thrift taught middle school and high school choral music in Texas for 16 years. She enjoys writing music for church and school choirs, and serves as Minister of Music in Waco, Texas.

# Jubilate Deo

for SSA Voices with Optional Piano\*

3

SUSAN THRIFT

♩ = 126–132

Soprano 1

Soprano 2

Alto

Piano

*mf*

*p*

♩ = 126–132

4

*mf*

Ju - bi - la - te De - o

*mf* \*\*

Ju - bi - la - te De - o

*mp*

*mf*

\* If not using piano accompaniment, begin singing at m. 6.

\*\* In mm. 6-9 and 25-28, feel free to divide Soprano 2 equally between Soprano 1 and Alto for purposes of balance.

7

Ju - bi - la - te De - o

Ju - bi - la - te De - o

*mf* Ju - bi - la - te De - o Ju - bi - la - te De - o

Moving forward with energy

10

*ff* ju - bi - la te, ex - ul - ta - tel!

*mp* ju - bi - la - te, *ff* ju - bi - la - te, ex - ul - ta - tel!

*p* Ju - bi - la - te, *mp* ju - bi - la - te, *ff* ju - bi - la - te, ex - ul - ta - tel!

Moving forward with energy

*p* *mp* *ff*



21

song\_ of joy! Al - le - lu, al - le - lu, al - le - lu, al - le - lu - ia!

te! A - le, a - le - lu - ia!

te! A - le, a - le - lu - ia!

Tempo I (♩ = 110)

25

*mf* Ju - bi - la - te De - o

*mf* Ju - bi - la - te De - o

*mf* Ju - bi - la - te De - o

Tempo I (♩ = 110)

*mf*

28

ju - bi - la - te, ex - ul -

ju - bi - la - te, ju - bi - la - te, ex - ul -

Ju - bi - la - te De - o Ju - bi - la - te, ju - bi - la - te, ju - bi - la - te, ex - ul -

ta - te! Al - le - lu - ia! A song of praise!

ta - te! Al - le - lu - ia! A song of praise!

ta - te! Al - le - lu - ia! A song of praise!

32

ta - te! Al - le - lu - ia! A song of praise!

ta - te! Al - le - lu - ia! A song of praise!

ta - te! Al - le - lu - ia! A song of praise!

# *BriLee Music*

*the Voice of Choral Music*

BriLee Music, founded by the late Brian Busch in 1997, is the leader in publishing choral music written specifically for the developing middle school and junior high singer.

With writing guidelines carefully developed by Brian, teachers who buy from the BriLee catalog know they will always find the following in music written by BriLee composers:

- Range appropriate – specifically for the adolescent changing voice
- Moderate in length
- Interesting, appealing and varied texts
- Accessible accompaniments

Writers for BriLee are among the most outstanding and respected in their field. The music is written, arranged and edited to meet a wide range of performance needs. The standard of musical excellence we present in each choral work is designed to meet the challenges faced by teachers and conductors all over the world who wish to offer quality, accessible repertoire to their ensembles.

## *BriLee Music* **Part-by-Part**

Free MP3 rehearsal and accompaniments

Go to: [www.BriLeeMusic.com](http://www.BriLeeMusic.com)

Part-by-Part resources were created to allow you, the busy choral director, more time to do the things you need to do to be successful in rehearsal and performance.

Download the following FREE resources and use them to help you TEACH your singers.



- Part-dominant recordings allow your singers to sing along with their part while hearing the other voices in the background.
- Full chorus recordings allow your singers to see and hear the music at the same time for greater insight.
- Professional accompaniments can be used for rehearsal or performance.

***BriLee Music***  
*the Voice of Choral Music*

BL853



6 72405 00853 2

Exclusively Distributed by  
**CARL FISCHER®**  
[www.carlfischer.com](http://www.carlfischer.com)