

THAT’S WHAT CHRISTMAS MEANS TO ME

2-part accompanied

Darrell Parrish

BriLee Music
Part-by-Part



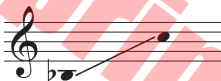
Free MP3 rehearsal and accompaniments
Go to: www.BriLeeMusic.com

Range:

Part I



Part II



Language: English

Use: Holiday

Time: Approx. 3:03

*Difficulty: Moderate

Performance Notes

To the singers:

Strive for a clear, bright tonal color to reflect the lightness of the music and text.

Avoid choppy singing and phrasing. Work for four-measure phrasing, with an overarching sense of line, horizontal momentum and direction.

Part I may be sung alone, creating a unison piece, but it is encouraged to teach your young singers both parts so they will become familiar with the concept of having two lines sounding in harmony.

I hope that this piece will be a welcome addition to your holiday program!

—Darrell Parrish

About the Composer

Darrell Parrish received a Bachelor's of Music Education in 1977 from Sam Houston State University and began his teaching career that same year. He received a Master of the Arts in Music Theory and Composition in 1992 from Sam Houston State University where he studied composition with Dr. Fisher Tull. He taught instrumental music in public schools in the Houston area until 1993 when he became the director of wind and jazz bands at St. John's School in Houston, where he is still teaching today. Mr. Parrish has written for many types of ensembles including wind band, jazz band, and choir.

That's What Christmas Means To Me

3

for Two-Part Treble Voices with Piano

Words and Music by
DARRELL PARRISH

Piano

(♩ = 96)

mf lightly, like a music box

6

Part I, II

Christ-mas time is
Christ-mas time is

10

al-most here. Oh that ver - y joy-ous time of year. Christ-mas trees that
al-most here. and the mag-ic of this time of year. Peace On Earth, Good

14

shine with lights and co - zy fires for snow - y nights.
Will To Men! Im - por - tant now as it was then.

17

Part I

Christ-mas time is draw ing near and the com-ing of a - no - ther year.
As the star was shin-ing bright giv-ing off its ver - y won-drous light.

Part II

Christ-mas time is draw ing near and the com-ing of a - no - ther year.
As the star was shin-ing bright giv-ing off its ver - y won-drous light.

21

Time with friends and fam - i - ly We'll ga - ther 'round the Christ-mas tree.
An - gels sang as wise-men came to see the Child that ho - ly night.

37 [1.]

me!
me!

me!
me!

43 [2.]

me!
me!

me!
me!

Mu-sic in the

Mu-sic in the

48

air. Joy is ev' - ry-where. Christ - mas is here a -

air. Joy is ev' - ry-where. Christ - mas is here a -

53

gain _____ Let's cel-e-brate the sea - son but think a-bout the

gain _____ Let's cel-e-brate the sea - son but think a-bout the



58

rea - son for the mes-sage of the sea - son and that's what Christ-mas means to

rea - son for the mes-sage of the sea - son and that's what Christ-mas means to



63

rit.

me! to me!

me! to me!

mf

rit.



BriLee Music

the Voice of Choral Music

BriLee Music, founded by the late Brian Busch in 1997, is the leader in publishing choral music written specifically for the developing middle school and junior high singer.

With writing guidelines carefully developed by Brian, teachers who buy from the BriLee catalog know they will always find the following in music written by BriLee composers:

- Range appropriate – specifically for the adolescent changing voice
- Moderate in length
- Interesting, appealing and varied texts
- Accessible accompaniments

Writers for BriLee are among the most outstanding and respected in their field. The music is written, arranged and edited to meet a wide range of performance needs. The standard of musical excellence we present in each choral work is designed to meet the challenges faced by teachers and conductors all over the world who wish to offer quality, accessible repertoire to their ensembles.

BriLee Music **Part-by-Part**

Free MP3 rehearsal and accompaniments

Go to: www.BriLeeMusic.com

Part-by-Part resources were created to allow you, the busy choral director, more time to do the things you need to do to be successful in rehearsal and performance.

Download the following FREE resources and use them to help you TEACH your singers.



- Part-dominant recordings allow your singers to sing along with their part while hearing the other voices in the background.
- Full chorus recordings allow your singers to see and hear the music at the same time for greater insight.
- Professional accompaniments can be used for rehearsal or performance.

BriLee Music
the Voice of Choral Music

BL851



6 72405 00851 8

Exclusively Distributed by
CARL FISCHER®
www.carlfischer.com