

FIDDLER'S BEND

2-part any combination accompanied with opt Fiddle

Stephanie Bettman & Luke Halpin
Arranged by Catherine DeLanoy

BriLee Music
Part-by-Part



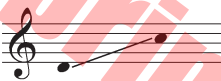
Free MP3 rehearsal and accompaniments
Go to: www.BriLeeMusic.com

Range:

Part I



Part II



Language: English
Use: General
Time: Approx. 2:24
*Difficulty: Moderate

BriLee Music
the Voice of Choral Music

Performance Notes

Fiddler's Bend is one of those unique 2-part arrangements that can be sung by treble or mixed voices with the sopranos (and tenors) on Part I, and the altos (and basses) on Part II.

Fiddler's Bend was inspired by a real place in Eastern Oklahoma where adventurous souls live on the flood plain, in the path of tornado alley, nestled in the bend of the Illinois River. Bettman and Halpin toured the area several times and became fast friends with some of the folks who live there. This song was written in honor of those friends and that magical place.

Award winning singer/songwriter duo Stephanie Bettman (singer / songwriter / fiddler) and Luke Halpin (multi-instrumentalist / singer / songwriter) have been touring the U.S. since 2008. As of 2014, they have completed four full length CDs. In 2012, they were the subject of a film: "Stephanie Bettman & Luke Halpin; *The It All Comes Back To Love Tour* which aired on public television in Los Angeles.

Visit www.bettmanandhalpin.com for more information.

"Chopping" on the fiddle is a percussive technique where the bow drops down and hits the strings, immediately followed by a forward motion to make a quick pitched sound. The chop is played at the "frog", or the lower end of the bow.

-Notes by Stephanie Bettman and Catherine DeLanoy

About the Arranger

Catherine DeLanoy is a musician currently living in the suburbs of Chicago. She has taught music at every grade level in the public school system and has recently retired from teaching at Westmont Junior High School, where she taught general music and directed its four choirs. Ms. DeLanoy sings professionally as a member and soloist with the critically acclaimed Chicago Choral Artists.

Ms. DeLanoy also works as a middle school specialist and enjoys being an instructor, clinician and adjudicator whenever possible.

Fiddler's Bend

3

for Two-Part Treble or Mixed Voices with Piano
and Optional Fiddle*

Words and Music by
STEPHANIE BETTMAN
and **LUKE HALPIN**
Arranged by Catherine DeLanoy

$\text{♩} = 88$

Fiddle

Piano

Part 1 (Soprano/Tenor)

Part 2 (Alto/Bass)

Down from the hol - ler where the gra - vel road ends, No one is a strang - er, ev -

Down from the hol - ler where the gra - vel road ends, No one is a strang - er, ev -

chop

G C G

*The part for Optional Fiddle appears on pp. 15 and 16.

Copyright © 2015 BLP Choral Music (ASCAP)
International Copyright Secured.
All rights reserved, including performance rights.
Printed in the U.S.A.

- 'ry bo-dy's friends. They all get to- geth - er when the work day __ ends, dan -

- 'ry bo-dy's friends. They all get to- geth - er when the work day ends, dan -

D G C G

- cin' round the fi - re at the Fid - dl - er's __ Bend. Dan - cin' round the fi - re at the

- cin' round the fi - re at the Fid - dl - er's Bend. Dan - cin' round the fi - re at the

D G

14

1. 2.

Fid-dl - er's Bend. Fid-dl - er's Bend. When you're

Fid-dl-er's Bend. Fid-dl-er's Bend. When you're

1. 2.

D G D G

18

wear - y, — you will find, It all works

wear - y, — you will find, It all works

C G

22

out here_ where the riv - er un - winds.

out here_ where the riv - er un - winds.

C G

This block contains measures 22, 23, and 24 of a musical score. Measures 22 and 23 are vocal staves with lyrics. Measure 24 is a piano accompaniment staff with chords C and G indicated. A large red watermark 'For promotional use only' is overlaid diagonally across the page.

25

There's plen - ty for ev - 'ry one, squirrels and fish -

There's plen - ty for ev - 'ry one, squirrels and fish -

D

This block contains measures 25, 26, 27, and 28 of a musical score. Measures 25 and 26 are vocal staves with lyrics. Measures 27 and 28 are piano accompaniment staves with chord D indicated in measure 28. A large red watermark 'For promotional use only' is overlaid diagonally across the page.

29

Two vocal staves and a piano accompaniment. The vocal staves are in treble clef with a key signature of one sharp (F#). The piano accompaniment consists of a right-hand staff in treble clef and a left-hand staff in bass clef, both with a key signature of one sharp. The lyrics are: -es. No one walks a - lone here. And the dogs do the. The piano accompaniment includes chord markings G and C above the right-hand staff.

-es. No one walks a - lone here. And the dogs do the

-es. No one walks a - lone here. And the dogs do the

G C G

32

Two vocal staves and a piano accompaniment. The vocal staves are in treble clef with a key signature of one sharp (F#). The piano accompaniment consists of a right-hand staff in treble clef and a left-hand staff in bass clef, both with a key signature of one sharp. The lyrics are: dish - - es. Down from the hol - ler where the. The piano accompaniment includes chord markings D and G above the right-hand staff.

dish - - es. Down from the hol - ler where the

dish - - es. Down from the hol - ler where the

D G

35

gra-vel road ends, No one is a strang - er, ev - 'ry bo-dy's friends. They

gra-vel road ends, No one is a strang - er, ev - 'ry bo-dy's friends. They

C G D G

For promotional use only
Unlawful to copy or print

38

all get to- geth - er when the work day ends, danc - in' round the fi - re at the

all get to- geth - er when the work day ends, danc - in' round the fi - re at the

C G

For promotional use only
Unlawful to copy or print

53

(opt. solo or duet)

Where love is _____

Where love is _____

pizz.

D G

57

(opt. solo or duet)

strong-er than a flood. Where love is _____

strong-er than a flood. Where love is _____

C G

61

(opt. solo or duet)

hot-ter than a fi - re Where love is

hot-ter than a fi - re Where love is

C G

65

pat-ient as an old man watch-ing the

pat-ient as an old man watch-ing the

tutti

tutti

chop (arco)

C G C

69

For promotional use only

Print

riv - er grow high - er. (high - er.)

riv - er grow high - er. (high - er.)

D

74

For promotional use only

Print

Down from the hol - ler where the gra - vel road ends, No one is a strang - er, ev -

Down from the hol - ler where the gra - vel road ends, No one is a strang - er, ev -

G C G

77

- 'ry bo-dy's friends. They all get to-geth-er when the work day__ ends, danc-

- 'ry bo-dy's friends. They all get to-geth-er when the work day ends, danc-

D G C G

80

- in'round the fi-re at the Fid-dl-er's__ Bend. Danc - in'round the fi-re at the

- in'round the fi-re at the Fid-dl-er's Bend. Danc - in'round the fi-re at the

D G

83 1. 2.

Fid - dl - er's__ Bend. Fid - dl - er's__ Bend. Danc - in' round the fi - re at the

Fid - dl - er's Bend. Fid - dl - er's Bend. Danc - cin' round the fi - re at the

1. D G 2. D G

86

Fid - dl - er's__ Bend. Danc - in' round the fi - re at the Fid - dl - er's__ Bend.

Fid - dl - er's Bend. Danc - cin' round the fi - re at the Fid - dl - er's Bend.

D G D G

Fiddler's Bend
for Two-Part Treble Voices with Piano
and Optional Fiddle

Words and Music by
STEPHANIE BETTMAN
and **LUKE HALPIN**
Arranged by Catherine DeLanoy

$\text{♩} = 88$ chop



6



11



16



20



25



30



35



40



45



50



56

pizz.



60



64



68 chop (arco)



72



76



80

1.



84

2.



BriLee Music
the Voice of Choral Music

BL846



6 72405 00846 4

Exclusively Distributed by
CARL FISCHER®
www.carlfischer.com