

# I'VE BEEN IN THE STORM SO LONG

SA Voices (Optional Descant), *a cappella*  
with Optional Piano

Traditional Spiritual  
Arranged by Christi Jones

**BriLee Music**  
**Part-by-Part**



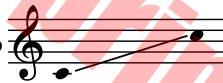
Free MP3 rehearsal and accompaniments  
Go to: [www.BriLeeMusic.com](http://www.BriLeeMusic.com)

Ranges:

Soprano



Alto



Language: English  
Use: General/Festival  
Time: Approx. 2:48  
\*Difficulty: Moderate

## Notes

One of the most meaningful and emotional genres of American music and folk songs is the spiritual, created by slaves during their days and nights of persecution on plantations in the American South prior to the Civil War. The words convey heartache and misery over the loss of freedom, family, and home; yet they also highlight the hopes and dreams that slaves could overcome these hardships and gain freedom, either through emancipation, or when they leave this world and find peace in Heaven.

The text of *I've Been in the Storm So Long* tells a story of someone who has been through many trials and wishes desperately that the burdens of slavery could be lessened or lifted for even a small amount of time. The words express a heartfelt desire to communicate and reunite with family and loved ones. In the end, the singer rejoices in the fact that these troubles will end when he or she finally reaches Heaven.

## About the Arranger

Christi Jones has been teaching Choir for nineteen years now, eighteen of which have been at Young Junior High in Arlington, Texas. Choirs under her direction have performed at TMEA, SWACDA, ACDA, the MS/JH National Convention and for the State Board of Education. Christi was named Teacher of the Year at Young in 2011 and also received Runner-Up for the district's AWARE award in 2011, 2014 and 2016.

Christi has had pieces published by Carl Fischer, BriLee Music and RBC (UIL Sightreading pieces). Most of her compositions came about due to a need for one of her own ensembles, or a need/interest of her other choir director friends.

She is a member of TMEA, TCDA, ACDA and TMAA and is sought after as a Region Cinician and UIL Adjudicator. Christi is also on staff as a Worship Ministry Assistant at First Baptist Church in Arlington, where she directs the Children's and Youth Choirs.

She graduated Summa Cum Laude from Wayland Baptist University. While at Wayland, she was listed as Who's Who Among America's Colleges and Universities, named International Choir Outstanding Freshman, selected as a Sears Directors Cup National Finalist, and played Volleyball for the Sooner Athletic Conference Champions, the Lady Pioneers.

Christi is happily married to her High School Sweetheart, Scott (whom she met in Choir when she was in Junior High!). Scott teaches Math at Young, and they reside in Arlington with their sons, Neal and Carson.

# I've Been in the Storm So Long

3

for SA Voices (optional Descant), *a cappella* and optional Piano

Traditional Spiritual  
Arranged by Christi Jones

♩ = 80\*

Piano

The piano introduction for the first system is in 4/4 time, key of B-flat major. The right hand plays a melody starting on G4, moving up stepwise to A4, Bb4, and C5, then descending. The left hand plays a bass line starting on Bb2, moving up stepwise to C3, D3, and E3, then descending. The first measure contains a whole note chord of Bb4, C5, and D5. The second measure contains a whole note chord of Bb4, C5, and D5. The third measure contains a whole note chord of Bb4, C5, and D5. The fourth measure contains a whole note chord of Bb4, C5, and D5.

4 Soprano

*mp*

I've been in the storm so long. I've been in the storm

Alto

*mp*

I've been in the storm so long. I've been in the storm

The piano accompaniment for the second system continues the melody and bass line from the first system. The right hand plays a melody starting on G4, moving up stepwise to A4, Bb4, and C5, then descending. The left hand plays a bass line starting on Bb2, moving up stepwise to C3, D3, and E3, then descending. The first measure contains a whole note chord of Bb4, C5, and D5. The second measure contains a whole note chord of Bb4, C5, and D5. The third measure contains a whole note chord of Bb4, C5, and D5. The fourth measure contains a whole note chord of Bb4, C5, and D5.

8

so long chil - dren. I've been in the storm so long, oh

so long chil - dren. I've been in the storm so long, oh

The piano accompaniment for the third system continues the melody and bass line from the second system. The right hand plays a melody starting on G4, moving up stepwise to A4, Bb4, and C5, then descending. The left hand plays a bass line starting on Bb2, moving up stepwise to C3, D3, and E3, then descending. The first measure contains a whole note chord of Bb4, C5, and D5. The second measure contains a whole note chord of Bb4, C5, and D5. The third measure contains a whole note chord of Bb4, C5, and D5. The fourth measure contains a whole note chord of Bb4, C5, and D5.

\* If performing *a cappella*, begin singing in m. 4.

11

give me lit - tle time to pray. I've

give me lit - tle time to pray. I've

14

*mf* been in the storm so long. I've been in the storm

*mf* been in the storm so long. Been in the storm

17

so long chil - dren. I've been in the storm so long, oh

so long chil - dren. Been in the storm so long,

\* If performing a *cappella*, rest for one beat and continue to beat 4 of m. 13.



30

## Optional Descant

I've been in the storm. It's been oh so long.

*mp* been in the storm so long. *mf* I've been in the storm so long chil - dren. I've

*mp* been in the storm so long. *mf* Been in the storm so long chil - dren.

34

*f* I've been in the storm, give me lit-tle time to pray. *rit.*

*f* been in the storm so long, oh give me lit-tle time to pray.

*f* Been in the storm so long, give me lit-tle time to pray. *rit.*

**For promotional use only  
unlawful to copy or print**

# BriLee Music

*the Voice of Choral Music*

BriLee Music, founded by the late Brian Busch in 1997, is the leader in publishing choral music written specifically for the developing middle school and junior high singer.

With writing guidelines carefully developed by Brian, teachers who buy from the BriLee catalog know they will always find the following in music written by BriLee composers:

- Range appropriate – specifically for the adolescent changing voice
- Moderate in length
- Interesting, appealing and varied texts
- Accessible accompaniments

Writers for BriLee are among the most outstanding and respected in their field. The music is written, arranged and edited to meet a wide range of performance needs. The standard of musical excellence we present in each choral work is designed to meet the challenges faced by teachers and conductors all over the world who wish to offer quality, accessible repertoire to their ensembles.

## BriLee Music Part-by-Part

Free MP3 rehearsal and accompaniments

Go to: [www.BriLeeMusic.com](http://www.BriLeeMusic.com)

Part-by-Part resources were created to allow you, the busy choral director, more time to do the things you need to do to be successful in rehearsal and performance.

Download the following FREE resources and use them to help you TEACH your singers.



- Part-dominant recordings allow your singers to sing along with their part while hearing the other voices in the background.
- Full chorus recordings allow your singers to see and hear the music at the same time for greater insight.
- Professional accompaniments can be used for rehearsal or performance.

**BriLee Music**  
*the Voice of Choral Music*

BL1049



6 80160 91160 8

Exclusively Distributed by  
**CARL FISCHER®**  
[www.carlfischer.com](http://www.carlfischer.com)